

**Public
Auction**

Eastern Auctions Ltd.



***The Montclair Collection* of Canadian Postage Stamps**

Gary J. Lyon
Licensed & Bonded Auctioneer

May
29th - 30th
2014



Eastern Auctions Ltd.

P.O. Box 250, Bathurst, New Brunswick, E2A 3Z2, Canada

Tel: 1 (506) 548-8986 • Fax: 1 (506) 546-6627

Toll Free Tel: 1 (800) 667-8267 • Fax: 1 (888) 867-8267

E-Mail: easternauctions@nb.aibn.com

Web Site: www.easternauctions.com

PUBLIC AUCTION BID SHEET

Sale Date: May 29th - 30th, 2014

Please buy the following lots for me at prices not exceeding those shown. I have read the conditions of sale at the end of the catalogue and understand the 15% buyer's premium.

Signature: _____

Customer #: _____

Name: _____

Address: _____ City: _____

Province/State: _____ Postal/Zip Code: _____

Country: _____

Telephone: _____ Fax: _____

E-Mail: _____

Credit Card Payment

☐ Please charge my purchases to my credit card and
I agree to pay a surcharge of 3.5% of the hammer amount.



Card #: _____ Exp Date: _____

Cardholder's Name (as it appears on card): _____

Billing Address if different from address printed above:

Signature: _____

References (First time bidders only): _____

☐ Please tick this box if you
are bidding in US Dollars:

*If necessary to secure a lot,
you may raise my bids by:*

10% ☐ 20% ☐

Bidding is conducted in the following increments:
(Uneven bids will be rounded downwards)

<i>\$10 - \$50.....</i>	<i>\$2.00</i>	<i>\$325 - \$750.....</i>	<i>\$25.00</i>	<i>\$3,250 - \$7,500.....</i>	<i>\$250.00</i>
<i>\$55 - \$130.....</i>	<i>\$5.00</i>	<i>\$800 - \$1,500.....</i>	<i>\$50.00</i>	<i>\$8,000 - \$20,000.....</i>	<i>\$500.00</i>
<i>\$140 - \$300.....</i>	<i>\$10.00</i>	<i>\$1,600 - \$3,000.....</i>	<i>\$100.00</i>	<i>\$21,000 - OVER.....</i>	<i>\$1,000.00</i>

*We are not responsible for bidder errors.
Please check bids and print clearly.*

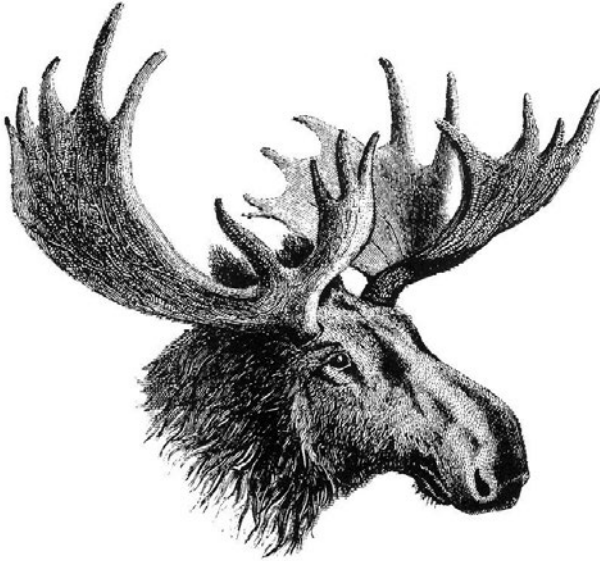
[illegible]

Bid early to avoid disappointment
View this sale on our Web Site: www.easternauctions.com

You may mail, fax, e-mail or phone in your bids. Phone bids must be confirmed in writing. Mailing your bids less than two weeks prior to the sale is not recommended.

Eastern Auctions Ltd.

PUBLIC AUCTION



The *Montclair* Collection of Canadian Postage Stamps

**May 29th – 30th, 2014
Halifax, Nova Scotia**

Eastern Auctions Ltd.

P.O. Box 250, Bathurst, New Brunswick, E2A 3Z2, Canada

Tel: 1 (506) 548-8986 • Fax: 1 (506) 546-6627

E-mail: easternauctions@nb.aibn.com

Web Site: www.easternauctions.com

Copyright © 2014 – All Rights Reserved

AUCTION INFORMATION

For assistance and further information
please contact:

SPECIALISTS IN STAMPS:

Gary Lyon
Yohann Tanguay

WEB SITE:

Luc Doucet

**CONSIGNOR SETTLEMENTS/
ACCOUNTS RECEIVABLE:**

Pamela Ross

**MAILING LISTS AND
SUBSCRIPTIONS:**

Pamela Ross

CATALOGUE EDITORS:

Gary Lyon
Luc Doucet
Yohann Tanguay

SHIPPING:

Catherine Gallagher

VENUE

The Lord Nelson Hotel & Suites

1515 South Park Street
Halifax, Nova Scotia
B3J 2L2 Canada
Tel: 1 (902) 423-6331

Toll Free Tel: 1 (800) 565-2020

For Room Reservations Only

TERMS OF SALE AND AUCTION AGENTS
ARE LISTED AT THE BACK OF THE CATALOGUE.

Viewing Sessions (*Vanguard 1 - Third floor*)

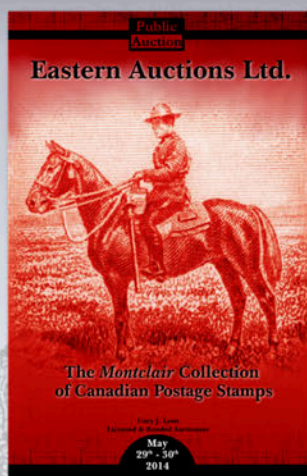
Thursday May 29th, 2014 – 9:00am to 5:00pm

Friday May 30th, 2014 – 9:00am to 5:00pm

Auction Sessions (*Vanguard 1 - Third floor*)

Thursday May 29th, 2014 – 7:00pm (Session One: Lot 1 – 222)

Friday May 30th, 2014 – 7:00pm (Session Two: Lot 223 – 492)



THE MONTCLAIR COLLECTION

A howling rarity! It's a term I have always liked. The first time I heard it, a dealer friend of mine was discussing the Midas collection of British Colonies, which was being sold at auction in England. This collection did indeed contain many items one almost never sees.

I am pleased to present the Montclair collection of Canadian postage stamps. It was formed by a collector desiring to assemble a collection according to the Unitrade Specialized Catalogue, in mint or unused condition. He sought out not just the major catalogue numbers, but all of the varieties as well. This is a daunting undertaking in anyone's mind. Yet the collection shows a remarkable degree of completion and includes many, you guessed it, howling rarities. If you are a collector of XF NH gems then this sale may not be for you. However, knowledgeable philatelists will be greatly impressed with many stamps that one rarely if ever sees, let alone in mint condition.

Regarding rarity, I invite you to study the lot descriptions. Lots such as the Port Hood Provisionals are easily appreciated. On the other hand, elusive items such as the unused ten pence Cartier with major re-entry or the unused half cent Large Queen with papermaker's watermark will take more time to grasp. Such stamps change hands infrequently and often reside in important collections for decades before they reappear at auction.

A word on condition is also necessary. On many very rare Canadian stamps, absolutely sound examples are very difficult if not impossible to find. We pride ourselves in the accuracy of our descriptions and endeavour to describe all imperfections. However, bear in mind that many of the rare stamps in this collection simply do not exist in sound quality.

This auction is being held in conjunction with the annual show of the Royal Philatelic Society of Canada. If you will be travelling to Halifax I would like to welcome you to the area. I hope you will enjoy the weekend and find some additions for your collection, either at the auction or the dealer bourse.



85th Convention of the RPSC
ROYAL *2014* ROYALE

May 30 - June 1, 2014
Halifax, Nova Scotia, Canada

Highlights



Lot 1



Lot 3



Lot 16



Lot 20



Lot 23



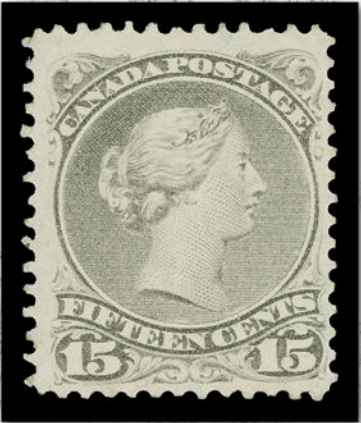
Lot 50

Pence to Québec Tercentenary

Session One: Lot 1 to Lot 222



Lot 66



Lot 104



Lot 130



-Lot 212-





The *Montclair* Collection of Canadian Postage Stamps

Thursday May 29th, 2014
 Session One: Lot 1 – 222
 Auction begins at 7:00 pm (AST)

PENCE

AN EXCEEDINGLY RARE FLAWLESS 1851 THREE PENCE ON LAID PAPER WITH ORIGINAL GUM



- 1 ★ **1, 1851 3p Vermilion on Handmade Laid Paper, Imperforate** A magnificent mint example of Canada's first stamp with large portion characteristic thin whitish original gum associated with the 1851 laid papers, clear to large margins all around, nice colour on fresh paper showing visible horizontal laid lines, completely sound. An exceedingly rare stamp in this premium mint condition – very few IF ANY can really match this example, which we are proud to offer. Very Fine OG
- 120,000.00**

Expertization: 2001 PF certificate

Provenance: Vincent Graves Greene Collection, Sissons, Sale 346, February 1975; Lot 11

After going through numerous important “name-sales” of Canadian philately, we were quite surprised to note that all of the following recognizable names did not own a sound mint OG single of the 1851 Three pence on laid paper – Sir Gawaine Baillie, Bertram, Caspary, Dale-Lichtenstein, Carey Fox, Foxbridge, Guilford, Lilly, Nickle, Pack, Reford, among others.

ONE OF THE RAREST OF ALL B.N.A. STAMPS IN SOUND MINT CONDITION AND THE FIRST WE HAVE OFFERED IN YEARS. MANY OF THE GREAT NAME COLLECTIONS OF THE PAST CENTURY DID NOT POSSESS A MINT EXAMPLE OF THIS STAMP.

**AN ELUSIVE UNUSED EXAMPLE OF THE
1851 SIX PENCE CONSORT ON LAID PAPER**



- 2 ★ **2, 1851 6p Slate Violet on Handmade Laid Paper, Imperforate** An impressive unused example of this great rarity, mostly surrounded by unusually large margins, just clear of design at lower left, exceptional colour for this first issue, on pristine paper and showing prominent laid lines, all remarkable attributes for this very rare unused stamp that is considered to be even rarer than the famed Twelve penny black, and not surprisingly, missing from many advanced collections; nearly Very Fine
- 60,000.00**

Expertization: 1987 Greene Foundation certificate

Provenance: Siegmund Adler, H. R. Harmer, Inc., March 1961; Lot 9

A SELECTED EXAMPLE OF THE 1851 SIX PENCE ON LAID PAPER IN SOUND UNUSED CONDITION, WITH SUPERB COLOUR AND BRIGHT IMPRESSION. VERY FEW HAVE SURFACED IN RECENT YEARS.



**1851 TWELVE PENNY BLACK ON LAID PAPER
A BEAUTIFUL AND SELECTED EXAMPLE
OF THIS FAMOUS CLASSIC STAMP**



- 3 ★ 3, 1851 12p Black on Handmade Laid Paper, Imperforate** A highly desirable unused example of Canada's most famous classic stamp, showing a beautiful overall impression and strong deep colour, clear laid lines including a horizontal vergé. Clear margins at sides and large margins at top and bottom, unused without gum, completely sound and very scarce thus. A selected example of the most prized stamp in all of Canadian philately, Fine to Very Fine **115,000.00**

Expertization: 1953 PF and 2001 Greene Foundation certificates.

Provenance: William L. Moody III, H.R. Harmer, Inc., May 1951; Lot 32
Duncan McLennan, Robson Lowe Ltd., April 1964; Lot 382
Important Canada Pence issues, Sissons, Sale 288, February 1970; Lot 35
Guilford Collection of Pence Issues, Siegel, September 1994; Lot 2039
Warren Wilkinson, H.R. Harmer, Inc. December 1997; Lot 614

THE 1851 TWELVE PENNY BLACK RANKS AMONG THE MOST FAMOUS RARITIES OF THE WORLD. A SOUND AND IMPORTANT EXAMPLE OF THIS WELL DOCUMENTED CLASSIC STAMP WITH EXCELLENT PEDIGREE.



- 4 ★ **1a, 1851 3p Orange Red on Handmade Laid Paper, Imperforate** An impressive unused example of this tremendously difficult stamp, four well balanced large margins, bright colour and clearly showing the laid lines; insignificant black spot at top left, small mark located below the sun visible under ultraviolet light and tiny repaired tear at lower left. Nevertheless a very collectable example of this great rarity - in fact we do not recall seeing or offering another unused 1851 Three pence in this shade, Very Fine appearance; 2014 Greene Foundation cert. (Unitrade \$60,000) **Est. 7,500.00**



5



6



8

- 5 ★ **4, 1857-1858 3p Red on Medium Wove Paper, Imperforate** A beautiful mint example with adequate to very large margins, gorgeous colour and bright impression, showing large part original gum, negligible gum crease; a very nice stamp, VF OG; clear 2000 Brandon cert. **4,000.00**
- 6 ★ **4, 1857-1858 3p Red on Medium Wove Paper, Imperforate** Lovely margined unused example with gorgeous colour and impression, small lightened ink notation on back not visible from the front of no importance for this beautiful stamp, VF; 1997 Greene Foundation cert. **2,000.00**



- 7 ★ **4c, 1857 3p Red on Horizontally Ribbed Soft Wove Paper, Imperforate** An impressive unused example of this difficult stamp, surrounded by ample to enormous margins and showing portion of neighbouring stamp at right, good colour and impression and devoid of any flaws; rarely seen in sound unused condition, VF; 2014 Greene Foundation cert. ex. "Harbour" (May 1996); "Loch" collection (April 1999; Lot 192) **5,000.00**
- 8 ★ **4i, 1856 3p Deep Red on Medium Wove Paper, Imperforate** An attractive unused single with nice margins, fresh with amazing deep colour; seldom encountered in such nice quality, VF; 1998 Brandon cert. **2,200.00**



9



10



12

- 9 ★ **4iv, 1854 3p Red on Thin Hard Oily Wove Paper, Imperforate** Mint single with well clear to large margins, some oxidization, characteristic impression found on this paper type, with brown original gum overall lightly disturbed; a nice example of a scarce stamp, VF OG; 1987 Greene Foundation cert. (identified as Scott #4d; as the #4iv number was not yet allocated at the time) **5,000.00**
- 10 ★ **4iv, 1854 3p Orange Red on Thin Oily Paper, Imperforate** Unused single with characteristic impression for this paper type, light oxidization at top, clear to small margins, Fine; 2014 Greene Foundation cert. **1,250.00**



- 11 ★ **4x, 1857-1858 3p Red on Medium Wove Paper, Imperforate** A selected fresh and full margined unused single, bright colour and clear impression, with prominent **Vertical Stitch Watermark**, tiny pinhole, a rare stamp in unused condition, VF; 2006 Greene Foundation cert. **6,000.00**
- 12 ◎ **4x, 1854 3p Orange Red on Thin Paper, Imperforate** Lightly cancelled example with clear to small margins, clearly showing **Vertical Stitch Watermark**, light concentric rings cancel in blue, scarce, Fine; 2014 Greene Foundation cert. **500.00+**



13



14

- 13 ★ **5, 1855 6p Slate Grey on Medium Wove Paper, Imperforate** A rare unused example, margins clear of outer frameline at top and at bottom, huge side margins, deep colour and strong impression, minute tear at foot and light horizontal pressed crease are hardly visible and not mentioned in accompanying certificate. A difficult stamp to obtain in unused condition; backstamped twice by expert Roger Calves, F-VF; clear 1991 Alex Rendon cert. (Unitrade \$25,000) **Est. 7,500.00**
- 14 ★ **5b, 1856 6p Greenish Grey on Medium Wove Paper, Imperforate** An attractive example of this classic stamp in unused condition, margins well clear at foot to large; practically invisible stain at top, printed in a lovely shade on fresh paper, completely sound and rarely seen as such. This unused classic stamp is missing from even the most advanced collections, VF; 1982 RPSL cert. *ex. "Loch" collection (April 1999; Lot 127)* **35,000.00**
- 15 ★ **7, 1855 10p Blue on Thin Crisp Wove Paper, Imperforate** Unused with trivial soiling and minor faults, clear to ample margins, an elusive stamp in unused condition, Fine appearance; 2014 Greene Foundation cert. (Unitrade \$6,000); *ex. Colonel E. H. R. Green (Part VI, November 1942; Lot 422)*
(Illustrated on Page 12) **Est. 1,000.00**



- 16 ★ **7a, 1858 10p Blue on Thicker White Wove, Imperforate** A magnificent mint example of this classic stamp, displaying exceptional colour with a clear bright impression on pristine wove paper, surrounded by large margins and showing unusually full original gum, relatively lightly hinged. A superb stamp in all respects, easily ranking among the finest mint original gum examples extant - an absolute gem for the connoisseur, XF OG **27,000.00+**

Expertization: 1966 Royal Philatelic Society, London and 1985 Greene Foundation certificates (latter identified with old Canadian Specialized number and stating: "... thick paper, Mint, O.G., genuine in all respects")

Provenance: General Robert Gill, Robson Lowe Ltd., October 1965; Lot 36
"Lindemann" (Private Treaty 1997)

AN EXTREMELY FINE MINT ORIGINAL GUM EXAMPLE OF THIS HIGHLY SOUGHT-AFTER CLASSIC STAMP - THE FINEST EXAMPLE WE CAN RECALL OFFERING IN MANY YEARS.



- 17 ★ **7ii, 1858 10p Blue on Medium White Wove Paper, Imperforate** An impressive unused example of the elusive **Major Re-entry** (Position 29), very noticeable doubling in framelines, ovals and surrounding lettering - the most prominent and dramatic variety to be found on this stamp; negligible stain spot at top is hardly visible, clear to large margins, lovely radiant colour on fresh white paper. A very rare plate variety in unused condition on the thicker wove paper, Very Fine (Unitrade lists this stamp at \$6,000 in Fine unused condition on the more common thin crisp paper) **Est. 7,500.00+**

Expertization: 2004 Greene Foundation certificate

A SELECTED UNUSED EXAMPLE DISPLAYING THE WELL DOCUMENTED MAJOR RE-ENTRY - VERY FEW CAN EXIST. A MOST DESIRABLE STAMP FOR THE SPECIALIST.



15



18



19

- 18 ★ **8, 1857 ½p Rose on Medium Wove Paper, Imperforate** Unused single with unusually large margins, minor colour loss and hint of soiling, still an impressive and sound example, VF; 2014 Greene Foundation cert. (Unitrade \$1,400) **Est. 500.00**
- 19 ★ **8ii, 1857 ½p Rose on Medium Wove Paper, Imperforate** Large margined unused example, some faults and lightened stain spots, shows the elusive Major Re-entry (Position 120), VF appearance; 2014 Greene Foundation cert. (Unitrade \$4,000) **Est. 750.00**



- 21 ★ **9iii, 1857 7½p Green on Medium Wove Paper, Imperforate** An incredibly rare unused example clearly showing **Horizontal Stitch Watermark**; small thin at lower left, irregular margin on left side barely touching outer frameline in places as a result, nevertheless the only known example of the stitch watermark we have seen in unused condition, Fine; 2008 Greene Foundation cert. (Unitrade catalogue does not list this in unused condition, another indication of its great rarity) **Est. 5,000.00+**



- 22 ◎ **9iv, 1857 7½p Green on Medium Wove Paper, Imperforate** Horizontal pair with ample to large margins, used with pen cancels removed and gum added; left-hand stamp shows the elusive **plate flaw in "1d" of fraction in upper right corner**. Rarely seen especially in a multiple; to the best of our knowledge this variety is unknown in unused condition, VF; 2014 Greene Foundation cert. **14,500.00**

Provenance: Dale-Lichtenstein, H.R. Harmer Inc., Sale 7, January 1970; Lot 921
 "Loch" collection, Firby, April 1999; Lot 154

**A MAGNIFICENT AND CHOICE MINT
EXAMPLE WITH ORIGINAL GUM**



- 20 ★ 9, 1857 7½p Green on Medium Wove Paper, Imperforate** A superb mint example with exceptional colour and sharp impression on fresh paper, surrounded by well clear to very large margins for the issue, large part original gum that has been slightly disturbed in places. A beautiful mint stamp with radiant colour, very seldom encountered in such nice quality, VF OG. **24,000.00**

Expertization: 2014 Greene Foundation certificate.

Provenance: Alfred Caspary, H.R. Harmer, Inc., October 1956; Lot 124



**RARELY OFFERED MINT OG EXAMPLE
OF THE 1857 SIX PENCE ON THICK SOFT PAPER**



- 23 ★ 10, 1857 6p Reddish Purple on Thick Soft Wove Paper, Imperforate** A remarkable mint example of this keenly sought-after stamp, just into outer frameline at top but clear of design, unusually large margins on other sides, characteristic pastel colour and sharp impression associated with this printing, small thin at lower right, lovely fresh colour and possessing large part original gum somewhat disturbed. A rare mint stamp, F-VF OG. **58,000.00**

Expertization: 2014 Greene Foundation certificate.

Provenance: Edward Granger, H.R. Harmer Ltd. London, October 1958; Lot 60

AN ATTRACTIVE MINT EXAMPLE OF THE 1857 SIX PENCE PRINCE ALBERT ON THE DISTINCTIVE THICK SOFT PAPER - VERY FEW EXAMPLES STILL RETAIN THEIR ORIGINAL GUM. EASILY AMONG THE MOST CHALLENGING STAMPS OF CANADA TO OBTAIN MINT WITH ORIGINAL GUM.



- 24 ★ **11i, 1858 ½p Lilac Rose, Perf 11¼** Selected mint example of this notoriously difficult stamp in the distinct scarcer shade, very well centered with characteristic narrow margins, mint with small part original gum. A rare mint stamp - very few examples exist in such nice quality, VF OG; 1999 Greene Foundation cert. **10,000.00**

A CHOICE MINT ORIGINAL GUM EXAMPLE OF THE FIRST PERFORATED 1859 HALF PENNY LILAC ROSE SHADE. RARELY SEEN AND THE FIRST ONE WE CAN RECALL OFFERING IN MINT CONDITION.



- 25 ★ **12, 1859 3p Red, Perf 11¼** A rare mint single of this difficult perforated issue, quite nicely centered for this difficult first perforated issue, perforations clear of design on three sides, brilliant colour on fresh paper, part original gum somewhat disturbed. An attractive and desirable example of this rare classic stamp in mint condition, Fine+; 1998 BPA cert. **24,000.00**



- 26 ★ **12i, 1859 3p Brown Red, Perf 11¼** A rare mint single showing large portion of "... Wright, Hatch & Edson New York" **plate imprint** at top, scissor separated as often seen on this first perforated issue, deep colour, strong impression and large part original gum. An appealing plate imprint positional mint stamp, Fine OG; clear 1984 Greene Foundation cert. ex. "*Lindemann*" (1997), catalogue value for normal stamp **24,000.00**



- 27 ★ **13, 1859 6p Brown Violet, Perf 11¼** An impressive mint single, quite well centered for this difficult first perforated issue, minute perf nick at foot and light vertical crease at top mentioned in accompanying certificate, the latter we are unable to see, possessing deep colour, strong impression and small part original gum; A. Brun guarantee backstamp, VF; clear 1996 Brandon certificate and a 2014 Greene Foundation cert. *ex. Vincent Graves Greene collection (February 1975; Lot 189)*
60,000.00

A PREMIUM EXAMPLE OF THIS SELDOM SEEN STAMP, MINT WITH PART ORIGINAL GUM AND WELL ABOVE AVERAGE CENTERING FOR THIS CHALLENGING FIRST PERFORATED ISSUE OF CANADA.



- 28 ◎ **13a, 1859 6p Grey Violet, Perf 11¼** Used example of this notoriously difficult perforated stamp, typical centering for the issue, small tear at centre left and couple clipped perfs at top right, otherwise a Fine and scarce stamp; 2014 Greene Foundation cert.
5,000.00

CENTS



29



30



31

- 29 ★ **14a, 1c Rose on Wove Paper** A large margined imperforate pair, ungummed as issued, huge margins, tiny nick in left margin, a very scarce item, VF; 1982 Greene Foundation cert. *ex. General Robert Gill (October 1965; Lot 68)*
8,000.00
- 30 ◎ **14bii, 1859-1862 1c Deep Rose on Thick Paper, Perf 11¼** Well centered used single, grid cancellation, showing uncleared perf discs associated with this paper, early shade on fresh paper, VF and attractive
500.00
- 31 ★ **14ii, 1865-1868 1c Rose on Very Thick Paper, Perf 12** Scarce unused single with deep colour, a few insignificant black specks mentioned for strict accuracy, a very elusive paper type in unused condition, F-VF; 2014 Greene Foundation cert.
1,200.00



32



34



35



36



33

- 32 ★ **14iii, 1860-1862 1c Deep Rose on Thin Paper, Perf 11 1/4** Unused single on the scarce thin paper , scarce, Fine **900.00**
- 33 ◎ **14iv, 14v, 1c Rose, Perf 12** Used singles with printing flaws - late stage of the "Q" **plate flaw** visible in oval below "O" of "ONE" and noticeable weak entry at lower left, minor soiling area on back, otherwise sound, Fine example; plus "E" **plate flaw** clear of Toronto MR 20 65 split ring datestamp, tiny corner crease at upper left, Fine; a scarce duo. **1,150.00**
- 34 ★ **14v, 1863-1865 1c Rose, Perf 12x11 1/4** An unusually well centered example showing the elusive "E" **plate flaw** (Position 34), unused, regummed. A very scarce stamp, VF **2,500.00**
- 35 ★ **14viii, 1863-1865 1c Carmine Rose, Perf 12x11 1/4** Quite well centered mint single with amazing rich colour and large part original gum, negligible gum bend. A select mint stamp, nearly Very Fine centering **935.00**
- 36 ★ **14viii, 1863-1865 1c Rose Red, Perf 12x11 1/4** Lovely fresh unused single in a darker than usual shade, reasonably centered for the issue, F-VF **375.00**



37



38

- 37 ★ **15 (early printing), 1860-1862 5c Reddish Orange, Perf 11 1/4** Unused example with intact perforations and superior centering, scarce thus, VF; 1995 Greene Foundation cert. **750.00+**
- 38 ★ **15a, 1864-1868 5c Vermilion** Imperforate single in the issued colour on wove paper with brilliant fresh colour, surrounded by huge margins, very scarce, VF+; 2007 Greene Foundation cert. (Unitrade \$17,500 for pair) **Est. 2,000.00**



- 39 ★ **15iii, 1860-1862 5c Vermilion on Thick Wove Paper, Perf 11¾** An impressive and very scarce unused pair on this elusive and distinct paper, characteristic uncleared perf discs associated with this paper. An appealing and exhibition caliber pair, Fine; 2006 Greene Foundation cert. **1,800.00+**



- 40 ★ **15v, 1867 5c Vermilion, Perf 12** Striking unused example of this impressive and seldom offered **Major Re-entry** (Position 28; State 10) clear doubling of oval framelines, lettering and framelines, centered right; truly negligible tiny black ink spot in "D" of "CANADA" harshly observed in accompanying certificate, Fine; 1995 Greene Foundation cert. **1,500.00**



41

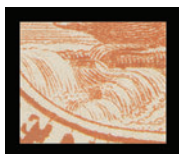
42

- 41 ★ **15 variety, 1866 5c Orange Red, Perf 12** Mint single with wing margin at left, quite well centered, showing **Re-entry** throughout design (Position 11), small portion of imprint at lower left, large part OG, F-VF **1,375.00+**

- 42 ★ **15 variety, 1865-1868 5c Vermilion, Perf 12** Mint single with deep colour, shows the "**Comet**" flaw (Whitworth No. 62), part original gum, rare mint, Fine OG; 1989 Greene Foundation cert. **Est. 750.00+**
ex. "*Lindemann*" (1997)



- 43 ◎ **15vi, 15ix, 5c Vermilion** Two used singles with listed plate varieties - 1863 (circa.) "**Log in Waterfall**" (Position 50) on thick paper, perf 11¾x12, minute abrasion spot at top left and couple short perfs; and 1866 (circa.) "**Leaping Fish**" (Position 54), perf 12, one short perf at left, Fine and sound **950.00**



- 44 ★ **15vii, 1867 5c Vermilion, Perf 12** An attractive unused single showing the rarely seen "**Rock in Waterfall**" plate variety (Position 53), reasonably centered for the issue, bright colour on fresh paper. In our opinion greatly undercatalogued considering its elusiveness, very few can exist in unused condition, Fine+; ex. "*Lindemann*" (1997) **1,350.00+**



- 45 ★ **16, 1859 10c Black Brown (Printing Order 1A), Perf 11¾** A nice unused example of this elusive and keenly sought-after first printing showing characteristic deep rich colour, typical centering for the issue, perforations clear of design on three sides; a desirable stamp missing from many advanced collections, Fine; 2000 Greene Foundation cert. **8,000.00**



46



47

- 46 ★ **17bii, 1863-1864 10c Brown on Very Thick Paper, Perf 12x11¾** An extremely well centered mint single, separated by scissor at right, lovely bright colour on the distinctive thick paper and with large part original gum; a very scarce stamp, VF OG; 2000 David Brandon cert. (Listed in Unitrade, but unpriced in unused condition) **Est. 2,000.00+**
- 47 ★ **17c, 10c Red Lilac on Wove Paper** An impressive imperforate pair, ungummed as issued, shows portion of sheet margin at top, large margins on other sides, fabulous colour, tiny thin speck and light pressed crease on right stamp, nevertheless a very rare imperforate pair of which only a handful exist, VF appearance; 1982 Greene Foundation cert. **15,000.00**



- 48 ★ 17e subsequent printing, 1860 10c Deep Yellowish Purple Brown (Printing Order 5A), Perf 11½ A stunning mint single with sheet margin at foot, reasonably well centered with large margins, perforations well clear of design on three sides, fabulous colour and post office fresh, couple creases entirely confined to the sheet margin, the stamp itself is completely sound with full original gum, partially (lightly) disturbed from a hinge. A marvelous example of this early printing, F-VF OG; 2014 Greene Foundation cert. **8,125.00**



49



51

- 49 ◎ 17iv, 1860 10c Reddish Agate (PO 4), Perf 11½ A precisely centered used single showing the "String of Pearls" (Position 3) plate variety, certificate states "cleaned" which is hard to see, neat concentric rings cancellation, VF and scarce; 2014 Greene Foundation cert. **1,000.00**



- 50 ★ 17v, 1865-1867 10c Red Lilac, Perf 12 An impressive unused example showing the "Double Epaulettes" plate variety (Position 61), very well centered within large margins. A superior unused example of this elusive variety, it would be a challenge to obtain a finer example, XF; 1986 & 1998 Greene Foundation cert., ex. *Julian Smith (October 1986; Lot 53); "Lindemann" (1997)* **4,000.00+**
- 51 ★ 17vi, 1865-1867 10c Red Lilac, Perf 12 An exceptional unused example with superb centering and unusually well-balanced large margins, showing the "C" plate flaw (Position 20), small portion of imprint at right. A remarkably choice example of this flaw that was constant on later printings - a wonderful stamp, XF GEM; 2009 Greene Foundation cert., ex. *"Lindemann" (1997)* **2,500.00+**



52



53

- 52 ★ **18a, 1859-1861 12½c Blue Green, Perf 11¼** An elusive early printing mint single, quite well centered for the issue, gorgeous rich colour and possessing small part original gum; difficult to find, F-VF OG; 2014 Greene Foundation cert. **2,800.00**
- 53 ★ **18b, 12½c Blue Green on Wove Paper** Superb imperforate pair with full to large margins, ungummed as issued, brilliant colour on fresh paper, choice and rarely seen as such, XF; 1982 Greene Foundation cert. **9,000.00**



54

55

- 54 ★ **18iv, 1863-1864 12½c Deep Green, Perf 12x11¼** A marvelous unused single in a lovely rich shade showing the **Major Re-entry** (Position 94) visible in "EN" of "PENCE" and doubling of oval and in "POSTAGE"; a rare stamp in unused condition, Fine+; 1997 Greene Foundation cert. (not mentioning the plate variety) **1,800.00+**
- 55 ◎ **18vi, 1859-1863 12½c Dark Green, Perf 11¼** An unusually well centered used single showing clear **Horizontal Stitch Watermark**, nicely placed grid cancel, couple irregular perfs at right; a very scarce watermarked stamp, VF (Catalogue value is for Fine centering only; unpriced for VF) **2,000.00**



- 56 ★ **19, 1863-1864 17c Blue, Perf 12x11¼** A marvelous unused single, superb colour on fresh paper, very well centered with oversized margins, perforations well clear of design on all sides. A desirable stamp in premium condition, VF+; 2014 Greene Foundation cert. **1,800.00+**



57



58



60



59

- 57 ★ **19, 1865-1867 17c Blue, Perf 12** Unused single showing a striking extra vertical line of perforations at top right; an unusual perforation variety with eye-appeal, Fine; 1999 Greene Foundation cert. **Est. 750.00+**
- 58 ★ **19 (shade), 1865 17c Very Deep Dark Blue, Perf 12** Mint single with incredible colour and strong impression, intact perforations and part original gum; a nice stamp, Fine+; 2014 Greene Foundation cert. **2,250.00+**
- 59 ★ **19b, 17c Blue on Wove Paper** Imperforate vertical pair, small scissor cut between stamps and small thin at lower right, a very scarce pair with full to large margins and VF appearance; 1982 Greene Foundation cert. (Unitrade \$8,500) **Est. 3,000.00**
- 60 ◎ **19iv, 1861 17c Steel Blue, Perf 11¼** Selected fresh used single, showing **Re-entry** (Position 5) in "GE" of "POSTAGE", lightly cancelled, Fine; 2014 Greene Foundation cert. **300.00+**



61



62

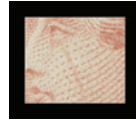


63

- 61 ★ **20, 1864 2c Rose, Perf 11¼** Lovely fresh mint single, well centered for this stamp, part original gum disturbed at top from hinge removal. Still an attractive example, F-VF OG; 2014 Greene Foundation cert. **1,750.00**
- 62 ★ **20aiii, 18651-1868 2c Deep Claret Rose, Perf 12** Exceptional mint single with superior centering and unusually large margins, deep rich colour, showing extended frameline variety at bottom left, large part original gum. An attractive stamp, superb in all respects, XF LH; 2012 Greene Foundation cert. **2,750.00+**
- 63 ★ **20b, 2c Rose on Wove Paper** Imperforate pair, ungummed as issued, ample to large margins, light diagonal crease on left stamp, otherwise fresh with VF appearance; clear 1986 Greene Foundation cert. *ex. Julian Smith (October 1986; Lot 30)* **5,000.00**



64



65

- 64 ★ **20v, 1865-1868 2c Rose, Perf 12** Appealing unused single, well centered with uncharacteristically large margins, perforations clear on all sides, colour slightly oxidized, shows dash in lower right "2" variety, VF; 2014 Greene Foundation cert. **1,200.00**
- 65 ★ **20 variety, 1865-1868 2c Carmine Red, Perf 12** Attractive unused single, lovely bright colour and reasonably centered, shows unusual natural ink smear on Queen's face, quite prominent and clearly visible; small negligible stain on reverse, F-VF; 2014 Greene Foundation cert. (Catalogue value for normal stamp) **700.00+**

LARGE QUEEN

EXCEEDINGLY RARE WATERMARKED HALF CENT LARGE QUEEN



66

- 66 ★ **21b, 1868 ½c Black on Bothwell Watermarked Paper, Perf 12** An exceedingly rare unused single on watermarked paper, showing a nearly full "S" letter of "CLUTHA MILLS", bright colour and full perforations with characteristic uncleared perf discs associated with the Bothwell paper; hard to see tiny pinhole at top left not mentioned in accompanying certificate. Without question the Half cent watermarked is among of the rarest stamps in all of Canadian philately, a Fine example of a highly sought-after stamp. The first unused example we have had the pleasure to offer. **25,000.00**

Expertization: 1998 Greene Foundation certificate.

Provenance: John Siverts, Part I, May 1989; Lot 664

Shows the constant "spur" in scroll left of "H" plate variety.

THE FAMOUS AND WELL-DOCUMENTED WATERMARKED HALF CENT LARGE QUEEN --
VERY FEW EXAMPLES EXIST AND ESPECIALLY DESIRABLE IN UNUSED CONDITION.



67



68



69

- 67 ★ **21, 1868-1872 ½c Black on Medium Horizontal Wove Paper, Perf 12** Bright mint single, well centered and full original gum, VF VLH **250.00**
- 68 ★ **22, 1868 1c Brown Red on Medium Horizontal Wove, Perf 12** A nicely centered unused single with deep colour on fresh paper, VF **1,000.00**
- 69 ★ **22a, 1868-1869 1c Brown Red on Bothwell Watermarked Paper, Perf 12** A scarce unused example showing large portion of watermark "E" letter of "E. & G.", negligible perf flaw at lower left and tiny corner perf crease at upper right, a Fine and very collectable example of this elusive stamp; 2014 Greene Foundation cert. **2,000.00**



70



71



72



- 70 ★ **22b, 1868 1c Brown Red on Thin Hard Wove, Perf 12** Unused example of this distinctively crisp paper, deep colour and reasonably centered, F-VF **750.00**
- 71 ★ **22i, 1869 (Early) 1c Brown Red on Soft White "Blotting" Paper, Perf 12** A rare mint example of this distinctive paper with characteristic rich colour and sharp impression, minute sealed tear at lower right is hardly visible, unusually full original gum. The overall condition is much superior than normally encountered making this a desirable stamp, Fine LH; 1989 Greene Foundation cert. *ex. John Siverts (Part I, May 1989; Lot 682)* **2,500.00**
- 72 ★ **22iii, 1868 1c Brown Red on Medium Horizontal Wove, Perf 12** Well centered mint single showing the elusive **"Burr" to left of Queen's head plate variety**, bright colour, partly disturbed OG. A very scarce variety, F-VF; 2007 Greene Foundation cert. (identified as normal #22 - variety was not listed at that time; now listed in the Unitrade catalogue but still currently unpriced) **Est. 1,500.00+**



- 73 ★ **23a, 1869 1c Orange on Medium Horizontal Wove, Perf 12** A very well centered mint single with large part disturbed original gum and couple short perfs at right, latter not mentioned in accompanying certificate, VF OG; 1997 Greene cert. (Catalogue value for unused condition #22 without gum) **3,000.00**



74



75



76

- 74 ★ **24, 1868 2c Green on Medium Horizontal Wove, Perf 12** Selected unused single, lovely pastel colour and nicely centered within large margins, VF; 2014 Greene Foundation cert. (identified as Duckworth Paper 3) **1,400.00**
- 75 ★ **24, 1868 2c Green on Medium Horizontal Wove, Perf 12** A most attractive unused example, regummed, bright colour with sharp impression on fresh paper, F-VF; 2014 Greene Foundation cert. (identified as Duckworth Paper 10) **1,000.00**
- 76 ★ **24a, 1868 2c Blue Green on Bothwell Watermarked Paper, Perf 12** A desirable unused example showing nearly complete watermark "BO" letters of "BOTHWELL", regummed with typical perfs at right associated with this paper, Fine and very scarce in unused condition; 2014 Greene Foundation cert. **2,000.00**



- 77 ★ **25, 1868 3c Red on Medium Smooth Horizontal Wove, Perf 12** A very well centered mint single with gorgeous colour and large part original gum; a very nice stamp, VF OG; 2014 Greene Foundation cert. **5,000.00**

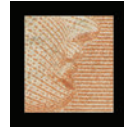


78



79

- 78 ★ **25a, 1868 3c Red on Bothwell Watermarked Paper, Perf 12** Unused example, colour slightly oxidized, showing portion of watermarked "OT" letters of "BOTHWELL" at foot; a very scarce unused stamp, Fine; 2014 Greene Foundation cert. **4,000.00**
- 79 ★ **25i, 1868 3c Orange Red on Medium Horizontal Wove, Perf 12** A precisely centered unused example, slightly oxidized colour mentioned for accuracy, VF; 2014 Greene Foundation cert. **2,500.00**



80



81



82

- 80 Ⓢ **25iv, 1868-1870 3c Red on Medium Horizontal Wove, Perf 12** Fresh used single, showing clear "Goatee" variety away from centrally struck two-ring '7' cancel; small thin at top left, Fine and scarce **1,000.00**
- 81 Ⓢ **25vii, 1868-1870 3c Red on Medium Horizontal Wove, Perf 12** Nicely centered used example with bright colour on fresh paper, showing a prominent and elusive "Shaving Nick" plate variety, light central four-ring '34' (Sarnia, C.W.) cancel, VF (Catalogue value for Fine centering only; unpriced as VF) **900.00+**
- 82 Ⓢ **25vii, 1868-1869 3c Red on Medium Horizontal Wove, Perf 12** Quite well centered example showing the very scarce "Shaving Nick" variety, couple negligible shorter perfs, portion of Toronto March 1869 CDS postmark, F-VF (Catalogue value is for Fine only; unpriced as VF) **900.00+**



- 83 ★ **26iv, 1875 5c Olive Green on Vertical Stout Wove, Perf 11¾x12** A reasonably centered unused single, bright colour and nearly Very Fine centering; 1992 RPSL cert. **1,400.00**



- 84 ★ **27, 1868 6c Dark Brown (Plate 1) on Medium Horizontal Wove, Perf 12** A post office fresh mint example, quite well centered for this challenging stamp, uncleared perf discs at right, lovely true rich colour on pristine paper and with large portion white, streaky original gum. A beautiful stamp, F-VF OG; 2014 Greene Foundation cert. (identified as Duckworth paper 3 or 4) **3,700.00**



85



86



87

- | | | | |
|----|---|---|-----------------------|
| 85 | ⊙ | 27ii, 1869-1870 6c Brown (Plate 1) on Soft Very White "Blotting" Paper, Perf 12 Used single on this elusive fragile paper, completely sound, fresh and lightly cancelled, VF | 1,250.00 |
| 86 | ★ | 27 variety, 1869 6c Brown (Plate 1) on Coarse Vertical Wove Paper, Perf 12 Unused single on this scarce paper (Duckworth Paper 7), characteristic rich colour, blurry impression and showing intact perforations and trace of original gum, Fine; 2014 Greene Foundation cert. | Est. 1,000.00+ |
| 87 | ★ | 27vi, 1869-1870 6c Dark Brown (Plate 1) on Bothwell Paper, Perf 12 A scarce unused example of the distinctive vertical weave paper, couple typical shorter perforations, Fine and rare (This paper type is unpriced in unused condition) | Est. 1,000.00+ |



88



89

- | | | | |
|----|---|--|----------|
| 88 | ⊙ | 27vii, 1870 6c Brown (Plate 2) on Thinner Horizontal Wove, Perf 12 A lightly cancelled single showing a prominent Vertical Stitch Watermark variety, slightly dulled perfs at top, otherwise a sound and very scarce stamp, Fine; clear 2009 Greene Foundation cert. | 1,500.00 |
| 89 | ⊙ | 27viii, 1868-1870 6c Dark Brown (Plate 1) on Vertical Wove, Perf 12 Lightly used example with rich colour and clearly showing the Horizontal Stitch Watermark variety, light horizontal crease, usual nibbed perfs not mentioned in certificate, a rare stamp, Fine; 2008 Greene Foundation cert. | 1,750.00 |



- 90 © **27iii / vi, 1869 6c Brown (Plate 1) on Bothwell Paper, Perf 12** An unusually well centered example characteristic perforations associated with this particular paper, shows the **Major Re-entry** (Position 93) visible in "S" of "POSTAGE" and doubling of lower frameline, unobtrusive concentric rings cancel. A nice stamp, VF **750.00+**



- 91 ★ **28, 1869 12½c Blue on Medium Vertical Wove, Perf 12** Choice centered mint single with lovely deep rich colour on fresh paper, large part original gum. A beautiful stamp, VF OG; 2014 Greene Foundation cert. **2,800.00**



92



93



94

- 92 ★ **28a, 1868-1869 12½c Blue on Bothwell Watermarked Paper, Perf 12** A rare mint example showing large portion of watermark "C" letter of "CLUTHA MILLS", nibbed perfs at sides as often seen on the Bothwell paper, otherwise sound with large part original gum, Fine; 2014 Greene Foundation cert. **5,000.00**

- 93 ★ **28b, 1868 12½c Deep Blue on Thin Hard Wove, Perf 12** An exceptional unused example, very well centered with well-balanced large margins, rich colour on fresh paper; a superb stamp, XF; 2008 Greene Foundation cert. **1,350.00+**

- 94 ★ **28i, 28ii, 1869 12½c Milky Blue on Medium Horizontal Wove, Perf 12** Lovely mint single with gorgeous bright colour and showing the **missing frameline at left**, large part original gum, lightly sweated, F-VF OG; 2014 Greene Foundation cert. **2,550.00**



- 95 ★ **28 variety, 12½c Deep Dark Blue on Very Thin Vertical Wove, Perf 12** A stunning unused example on the sought-after and **very rare Duckworth Paper Type 9a**, characteristic rich colour and unusually sharp impression on distinct white, vertical mesh absorbent paper - the first one we have seen. A great showpiece and ideal for the specialist, F-VF; 1994 Greene Foundation cert. (described as #28 variety showing sharp impression on soft white paper, unused) **Est. 2,000.00+**



- 96 ★ **29a, 1879 15c Pale Grey Violet on Stout Smooth Horizontal Wove, Perf 11½x12** An impressive mint single, quite well centered with uncommonly seen large margins, nice colour and possessing large part original gum, which has been slightly sweated. Much nicer than normally encountered; rarely seen with original gum, nearly Very Fine centering; 2014 Greene Foundation cert. **3,000.00**



- 97 ★ **29a, v, 1873-1875 15c Brownish Dull Purple on Bothwell Paper, Perf 11½x12** A fresh mint single on the distinctive vertical weave paper **Bothwell paper combined with the rare perforation variety** - 11.5x12, with part dull, streaky original gum. Reported in Gerald Firth book "Canada 15 Cents" on page 46 titled appropriately "A Remarkable Discovery". This is the first such example we can recall seeing, a great stamp for the specialist, F-VF OG; 2014 Greene Foundation cert. (identified as #29a, v, mint, OG, perforated 11.5 x 12 on Bothwell paper 1873-1875, genuine in all respects.) **Est. 2,000.00+**



- 98 ★ **29b, 1873-1875 15c Red Lilac on Stout Smooth Horizontal Wove, Perf 12** An Impressive large margined mint single with true bright colour on fresh paper, quite well centered, full original gum, faintly sweated. A very scarce early printing in nice condition, VF OG; 2014 Greene Foundation cert. **2,400.00**



- 99 ★ **29c, 1868-1869 15c Pale Grey Violet on Bothwell Watermarked Paper, Perf 12** A scarce unused single, small light corner crease at top left not mentioned in accompanying certificate, showing portion of watermark "TH" letters. A very rare stamp in unused condition, Fine; clear 2001 Greene Foundation cert. **4,000.00**



100



103

- 100 ◎ **29c, 1868-1869 15c Pale Grey Violet on Bothwell Watermarked Paper, Perf 12** Used single showing bottom portion of watermarked "LL" letters, a few typical nibbed perfs at sides, light cork cancel and portion of London British circular receiver in red, Fine **750.00**



101



102

- 101 ★ **29d, 1896 (circa.) 15c Dark Brown Purple** Vertical imperforate pair, distinct rich colour, large margins and full original gum, never hinged, tiny natural paper inclusion on lower stamp, VF NH; 1992 BPA cert. **3,000.00**
- 102 ★ **29d, 1896 (circa.) 15c Dark Brown Purple** Imperforate mint pair with full to large margins, hint of toning but with full original gum relatively lightly hinged, VF **1,500.00**
- 103 ★ **30c, 1880 15c Dark Violet on Very Thick White Vertical Wove, Perf 12** Scarce unused example of this distinct paper, regummed but sound, unlike most examples we have seen, Fine; 2014 Greene Foundation cert. **3,500.00**

**AN OUTSTANDING UNUSED EXAMPLE
OF THE SCRIPT WATERMARKED
FIFTEEN CENT LARGE QUEEN**



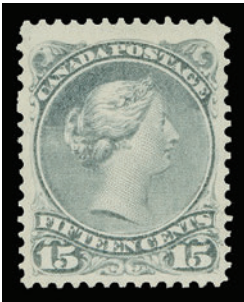
- 104 ★ 30d, 1876-1877 15c Greenish Grey on Stout Smooth Horizontal Wove, Perf 11½x12 An impressive unused example of the rare SCRIPT WATERMARK, showing large portion of watermarked letter at foot, unusually well centered for this as most examples we have seen had perforations cutting into design on at least one side; noticeably bright colour and impression, intact perforations and completely sound. Easily one of the great rarities of the Large Queen issue and especially desirable in such superior quality, Very Fine; 2002 Greene Foundation cert. **30,000.00**

Alex. r. Pirie & Sons

The Pirie Watermark



- 105 ☉ **30d, 1876-1877 15c Greenish Grey on Stout Smooth Horizontal Wove, Perf 11½x12** A remarkable used example on the sought-after SCRIPT WATERMARKED PAPER, clearly showing **nearly complete "Pi" watermark letters** of "Alexr. Pirie & Sons", a few negligible nibbed perfs at foot of no importance, sound with exceptional centering for this tremendously difficult stamp, characteristic colour and impression, large portion of Arthabaskaville split ring datestamp. A rare and desirable stamp in selected condition, Very Fine; 1964 BPA certificate, signed by Robson Lowe et al. **8,000.00**



106



107

- 106 ★ **30iii, 1894-1896 15c Bluish Grey on Vertical Wove, Perf 12** A fresh unused example of the "Pawnbroker" variety (Position 10), faint diagonal crease, very well centered with large margins, VF **1,400.00**
- 107 ★ **30v, 1894-1896 15c Slate Grey on Vertical Wove, Perf 12** Fresh mint horizontal pair, left-hand stamp shows the **cracked plate variety** (Position 65), part original gum with some paper adhesion, Fine and very scarce **1,900.00**



108



109

- 108 ★ **31, 1868 1c Brown Red on Laid Paper, Perf 12** Unused single, centered to top right, oxidized colour, some small thins and perf faults, a collectable example of this very scarce stamp in unused condition, Fine appearance; 2014 Greene Foundation cert. (Unitrade \$30,000) **Est. 3,000.00**
- 109 ★ **33, 1868 3c Brown Red on Laid Paper, Perf 12** Rare unused example in the distinct bright shade, clearly visible horizontal laid lines and additionally showing the vertical "vergé" line, centered right, Very Good centering and sound; 2001 Greene Foundation cert. **8,500.00**

SMALL QUEEN



110



112

- 110 ★ **34a, 1890s ½c Black on Greyish Wove Paper (Ottawa printing)** Selected imperforate pair with sheet margin at left and large margins on other sides, full original gum, VF LH **800.00**



- 111 ★ **34iii, 1890s ½c Black (Ottawa printing)** Choice and well centered mint gutter strip of four, fresh with full original gum, showing characteristic offset on reverse, VF LH **400.00+**

- 112 ★ **35b, 1890s 1c Yellow (Second Ottawa printing)** Imperforate pair with good margins, bright colour and full original gum relatively lightly hinged, VF **600.00**



113



114



115



116

- 113 ★ **35d, 1874-1876 1c Orange Yellow (Montreal printing), Perf 11½x12** Unusually well centered mint single with rich colour on fresh paper, VF LH **600.00**

- 114 ★ **35ii (early), 1870 1c Brownish Orange (First Ottawa printing), Perf 11.85** Quite well centered mint example of this difficult and under-rated printing, large part dull smooth original gum, scarce this nice, VF OG **Est. 500.00+**

- 115 ★ **35iii, 1879 1c Lemon Yellow (Montreal printing), Perf 11½x12** Reasonably centered mint example of this scarce printing, distinctive bright shade and with full, dull, streaky original gum, never hinged; small natural gum inclusion not mentioned in accompanying certificate. A tough stamp, F-VF NH; 2014 Greene Foundation cert. **1,100.00**

- 116 ★ **35 variety, 1890s 1c Yellow (Second Ottawa printing)** Mint single showing an **amazing slip print** variety resulting in prominent doubling and overinking effect throughout the design, somewhat disturbed original gum. A remarkable item ideal for a specialist, VF **Est. 500.00+**



117



120



- 117 ★ 35vi, 1874-1875 1c Deep Orange (Montreal printing), Perf 11½x12 Mint single with rich colour and large part characteristic dull and streaky original gum, Fine+ **250.00+**



118



119



- 118 ★ 35viii, 1896 1c Yellow (Second Ottawa printing), Perf 12 Mint horizontal pair, quite well centered, left-hand stamp with large margins and clearly showing the strongest impression of the "Strand of Hair" (Hurst - Long Strand Type I) plate variety, part OG somewhat disturbed from hinging. A striking and desirable variety, VF **1,200.00+**
- 119 ◎ 35viii, 1896 1c Yellow (Second Ottawa printing), Perf 12 Nicely centered large margined used single showing a very strong impression of the "Strand of Hair" (Hurst - Long Strand Type I), plate variety is clear of flag cancellation, attractive and VF **600.00**
- 120 ◎ 35xi, 1874-1876 1c Orange Yellow (Montreal printing), Perf 11½x12 A well centered single clearly showing the very rare **diagonal line in hair plate variety**, lightly cancelled, tiny tear at top, one of the most elusive Small Queen plate varieties - grossly undercatalogued in our opinion and the first example we recall offering, VF **500.00+**



121



122



123

- 121 ★ 36i, 1890s 2c Green (Second Ottawa printing), Perf 12 Extremely well centered mint single with deep rich colour and full unblemished original gum; a choice stamp, XF NH **300.00+**
- 122 ★ 36i, 1890s 2c Green (Shade) (Second Ottawa printing), Perf 12 A remarkable mint example in a most unusual bright shade, superb centering with impressive large margins all around, full original gum. A great stamp for the shade enthusiast, XF LH GEM **Est. 150.00+**
- 123 ★ 36i + variety, 1890s 2c Green (Second Ottawa printing), Perf 12 A choice well centered mint single with bright fresh colour and showing a prominent **kiss print variety** at bottom, visible in both "2s" and in "CENTS", full original gum, VF NH **300.00+**



124



128

- 124 ★ **36iii, 1890s 2c Green on Yellowish Wove Paper (Second Ottawa printing)** Choice imperforate pair with large margins, brilliant colour, attractive, XF VLH **900.00+**



125



126

- 125 ★ **36v, 1890s 2c Yellowish Green on White Wove Paper (Second Ottawa printing)** Superb margined imperforate pair on distinctive white crisp paper with clear horizontal weave, pristine fresh colour, ungummed as issued, choice XF **900.00+**

- 126 ★ **36v, 1890s 2c Yellowish Green on White Wove Paper (Second Ottawa printing)** Selected imperforate pair on white crisp paper with horizontal weave, large margins, ungummed as issued, XF **900.00+**



- 127 ★ **36vii, 1890s 2c Green (Second Ottawa printing), Perf 12** Corner margin mint single imperforate horizontally between stamp and sheet margin at top, trivial gum creases, OG partially disturbed, nevertheless a rarely seen perforation variety of which only 10 examples exist, this being a UNIQUE positional example, Fine OG **1,250.00**

- 128 ★ **36viii, 1893 (circa.) 2c Green (Second Ottawa printing), Perf 12** Brilliant fresh horizontal pair, right stamp shows late state of the rare **Latent Re-entry** (Position 188) in upper left margin, large part original gum, hinged. A particularly rare plate variety in mint condition, Fine **1,350.00+**



- 129 ★ **37d, 1870 3c Copper Red (First Ottawa printing), Perf 12½** An unused example of this keenly sought-after perforation variety, quite well centered with tall margins often associated with this variety, minute perf tear at left and some short and rounded perforations at right but with superior centering to most of the very few known unused examples, VF; clear 1953 PF cert. **12,000.00**



- 130 ★ **37i, 3c Dark Rose on Thick Soft Wove (First Ottawa printing), Perf 12** An exceptional mint example of this elusive and distinctive paper type, which came into use during late December 1870 and January 1871; characteristic deeper shade on thick fibrous wove paper, remarkably well centered for this rare and sought-after stamp (the other four or five known examples are all poorly centered), showing large part original gum. A fabulous stamp for the connoisseur and in our opinion THE FINEST KNOWN EXAMPLE, Very Fine OG; 2014 Greene Foundation cert. (Unitrade catalogue does not even attempt to price this stamp in VF condition; \$2,500 for fine centering and still undervalued as such) **Est. 3,500.00+**



131



132



- 131 ◎ **37iv, 1880s 3c Orange Red (Montreal printing), Perf 12** An impressive used single showing clear kiss print - portion of a **second impression** of "CENTS 3" and "POSTAGE" tablet both slanting and printed in bottom left of the stamp, sound and showing a large portion of Whitby CDS. A very rare printing variety, ideal for a serious collection, Fine **4,000.00**
- 132 ◎ **37iv, 3c Dull Red (Montreal printing), Perf 12** Used single, centered to bottom right showing a clear **kiss (double) print** - top portion of second impression visible in margin at top, used with Toronto duplex numeral cancel. A very rare printing variety now listed in Unitrade specialized catalogue, Very Good centering; 1997 Greene Foundation cert. (identified as Scott 37c, variety kiss print) *ex. "Mount Royal" (Part II, October 2008; Lot 86)* **4,000.00**



133



134

- 133 ★ **38, 1883-1884 5c Olive Green (Montreal printing), Perf 12** Selected mint single in a lovely pale shade, fresh, well centered and with large part original gum, VF **1,200.00**
- 134 ★ **39b + variety, 1874-1876 6c Yellow Brown (Montreal printing), Perf 11½x12** Mint single showing a **Sharp Re-entry** (Trimble Re-entry No. 5) doubling in lower right corner, large portion dull, streaky original gum, Fine (This plate variety is in a similar category to the listed Unitrade 39iii semi-major re-entry) **500.00+**



135



136



137

- 135 ★ **40, 1884 10c Rose Lilac (Montreal printing), Perf 12** Unusually well centered example, regummed but with lovely colour, VF **1,700.00**
- 136 ★ **40 (shade), 1881 10c Reddish Purple (Montreal printing), Perf 12** Reasonably centered example without gum, vivid colour, F-VF **1,125.00**
- 137 ★ **40c, 1875 10c Dull Rose Lilac (Montreal printing), Perf 11½x12** A quite well centered mint example of this difficult printing, one short perf at left, with large portion of its characteristic dull and streaky original gum, scarce thus, F-VF OG; 1989 Greene Foundation (identified by old Canada Specialized No. 34f) **1,375.00**



138



139

- 138 ★ **40d, 1877 10c Pale Magenta (Montreal printing), Perf 11½x12** An attractive and quite well centered unused example with lovely colour, couple blind perfs; a nice stamp, F-VF **1,375.00**
- 139 ★ **40i, 1888 10c Light Rose Lilac (Montreal printing), Perf 12** Quite well centered mint single with distinctive late Montreal printing shade, full original gum, F-VF VLH **1,125.00**



140



142

- 140 ★ **41ii, 1890s 3c Orange Vermilion (Ottawa printing)** Large margined imperforate mint pair with deep colour and large part original gum, VF **600.00**



- 141 ★ **42a, 1890s 5c Grey (Ottawa printing)** Imperforate pair showing portion of Boggs Type V imprint in left margin, small surface abrasion just touching left stamp, ungummed as issued, VF **900.00**

- 142 ★ **42i, 1890s 5c Brownish Grey (Ottawa printing)** Imperforate pair in the distinctive scarcer shade, large to oversized margins, diagonal crease but otherwise nice and VF appearance **900.00**



143



145

- 143 ★ **43b, 1890s 6c Red Brown (Ottawa printing)** Choice imperforate pair, full to large margins, lovely rich colour, ungummed as issued, VF **750.00**



- 144 ★ **43ii, vi 1890s 6c Chocolate Shade (Ottawa printing)** Imperforate pair of this scarcer shade, surrounded by very large margins and showing the distinctive **Major Re-entry** (Pane A; Position 24) on right stamp, ungummed as issued. A desirable variety for the specialist, VF *ex. Ted Nixon (March 2012; Lot 237)* **Est. 2,500.00+**

- 145 ★ **43 variety, 1890s 6c Red Brown** Horizontal pair without gum, showing a dramatic extra vertical line of perforations, Fine **Est. 250.00+**



146



149



150

- 146 ★ **44, 1897 8c Violet Black (Ottawa printing), Perf 12** A remarkable mint single, very well centered with unusually well-balanced large margins, gorgeous rich colour on fresh paper and full original gum, lightly hinged; a nice stamp, VF+ LH **350.00+**



147



148

- 147 ★ **44d, 1894 8c Blue Grey (Ottawa printing)** Bright fresh imperforate mint pair, nice margins and full original gum, VF **1,000.00**
- 148 ★ **44i, Late 1896 8c Slate Violet (Ottawa printing)** Scarce imperforate pair in sound condition, full margins, fresh colour and sharp impression, ungummed as issued, VF **1,250.00**
- 149 ★ **45, 1897 10c Brown Red (Ottawa printing), Perf 12** A marvelous mint example, precisely centered with amazing large margins, lovely true rich colour associated with the last printing of the Ten cent, possessing full original gum. A superb stamp, XF VLH JUMBO **900.00+**
- 150 ★ **45, 1897 10c Brown Red (Ottawa printing), Perf 12** Choice mint example with rich pastel shade of the last printing, bold impression on fresh paper, nicely centered within large margins and full original gum; a beautiful stamp, VF LH **900.00**

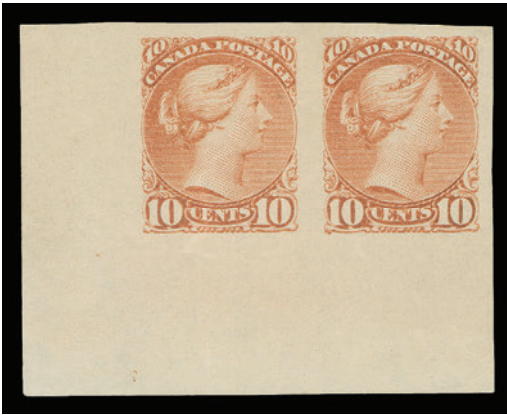


151



152

- 151 ★ **45av, 1891-1894 10c Carmine (Ottawa printing), Perf 12** An attractive and fresh mint single, reasonably centered with large margins, showing the **Pitted Right "0" of "10"** plate variety (Position 21), part original gum, F-VF **875.00**
- 152 ★ **45b (shade), 1895-1896 10c Rose Pink (Ottawa printing), Perf 12** Remarkable mint single with amazing colour and bold impression, well centered with large part OG; a stunning shade, VF **900.00+**



153



158



154



155

- 153 ★ **45c, 1897 10c Brown Red (Ottawa printing)** An appealing corner margin imperforate pair, large margins on other sides, negligible wrinkle on left stamp, full original gum, hinged, VF **750.00+**
- 154 ★ **45i, 1891 10c Rose Carmine (Ottawa printing)** Selected imperforate mint pair with deeper shade, large margins and large part original gum, hinged, attractive, VF **750.00**
- 155 ★ **45i, 1891 10c Rose Carmine (Ottawa printing)** Full margined imperforate pair with lovely bright colour and full original gum; light diagonal gum bend on left stamp, VF LH **750.00**



156



157

- 156 ★ **46a, 1893 20c Brown Orange Widow Weed** A premium example of this imperforate pair with deep rich colour and large margins, small hinge remnant. Scarce this nice and very appealing, XF OG **1,800.00+**
- 157 ★ **47a, 1893 50c Deep Violet Blue Widow Weed** Selected imperforate pair with sheet margin at right, characteristic deep colour associated with this imperforate, overall disturbed OG from adherence but essentially sound and without the usual creases found on most examples, VF **1,800.00**
- 158 ★ **47i, 1893 50c Blue Widow Weed** Well centered mint example showing the **Re-entry** (Position 6), visible doubling of top oval frame and scrolls as well as small guideline beside "C" of "CANADA", a few faint perf tone on gum side only, full original gum relatively lightly hinged, VF **750.00**

DIAMOND JUBILEE



159



160

- 159 ★ **58, 1897 15c Steel Blue** Post office fresh mint single, nicely centered, VF NH; 2014 Greene Foundation cert. **1,200.00**
- 160 ★ **59ii, 1897 20c Vermilion** Selected mint example clearly showing "W-E" variety (Position 15), fresh and nicely centered with wide margins, VF LH **900.00**



161



162

- 161 ★ **62, 1897 \$2 Dark Purple** An appealing mint single with true rich colour on fresh paper, very well centered and possessing full original gum that has never been hinged; seldom encountered in such nice quality, VF NH; 2008 Greene Foundation cert. **6,000.00**
- 162 ★ **64, 1897 \$4 Purple** Selected mint example with excellent colour for this difficult stamp, quite well centered, fresh and with full original gum, moisture spot on gum and very lightly hinged; a nice stamp, VF VLH **2,000.00**

LEAF AND NUMERAL



163



164

- 163 ★ **66a, 1897 1/2c Black on Vertical Wove** Superb imperforate pair with four large margins, fresh with full original gum, XF LH **750.00+**
- 164 ★ **66ii, 1897 1/2c Black on Vertical Wove** Top sheet margin imperforate pair, ungummed as issued, choice, XF **600.00**



- 165 P 66-73, 1897 ½c-10c Queen Victoria Leaf** Complete set of eight plate proofs (plus extra 2c shade); 8c has close margin at right, otherwise with large margins; in issued colours on card mounted india paper, VF **2,000.00**



166



167

- 166 ★ 67a, 1897 1c Blue Green on Vertical Wove** Superb margined imperforate pair, sheet margin at right, deep rich colour, XF OG **600.00+**
- 167 ★ 67i, 1897 1c Bright Blue Green on Vertical Wove** Selected imperforate pair, bright colour on fresh paper, without gum as issued, VF+ **600.00+**



168



169

- 168 ★ 68a, 1897 2c Deep Purple on Vertical Wove** Premium imperforate pair, full even margins, with full original gum that has never been hinged, very scarce thus, XF NH **1,875.00+**
- 169 ★ 68i, 1897 2c Deep Purple on Vertical Wove** Pristine fresh imperforate pair, without gum as issued, XF **600.00**



170



171

- 170 ★ 69a, 1897 3c Carmine on Vertical Wove** Right-hand sheet margin imperforate mint pair, bright colour and with full original gum, relatively lightly hinged, scarce, VF **1,200.00**
- 171 ★ 70, 1897 5c Dark Blue on Bluish Horizontal Wove** Post office fresh mint single with full unblemished original gum; VF NH **750.00**



172



173

- 172 ★ **70a, 1897 5c Slate Blue on Horizontal Wove** Full margined imperforate pair, lovely fresh colour, full original gum with minor adhesion on gum side (trivial), VF LH **750.00**
- 173 ★ **70i, 1897 5c Bright Blue on Horizontal Wove** Imperforate pair with large margins, without gum as issued, VF **600.00**



- 174 ★ **71a, 1897 6c Brown on Vertical Wove** Choice large margined imperforate pair, faint natural gum bend on right stamp mentioned for accuracy, with full original gum, VF NH **2,500.00**



175



176



- 175 ★ **71i, 1897 6c Brown on Vertical Wove** Mint horizontal pair, right-hand stamp clearly showing the sought-after **engraver's slip variety** in lower frameline (Position 14; Left pane), Fine LH **600.00**
- 176 ★ **71ii, 1897 6c Brown on Vertical Wove** Lovely fresh mint single showing the scarce **Misplaced Entry** in lower right frameline, Fine NH **1,000.00**



177



178

- 177 ★ **72a, 1897 8c Deep Orange on Horizontal Wove** Selected imperforate pair, with lovely rich colour and strong impression, characteristic white original gum, attractive and VF LH **900.00**
- 178 ★ **72i, 1897 8c Brownish Orange on Vertical Wove** Imperforate pair, large margins and full original gum, XF LH **600.00+**



179



180

- 179 ★ 73a, 1897 10c Reddish Brown Violet on Horizontal Wove Imperforate mint pair with small to adequate margins, characteristic white original gum, F-VF VLH **750.00**
- 180 ★ 73i, 1897 10c Brown Violet on Vertical Wove Imperforate pair, sheet margin at right, rich colour and large part original gum, hinged, XF **900.00**



181



182

- 181 ★ 74a + variety, 1898 1/2c Black on Vertical Wove Selected fresh imperforate pair, left stamp shows Re-entry (Plate 1, Right pane, Position 13) with doubling in oval under CANADA, full original gum, VF LH **600.00+**
- 182 ★ 74v, 1897 1/2c Black on Vertical Wove Imperforate block of four with full to large margins, ungummed as issued, VF **1,000.00**



- 183 P 74-84, 1897-1902 1/2c-20c Queen Victoria Numeral Complete set of ten plate proof singles (2c purple does not exist) in issued colours on card mounted india paper, most with large margins, VF **4,000.00**



184



186



187



185



189

- 184 ★ **75, 1898 1c Grey Green** Precisely centered mint single with well-balanced margins, sheet margin at top, brilliant fresh colour and full original gum; a premium stamp, XF NH **225.00+**
- 185 ★ **75a, 1898 1c Deep Green on Vertical Wove** A lovely imperforate pair with full margins and fresh deep colour, full original gum, scarce, XF LH **1,500.00**
- 186 ★ **75ii, 1898 1c Blue Green** Choice mint single, very well centered with large margins, gorgeous fresh colour, XF NH **240.00+**
- 187 ★ **75iii, 1898 1c Green** An impressive mint single showing a prominent **Major Re-entry**, very noticeable doubling lower "Is" and its surrounding tablets, very well centered with unusually large margins, rich colour and full original gum, VF NH JUMBO **600.00**



- 188 ★ **76iii, 1898 2c Purple** Nicely centered mint Plate 1 strip of four, second stamp shows the **Major Re-entry** (Position 1L5), some perf separation in selvedge only. A very scarce plate multiple with the plate variety, three stamps including variety NH, VF **1,725.00**
- 189 ★ **77d, 1899 2c Carmine, Die II on Vertical Wove** Choice imperforate pair from the scarcer die, large even margins, ungummed as issued, XF; 1995 Greene Foundation cert. (identified as old number #77iii "Die II") **1,500.00**



- 190 ★ 77ei + variety, 1899 2c Carmine, Die II on Horizontal Wove Spectacular imperforate tete beche horizontal strip of six, originating from the rare booklet sheet, distinctive die and horizontal weave, full sheet margin at both ends, fresh and without gum as issued. A rare multiple, VF; ex. *Vincent Graves Greene Collection (February 1975; Lot 639)* **Est. 5,000.00+**

Interestingly enough, this multiple contains in addition to the key tete-beche pair, two imperforate pairs, all Die II and on horizontal wove paper, currently unlisted in the Unitrade specialized catalogue. The listed scarce die II (#77d) is on a vertical wove paper.



- 191 ★ 77i, 1899 2c Carmine, Die I on Vertical Wove A remarkable imperforate gutter strip of four, ungummed as issued; light crease on second stamp, vertical gutter fold as always and negligible tear in gutter margin only, a rare item, VF appearance **3,000.00**



192



196

- 192 ★ 77iv, 1899 2c Carmine, Die I on Vertical Wove Imperforate pair with fresh colour and ungummed as issued, VF **500.00**



- 193 ★ 78i, 1898 3c Carmine Mint single showing the Major Re-entry with clear doubling in both "3s", lower oval and frameline, scarce, Fine NH **Est. 200.00+**



194



195

- 194 ★ **79, 1899 5c Blue on Lightly Blued Horizontal Wove** Remarkable mint single, very well centered with uncommonly large margins, portion of plate "2" (reversed) number in sheet margin, light hinge mark in selvage only, stamp with pristine original gum, VF NH JUMBO **900.00**
- 195 ★ **79a, 1899 5c Bright Blue on Whiter Horizontal Wove** Sheet margin imperforate pair, light diagonal gum bend of natural occurrence, brilliant fresh colour, VF NH **3,750.00**
- 196 ★ **79ii, 1899 5c Blue on Bluish Horizontal Wove** Choice imperforate pair with sheet margin at right, brilliant fresh colour, ungummed as issued, VF *(Illustrated on Page 46)* **900.00**



197



198

- 197 ★ **80a, 1898 6c Brown on Vertical Wove** Superb margined imperforate mint pair with lovely fresh colour and full original gum, lightly hinged. Seldom seen this nice, XF LH **1,500.00+**
- 198 ★ **81a, 1902 7c Olive Yellow on Vertical Wove** Imperforate pair with lovely rich colour and full margins, ungummed as issued, VF; 1986 Greene Foundation cert. **750.00**



- 199 ★ **82, 1898 8c Orange on Vertical Wove** Choice mint single, gorgeous pastel shade on fresh paper, full original gum, VF NH; 2014 Greene Foundation cert. **1,800.00**



200



201

- 200 ★ **82a, 1898 8c Brown Orange on Vertical Wove** Imperforate mint pair with distinctive shade, full margins and large part original gum, VF **1,500.00**
- 201 ★ **82ii, 1898 8c Orange on Vertical Wove** Selected fresh and full margined imperforate pair, ungummed as issued, VF **900.00**



202



203

- 202 ★ **83a, 1898 10c Deep Brown Violet on Vertical Wove** Full margined imperforate pair, without gum, fresh, VF **1,500.00**
- 203 ★ **83ii, 1898 10c Brown Violet on Horizontal Wove** Upper right corner imperforate pair, large margins on other two sides, ungummed as issued, VF+ **1,250.00**



204



205

- 204 ★ **84, 1900 20c Olive Green** Selected Mint single with sheet margin at top, post office fresh colour, nicely centered with intact perforations and full unblemished original gum; a challenging stamp to find, VF NH; 2009 Greene Foundation cert. **3,000.00**
- 205 ★ **84a, 1900 20c Olive Green on Horizontal Wove** The scarce imperforate pair, ungummed as issued; crease as often found on these, surrounded by large margins, VF appearance (Unitrade \$6,000) **Est. 1,500.00**

1898 IMPERIAL PENNY POSTAGE



- 206 ★ 85a, 1898 2c Map Stamp Imperforate horizontal pair with lavender oceans, brilliant colours, ungummed, VF 700.00



- 207 ★ 86a, 1898 2c Map Stamp Imperforate horizontal pair with blue oceans, full to large margins, fresh, ungummed as issued, VF 700.00



- 208 ★ 86ii, 1898 2c Map Stamp Imperforate pair with deep blue green oceans, sheet margin at left and ungummed as issued, VF 700.00
- 209 ★ 86iii, 1898 2c Map Stamp Lower left single showing the sought-after Major Re-entry (Plate 5; Position 91) with clear doubling in "CANADA" and in lower left "2c" among others, nicely centered, oceans showing slight "Muddy Waters" effect. A very scarce plate variety, VF NH 625.00+



- 210 ★ **86iv, 1898 2c Map Stamp** Imperforate vertical pair with red colour omitted, positional guide dot and small guideline in lower sheet margin, oxidized coloured oceans and vertical crease as usually seen on this missing colour, otherwise VF and scarce **1,500.00**



- 211 ★ **86v, 1898 2c Map Stamp** Imperforate vertical pair with mostly large margins, black (engraving) only, light vertical bend, scarce and VF **1,250.00**

**PORT HOOD, NOVA SCOTIA
BISECTED & HANDSTAMPED PROVISIONALS**



- 212 ★ 88B-88C, 1899 1c & 2c Port Hood Provisionals** An important set of these exceedingly rare provisional bisepts, originating from the famous Dale-Lichtenstein collection and consisting of 1c on one-third of 3c and 2c on two-thirds of 3c carmine Numeral Issue; former with slight trace of the "1" handstamp remaining (fugitive ink), part original gum, hinged; latter with clear "2" handstamp in blue, large part original gum, minor gum thin from previous hinge removal. Both with Stanley Gibbons guarantee backstamps. A formidably rare pair in mint condition, Fine OG **50,000.00**

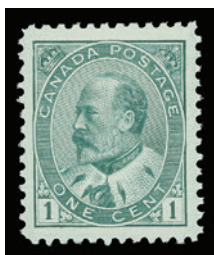
Expertization: 2002 Brandon certificate

Provenance: Dale-Lichtenstein, H.R. Harmer, Inc. Sale 5, May 1969, Lot 825 & Lot 827
"Mount Royal" Collection, Part II, October 2008, Lot 189

MINT EXAMPLES OF THESE PROVISIONALS ARE OF TREMENDOUS RARITY AS MOST OF THE FEW KNOWN EXAMPLES ARE POSTALLY USED ON COVERS. THESE BISECTS WERE PRODUCED DURING A SHORTAGE OF STAMPS AT PORT HOOD, NOVA SCOTIA ON JANUARY 4th AND 5th, 1899.



KING EDWARD VII



213



214



215

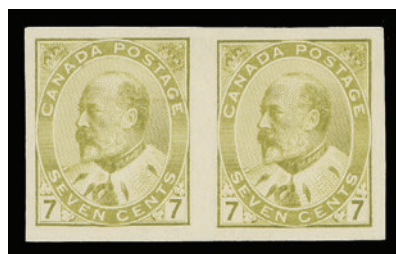
- 213 ★ **89, 1903 1c Green** Extremely well centered mint single, post office fresh colour and pristine original gum; a superb stamp, XF NH **245.00+**
- 214 ★ **89a, 1903 1c Bluish Green on Vertical Wove** Superb imperforate pair with sheet margin at top, large margins on other sides, ungummed as issued, XF **900.00+**
- 215 ★ **90iii, 1903 2c Carmine, Type I on Vertical Wove** Imperforate lower right corner block of four, deep colour, showing characteristic small black marks in margin as shown on all Type I imperforates, ungummed as issued; a very scarce multiple, VF **2,200.00**



- 216 ★ **90iv, 90v, 1903 2c Carmine** Imperforate mint pairs from Plates 31 and 32, each with horizontal black line, also one from Plate 43 with red line and light crease in margin at top, VF NH **1,125.00**



217



218

- 217 ★ **91a, 1903 5c Blue on Bluish Horizontal Wove** Imperforate pair with deep rich colour, negligible tone spot on left stamp, ungummed as issued, VF **1,500.00**

- 218 ★ **92a, 1903 7c Olive Bistre on Vertical Wove** Imperforate pair with full to large margins, bright shade on fresh paper, ungummed as issued, VF **1,000.00**



- 219 ★ **93a, 1903 10c Brown Lilac on Vertical Wove** Imperforate pair with adequate to large margins, amazing rich colour on fresh paper, ungummed as issued, VF **1,500.00**

- 220 ★ **96a-103a, 1908 ½c-20c Québec Tercentenary Issue** Complete set of eight imperforate pairs, all with sheet margin at right, full margins on other sides, bright fresh colours and full original gum; all denominations except one and seven cent pairs have hinge thin on top stamp, VF appearance (Unitrade \$8,000) *(Illustrated on Page 54)* **Est. 2,000.00**



- 221 ★ **100, 1908 7c Olive Green** A precisely centered mint example with well-balanced margins, lovely fresh colour and full original gum; a very nice stamp, XF NH **900.00+**



- 222 ★ **103i, 1908 20c Brown** Selected fresh and reasonably centered mint example showing the elusive **Major Re-entry** (Position 41) with full original gum, very scarce thus, F-VF NH **1,700.00**



Autumn 2014 Auction



The 2¢ Large Queen Laid Paper

As recently reported in the philatelic press, the existence of a third example of the 2¢ Large Queen on Laid Paper was confirmed. The stamp was discovered in a sales circuit book by a collector. He sent the stamp to the Vincent Graves Greene Foundation for a certificate, who after much study and consultation issued a certificate of genuineness in 2013. A full report can be found on the Foundation's website.

This discovery was the first in many decades. The other two examples have certificates dated 1935 from the RPS in London, England. All three singles are faulty to some degree.

We are pleased to have been selected to sell this stamp. It is in our opinion the finest of the three known examples, possessing superior centering and freshness of colour, as well as displaying a dated Hamilton postmark. It will be offered in our October 2014 auction.

Obviously the demand for catalogues will be heavy for this auction and is a great opportunity to consider consigning. Why not get in touch to discuss your holdings?

Telephone: 1(506) 548-8986 or Toll Free 1(800) 667-8267

Highlights



Lot 288



Lot 226



Lot 248



Lot 302



Lot 263



Lot 334

King George V Admiral to Back of Book

Session Two: Lot 223 to Lot 492



Lot 342



Lot 378



Lot 465



The Montclair Collection of Canadian Postage Stamps

Friday May 30th, 2014
Session Two: Lot 223 – 492
Auction begins at 7:00 pm (AST)

KING GEORGE V ADMIRAL



223



226



224



225

- 223 ★ **104b, 1911-1913 1c Blue Green (Wet printing)** Precisely centered mint example with lovely fresh colour and full immaculate original gum; a choice stamp, XF NH **180.00+**
- 224 ★ **104b + variety, 1912 1c Blue Green (Wet printing)** Nicely centered mint block of four, distinctive bright shade and showing prominent **Re-entry** (Plate 7 UR; Position 6) variety on upper left stamp, noticeable doubling of both "1", also of lower horizontal frameline and within ONE CENT, VF OG **Est. 400.00+**
- 225 ★ **104i, 1920 1c Yellow Green (Wet printing)** Fresh mint block of four with full strength Type C lathework, hinged on top pair only leaving lower pair and margin NH. A scarce block, F-VF **1,000.00**
- 226 ◎ **104vii, 1912 1c Blue Green (Wet printing)** An impressive used example of the **Major Re-entry** (Plate 12, LR pane, Position 35), very well centered with rich colour and bold impression, choice and easily among the finest examples known, VF; 2014 Greene Foundation cert. *ex. Abe Charkow (Sept. 1996)* **2,500.00+**



227



228

- 227 ★ **105, 1921 1c Orange Yellow, Die I (Wet printing)** Lower right corner block showing the elusive Type D1 lathework, rich colour, LH on top pair only, F-VF; 2005 Greene Foundation cert. *ex. Harry Lussey (June 1981; Lot 1152)* **750.00+**
- 228 ★ **105, 1920 1c Orange Yellow, Die I (Wet printing)** Fresh, well centered mint block with Type C (80%) lathework, LH in selvedge only, stamps VF NH; *ex. Leonard Beck (June 2008; Lot 4067)* **400.00**



229



230



231

- 229 ★ **105e, 1921 1c Lemon Yellow, Die I (Wet printing)** An appealing mint block in an elusive shade, displaying full Type D inverted lathework, reasonably centered, top left stamp LH, otherwise NH. A desirable item for a serious collection, F-VF **Est. 350.00+**
- 230 ★ **105f, 1924 1c Yellow, Die I (Dry printing)** Choice mint block with Type D (50% strength) lathework. Scarce in such nice quality, VF NH **1,800.00**
- 231 ★ **105f, 1924 1c Yellow, Die I (Dry printing)** Lower right mint block showing guide arrow and full Type D lathework, lovely rich colour, small hinge in left selvedge, stamps NH, Fine+ (Catalogue value is for 80% strength only) **600.00+**



232



233

- 232 ☉ **105f, 1924 1c Yellow, Die I (Dry printing)** Lower right block showing unusually strong Type D lathework, Brantford precancel Style 3, top right stamp shows broken bars variety; striking, Fine NH
Est. 400.00+
- 233 ★ **105iv, 1924-1925 1c Pale Yellow, Die II (Dry printing)** Choice large margined mint single, with brilliant colour and full pristine original gum, VF NH
150.00



234



235

- 234 ★ **106, 1917-1920 2c Carmine (Wet printing)** A nicely centered mint block showing full Type B lathework with prominent **doubling** (8mm wide) at centre, tiny natural inclusion on lower left stamp, LH at top only, bottom pair are NH, VF
1,000.00
- 235 ★ **106, 1917-1920 2c Carmine (Wet printing)** Mint block of six showing Type B lathework with an unusual gap from misalignment of two impressions; left pair with natural gum skip, otherwise with full original gum. A most unusual lathework oddity, Fine+ NH
Est. 250.00+



236



237



238



239

- 236 ★ **106, 1919-1920 2c Carmine (Wet printing)** Superb margined mint single showing “OTTAWA” imprint in top margin, very well centered with pristine original gum, VF+ NH **120.00+**
- 237 ★ **106 shade, 2c Bright Pinkish Carmine (Wet printing)** Mint single in an unusual fluorescent alike shade, very well centered with full original gum, never hinged. A desirable stamp for the shade enthusiast, VF+ NH **Est. 150.00+**
- 238 ★ **106 variety, 2c Carmine (Wet printing)** Well centered mint single showing **Re-entry** in “AN” of “CANADA” and in oval above first “A”. An appealing and prominent plate variety, VF NH **Est. 250.00+**
- 239 ★ **106ii, 1912-1913 2c Rose Red (Wet printing)** Beautiful mint single, very well centered with unusually large margins, radiant colour, a lovely early printing shade, VF+ NH **150.00**



240



241



242

- 240 ★ **106iii, 1920 2c Dark Carmine (Wet printing)** Post office fresh mint block showing full strength Type B lathework, rich colour, VF NH **450.00**
- 241 ★ **106iii, 1920 2c Dark Carmine (Wet printing)** Extremely well centered mint single with deep rich colour and full immaculate original gum; a lovely shade, VF+ NH **120.00+**
- 242 ★ **106vii, 1917-1918 2c Red (Wet printing)** Attractive mint single, fabulous colour on fresh paper, an elusive shade, VF NH **120.00**



- 243 ★ **106x, 1915 2c Deep Rose Red Experimental Coil Stamp** Mint strip of four showing “Postage Stamp Division / No. 1 / May 11” Type A backstamp over paste-up, fresh colour, quite well centered for this, VF LH **500.00**



244



245

- 244 ★ **107, 1921-1924 2c Yellow Green (Wet printing)** Lower right block in a lovely bright shade, showing Type D lathework, well centered, VF NH **675.00**

- 245 ★ **107a, 1924 2c Deep Green on Thin Paper (Wet printing)** Mint block showing Type D inverted lathework, normal strength, overall light gum disturbance, Fine+, scarce **750.00**



- 246 ★ **107a + variety, 1924 2c Deep Green on Thin Paper (Wet printing)** Lower left mint block displaying usual strength Type D lathework and oddly enough a faint **three-line “ghost” pyramid guide** in margin beside lower left stamp; top pair LH, leaving bottom pair NH. The first such block that we have encountered, VF **Est. 1,000.00+**



247



251



254



256

- 247 ★ 107iv, 1923-1927 2c Yellow Green (Dry printing) An impressive mint single, extremely well centered with unusually large margins, brilliant fresh colour and full pristine original gum. A superb stamp in all respects, XF NH GEM 90.00+



- 248 ★ 108, 1919-1920 3c Brown (Wet printing) A remarkable lathework single displaying nearly full strength Type B INVERTED lathework (among the rarest to obtain); small light crease in no way detracts. Very few examples of this lathework have surfaced; one of the most sought-after of the entire issue, Fine OG 1,750.00+



249



250



252

- 249 ★ 108, 1920 3c Brown (Wet printing) Mint block displaying unusually strong Type C lathework, most known examples are of considerable less strength; rich colour, faint gum crease on lower left stamp, Fine NH (Catalogue value is for 40% strength) 1,500.00
- 250 ★ 108, 1920-1922 3c Brown (Wet printing) Mint block with rich colour and unusually strong Type D lathework, F-VF LH (Catalogue value is for 60% strength) 400.00+
- 251 ★ 108, 1918-1922 3c Brown (Wet printing) Precisely centered mint single with lovely rich colour; a choice stamp, XF NH 120.00+



253



255



257

- 252 ★ **108 (shade), 1918-1920 3c Yellowish Brown (Wet printing)** Mint block with full Type B lathework, lovely shade, LH at top, lower pair and selvage NH, F-VF *(Illustrated on Page 63)* **300.00+**
- 253 ★ **108b, 1918-1920 3c Yellow Brown (Wet printing)** Lower left block showing portion of guide arrow and full Type B lathework, small natural gum inclusion. An appealing block in a seldom seen shade, F-VF NH (Catalogue value is for the more common brown shade) **450.00+**
- 254 ★ **108b, 1918 3c Yellow Brown (Wet printing)** Exceptionally well centered example with full immaculate original gum. A scarce shade, XF NH GEM *(Illustrated on Page 63)* **180.00+**
- 255 ★ **108c, 1923 3c Brown (Dry printing)** Lovely fresh mint block with full Type D lathework, lower right stamp has tiny moisture spot on gum, otherwise NH, Fine and scarce **1,500.00**
- 256 ★ **108c (shade), 1923 3c Brown (Dry printing)** Mint single with unusually dark colour for this particular printing, well centered, VF NH *(Illustrated on Page 63)* **120.00**
- 257 ★ **108ii, 1920-1921 3c Dark Brown (Wet printing)** Lower right block showing nearly complete guide arrow plus strong Type D inverted lathework, Fine NH **900.00**



- 258 ★ **109, 1923 3c Carmine, Die I (Dry printing)** Well centered mint Plate A126 inscription block of eight, lovely fresh colour and showing full Type D lathework, left pair hinged, others NH, VF **700.00**



259



261

- 259 ★ 110, 1922 4c Olive Bistre (Wet printing) Gorgeous fresh mint lower right corner block of four, showing full strength Type D inverted lathework. It is reported that only one in twenty displays the full lathework, Fine NH (Catalogue value reflects 40% lathework only) **1,200.00+**



- 260 ★ 110a, 1924 4c Yellow Ochre (Dry printing – Plate 6) Superb margined imperforate pair, deep rich colour on fresh paper, large part original gum with tiny gum thin, VF and much nicer than most we have seen. **3,000.00**

- 261 ★ 110b, 1922 4c Olive Yellow (Wet printing) Mint block in an attractive shade, showing Type D lathework, F-VF NH **900.00**



262



263



264

- 262 ★ 111, 1913-1917 5c Blue (Wet printing) Choice, post office fresh and nicely centered mint single with large margins and full pristine original gum, VF+ NH; 2014 Greene Foundation cert. **900.00**
- 263 ★ 111a, 1912 5c Indigo (Wet printing) A remarkably choice example of this difficult early printing, precisely centered with deep rich colour, intact perforations and full unblemished original gum. A very scarce stamp especially in such premium quality, XF NH; 2014 Greene Foundation cert. **2,000.00+**
- 264 ★ 111, 1917 5c Blue (Wet printing) Selected fresh mint example of this challenging shade, large margins, brilliant fresh colour and full original gum that has been never hinged. A beautiful stamp, VF NH **900.00**



265



266



268

- 265 ★ 112, 1924 5c Violet on Medium Wove Paper (Wet printing) Post office fresh mint block showing full Type D inverted lathework, scarce thus, Fine+ NH **1,800.00**
- 266 ★ 112, 1921-1924 5c Violet (Wet printing) Choice centered mint block with rich colour and showing noticeably stronger than usual Type D lathework. An attractive lathework multiple in superior condition, VF NH **1,050.00**



267



269



271

- 267 ★ 112, 1922-1925 5c Violet (Wet printing) Superb centered mint example, lovely fresh colour, XF NH **180.00+**
- 268 ★ 112a, 1924 5c Violet on Thin Paper (Wet printing) Nicely centered mint block, lovely colour and showing normal strength Type D inverted lathework, top pair LH leaving bottom pair and margin NH, VF **1,000.00**
- 269 ★ 112a, 1922 5c Violet on Thin Paper (Wet printing) Very well centered mint single with deep colour and full immaculate original gum; a choice stamp, VF+ NH **150.00**



- 270 ★ 112b, 1925 5c Violet (Dry printing; Redrawn Vertical Framelines) A remarkably choice imperforate pair with full to large margins, exceptionally fresh on pristine paper, full original gum, relatively lightly hinged. Rarely seen in such nice quality, XF **3,000.00+**
- 271 ★ 112c, 1925 5c Violet (Dry printing; Redrawn Vertical Framelines) Premium mint single, extremely well centered within four well-balanced large margins, gorgeous fresh colour and with full unblemished original gum; superb in all respects, XF NH GEM **210.00+**



272



274



275



273



276

- 272 ★ **113, 1915-1918 7c Yellow Ochre (Wet printing)** Bright fresh mint single, very well centered within large margins and full original gum; a nice stamp, VF+ NH **240.00**
- 273 ★ **113a, 1918 7c Olive Bistre (Wet printing)** Mint block in a lovely bright shade, full Type B lathework, attractive, F-VF NH **1,000.00**
- 274 ★ **113a (shade), 1915-1918 7c Deep Olive Bistre (Wet printing)** Appealing mint single with amazing colour in a most unusual shade. A great stamp for the Admiral shades specialist, VF NH **Est. 300.00+**
- 275 ★ **113 (shade), 7c Dark Greenish Bistre (Wet printing)** An elusive and very distinct shade, full original gum, F-VF NH **Est. 300.00+**
- 276 ★ **113iii, 1918 7c Yellow Ochre (Wet printing)** Lower left block with fabulous colour, shows **retouched vertical line** in upper right spandrel on upper left stamp, full Type B lathework. A scarce and appealing lathework multiple, Fine NH (Catalogue value reflects lower strength) **1,800.00**
- 277 ★ **114, 1925-1926 7c Red Brown (Dry printing)** Mint block showing rarely seen full Type D lathework (only one in twenty is reported with full lathework); top pair with light gum thins and perf soak, bottom pair and sheet margin are sound and never hinged, F-VF (Catalogue value for bottom pair only) *(Illustrated on Page 68)* **500.00**



- 278 ★ **114a, 1926 7c Red Brown (Dry printing – Plate 7)** Fabulous imperforate pair in an excellent state of preservation – completely sound, large margins all around and lovely fresh colour. A scarce and desirable imperforate in choice condition, XF OG; Right-hand stamp shows the diagonal line in “V” of “SEVEN” plate variety. **3,000.00+**



277



279



280



281

- 279 ★ 114b, 1924 7c Red Brown (Wet printing) Lovely, fresh and well centered mint block with Type D lathework, VF NH **600.00**
- 280 ★ 114bv, 1924-1925 7c Red Brown (Wet printing – Plate 8) Choice mint single with deep rich colour, showing the diagonal line in “N” of “CENTS” plate variety, VF NH **375.00**
- 281 ★ 114iv, 1926 7c Red Brown (Dry printing – Plate 7) Exceptionally well centered and fresh mint example showing the diagonal line in “V” of “SEVEN” plate variety, XF NH **375.00+**



- 282 ★ 116, 1920 10c Plum (Wet printing) Quite well centered mint block in a nice bright shade and showing normal strength Type C (80%) lathework, top pair VLH, lower pair and margin NH, Fine to Very Fine (Catalogue value is for lower pair) **5,000.00**



283



284

- 283 ★ 116, 1917 10c Plum (Wet printing) Mint block with Type A (80%) lathework, clear doubling (10mm wide) below left stamp, top pair LH, otherwise NH. A very scarce lathework variety, Fine (Catalogue value for normal lathework pair only) ex. *Harry Lussey (June 1981; Lot 1211)* 3,000.00+
- 284 ★ 116, 1917 10c Plum (Wet printing) Mint block of four showing full strength Type A lathework, full original gum, hinged, a Fine and scarce block. 2,400.00



285



286



287

- 285 ★ 117, 1921-1924 10c Blue (Wet printing) An impressive lower left block showing rare full strength Type D lathework, left pair with vertical natural gum skip, lower right stamp is NH. An elusive strong impression of the lathework on this value, Fine+ OG 2,000.00
- 286 ★ 117a, 1924 10c Blue (Dry printing) Nicely centered mint block of four with characteristic impression of the Type D lathework (40% strength), full original gum, VF NH 1,500.00
- 287 ★ 117ii, 1921-1924 10c Light Blue (Wet printing) Gorgeous fresh and nicely centered mint block of four with normal strength impression of Type D (40%) lathework, LH at top, otherwise NH, VF ex. *Harry Lussey (June 1981; Lot 1216)* 1,500.00



**TEN CENT BISTRE BROWN ADMIRAL LATHEWORK
ONE OF THE KEY PIECES OF THE ENTIRE DEFINITIVE ISSUE**



- 288 ★ 118, 1924 10c Bistre Brown (Dry printing)** An exceptional mint block of four showing a strong impression of the Type D lathework, lovely bright shade, LH on top pair only leaving lower stamps and margin never hinged. An important lathework multiple, F-VF; 2007 Greene Foundation cert.
ex. Michael Roberts (2006) **10,000.00+**

From a recent census (Admiral’s Log newsletter 2006, updated 2008) a total of only eight mint blocks of four have been reported, this example offered here ranks **AMONG THE FINEST**.



- 289 ★ 118a, 1927-1928 10c Bistre Brown (Dry printing – Plate 25)** Imperforate pair with large margins, light gum toning mentioned for the record, VF LH and scarce **3,000.00**



290



291

- 290 ★ 119, 1924 20c Olive Green (Dry printing) Post office fresh mint block showing Type D lathework, well centered, NH and almost Very Fine **2,500.00**
- 291 ★ 119c, 1924 20c Olive Green (Wet printing) A precisely centered mint block with Type D lathework, lovely fresh colour, left pair with natural vertical gum skip, otherwise full original gum and relatively lightly hinged. A nice multiple, VF+ OG; ex. *George Marler (September 1986; Lot 518)* **2,000.00**



292



295



296

- 292 ★ 119, 1924-1925 20c Olive Green (Dry printing) Lovely fresh and centered mint single, with bright colour, sharp impression and pristine original gum, VF NH **450.00**



- 293 ★ 119a, 1925 20c Olive Green (Dry printing – Plate 9) Full margined imperforate pair, post office fresh and showing the retouched vertical frameline in upper right spandrel; minor gum thin from hinge removal, VF OG **3,000.00**
- 294 ★ 119c, 1917 20c Dark Olive Green (Wet printing) Lower right block with deep rich colour, showing full Type A lathework, “935F” printing order number shows beneath lathework on right stamp, lower right stamp NH. An attractive lathework for the specialist, Fine LH (Illustrated on Page 72) **900.00+**
- 295 ★ 119c, 1912-1917 20c Olive Green (Wet printing) Selected mint single, well centered within uncharacteristically large margins, a beautiful stamp, VF+ NH **600.00+**
- 296 ★ 119c, 1912-1917 20c Dark Olive Green (Wet printing) Post office fresh mint single with rich colour, nicely centered and with full unblemished original gum, VF NH **600.00**



294



297



298



299



300

- 297 ★ 119c + variety, 1917 20c Dark Olive Green (Wet printing) Selected fresh and well centered mint block with full Type A lathework, clear **double** impression (15mm wide) below left stamp, lower pair is NH. A striking and very scarce variety that is unlisted in Unitrade, VF OG **Est. 1,500.00+**
- 298 ★ 119iv, 1925 20c Olive Green (Dry printing) Fresh and nicely centered mint single showing the distinctive retouched vertical frameline in upper right spandrel, VF NH **450.00**
- 299 ★ 120, 1925 50c Black Brown (Re-engraved; Dry printing – Plate 4) Selected mint example, well centered, brilliant fresh colour and full original gum, VF NH **360.00**
- 300 ★ 120a, 1912 50c Black (Wet printing) A nicely centered mint example of this challenging first printing, characteristic sharp impression and deep colour, couple irregular perfs at right as often seen, full unblemished original gum, NH and nearly Very Fine **1,080.00**



- 301 ★ 120b, 1925 50c Black Brown (Re-engraved; Dry printing – Plate 4) Imperforate pair with lovely fresh colour, diagonal gum crease on right stamp, large part original gum, F-VF and scarce **3,250.00**

**A MOST APPEALING CORNER MARGIN EXAMPLE
OF THE RARE FIFTY CENT LATHEWORK**



- 302 ★ 120ii, 1923 50c Brown Black (Wet printing – Plate 3)** Spectacular lower left mint block of four displaying an unusually strong and large portion the rare Type D lathework – among the strongest attainable on this denomination, quite well centered, deep colour, light hinge mark at top centre, leaving the key bottom pair and lathework margin with full original gum, NEVER HINGED. An outstanding and important lathework multiple which has graced the most comprehensive Admiral collection of the past, F-VF LH / NH (Catalogue value is for bottom pair) **24,000.00**

Expertization: 1992 Greene Foundation certificate

Provenance: George Marler, September 1982, Lot 533

After thorough research for comparable examples we were only able to find two mint singles with full lathework; one of which sold in January 2010 (ex. "Crossings" realized \$13,225), one quite well centered mint block (ex. Robert Bayes, *Private Treaty*, 1997) and a badly off-center mint block of four with perforations cutting design at top.

THIS LATHEWORK BLOCK IS ARGUABLY THE FINEST KNOWN WHEN COMBINING CENTERING AND CONDITION WITH THE ACTUAL STRENGTH OF THE LATHEWORK IMPRESSION. AN ABSOLUTE ADMIRAL SHOWPIECE.



303



304



307



308



310



312



313

- 303 ★ **122, 1925 \$1 Orange (Dry printing)** Well centered mint block showing full Type D lathework, lovely fresh colour, lightly hinged at top, bottom pair NH, VF *(Illustrated on Page 74)* **1,500.00**
- 304 ★ **122, 1925 \$1 Orange (Dry printing)** Mint block of four in a deeper shade of orange than usually seen, showing full Type D lathework, top pair VLH, lower pair NH, Fine *(Illustrated on Page 74)* **750.00+**



305



306

- 305 ★ **122a, 1925 \$1 Orange (Dry printing)** Selected fresh imperforate pair with sheet margin at left, faint gum wrinkle on left stamp, negligible for this, large part original gum, VF and scarce **3,000.00**
- 306 ★ **122b, 1923 \$1 Deep Orange (Wet printing)** A reasonably well centered mint example of this difficult stamp, characteristic deep shade, F-VF NH **1,000.00**
- 307 ★ **126c, 1924 1c Yellow, Die I (Wet printing), Perf 8 Vertically Part Perforate Coils (Sheet Format)** An exceptionally well centered mint block of four, gorgeous rich colour and showing full Type B lathework, intact perforations and full original gum, lightly hinged. A challenging multiple to find in such superior quality, XF LH *(Illustrated on Page 74)* **3,000.00**
- 308 ★ **128ai, 1924 2c Green (Wet printing), Perf 8 Vertically Part Perforate Coils (Sheet Format)** Mint block with characteristic deep colour and typical strength (20%) Type D lathework, intact perforations and full original gum, Fine NH, scarce *(Illustrated on Page 74)* **2,500.00**



309



311

- 309 ★ **129, 1918 3c Brown (Wet printing), Perf 8 Vertically** A well centered coil pair, VF NH **250.00**
- 310 ★ **130a, 1924 3c Carmine, Die I (Wet printing), Perf 8 Vertically Part Perforate Coils (Sheet Format)** Mint block with typical strength Type D lathework, margin trimmed, intact perforations and full original gum, attractive and Fine LH *(Illustrated on Page 74)* **1,500.00**
- 311 ★ **135a, 1917 3c Brown Fathers of Confederation** Imperforate pair, sheet margin at left, ungummed as issued, VF **800.00**
- 312 ★ **136, 1924 1c Yellow, Die I (Wet printing), Imperforate** Choice imperforate block of four with Type D inverted lathework, usual strength, deep colour and full original gum; scarce this nice, VF NH *(Illustrated on Page 74)* **1,500.00**
- 313 ★ **136, 1924 1c Yellow, Die I (Wet printing), Imperforate** Mint block showing characteristic impression of Type B lathework, natural diagonal gum bend, VF LH *(Illustrated on Page 74)* **1,500.00**



314



315



316

- 314 ★ 139a, 1926 2c on 3c Carmine, Die I (Dry printing) One-Line Provisional Surcharge Mint pair with and without surcharge, very scarce and in our opinion undercatalogued, F-VF OG; 1999 Greene Foundation cert. **400.00+**
- 315 ★ 139b, 1926 2c on 3c Carmine, Die I (Dry printing) One-Line Provisional Surcharge Fresh mint single with double surcharge variety, seldom seen, F-VF LH **250.00**
- 316 ★ 139c, 1926 2c on 3c Carmine, Die II (Dry printing) One-Line Provisional Surcharge Reasonably centered mint example of this difficult stamp, lovely bright colour and large part original gum. A key stamp of the Admiral issue, F-VF **750.00**



317



318



319



320



321

- 317 ★ 139i, 1926 2c on 3c Carmine, Die I (Dry printing), One-Line Provisional Surcharge Nicely centered mint block with full Type D lathework, the shifted (slanting) surcharge variety, small stain at bottom right and marginal pinhole, lower pair is NH. A remarkable and quite rare lathework multiple, VF LH; 1993 Greene Foundation cert. *ex. Harry Lussey (June 1981; Lot 1299)* **5,000.00**
- 318 ★ 140a, 1926 2c on 3c Carmine, Die I (Dry printing) Two-Line Provisional Surcharge Fresh mint single, natural straight edge at right, showing double surcharge variety, scarce, VF OG **300.00**
- 319 ★ 140b, 1926 2c on 3c Carmine, Die I (Dry printing) Two-Line Provisional Surcharge Very well centered, the striking triple surcharge variety, VF NH; 1981 BPA cert. **525.00+**
- 320 ★ 140b, 1926 2c on 3c Carmine, Die I (Dry printing) Two-Line Provisional Surcharge Mint single showing a dramatic triple surcharge variety, neatly positioned, some light toning, well centered and lightly hinged, VF **300.00**
- 321 ★ 140c, 1926 2c on 3c Carmine, Die I (Dry printing) Two-Line Provisional Surcharge Lovely mint single, double surcharge one of which is inverted; an elusive and under-rated surcharge variety, VF NH; 1991 Greene Foundation cert. for a vertical pair from which it originates, this being top stamp. **785.00+**

LATE KING GEORGE V ERA



- 322 ★ 141a-145a, 1927 1c-12c 60th Anniversary of Confederation Full margined mint set of five imperforate horizontal pairs, VF OG **800.00**



- 323 ★ 141b-145b, 1927 1c-12c 60th Anniversary of Confederation Fresh and nicely centered set of five horizontal pairs imperforate vertically; 2c has natural straight edge at top, VF NH **1,200.00**



- 324 ★ 141c-145c, 1927 1c-12c 60th Anniversary of Confederation Issue Fresh, well centered set of five vertical pairs imperforate horizontally, VF-XF NH **1,200.00**



- 325 ★ 143i, 1927 3c Brown Carmine Parliament Mint single imperforate vertically between stamp and sheet margin at right, fresh with full original gum. Rarely seen, Fine LH **2,400.00+**



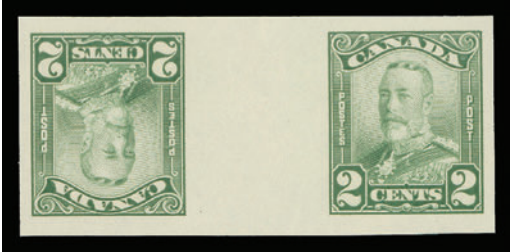
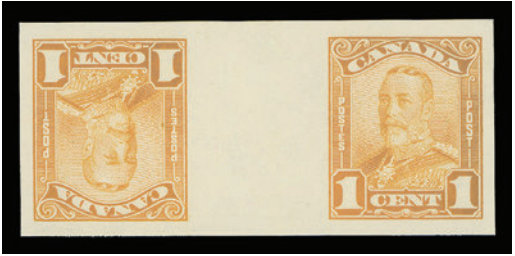
- 326 ★ 146b-148b, 1927 5c, 12c & 20c Historical Issue Fresh and centered set of three horizontal pairs, imperforate vertically; 5c has natural straight edge at foot, VF NH **720.00**



- 327 ★ 146c-148c, 1927 5c, 12c & 20c Historical Issue Choice well centered and fresh mint set of three vertical pair, imperforate horizontally, VF NH **720.00**



- 328 ★ 149b-159a, 1928-1929 1c-\$1 King George V Scroll An attractive complete set of eleven imperforate pairs, large margins; 1c, 2c, 4c, 5c, 8c and 20c NH, others have light trace of hinging. A beautiful set, VF **3,935.00**



— 329 —

— 330 —

- 329 ★ 149evi-153evi, 1929 1c, 2c & 5c King George V Scroll Mint set of three imperforate horizontal tete beche pairs with narrow vertical (4.5mm) gutter; minute wrinkle on 2c, fresh with full margins, VF NH 1,685.00

- 330 ★ 149cvii-153cvii, 1929 1c, 2c & 5c King George V Scroll Mint set of imperforate horizontal tete-beche pairs with wide (17mm) vertical gutter, each with large margins, VF LH 1,500.00



- 331 ★ 149d-159b, 1928-1929 1c-\$1 King George V Scroll Complete set of eleven horizontal pairs imperforate vertically, bright colours; 2c, 4c, 5c, 8c and 12c NH, VF LH 3,975.00



- 332 ★ **149e-159c, 1928-1929 1c-\$1 King George V Scroll Issue** A fabulous mint set of eleven vertical pairs imperforate horizontally, well centered, fresh colours and with pristine original gum; seldom encountered set in such nice condition, VF NH **5,325.00**



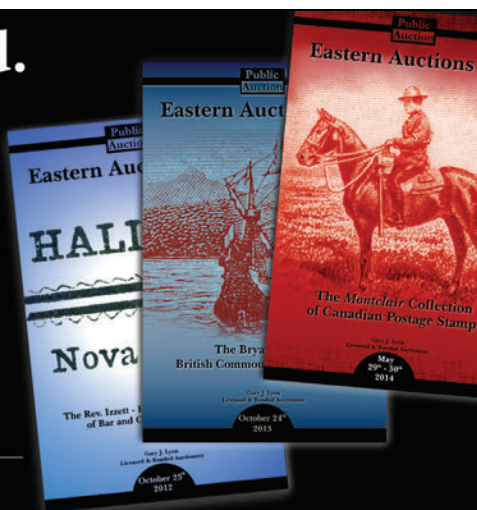
- 333 ★ **158iii, 1929 50c Bluenose** Mint example of the sought-after "Man on the Mast" (Position 58) plate variety, typical centering for this, overall lightly disturbed original gum, F-VF **2,000.00**

Eastern Auctions Ltd.

Would like to showcase your collection.

Since 1980 we have steadily built a reputation for outstanding realizations. Numerous record prices have been achieved for superior quality stamps and specialized collections. Take advantage of our friendly and professional service. Your collection will be described by our expert lotterers and lavishly illustrated in our deluxe catalogue. Commission rates are very competitive and prompt payment is always guaranteed.

Contact us today for further details.



Canada's most trusted auction house



P.O. Box 250 - Bathurst - New Brunswick - E2A 3Z2 - Canada
Telephone 1(800) 667-8267 - Fax 1(888) 867-8267
email easternauctions@nb.aibn.com
website www.easternauctions.com

**THE FAMOUS "MAN ON THE MAST" VARIETY
IN A POSSIBLY UNIQUE IMPERFORATE PAIR**



- 334 ★ 158iv, 1929 50c Bluenose Exceptional imperforate pair showing the elusive "Man on the Mast" plate variety (Position 58) at right, large margins, pristine colour and sharp impression on fresh paper, possessing full unblemished original gum, never hinged. An exceedingly rare plate variety, XF NH showpiece; 2000 Greene Foundation cert. **Est. 15,000.00+**





335



336



338

- 335 ★ 159a, 1929 \$1 Olive Green Large margined imperforate mint pair with full original gum, VF NH
1,350.00
- 336 ★ 163d, 1930 1c Deep Green, Die II Scarce imperforate pair, large part original gum, hinged. Only 50 pairs were printed, VF
2,000.00



- 337 ★ 174a-177a, 1930 12c, 20c, 50c & \$1 King George Arch Set of four imperforate pairs, without gum; each with rich colour and large margins, VF (Unitrade \$5,000)
Est. 1,500.00
- 338 ★ 190a, 1931 10c Dark Green George Etienne Cartier Fresh imperforate mint pair with full original gum; owner's backstamps, VF NH
1,300.00



- 339 ★ 195c-201a, 1932 1c-8c King George V Medallion Premium mint set of six imperforate pairs, immaculate original gum which is seldom encountered on this issue, VF-XF NH 4,200.00



- 340 ★ 199a, 1932 5c Dark Blue Medallion Mint corner margin horizontal pair imperforate vertically, well centered, faint trace of hinging on left stamp. A scarce and appealing variety, VF VLH 2,000.00+



- 341 ★ 203i, 1933 20c Grain Exhibition Overprint Selected fresh imperforate vertical pair with sheet margin at foot, VF OG 800.00



**GRAIN EXHIBITION “BROKEN X” VARIETY
SUPERB MINT NEVER HINGED IMPERFORATE BLOCK**



342 ★ 203ii, 1933 20c Grain Exhibition Overprint Spectacular imperforate block of four showing the constant Broken "X" variety (Position 19) at upper right - very rare and without question the most desirable and finest of the three known examples, fresh and with full pristine original gum, never hinged. The rarest of all listed varieties of late King George V era; a superb showpiece, XF NH
Est. 10,000.00+

Expertisation: 2004 Greene Foundation certificate.

Provenance: “Midland” Collection of Canada, Firby, January 2004; Lot 317

It has been reported that only three imperforate “Broken X” variety exist; two pairs (one pair NH; other is hinged) and one block of four are known. The latter offered here has pristine original gum and NEVER HINGED.





343



345

- 343 ★ 208a, 1934 3c Jacques Cartier Large margined imperforate mint pair with bright colour and full original gum, VF NH 1,600.00



- 344 ★ 208i, 1934 3c Jacques Cartier Mint upper right Plate 2 strip of twenty showing the "burr on shoulder" variety, folded between eighth and ninth columns, VF NH (Catalogue value for variety in block of four only) 400.00+

- 345 ★ 208ii, 1934 3c Jacques Cartier Mint single showing the "Scarface" (Plate 2 Right pane, Position 97) prominent plate variety, F-VF NH 205.00



- 346 ★ 208iii, 1934 3c Jacques Cartier Unusually well centered lower right mint Plate 1 strip of twenty; folded between second and third column, showing "hairline from hand" plate variety (Plate 1 Right Pane, Position 89). A scarce positional plate strip in such nice quality, VF+ NH 540.00



- 347 ★ 209a, 1934 10c Olive Green Loyalists Exceptionally fresh and full margined imperforate mint pair with full pristine original gum, never hinged, scarce thus - only a total of 50 pairs were printed, XF NH **3,500.00+**



348



349

- 348 ★ 210a, 1934 2c New Brunswick Seal Fresh mint imperforate pair with full original gum, VF LH **850.00**

- 349 ★ 210aii, 1934 2c New Brunswick Seal Choice right margin imperforate pair showing "closed frameline" variety on right stamp. A scarce item as only 35 pairs can exist, XF LH **1,750.00**



- 350 ★ 211a-216b, 1935 1c-13c Silver Jubilee Issue Complete set of six corner margin horizontal imperforate pairs; 1c without gum; 2c has corner crease in sheet margin, otherwise VF NH **3,400.00**



- 351 ★ 217c-227a, 1935 1c-\$1 King George V Pictorial Issue Complete set of eleven imperforate pairs; 1c to 8c horizontal; 10c to \$1 are vertical. All fresh with full margins and very lightly hinged; a nice set, VF **2,800.00**



- 352 ★ 223ii, 1935 10c Carmine Rose RCMP A desirable lower margin block showing the elusive "Broken Leg" variety at lower right, centered a bit left as are most examples, fresh with full original gum, never hinged. A rare and popular variety, almost Very Fine; 2014 Greene Foundation cert. **4,185.00**



- 353 ★ 223iii, 1935 10c Carmine Rose RCMP Imperforate gutter margin block of four, vertical fold in gutter as do all existing blocks, guide arrow at bottom centre. An impressive multiple of this popular stamp, VF NH; ex. Senator Henry D. Hicks (1991; Lot 868) **Est. 2,500.00**



354 ★ 223iv, 1935 10c Carmine Rose RCMP A reasonably centered mint single showing the "Bird Cage" variety (Plate 1 UL; Position 48), scarce, F-VF VLH **335.00**

KING GEORGE VI



355 ★ 231c-236a, 1937 1c-8c King George VI Mufti Selected set of six imperforate pairs, bright fresh colours and full original gum; a beautiful set, VF NH **3,600.00**



356 ★ 237a, 1937 3c King George VI Coronation A premium imperforate pair, surrounded by unusually large margins, gorgeous fresh colour and pristine original gum, XF NH **1,200.00+**



- 357 ★ 241b-245b, 241c, 1938 10c-\$1 Pictorial Issue Fresh set of six sheet marginal imperforate pairs, vertical format except for the 10c pairs. An attractive set, VF VLH **4,750.00**



- 358 ★ 245a, 1938 \$1 Aniline Violet Chateau de Ramesay A remarkable mint vertical pair imperforate horizontally, precise centering, lovely fresh colour and full original gum, mild hinging on top stamp. One the key and rarest items in all of the King George VI era, XF LH **6,000.00**

The unique find of one sheet was divided into a plate block of six, six vertical strips of three and 13 pairs.



- 359 ★ 246a-248a, 1939 1c, 2c & 3c Royal Visit Selected fresh mint set of three horizontal imperforate pairs, VF OG **2,100.00**



- 360 ★ 249d-262a, 1942-1943 1c-\$1 King George VI War Issue A fabulous complete mint set of fourteen mint imperforate pairs; horizontal for the 1c to 8c and vertical for the 10c to \$1. All with large margins and brilliant fresh colours. Only the 10c and 13c LH leaving the other twelve pairs NH. A very scarce set, condition is superior to most that exist, VF-XF **9,900.00**

**ELIZABETHAN
MODERN ERRORS & VARIETIES**



- 361 ★ 339a, 1954 3c Carmine Rose Wilding Issue** Fresh mint horizontal pair imperforate vertically, characteristic centering from the unique sheet (50 pairs exist). An attractive and sought-after early Elizabethan error, F-VF NH **2,000.00**



- 362 ★ 341v, 1954 5c Blue Wilding Issue** The remarkable lower left Plate 11 block of four, imperforate vertically between sheet margin and left pair, hinged at top and in lower sheet margin leaving bottom pair NH. A very rare perforation error - this being the UNIQUE plate block. In addition, its centering and condition are superior to any of the eight known singles. A fabulous showpiece of the 1954 Wilding Definitive issue, VF **6,000.00**



- 363 ★ 343i, 1954 15c Grey Gannet** Lower right block of four imperforate vertically between sheet margin and right pair, fresh with full original gum, tiny gum thin spot at upper right mentioned for the record; a very rare perforation error - only five blocks of four exist, this being a unique position, F-VF NH **3,000.00**



- 364 ★ 387a, 1959 5c St. Lawrence Seaway** An attractive mint example, the famous INVERTED SEAWAY error, reasonably well centered with bright colours on fresh paper, full undisturbed original gum, never hinged and seldom seen as such, superior to most other examples, F-VF NH; 1999 Greene Foundation cert. **12,500.00**



- 365 ★ 387i, 1959 5c St. Lawrence Seaway** Mint single showing quite clear second impression (kiss print) of the red "CANADA", very scarce, F-VF NH **2,500.00**



366



367



368



369

- 366 ★ 468Ac, 1969 6c Orange on Dull Fluorescent Paper, DEX Gum** Pristine imperforate mint pair, VF NH **400.00**
- 367 ★ 549a, 1971 7c Emerald Green on Hibrite Paper, DEX Gum** Fresh imperforate mint pair with full original gum, scarce, F-VF NH **1,500.00**
- 368 ★ 550a, 1971 8c Slate on Fluorescent Paper, PVA Gum** Selected fresh imperforate mint pair, F-VF NH **750.00**
- 369 ★ 607ii, 1972 8c Christmas Candles** Mint vertical pair, top stamp pale blue from repellex error. According to K. Bileski (notes included) only twenty such pairs exist, VF NH **500.00**



370



372

- 370 ★ 677aiii, 1975 6c Christmas Mint se-tenant pair showing a distinctive triple print of black inscriptions, scarce, VF NH **400.00**



371



373

- 371 ★ 693d, 1976 8c Royal Military College Centenary Mint se-tenant pair showing the dramatic double impression error; very scarce and highly desirable, VF NH; 2000 Greene Foundation cert. **5,000.00**
- 372 ★ 716c, 1978 14c White Queen Pristine mint single with red background colour completely omitted and untagged; a desirable and striking modern error, VF NH **2,000.00**
- 373 ★ 878 variety, 1981 17c Antique Mandora Imperforate pair from lower right corner, with brown colour and most of magenta missing; typical minute gum wrinkles normally seen on these, otherwise VF (Unitrade \$1,500) **Est. 750.00**



374



375

- 374 ★ 922a, 1982 20c Ice Skates Mint single with brown colour omitted, normal stamp for comparison; only one sheet was found, VF NH **500.00**
- 375 ★ 924c, 1983 32c "Maple Leaf in Winter" Selected mint single with beige (background) colour completely omitted and untagged; a striking modern error, VF NH **1,500.00**



376



377

- 376 ★ 1171c, 1989 44c Walrus (Slater Paper), Perf 13.8x13.1 Pristine mint single showing the sought-after perforation change and sheet margin at left, VF NH **600.00**
- 377 ★ 1171c, 1989 44c Walrus (Slater Paper), Perf 13.8x13.1 Choice mint single of this elusive perforation change, VF NH **600.00**

THE RARE INVERTED INSCRIPTIONS



- 378 ★ 1181a, 1989 \$1 Runnymede Library (BABN printing), Perf 13.3 Spectacular sheet margin mint single showing the INVERTED ENGRAVED INSCRIPTIONS ERROR, this example being Position 15 in the UNIQUE pane of 25 stamps; very rarely seen and easily among the great rarities of modern Canadian philately, VF NH; 2000 Greene Foundation cert. **17,500.00**

The unique pane showed inverted inscriptions shifted 10mm to right on **twenty** examples like the one offered here; the remaining five copies show just an inverted denomination positioned at lower right, originating from the first column of the pane. As these five are always offered in a pair along with a normal invert, a mere 15 singles are available to collectors.

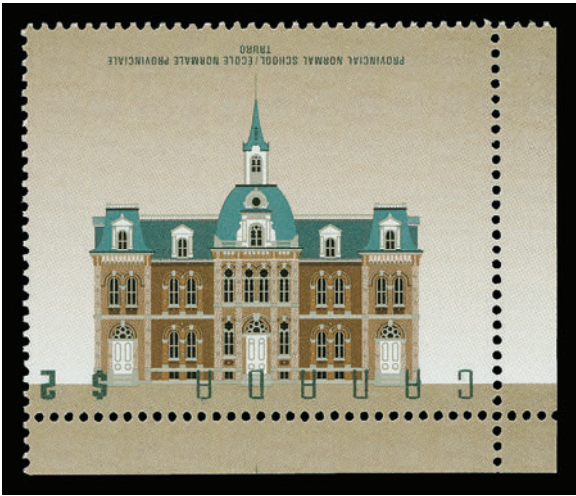


379



380

- 379 ★ 1356i, 1991 42c Flag over Hills Pristine fresh and large margined imperforate mint pair with sheet margin at right, XF NH **1,000.00**
- 380 ★ 1359i, 1992 43c Flag over Field Full margined imperforate mint pair, VF NH **1,000.00**

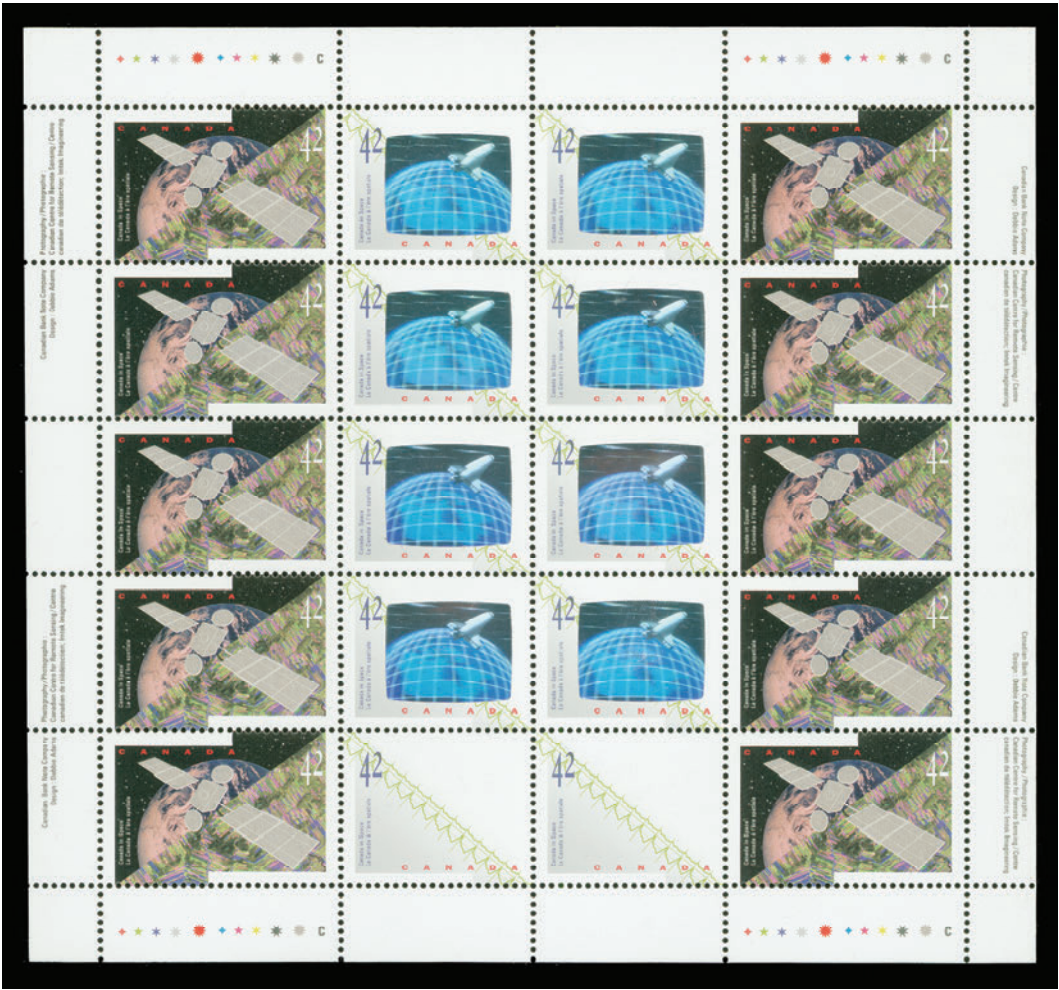


- 381 ★ 1376b, 1995 \$2 Provincial Normal School (Canadian Bank Note printing), Perf 13½x13 Mint single showing the INVERTED ENGRAVED INSCRIPTIONS ERROR, corner position in pristine condition and never hinged. A rare and desirable modern Canadian error, VF NH **12,000.00**

Four sheets were discovered with inverted inscriptions, with only seventy stamps showing the error on fully printed stamps. The remaining thirty are mostly without stamp design or show cutting guides and colours bars and are normally offered in se-tenant vertical pairs or strips of three. Less than fifty examples of the fully printed stamps are still available, making it considerably rarer than the famous Seaway invert.



- 382 ★ 1441a, 1992 42c Canada in Space Lower right plate block of four, the "ANIK E2" satellite stamps with the rare missing silver colour error; an under-appreciated modern rarity, VF NH; colour photocopy of 2008 Greene Foundation certificate for a complete pane of sixteen, from which this positional block originates. **7,500.00**



383 ★ 1442b, 1992 42c Canada in Space Se-tenant mint pane of twenty stamps, bottom row shows the MISSING HOLOGRAM error, a very scarce and sought-after modern error, VF NH; 2007 Greene Foundation cert. 5,000.00



384 ★ 1499b, 1499ii, 1993 43c Christmas Personages Left margin strip of three imperforate vertically between margin and left-hand stamp and between right-hand pair, very scarce, VF NH 2,200.00



-385-



387

- 385 ★ 1534ii, 1535ii, 1994 52c & 90c Christmas Carolling Unissued denominations - prepared in anticipation of a rate increase which was not approved, VF NH **800.00**



386



389

- 386 ★ 1545a, 1995 88c Canadian Art - Floraison Pristine mint single showing the rare gold (framing) omitted; a sought-after modern error, VF NH **2,000.00**
- 387 ★ 1764b, 1998 45c Christmas Angels, Perf 13.1x13.6 Elusive perforation change mint single, sheet margin at left, VF NH **500.00**



- 388 ★ 1768b, 1999 95c Year of the Rabbit Mint souvenir sheet with red colour and tagging omitted. Very scarce as only 25 have been reported, VF NH; 2007 Greene Foundation cert. **1,250.00**
- 389 ★ 1800a, 1999 95c Canadian Art - Coq licorne Striking mint single with silver (framing) colour omitted; rare as only one pane of 16 stamps has been reported, VF NH **1,750.00**



- 390 ★ 1883a, 2001 47c Lunar New Year - Year of the Snake Left sheet margin single with gold colour (Chinese symbol) omitted, a desirable missing colour error, VF NH **2,000.00**



391



392

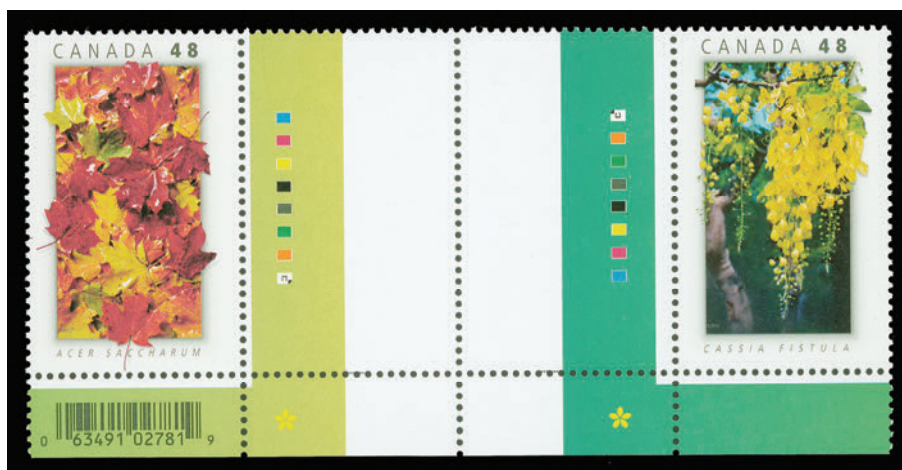
- 391 ★ 1931i, 2002 48c Flag over Canada Post Head Office Self-adhesive serpentine die cut mint single with missing blue (sky) colour, VF NH **500.00**
- 392 ★ 1932a, 2002 48c Golden Jubilee Pristine imperforate pair from top right corner, shows "traffic lights" and Ashton-Potter imprint in margin, choice, VF NH **1,800.00**



- 393 ★ 1934 footnote, 2002 \$1.25 Lunar New Year - Year of the Horse Souvenir sheet essay, imperforate with full embossing and showing overall quadrille grid, untagged; a very scarce item, VF NH; 2005 Sismondo cert. **850.00**



- 394 ★ 1969a, 2003 48c Lunar New Year - Year of the Ram Se-tenant left margin mint strip of three, gold (foil stamping) Chinese inscription omitted on left two stamps, with normal stamp at right, VF NH
1,200.00



- 395 ★ 2000-2001, variety, 2003 48c National Emblem An impressive unsevered interpanneau se-tenant gutter margin pair, the first one we have seen, very scarce, VF NH
Est. 250.00+



A warm welcome to The Canadian Philatelic Society of Great Britain

Founded 70 years ago to promote and study all aspects of philately in British North America (Canada and its Provinces), the Society offers its members:-

- A quarterly award-winning magazine, 'Maple Leaves'
- Two auctions a year with many hundreds of lots
- An extensive library of published books and articles
- Two exchange packet circuits

For more information or membership details visit our website at www.canadianpsgb.org.uk or write to the Secretary: John Hillson, Westerlea, 5 Annanhill, Annan, Dumfriesshire DG 12 6TN



BOOKLETS



- 396 ★ BK1, 1900 25c Red on Pink Enamel Cover** Complete booklet in English, single staple over red binding tape, containing all information rate sheets, glassine interleaves and two Fine centered booklet panes of six of the 2c carmine Numeral on horizontal wove paper, Die II, some gum disturbance from interleaves and minor blemishes on front cover, otherwise sound, a rare intact booklet, F-VF **4,500.00**



397



398

- 397 ★ BK3c, 1913 25c Green on Pale Green Cover** Complete booklet with dark green binding tape under staple, all panes of the 1c yellow green on vertical wove paper are fresh, well centered and never hinged; serif capitals on inside rate sheets, covers are unmarked and clean, VF **375.00**
- 398 ★ BK3f, 1913 25c Green on Pale Green Cover** Complete booklet in English, dark green binding tape under staple, contains four panes of six of the 1c yellow green Admiral on vertical wove paper, all nicely centered and fresh NH; sans-serif capitals rate sheets that include war tax rates, faint bend on front cover; an elusive booklet, VF **1,350.00**



399



400

- 399 ★ BK15a, 1930 25c Black on Dull Green Cover** Complete booklet in French containing two panes of six of 2c dull green Arch flat press, well centered and never hinged; a scarce booklet, VF **750.00**
- 400 ★ BK15c, 1930 25c Black on Dull Green Cover** Complete booklet in English, no binding tape under staple, containing two 2c dull green rotary press printing panes of six, both fresh and fine NH; pencil notations on covers, seldom seen, Fine **600.00**



401



403

- 401 ★ **BK21a, 1933 25c Black on Brown Cover** Complete booklet in French, no binding tape under staple, containing two 2c black brown Medallion panes of six, both well centered with full original gum, never hinged; Type I slogan inside text, light crease along staple line on back cover, condition is noticeably superior than most, nearly VF **1,800.00**



- 402 ★ **BK21b, 1933 25c Black on Brown Cover** Complete booklet in French, no binding tape under staple, containing two NH 2c black brown Medallion panes of six, one is Fine, the other VF; Type II slogan inside text, covers are clean and unmarked, negligible crease near staple line, an elusive booklet, condition well above average, VF **1,800.00**
- 403 ★ **BK23a, 1933 25c Black on Light Blue Cover** Complete combination booklet in English, no binding tape under staple, containing the three different Medallion panes of four, nicely centered fresh mint NH; Type I slogan inside text, seldom seen choice, VF **525.00+**

AIRMAIL



405



406



408

- 404 P **C1, 1928 5c Brown Olive** Plate proof pair in issued colour on india paper, VF
(Illustrated on Page 102) **400.00**
- 405 ★ **C3b, 1932 6c on 5c Brown Olive** Very scarce double surcharge variety, above average centering for this with perforations well clear of design at top, Fine+ VLH **850.00**
- 406 ★ **C3c, 1932 6c on 5c Brown Olive** Appealing mint single with triple surcharge variety, large part original gum, Fine and scarce **200.00+**



- 407 ★ **C3d, 1932 6c on 5c Brown Olive** Left sheet margin mint horizontal pair, with and without surcharge error. Minor perf flaws between sheet margin and left stamp, rare, Fine LH; photocopy of 1957 BPA certificate for a block, this being the lower pair. **900.00**
- 408 ★ **C3ii, 1932 6c on 5c Brown Olive** Choice mint single with large margins, clearly showing a prominent shift of the surcharge (5mm to left), VF+ NH *(Illustrated on Page 101)* **250.00+**



404



409



410

- 409 ★ **C5b, 1935 6c Red Brown** Imperforate pair without gum, fresh and VF **800.00**
- 410 ★ **C5ii, 1935 6c Red Brown** Lovely fresh mint single showing the "Moulting Wing" plate variety (Plate 1, LR pane, Position 14), VF NH **225.00**



- 411 ★ **C5iii, 1935 6c Red Brown** A marvelous imperforate mint gutter block of eight, post office fresh and completely sound with large margins all around, faint trace of hinging at top leaving left and right-hand vertical pairs never hinged. Very rare as only ten such blocks exist, this block is among only eight that are sound. A great airmail showpiece, XF VLH / NH **6,900.00**



412



413



414

- 412 ★ **C6a, 1938 6c Blue Monoplane over Mackenzie River, NWT** Fresh imperforate mint pair with sheet margin at left, VF LH **800.00**
- 413 ★ **C7a, 1942 6c Deep Blue War Issue Airmail** Choice imperforate mint pair with sheet margin at right, large margins on other sides; Kessler guarantees on reverse, VF+ LH **800.00**
- 414 ★ **C8a, 1943 7c Deep Blue War Issue Airmail** Fresh imperforate mint pair with large even margins, VF LH **800.00**



- 415 ★ **C8i, 1943 7c Deep Blue War Issue Airmail** Remarkable horizontal mint pair imperforate vertically between sheet margin and stamp, brilliant fresh colour, well centered and with full original gum, never hinged; tiny owner's initial handstamps on reverse. Very rare as only one sheet (ten examples) exists, VF NH **1,500.00+**



416



417

- 416 ★ **CE1a, 1942 16c Bright Ultramarine Air Mail Special Delivery** Lovely, fresh and large margined imperforate pair, faint trace of hinging at top, VF+ VLH **800.00+**
- 417 ★ **CE2a, 1943 17c Bright Ultramarine Air Mail Special Delivery** Full margined imperforate mint pair, minor gum wrinkle on lower stamp, fresh and VF NH **1,200.00**



SPECIAL DELIVERY



418



419

- 418 ★ **E1b, 1898-1920 10c Yellow Green** A selected mint example of this elusive shade, very well centered, lovely bright colour, intact perforations and full pristine original gum, VF NH **600.00**
- 419 ★ **E1ii, 1898-1920 10c Light Green** Selected fresh and nicely centered mint single showing the distinctive "no shading in value tablets" variety, full original gum, never hinged. Hard to find, VF NH **600.00**



421

- 420 ★ **E3a, E3b, E3c, 1927 20c Orange** Three items including imperforate pair, horizontal pair imperforate vertically and vertical pair imperforate horizontally. All three well centered and fresh, VF NH **1,500.00**
- 421 ★ **E3iii, 1927 20c Orange** A striking mint vertical pair imperforate between sheet margin and top stamp, light marginal fold as do all ten examples known, fresh with full original gum. A rare perforation variety, VF NH **2,000.00**



422



423

- 422 ★ E5a, 1932 20c Henna Brown Pristine fresh imperforate mint pair, large margins, VF+ LH 800.00
- 423 ★ E6a, 1935 20c Dark Carmine Imperforate pair with sheet margin at left, small vertical gum bend at top; owner's handstamp on reverse, VF NH 1,400.00



- 424 ★ E7a, 1939 10c Dark Green Superb margined imperforate pair, brilliant fresh. An elusive pair in such top-quality, XF NH 1,400.00+



425



426

- 425 ★ E8a, 1938 20c Dark Carmine A remarkably choice imperforate mint pair with large even margins, post office fresh. A beautiful pair in top-quality, XF NH 1,400.00+
- 426 ★ E10a, 1942 10c Green War Issue Superb imperforate mint pair with full even margins, choice, XF NH 1,200.00+



REGISTRATION AND POSTAGE DUE



427



428



- 427 ★ **F1 shade, 1880s 2c Bright Orange, Perf 12** Exceptionally well centered in an appealing pastel shade of orange, full original gum, VF LH **150.00+**

- 428 ★ **F1iv, 1886-1888 2c Dull Red Orange (Plate 1), Perf 12** An attractive mint single showing the **burr to right of "T" of "CENTS" variety** (Position 22), Harrison classification as worn state, rarity factor "R" (rare), lovely shade and large part original gum. A great stamp for the plate variety specialist, VF **600.00**



- 429 ★ **F2c, 1888 5c Green (Plate 1) on Vertical Wove Paper** Choice imperforate pair with portion of plate imprint (Boggs Type V) in sheet margin at left, large margins on other sides, pristine and fresh with full original gum that has never been hinged, very scarce thus, VF+ NH **3,000.00**



- 430 ★ **F2ii variety, 1880s 5c Green (Plate 2), Perf 12** Nicely centered unused example with large margins, showing **Major Re-entry** (Position 82) in second "A" of "CANADA" and in "S" of REGISTERED", very scarce, VF **Est. 300.00+**



431



432



- 431 ★ **F3, 1876 8c Dull Blue, Perf 12** Reasonably well centered mint example with large portion of characteristic dull streaky original gum associated with this denomination, F-VF OG **625.00**

- 432 ★ **F3ii, 1876 8c Bright Blue, Perf 12** A nicely centered mint single showing the elusive **horizontal line through "I" of "EIGHT"** at left, negligible short and toned perf at top, lovely colour and large part original gum. A rarely offered plate variety in mint condition, VF OG **1,250.00+**



- 433 ★ J1b, J2b, J4b, 1906 1c, 2c & 5c Postage Due Set of three horizontal imperforate pairs, bright colours and full margins, ungummed as issued, VF **1,500.00**



- 434 ★ J2, 1917 2c Violet Postage Due (Wet printing) Upper left plate imprint "OTTAWA - No - A3" mint block of four showing full strength Type A lathework opposite position 11, nicely centered and fresh, natural diagonal gum bend at lower left, VF NH, a scarce plate positional multiple. **Est. 750.00+**



- 435 ★ J2a, 1924 2c Violet on Thin Paper (Wet printing) Lower left mint block of four, well centered with bright colour on distinctive paper showing clear weave, strong and full Type D lathework. A beautiful lathework multiple, very scarce thus, VF NH **6,000.00**



- 436 ★ J10a, 1930-1932 10c Dark Violet Lower sheet margin mint vertical pair imperforate horizontally, usual centering for this perforation error from the unique sheet, Very Good hinged. 750.00



- 437 ★ J11a, 1934 1c Dark Violet Top sheet margin imperforate mint pair, fresh with pristine original gum, XF NH 1,000.00



- 438 ★ J15a-J20a, 1935 1c-10c Dark Violet Complete set of four full margined imperforate pairs, each with lovely fresh colour and full undisturbed original gum, never hinged, scarce thus, VF NH 1,500.00

WAR TAX



439



440

- 439 ★ **MR1, 1917 1c Green (Wet printing), Perf 12** Well centered block of four with full strength Type B lathework, VF NH **600.00**
- 440 ★ **MR2, 1917 2c Carmine (Wet printing), Perf 12** Nicely centered mint block with bright colour, full Type B lathework, VF NH **750.00**



441



442



443



444

- 441 ★ **MR2, 1915 2c Carmine (Wet printing), Perf 12** Precisely centered mint single from upper left corner margin, rich colour on fresh paper and full original gum. A choice stamp that stands out, XF NH **105.00+**
- 442 ★ **MR2a, 1915 2c Rose Carmine (Wet printing), Perf 12** Well centered mint single in this distinctive shade, VF NH **135.00**
- 443 ★ **MR3a, 1916 2c+1c Dark Carmine, Die II (Wet printing), Perf 12** Selected mint example of the scarcer die, characteristic darker colour, well centered with large margins, VF LH **400.00**
- 444 ★ **MR3b, 1915-1916 2c+1c Rose Red, Die I (Wet printing), Perf 12** Premium mint example, gorgeous colour and exceptionally well centered with well balanced large margins, full pristine original gum. A great stamp, XF NH **210.00+**



445



446



447

- 445 ★ **MR4, 1917 2c+1c Brown, Die II (Wet printing), Perf 12** Mint block with full Type A lathework, **doubling** (15mm wide) of the lathework below lower left stamp, full original gum and very scarce, Fine NH **2,000.00**
- 446 ★ **MR4, 1917 2c+1c Brown, Die II (Wet printing), Perf 12** Well centered mint block showing full Type A lathework, tiny natural paper inclusion on lower left stamp, VF OG **500.00**
- 447 ★ **MR4, 1917 2c+1c Brown, Die II (Wet printing), Perf 12** Lower right mint Plate A39 imprint block showing Type A lathework at left, natural bend on lower right stamp, VF LH **Est. 250.00+**



448



449

- 448 ★ **MR4b, 1916 2c+1c Yellowish Brown, Die I** Imperforate pair with enormous margins, ungummed as issued, XF **275.00+**
- 449 ★ **MR4c, 1916 2c+1c Brown, Die II (Plate 17)** The elusive and sought-after imperforate pair, characteristic deeper shade, full margins and ungummed as issued. Only one sheet (50 pairs) was issued, VF **2,500.00**



450



451

- 450 ★ **MR4i, 1917 2c+1c Yellow Brown, Die II (Wet printing), Perf 12** Well centered mint pair in a distinctive bright shade, showing Type A lathework, large margins, VF NH **480.00**
- 451 ★ **MR4ii, 1916 2c+1c Yellow Brown, Die I, Perf 12** Horizontal pair imperforate vertically, ungummed as issued, scarce and F-VF **560.00**



452



453



454

- 452 ★ **MR6, 1916 2c+1c Carmine, Die I (Wet printing), Perf 8 Vertically** Well centered coil mint single with large margins, intact perforations and full original gum, never hinged. A choice stamp, VF+ NH **600.00**
- 453 ★ **MR6ii, 1916 2c+1c Rose Carmine, Die I (Wet printing), Perf 8 Vertically** Selected mint single of this distinct shade, nicely centered with full original gum, scarce, VF NH **675.00**
- 454 ★ **MR7iii, 1916 2c+1c Yellow Brown, Die I (Wet printing), Perf 8 Vertically** Beautifully fresh and nicely centered example of the scarcer die, VF NH **750.00**

OFFICIAL



- 455 ★ **OA246-OA248, 1939 1c, 2c & 3c Royal Family, 5-Hole OHMS** Mint set of three; rarely seen in MINT condition, F-VF NH (Cat. \$300 for used only; unpriced mint) **Est. 350.00+**



456



X457

- 456 ★ **O223, 1935 10c RCMP, 4-Hole OHMS** Striking mint single with **double** perforated OHMS (Position E), rare, VF LH **Est. 300.00+**
- 457 ★ **O223-O226, 1935 10c-50c Pictorial Issue, 4-Hole OHMS** Scarce mint set of four, well centered, fresh and with full original gum; 10c is LH, others are NH, VF **1,125.00**



- 458 ★ **O239-O240, 1937 2c & 3c KGVI Mufti 4-Hole OHMS, Perf 8 Vertically** Mint singles; 2c is rare position G, 3c stamp with normal position E. Seldom seen, VF OG **450.00+**



- 459 ★ **OC8 variety, 1943 7c Deep Blue Airmail 4-Hole OHMS** Fresh mint horizontal pair with and without OHMS perfin position C. A rare error, VF NH **Est. 300.00+**



460



461

- 460 ★ **OE5, 1932 20c Henna Brown Special Delivery 4-Hole OHMS** Mint example of this underrated stamp, well centered, often missing from even the most advanced collections, F-VF LH **Est. 500.00**
- 461 ★ **OE9, 1939 10c on 20c Dark Carmine Special Delivery 4-Hole OHMS** Premium mint example of this elusive perforated official, VF NH **400.00**



- 462 ★ **O1a, O2a, 1949-1950 1c & 2c King George VI War Issue "O.H.M.S." Official Overprint** Two well centered mint blocks both showing the **missing period after "S"** at lower right. Both LH at top leaving lower stamps including the varieties NH, VF and seldom seen **600.00**



463 ★ O6a, O7a, O8a, 1949-1950 10c, 14c & 20c Peace, "O.H.M.S." Official Overprint Selected, well centered lower left Plate No. 1 blocks, each showing no period after "S" variety, VF NH 950.00



464 ★ O9a, 1949-1950 50c Lumbering "O.H.M.S." Official Overprint Lower left mint Plate No. 1 block of four, the sought-after no period after "S" variety on lower right stamp; fresh, well centered, hinged only at top leaving the overprint variety never hinged, VF; 2002 Greene Foundation cert. 2,400.00



A REMARKABLE OVERPRINTED OFFICIAL PLATE BLOCK
ARGUABLY THE RAREST CANADIAN VARIETY
OF THE KING GEORGE VI ERA



465 ★ **O10a, 1949-1950 \$1 Train Ferry "O.H.M.S." Official Overprint** A remarkable lower left mint Plate 1 block of four showing the **missing period after "S"** at lower right (Position 47) - by far the rarest of all overprinted official varieties as fewer than a half dozen are known. Well centered with small hinge mark entirely confined in top left selvage, all four stamps with pristine original gum, never hinged. An exceptional positional plate block, VF+; 1988 Greene Foundation cert. **9,000.00+**

THIS IS ONLY THE SECOND INTACT PLATE BLOCK SHOWING THE OVERPRINT VARIETY WE HAVE EVER OFFERED AT AUCTION.





466 ★ O38ai, 1961-1962 50c Textile Industry, Flying "G" Official Overprint Upper right Plate 2 block showing the elusive fishhook "G" variety (Position 5), in pristine condition, VF NH 1,000.00



467



468



469

- 467 ★ O46a, 1963 1c Deep Brown Cameo, "G" Official Overprint Mint single showing double "G" overprint variety - two close impressions side-by-side as normally seen. Originally discovered by K. Bileski with his "73" pencil on reverse indicating the plate position; a very scarce variety as only 80 were ever found, VF OG 1,000.00
- 468 ★ O47a, O47iii, 1963 2c Green Cameo "G" Official Overprint Upper right corner vertical strip of four, "G" badly shifted on three stamps, top stamp without the overprint variety; pencil signed by K. Bileski on reverse in top margin, striking and scarce, VF NH; 2014 Greene Foundation cert. 2,175.00
- 469 ★ O47ii, 1963 2c Green Cameo "G" Official Overprint Upper left corner margin vertical pair showing the elusive wide spaced "G" variety; pencil signed K. Bileski on reverse in top margin, VF NH; 2014 Greene Foundation cert. 1,000.00



470



471



472



473

- 470 ★ PWF1, 1940 Prisoner of War Free Franks "P/W" in Large Type Imperforate single without gum, VF **600.00**
- 471 ★ PWF2, 1941 Prisoner of War Free Franks "P/W" in Small Type Imperforate mint single in premium condition, fresh with pristine original gum, VF NH **1,200.00**
- 472 ★ PWF3, 1943 Prisoner of War Free Franks Imprint "...5M-5-43 (2)" at Upper Right Imperforate single without gum, small horizontal crease at top, VF appearance **500.00**
- 473 ★ PWF4, 1944 Prisoner of War Free Franks Imprint "5M-11-44..." at Upper Right Mint single, rouletted at foot (Position 1 in the pane of five), large part OG, VF **400.00**



- 474 ★ PWF6a, 1946 Prisoner of War Free Franks Rouletted Fresh mint pane of five, VF NH **412.50**

COLLECTION BALANCES



- 475 ★◎ **1851-1859 Pence Issues** Balance of collection consisting of 13 stamps (9 of which have Greene certs.), mostly different including printings, a few plate varieties. Mixed condition, but noted some sound and scarcer unused stamps. **Est. 5,000.00+**



- 476 P **Group of Trial Colour and Plate Proofs** Consisting of seven different Pence and Cent issues on india or card mounted india paper; 3p red, 6p grey with SPECIMEN in orange, 12p black with vertical SPECIMEN in carmine (small hidden faults), 1/2p rose with SPECIMEN in green, 7 1/2p green, 10c black brown with diagonal SPECIMEN in carmine and 17c pale blue right sheet margin pair, VF (Unitrade \$4,750) **Est. 1,500.00**



- 477 ★◎ **1859-1867 Cents Issues** Balance lot of 28 stamps (four have Greene certs.), mostly different printings, shade / perforation combinations, plus a few plate varieties. Mixed condition, but noted some sound stamps, worth a close look. **Est. 2,000.00+**



- 478 ★◎ **1868-1890s Large Queens** Balance of collection consisting of 48 stamps (8 of which have Greene certs.) mainly unused, some mint OG. Mostly different printings, papers and / or perforation combinations, plus a few listed plate varieties. Mixed condition to be expected on these, but noted many sound examples. A useful lot for further specialization. Well worth close examination. **Est. 4,000.00+**



- 479 ★◎ **1870s-1890s Small Queen and Widow Weed Issues** Comprehensive balance of 70 singles and 6 imperforate pairs, mint or unused. Includes a wealth of printings, shades, non-listed and listed plate varieties - noting ½c horizontal pair imperforate vertically (clipped at sides), 1c Strand of Hair in mint strip of four, 2c mint Major Re-entry, etc. Some faults and / or oxidization to be found, but many are sound, Fine or better; worth closer inspection. **Est. 3,000.00+**



- 480 ★ **1897-1908 Queen Victoria & Edward VII Issues** Collection displayed on Lindner pages, includes complete mint sets of 1897 Jubilee (less \$2), Leaf, Numeral (less 20c), Maps, KEVII and Quebec (less 7c), plus additional shades, printings, varieties, imperforate pairs (Unitrade #74v, 75vi, 77c, 85a, 86a), Numeral plate proof set of ten. A few flaws or with gum problems, but generally sound throughout, noting several mint NH singles; overall centering ranges from fine to extremely fine. **Est. 4,000.00+**



- 481 ★ **1911-1927 King George V Admiral Issue** Mint collection displayed on Lindner hingeless pages, many dozen mint singles, plus various 1924 imperforates / part perforated pairs, couple booklet panes (#104a, elusive #107f). Includes a wealth of shades / printings from One cent to the One dollar, followed by complete set of coil singles. Also note #115a 8c imperforate pair without gum, #139 essay pair, 139i and nice group of War Tax with better #MR2B-MR2D, MR2Bi-MR2Di, MR4a, MR4iv, etc. A few flaws to be expected, but a solid collection on this popular definitive set, many stamps being never hinged, ranging from Fine to Very Fine **Est. 2,500.00+**



- 482 ★ **Selection of Admiral Issue Lathework** Includes fourteen blocks of four, mostly mint original gum, a few are NH, plus \$1 deep orange wet printing lathework single; a few flaws noted, but generally Fine or better **Est. 1,000.00+**
- 483 ★ **1917-1947 Mint / NH Collection** Complete regular issues as well as coil singles, plus additional coil strips, various listed and non-listed varieties, shades, etc. Noted #159iii, 165i, 176i, 173 UL Plate 1 sheet of 100 (small piece of selvage missing and gum crease on two stamps, NH and shows unusual "1" number at LL), 191 surcharge varieties, 199i, 199ii, 208iv gutter strip of four, 216i, 221a, 233i, etc. Many are NH; condition overall is selected, Fine to Very Fine *(Not Illustrated)* **Est. 2,000.00+**



- 484 ★ **1927-1933 Imperforate Pairs** Eight different, includes #146a-148a, 159b horizontal pair imperf vertically, 173a, 201a, 202a and 204a. Most with disturbed or glazed original gum, couple without gum, VF; Unitrade \$5,980. **Est. 1,000.00+**
- 485 ★ **1949-2012 Mint NH Collection** Comprehensive collection housed in six Lindner hingeless albums (high original retail value), virtually complete basic definitive and commemorative issues, plus souvenir sheets, miniature panes, booklet singles, tagging, etc. Also noted some late 1980s perf changes. A clean lot, VF NH (Face value alone is \$1,645) *(Not Illustrated)* **Est. 1,250.00**
- 486 ★ **1969-1995 Imperforates and Varieties** Various imperforate coil pairs; including 6c orange, DF and 6c black Centennial, latter with horizontal crease on bottom stamp and scissor cut in margin but rare, followed by 8c QEII, 12c, 14c and 17c Parliament, 32c Maple Leaf, 42c, 43c & 45c Flag, plus 1973 15c RCMP, close margin foot but sound, 1978 12c Falcon (usual creases). Also \$1 Fundy National Park, with vertical shift of engraving, also other example and \$1 Glacier National Park, both stamps showing kiss print of engraving and 38c Parliament mint single with double impression variety. VF NH otherwise noted. (Unitrade \$7,825+ for listed varieties) *(Not Illustrated)* **Est. 1,500.00+**



- 487 ★ **1913-1935 King George V Booklets** Valuable group of 27 complete booklets (a couple duplicates noted) from Admiral period to 1935. Includes Unitrade BK3cE, 3eE (2), 4aE, 4bE, 4bF, 5dE (3; noted two different shades), 5fE (2), 5fF, 9aE, 9aF, 10bE, 10cE, 11E, 12E, 13, 15aE, 15aF, 16aE, 17aE, 20bE, 21bE, 23bF and 25F. Condition ranges from mixed to Very Fine. Cat. \$11,385 for Fine. **Est. 2,500.00+**
- 488 ★ **1937-1951 King George VI Booklets** Nice selection of 59 complete booklets, mostly different with emphasis on KGVII including better such as BK28bF, 29bF, 31bE, 31eE, 31eF, 31gE, 33bF, 34dF, etc. Fine or better; (Cat. \$2,445+) *(Not Illustrated)* **Est. 750.00**
- 489 ★ **1953-1971 Early QEII Era Booklets** Group of 26 different (total of 33) complete booklets with better Centennial issues such as BK59d, 63b (OPAL) perforated gutter, 68a-d complete with all six different types, etc. Mainly VF throughout *(Not Illustrated)* **Est. 150.00**



- 490 ★ **Back of Book Issues** Balance of collection consisting of complete airmails, special delivery, registration letter stamps, postage dues up to first "Red" issue and officially sealed stamps. Noted additional items with printings, shades and varieties, etc., such as C1a, C1b, C1c, C3a, C5i, C9i, E1ii, E1iv, E2a, various shades of F1 and F2, etc. A few flaws to be expected, some are unused but many are sound mint, centering ranges from Fine to Very Fine and many are NH. **Est. 1,250.00+**
- 491 ★◎ **Four-Hole Perforated OHMS Selection** A few dozen mostly mint OG or NH including O237, O241-O245, O241a, O245i, O246-O248, O249-O262, O268-O273, OC1-OC9, OCE1-OCE4, OE6, etc. A few multiples noted as well with O261 LL Plate 1 block, O268 UR Plate 1 block, O272 UL Plate 1 block, OE7 UL Plate 1 block, etc. Some used singles noting key OE5. F-VF *(Not Illustrated)* **Est. 500.00+**
- 492 ★ **Overprinted "OHMS" and "G" Officials** Complete mint sets, also several listed varieties such as O1i-O4i, O12i, O15i, O15b in a block of four, O15Ai, O15Ac in LR block of 20, O20i, O26a (2001 Greene cert.), O47i in LL block of four, O47iii, CO1a LL plate 2 block, etc. Mostly mint NH throughout, F-VF or better *(Not Illustrated)* **Est. 500.00+**

END OF AUCTION
THANK YOU

THE PLACING OF A BID SHALL CONSTITUTE ACCEPTANCE OF THE CONDITIONS OF SALE

BIDDING

1. All bids are per lot, as numbered in the catalogue. Eastern Auctions Ltd. reserves the right to withdraw any lot prior to sale, to divide a lot or to group two or more.
2. The highest bidder shall prevail at one advance over the next highest bid. Should a dispute arise between bidders, the decision of the auctioneer as to the successful bidder or the re-offering or resale of the lot in dispute shall rest entirely in the judgment of the auctioneer. **On all lots sold a commission of 15% on the hammer price will be payable by the buyer.** The auctioneer shall regulate the bidding and reserves the right to refuse any bid believed by him not to be made in good faith.

PAYMENT FOR PURCHASES

3. **U.S. funds are acceptable only at the equivalent amount shown on the invoice.** Visa, MasterCard and Paypal are accepted at a charge equal to 3.5% of the hammer amount. Please include the information on your bid sheet.
4. Payment for lots, including those on which opinions are desired under Condition of Sale 8, shall be made as follows:

A successful mail bidder will be notified of lots purchased and must remit before the lots are sent. A person known to us, or who furnishes satisfactory references, may at our option have purchases forwarded for immediate payment. Delivery will be to the address on the bid sheet. Proof by receipt of sending at the advised address shall constitute delivery. Postage and insurance are payable by the buyer.
5. Title shall not pass to the buyer until Eastern Auctions Ltd has received full payment.
6. Buyers agree to pay for lots as specified above and no credit is extended, a late payment charge of 2% per month is added to overdue payments, minimum \$5.00.

QUALITY AND AUTHENTICITY

7. Each lot is sold as genuine and correctly described based on individual description as modified by any specific notations in this catalogue including (but not restricted to) “Key to Cataloguing”.
 - (a) **QUALITY.** Any lot, description of which is incorrect, is returnable within forty-five days from closing date of auction. If the opinion of a mutually acceptable authority is desired, this period will be extended as noted in Condition 8. All disputed lots must be returned intact in the condition received. Photographed lots are not returnable on account of centering or perforations. Lots containing more than twenty stamps, described “as is”, or described as having faults are not returnable for any reason. Bidders who have had an opportunity to examine the lots prior to the sale may not return the lots.
 - (b) **AUTHENTICITY.** Any lot, which is declared other than genuine by a mutually acceptable authority is returnable, provided the lot is received within a period of four weeks from the date of the auction. Proof that a “mutually acceptable authority” declines to express an opinion is not normally grounds for the return of a lot.
 - (c) Returns must be made by registered mail.
 - (d) Lots marked or encapsulated by an expert committee are not returnable for any reason.
 - (e) Lots accompanied by an existing certificate are not returnable.

EXTENSION OF TIME

8. When an opinion from an acceptable authority is necessary, the buyer shall:
 - (f) Submit the lot without delay to either; (1) the Vincent Graves Greene Foundation or Sergio Sismondo for Canada and British North America; (2) Sergio Sismondo, British Philatelic Association or the Royal Philatelic Society of London for British Commonwealth; (3) Sergio Sismondo for Foreign and (4) PF (Philatelic Foundation) for United States.
 - (g) Ensure that advice in writing to this effect be received before the auction.
 - (h) Remit in full for the lot. The buyer shall be reimbursed in full for any lot declared other than genuine.

EXPENSES OF CERTIFICATION

9. Expenses shall be borne by the buyer except where the lot is other than as described and is returned within the conditions set forth above. Our responsibility is expressly limited to:
- (a) The actual cost of the opinion if up to \$30.00 or less, or
 - (b) The cost of the opinion up to 5% of the sale price but not exceeding a maximum of \$100.00.
 - (c) We are not responsible for expenses on the return of any lot.

SALES TAXES

10. Canadian residents will be charged GST or HST as appropriate for their mailing address. Foreign residents are liable for GST only on the buyer's premium.

This firm is a subscriber to the ASDA Code of Ethics for Auction firms.

KEY TO CATALOGUING

SYMBOLS & MAJOR ABBREVIATIONS

★	Mint	⊙	Used	E	Essay
☒	Cover	(/)	Incomplete Set	F	Forgery
(-)	Complete Set	R	Reprint	P	Proof
◆	Graded Stamp	CDS	Circular Date Stamp	L	Literature

CONDITION

The various grading of stamps are in order; **Extremely Fine; Very Fine; Fine and Very Good.** In the case of sets, large blocks, sheets, etc., the condition quoted represents the average and quality above and below this standard can be expected. Minor perf separation can be expected on larger multiples.

Mixed condition: in large lots, a range of condition can be expected, from small faults to Very Fine.

GUM

NH	Never Hinged – with full original gum in Post Office state and unmounted.
LH	Lightly Hinged – with full original gum showing some evidence of a previous hinge.
OG	Original gum – showing some evidence of a previous hinge, a portion of which may still be present.
Part OG	Part original gum.
Unused	Unused without original gum, or regummed.
Ungummed	Without gum as issued.

A NOTE ON HINGING

Bidders are reminded that, in accordance with industry standards, hinging is not described with respect to used stamps or stamps and proofs that were printed without gum. Hinging on these items is irrelevant to their condition and value. If hinging is important to you in such cases please contact us before bidding and request further information. **We will not accept the return of used stamps or ungummed items due to hinging.**

Hinging on mint stamps is always disclosed, however, never hinged status should not be expected unless specifically stated “never hinged” or “NH”.

ESTIMATED VALUES

If an estimated cash value is given, it is shown in the description and always indicated by the abbreviation “Est.”. It is used where the lot is large or where the actual value has little relation to the catalogue price. **It represents the auctioneer’s appraisal of the true CASH value of a lot and the figure is invariably close to the actual realization.** It is useless for mail bidders to list any bids that are only a low proportion of such estimates.

CATALOGUES AND HANDBOOKS USED IN LISTING

- Unitrade Specialized (2014 Edition)
- Scott 2014 Classic Specialized Catalogue of Stamps & Covers 1840-1940
- Stanley Gibbons Commonwealth & British Empire Stamps 1840-1970 (2014 Edition)
- Robson Lowe, The Encyclopaedia of British Empire Postage Stamps Vol. V North America, 1973
- Minuse and Pratt, The Essays and Proofs of British North America, 1970
- Fred Jarrett, Stamps of British North America, Quarterman Publications, 1975
- The Canadian Revenue Stamp catalogue, E.S.J. van Dam, 2009 Edition
- Winthrop Boggs, The Postage Stamps and Postal History of Canada, 1974

BIDDING INCREMENTS

The auctioneer may regulate the bidding at his discretion. However, to assist absentee bidders in establishing their maximum bid for each lot, the increments shown below will be used in most cases. We recommend that written bids conform to these increments (those which do not will be reduced to the previous level).

BIDDING IS CONDUCTED IN THE FOLLOWING INCREMENTS:

<i>\$10 - \$50..... \$2.00</i>	<i>\$325 - \$750..... \$25.00</i>	<i>\$3,250 - \$7,500..... \$250.00</i>
<i>\$55 - \$130..... \$5.00</i>	<i>\$800 - \$1,500..... \$50.00</i>	<i>\$8,000 - \$20,000..... \$500.00</i>
<i>\$140 - \$300..... \$10.00</i>	<i>\$1,600 - \$3,000..... \$100.00</i>	<i>\$21,000 - OVER..... \$1,000.00</i>

TELEPHONE BIDS

Bids may be placed during office hours Monday to Friday from 8:00 AM to 5:00 PM Atlantic Standard Time by dialing 1 (506) 548-8986 or toll free in North America 1 (800) 667-8267. Bids may also be placed during the viewing sessions only, by calling the hotel directly at 1 (902) 423-6331 and asking for “Eastern Auctions”.

Please note all telephone bids must be confirmed by mail, e-mail or fax.

FAXING OR E-MAILING YOUR BIDS

You can fax or e-mail your bids before 11:00 AM A.S.T. on the closing day of the auction.

Fax: 1 (506) 546-6627, or toll free in North America 1 (888) 867-8267.

E-mail address: *easternauctions@nb.aibn.com* or *pam.ross@easternauctions.com*

BIDDING BY MAIL

If you wish to mail your bid sheet please allow at least two weeks for delivery. We often receive mail bids after the auction closing. These bids are unfortunately nullified. Bidders are urged to phone in their bids and then mail in their confirmation.

WEB SITE

You can view this auction on our Web Site at *www.easternauctions.com*. For your convenience, we have pictured almost every lot to facilitate your bidding. This will nicely compliment the catalogue due to constraints presented by a printed format.

AUCTION AGENTS

We are pleased to recommend the following agents:

Mr. Claude Michaud

P.O Box 31248 • Halifax • Nova Scotia • B3K 5Y1 • Canada
Tel: 1 (902) 443-5912 • Fax: 1 (902) 445-5795
E-mail: jcm.ph@ns.sympatico.ca

**Amanda Lewis &
Jerry Tucker**

21 Leo Ave, • Sussex • New Brunswick • E4E 1Z9 • Canada
Tel: 1 (506) 433-2232
E-mail: arl1964@yahoo.ca

Mr. Harold B. Gordon

712-5740 Cavendish Blvd • Montréal • QC • H4W 2T8 • Canada
Phone or Fax: 1 (514) 488-0445
E-mail: hbgordon@videotron.ca

Purser Associates

84 Webcower Road #2 • Arlington • MA • 02474-2323 • USA
Tel: 1 (857) 928-5140 • Fax: 1 (781) 777-1023
E-mail: info@pursers.com Web Site: www.pursers.com
Visa, MasterCard & American Express welcomed.

Mr. Charles Cwiakala

1527 S. Fairview Avenue • Park Ridge • IL • 60068 • USA
Phone or Fax: 1 (847) 823-8747
E-mail: cecwiakala@aol.com

Mr. Frank Mandel

P.O. Box 157 • New York • NY • 10014-0157 • USA
Tel: 1 (212) 675-0819 - Fax: 1 (212) 366-6462

Mr. Nick Martin

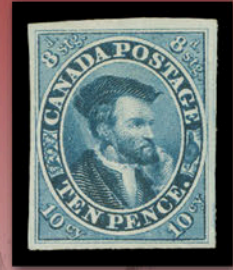
Angel House • Station Road • Sutterton • Boston
Lincolnshire • PE20 2JH • UK
Tel: (44) 012 0546 0968
E-mail: nick@loveauctions.co.uk
Web Site: www.loveauctions.co.uk

Jean & Tony Lancaster

16 Toms Lane • Kings Langley • Herts • WD4 8NB • UK
Tel: (44) 020 8547 1220 • Fax: (44) 020 8547 1220
E-mail: info@lancasterauctionagency.co.uk
Web Site: www.lancasterauctionagency.co.uk

Mr. Trevor Chinery

22 The Pastures • Cottesmore • Rutland • LE15 7DZ • UK
Tel: (44) 012 0533 0026 • Fax: (44) 015 7281 3226
E-mail: trevortrilogy@aol.com
Web Site: www.philtelic-auction-agent.co.uk



Gary J. Lyon
Licensed & Bonded Auctioneer