

**Public
Auction**

Eastern Auctions Ltd.



**The "Crossings" Collection
of Premium Quality Postage Stamps
of British North America**

**January 23rd
2010**



Eastern Auctions Ltd.

P.O. Box 250, Bathurst, New Brunswick, E2A 3Z2, Canada

Tel: 1 (506) 548-8986 • Fax: 1 (506) 546-6627

Toll Free Tel: 1 (800) 667-8267 • Fax: 1 (888) 867-8267

E-Mail: easternauctions@nb.aibn.com

Web Site: www.easternauctions.com

PUBLIC AUCTION BID SHEET

Sale Date: January 23rd, 2010

Please buy the following lots for me at prices not exceeding those shown. I have read the conditions of sale at the end of the catalogue and understand the 15% buyer's premium.

Signature: _____

Customer #: _____

Name: _____

Address: _____ City: _____

Province/State: _____ Postal/Zip Code: _____

Country: _____

Telephone: _____ Fax: _____

E-Mail: _____

Credit Card Payment

☐ Please charge my purchases to my credit card.



Card #: _____ Exp Date: _____

Cardholder's Name (as it appears on card): _____

Billing Address if different from address printed above:

Signature: _____

References (First time bidders only): _____

☐ Please tick this box if you are bidding in US Dollars:

If necessary to secure a lot, you may raise my bids by:

10% ☐ 20% ☐

☐ YES! I wish to subscribe to a full year of Catalogues and Prices Realized Reports for both Mail & Public Auctions.

Please find my ☐cheque ☐credit card number enclosed for my one-year subscription fee of CDN \$35.00 for Canadian residents, USD \$35.00 for United States residents and USD \$50.00 for overseas residents.

Bidding is conducted in the following increments:
(Uneven bids will be rounded downwards)

| | | | | | |
|---------------------------|-----------------------|-------------------------------|------------------------|--------------------------------|--------------------------|
| <i>\$10 - \$50.....</i> | <i>\$2.00</i> | <i>\$325 - \$750.....</i> | <i>\$25.00</i> | <i>\$3,250 - \$7,500.....</i> | <i>\$250.00</i> |
| <i>\$55 - \$130.....</i> | <i>\$5.00</i> | <i>\$800 - \$1,500.....</i> | <i>\$50.00</i> | <i>\$8,000 - \$20,000.....</i> | <i>\$500.00</i> |
| <i>\$140 - \$300.....</i> | <i>\$10.00</i> | <i>\$1,600 - \$3,000.....</i> | <i>\$100.00</i> | <i>\$21,000 - OVER.....</i> | <i>\$1,000.00</i> |

We are not responsible for bidder errors.

Please check bids and print clearly. All bids in even dollars please.

[illegible]

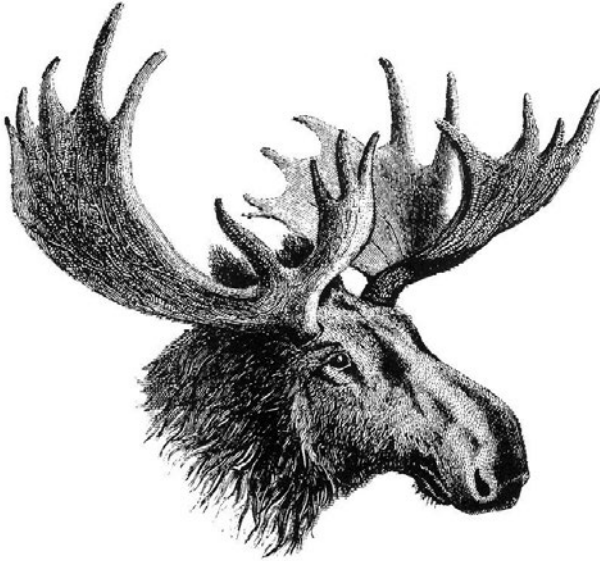
Bid early to avoid disappointment

View this sale on our Web Site: www.easternauctions.com

Please bid early to avoid disappointment. You may mail, fax, e-mail or phone in your bids. Phone bids must be confirmed in writing. Mailing your bids less than two weeks prior to the sale is not recommended.

Eastern Auctions Ltd.

PUBLIC AUCTION



January 23rd, 2010
Halifax, Nova Scotia

Eastern Auctions Ltd.

P.O. Box 250, Bathurst, New Brunswick, E2A 3Z2, Canada

Tel: 1 (506) 548-8986 • Fax: 1 (506) 546-6627

E-mail: easternauctions@nb.aibn.com

Web Site: www.easternauctions.com

Copyright © 2010 – All Rights Reserved

AUCTION INFORMATION

For assistance and further information
please contact:

SPECIALISTS IN STAMPS:

Gary Lyon
Yohann Tanguay

WEB SITE:

Luc Doucet

**CONSIGNOR SETTLEMENTS/
ACCOUNTS RECEIVABLE:**

Pamela Ross

**MAILING LISTS AND
SUBSCRIPTIONS:**

Billie-Jo Beaton

CATALOGUE EDITORS:

Luc Doucet
Yohann Tanguay
Sharon Willett

SHIPPING:

Catherine Gallagher

VENUE

The Lord Nelson Hotel & Suites

Victoria Suite

1515 South Park Street
Halifax, Nova Scotia
B3J 2L2 Canada
Tel: 1 (902) 423-6331

Toll Free Tel: 1 (800) 565-2020

For Room Reservations Only

THE TERMS OF SALE AND AUCTION AGENTS
ARE LISTED AT THE BACK OF THE CATALOGUE.

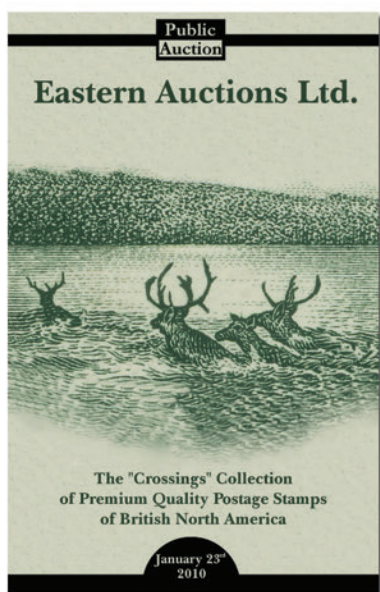
Viewing Sessions

Friday January 22nd, 2010 – 9:00am to 7:00pm

Saturday January 23rd, 2010 – 9:00am to 12:00pm

Auction Session

Saturday January 23rd, 2010 – 1:30pm (Lot 1 – 623)



Embarking on a quest to obtain a complete collection of British North America stamps in exceptional condition is a daunting task, one that no collector has ever completed. BNA is indeed a challenging area; many classics and errors are rarely available, and often only in poor condition when they do appear.

Knowledgeable collectors will appreciate the superb array of high quality stamps in the magnificent *Crossings* collection, the result of a labour of love that took over twenty years. Countless hours of searching were necessary to locate the stamps and have them properly identified and expertized.

Students of Newfoundland will be impressed by the coverage of the Cents Issues (Scott 24 through 60). Seldom available in even fine quality, almost all are present here in outstanding condition, with the vast majority being never hinged. Catalogue values alone do not reflect the true rarity of such stamps. More recent issues show elusive printings, surcharge and perforation errors. This is followed by an extensive selection of airmails with world-class rarities and inverted overprints, as well as a comprehensive showing of the 1931 part-perforated errors.

The Canada collection is equally desirable, beginning with lightly cancelled Pence issues and choice mint Large and Small Queens, continuing with a phenomenal assemblage of 1897 Diamond Jubilee to the 1908 Quebec Tercentenary. I think you will agree that this section has never been surpassed.

If all of the above is not enough, a review of the Admiral Issue quickly reveals that it was the favourite of this collector. Stunning singles, multiples and booklet panes as well as a fabulous offering of lathework examples are among the many highlights. Coil issues and war tax stamps also receive comprehensive coverage.

The majority of lots have recent certificates. Only a few more recent acquisitions were sent for graded certificates. However, it is obvious from a quick review of the illustrations that there are literally dozens of items that would achieve certificates graded from 95 to 100.

It was a pleasure lotting and studying this collection; I hope we haven't worn out too many superlatives in the descriptions. All lots are listed with the current Unitrade price, even though many will undoubtedly bring multiples of catalogue value. We expect many price records will have been set when the dust has finally settled.

Highlights



Lot 3



Lot 7



Lot 32



Lot 58



Lot 43

Provinces & Newfoundland

(Lot 1 - 187)



Lot 61



Lot 117



Lot 140



Lot 149



- 1 ★ **NEW BRUNSWICK #6-11, 1860 1c-17c "Cents" Issue** An attractive and well selected set of six with fresh colours, 2c and 5c are unused, 17c mint LH, others are NH with the 10c naturally short gummed, the 12½c is a VF NH gem with 1997 Greene cert. The nicest set we have ever offered, VF-XF **740.00**



- 2 ★ **NOVA SCOTIA #8-13, 1860-1863 1c-12½c "Cents" Issue** An unusually well centered set of six on white paper, plus a 12½c on yellowish, 5c and 12½c on white paper are unused, all others are NH. In addition there is a 1c with dramatic misperforation error (NH). Selected quality, VF-XF (Unitrade \$715+) **Est. 400.00**



- 3 ★ **NOVA SCOTIA #10c, 1860-1863 5c Dark Blue on White Wove Paper, Perf 12** An exceptional mint example, superbly centered for this notoriously difficult stamp, deep rich colour and sharp impression on fresh wove paper, possessing full original gum that has never been hinged. An exceedingly rare stamp in this quality, and certainly one of the finest known examples extant, XF NH GEM, 2006 Greene cert. **2,000.00**



- 4 ★ **NOVA SCOTIA #12i, 1860-1863 Vermilion on White Wove Paper** Scarce mint example showing a clear horizontal stitch watermark, lovely fresh colour and with full original gum, never hinged. VF NH, 2004 Greene certificate for a block of twelve from which it originates. **375.00**

PRINCE EDWARD ISLAND



- 5 ★ **#1, 1861 2p Dull Rose on Yellowish Wove Paper, Perf 9** A most appealing mint example of this difficult early classic stamp, unusually well centered and with intact perforations, lovely fresh colour and impression, possessing large part original gum. Rarely offered in such nice quality, VF OG, 1995 Greene cert. **1,600.00**



- 6 ★ **#2, 1861 3p Blue on Yellowish Wove Paper, Perf 9** A remarkable mint example, amazingly well centered and with intact perforations, brilliant fresh colour and possessing full original gum, very lightly hinged, XF VLH, 1977 PF and 1996 Greene certificates. **3,000.00**

WITHOUT ANY DOUBT THIS STAMP RANKS AMONG THE FINEST IN EXISTENCE, WITH COLOUR, PERFORATIONS, CENTERING AND ORIGINAL GUM THAT ARE ALL CONSIDERABLY SUPERIOR TO THE MAJORITY OF STAMPS THAT WE HAVE HANDLED.



- 7 ★ **#3, 1861 6p Yellow Green on Yellowish Wove Paper, Perf 9** An impressive unused example with superior centering and full intact perforations, lovely fresh colour and clear impression on fresh wove paper. A wonderful stamp for the meticulous collector and ideal for exhibition, VF-XF, 1994 Greene cert. **2,500.00**

FROM OUR PAST EXPERIENCE THIS STAMP RANKS AMONG THE TOUGHEST OF ALL CLASSIC STAMPS OF BRITISH NORTH AMERICA TO OBTAIN IN SOUND CONDITION.



- 8 ★ **#4, 1863 1p Yellow Orange on White Wove Paper, Perf 12** A fabulous mint example of this elusive stamp, very well centered within unusually large margins, sheet margin at foot, gorgeous fresh colour, full streaky original gum that may be never hinged, one of the nicest examples we have seen, a grossly undercatalogued stamp, XF GEM **50.00**



9



10

- 9 ★ **#5, 1865 2p Rose on Bluish Wove Paper, Perf 12** A stunning mint single, extremely well centered within massive margins, lovely fresh colour and full original gum, never hinged. Virtually impossible to improve upon. An eye-catching stamp, catalogue value is irrelevant, XF NH JUMBO **21.00**
- 10 ★ **#5f, 1865 2p Rose on Bluish Wove Paper, Perf 12** An impressive positional mint example showing the prominent "TWC" plate variety (Position 54), very well centered within enormous margins, gorgeous fresh colour and impression and with full pristine original gum, never hinged. Hard to find a finer example of this interesting variety, XF NH GEM **140.00**



11



12

- 11 ★ **#5iii, 1865 2p Rose on Bluish Wove Paper, Perf 12** Post office fresh mint horizontal pair showing extra vertical line of perforations between stamps, full pristine original gum, never hinged. Rarely seen, as Fine NH, 1997 Greene cert. **700.00**
- 12 ★ **#5v, 1865 2p Rose on Bluish Wove Paper, Perf 12** Well centered horizontal mint pair, imperforate vertically between left sheet margin and stamp, fresh and with full original gum, slight gum disturbance spot on left stamp, scarce, VF, 1997 Greene cert. **250.00**
- 13 ★ **#6, 1865 3p Blue on Bluish White Wove Paper, Perf 11½-12** Pristine fresh and unusually well centered mint full sheet of thirty, showing three different constant plate varieties: "I" in "ISLAND" is a reversed L (Position 12); broken "R" in "THREE" (Position 16); and broken "D" in "ISLAND" (Position 22), full original gum, never hinged. Scarce so nice, VF NH **(Not Illustrated) 840.00**



14



15

- 14 ★ **#7a, 1866-1867 6p Blue Green on Yellowish Wove Paper, Perf 11½-12** Superbly centered mint example with four extra large balanced margins, gorgeous fresh colour and impression, possessing full original gum, never hinged. Rarely encountered in such top-quality, XF NH GEM, 1993 Greene certificate for a block of four, this being the upper right stamp. **450.00**
- 15 ★ **#7aii, 1862-1865 6p Blue Green, Perf 11½-12** Mint single imperforate vertically between stamp and sheet margin at left, crease in sheet margin, some light perf toning not mentioned in certificate, a rare item of which only 10 exist, VF OG, 2005 Greene cert. **500.00**



16



-17-



- 16 ★ **#8, 1866-1867 9p Violet on Yellowish Wove Paper, Perf 11½-12** A fabulous mint example, very well centered within remarkably large margins, brilliant colour and clear impression on fresh paper, possessing full original gum, never hinged. A very tough stamp to obtain in such high-quality, XF NH GEM, 1993 PSE cert. **300.00**
- 17 ★ **#9, 9a, 1862 4p Black on Yellowish Wove Paper, Perf 12** Lower left sheet corner mint example and 1865 4p black on white wove paper, perf 12, both exceptionally well centered and fresh, with full pristine original gum, never hinged. Seldom seen duo in top-quality, XF NH **56.00**



- 18 ★ **#9avi + variety, 1862 4p Black on Yellowish Wove Paper, Perf 11½-12** An attractive and well centered mint horizontal strip of three, sheet margin at left, imperforate vertically between stamps and showing a prominent white dash through rosette left of value tablet (Position 18; unlisted in Unitrade specialized catalogue and not identified in accompanying certificate), full brownish original gum, never hinged. A most appealing and rare item showing a distinctive positional plate variety, VF NH, 2008 Greene cert. **2,250.00**



19



21

- 19 ★ #9aviii, 1862 4p Black on Yellowish Wove Paper, Perf 12 Well centered and fresh mint example, imperforate vertically between sheet margin at left and stamp, full pristine original gum, never hinged, very scarce so nice, VF NH, 2005 Greene cert. **375.00**



- 20 ★ #9e, 1865 4p Black on Bluish White Wove Paper, Perf 12 Nicely centered and fresh mint horizontal pair, imperforate vertically between stamps, full original gum, never hinged. Seldom seen, VF NH, 1997 Greene certificate. **300.00**
- 21 ★ #9iv, 1865 4p Black on Bluish White Wove Paper, Perf 12 Nicely centered mint example, imperforate vertically between stamp and sheet margin at right, full original gum, scarce, VF NH **225.00**



22



23



24

- 22 ★ #11v, 1872 1c Orange, Perf 11½-12 Unusually well centered mint single, imperforate horizontally between stamp and sheet margin at foot, lovely fresh colour and with full original gum, scarce so nice, VF NH (Catalogue valuation as fine only). **350.00**
- 23 ★ #11vi, 1872 1c Brown Orange, Perf 12 Attractive mint single, imperforate vertically between stamp and right sheet margin, deep rich colour and nicely centered with full original gum, never hinged, scarce so nice, VF NH (Catalogue valuation as fine only). **350.00**
- 24 ★ #11vii, 1872 1c Brown Orange, Perf 11½-12 An impressive lower right sheet corner mint example, imperforate between stamp and margin from both sheet margins, deep fresh colour and full original gum, slight natural uneven gumming at foot mentioned for strict accuracy. A rarely seen (and perhaps unique) positional perforation variety, VF NH, photocopy of 1997 Greene certificate for a corner block. **875.00**



25



26

- 25 ★ **#12, 1872 2c Ultramarine, Perf 12** A nicely centered mint example of this tremendously difficult stamp, full original gum, never hinged. Rarely offered in such quality and grossly undervalued, VF NH **60.00**
- 26 ★ **#14iii, 1872 4c Green, Perf 12** Fresh and reasonably centered mint example, imperforate horizontally between stamp and sheet margin at foot, full original gum, never hinged, scarce, F-VF NH (Catalogue valuation as fine only). **350.00**
- 27 ★ **Balance of Mint Issues** Includes a total of 12 stamps with mint NH #5, 6, 11, 13i, 14, 15, 16, also mint LH #10, 10i, 12var. with broken "E" in "CENTS" (2005 Greene cert.), and 13d. Chiefly with VF centering (Unitrade \$795.) *(Not Illustrated)* **Est. 350.00**

NEWFOUNDLAND
PENCE



- 28 ★ **#1, 1857 1p Brown Violet on Thick Porous Wove Paper With Mesh, Imperforate** A selected mint single with full even margins, gorgeous fresh colour and razor-sharp impression on pristine fresh paper, possessing full white original gum, never hinged. A premium example of Newfoundland's First Stamp, XF NH, 2009 Greene cert. **450.00**



29



30

- 29 ★ **#11A, 1860 3p Green on Medium Hard Wove Paper, No Mesh, Imperforate** Gorgeous fresh mint pair with full even margins all around, brilliant shade and impression with full original gum, never hinged, choice, XF NH, 2009 Greene cert. **600.00**
- 30 ★ **#11A, 1860 3p Green on Medium Hard Wove Paper, No Mesh, Imperforate** A fresh mint pair with large margins around, gorgeous colour and deep impression on a thicker paper than normally encountered, with full original gum, never hinged. Attractive and VF NH, 2009 Greene cert. **600.00**



31



34

- 31 ★ **#12A, 1860 5p Violet Brown, Imperforate** A beautiful mint block of four with gorgeous fresh colour and clear impression, full margins around, full original gum, very light hinge mark on upper right stamp, others are never hinged, VF **840.00**



32



33

- 32 ★ **#17, 1861-1862 2p Rose, Imperforate** An outstanding mint example of this notoriously difficult stamp, full sheet margin at top with extra large margins on other sides, bright fresh colour and clear impression, possessing full original gum, never hinged. A superb stamp in all respects. In our experience the Two-pence rose is the scarcest of all 1861-1862 Pence issues in this quality, XF NH GEM, 2006 Greene cert. for a strip of three, this being the left stamp. **800.00**
- 33 ★ **#18, 1861-1862 4p Rose on Medium Hard Paper, Imperforate** Selected mint block of four with sheet margin at top, full margins, brilliant fresh colour and full original gum, never hinged. A nice block in premium quality, XF NH **400.00**
- 34 ★ **#19, 1861-1862 5p Reddish Brown on Soft Medium Paper, Imperforate** An attractive mint block of four, sheet margin at left, gorgeous fresh colour and with large margins around, full original gum hinged in margin only, all stamps never hinged. A nice block, VF **800.00**



- 35 ★ #19a, 1861-1862 5p Orange Brown on Hard Wove Paper, Imperforate Brilliant fresh and choice mint example with full margins, possessing full original gum, never hinged. A nice stamp, VF+ NH, 2009 Greene cert. **240.00**



- 36 ★ #20, 20ii, 1861-1862 6p Rose on Thin Hard Paper, Imperforate Two choice mint blocks of four (one showing papermaker's watermark "WISE"), both with lovely fresh colour, full margins and full original gum, never hinged. An attractive duo, VF NH **640.00**



37



38

- 37 ★ #21, 1861-1862 6 1/2p Rose on Thin Hard Paper, Imperforate A choice mint example with full margins all around, lovely fresh colour and with full original gum, never hinged, XF NH **240.00**
- 38 ★ #21i, 1861-1862 6 1/2p Rose on Thin Hard Paper, Imperforate Lower left corner block showing large portion of papermaker's watermark "CEY W / 1858", full original gum hinged in selvage only, all stamps never hinged. A scarce watermarked multiple in choice quality, VF NH **1,440.00**



39



40

- 39 ★ **#22i, 1861-1862 8p Rose on Thin Hard Paper, Watermarked, Imperforate** A remarkable mint example from the lower left sheet corner, gorgeous bright colour on fresh paper, showing papermaker's watermark "18" of "1858 / STACEY WISE", full original gum, stamp never hinged. A beautiful stamp in choice condition, XF NH, 2005 Greene cert. **360.00**
- 40 ★ **#23 + variety, 1861-1862 1sh Deep Rose on Thick Wove Paper, Imperforate** A superb upper right corner mint example, large margins on other two sides, deep colour and full original gum, never hinged. A nice stamp for the advanced collector, XF NH GEM, 2007 Greene Foundation certificate for strip of four, this being the right stamp. Catalogue value is for the regular printing; first printing is considerably scarcer. **100.00**

CENTS



41



42

- 41 ★ **#24, 1870 2c Green on Stout White Wove Paper, Perf 12** An exceptionally well centered mint example with full intact perforations, balanced margins, lovely fresh colour and sharp impression, full original gum, lightly hinged. A very difficult stamp to find in such superior quality, XF LH, 1994 Greene cert. **100.00**
- 42 ★ **#24a, 1865 2c Yellow Green on Thin, Crisp Wove Paper, Perf 12** A precisely centered mint example of this elusive early printing, fresh colour and possessing full original gum that is relatively lightly hinged. Without any of the flaws and gum problems which plagues this issue. A challenging stamp to obtain in choice quality, XF LH, 1994 Greene cert. **150.00**



- 43 ★ **#25, 1865 5c Brown on Thin, Crisp Wove Paper, Perf 12** An impressive mint example with near-perfect centering, four unusually well balanced large margins, much larger than normally encountered, deep rich colour on fresh paper, full original gum, lightly hinged. Without any doubt, this is the **FINEST EXAMPLE** we have seen of this terribly difficult stamp, a rarity in this quality, XF LH GEM, 1993 PF cert. **700.00**



44

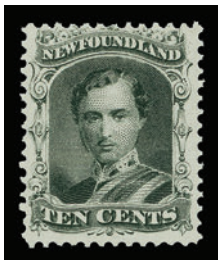


45



46

- 44 ☉ **#25, 1865 5c Brown on Thin, Crisp Wove Paper, Perf 12** A superior used example of this early perforated stamp, very well centered within large margins, showing portion of plate imprint at left, neatly cancelled by light oval mute grid cancellation in black, much nicer than usually seen, XF, 1993 Greene cert. **475.00**
- 45 ★ **#26, 1868 5c Black on Stout White Wove Paper, Perf 12** Lovely fresh mint example, very well centered for the issue with perforations clear of design on all four sides, sharp impression and possessing large part original gum, VF OG, 1996 Greene cert. **600.00**
- 46 ☉ **#26, 1868 5c Black on Stout White Wove Paper, Perf 12** A marvelous used example, exceptionally well centered within uncharacteristic large margins, deep colour and crisp impression on fresh paper, light centrally struck three-ring concentric rings cancellation in black. Rarely encountered in such top-quality, XF GEM, 1998 Greene cert. **250.00**



47



48

- 47 ★ **#27, 1871 10c Black on Stout White Wove Paper, Perf 12** Post office fresh mint example with full perforations, brilliant colour on fresh paper, possessing full pristine original gum, never hinged, without the usual gum bends usually seen on this value, VF NH, 2004 Greene certificate for a block, this stamp being the lower left stamp. **1,350.00**
- 48 ★ **#27, 1871 10c Black on Stout White Wove Paper, Perf 12** An outstanding mint example, unusually well centered within massive margins, good colour and clear impression on fresh paper, possessing full original gum that is relatively lightly hinged. Virtually impossible to improve upon, XF LH GEM, 1994 Greene cert. **450.00**



- 49 ★ **#27a, 1865 10c Black on Thin, Crisp Wove Paper, Perf 12** A nicely centered mint single, typical narrow margins, perforations clear of design on all four sides, deep rich colour on fresh paper, faint fingerprint on gum mentioned for the record. A rare stamp to find in outstanding quality, considerably scarcer than the 1871 re-issue, VF NH, clear 1994 Greene cert. **1,650.00**



50



51

- 50 ★ #28, 1870 12c Pale Red Brown on Stout White Wove Paper, Perf 12 A superbly centered mint example, lovely fresh colour, possessing full original gum, never hinged. A difficult stamp, grossly undervalued in such quality, XF NH, 1992 PSE cert. **240.00**

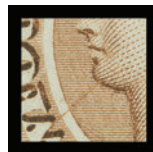
- 51 ◎ #28a, 1865 12c Pale Red Brown on Thin, Crisp Wove Paper, Perf 12 Seldom seen used example, quite well centered for the issue and with light segmented cork cancellation, VF, 2005 Greene cert. **250.00**



52



53



- 52 ★ #29, 1894 12c Brown on Medium Wove Paper, Perf 12 An exceptionally well centered mint example, post office fresh colour and sharp impression on fresh white paper, possessing full pristine original gum, never hinged. A beautiful stamp in top quality, XF NH GEM, 1991 Greene cert. **240.00**

- 53 ★ #29i, 1894 12c Brown on Medium Wove Paper, Perf 12 A desirable mint example, superbly centered for this stamp and showing the prominent "Chin Strap" plate variety (Position 68), gorgeous fresh colour and razor-sharp impression, full immaculate original gum, never hinged. Choice and easily the nicest example we have seen of this elusive plate variety, XF NH, 1995 Greene certificate for a block of four, this being the lower right stamp. **600.00**



54



55

- 54 ★ #30, 1865 13c Orange on Thin, Crisp Wove Paper, Perf 12 Post office fresh mint example, well centred within typical narrow margins, perforations clear of design on all four sides, lovely bright colour and impression on fresh paper and possessing full original gum, never hinged. VF NH, 1992 Greene cert. **900.00**

- 55 ★ #31, 1865 24c Blue on Thin, Crisp Wove Paper, Perf 12 An unusually well centered mint example of this notoriously difficult stamp, deep rich colour and sharp impression, possessing full immaculate original gum, never hinged. Choice and seldom encountered in such quality, XF NH, 1991 Greene cert. **210.00**



- 56 ★ #31, 31i, 1865 24c Blue on Thin, Crisp Wove Paper, Perf 12 An impressive upper right corner mint block of eight, top row with oversized margin at top, full plate imprint above position 8, also including the elusive Major Re-entry (Pos. 9), quite well centered for this difficult stamp and with full original gum, six stamps are hinged, lower left pair mint NH. A wonderful multiple for exhibition, VF OG (Catalogue value is for singles only; no premium added for the plate variety) 2008 Greene cert. **840.00**



- 57 ★ #32, 1868 1c Violet on Thin, Crisp Wove Paper (First Engraving), Perf 12 An impressive mint example, very well centered within large margins, post office fresh colour and sharp impression on fresh paper, intact perforations and with full original gum, never hinged. A premium quality stamp that is rarely offered, catalogue valuation irrelevant, XF NH GEM, 2005 Greene certificate for a lower left corner block, this being the lower right stamp. **300.00**



- 58 ★ #32A, 1871 1c Brown Lilac on Medium White Wove Paper (Re-engraved), Perf 12 A remarkable mint NH example, very well centered for this issue, lovely bright colour on fresh wove paper, intact perforations and possessing full white original gum that has been never hinged. This stamp is one of the most difficult of all Newfoundland to acquire in NH condition and to the best of our knowledge this particular example is the FINEST KNOWN, catalogue valuation for such a stamp is irrelevant. VF NH GEM, 2008 Sismondo and 2009 Greene certificates. **600.00**



59



60

- 59 ★ **#33, 1870 3c Vermilion on Medium White Wove Paper, Perf 12** A well centered mint single, vivid colour fresh white paper, original gum with small hinge remnant and owner's mark. VF OG, 1994 Greene cert. **1,000.00**
- 60 ◎ **#33, 1870 3c Vermilion on Medium White Wove Paper, Perf 12** A superb used example, exceptionally well centered within oversized margins, unusually deep rich colour for this stamp, nice St. John's cork in steel ring cancellation in black. The quality of this example would be virtually impossible to improve upon, XF GEM, 2005 Greene cert. **250.00**



- 61 ★ **#34, 1873 3c Blue on Medium White Wove Paper, Perf 12** A superlative mint example, precisely centered within balanced margins, luxuriant fresh colour and clear impression on fresh wove paper, full intact perforations and possessing full pristine original gum that has never been hinged. A superb stamp in all respects, and worthy of the finest collection, XF NH GEM, 2005 Greene cert. **2,000.00**

A TRULY REMARKABLE STAMP IN TERMS OF CENTERING, FRESHNESS AND FULL PRISTINE ORIGINAL GUM.



62



63

- 62 ★ **#36, 1894 6c Carmine Lake, Perf 12** A choice and very well centered strip of three with full plate imprint in top margin, fresh with full original gum, lightly hinged in selvage only, stamps never hinged. Seldom seen so nice, XF (Catalogue valuation is for singles only). **450.00**
- 63 ★ **#36, 1894 6c Carmine Lake, Perf 12** Precisely centered mint example, gorgeous colour on pristine fresh paper and possessing full original gum, never hinged, choice, XF NH **150.00**



- 64 ★ **#37, 1877 1c Brown Lilac on Medium Wove Paper (Re-engraved), Rouletted** A remarkable mint example of this elusive stamp, very well centered for the issue, combining lovely bright colour and sharp impression on fresh wove paper, possessing full unblemished original gum that has never been hinged. A most difficult stamp to obtain in such top quality and grossly under-catalogued, XF NH GEM, 2006 Greene certificate for a mint block of ten from which this originates. **800.00**
- 65 ◎ **#37, 1877 1c Brown Lilac on Medium Wove Paper (Re-engraved), Rouletted** Superb used example, precisely centered within large margins, used with fancy "leaf" cancellation in black, XF GEM, 2005 Greene cert. *(Not Illustrated)* **70.00**



- 66 ★ **#38, 1879 2c Green on Medium Wove Paper, Rouletted** A superior mint example, extremely well centered, luxuriant rich colour and sharp impression on fresh wove paper, possessing full pristine original gum that has been never hinged, rarely seen so nice, XF NH, 1994 PSE certificate for an horizontal mint pair from which this originates. **1,200.00**



- 67 ★ **#39, 1877 3c Blue on Medium Wove Paper, Rouletted** An impressive mint example of this notoriously difficult stamp, very well centered for the issue with large margins, post office fresh colour and clear impression on bright white wove paper, with full pristine original gum, never hinged. A superb stamp in all respects and ideal for the meticulous collector, XF NH GEM, 1996 PSE certificate for a horizontal strip of three, this being the centre stamp. **2,200.00**

Fax your Bid(s) toll free in North America
Dial 1(888) 867-8267



- 68 ★ **#40, 1876 5c Blue on Medium Wove Paper, Rouletted** Exceptionally well centered mint example within large margins, brilliant colour and clear impression on fresh wove paper, possessing full unblemished original gum, never hinged. Very scarce in such top quality, XF NH GEM, 1993 Greene cert. **1,050.00**



69



70

- 69 ★ **#41, 1880 1c Dull Violet Brown, Perf 12** A mathematically centered mint example of very difficult early printing, intact perforations with lovely pastel-like colour and impression, possessing full original gum, never hinged. Rarely encountered in such superior quality and missing from most advanced collections, XF NH, 1994 Greene cert. **240.00**
- 70 ★ **#43, 1896 1c Brown (Re-Issue), Perf 12** A superb mint example of this seldom seen stamp, full intact perforations, nicely centered with balanced margins, deep rich colour and possessing full immaculate original gum, never hinged. A great stamp in all respects and worthy of the finest collection, VF NH, 2007 Greene certificate for a mint block of four, this being the upper right stamp. **525.00**



71



72

- 71 ★ **#44, 1887 1c Deep Green, Perf 12** A stunning mint example from the upper right sheet corner, well centered within enormous margins, uncharacteristic for the issue, deep rich colour and possessing full original gum, never hinged. Catalogue value is irrelevant for such an impressive stamp, VF NH JUMBO, 2007 Greene cert. **75.00**
- 72 ★ **#45, 1896 1c Green (Re-Issue), Perf 12** Exceptionally well centered mint example with fresh, vibrant colour, deep impression and possessing full original gum, never hinged. XF NH GEM **75.00**



73



74



75

- 73 ★ **#46, 1882 2c Yellow Green, Perf 12** Very well centered mint example of this challenging stamp, lovely fresh colour, typical uneven original gum that has never been hinged. A tough stamp, VF NH, 1993 Greene cert. **240.00**
- 74 ★ **#47, 1896 2c Green (Re-Issue), Perf 12** An extremely well centered mint example, full original gum, never hinged. A choice stamp, seldom seen so nice, XF NH, 1996 Greene cert. **420.00**
- 75 ★ **#48, 1887 2c Orange, Perf 12** A marvelous mint example, well centered within jumbo margins, lovely bright shade and clear impression on fresh paper, possessing full pristine original gum, never hinged. A superb stamp, XF NH GEM, 2009 Greene cert. **150.00**



76



77

- 76 ★ **#49, 1880 3c Dull Blue, Perf 12** Very well centered mint example with large margins, gorgeous pastel-like colour on fresh paper, full original gum, very lightly hinged. Difficult to obtain in nice condition, XF VLH, 1992 Greene cert. **90.00**
- 77 ★ **#49b, 1896 3c Deep Blue (Re-Issue), Perf 12** A most attractive and post office fresh mint example with rich colour and clear impression, superior centering and possessing full pristine original gum, never hinged. Seldom seen so nice, XF NH, 2007 Greene certificate (sheet margin at right has since been removed). **300.00**



78



79



81

- 78 ★ **#51, 1887 3c Umber Brown, Perf 12** A fresh mint example, very well centered with gorgeous fresh colour and full original gum, never hinged. A choice stamp, VF NH, 2004 Greene cert. **150.00**
- 79 ★ **#51a, 1887 3c Brown, Perf 12** Very well centered mint example of this elusive stamp, rich colour and deep impression, with large part original gum, VF OG, 2004 Greene cert. **50.00**



80



83

- 80 ★ **#51ii, 1887 3c Umber Brown, Perf 12** Right sheet margin vertical mint pair showing extra horizontal line of perforations at top and between stamps, tiny portion of plate imprint at top, minor tone spot at extreme top, otherwise fresh and with full original gum, never hinged. A very scarce and striking pair, Fine NH **500.00**
- 81 ★ **#52, 1896 3c Violet Brown (Re-Issue), Perf 12** An exceptional mint example, precisely centered within large margins, gorgeous bright colour and clear impression on fresh paper, possessing full pristine original gum, never hinged. Rarely encountered in such premium condition, XF NH GEM, 1992 Greene cert. *(Illustrated on Page 21)* **450.00**



- 82 ★ **#53, 1880 5c Pale Blue, Perf 12** An elusive and choice mint example of this first printing, well centered with gorgeous pastel colour on pristine paper, possessing full white streaky original gum characteristic of the issue, never hinged. A key stamp of the 1880-1896 "Cents" issue, VF NH, 1972 BPA and 2006 PF certificates for a mint block of four, this example being the lower right stamp. **2,000.00**
- 83 ★ **#55, 1894 5c Bright Blue, Perf 12** A choice and well centered lower right sheet corner mint block of four with full sheet margins, lovely fresh colour and with full original gum, light hinge mark at top, bottom pair naturally short gummed and never hinged, VF+, 2008 Greene cert. (Catalogue valuation as hinged only). **240.00**
- 84 ★ **#55, 1894 5c Bright Blue, Perf 12** An extremely well centered mint example with lovely post office fresh colour and possessing full pristine original gum, never hinged. A superb stamp in all respect, XF NH GEM, 1992 Greene cert. *(Illustrated on page 23)* **180.00**



84



85

- 85 ★ **#57, 1896 ½c Orange Red (Re-Issue), Perf 12** An exceptional mint example of this difficult stamp, nicely centered with large margins, lovely fresh colour and impression, full original gum, never hinged. Seldom seen so nice, XF NH, 1992 Greene cert. **300.00**



86



87



89

- 86 ★ **#59, 1887 10c Black, Perf 12** An attractive mint example, well centered within unusually wide margins, fresh colour and with full pristine original gum, never hinged. A choice stamp, VF NH JUMBO, 1994 Greene cert. **540.00**

- 87 ◎ **#59, 1887 10c Black, Perf 12** A stunning used example, very well centered within enormous margins, light barred cancellation in black, XF GEM, 2005 Greene cert. **80.00**



- 88 ★ **#59 + variety, 1887 10c Black, Perf 12** Horizontal upper margin mint strip of three showing full plate imprint, unusual extra vertical lines of perforations vertically, nicely centered and with full pristine original gum, never hinged. A visually appealing and rarely seen multiple showing a double perforation variety, VF NH, 2004 Greene cert. (Catalogue value as normal single stamps only) **1,620.00**



- 89 ★ **#59ii, 1887 10c Black, Perf 12** An extremely well centered mint example showing the scarce two lines through "CE" of "CENTS" variety (Position 18), rich colour and clear impression on fresh paper, possessing full immaculate original gum, never hinged. The nicest example of this elusive plate variety we have handled, XF NH, 2007 Greene cert. **1,050.00**



- 90 ★ #60, 1890 3c Slate Unusually well centered mint block of four, seldom seen on this notoriously difficult stamp, sheet margin at left, lovely fresh colour, natural gum skips on three stamps, VF NH
600.00



-91-



92

- 91 ★ #60a, 60c, 60d, 1890 3c Grey Lilac (Aniline Ink), Lilac and Slate Violet shades Well centered and choice mint, all with full original gum, never hinged. A difficult trio to find in such nice quality, VF NH
600.00
- 92 ★ #60d, 1890 3c Slate Violet Pristine and unusually well centered mint example with oversized margins, deep rich colour and possessing full unblemished original gum, never hinged. XF NH GEM, 2005 Greene cert.
300.00



- 93 ★ #61-74, 1897 1c-60c Discovery of Newfoundland Complete mint set of fourteen, each stamp carefully selected for better centering, fresh colours and with full original gum, never hinged. XF NH, key 35c value with 1995 Greene cert.
750.00

All lots are available for viewing on our website in high resolution.
www.easternauctions.com

1897 PROVISIONAL SURCHARGE



94



95

- 94 ★ #75, 1897 (October) 1c on 3c Grey Lilac, Type A Surcharge in Black Lovely fresh and well centered mint example with full original gum, choice, VF NH, 1992 Greene cert. **250.00**
- 95 ★ #76, 1897 (October) 1c on 3c Grey Lilac, Type B Surcharge in Black A well centered mint example with full original gum, lightly hinged, VF LH, 1994 Greene cert. **300.00**



96



97

- 96 ★ #76i, 1897 (October) 1c on 3c Grey Lilac, Type B Surcharge in Black An exceptionally well centered mint example with large margins, the elusive wide spacing (2mm) between "ONE" and "CENTS" (Position 41 in the setting of 50), full original gum, hinged. Rarely seen so nice, XF OG, 1996 PSE cert. **600.00**
- 97 ◎ #76i, 1897 (October) 1c on 3c Grey Lilac, Type B Surcharge in Black Unusually well centered example showing the wide spacing (2mm) surcharge between "ONE" and "CENTS" (Position 41 in the setting of 50), light unobtrusive barred cancel. A very scarce stamp with superior centering, XF, 2004 Greene cert. **600.00**



- 98 ★ #77, 1897 (October) 1c on 3c Grey Lilac, Type C Surcharge in Black A remarkable mint single, brilliant fresh colour and very well centered for this difficult stamp, possessing full original gum, never hinged. Very few Type C surcharge exist in such nice quality, missing from most advanced collections, VF NH, 1994 Greene cert. **3,000.00**



ROYAL FAMILY AND JOHN GUY



- 99 ★ #78-86, 1897-1901 ½c-5c Royal Family Complete mint set of eight stamps, plus extra shades: 1c deep green and 3c red orange; also includes the 2c Map. All stamps are equally well centered, many within large margins, full original gum, never hinged. Difficult set to assemble, XF NH **587.00**



- 100 ★ #79i, 1897 1c Carmine Rose on Thick Wove Paper Upper left corner mint example, well centered and fresh, full original gum, hinged in selvage only leaving stamp never hinged. A very scarce stamp and as nice as they come, XF NH, 2006 Greene cert. **600.00**



101



102

- 101 ★ #92Ai, 1910 6c Claret (Lithographed), Type II Precisely centered mint single with large margins, showing the elusive "WF" joined letters (Position 10), lovely fresh colour and with full original gum, never hinged. Undervalued, especially in such nice quality, XF NH, 1995 Greene cert. **300.00**
- 102 ★ #92ii, 1910 6c Claret (Lithographed), Type I A choice mint single imperforate vertically between stamp and sheet margin at left, fresh with full original gum, never hinged, the FINEST of the ten known examples, VF NH, 1995 Greene cert. **1,000.00**

Call us toll free in North America

Dial 1(800) 667-8267

or

Fax us 1(888) 867-8267



103



104



105

- 103 ★ #93, 1910 8c Pale Brown (Lithographed), Perf 12 Well centered and lovely fresh mint example with full original gum, never hinged, choice, VF+ NH, 2009 Greene cert. **250.00**
- 104 ★ #94, 1910 9c Olive Brown (Lithographed), Perf 12 Extremely well centered mint example with "post office" fresh colour and with full pristine original gum, never hinged. XF NH, 2009 Greene cert. **250.00**
- 105 ★ #95, 1910 10c Violet Black (Lithographed), Perf 12 A well centered and very fresh mint example, with full unblemished original gum, never hinged. A choice stamp, VF NH, 2009 Greene cert. **250.00**



106



107

- 106 ★ #96, 1910 12c Lilac (Lithographed), Perf 12 Very well centered and "post office" fresh mint example, with full original gum, choice, VF+ NH, 1997 Greene cert. **250.00**
- 107 ★ #97, 1910 15c Grey Black (Lithographed), Perf 12 Exceptionally well centered and choice mint example with brilliant fresh colour on pristine paper, with full immaculate original gum, never hinged. XF NH, 2009 Greene cert. **250.00**



- 108 ★ #98-103, 1911 6c-15c John Guy Issue (Engraved) Pristine fresh and exceptionally well centered mint set of six stamps, all with full immaculate original gum, never hinged. A sought-after and surprisingly difficult set to assemble, XF NH; the 10c, 12c and 15c with 1995 Greene certificates **1,350.00**



- 109 ☉ #98-103, 1911 6c-15c John Guy Issue (Engraved) A seldom seen used set of six, each with ideal strike of Island Cove split ring postmark (four different dates), each stamp well centered and with fresh colour, XF **520.00**



- 110 ★ #104-114, 1911 1c-15c Royal Family An exceptionally well centered complete mint set including the 8c peacock blue shade, all with pristine fresh colours and full original gum, never hinged (only the 9c is LH). A tough set to obtain in premium quality, XF (both 8c values with Greene certs.) **992.00**

TRAIL OF THE CARIBOU



- 111 ★ #115-126, 1919 1c-36c Trail of the Caribou Issue Complete mint set of twelve stamps; plus 2c carmine red shade, each stamp carefully selected for best possible centering, fresh colours and with full original gum, never hinged. An exceptional set, rarely encountered in this condition, XF NH **655.00**



112



113

- 112 ★ **#115, 1919 1c Green, Line Perf 14.1 x 13.9** Left centre sheet margin mint block of four, showing guidelines and plate "1", stamps are unusually well centered, lovely fresh colour and with full original gum, never hinged. An important and UNIQUE plate multiple, a wonderful showpiece, XF NH, 2009 Greene cert. Walsh #110b catalogue valuation. **1,650.00**
- 113 ★ **#124, 1919 15c Dark Blue** Lower right corner mint block, very well centered for the issue, with deep rich colour and full original gum, never hinged. It would be quite difficult to find a finer block of this key stamp, VF+ NH **420.00**

1920 PROVISIONAL SURCHARGES



114



115

- 114 ★ **#127a, 1920 (September 24) 2c on 30c Slate, Provisional Surcharge in Black** An extremely well centered mint single, large margins, showing the rare inverted surcharge error, only two sheets of twenty-five were printed, XF LH, 1999 PF and 2004 Greene certificates. **1,250.00**
- 115 ★ **#127ii, 1920 (September 24) 2c on 30c Slate, Provisional Surcharge in Black** An impressive mint horizontal pair showing a dramatic shift of the surcharge slanting to the right, as a result almost all of the surcharge is missing from the right-hand stamp, full original gum, never hinged. The accompanying certificate states: "... genuine but showing some adhesions from crystal mount", which quite frankly we are unable to see. A very rare and visually appealing pair for the specialist, XF NH, 2003 Greene cert. **2,100.00**



116



117

- 116 ★ #128, 1920 (September 13) 3c on 15c Scarlet, Type I Provisional Surcharge in Black Exceptionally well centered within balanced large margins, deep colour on fresh paper and possessing full original gum, never hinged. An elusive and sought-after stamp, rarely seen in premium quality, XF NH GEM, 1993 PF cert. **525.00**
- 117 ★ #128a, 1920 (September 13) 3c on 15c Scarlet, Type I Provisional Surcharge in Black Well centered mint example with the inverted surcharge error, fresh and with full original gum, lightly hinged, pencil signed H. Bloch on reverse, rare with only one sheet of twenty-five printed, VF LH, 1994 Greene cert. **3,000.00**



118



119

- 118 ★ #130a, 1920 (September 15) 3c on 35c Red, Provisional Surcharge in Black A choice and very well centered mint block of four (Position 9/15), with missing part of lower bar on lower left stamp and virtually all on lower right stamp, full pristine original gum, VF NH, 2008 Greene cert. **525.00**
- 119 ◎ #130a, 1920 (September 15) 3c on 35c Red, Provisional Surcharge in Black Well centered used example tied to piece by neat St. John's (SEP 22 1920) machine cancellation; lower surcharge bar COMPLETELY omitted (Position 15), rare thus as the majority show a small portion of the surcharge bar. A beautiful item for the advanced collector, VF **175.00**



- 120 ★ #130ii, 1920 (September 15) 3c on 15c Red, Provisional Surcharge in Black A desirable mint horizontal pair (Positions 19 and 20), showing the elusive missing "THREE" on left stamp (surcharge is never completely missing) and clipped "TS" of "CENTS" on right-hand stamp characteristic of Position 20; well centered within large margins and with full immaculate original gum, never hinged. A rare pair, ideal for exhibition and in all likelihood the finest known pair, VF NH, 1994 Greene certificate for a block of four from which this pair originates. **1,750.00**

PICTORIAL AND PUBLICITY



- 121 ★ **#131-144, 1923-1924 1c-24c Pictorial Issue** An attractive complete mint set of fourteen stamps, each with superior centering for the issue, lovely fresh colour and with full original gum, never hinged. A difficult set to find in choice quality, VF-XF NH **450.00**



- 122 ★ **#160i, 1929 (August) 3c on 6c Grey Black, Type I Provisional Surcharge in Black** Mint single with wide spacing (5mm) between "CENTS" and bar, well centered for the issue, fresh and with full original gum, never hinged. A very scarce stamp, VF NH, 1994 Greene cert. **2,800.00**



123



125



126

- 123 ★ **#163i, 1929-1931 1c Green (Re-engraved), No Watermark**, A premium mint example with unusually large margins, imperforate vertically between stamp and sheet margin at right, full original gum, never hinged, XF NH JUMBO, 1995 Greene cert. **400.00**
- 124 ★ **#165, 1929-1931 3c Deep Red Brown (Re-engraved), No Watermark** Upper right mint corner block showing plate "3" (sideways) at top, fresh with full original gum, never hinged. VF NH (Walsh 157g US\$220) *(Not Illustrated)* **Est. 150.00**
- 125 ★ **#165i, 1929-1931 3c Brown (Re-engraved), No Watermark** Well centered mint vertical pair, imperforate horizontally between stamp and sheet margin at foot, full original gum, VF NH **400.00**
- 126 ★ **#166i, 1929-1931 4c Magenta (Re-engraved), No Watermark** Well centered mint single, imperforate vertically between stamp and sheet margin at right, full original gum, scarce, VF LH **200.00**



- 127 ★ **#172-182, 1931 1c-30c Publicity Issue (Re-engraved), Watermarked** Gorgeous fresh mint set of eleven stamps, all with full original gum, never hinged. Selected centering, XF NH **600.00**
- 128 ★ **#173, 1931 2c Red (Re-engraved), Watermarked** A choice lower left corner mint block of four with plate "2" (sideways) in lower margin, seldom seen, VF NH (Walsh 166a US\$200) *(Not Illustrated)* **Est. 150.00**

1932 – 1937 RESOURCES



129



130

- 129 ★ **#183a + var., 1932-1937 1c Green (Perkins Bacon Printing), Watermarked, Line Perf 13.2** Attractive vertical mint pair with sheet margin at left, originating from the booklet sheet and showing wide gutter margin between stamps, full original gum, most unusual, VF NH **Est. 250.00**
- 130 ★ **#183c, 1932-1937 1c Green (Perkins Bacon Printing), Watermarked, Perf 13.3** Vertical mint pair, well centered and imperforate horizontally between, full original gum, VF NH **375.00**

Visit us online www.easternauctions.com

or

E-Mail us at easternauctions@nb.aibn.com



- 131 ★ #184b, 186b, 187b + variety, 1932-1937 1c, 2c & 3c Resources (Perkins Bacon Printing), Line Perf 14 small holes Set of three vertical pairs with gutter margin between stamps, all originating from uncut booklet sheets, full original gum, never hinged. Very scarce, VF NH; each value with 1998 Greene certificate. **Est. 750.00+**



- 132 ★ #185iii, 187v, 1932-1937 2c Rose (Perkins Bacon Printing), Line Perf 13.2 Mint single imperforate between stamp and sheet margin at top; also corner margin 3c orange brown line perf 13.2 mint single (originating from booklet sheet) imperforate between stamp and sheet margin at foot, couple staple holes entirely confined in selvage, both with full original gum, never hinged. A nice and striking duo, VF NH **375.00**



- 133 ★ #186d, 1932-1937 2c Green, Die II (Perkins Bacon Printing), Line Perf 14¼ Well centered mint horizontal pair, imperforate vertically between stamps, full original gum, VF NH, 1997 Greene cert. **300.00**



- 134 ★ #189d + 189d var., 1932 4c Rose Lake, Line Perf 14.3 Upper left plate "2" (reversed) perf. 14.1 block, plus another with the elusive line Perf 13.9 (this block was originally discovered by John Walsh and is so far the only reported example), former is lightly hinged in top selvage, latter with full original gum, never hinged. A very scarce duo, VF (Walsh 183 US\$405) **Est. 300.00**



- 135 ★ #191, 1932-1937 5c Deep Violet, Die II (Perkins Bacon Printing), Comb Perf 13½ Upper left sheet corner mint block of four showing lathework in gutter margin at left, fresh and well centered, light hinge mark in top selvage only, otherwise never hinged. An eye-appealing and seldom seen lathework multiple, VF **Est. 500.00**



136

- 136 ★ #191c, 1932-1937 5c Deep Violet, Die I (Perkins Bacon Printing), Watermarked, Perf 13½ Mint horizontal pair, imperforate vertically between stamps, fresh and with full original gum, seldom seen, VF NH, 2004 Greene cert. **450.00**



137

- 137 ★ #191g, 1932-1937 5c Deep Violet, Die II (Perkins Bacon Printing), Watermarked, Line Perf 14.4 Lower right sheet corner mint horizontal pair, imperforate vertically between stamps, fresh and with full original gum, scarce, VF+ NH, 2004 Greene cert. **450.00**



138

- 138 ★ #197c, 1932-1937 25c Grey (Perkins Bacon Printing), Watermarked, Perf 14.4 Well centered and fresh vertical mint pair, imperforate horizontally between stamps, with full original gum, seldom offered, XF NH **750.00**



139

- 139 ★ #208b, 1932 7c Red Brown (Perkins Bacon Printing), Watermarked, Perf 14 Well centered horizontal mint pair, imperforate vertically between stamps, with full original gum, VF NH **900.00**



- 140 ★ #210b, 1932-1937 24c Light Blue (Perkins Bacon Printing), Watermarked, Perf 13½ An impressive mint example showing a prominent double impression error, lovely fresh colour and nicely centered with full original gum, never hinged. Arguably the most sought-after rarity of the 1932-1937 Resources Issue and among the very few we have previously offered. A visually striking stamp for the advanced philatelist, VF NH, 1993 Greene cert. **3,000.00**



1933 GILBERT AND 1937 CORONATION



- 141 ★ #213b, 1933 2c Green, Perf 13½ A most attractive mint example showing a clear and well-defined double impression, much nicer than most we have seen, fresh and with full original gum, never hinged. Rarely offered with such a clear impression, VF NH, 1993 Greene cert. **1,600.00**



142



145

- 142 ★ #214iii, 1933 3c Yellow Brown Mint vertical pair, imperforate vertically between stamp and right sheet margin, light natural gum crease, mentioned for accuracy and of no importance for this scarce perforation error pair, VF NH **600.00**



- 143 ★ #217b-225a, 1933 7c-32c Gilbert Issue Nicely centered mint set of seven, the complete set in line perf 14, fresh colours and with full original gum, VF NH **625.00**



- 144 ★ #218a, 1933 8c Brownish Red, Perf 13½ Scarce mint single with the error of colour. Very nicely centered with vivid colour. VF NH, 1992 Greene cert. **900.00**
- 145 ★ #239a, 1937 15c Claret, Line Perf 13.7 Vertical mint strip of four, imperforate horizontally between second and third stamps, only the top stamp hinged, leaving central pair with perforation variety mint never hinged. A very scarce and appealing multiple, VF *(Illustrated on Page 36)* **1,400.00**

1941 – 1944 RESOURCES



- 146 ★ #255iii, 1941-1944 3c Rose Carmine (Waterlow Printing), Perf 12½ Left sheet margin horizontal mint pair, left stamp without watermark, hard to find, VF NH **150.00**



147



148

- 147 ★ #257ix, 1941 5c Violet, Die I, Comb Perf 13.5 An elusive mint example of the emergency printing, shows a Perkins Bacon perforation but is printed on a Waterlow paper, fresh with full original gum. A tough stamp to find, VF NH **150.00**
- 148 ★ #258i, 1942 7c Violet Blue (Waterlow Printing), Perf 12½ Left sheet margin horizontal mint pair, without watermark on left stamp, very scarce, VF NH, 2005 Greene cert. **375.00**

Fax your Bid(s) toll free in North America
Dial 1(888) 867-8267



AIRPOST



- 149 ★ #C1, 1919 (April 12) 3c Red Brown Hawker Flight Five-Line Overprint** An impressive mint example of this world airmail rarity, unusually well centered for the issue, bright colour and with clear impression of the special flight overprint, possessing full original gum, lightly hinged, signed "J. A. R." initials (Dr. J. Alex. Robinson, Postmaster-General) on reverse. A superb and well selected mint example of this famous and first Trans-Atlantic flight postage stamp, XF LH GEM **35,000.00**

Expertization: 1958 BPA and 1964 Bolaffi certificates

Provenance: Sir Gawaine Baillie (Sotheby's May 2006; Lot 608)

A WORLD CLASS AIRMAIL RARITY IN EXCEPTIONAL CONDITION. ONLY 200 STAMPS WERE OVERPRINTED AND NEARLY HALF WERE USED FOR FRANKING OF MAIL ON THE ATTEMPTED FLIGHT. AMONG THE MOST SOUGHT-AFTER AIRMAIL STAMPS OF THE WORLD.

ALCOCK AND BROWN FLIGHT



150



151

- 150 ★ #C2, 1919 (June 9) \$1 on 15c Scarlet Alcock and Brown Flight Well centered mint example within large margins, rich colour on fresh paper, with comma after "POST", full original gum, very faint hinge mark, XF VLH **300.00**

- 151 ★ #C2a, 1919 (June 9) \$1 on 15c Scarlet Alcock and Brown Flight Extremely well centered and post office fresh mint example, without comma after "POST", full original gum, a nice stamp, XF LH **330.00**



- 152 ★ #C2b, 1919 (June 9) \$1 on 15c Scarlet Alcock and Brown Flight Well centered mint single without comma after "POST" and without period after "1919" (Position 14 in the setting of twenty-five stamps), lovely fresh colour and with full original gum, never hinged. A scarce positional stamp, VF NH **1,100.00**



153



154

- 153 ★ #C2c, 1919 (June 9) \$1 on 15c Scarlet Alcock and Brown Flight Precisely centered mint example, without comma after "POST" and "A" of "AIR" under "a" of "Trans" (Position 22 in the setting of twenty-five stamps), lovely fresh colour and with full original gum, very lightly hinged, XF VLH, 1992 Greene certificate for a vertical pair, this being the lower stamp. **550.00**

- 154 ★ #C2ii, 1919 (June 9) \$1 on 15c Scarlet Alcock and Brown Flight Post office fresh and well centered mint example with small comma after "POST" (Position 20 in the setting of twenty-five stamps), full pristine original gum, never hinged, VF NH, 1993 Greene certificate for a block of four, this stamp being the lower right example. **1,100.00**



HALIFAX AIRMAIL



155



156

- 155 ★ #C3, C3b, 1921 (November 7) 35c Red Halifax Airmail Extremely well centered and fresh horizontal mint pair, both show the wide (2¾mm) spacing, left-hand stamp without and right-hand stamp with period after "1921", full original gum, very light hinge mark at centre top, XF VLH **425.00**
- 156 ◎ #C3d, 1921 (November 7) 35c Red Halifax Airmail Well centered used example with wide (2¾mm) spacing and "1" of "1921" below "f" of "Halifax" (Position 4), machine cancellation in black, scarce, VF, 1994 Greene cert. **600.00**



- 157 ★ #C3f, 1921 (November 7) 35c Red Halifax Airmail Superbly centered and lovely fresh mint single with narrow (1½mm) overprint spacing between "AIR" and "MAIL", no period after "1921", with full pristine original gum, never hinged. A choice stamp, XF NH **900.00**



158



161

- 158 ★ #C3h,ix, 1921 (November 7) 35c Red Halifax Airmail A striking mint example showing narrow (1½mm) spacing and with period after "1921", overprint dramatically shifted and slanting (ascending), stamp is well centered and fresh with full original gum, lightly hinged. A scarce and desirable airmail stamp for the advanced collector. Catalogue valuation is for the most common overprint type shifted, VF LH, 1992 Greene certificate. **550.00**

HALIFAX AIRMAIL INVERTED OVERPRINTS



- 159 ★ #C3i, 1921 (November 7) 35c Red Halifax Airmail A remarkable mint example with narrow (1½mm) spacing and period after "1921" inverted overprint and dramatically shifted, full original gum, Kessler guarantee handstamp and pencil signed H. Bloch on reverse, VF OG, 2004 Greene cert. **12,000.00**

Note: According to Dalwick and Harmer handbook (see page 64; 1953 edition) this single originates from the third (3) pane with overprint, its position being very low with horizontal perforations through "1921".

A VERY RARE HALIFAX INVERT, ONLY FOUR PANES OF TWENTY-FIVE STAMPS RECEIVED THE OVERPRINT INVERTED IN ERROR, THIS STAMP ORIGINATING FROM THE THIRD PANE IDENTIFIED BY DALWICK AND HARMER. ONLY SIXTEEN EXAMPLES SHOWING THIS OVERPRINT TYPE CAN EXIST.



- 160 ★ #C3i, 1921 (November 7) 35c Red Halifax Airmail A remarkable mint example with INVERTED OVERPRINT, showing narrow spacing between "AIR" and "MAIL" and with period after "1921", exceptionally well centered (as is the overprint) and fresh with full original gum, lightly hinged, XF LH GEM, 2009 Greene cert. **12,000.00**

Note: Only four panes received the inverted overprint and according to Dalwick and Harmer airmail handbook, any single stamp can be allocated to its original pane by the position of the overprint (1); its position being well centered vertically and horizontally.

A RARE MINT HALIFAX AIRMAIL STAMP SHOWING INVERTED OVERPRINT ERROR, ESPECIALLY DESIRABLE AS ONLY SIXTEEN OF THIS PARTICULAR OVERPRINT TYPE CAN EXIST.

- 161 ★ #C3j, C3b, 1921 (November 7) 35c Red Halifax Airmail Well centered mint vertical pair; top stamp with the sought-after narrow (1½mm) spacing and "1" of "1921" below "f" of "Halifax", bottom stamp with wide (2¾mm) spacing and with period after "1921" (Positions 5 and 10 in the setting of twenty-five stamps), lovely fresh colour and with full original gum, lower stamp never hinged. A scarce positional pair, XF OG *(Illustrated on Page 40)* **1,050.00**



DE PINEDO FLIGHT



- 162 ☉ **#C4, 1927 (May 21) 60c Black King Henry VII De Pinedo Flight Overprint, Perf 12** A marvelous used example of this famous airmail stamp, nicely centered with full intact perforations, deep colour on fresh paper, showing characteristic machine cancellation in use at the time of this special flight, choice Very Fine **25,000.00**

Expertization: 1957 Philatelic Foundation and 1993 Greene Foundation certificates

A VERY FINE USED EXAMPLE OF THIS WORLD-CLASS RARITY. A TOTAL OF 300 STAMPS WERE OVERPRINTED FOR THIS SPECIAL TRANS-ATLANTIC FLIGHT OF WHICH 225 COVERS WERE FLOWN TO EUROPE. A SOUGHT-AFTER AIRMAIL RARITY.

COLUMBIA FLIGHT



- 163 ★ **#C5, 1930 (September 25) 50c on 36c Olive Green Columbia Flight, Perf 14** A beautiful mint example of this rare airmail, well centered for this notoriously difficult stamp, lovely fresh colour with clear surcharge impression (Position 3 in the setting of four stamps), possessing full original gum, barely visible hinge mark, showing two different expertizing signatures in pencil on reverse, Very Fine **12,000.00**

Expertization: 1994 Greene Foundation certificate

A CHOICE MINT EXAMPLE OF THIS EARLY AIRMAIL STAMP WITH EXCEPTIONAL CENTERING FOR THE ISSUE. ONLY 300 STAMPS WERE OVERPRINTED, MANY OF WHICH WERE USED ON THE MAIL.



- 164 ★ #C6-C11, 1931 15c, 50c & \$1 Pictorial Issue, No Watermark and Watermarked Issues Both sets of three, selected well centered and fresh, each stamp with full pristine original gum, never hinged, a beautiful set in superb condition, XF NH 700.00



165



166

- 165 ★ #C6a, 1931 15c Brown, No Watermark, Perf 14 Nicely centered horizontal mint pair imperforate vertically between stamps, full original gum, lightly hinged, scarce, VF LH, 2009 Greene cert. 1,200.00
- 166 ★ #C6b, 1931 15c Brown, No Watermark, Perf 14 Well centered vertical mint pair imperforate horizontally between stamps, fresh and with full original gum, lightly hinged, seldom offered, VF LH, pencil signed Sergio Sismondo with his 2003 certificate. 1,200.00



- 167 ★ #C7a, 1931 50c Green, No Watermark, Perf 14 Nicely centered and fresh mint horizontal pair imperforate vertically between stamps, with full original gum, lightly hinged, very scarce, VF LH, 1997 Greene cert. 1,700.00



168



169

- 168 ★ #C7b, 1931 50c Green, No Watermark, Perf 14 Well centered mint vertical pair imperforate horizontally between stamps, lovely fresh colour and with full original gum, very scarce, VF OG, 1997 Greene cert. **1,700.00**
- 169 ★ #C8b, 1931 \$1 Blue, No Watermark, Perf 14 Nicely centered and fresh mint vertical pair imperforate horizontally between stamps, full original gum, hinged at top, very scarce, VF OG, 2009 Greene cert. **1,250.00**



- 170 ★ #C8var., 1931 \$1 Blue, No Watermark, Perf 14 An interesting mint horizontal pair, imperforate vertically between stamp and sheet margin at right, well centered, fresh and with full original gum, the variety stamp with wide jumbo margins, unlisted in Unitrade specialized catalogue, VF NH, 2003 Greene certificate for a block of four, this being the top pair. **Est. 750.00**



- 171 ★ #C10a, 1931 50c Green, Watermarked, Perf 14 A choice and well centered mint horizontal pair, sheet margin left and imperforate vertically between stamps, lovely fresh colour and with full original gum, never hinged. A very scarce item, VF NH, 2009 Greene cert. **1,800.00**



- 172 ★ #C10a, 1931 \$1 Blue, Watermarked, Perf 14 Well centered and fresh mint vertical pair imperforate horizontally between stamps, full original gum, scarce, VF LH, 2006 Greene cert. 1,200.00



173



174

- 173 ★ #C12, 1932 (May 19) \$1.50 on \$1.00 Blue Dornier DO-X Flight Selected mint example, well centered within large margins, full original gum, never hinged, VF NH, 1994 Greene cert. 800.00
- 174 ★ #C12i, 1932 (May 19) \$1.50 on \$1 Blue Dornier DO-X Flight Nicely centered and fresh mint single showing the elusive slanting surcharge variety, full original gum, lightly hinged. VF LH, 1994 PSE cert. 900.00



- 175 ◎ #C12i, 1932 (May 19) \$1.50 on \$1 Blue Dornier DO-X Flight Precisely centered used example showing a slightly slanting surcharge, usual slogan cancellation. VF, 1994 PSE cert. 800.00

Have you been thinking of selling your collection?
Call us 1(800) 667-8267 ask for Gary J. Lyon.
Give your collection the attention it deserves.
Consign your stamps to Eastern Auctions Ltd.



X176



177

- 176 ★ **#C13-C17, 1933 5c-75c "Labrador" Airmail Issue** A well centered mint set of five, all with full original gum, never hinged, VF-XF NH **445.00**
- 177 ★ **#C13b, 1933 5c Light Brown, Watermarked, Perf 14¼** A choice and nicely centered mint horizontal pair imperforate vertically between stamps, lovely fresh colour and possessing full original gum, never hinged. A very scarce pair, VF NH, 2004 Greene cert. **2,400.00**



178



179

- 178 ★ **#C13c, 1933 5c Light Brown, Watermarked, Perf 14¼** Well centered vertical mint pair, sheet margin at right, imperforate horizontally between stamps, full original gum, lightly hinged, very scarce and missing from most advanced collections, VF+ LH, 2004 Greene cert. **1,600.00**
- 179 ★ **#C13ii, 1933 5c Light Brown, Watermarked, Perf 14¼** A well centered mint example with sheet margin at right, imperforate vertically between stamp and sheet margin, full original gum, never hinged. A scarce and appealing item, as only a few exist, VF NH, 1994 Greene cert. **450.00**



- 180 ★ **#C14i, 1933 10c Pale Yellow Shade, Watermarked, Perf 11½** Very scarce mint single with error of colour "Indian-yellow", well centered, VF OG, 1994 PSE cert. **5,000.00**



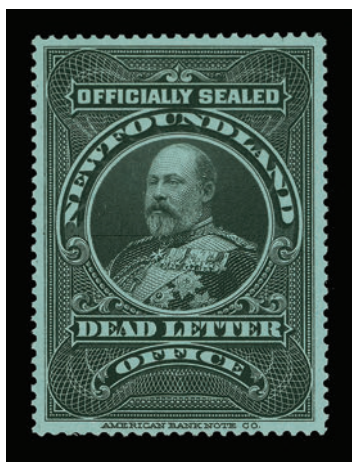
181



182

- 181 ★ **#C18, 1933 (July 24) \$4.50 on 75c Bistre Balbo Flight, Perf 14.2** Lovely mint single with gorgeous fresh colour and clear surcharge impression (Position 4 in the setting of four), intact perforations and full immaculate original gum, never hinged. A choice stamp in all respects, XF NH, 2009 Greene cert. **900.00**
- 182 ★ **#C18iv, 1933 (July 24) \$4.50 on 75c Bistre Balbo Flight, Perf 14** Very well centered within balanced margins, post office fresh and showing flight surcharge (Position 4 in the setting of four), full original gum, never hinged. A nice stamp, VF+ NH, 2008 Greene cert. **1,100.00**

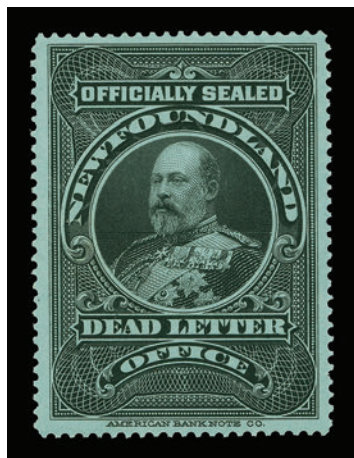
POSTAGE DUE AND OFFICIALLY SEALED



185



183



186

- 183 ★ **#J7a, 1949 10c Dark Violet Postage Due, Watermarked, Perf 11** Well centered mint vertical pair imperforate horizontally between stamps, fresh and with full original gum, never hinged. A rarely offered perforation error pair of which only 30 are known (and fewer in such quality), VF NH, 2004 Greene certificate. **2,000.00**
- 184 ★ **#J7i, J7ii, 1949 10c Dark Violet, Watermarked, Perf 11** Lower left corner mint single with period after "DUE" and mint single with "LUE" variety. An attractive duo, VF NH *(Not Illustrated)* **170.00**
- 185 ★ **#OX1, 1905 King Edward VII Officially Sealed Black on Blue Paper, No Watermark, Perf 12** Choice and mathematically well centered mint example, gorgeous colour and impression on fresh paper, possessing full original gum, very lightly hinged. A tough stamp to find in nice quality, VF VLH, 1994 Greene cert. **1,000.00**
- 186 ★ **#OX1i, 1905 King Edward VII Officially Sealed Black on Blue Paper, Watermarked, Perf 12** Scarce and well centered mint example, nice colour and with crisp impression on fresh paper, showing "JU" watermark letters from "JUDICIAL", full original gum, VF OG, 1994 Greene cert. **1,500.00**
- 187 ★◎ **Balance of Collection** Displayed on stockpages with a total of 125 mint stamps, mostly mint never hinged and mainly different; also five used stamps. Starts with a few Pence and Cents stamps (three with Greene certs.), several 1910 Guy issues incl. #92, Publicity Issues with #145-159 and #163-171 NH sets, #145 with dramatic misperf., #183-199, #191f, 197d, 212-225 set, Dues, all NH, etc. Overall a VF and clean lot. *(Not Illustrated)* **Est. 750.00**

Highlights



Lot 191



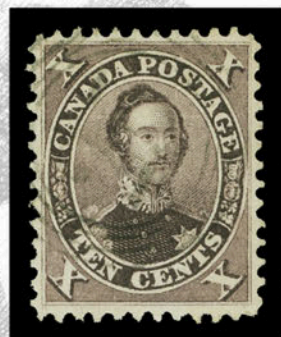
Lot 210



Lot 205



Lot 211



Lot 214



Lot 221

Canada 1851 - 1897

Pence to Small Queen

(Lot 188 - 244)



Lot 230



Lot 231



Lot 241



CANADA PENCE



188



189

- 188** ☉ **#1, 1851 3p Red on Handmade Laid Paper, Imperforate** A handsome used example with large margins all around, nice bright colour, showing clearly laid lines, centrally struck concentric rings cancellation in black. A choice stamp, XF, 2005 Greene cert. **1,600.00**
- 189** ☉ **#1a, 1851 3p Orange Red on Handmade Laid Paper, Imperforate** A superb used example with large sized margins all around, brilliant colour on fresh paper, light centrally struck concentric rings cancellation in black. A great stamp in all respects, XF, 2007 Greene cert. **1,600.00**



190



191

- 190** ☉ **#2, 1851 6p Slate Violet on Handmade Laid Paper, Imperforate** A remarkable used example with full even margins, clear laid lines, true colour and clear impression, neat almost face-free concentric rings cancel in black at right. A most appealing classic stamp, XF GEM, 2005 Greene cert. **2,500.00**
- 191** ☉ **#2b, 1851 6p Brown Purple on Handmade Laid Paper, Imperforate** A visually stunning used example, superbly centered amid four enormous margins, deep rich colour and sharp impression on fresh laid paper with visible laid lines, unobtrusive socked-on-nose concentric rings cancellation lightly struck in black making this stamp much more desirable than the majority of known examples, this shade is considerably scarcer than the slate violet. A superb stamp in all respects and ideal for the perfectionist, XF GEM, 1990 BPA and 2007 Greene certificates. **2,500.00**



192



193



194

- 192** ☉ **#4, 1853 3p Red on Medium Wove Paper, Imperforate** A large margined used example with deep colour on fresh wove paper, light centrally struck concentric rings cancellation in black. A nice stamp in choice condition, XF, 2005 Greene cert. **300.00**
- 193** ☉ **#4a, 1853 3p Brown Red on Medium Wove Paper, Imperforate** A marvelous used example showing huge large margins all around, shows part of adjacent stamp at right, gorgeous fresh colour and clear impression on fresh wove paper, light four-ring '21' cancellation of Montreal. A highly desirable stamp for the meticulous collector, XF GEM, 2007 Greene cert. **350.00**
- 194** ☉ **#4a, 1853 3p Brown Red on Medium Wove Paper, Imperforate** A most attractive used example with large portion of sheet margin at top, large margins on other three sides, lovely rich colour and deep impression, showing a nicely struck four-ring '21' (Montreal) cancellation in black. A superior example, XF **350.00**



195



196



197

- 195 ☉ #4d, 1854 3p Orange Red on Thin Crisp Hard Paper, Imperforate** A spectacular used example with portion of sheet margin at top and oversized margins on other three sides, brilliant fresh colour and sharp impression, very lightly cancelled. XF GEM, 2006 Greene cert. **300.00**
- 196 ☉ #4i, 1856 3p Deep Red on Medium Wove Paper, Imperforate** Superb used example showing huge margins, amazing rich colour and deep sharp impression on fresh wove paper, light cancellation in black. A wonderful stamp in top-quality that would satisfy the most demanding collector, XF GEM, 2005 Greene cert. **350.00**
- 197 ☉ #4ii, 1852 3p Orange Red on Medium Wove Paper, Imperforate** An attractive used example with ample to enormous margins, beautiful fresh colour and clear impression on fresh wove paper, showing a face-free concentric rings cancellation in blue. A choice stamp, VF+, 2007 Greene cert. **350.00**



198



199

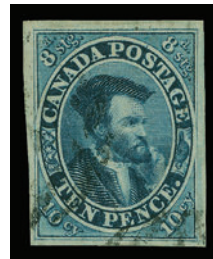


200

- 198 ☉ #4iii, 1858 3p Red on Ribbed, Hard Wove Paper, Imperforate** A lovely fresh and seldom seen used example with full margins, deep rich colour and with light unobtrusive Toronto diamond-shaped grid cancellation in black. Very attractive, especially in such nice quality, XF, 2008 Greene cert. **850.00**
- 199 ☉ #4iv, 1854 3p Orange Red on Thin Crisp Oily Wove Paper, Imperforate** A nice used example with clear to huge margins, deep colour, usual somewhat blurry image characteristic of this printing, socked-on-nose concentric rings cancellation in black, VF, 2008 Greene cert. **350.00**
- 200 ☉ #4xi, 1854 3p Scarlet Vermilion on Thin Crisp, Hard Wove Paper, Imperforate** Selected used example with full to large margins all around, lovely fresh colour and centrally struck concentric rings cancellation in black. A superb stamp, XF, 2008 Greene cert. **350.00**



201



202

- 201 ☉ #5, 1855 6p Slate Grey on Medium Wove Paper, Imperforate** A handsome used example with large even margins on all four sides, bright colour and sharp impression, light centrally struck four-ring '21' cancellation of Montreal. A choice and appealing stamp, XF, 2006 Greene cert. **2,000.00**
- 202 ☉ #7i, 1855 10p Dull Blue on Thin, Crisp Hard Wove Paper, Imperforate** A choice used example with unusually large margins for the issue, bright colour and razor-sharp impression, unobtrusive cancellation in black. One of the most difficult pence issues to obtain in sound condition and bearing large margins, XF GEM, 2002 BPA cert. **2,500.00**



203



204



207

- 203 Ⓢ **#8, 1857-1858 ½p Rose on Medium Wove Paper, Imperforate** A superb large margined used example with lovely pastel colour on fresh wove paper, showing large portion of Belleville double arc datestamp in black. A most appealing stamp in superior quality, XF GEM, 2006 Greene cert. **900.00**
- 204 Ⓢ **#8i, 1857-1858 ½p Lilac Rose on Medium Wove Paper, Imperforate** An impressive used example of this elusive shade, true deep rich colour and sharp impression with clear to enormous margins, showing portion of adjacent stamp at left, light unobtrusive cancellation. A stunning stamp, VF GEM, 2008 Greene cert., ex. "*Loch*" **1,000.00**



- 205 Ⓢ **#9, 1857 7 ½p Green on Medium Wove Paper, Imperforate** A superlative used example with large to enormous margins all around, showing portion of adjacent stamp at top and with upright socked-on-nose four-ring '27' cancellation of Ottawa, lovely rich colour on fresh wove paper, a most desirable four-ring cancelled stamp for the advanced collector, VF, 2008 Greene cert., ex. "*Loch*" **4,500.00**

A GREAT STAMP RANKING AMONG THE FINEST SEVEN AND ONE HALF PENCE SHOWING A FOUR-RING NUMERAL CANCELLATION.



- 206 Ⓢ **#10, 1857 6p Reddish Purple on Thick Soft Wove Paper, Imperforate** A stunning used example with uncharacteristically large margins, unusually deep fresh colour on fresh wove paper and showing a centrally well struck four-ring '21' cancellation in black of Montreal. Among the most difficult Pence issues to find in sound condition and especially so with such large margins, VF JUMBO, 1980 PF and 2005 Greene certificates. **8,000.00**
- 207 Ⓢ **#12i, 1859 3p Brown Red, Perf 11 ¾** A used single, well centered for this notoriously difficult early perforated stamp, deep colour and lightly struck cancellation, VF, 2007 Greene cert. **1,600.00**

CENTS



208



209

- 208 ☉ **#14, 1865-1868 1c Rose, Perf 12** An exceptional used example, very well centered within large margins, bright fresh colour on fresh wove paper, showing a large portion of Quebec (JY 22 65) CDS postmark, most appealing, XF **125.00**
- 209 ☉ **#15, 1864-1868 5c Vermilion, Perf 12** Extremely well centered used example with perforations well clear of design all around, gorgeous fresh colour and sharp impression on fresh wove paper, light central grid cancellation in black. XF **50.00**



- 210 ☉ **#15v, 1864-1868 5c Vermilion, Perf 12** A most attractive used example of the sought-after Major Re-entry (Position 28), entire design doubled particularly visible on the left side of the stamp, unusually well centered with perforations well clear of design on all sides, unbelievable deep fresh colour with striking impression and light unobtrusive concentric rings cancellation in black. Without any question this fabulous example easily ranks among the finest used examples extant, XF GEM, 1999 Brandon and 2005 Greene certificates. **1,000.00**



- 211 ☉ **#16, 1859 10c Black Brown (PO 1A - First Printing), Perf 11¼** A fabulous used example of this early perforated stamp, true rich colour with sharp impression on fresh wove paper, centering is much superior to what's normally encountered on this issue, perforations are well clear of design on all sides, large portion of four-ring '21' cancellation of Montreal, XF, 2007 Greene cert. **8,000.00**

AN EXTREMELY FINE EXAMPLE OF THE TEN-CENT PRINCE ALBERT FIRST PRINTING IN BLACK BROWN. ESPECIALLY DESIRABLE FOR ITS SUPERIOR CENTERING AND FOUR-RING NUMERAL CANCELLATION. A WONDERFUL STAMP FOR THE CONNOISSEUR.



212



213

- 212 ☉ **#17, 1865-1867 10c Red Lilac, Perf 12** Extremely well centered used example with perforations well clear of design on all sides, fresh colour and light grid cancellation, VF **225.00**

- 213 ☉ **#17b, 1862 10c Brown, Perf 11½** Very well centered used example with gorgeous fresh colour and impression on crisp fresh wove paper, light grid cancel. A choice stamp, VF, 2006 Greene cert. **200.00**



- 214 ☉ **#17e, 1859 10c Deep Red Purple, Perf 11½** A remarkable used example showing deep rich colour characteristic of this early printing, exceptionally well centered within oversized balanced margins, perforations well clear of the design on all sides which is rarely seen, gorgeous colour on fresh paper, light four-ring numeral cancellation. A visually stunning stamp in top-quality unlike the vast majority of examples that we have seen, superb in all respects, XF GEM, 1968 RPSL and 2007 Greene certificates. **1,200.00**



215



216



217

- 215 ☉ **#18ii, 1860-1863 12½c Green, Perf 11½** Precisely centered used example, perforations clear of design on all sides, with deep colour and impression on fresh wove paper, light concentric rings cancellation in black. A difficult stamp to find in such nice quality, XF, 2006 Greene cert. **175.00**

- 216 ☉ **#19, 1865-1867 17c Blue, Perf 12** Superbly centered used examples with perforations well clear of design, nice fresh colour and impression with light CDS postmark (FE 11 67). A choice stamp, grossly under-catalogued in such quality, XF, 2008 Greene cert. **300.00**

- 217 ☉ **#20i, 1865-1868 2c Claret Rose, Perf 12** Very well centered used example with perforations clear of design on all sides, lovely fresh colour and impression, showing portion of Ottawa duplex grid cancellation, couple irregular perfs at right, XF, 2004 Greene cert. **425.00**

LARGE QUEEN



218



220

- 218 ★ #24b, 1868 2c Deep Green on Thin Crisp Wove Paper, Perf 12 An exceptionally well centered unused example with deep colour on fresh wove paper, showing clear guidelines at left and at foot. An attractive stamp in choice condition, VF, 2009 Greene cert. **1,400.00**



- 219 ★ #26, 1875 5c Olive Green on Vertical Wove Paper, Perf 11½x12 A beautiful mint example, extremely well centered with rich colour on fresh paper, possessing large portion white streaky original gum characteristic of the Five-cent stamp. A choice and unusually well centered stamp, XF, 2007 Greene cert. **5,000.00**

- 220 ★ #29b, 1873-1875 15c Red Lilac on Horizontal Wove Paper, Perf 12 Precisely centered unused example with disturbed original gum, bright colour and impression of this early printing. A seldom seen stamp with superior centering, XF (Catalogue valuation for unused without gum). **1,200.00**



- 221 ★ #29ii, 1891-1894 15c Purple on Vertical Wove Paper, Perf 12 A spectacular positional mint example from the upper right sheet corner, very well centered within large margins, post office fresh colour and impression, showing the sought-after "Pawnbroker" plate variety, full pristine original gum that is hinged in top selvage only, leaving stamp never hinged. Certainly one of the finest mint never hinged examples of the variety that can exist, XF NH GEM, 2007 Greene certificate for a corner block from which it originates. **2,250.00**



222



223

- 222 ★ **#30b, 1894-1896 15c Greyish Blue on Vertical Wove Paper, Perf 12** An absolutely stunning unused example, exceptionally well centered with unusually wide margins, gorgeous rich colour and clear impression on fresh wove paper. An eye-catching stamp ideal for the perfectionist, XF JUMBO GEM, 2009 Greene cert. **150.00**
- 223 ★ **#30i, 1894-1896 15c Slate Grey on Vertical Wove Paper, Perf 12** Exceptionally well centered mint example with uncharacteristically large margins for the issue, brilliant fresh colour and impression on fresh wove paper, full unblemished original gum, never hinged. Easily one of the nicest mint examples we have handled, a wonderful stamp worthy of the finest collection, XF NH GEM, 1997 Greene cert. **450.00**

SMALL QUEEN



224



226



225

- 224 ★ **#34, 1889-1897 ½c Black (Ottawa Printing), Perf 12** Unusually well centered mint block of eight showing full plate imprint (Boggs Type V) in lower margin, with full original gum, strong offset on gum side characteristic of this printing, hinged in selvage only leaving all stamps never hinged. A nice plate imprint block in premium quality, VF (Catalogue value is for singles only). **600.00**
- 225 ★ **#34, 1893-1897 ½c Black (Ottawa Printing) on Thinner Wove Paper, Perf 12** Mathematically centered and fresh mint example with deep rich colour and full pristine original gum, never hinged, XF NH **75.00**
- 226 ★ **#34, 1882-1887 ½c Black (Montreal Printing) on Medium Wove Paper, Perf 12** A superb mint example, precisely centered with enormous margins, lovely fresh colour and clear impression with full unblemished original gum, never hinged. A visually appealing stamp, VF NH JUMBO **75.00**



- 227 ★ #34iii, 1889-1897 ½c Black (Ottawa Printing), Perf 12 Very well centered mint horizontal strip of six with gutter margin at centre, fresh colour and with full pristine original gum, never hinged. Choice and seldom seen, VF NH **1,300.00**

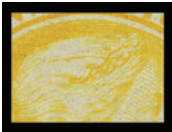


228



229

- 228 ★ #35i, 1888 1c Yellow (Montreal Printing), Perf 12x12½ A very well centered mint block of four with gorgeous fresh colour and bright impression, possessing full pristine original gum, never hinged. A beautiful multiple from the end of the Montreal printing, VF+ NH **1,200.00**
- 229 ★ #35i, 1880-1888 1c Yellow (Montreal Printing), Perf 12 An outstanding mint example, remarkably well centered with unusually large margins, deep colour and impression on pristine paper, with full immaculate original gum that has never been hinged. Stamps issued during the Montreal printing era are considerably scarcer in premium condition than later issues from the Ottawa 1888-1897 era, this superb stamp is among the finest examples we have seen, XF NH GEM, 2007 Greene cert. **300.00**



- 230 ★ #35viii, 1896-1897 1c Bright Yellow (Ottawa Printing), Perf 12x12¼ A choice extremely well centered mint single showing the sought-after "Strand of Hair" plate variety (medium length; Plate C, Position 13), brilliant fresh colour and impression with full original gum, never hinged. Rarely found in such exceptional quality, an ideal stamp for the advanced collector, XF NH, 2005 Greene certificate for a block of ten from which it originates. **3,600.00**

Fax your Bid(s) toll free in North America
Dial 1(888) 867-8267



- 231 ★ **#36vi, 1891 2c Dark Green (Ottawa Printing), Perf 12** A remarkable mint example of the rarely offered Major Re-entry (Position 97 from the "Montreal" Plate), most noticeable in "CENTS" with strong doubling, this stamp is exceptionally well centered with incredibly large margins and shows a portion of the plate imprint (Boggs Type V) in margin at foot (a key element in plating this variety), deep rich colour and wonderful impression on pristine fresh paper, with full unblemished original gum, never hinged. One of the highlights of this collection and a record setting stamp, XF NH JUMBO, 2006 Greene cert. (Catalogue valuation as fine centered only). **1,500.00**

WITHOUT ANY QUESTION THIS IS THE FINEST MINT NEVER HINGED EXAMPLE OF THE MAJOR RE-ENTRY IN EXISTENCE. A VISUALLY STUNNING STAMP IDEAL FOR THE ADVANCED COLLECTOR LOOKING FOR SOMETHING TRULY SPECIAL.



232



234

- 232 ★ **#37c, 1872 3c Dull Red (Montreal Printing), Perf 12x12¼** Very well centered mint example with unusually tall margins, pastel-like fresh colour and clear impression with full original gum, never hinged; a choice example of this early printing, VF NH, 2000 Greene cert. **600.00**



- 233 ★ **#38, 1880-1888 5c Olive Green (Montreal Printing), Perf 12** An exceptionally well centered mint example of this difficult stamp, brilliant fresh colour and clear impression on pristine fresh paper, possessing full unblemished original gum that has never been hinged. A remarkable stamp that would be nearly impossible to improve upon. XF NH GEM, 1999 CPES cert. **3,600.00**
- 234 ★ **#39, 1876 6c Yellow Brown (Montreal Printing), Perf 12** Precisely centered mint example with unusually wide margins, brilliant fresh colour on pristine paper with full streaky original gum characteristic of this printing, very light hinge mark. A scarce stamp in superior quality, XF VLH, 2009 Greene cert. **900.00**



235



236



237

- 235 Ⓞ **#40a, 1880 10c Magenta (Montreal Printing), Perf 12** A fabulous used example, exceptionally well centered within uncharacteristically large margins all around, with light grid cancellation in black, grossly undervalued for such a premium stamp, XF JUMBO **100.00**
- 236 ★ **#41, 1889-1897 3c Vermilion (Aniline Ink; Ottawa Printing), Perf 12x12 1/4** Superbly centered mint example with balanced large margins, deep rich colour on pristine fresh paper, with full original gum, never hinged. A gorgeous stamp, seldom encountered in such superior quality, XF NH JUMBO, 2007 Greene cert. **240.00**
- 237 ★ **#42, 1896-1897 5c Grey Black (Ottawa Printing), Perf 12x12 1/4** Exceptionally well centered mint example with post office fresh colour and impression on pristine fresh paper, possessing full unblemished original gum, never hinged. A superb stamp in all respects, XF NH, 2006 PF cert. **900.00**



238



239



240

- 238 ★ **#43, Mid-1890s 6c Red Brown (Ottawa Printing), Perf 12** A very attractive mint example showing large portion of plate imprint (Boggs Type V) in left sheet margin, unusually well centered for this stamp with wide margins and brilliant fresh colour, possessing full pristine original gum, never hinged. A great stamp with visual appeal, XF NH, 2009 Greene cert. **1,000.00**
- 239 ★ **#43, Mid-1890s 6c Red Brown (Ottawa Printing), Perf 12** A remarkable mint example, precisely centered with balanced oversized margins, beautiful rich colour and sharp impression with full original gum, lightly hinged. An eye-catching stamp in superior quality. Catalogue valuation is irrelevant for such a stamp, XF LH GEM, 2009 Greene cert. **250.00**
- 240 ★ **#44, 1897 8c Violet Black (Ottawa Printing), Perf 12x12 1/4** Mint single with superior centering, brilliant fresh colour and very sharp impression on pristine fresh paper, possessing full immaculate original gum, never hinged. An elusive stamp to obtain in such outstanding quality, XF NH, 1994 Greene cert. **1,200.00**



- 241 ★ **#45, 1897 10c Brown Red (Ottawa Printing), Perf 12x12 1/4** An outstanding mint example with true rich colour and deep impression, unusually large balanced margins, exceptionally well centered that is seldom the case on this stamp, with full original gum that has never been hinged. A superb stamp that easily ranks among the finest examples we have seen, XF NH GEM, 1996 Greene cert. **2,700.00**



- 242 ★ #45a, 1890-1891 10c Rose Carmine (Ottawa Printing), Perf 12 A marvelous mint example, very well centered and showing large portion of imprint (Boggs Type V) in top margin, lovely post office fresh colour and bright impression on pristine paper, possessing full unblemished original gum, never hinged. An unusually choice example with much eye-appeal, XF NH, 1993 Greene cert. **2,400.00**



243



244

- 243 ★ #46, 1893 20c Vermilion A fabulous mint example, extremely well centered within large margins, brilliant post office fresh colour and sharp impression on fresh wove paper, possessing full original gum, never hinged. Rarely encountered in such top-quality, XF NH, 1991 Greene cert. **2,400.00**
- 244 ★ #47, 1893 50c Deep Blue, Perf 12 Well centered mint example of this sought-after high value, brilliant colour on fresh paper, possessing full original gum that has never been hinged. Not often seen in this quality. VF NH, 1994 Greene cert. **2,400.00**

Vincent Graves Greene Philatelic Research Foundation

Canada's Premier BNA Expertizing Service

TWO NEW PUBLICATIONS

Each illustrated in Full Colour; 8 ½ x 11 format; hardbound

See website or contact Foundation for more detail

The Large Queen Stamps of Canada and their Use, 2nd edition

By H.E. & H.W. Duckworth

over 400 pages; 80 in colour;
updated and expanded
information on each value.

All values analyzed through
full period of use including
shade varieties

\$125 Cdn. plus shipping

Canada's Postage Stamps of the Small Queen Era 1870-1897

by J. Hillson & J.E. Nixon

over 240 pages; 170 in colour;
proofs, issued stamps, plates,
shades, re-entries, uses.

Includes Small Queens, Widow
Weeds, and 1891 Canada Bank
Note Co. essays

\$150 Cdn. plus shipping

Order from:

**VINCENT
GRAVES GREENE
PHILATELIC RESEARCH
FOUNDATION**

10 Summerhill Ave.,
Toronto, Ontario,
M4T 1A8, Canada
Ph. 416-921-2073

vggfoundation@on.aibn.com

www.greenefoundation.ca

Eastern Auctions Ltd.

Would like to showcase your collection.



Canada's most trusted auction house

Since 1980 we have steadily built a reputation for outstanding realizations. Numerous record prices have been achieved for superior quality stamps.

Take advantage of our friendly and professional service. Your collection will be described by our expert lotters and lavishly illustrated in our deluxe catalogue. Commission rates are very competitive and prompt payment is always guaranteed.

Contact us today for further details.



Eastern Auctions Ltd.

P.O. Box 250 - Bathurst - New Brunswick - E2A 3Z2 - Canada

Telephone: 1 (800) 667-8267 - Fax: 1 (888) 867-8267 - E-mail: easternauctions@nb.aibn.com

Highlights



Lot 262



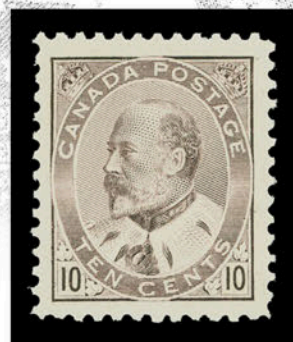
Lot 263



Lot 265



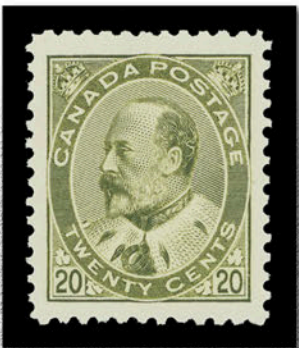
Lot 289



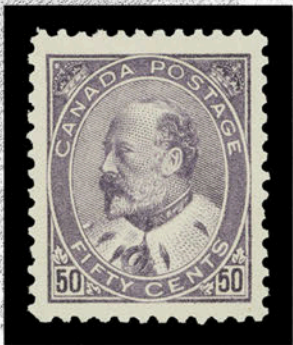
Lot 323

Diamond Jubilee to Québec Tercentenary

(Lot 245 - 339)



Lot 324



Lot 327



Lot 334



Lot 338



1897 DIAMOND JUBILEE



- 245 ★ **#50, 1897 ½c Black** Extremely well centered and fresh mint example, sharp impression on fresh paper with full original gum, never hinged, choice, XF NH **480.00**



- 246 ★ **#51, 51i, 1897 1c Orange and 1c Yellow Orange** Former stamp well centered with deep rich colour, latter exceptionally well centered with jumbo margins, full original gum, never hinged. An attractive duo, VF-XF NH, both with 1997 Greene certificates. **180.00**



- 247 ★ **#52, 52i, 1897 2c Green and 2c Deep Green** Both superbly centered with large margins, lovely fresh colours and possessing full original gum, never hinged. A select duo, XF NH, 1997 Greene certificate for the 2c deep green. **210.00**



- 248 ★ **#53, 53i, 1897 3c Bright Rose and 3c rose** Mint examples, former extremely well centered within jumbo margins and latter precisely centered with amazingly rich colour, both with full pristine original gum, never hinged. XF NH, 1992 Greene certificate for the 3c bright rose. **150.00**



249



250

- 249 ★ **#54, 1897 5c Deep Blue** Well centered mint example with large margins, rich colour on fresh paper, with full unblemished original gum, never hinged. A nice stamp, VF+ NH, 2007 Greene cert. **270.00**
- 250 ★ **#54i, 1897 5c Slate Blue** Superbly centered mint single, brilliant fresh colour and wove paper, possessing full pristine original gum, never hinged. A great stamp in all respects, XF NH, 2007 Greene cert. **270.00**



251



252

- 251 ★ **#55, 1897 6c Yellow Brown** A marvelous mint example of this key stamp, precisely centered within unusually large margins, luxuriant fresh colour and clear impression on fresh wove paper, possessing full pristine original gum, never hinged. It would be difficult to obtain a finer mint stamp, worthy of the finest collection, XF NH GEM, 2007 Greene cert. **900.00**
- 252 ★ **#56, 1897 8c Dark Violet** A visually stunning mint example, exceptionally well centered with unusually large margins, brilliant fresh colour with crisp impression, possessing full original gum, never hinged. A wonderful stamp for any collector, rarely seen in such high quality, XF NH JUMBO, 1992 Greene cert. **540.00**



253



254



- 253 ★ **#57, 1897 10c Brown Violet** An impressive mint example, very well centered within large margins, brilliant fresh colour and clear impression on fresh wove paper, possessing full pristine original gum, never hinged. Choice XF NH, 2003 PF cert. **600.00**
- 254 ★ **#57i, 1897 10c Brown Violet** A superbly centered mint example with deep fresh colour, the elusive Major Re-entry (Position 5), possessing full immaculate original gum, never hinged. A rarely encountered plate variety in such superior quality, XF NH, 1997 Greene cert. **1,500.00**



255



256



- 255 ★ **#58, 1897 15c Steel Blue** A well centered mint example, lovely fresh colour and sharp impression on pristine paper, possessing full original gum, never hinged. A challenging stamp to find in top-quality, VF+ NH, 1992 Greene cert. **1,200.00**
- 256 ★ **#58 + variety, 1897 15c Steel Blue** Extremely well centered and fresh mint example showing a prominent and unusual plate "scratch" in the form of an "X" in the upper right corner. An unlisted variety for the specialist, VF LH (Catalogue valuation is for a normal stamp only). **400.00**



257



258

- 257 ★ **#59, 1897 20c Vermilion** A marvelous mint example, precisely centered within uncharacteristically large even margins, deep rich colour and sharp impression on pristine paper, full original gum, never hinged, negligible fingerprint on gum not mentioned in accompanying certificate. A choice stamp, XF NH, 2007 Greene cert. **1,200.00**
- 258 ★ **#59i, 1897 20c Deep Vermilion** Exceptionally well centered mint example showing amazingly vivid colour on fresh wove paper, full original gum, never hinged. A stunning stamp, XF NH, 2007 Greene cert. **1,350.00**



- 259 ★ **#59ii, 1897 20c Vermilion** Post office fresh mint example, precisely centered within balanced margins, lovely fresh colour and sharp impression, showing the joined "W-E" (Position 15) plate variety, with full original gum, never hinged. A striking stamp, seldom encountered in such superior quality, XF NH, 1994 Greene cert. **2,700.00**

All lots are available for viewing on our website in high resolution.
www.easternauctions.com



260



261

- 260 ★ **#59iii, 1897 20c Vermilion** Well centered mint single with clear impression and lovely fresh colour, showing Re-entry in Crown and "P" of "POSTAGE" (Position 2) plate variety, full original gum with slight overall gum disturbance, nevertheless a tough stamp to find, VF+ (Catalogue valuation as hinged) 2005 Greene certificate for a pair, this being the left-hand stamp. **750.00**
- 261 ★ **#60, 1897 50c Ultramarine** Precisely centered mint example in an unusually bright and appealing shade, possessing full immaculate original gum, never hinged. XF NH, 1991 Greene cert. **1,500.00**



- 262 ★ **#60i, 1897 50c Deep Ultramarine** A stunning lower left sheet corner mint example, superbly centered within four balanced jumbo margins, luxuriant deep colour seldom found on this stamp, razor-sharp impression on pristine fresh wove paper, possessing full immaculate original gum that has been never hinged, XF NH GEM and in our opinion the finest known example, 1994 Greene certificate for a corner block of four from which this stamp originates. **1,800.00**

AN EXCEPTIONAL MINT NEVER HINGED EXAMPLE OF THE FIFTY-CENT JUBILEE WHICH IN OUR OPINION HAS REACHED THE HIGHEST QUALITY ATTAINABLE.
A MUST-HAVE FOR THE FINEST COLLECTION.



- 263 ★ #61, 1897 \$1 Lake** A phenomenal mint example, extremely well centered within four large well balanced margins, gorgeous fresh colour with pastel-like impression on fresh wove paper, full pristine original gum, never hinged. We are unable to recall seeing a finer example, XF NH GEM, 1992 Greene cert. **3,600.00**

A FABULOUS MINT NEVER HINGED EXAMPLE OF THE ONE DOLLAR JUBILEE.
ABSOLUTELY SUPERB IN ALL RESPECTS AND WORTHY OF THE FINEST COLLECTION.



- 264 ★ #62, 1897 \$2 Dark Purple** An outstanding mint example of this challenging stamp showing true deep rich colour and sharp impression on pristine fresh paper, exceptionally well centered within balanced large margins and possessing full original gum, never hinged. A superb stamp with outstanding eye appeal, XF NH GEM, 1995 Greene cert. **6,000.00**

A REMARKABLE AND VISUALLY STUNNING STAMP. EASILY ONE OF THE FINEST
EXAMPLES IN EXISTENCE.



- 265 ★ **#63, 1897 \$3 Yellow Bistre** A superlative mint example of this the toughest denomination of all the 1897 Diamond Jubilee Issue, mathematically well centered within four large well balanced margins, deep fresh colour and sharp impression on immaculate paper, possessing full original gum that has never been hinged. An absolute GEM, XF NH, 1988 Greene cert., ex. "Malibu" (Last sold in 2006 for a record price of US\$11,000 excluding buyer's premium). **6,000.00**

THE FINEST MINT NEVER HINGED EXAMPLE OF THE THREE DOLLAR JUBILEE WE HAVE SEEN - ONE OF THE HIGHLIGHTS OF THIS COLLECTION.



- 266 ★ **#64, 1897 \$4 Purple** A remarkable mint example of this notoriously difficult high value, superbly centered within well balanced margins, true rich colour not often seen on this stamp, full original gum that has never been hinged, small owner's handstamp on reverse, faint natural gum bend mentioned for the record, XF NH, clear 1997 PF and 1997 Greene certificates. **6,000.00**

AN EXTREMELY FINE MINT NEVER HINGED FOUR DOLLAR JUBILEE, RARELY OFFERED OR SEEN IN SUCH PREMIUM QUALITY.



- 267 ☉ **#64, 1897 \$4 Purple** Extremely well centered with large margins, gorgeous pastel-like fresh colour, lightly struck Toronto circular cancellation in black. A choice example of this seldom seen used stamp, XF, 1982 PF certificate for a block of four, from which it originates. **1,500.00**



- 268 ★ **#65, 1897 \$5 Olive Green** A fabulous mint example of this sought-after high denomination, well centered, possessing gorgeous fresh colour and razor-sharp impression on pristine paper, with full immaculate original gum that has never been hinged. A superb stamp in all respects, XF NH, 1996 PSE cert. **6,000.00**

A WONDERFUL STAMP WORTHY OF THE FINEST COLLECTION - AMONG THE MOST POPULAR STAMPS IN ALL CANADIAN PHILATELY.

QUEEN VICTORIA "LEAF"



269



270

- 269 ★ **#66, 1897 ½c Black** Very well centered within oversized margins, gorgeous fresh colour and with full pristine original gum, never hinged, XF NH JUMBO **60.00**

- 270 ★ **#67, 1897 1c Blue Green** Well centered and fresh mint single with deep colour and full immaculate original gum, never hinged. A nice stamp, VF NH, 2008 Greene cert. **180.00**



271



272

- 271 ★ **#68, 1897 2c Purple** Extremely well centered within lavish margins, mint with vivid rich colour and deep impression on pristine paper, with full original gum never hinged, XF NH, 2008 Greene cert. **180.00**

- 272 ★ **#69, 1898 3c Carmine** A superb mint example of this difficult stamp, precisely centered with post office fresh colour and full pristine original gum, never hinged. A desirable stamp in superior quality, VF+ NH **300.00**



- 273 ★ **#70, 1897 5c Dark Blue on Bluish Wove Paper** A remarkably well centered mint example within four balanced margins, possessing lovely fresh colour and sharp impression on pristine paper, with full immaculate original gum, never hinged. A difficult stamp to obtain in superb condition, XF NH GEM, 2008 Greene cert. **600.00**

Call us toll free in North America
Dial 1(800) 667-8267
or
Fax us 1(888) 867-8267



274



275

- 274 ★ **#71, 1897 6c Brown** A spectacular mint example, perfectly centered within unusually large margins, gorgeous fresh colour and clear impression on fresh paper, with full original gum, never hinged. Seldom encountered in such superior quality, XF NH JUMBO, 1994 Greene cert. **600.00**
- 275 ★ **#72, 1897 8c Orange on Vertical Wove Paper** Exceptionally well centered mint example within four balanced margins, bright fresh colour and clear impression on fresh paper, possessing full pristine original gum, never hinged. A superb stamp in all respects, XF NH GEM, 1992 Greene cert. **1,200.00**



- 276 ★ **#73, 1897 10c Brown Violet on Vertical Wove Paper** Mathematically centered and pristine mint example of this notoriously difficult stamp, possessing brilliant fresh colour and clear impression, with full immaculate original gum, never hinged. XF NH, 1994 Greene cert. **2,250.00**

QUEEN VICTORIA “NUMERAL”



277



278



- 277 ★ **#74, 1898 ½c Black** Superior mint example with precise centering within large margins, deep rich colour and with full original gum, never hinged. A superb stamp, XF NH **60.00**
- 278 ★ **#74i, 74ii, 1898 ½c Grey** Very well centered mint example showing the Major Re-entry (Plate 1 Right; Position 18), intense colour and possessing full pristine original gum, never hinged. Seldom seen plate variety in such nice quality, VF+ NH, 2008 Greene cert. **450.00**



279



280



- 279 ★ **#75, 1898 1c Grey Green** A stunning mint example, very well centered within uncharacteristically large margins, brilliant fresh colour and clear impression on pristine paper, with full original gum, never hinged. A choice stamp, XF NH JUMBO, 2008 Greene cert. **180.00**
- 280 ★ **#75ii + variety, 1898 1c Blue Green** Exceptionally well centered mint example showing a Re-entry most noticeable in lower left value tablet and in the upper right corner framelines, with amazingly deep rich colour on pristine fresh paper and with full immaculate original gum, never hinged. A superb stamp for the perfectionist, XF NH **180.00**



281



282

- 281 ★ **#76, 1898 2c Purple, Die I** A choice mint example, well centered with lovely fresh colour and possessing full pristine original gum, never hinged, VF+ NH **180.00**
- 282 ★ **#76ii, 1898 2c Reddish Purple, Die I** A fabulous mint example of this scarcer shade, well centered within balanced large margins, lovely bright fresh colour and crisp impression, possessing full original gum, never hinged. XF NH, 2008 Greene cert. **210.00**



283



284

- 283 ★ **#77, 1899 2c Carmine, Die I** An impressive mint example, very well centered within large sized margins, gorgeous fresh colour on pristine paper and with full original gum, never hinged. An eye-catching stamp in superior quality, XF NH JUMBO, 2008 Greene and 2009 PF certificates. **180.00**
- 284 ★ **#77a, 1898 2c Carmine, Die II** A superb mint example, precisely centered within balanced margins, brilliant fresh colour on pristine fresh paper and possessing full unblemished original gum, never hinged. XF NH GEM, 2008 Greene cert. **240.00**



- 285 ★ #77b, 1900 2c Carmine, Die II A magnificent mint booklet pane of six, unusually well centered with brilliant fresh colour and full original gum, never hinged. A choice example of Canada's first booklet pane in an exceptional state of preservation, VF+ NH, 2006 Greene cert. **4,000.00**



286



287

- 286 ★ #78, 1898 3c Carmine A choice mint example, very well centered within large margins, bright fresh colour on pristine paper and possessing full immaculate original gum, never hinged. A beautiful example of this much underrated stamp, XF NH, 2008 Greene cert. **300.00**
- 287 ★ #79, 1899 5c Dark Blue on Bluish Wove Paper A precisely centered mint example with unusually wide margins, post office fresh colour and sharp impression and possessing full immaculate original gum, never hinged. A challenging stamp to find in such premium quality, XF NH, 1994 Greene cert. **900.00**



- 288 ★ #79b, 1899 5c Bright Blue on Whiter Wove Paper An attractive mint example, very well centered and with gorgeous colour, brighter than usually seen on this stamp, with full pristine original gum never hinged. A tough stamp to find, XF NH, 1991 PSE cert. **1,050.00**



- 289 ★ **#80, 1898 6c Brown** A spectacular mint example, extremely well centered with four well balanced and unusually large margins, deep post office fresh colour and clear impression on pristine paper, with full immaculate original gum, never hinged. Simply one of the finest mint never hinged examples that can possibly exist, a superb stamp ideal for the perfectionist, XF NH GEM, 1992 Greene cert. **900.00**



290



291



292

- 290 ★ **#81, 1902 7c Olive Yellow** Superbly centered mint example with four well-balanced large margins, lovely brilliant shade on fresh paper, with full original gum, very lightly hinged. A nice stamp, XF VLH JUMBO, 1995 Greene cert. **250.00**

- 291 ★ **#82, 1898 8c Orange on Vertical Wove Paper** Well centered mint example with brilliant fresh colour on pristine paper, possessing full original gum, never hinged. An attractive stamp in choice condition, VF+ NH, 1996 Greene cert. **1,350.00**

- 292 ★ **#83, 1898 10c Brown Violet** Mathematically centered mint example with lovely pastel-like colour on pristine fresh paper, possessing full pristine original gum, never hinged. A superb stamp in all respects and a difficult stamp to find in such top-quality, XF NH, 1992 PSE cert. **2,250.00**



293



294

- 293 ★ **#84, 1900 20c Olive Green** An extremely well centered mint example of this sought-after stamp, with radiant colour on crisp fresh paper and possessing full pristine original gum, never hinged. Among the most challenging stamps of this period to obtain in superior condition. A desirable stamp for the advanced collector, VF+ NH, 1992 Greene cert. **2,700.00**

- 294 ★ **#84, 1900 20c Olive Green** Mathematically centered mint example within four well-balanced large margins, gorgeous fresh colour and possessing full original gum, very lightly hinged. A superb stamp, XF VLH, 2009 Greene certificate. **900.00**



1898 CHRISTMAS MAP AND 1899 SURCHARGE



295



296

- 295 ★ **#85, 1898 2c Black, Deep Lavender & Carmine** A well centered mint example with true deep lavender oceans, with full pristine original gum, never hinged. An appealing stamp in premium condition, VF+ NH **150.00**
- 296 ★ **#85, 1898 2c Black, Lavender & Carmine** A remarkably fresh and well centered mint example, the true lavender shade, large margins with full immaculate original gum, never hinged. A superb stamp in all respects, XF NH GEM **150.00**



297



298

- 297 ★ **#85i, 1898 2c Black, Grey & Carmine** A very well centered mint example within four large margins, beautiful fresh colours on pristine paper, possessing full unblemished original gum, never hinged. Another gem for the perfectionist, XF NH **150.00**
- 298 ★ **#86, 1898 2c Black, Blue & Carmine** Well centered mint example, nice fresh colour of oceans (also known as bright blue green), with full original gum, never hinged. A nice stamp, VF+ NH **150.00**



299



300

- 299 ★ **#86b, 1898 2c Black, Deep Blue & Carmine** A fabulous mint example, superbly centered within JUMBO margins and possessing full immaculate original gum, never hinged. A premium quality stamp, XF NH GEM **185.00**
- 300 ★ **#86b, 1898 2c Black, Very Deep Blue & Carmine** Nicely centered with striking deeper shade of oceans, pristine fresh paper and full original gum, never hinged. A beautiful stamp, VF NH (Catalogue valuation is for normal shade). **185.00**



301



302

- 301 ★ **#87, 1899 2c on 3c Carmine "Leaf" Provisional Surcharge** Very well centered within large margins, gorgeous fresh colour, possessing full unblemished original gum, never hinged. A premium stamp, XF NH **90.00**
- 302 ★ **#87i, 1899 2c on 3c Carmine "Leaf" Provisional Surcharge** Unusually well centered horizontal mint strip of three showing narrow spacing variety, brilliant fresh colour and with full immaculate original gum, never hinged. As nice as they come, XF NH **300.00**



303



304

- 303 ★ **#88, 1899 2c on 3c Carmine "Numeral" Provisional Surcharge** Exceptionally well centered with unusually well balanced margins, gorgeous post office fresh colour and clear impression, possessing full original gum, never hinged. A superb stamp for the meticulous collector, XF NH GEM JUMBO **120.00**
- 304 ★ **#88 + variety, 1899 2c on 3c Carmine "Numeral" Provisional Surcharge** An attractive mint example, well centered with wide margins, shows an unusual surcharge shift to right, full original gum, never hinged, VF+ NH (Catalogue value as normal stamp only). **120.00**



- 305 ★ **#88i, 1899 2c on 3c Carmine "Numeral" Provisional Surcharge** Well centered mint horizontal strip of three showing the narrow spacing variety, bright fresh colour with full original gum, never hinged. Scarce this nice, VF+ NH **450.00**

Call us toll free in North America
Dial 1(800) 667-8267
or
Fax us 1(888) 867-8267



KING EDWARD VII



306

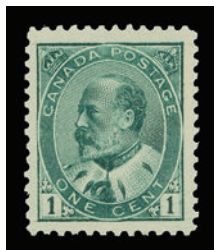


307



308

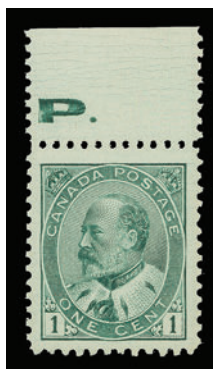
- 306 ★ #89, 1903 1c Green** Exceptionally well centered mint example within well balanced margins, gorgeous fresh colour and impression with full original gum, never hinged. A difficult stamp to find in such top-quality, XF NH, 2008 Greene cert. **180.00**
- 307 ★ #89 + variety, 1903 1c Grey Green** Mint single showing a striking horizontal perforation shift halves of two different stamps, full original gum, lightly hinged. A nice stamp for the specialist. **Est. 150.00**
- 308 ★ #89ii, 1903 1c Grey Green** A most appealing and choice mint example, very well centered within large margins, brilliant fresh colour and sharp impression on pristine fresh paper, possessing full unblemished original gum, never hinged. A difficult stamp to acquire in premium quality, VF+ NH GEM, 2008 Greene cert. **180.00**



309

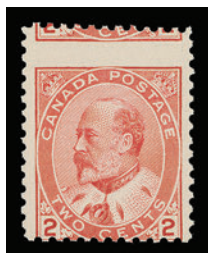


310



311

- 309 ★ #89iii, 1903 1c Deep Blue Green** A marvelous mint example showing amazing rich colour and deep impression on pristine fresh paper, possessing full immaculate original gum, never hinged. A striking shade in top-quality, VF+ NH **180.00**
- 310 ★ #89iii, 1903 1c Blue Green** Precisely centered mint example with lovely rich colour, possessing full original gum, never hinged. Seldom encountered in such nice quality, XF NH **180.00**
- 311 ★ #89iv, 1903 1c Grey Green** A stunning mint example, extremely well centered within large margins, showing prominent "hairlines" variety mostly in margin at top, full pristine original gum hinged in selvage only. A most appealing stamp, XF NH JUMBO, 2008 Greene cert. **300.00**



- 312 ★ #90 + variety, 1903 2c Carmine, Type II** Two mint singles showing different dramatic perforation shift errors, with full original gum NH. A striking duo. **Est. 200.00**



313



314



316

- 313 ★ **#90i, 1903 2c Rose Carmine, Type II** Very well centered mint example showing oversized margins, brilliant fresh colour and full unblemished original gum, never hinged. A challenging stamp to find in such high quality, XF NH JUMBO, 2008 Greene cert. **210.00**
- 314 ★ **#90iii, 1903 2c Carmine, Type I** Imperforate horizontal pair with sheet margin at right, adequate to full margins, bright fresh colour, ungummed as issued, scarce and undercatalogued, VF, 2008 Greene cert. **1,100.00**



- 315 ◎ **#90iii, 1903 2c Carmine, Type I (Plate 1), Imperforate** Full margined used block of four, with light Toronto (AP 19 1927) CDS postmarks, believed to be UNIQUE, VF (Catalogue value as two unused pairs only) **2,200.00**

Note: The William Mulock stamp file was handed over to the newly elected Deputy Postmaster General Coulter in 1905, who later gave it to the Marks Stamp Co. for auction. At the time (1927) this company was using the common imperforate type II from Plate 13 and 14 for postage and apparently confused this Plate I Type I block for the common stamp. This is the only reported used Plate I imperforate block.

- 316 ★ **#90vii, 1903 2c Carmine, Type II** A spectacular mint example of this elusive type, mathematically centered within four large well balanced margins, deep rich colour and possessing full unblemished original gum, never hinged. It would be virtually impossible to find a finer example of this stamp. Superb in all respects, XF NH GEM, 2009 PF cert. (Graded Superb 98) **450.00**

Visit us online www.easternauctions.com

or

E-Mail us at easternauctions@nb.aibn.com



317



318

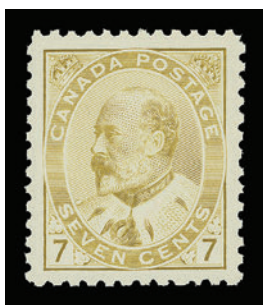


319

- 317 ★ **#91, 1903 5c Blue on Bluish Wove Paper** Exceptionally well centered mint example, showing the characteristic worn impression, gorgeous fresh colour on pristine paper and possessing full immaculate original gum, never hinged. A premium stamp with much visual appeal, XF NH GEM, 1988 Greene cert. **1,050.00**
- 318 ★ **#91, 1903 5c Blue on Bluish Wove Paper** A very well centered mint example, uncharacteristically large margins for this stamp, deep rich colour and razor-sharp impression on pristine paper, with full original gum, very lightly hinged. An eye-catching stamp, XF VLH JUMBO, 2009 PF cert. (Graded XF 90 J) **350.00**
- 319 ★ **#91i, 1903 5c Indigo on Bluish Wove Paper** A premium mint example of this challenging shade, extremely well centered within balanced margins, gorgeous fresh colour and clear impression, possessing full unblemished original gum, never hinged. Tough to find, especially in such superior quality, XF NH, 2008 Greene cert. **1,050.00**



- 320 ★ **#92i, 1903 7c Greenish Olive** Extremely well centered mint example with unusually deep rich colour on pristine paper, possessing full immaculate original gum, never hinged. In our opinion this is the most difficult shade to obtain in top-quality, XF NH GEM, 1991 Greene cert. **1,350.00**



- 321 ★ **#92iii, 1903 7c Straw** A stunning mint example of this difficult stamp, superior centering with four balanced large margins, brilliant fresh colour and very sharp impression on pristine fresh paper, possessing full unblemished original gum, never hinged. A superb stamp in all respects and worthy of the finest collection, XF NH GEM, 1992 Greene and 2009 PF certificates (Graded XF-S 95). **900.00**

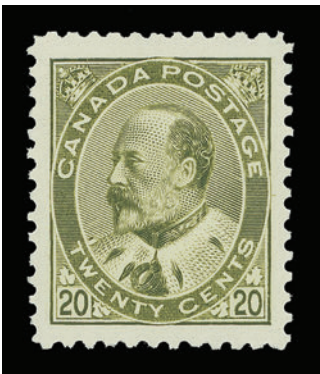


322



323

- 322 ★ **#93, 1903 10c Brown Lilac** An impressive mint example, unusually well centered for this challenging stamp, beautiful rich colour and clear impression on fresh paper, with full original gum, never hinged. A most appealing example of this hard to find stamp, VF+ NH, 1991 Greene cert. **2,100.00**
- 323 ★ **#93i, 1903 10c Dull Lilac** A spectacular mint post office fresh example, brilliant colour with razor-sharp impression on immaculate paper, exceptionally well centered within jumbo margins which is rarely seen on this stamp, and possessing full unblemished original gum, never hinged. A wonderful stamp for the most meticulous collector, absolutely superb in all respects, XF NH GEM, 1993 PSE cert. **2,100.00**

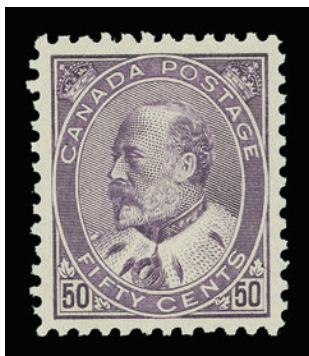


324

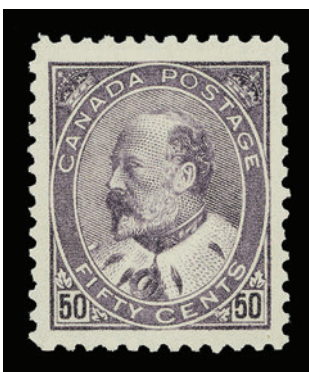


325

- 324 ★ **#94, 1904 20c Olive Green** An amazing mint example of this notoriously difficult stamp, precisely centered within four JUMBO margins, lovely fresh rich colour and clear impression on pristine fresh paper, possessing full immaculate original gum, never hinged. Easily one of the finest examples of this stamp that we have had the pleasure to offer, XF NH GEM, 2005 Greene and 2009 PF certificates. (Graded XF-S 95 XQ) **3,000.00**
- 325 ★ **#94i, 1904 20c Deep Olive Green** An extremely well centered mint single of this tough stamp, showing vivid colour and clear impression on pristine fresh paper, with full unblemished original gum, never hinged. An especially choice mint example, rarely offered in such superior quality and destined for the finest collection, XF NH, 1994 Greene certificate for a strip of three from which it originates. **3,000.00**



- 326 ★ **#95, 1908 50c Purple** A marvelous mint example of this sought-after stamp, very well centered within balanced margins, possessing vibrant fresh colour and unusually sharp impression on pristine paper, with full immaculate original gum that has never been hinged. A most desirable stamp, XF NH GEM, 1992 Greene cert. **4,050.00**



- 327 ★ **#95i, 1908 50c Deep Purple** An amazing mint example of this notoriously difficult stamp, precisely centered within four JUMBO margins, lovely fresh rich colour and clear impression on pristine fresh paper, possessing full immaculate original gum, never hinged. XF NH GEM, 2005 Greene and 2009 PF certificates. **4,050.00**

EASILY ONE OF THE FINEST EXAMPLES OF THIS STAMP WE HAVE HAD THE PLEASURE TO OFFER.

QUÉBEC TERCENTENARY



328



329

- 328 ★ **#96, 1908 ½c Black Brown** An impressive mint example, very well centered within unusually large margins, post office fresh and with full pristine original gum, never hinged. Catalogue valuation for such a stamp is irrelevant, XF NH JUMBO **45.00**
- 329 ★ **#96i, 1908 ½c Black Brown** Exceptionally well centered mint example showing the Major Re-entry (Position 44), lovely fresh colour and possessing full unblemished original gum, never hinged, XF NH, 2008 Greene cert. **180.00**



330



331

- 330 ★ **#97, 1908 1c Green** Mathematically centered mint example, with lovely fresh colour on pristine paper, with full immaculate original gum, never hinged. A superb stamp, XF NH **150.00**
- 331 ★ **#97i, 1908 1c Green** Incredibly fresh and exceptionally well centered mint example showing clear "hairlines", deep rich colour and impression with full unblemished original gum, never hinged. An absolute gem, XF NH, 2008 Greene cert. **180.00**



332



333

- 332 ★ **#98, 1908 2c Carmine** Precisely centered mint example within well balanced large margins, gorgeous fresh colour and impression on pristine fresh paper, with full original gum, never hinged. An impressive stamp in superb condition, XF NH JUMBO, 2008 Greene and 2009 PF certificates (Graded XF-S 95) **180.00**
- 333 ★ **#98i, 1908 2c Carmine** Well centered brilliant mint example showing "hairlines" plate variety in side margins, full original gum, never hinged. An elusive stamp, especially in such choice quality, VF+ NH, 2008 Greene cert. **600.00**



334



335

- 334 ★ **#99, 1908 5c Blue** An outstanding mint example, exceptionally well centered within balanced margins, post office fresh colour and sharp impression on pristine fresh paper, possessing full unblemished original gum that has never been hinged. An absolute gem that would satisfy the most demanding collector. Virtually impossible to find a finer example, XF NH JUMBO, 1992 Greene cert.

375.00

- 335 ★ **#100, 1908 7c Olive Green** A remarkably well centered mint example, balanced JUMBO margins, lovely fresh colour and clear impression on pristine paper, with full immaculate original gum, never hinged. A superb stamp in all respects. Worthy of the finest collection, XF NH GEM, 1991 PF and 2009 PSE certificates.

750.00

336



337

- 336 ★ **#101, 1908 10c Violet** Mathematically centered mint example with oversized margins, fresh vivid colour and sharp impression, possessing full pristine original gum, never hinged. A remarkable stamp in superior quality, XF NH GEM, 1992 Greene cert.

900.00

- 337 ★ **#102, 1908 15c Orange** A spectacular mint example, precisely centered within balanced JUMBO margins, gorgeous fresh colour and clear impression on immaculate paper, possessing full unblemished original gum that has never been hinged. Easily one of the finest examples we have seen, superb in all respects, XF NH GEM, 2005 Greene cert.

1,050.00

338



339

- 338 ★ **#103, 1908 20c Brown** Extremely well centered mint example of this key value, post office fresh colour and clear impression on pristine paper, with full immaculate original gum, never hinged. A superb mint example of this popular stamp, very seldom encountered in such top-quality, XF NH, 1995 PSE cert.

1,200.00

- 339 ★ **#103i, 1908 20c Brown** Very well centered mint example showing the elusive Major Re-entry (Position 21), visible in right "1908" and right vertical frameline, deep rich colour and with full original gum, very light hinge mark. VF+ VLH, 1994 Greene cert.

800.00

Your Reliable Source for British North America Philately

As Canada's leading Stamp dealers, and the only one offering full service to collectors, we provide the following resources to philatelists:

- An extensive newspaper format price list every six weeks.
- A rare stamp list of individual offerings every three weeks.
- A selected rarities catalogue offered every four months.
- The largest inventory of B.N.A. stamps anywhere in the world.
- An extensive stock of philatelic literature.
- A large inventory of Federal and Provincial duck stamps.
- A huge stock of B.N.A. plate proofs and die proofs.

Join our mailing list now and start receiving our wide selection of catalogues.



Selected Rarities Catalogue VI



Gary J. Lyon (Philatelist) Ltd.



Gary J. Lyon (Philatelist) Ltd.

P.O. Box 450 - Bathurst - New Brunswick - E2A 3Z4 - Canada
Tel: 1(506) 546-6363 - Fax 1(506) 546-6627
Email: glstamps@nb.aibn.com - Website www.garylyon.com



Highlights



Lot 379



Lot 388



Lot 399



Lot 419



Lot 467

King George V Admiral (Lot 340 - 535)



Lot 456



Lot 483



Lot 485



Lot 529



1911 – 1925 KING GEORGE V “ADMIRAL”



- 340 ★ #104a/109a, 1915-1924 1c/3c King George V "Admiral" Booklet Panes** Nice selection of 14 mint booklet panes, all VF NH, unless otherwise noted. Includes #104a (three panes; different shades), #104av (LH), 105a, 105b, 106a (four panes; different shades), 107b, 107c (F-VF LH), 108a and 109a. (Unitrade \$2,360) **Est. 750.00**



341



343

- 341 ★ #104, 1911 1c Dark Green (Wet Printing)** Exceptionally well centered mint single within unusually large balanced margins, lovely rich colour and impression, possessing full unblemished original gum, never hinged. A very nice stamp in exceptional quality, XF NH GEM, 2008 Greene cert. **90.00**



- 342 ★ #104aiii, 1913 1c Deep Blue Green (Squat Printing; Wet Printing)** Extremely well centered mint booklet pane of six, with vertical "hairlines" mostly visible in left tab, full original gum, never hinged. As nice as they come and very scarce thus, XF NH, 1994 Greene cert. **500.00**
- 343 ★ #104b, 1911-1913 1c Blue Green (Wet Printing)** Well centered mint single with gorgeous fresh colour and sharp impression on pristine fresh paper, with full immaculate original gum, never hinged. A nice example of this scarcer shade, VF NH, 2008 Greene cert. **150.00**

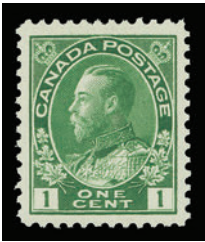


344



345

- 344 ★ **#104i, 1920 1c Yellow Green (Wet Printing)** A beautiful mint single, well centered within large margins, showing full Type C lathework, with full unblemished original gum, never hinged. A very scarce lathework, especially in such premium quality, VF NH JUMBO **600.00**
- 345 ★ **#104i, 1919-1920 1c Yellow Green (Wet Printing)** Nicely centered and fresh mint single showing full Type B lathework, full pristine original gum, never hinged, attractive, VF NH **100.00**



346



347



348



349

- 346 ★ **#104i, 1915-1919 1c Yellow Green (Wet Printing)** Precisely centered mint example with post office fresh colour on pristine paper, possessing full unblemished original gum, never hinged. A choice stamp in all respects, XF NH, 2008 Greene cert. **90.00**
- 347 ★ **#104ii, 1920 1c Dark Yellow Green (Wet Printing)** An extremely well centered mint single with deep colour and impression, with full immaculate original gum, never hinged. A lovely stamp, XF NH, 2008 Greene cert. **90.00**
- 348 ★ **#104ix, 1912 1c Grey Green (Wet Printing)** Superbly centered mint example of this elusive shade, striking bright colour on pristine fresh paper, possessing full immaculate original gum, never hinged. Very difficult to find in such superior quality, XF NH GEM, 2008 Greene cert. **240.00**
- 349 ★ **#104vi, 104viii, 1913-1914 1c Deep Blue Green on Thick Paper (Wet Printing)** A nicely centered mint example showing couple "hairlines" plate variety, showing vivid colour on pristine fresh paper, possessing full unblemished original gum, never hinged. A scarce stamp, VF NH, 2004 Greene certificate for a block from which it originates. **300.00**



- 350 ◎ **#104vii, 1912 1c Deep Blue Green (Wet Printing)** A fabulous well centered used example of the sought-after Major Re-entry (Plate 12 Lower Right, Position 35), noticeable in overall lower portion of stamp design, very well centered with intact perforations and lovely rich colour, typical wavy-line machine cancellation used during this period. A visually striking plate variety that is among the most celebrated of all Canadian Major Re-entries, one of the nicest known examples, VF+, 2008 Greene cert. **2,250.00**



351



355



357



352



354



356



358

- 351 ★ **#105, 1922 1c Orange Yellow, Die I (Wet Printing)** A remarkable mint example, precisely centered with unusually large margins and deep rich colour, showing Type C lathework, with full immaculate original gum, never hinged. A superb lathework single, XF NH GEM **100.00**
- 352 ★ **#105, 1922 1c Orange Yellow, Die I (Wet Printing)** Well centered mint example with post office deep rich colour on immaculate paper, full unblemished original gum, never hinged. A choice stamp with amazing colour, VF NH **90.00**



- 353 ★ **#105ai, 1922 1c Yellow, Die I (Wet Printing)** A remarkable mint booklet pane of four showing clear pyramid guidelines at left, well centered with deep rich colour and possessing full original gum, lightly hinged. Only twelve panes reported, virtually all are hinged; this being one of the finest. Rarely seen in such nice quality and missing from most advanced collections of the Admiral Issue, XF LH, 2006 Greene cert. **3,500.00**
- 354 ★ **#105d, 1924-1925 1c Orange Yellow, Die II (Dry Printing)** A stunning mint example, very well centered within enormous margins, brilliant fresh colour and impression, possessing full pristine original gum, never hinged. A superb stamp in all respects, XF NH JUMBO GEM **75.00**
- 355 ★ **#105f, 1924 1c Yellow, Die I (Dry Printing)** Nicely centered mint example with lovely fresh colour and showing full Type D lathework, scarce on this printing, with full original gum, never hinged. A great item for the advanced collector, VF NH (Catalogue value is for normal 80% strength). **400.00**

- 356 ★ #105f, 1924 1c Yellow, Die I (Dry Printing)** Exceptionally well centered mint example with balanced large margins, post office fresh colour and sharp impression, with full unblemished original gum, never hinged. A superb stamp in all respects, XF NH GEM *(Illustrated on Page 90)* **150.00**
- 357 ★ #105i, 1922 1c Yellow, Die I (Wet Printing)** Extremely well centered mint single with large margins, lovely rich colour and showing unusually strong full Type D inverted lathework, with full pristine original gum, never hinged. Full lathework on this stamp is much scarcer than the catalogue valuation indicates, XF NH *(Illustrated on Page 90)* **200.00**
- 358 ★ #105i, 1922 1c Yellow, Die I (Wet Printing)** Extremely well centered mint single with balanced large margins, rich colour and deep impression, possessing full immaculate original gum, never hinged. A premium stamp, XF NH *(Illustrated on Page 90)* **75.00**



- 359 ★ #106, 1911-1920 2c Carmine (Wet Printing)** An exceptionally well centered mint block of four, lovely fresh colour and clear impression on pristine paper, possessing full unblemished original gum, never hinged. A superb block in all respects, XF NH GEM **360.00**



- 360 ★ #106, 1920-1921 2c Carmine (Wet Printing)** Very well centered mint single showing full Type C inverted lathework, lovely fresh colour and full original gum, lightly hinged. A very scarce lathework stamp which seldom comes on the market, XF LH, 1992 Greene cert. **1,125.00**

Fax your Bid(s) toll free in North America
Dial 1(888) 867-8267



361



362



363

- 361 ★ **#106, 1920-1921 2c Carmine (Wet Printing)** Well centered mint single within large margins and lovely fresh colour, showing full Type C lathework, with full immaculate original gum, never hinged. An attractive lathework single in choice condition, VF+ NH, 1993 Greene cert. **400.00**
- 362 ★ **#106, 1920 2c Carmine (Wet Printing)** Nicely centered mint example with wide margins, showing full Type B lathework with clear doubling (9mm wide), gorgeous fresh colour and full unblemished original gum, never hinged. Seldom encountered in such nice quality, VF NH **400.00**
- 363 ★ **#106, 1920 2c Carmine (Wet Printing)** Very well centered mint example with rich colour and showing full Type B lathework, with full original gum, never hinged, pretty, VF NH **100.00**



364



368

- 364 ★ **#106, 1911 2c Carmine (Wet Printing)** Precisely centered mint example with brilliant fresh colour and impression of an early printing, possessing full pristine original gum, never hinged. A gorgeous stamp, XF NH, 2007 Greene cert. **90.00**



- 365 ★ **#106aiii, 1912 2c Deep Rose Red (Squat Printing; Wet Printing)** Superbly centered mint booklet pane of six, stamps measuring 18 x 21mm, beautiful rich colour, full pristine original gum, never hinged. Hard to find in such superior quality, XF NH, 1992 Greene cert. **700.00**



- 366 ★ **#106b, 1911 2c Pink (Wet Printing)** An extraordinary mint plate "OTTAWA - No - 2" inscription strip of three, unusually well centered with balanced large margins, brilliant colour for this scarce and sought-after early printing, stamps have full pristine original gum, never hinged; hinged in selvage only. A stunning and rare plate multiple, XF NH, 2008 Greene certificate for plate block of six from which it originates. **1,800.00**



- 367 ★ **#106b, 1911-1912 2c Pink (Wet Printing)** Exceptionally well centered mint example of this notoriously difficult shade originating from Plate 2 (showing "accent" mark over "C" of "CENTS"; believed to be position 93 or 94 according to Hans Reiche), lovely fresh colour on pristine fresh paper, possessing full immaculate original gum, never hinged. This marvelous stamp is missing from most advanced collections, XF NH GEM, 1994 Greene cert. **600.00**

- 368 ★ **#106c, 1914 2c Rose Carmine (Wet Printing)** Superbly centered mint example with balanced margins, brilliant fresh colour and sharp impression on pristine fresh paper, possessing full unblemished original gum, never hinged. XF NH GEM, 2007 Greene cert. *(Illustrated on Page 92)* **90.00**



- 369 ★ **#106ii, 1912-1913 2c Deep Rose Red (Wet Printing)** A visually stunning mint example, precisely centered with huge margins uncharacteristic of a wet printing stamp, lovely fresh colour and with full original gum, lightly hinged. Catalogue valuation is irrelevant for such a stamp, XF LH JUMBO, 2006 Greene cert. **30.00**



- 370 ★ **#106iii, 1920 2c Dark Carmine (Wet Printing)** An attractive and well centered mint single with amazingly rich colour on pristine fresh paper, with full immaculate original gum, never hinged, VF NH, 2007 Greene cert. **90.00**



- 371 ★ **#106iv, 1915 2c Orange Red (Wet Printing)** Exceptionally well centered with unusually large margins, post office fresh colour on pristine paper and with full original gum, never hinged. A challenging stamp to obtain in superior quality, XF NH, 2007 PF cert. **105.00**



372



- 372 ★ **#106ix, 1912 2c Rose Carmine (Wet Printing)** An extremely well centered mint example showing numerous prominent “hairlines”, lovely bright fresh colour, full immaculate original gum, never hinged. A superb stamp, XF NH JUMBO, 2007 Greene cert. *(Illustrated on Page 93)* **225.00**



373



374



377



378

- 373 ★ **#107, 1922 2c Yellow Green (Wet Printing)** Gorgeous fresh and well centered mint single showing full Type C lathework, with full original gum, lightly hinged. A nice lathework, VF LH **225.00**
- 374 ★ **#107, 1922 2c Yellow Green (Wet Printing)** Mathematically centered mint example within large margins, beautiful and fresh colour on pristine paper, possessing full immaculate original gum, never hinged. A premium stamp, XF NH GEM **90.00**



375



376

- 375 ★ **#107a, 1924 2c Deep Green (Wet Printing) on Thin Paper** Well centered and choice mint block of four, with characteristic deep colour for this printing, full immaculate original gum, never hinged. A nice block, VF+ NH **360.00**
- 376 ★ **#107a, 1924 2c Green (Wet Printing) on Thin Paper** A fresh mint block of four showing Type D inverted lathework, original gum with slight overall disturbance. A scarce multiple, F-VF (Catalogue valuation is for hinged only), clear 2006 Greene cert. **750.00**
- 377 ★ **#107a, 1924 2c Deep Green (Wet Printing) on Thin Paper** Centered mint single showing usual strength Type D lathework, with full original gum, lightly hinged, VF LH **225.00**
- 378 ★ **#107a, 1924 2c Deep Green (Wet Printing) on Thin Paper** Superbly centered mint example amid large even margins, deep rich colour and possessing full pristine original gum, never hinged. A nice stamp in top-quality, XF NH GEM **90.00**

THE FINEST KNOWN PYRAMID GUIDELINE BOOKLET PANE



- 379 ★ #107bi, 1922 2c Yellow Green (Wet Printing)** An outstanding mint booklet pane of four showing the rare pyramid guidelines at left; the pane is extremely well centered with gorgeous post office fresh colour on immaculate paper, possessing full pristine original gum, never hinged. Without question this is the finest pyramid guideline booklet pane in existence, a superb eye-arresting showpiece, XF NH GEM, 2006 Greene cert. **8,400.00**

Note: According to a recent census (see Admiral Log, January 2008; whole number 16, page 78-89) only 24 pyramid guideline panes are reported; more than half are hinged and a greater percentage being off centered. Of the total 24 panes, only ten panes show a three or four vertical guidelines.



- 380 ★ #107c, 1922 2c Yellow Green (Wet Printing)** A selected mint booklet pane of six stamps, very well centered for this difficult pane, deep rich colour and with full unblemished original gum, never hinged. Seldom encountered in such superior quality, VF-XF NH, 2007 Greene cert. **840.00**



382



385



383



381



384



386

- 381 ★ **#107e, 1923 2c Green (Dry Printing)** Extremely well centered and fresh, with four well-balanced within generous large margins, brilliant shade on pristine fresh paper, possessing full unblemished original gum, never hinged. A superb gem, XF NH **90.00**
- 382 ★ **#107i, 1922 2c Deep Green (Wet Printing)** Nicely centered mint single with rich colour and showing Type D lathework, with full pristine original gum, never hinged, VF NH **150.00**
- 383 ★ **#107ii, 1922-1925 2c Green (Wet Printing)** Lovely fresh mint single, centered with large margins and showing Type D inverted lathework, full pristine original gum, never hinged, attractive, VF NH **150.00**
- 384 ★ **#107ii, 1922 2c Green (Wet Printing)** A stunning mint example with enormous margined, exceptionally well centered within, gorgeous fresh colour and impression, with full pristine original gum, never hinged. A desirable stamp for the meticulous collector, XF NH GEM **90.00**
- 385 ★ **#107iv, 1923-1927 2c Yellow Green (Dry Printing)** Extremely well centered mint block of four, post office fresh colour and full pristine original gum, never hinged. A choice multiple, XF NH **360.00**
- 386 ★ **#107iv, 1923-1925 2c Yellow Green (Dry Printing)** Remarkably well centered mint example with post office fresh colour and sharp impression on pristine paper, with full unblemished original gum, never hinged. A desirable stamp for the perfectionist, XF NH GEM **90.00**
- 387 ★ **#108, 1920-1922 3c Brown (Wet Printing)** Nicely centered mint corner block of four showing Type D inverted lathework, lovely rich colour and with full original gum, natural gum skip on right pair, surprisingly scarce, VF NH **(Illustrated on Page 98) 900.00**

Visit us online www.easternauctions.com

or

E-Mail us at easternauctions@nb.aibn.com

**THE VERY RARE MINT NEVER HINGED
TYPE B INVERTED LATHEWORK**



- 388 ★ #108, 1919-1920 3c Brown (Wet Printing)** An impressive mint corner margin example, brilliant fresh colour, nicely centered with large margins and showing rare full Type B inverted lathework, with full immaculate original gum, never hinged. A most desirable Admiral lathework stamp of the highest caliber and one of the keys to completing a collection, VF NH, 2005 Greene cert. (According to the Glen Lundeen census only 3 to 5 examples exist). **3,300.00**

Note: In our research for other singles and multiples of the Three cent brown with Type B inverted lathework, the extensive Lussey collection had one off-centered mint pair; the Marler collection had a mint hinged block of four; none was present in the fabulous Jephcott collection.

THIS LATHEWORK RARITY IS ESPECIALLY DESIRABLE, BEING THE ONLY CORNER MARGIN EXAMPLE WE WERE ABLE TO FIND IN ALL OUR RESEARCH. A HIGHLY COLLECTABLE ITEM WITH MUCH EYE-APPEAL AND DESTINED FOR AN ADVANCED ADMIRAL COLLECTION.



387



389



390



391



392

- 389 ★ **#108, 1920 3c Brown (Wet Printing)** Nicely centered mint single with large margins, showing seldom seen full Type C lathework, lovely fresh colour and possessing full immaculate original gum, never hinged. A most appealing stamp, VF NH **400.00**
- 390 ★ **#108, 1920-1922 3c Brown (Wet Printing)** Post office fresh and centered mint single showing clear Type D lathework, possessing full unblemished original gum, never hinged, pretty, VF NH **300.00**
- 391 ★ **#108, 1920-1922 3c Brown (Wet Printing)** Well centered mint single with large margins and showing unusually full Type D inverted lathework, with full original gum, lightly hinged mostly in selvage, choice and attractive, VF LH **225.00**
- 392 ★ **#108, 1918-1920 3c Brown (Wet Printing)** Well centered and fresh mint single showing full Type B lathework, full pristine original gum, never hinged. An attractive lathework in choice condition, XF NH **150.00**

Have you been thinking of selling your collection?
 Call us at 1(800) 667-8267 and ask for Gary J. Lyon.
 Give your collection the attention it deserves.
 Consign your stamps to Eastern Auctions Ltd.



393



394



398

- 393 ★ **#108, 1918-1922 3c Brown (Wet Printing)** Exceptionally well centered with four oversized balanced margins, gorgeous fresh colour and clear impression on pristine fresh paper, possessing full pristine original gum, never hinged. XF NH GEM **90.00**

- 394 ★ **#108as, 1918 3c Brown (Wet Printing)** A visually stunning mint single originating from the booklet pane, incredibly well centered amidst fabulous massive margins virtually unseen on any Admiral issue, lovely fresh colour on pristine fresh paper and possessing full immaculate original gum, never hinged. A spectacular stamp, XF NH JUMBO GEM. 2009 Greene cert. **40.00**



395



397

- 395 ★ **#108b, 1918-1922 3c Yellow Brown (Wet Printing)** Nicely centered mint single with brilliant colour and clear impression, showing full Type B lathework, full original gum, lightly hinged, this shade is seldom seen with lathework, VF LH (Catalogue valuation is for most common shade). **110.00**



- 396 ★ **#108c, 1923 3c Brown (Dry Printing)** Very well centered mint block of four with "post office" fresh colour and impression and full original gum, never hinged. An attractive multiple in choice condition, VF-XF NH **360.00**

- 397 ★ **#108c, 1923 3c Brown (Dry Printing)** Very well centered and fresh mint single showing full Type D lathework, with full pristine original gum, never hinged. A choice lathework stamp, XF NH **250.00**

- 398 ★ **#108c, 1923 3c Brown (Dry Printing)** Very well centered mint example with bright fresh colour on pristine paper, with full original gum, never hinged. A nice stamp in choice quality, VF+ NH **90.00**



ONE OF THE RAREST ADMIRAL LATHEWORK



- 399 ★ #108ii, 1920 3c Dark Brown (Wet Printing)** An appealing mint corner margin example showing one of the very rarest examples of lathework - Type C inverted. Lovely and fresh with full pristine original gum, never hinged. An important key item that is missing from most advanced Admiral collections, F-VF NH, 2005 Greene cert. **4,125.00**

Note: The famous Marler collection had only a mint hinged block of four of the type C inverted, and no example was present in either the Jephcott or Lussey collections. According to Glen Lundeen, recognized expert on Admiral Lathework: "Rarity does not seem to totally control the price of lathework. For example, an example of the 50c black with a trace of Type D lathework will sell for more than an example of the 3c brown with Type C inverted lathework. However, the 3c brown is far more rare than the 50c." Offering this lovely example, we hope will set the record straight when it comes to determining realistic evaluations. Only 3 to 5 examples exist according to the Lundeen census.

A CHOICE ITEM OF THE UTMOST RARITY THAT WILL TAKE ITS PLACE BESIDE OTHER BETTER KNOWN ADMIRAL LATHEWORK RARITIES. A WONDERFUL OPPORTUNITY AND AN IMPORTANT SHOWPIECE.



400



401



402

- 400 ★ **#108ii, 1918-1922 3c Dark Brown (Wet Printing)** A splendid mint example, precisely centered with unusually large margins, amazing rich colour, possessing full unblemished original gum, never hinged. A superb stamp, XF NH GEM **90.00**
- 401 ★ **#109, 1923-1924 3c Carmine, Die I (Dry Printing)** Well centered mint block of four with gorgeous fresh colour, with full pristine original gum, never hinged. A nice block, VF NH **360.00**
- 402 ★ **#109, 1923 3c Carmine, Die I (Dry Printing)** Nicely centered and pristine fresh mint single showing full Type D lathework, with unblemished original gum, never hinged, attractive, VF NH **100.00**



403



404

- 403 ★ **#109c, 1923-1924 3c Carmine, Die II (Dry Printing)** Gorgeous "post office" fresh and very well centered mint example on pristine fresh paper, and with full original gum, never hinged. A nice example of this scarcer die, VF+ NH **180.00**
- 404 ★ **#109c, 1924 3c Carmine, Die II (Dry Printing)** A selected mint example showing a brighter shade than normally seen, precise centering, lovely fresh colour on pristine paper and full unblemished original gum, never hinged. A desirable stamp, XF NH GEM **180.00**



- 405 ★ **#109d, 1923 3c Rose Carmine, Die I (Dry Printing)** An extremely well centered mint example of the true rose shade, large well balanced margins, lovely fresh colour on pristine fresh paper, possessing full immaculate original gum, never hinged. XF NH GEM **120.00**



406



407

- 406 ★ **#109iii, 1923-1924 3c Carmine, Die I (Dry Printing)** Post office fresh and well centered mint block of four, showing full pyramid guidelines in left sheet margin, with full original gum, never hinged. Most appealing and in choice condition, VF NH, 1995 Greene cert. **600.00**
- 407 ★ **#109iv, 1923-1924 3c Carmine, Die (Dry Printing)** Well centered and fresh mint upper right corner block showing the "R-GAUGE" inscription in right margin, full original gum, lightly hinged in selvage only leaving all stamps never hinged, scarce and undercatalogued, VF **200.00**



- 408 ★ **#110, 1922 4c Olive Bistre (Wet Printing)** Exceptionally well centered mint example with rich colour on pristine fresh paper, showing an unusually full Type D lathework, with full unblemished original gum, never hinged. Seldom encountered - according to Unitrade catalogue only ten per cent have full lathework such as this one offered here. A desirable and eye-appealing stamp in premium quality, XF NH (Catalogue valuation is for the normal 80% strength). **250.00**



409



410

- 409 ★ **#110, 1922 4c Olive Bistre (Wet Printing)** Exceptionally well centered and fresh mint single, lovely rich colour and impression, possessing full unblemished original gum, never hinged. A premium stamp in all respects, XF NH GEM **240.00**
- 410 ★ **#110, 1922-1925 4c Deep Olive Bistre (Wet Printing)** Very well centered mint example with amazing rich colour on pristine fresh paper, possessing full unblemished original gum, never hinged. A superb stamp showing a deeper shade than normally encountered, XF NH **240.00**



411



414



415



417

- 411 ★ **#110 (shade), 1922-1925 4c Pale Olive Yellow (Wet Printing)** A most appealing mint single showing an unusually bright pale shade, well centered and fresh, full original gum, never hinged. A nice addition to any advanced King George V "Admiral" collection, VF+ NH (Valuation is for regular shade only). **240.00**



- 412 ★ **#110a, 1924 4c Yellow Ochre (Dry Printing - Plate 6)** A fabulous and uncharacteristically large margined mint imperforate pair, gorgeous fresh colour and sharp impression, with pristine fresh paper and full original gum, never hinged, faint vertical crease entirely confined to right margin only and mentioned purely for accuracy, needless to say this easily ranks among the nicest imperforate four-cent we have handled, XF NH, 2009 Greene cert. **6,000.00**



413



416

- 413 ★ **#110b, 1922 4c Olive Yellow (Wet Printing)** Precisely centered mint single with balanced large margins, brilliant fresh colour and showing an elusive full Type D inverted lathework (only 1 in 20 are full such as this one) making it much more desirable; full pristine original gum, never hinged. A wonderful stamp in premium quality, ideal for exhibition, XF NH (Catalogue valuation is for normal 40% strength). **300.00**
- 414 ★ **#110b, 1922-1925 4c Olive Yellow (Wet Printing)** Precisely centered mint example, lovely fresh colour and impression, possessing full pristine original gum, never hinged. An attractive stamp in superb condition, XF NH **240.00**
- 415 ★ **#110c, 1922 4c Golden Yellow (Wet Printing)** Superbly centered mint example showing rich colour on pristine paper, with full immaculate original gum, never hinged. A challenging shade to acquire in top-quality, XF NH GEM, 1992 Greene and 2009 PF certificates (Graded XF-S 95) **600.00**
- 416 ★ **#110c, 1922 4c Golden Yellow (Wet Printing)** An impressive mint example with gorgeous colour, unusually strong Type D lathework, full pristine original gum, never hinged. Unpriced in Unitrade in this particular shade, a nice item for the specialist, F-VF NH, 1991 PSE cert. **Est. 300.00**



- 417 ★ **#110d, 1925-1926 4c Yellow Ochre (Dry Printing)** Precisely centered mint example with four balanced margins, lovely fresh colour and sharp impression, possessing full unblemished original gum, never hinged. An attractive stamp in superior quality, XF NH *(Illustrated on Page 103)* **195.00**



- 418 ★ **#111, 1912-1915 5c Dark Blue (Wet Printing)** An outstanding mint example, extremely well centered with fabulous oversized margins, displaying a combination of physical attributes rarely seen on this key stamp, intense radiant colour on pristine fresh paper and possessing full immaculate original gum, never hinged. A record setting high-quality stamp, that would virtually be impossible to improve upon, XF NH JUMBO GEM, an incredible stamp, 1992 Greene and 2009 PF certificates. **600.00**



- 419 ★ **#111a, 1912 5c Indigo (First Wet Printing)** An outstanding mint example, remarkably well centered with balanced large margins, beautiful vibrant colour and proof-like impression on pristine fresh paper, with full original gum, never hinged. A difficult early Admiral printing to obtain in superior quality, worthy of the finest collection, XF NH GEM, 1994 Greene cert. **1,200.00**



- 420 ★ **#111b, 1917 5c Grey Blue (Wet Printing)** Extremely well centered mint example of this elusive shade, with brilliant fresh colour and clear impression on pristine fresh paper, possessing full unblemished original gum, never hinged. Missing from many advanced collections, XF NH, 2009 PF cert. (Graded S 98). **750.00**

All lots are available for viewing on our website in high resolution.
www.easternauctions.com



421



422



423

- 421 ★ **#112, 1922-1925 5c Violet (Wet Printing)** Post office fresh and well centered mint single with deep rich colour on pristine fresh paper, possessing full immaculate original gum, never hinged. A very nice stamp, VF+ NH **165.00**
- 422 ★ **#112, 1922-1925 5c Violet (Wet Printing)** An appealing mint single, nicely centered and showing very scarce full Type D inverted lathework, gorgeous fresh colour possessing full original gum, lightly hinged, VF LH **450.00**
- 423 ★ **#112a, 1924 5c Violet (Wet Printing) on Thin Paper** Extremely well centered within unusually large margins for the issue, lovely fresh colour and impression, with full original gum, never hinged. Much nicer than normally encountered, XF NH JUMBO **135.00**



- 424 ★ **#112av, 1924 5c Deep Violet (Wet Printing) on Thin Paper** Well centered and fresh mint block of four showing full pyramid guidelines in right sheet margin, original gum with stamps lightly hinged. A scarce multiple in above average quality, VF **750.00**



- 425 ★ **#112b, 1925 5c Violet (Dry Printing; Redrawn Vertical Frameline)** A choice mint imperforate pair with full margins, lovely fresh colour, original gum with overall glazing, otherwise completely sound, a rare pair, VF, 2009 Greene cert. **3,000.00**



426



427



428

- 426 ★ **#112c, 1925 5c Violet (Dry Printing; Redrawn Vertical Framelines)** Lovely fresh mint example showing redrawn framelines on all four sides, hitherto unknown to us; precise centering, brilliant colour and impression with full unblemished original gum, never hinged. A choice stamp, XF NH, 2004 Greene cert. **195.00**
- 427 ★ **#112i, 1922-1925 5c Grey Violet (Wet Printing)** A choice centered mint single showing unusually full Type D lathework, brilliant fresh colour and clear impression, full immaculate original gum, never hinged. Full lathework is scarce on this stamp, XF NH (Catalogued as normal 60% strength). **180.00**
- 428 ★ **#112i, 1922-1925 5c Grey Violet (Wet Printing)** Very well centered mint example, gorgeous fresh colour and bright impression, with full immaculate original gum, never hinged. A desirable shade, VF+ NH, 2007 Greene cert. **165.00**



429



430

- 429 ★ **#112i, 112iii, 1924 5c Grey Violet (Wet Printing)** An attractive centered mint single showing the retouched vertical frameline in upper right spandrel, brilliant fresh colour on pristine fresh paper, with full pristine original gum, never hinged. VF NH, 2004 Greene cert. **270.00**
- 430 ★ **#112ii, 1922-1925 5c Rose Violet (Wet Printing)** Exceptionally well centered mint example of this sought-after scarcer shade, gorgeous fresh colour with balanced margins, full original gum, never hinged. A superb stamp, XF NH, 2007 Greene cert. **165.00**



- 431 ★ **#112v, 1922 5c Violet (Wet Printing)** Gorgeous fresh mint block of four with full pyramid lines in right margin, rich colour and full original gum, lightly hinged on upper right stamp leaving other three never hinged, scarcer than the thin paper variety, Fine LH, 2007 Greene cert. **500.00**



432



433



434

- 432 ★ **#113, 1918 7c Yellow Ochre (Wet Printing)** Exceptionally well centered mint single showing full Type B lathework, gorgeous fresh colour and with full original gum, attractive, XF OG **225.00**
- 433 ★ **#113, 1915-1918 7c Yellow Ochre (Wet Printing)** An outstanding mint example, well centered within uncommonly large margins, possessing lovely fresh colour on pristine paper, with full unblemished original gum, never hinged. A superb stamp, worthy of the finest collection, XF NH JUMBO GEM, 1992 Greene cert. **210.00**
- 434 ★ **#113a, 1915-1918 7c Deep Olive Bistre (Wet Printing)** A choice well centered mint example showing amazing rich colour and deep impression, possessing full original gum, never hinged. A nice shade, VF NH **210.00**



435



436

- 435 ★ **#113b, 1912 7c Straw (Wet Printing)** Remarkably well centered mint with unusually large margins for this stamp, intact perforations seldom seen on this first printing, lovely fresh colour, possessing full original gum, never hinged. This stamp is particularly tough to find in superior quality, XF NH, 1992 Greene cert. **900.00**
- 436 ★ **#113b + variety, 1913-1914 7c Deep Straw (Wet Printing)** A remarkable mint single in an unusual deeper shade of this first printing, full streaky original gum that is a common feature on the earliest Admiral printings; quite well centered and never hinged. A shade we have rarely seen and a great stamp for an advanced collection, VF NH **900.00**



437



438

- 437 ★ **#113c, 1914 7c Sage Green (Wet Printing)** A sought-after and very scarce mint shade, nicely centered, amazingly deep and true colour and with large part original gum, hinged. A distinctive shade that is missing from most advanced collections, VF, 1995 Greene cert. **600.00**
- 438 ★ **#113c + variety, 1914 7c Pale Sage Green (Wet Printing)** Extremely well centered mint single of this scarce shade with bright fresh colour, full original gum, lightly hinged, XF LH **600.00**



439



440

- 439 ★ **#113iii, 1918 7c Yellow Ochre (Wet Printing)** A selected mint example showing the distinctive retouched vertical frameline at upper right corner, very well centered and with lovely fresh colour on pristine fresh paper, possessing full immaculate original gum, never hinged. Seldom encountered in such premium quality, XF NH, 1994 Greene cert. **600.00**
- 440 ★ **#113iv, 1915-1918 7c Greenish Yellow (Wet Printing)** A marvelous and superbly centered mint example in a peculiarly bright shade, lovely and fresh, possessing full immaculate original gum, never hinged. A visually striking shade in exceptional quality, XF NH **900.00**



441



442



445

- 441 ★ **#114, 1926 7c Red Brown (Dry Printing)** An attractive and nicely centered mint example showing a strong and full Type D lathework, full original gum, faint hinge mark. An appealing lathework that is seldom seen full, scarcer than catalogues indicate, VF VLH **185.00**
- 442 ★ **#114, 1926 7c Red Brown (Dry Printing)** An appealing mint upper left corner example, very well centered with unusually large margins, deep rich colour on pristine paper, with full unblemished original gum, never hinged. A superb stamp for the meticulous collector, XF NH **90.00**



- 443 ★ **#114a, 1926 7c Red Brown (Dry Printing - Plate 7)** An exceptionally choice mint imperforate pair, full margins, lovely rich colour and sharp impression, possessing full pristine original gum, never hinged. Unlike most pairs this example is in an excellent state of preservation and is completely sound. A wonderful pair for the advanced collector, XF NH, 2009 Greene cert. **6,000.00**
- 444 ★ **#114b, 1924-1925 7c Red Brown (Wet Printing)** Very well centered mint example with deep rich colour on fresh paper, full immaculate original gum, never hinged. A choice stamp, XF NH
(Illustrated on Page 109) **120.00**
- 445 ★ **#114b, 1924-1925 7c Red Brown (Wet Printing)** Exceptionally well centered mint single with deep rich colour and showing usual strength Type D lathework, possessing full original gum, never hinged. Attractive and XF NH **120.00**



444



446



447



450

- 446 ★ **#114biv, 1924-1925 7c Red Brown (Wet Printing - Plate 7)** Extremely well centered mint single with deep rich colour and showing the diagonal line in "V" of "SEVEN" plate variety, gorgeous deep impression on fresh paper and possessing full immaculate original gum, never hinged. A well selected stamp, XF NH **150.00**
- 447 ★ **#114bv, 1924-1925 7c Red Brown (Wet Printing - Plate 8)** Mathematically centered mint example with balanced large margins, showing the diagonal line in "N" of "CENTS" plate variety, pristine fresh colour and paper and possessing full immaculate original gum, never hinged. An exceptional quality stamp, XF NH GEM, 1996 Greene cert. **150.00**



448



449

- 448 ★ **#114iii, 1926 7c Red Brown (Dry Printing) on Thin Paper** Especially choice mint example of this distinctive paper, well centered with large margins, gorgeous fresh colour and possessing full original gum, never hinged. A key stamp for completion of an Admiral collection, VF NH, 2005 Greene cert. **900.00**
- 449 ★ **#114iii, 1926 7c Red Brown (Dry Printing) on Thin Paper** A remarkable mint single showing Type D lathework of 80% strength (normal is 40%), fresh with full original gum, never hinged, negligible gum wrinkle in bottom selvedge mentioned for strict accuracy, a rare lathework that is seriously undercatalogued, F-VF NH, clear 1996 Greene cert. **450.00**
- 450 ★ **#114iv, 1926 7c Red Brown (Dry Printing - Plate 7)** Post office fresh and well centered mint single showing the diagonal line in "V" of "SEVEN" plate variety, with full unblemished original gum, never hinged. An especially choice example, XF NH **150.00**

Take advantage of our easy and convenient ways to place your bids.



Call us toll free in North America
Dial 1(800) 667-8267
or
Fax 1(888) 867-8267

For our overseas customers please use the following:
Phone 1(506) 548-8986 - Fax 1(506) 546-6627

You can also visit our Website www.easternauctions.com
E-Mail your bids to easternauctions@nb.aibn.com



451



453

- 451 ★ **#115, 1925 8c Blue (Dry Printing)** Extremely well centered mint single with "post office" fresh colour and large margins for the issue, with full original gum, never hinged. A choice stamp, XF NH JUMBO, 1992 Greene and 2009 PF certificates. **150.00**

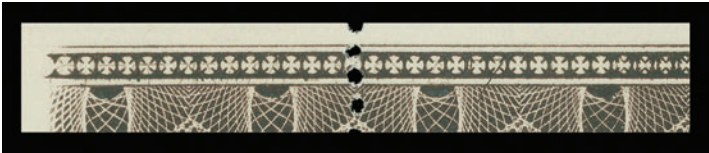


- 452 ★ **#115a, 1925 8c Blue (Dry Printing)** A pristine mint imperforate pair with full margins, lovely fresh rich colour and sharp impression, full unblemished original gum that has never been hinged. Rarely seen in sound condition, a wonderful item for the fastidious collector, XF NH, 2009 Greene cert. **6,000.00**

- 453 ★ **#115i, 1925 8c Light Blue (Dry Printing)** A beautiful selected mint single of this underrated shade, fresh pastel-like colour and possessing full unblemished original gum, never hinged. A nice stamp, VF+ NH **165.00**



- 454 ★ **#116, 1920 10c Brown Purple (Wet Printing)** An outstanding superbly centered mint block of four, radiant fresh colour and sharp impression on pristine fresh paper, showing nearly complete Type C lathework, full original gum lightly hinged at top, bottom pair and sheet margin at foot are never hinged. An absolute beauty and certainly one of the finest known Type C lathework multiples extant, XF VLH-NH **3,750.00**



- 455 ★ **#116, 1917 10c Plum (Wet Printing)** An impressive and unusually well centered mint horizontal strip of three, left stamp with natural straight edge shows portion of guide arrow and plate A7 imprint, right pair shows full Type A lathework (normal is 80%) with clear "OTTAWA - No - A7" plate imprint beneath, also a double lathework variety shows at right (latter variety not mentioned in accompanying certificate), full original gum, lightly hinged once on centre stamp only, other two are never hinged. A remarkable plate imprint lathework strip and a wonderful showpiece, VF (Plate number under lathework is listed but unpriced in Unitrade specialized catalogue; value is for stamps only, no premium added for lathework and varieties). 2006 Greene cert. **2,950.00**



456



457



458

- 456 ★ **#116, 1912-1920 10c Plum** An outstanding mint example that is remarkably well centered within four huge balanced margins, lovely deep rich colour and crystal clear impression on pristine fresh paper, full immaculate original gum, never hinged. A superb stamp in all respects which would be very difficult to improve upon. Deserving of the finest collection, XF NH JUMBO GEM, 1997 Greene and 2009 PF certificates (Graded XF-S 95). **1,200.00**
- 457 ★ **#116, 1918-1920 10c Plum (Wet Printing)** An exceptional lower right sheet mint example, precisely centered within large margins on pristine fresh paper and showing full Type B lathework, lovely fresh rich colour and possessing full original gum, lightly hinged. Seldom encountered in premium condition, XF LH, 1992 Greene cert. **1,125.00**
- 458 ★ **#116a, 1912 10c Reddish Purple (Wet Printing)** A well centered pristine mint example of this difficult early printing, showing plate number "1" and printing order "PO 86" imprint in top sheet margin, lovely true colour, full unblemished original gum, never hinged. A very nice first printing example of this key Admiral stamp, VF NH, 1992 Greene certificate for a pair. **1,350.00**

To avoid disappointment be sure to mail your bid sheet early.



459



461



462



460



464



465



466



468

- 459 ★ #117, 1922-1924 10c Deep Blue (Wet Printing) Mathematically centered mint example with an unusually deeper shade than usual on pristine fresh paper and possessing full original gum, never hinged. Another gem, XF NH **240.00**
- 460 ★ #117a, 1924-1925 10c Blue (Dry Printing) Precisely centered mint block of four with fresh radiant colour, possessing full immaculate original gum, never hinged. An attractive multiple in top-quality, XF NH **840.00**
- 461 ★ #117a, 1924 10c Blue (Dry Printing) Mint single showing Type D lathework of usual strength, pristine fresh and with full original gum, VF NH **250.00**
- 462 ★ #117a, 1924 10c Blue (Dry Printing) Exceptionally well centered mint example with large margins, gorgeous fresh colour and impression, with full original gum, never hinged. A superb stamp in top-quality, XF NH, 2009 PF cert. (Graded S 98). **210.00**



- 463 ★ **#117ii, 1922-1924 10c Light Blue (Wet Printing)** An impressive mint block of four, well centered and showing remarkably full Type D lathework in bottom margin, brilliant fresh colour and original gum, natural gum skips. A rarely found multiple displaying full lathework, missing from all but the most advanced Admiral collections, VF+ LH **3,000.00**
- 464 ★ **#117ii, 1922-1924 10c Light Blue (Wet Printing)** Exceptionally well centered mint block of four, brilliant fresh colour and pristine paper, full original gum, bottom pair never hinged, XF LH
(Illustrated on Page 112) **640.00**
- 465 ★ **#117ii, 1922-1924 10c Light Blue (Wet Printing)** Precisely centered and "post office" fresh mint example within well-balanced generous margins, brilliant colour and impression, with full unblemished original gum, never hinged. A superb stamp, XF NH
(Illustrated on Page 112) **240.00**
- 466 ★ **#118, 1925-1928 10c Bistre Brown (Dry Printing)** Mathematically centered mint block of four with beautiful colour, possessing full unblemished original gum, never hinged. A superb block, XF NH GEM
(Illustrated on Page 112) **720.00**



- 467 ★ **#118, 1925 10c Bistre Brown (Dry Printing)** An impressive well centered mint single showing full Type D lathework, pristine fresh colour and paper, possessing full original gum, very lightly hinged. One of the rarest of all Admiral lathework in superior quality, XF VLH, 1992 Greene cert. **3,750.00**

A CHOICE EXAMPLE OF THE RARE LATHEWORK ON THE TEN-CENT BISTRE WITH FULL ORIGINAL GUM. MUCH NICER THAN MOST THAT EXIST AND A WONDERFUL SHOWPIECE.



- 468 ★ **#118, 1925 10c Bistre Brown (Dry Printing)** A superior mint example, extremely well centered with balanced margins, lovely rich colour on pristine fresh paper and possessing full unblemished original gum, never hinged. A choice stamp, XF NH, 2009 PF cert. (Graded XF-S 95)

(Illustrated on Page 112) **180.00**



- 469 ★ **#118a, 1927-1928 10c Bistre Brown (Dry Printing - Plate 25)** A premium mint imperforate pair with large margins, gorgeous fresh colour and deep impression on pristine paper, very faint bend on right stamp mentioned for ultimate accuracy, full original gum, never hinged. A rare imperforate in superior condition to most that exist, VF NH, clear 2009 Greene cert. **6,000.00**



470



471



472

- 470 ★ **#118b, 1925 10c Yellow Brown (Dry Printing)** A remarkable mint single of this challenging early shade, exceptionally well centered with four balanced generous margins, brilliant fresh colour on pristine paper, full immaculate original gum, never hinged. A beautiful and sought-after shade in superior quality, XF NH GEM **210.00**

- 471 ★ **#119, 1924-1925 20c Olive Green (Dry Printing)** Extremely well centered and fresh mint single showing a full Type D lathework, with full original gum, lightly hinged. A most appealing example, XF LH **525.00**

- 472 ★ **#119, 1924-1925 20c Olive Green (Dry Printing)** A superbly centered mint example with brilliant colour and pristine fresh paper, possessing full unblemished original gum, never hinged. An attractive stamp in exceptional quality, XF NH GEM, 1996 Greene cert. **450.00**



- 473 ★ **#119a, 1925 20c Olive Green (Dry Printing - Plate 9)** Large margined imperforate mint pair with retouched vertical frameline in upper right spandrel, lovely fresh colour and sharp impression. A light horizontal crease almost entirely confined to the lower margin in no way detracts, with full original gum, never hinged. VF NH, 2009 Greene cert. **6,000.00**



- 474 ★ **#119b, 1913-1917 20c Sage Green (Wet Printing)** A well centered mint example of this elusive shade, bright fresh colour on pristine paper, possessing full unblemished original gum, never hinged. One of the key shades for completing the King George V Admiral Issue, VF NH, 1996 Greene certificate for a block of four from which it originates. **1,050.00**



475



476

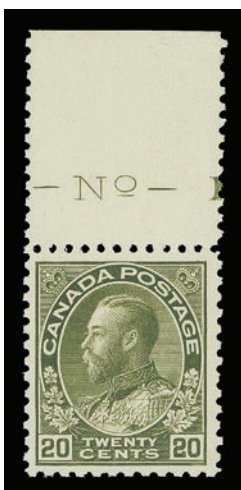
- 475 ★ **#119c, 1917 20c Deep Olive Green (Wet Printing)** A mint horizontal pair showing large portion of guide arrow, plate A5 imprint and type A lathework below, clearly showing "NO - A5" plate imprint underneath the lathework; pencil notation "19 Nov 20" in selvage, stamps are fresh and reasonably centered. An appealing lathework multiple, F-VF LH **650.00**
- 476 ★ **#119c, 1917 20c Dark Olive Green (Wet Printing)** An attractive mint single showing full Type A lathework, nicely centered with deep rich colour, full original gum, hinged in ungummed portion of selvage only leaving stamp never hinged, VF NH, 1997 Greene cert. **600.00**



- 477 ★ **#119c, 1912-1917 20c Dark Olive Green (Wet Printing)** A fabulous mint example, amazingly deep rich colour and strong impression on pristine fresh paper, extremely well centered and possessing full unblemished original gum, never hinged. A superior stamp with visual appeal, XF NH GEM, 1992 Greene certificate. **600.00**



- 478 ★ **#119d, 1912 20c Grey Green (First Dry Printing)** A remarkable mint block of four, well centered for this tough early printing, intact perforations, amazing rich colour and deep impression, possessing full immaculate original gum, never hinged. An exceedingly rare block to obtain in such nice quality, ideal for exhibition, VF NH **3,600.00**



- 479 ★ **#119d, 1912 20c Grey Green (First Wet Printing)** A desirable mint example showing portion of plate No - 1 imprint in top margin, well centered for this stamp and with full intact perforations, full original gum, lightly hinged in ungummed portion of sheet margin, stamp is never hinged. A key stamp, VF NH, 1996 PSE certificate for a pair from which it originates. **900.00**



- 480 ★ **#119iv, 1925 20c Olive Green (Dry Printing)** Exceptionally well centered mint example with balanced margins, brilliant fresh colour, shows the distinctive retouched vertical frameline in upper right spandrel, with full original gum, never hinged. An exceptional stamp, XF NH GEM, 2007 Greene cert. **450.00**



- 481 ★ **#120, 1925 50c Black Brown (Re-engraved; Dry Printing - Plate 4)** An outstanding mint example, precisely centered amidst oversized margins, lovely fresh colour and full unblemished original gum, never hinged. A superb stamp in all respects, XF NH JUMBO GEM, 1992 Greene and 2009 PF cert. (Graded S 98 J) **360.00**



- 482 ★ **#120a, 1912 50c Black (Wet Printing)** A remarkably well centered mint example with four large balanced margins, deep fresh colour with proof-like impression on pristine fresh paper and possessing full immaculate original gum, never hinged. An exceptional stamp in all respects; very difficult to obtain in such superior quality. XF NH GEM, 1994 Greene cert. **1,200.00**



- 483 ★ **#120b, 1925 50c Black Brown (Re-engraved; Dry Printing - Plate 4)** A pristine mint imperforate pair with full margins, gorgeous post office fresh colour, full original gum, never hinged. Rarely offered in sound condition and without the characteristic paper wrinkles and creases that plague this value, very few pairs exist in this quality, XF NH, 2009 Greene cert. **7,200.00**



484



486

- 484 ★ **#120i, 1917 50c Silver Black (Wet Printing)** Precisely centered mint example with large margins, beautiful colour and clear impression characteristic of this scarce printing, pristine fresh paper and full original gum, never hinged. Seldom encountered in such nice quality, XF NH, 2006 Greene cert. **1,200.00**



A TRULY STUNNING ADMIRAL LATHEWORK



- 485 ★ #120ii, 1923 50c Brown Black (Wet Printing - From Plate 3)** A fabulous mint example showing full Type D lathework, quite well centered with intense colour and deep impression on fresh paper, full original gum that is relatively lightly hinged. A first-class Admiral lathework rarity for the connoisseur. Full lathework on this value is practically unknown. VF LH, 1992 Greene cert.

Note: While researching this item and reviewing all of the important Admiral Issue collections sold in the past we were surprised to learn that even the best collections lacked an example of the fifty-cent with FULL LATHEWORK. We did note three blocks of four and a few singles with only faint to low strength impressions of the lathework. Of interest to the advanced collector of lathework -- the famous collections of Lussey (1981), Marler (1982; two sales), Jephcott (1990), Robert Bayes (1996) and Charkow (1995-1996; three sales) were not successful in securing an example of 100% lathework on the fifty-cent. The only other example of this rarity that we were able to locate is a mint block of four that is badly off-center, which is currently residing in a prominent collection. It is also interesting to note that full strength lathework on the fifty-cent is unreported in the extensive lathework census compiled by Glen Lundeen. (www.dglphilatelics.com/adm_lathe.html)

9,000.00

A STUNNING ADMIRAL LATHEWORK OF GREAT SIGNIFICANCE AND RARITY. ONE OF THE HIGHLIGHTS OF THIS COLLECTION AND A VERY IMPORTANT ADMIRAL SHOWPIECE.

- 486 ★ #120ii, 1923 50c Brown Black (Wet Printing) A well centered mint single with nice impression on fresh paper, full pristine original gum, never hinged. A tough stamp to find, VF NH, 1995 Greene cert. *(Illustrated on Page 117)* **900.00**



487



491

- 487 ★ #122, 1925 \$1 Orange (Dry Printing) Nicely centered mint single with fresh colour, minute toning at top, showing full Type D lathework, with full original gum, never hinged. An attractive lathework, VF NH, clear 2009 Greene cert. **600.00**



488



490

- 488 ★ #122, 1925 \$1 Orange (Dry Printing) An exceptional mint example, very well centered with very large margins, gorgeous post office fresh colour and razor-sharp impression on pristine fresh paper, possessing full immaculate original gum, never hinged. A visually stunning stamp, XF NH JUMBO, 1992 Greene and 2009 PF cert. (Graded XF 90 J) **450.00**



- 489 ★ #122a, 1925 \$1 Orange (Dry Printing) A lovely fresh imperforate mint pair with full margins, beautiful fresh colour on pristine fresh paper, faint vertical gum bend on right stamp, negligible for this rare imperforate, full original gum, never hinged. Certainly much nicer than most that exist, VF NH, 2009 Greene cert. **6,000.00**

- 490 ★ #122b, 1923 \$1 Deep Orange (Wet Printing) Very well centered mint example with lovely rich colour and deep impression on fresh paper, showing plate “NO. A-1” of imprint in top margin, full pristine original gum, never hinged. A difficult stamp to find, VF+ NH, 2009 Greene cert. **1,200.00**

- 491 ★ #122b, 1923 \$1 Deep Orange (Wet Printing) Mint wet printing single with Type D lathework, lovely rich colour, original gum with small hinge remnant. Scarce and undercatalogued, F-VF OG **400.00**



- 492 ☉ **#122biii, 1923-1925 \$1 Deep Orange (Wet Printing)** A nicely centered used block of four with characteristic deeper shade associated with this method of printing, showing full pyramid guidelines in left sheet margin, Kingston, Ontario Nov 1926 straightline cancellations, light crease in selvage mentioned for accuracy only. Pyramid guideline multiples on the One-dollar denomination are seldom seen and most of these are the dry printing, so to have this block postally used is quite a rarity. Ideal piece for exhibition, VF (Catalogue valuation reflects the dry printing graded as fine only) **600.00**

KING GEORGE V “ADMIRAL” COILS



493



494



495



496

- 493 ★ **#123, 1913 1c Blue Green (Wet Printing), Perf 8 Horizontally** Quite well centered mint coil pair, deep rich colour on pristine fresh paper and possessing full unblemished original gum, never hinged, VF NH **900.00**
- 494 ★ **#123i, 1913 1c Dark Green (Wet Printing), Perf 8 Horizontally** Exceptionally well centered paste-up pair, rare on this issue, intact perforations, lovely fresh colour and full pristine original gum, never hinged. A very difficult coil to obtain in premium quality, XF NH, 2009 Greene cert. **1,200.00**
- 495 ★ **#124, 1913 2c Carmine (Wet Printing), Perf 8 Horizontally** A well centered mint pair, gorgeous fresh colour and full intact perforations, immaculate original gum that is never hinged. Seldom encountered in such nice quality, VF+ NH **900.00**
- 496 ★ **#124i, 1913 2c Carmine (Wet Printing), Perf 8 Horizontally** Unusually well centered mint paste-up pair, brilliant colour and clear impression, full intact perforations, original gum, never hinged. An elusive item in this condition, XF NH, 2007 Greene cert. **1,200.00**



497



498

- 497 ★ **#125, 1912-1918 1c Green (Wet Printing), Perf 8 Vertically** Nicely centered and post office fresh mint coil pair, with full original gum, VF NH **200.00**
- 498 ★ **#125ii, 1912-1918 1c Blue Green (Wet Printing), Perf 8 Vertically** Exceptionally well centered mint pair, deep rich colour and clear impression on pristine paper, with full original gum, never hinged. A difficult coil pair in choice quality, XF NH **250.00**



499



500

- 499 ★ **#129i, 1918 3c Dark Brown, Perf 8 Vertically** A choice mint paste-up coil pair, exceptionally for these notoriously difficult coil variety, deep rich colour and with full original gum, XF NH **310.00**
- 500 ★ **#130b, 1925 3c Carmine, Die II, Perf 8 Vertically** Precisely centered and fresh mint coil pair of this key issue, “post office” fresh colour and impression, with full unblemished original gum, never hinged. It would be quite a challenge to locate a finer coil pair, XF NH **625.00**



- 501 ★ **#126c, 1924 1c Yellow, Die I (Wet Printing) Part Perforate Coils (Sheet Format)** An impressive mint block of four, nicely centered and showing a full Type B lathework, nicely centered with deep colour, full original gum, lightly hinged. VF LH **2,250.00**



- 502 ★ #128, 1922 2c Green (Wet Printing), Perf 8 Vertically Exceptionally well centered and fresh mint coil strip of four, lovely rich colour and impression on fresh paper, with full original gum, never hinged. A challenging coil strip to find in premium quality, XF NH **250.00**



503



504

- 503 ★ #128ai, 1924 2c Green (Wet Printing), Perf 8 Vertically Part Perforate Coils (Sheet Format) Precisely centered mint block of four showing usual strength Type D lathework in sheet margin, lovely fresh colour, with full original gum, hinged on top pair leaving bottom pair and sheet margin never hinged. XF OG, 2006 Greene cert. **1,875.00**
- 504 ★ #128ai, 1924 2c Green (Wet Printing), Perf 8 Vertically Part Perforate Coils (Sheet Format) Extremely well centered mint block of four, intact perforations, lovely fresh colour on pristine paper and with full immaculate original gum, never hinged. A tough multiple to find in choice condition, XF NH **1,750.00**



505



508

- 505 ★ #130, 1924 3c Carmine, Die I (Wet Printing), Perf 8 Vertically Extremely well centered mint coil pair, with lovely post office fresh colour on pristine paper, intact perforations and with full immaculate original gum, never hinged. XF NH **500.00**



506



507

- 506 ★ **#130a, 1924 3c Carmine, Die I (Wet Printing), Perf 8 Vertically Part Perforate Coils (Sheet Format)** A desirable mint block of four showing trace (as always) of Type D lathework in sheet margin, nice fresh colour and full original gum, lightly hinged on upper left stamp, leaving other stamps and bottom sheet margin never hinged. A scarce and key lathework, F-VF LH **1,500.00**
- 507 ★ **#130a, 1924 3c Carmine, Die I (Wet Printing), Perf 8 Vertically Part Perforate Coils (Sheet Format)** Exceptionally well centered mint block of four which is rarely seen of this elusive issue, gorgeous fresh colour on pristine paper and possessing full original gum, lightly hinged at top. A very attractive and key block of the Admiral issue, XF LH **1,200.00**
- 508 ★ **#130iii, 1925 3c Carmine, Die II (Dry Printing), Perf 8 Vertically** A choice mint paste-up coil pair, exceptionally well centered for this difficult issue, deep rich colour and strong impression, possessing full pristine original gum, never hinged. It would be a great challenge to find a finer example than the one offered here, XF NH *(Illustrated on Page 122)* **750.00**



- 509 ★ **#131-134, 1915-1924 1c-3c Admiral Coils, Perf 12 Horizontally** Very well centered mint set of pairs, all have lovely fresh colours and full pristine original gum, never hinged. Choice XF NH; 2c yellow green with 1978 Greene cert. **1,025.00**



- 510 ★ #131i-134i, 1915-1924 1c-3c Admiral Coils (Wet Printing), Perf 12 Horizontally A well centered mint set of four paste-up pairs, all with lovely fresh rich colours and possessing full original gum, 3c is lightly hinged, others never hinged. The key 2c yellow green is exceptionally centered and as nice as they come. VF-XF; 2005 Greene cert. for the 2c yellow green **1,185.00**



- 511 ★ #131, 131ii, 131iii, 1915 1c Dark Green and Blue Green (Wet Printing), Perf 12 Horizontally Nicely centered mint coil pairs of both shades plus blue green paste-up pair, all with lovely fresh colours and full original gum, never hinged. VF-XF NH **350.00**
- 512 ★ #131iv, 1918 (July) 1c Green (Wet Printing), Perf 12 Horizontally Experimental Toronto coil mint pair with large holes, well centered and choice, full original gum, never hinged. Most attractive, VF+ NH **375.00**
- 513 ★ #132iii, 1913 2c Rose Carmine (Wet Printing), Perf 12 Horizontally Exceptionally well centered coil mint pair with brilliant fresh colour and impression, possessing full immaculate original gum, never hinged. XF NH **275.00**

Fax your Bid(s) toll free in North America
Dial 1(888) 867-8267



- 514 ★ #135, 1917 3c Brown Fathers of Confederation An unusually well centered mint block of four, lovely fresh and bright colour, with full unblemished original gum, never hinged. A tough multiple to find with superior centering, VF NH **840.00**



515



516

- 515 ★ #135, 1917 3c Brown Fathers of Confederation Mathematically centered mint example with four large balanced margins, gorgeous fresh colour and crisp impression, possessing full pristine original gum, never hinged. A challenging stamp to obtain in such quality, XF NH GEM, 2004 Greene cert. **210.00**
- 516 ★ #135, 1917 3c Brown Fathers of Confederation A spectacular mint example, uncharacteristically well centered within massive oversized margins on all sides, beautiful fresh rich colour and full original gum. A visually appealing stamp exceptional in all respects, XF LH JUMBO GEM, 2009 Greene cert. **70.00**



X517



X518

- 517 ★ #136-138, 1924 1c, 2c & 3c Admiral, Imperforate Set of three imperforate pairs, all with large margins and full original gum, never hinged. XF NH **500.00**
- 518 ◎ #136-138, 1924 1c, 2c & 3c Admiral, Imperforate Set of three used pairs, 3c with light crease on left stamp, each with selected Port Renfrew, B.C. (JAN 5 25) split ring cancellation, VF **250.00**



- 519 ★ **#136, 1924 1c Yellow, Die I (Wet Printing), Imperforate** Pristine fresh and full margined mint Plate A179 block of twelve stamps, with full immaculate original gum, never hinged, XF NH **1,400.00**



521



520



522

- 520 ★ **#136, 1924 1c Yellow, Die I (Wet Printing), Imperforate** A superb mint block of four showing Type B lathework, brilliant fresh colour and full immaculate original gum, never hinged. XF NH, 2004 Greene cert. **2,250.00**
- 521 ★ **#136, 1924 1c Yellow, Die I (Wet Printing), Imperforate** Lovely fresh mint single, showing usual strength Type B lathework, with full original gum, VF NH **600.00**
- 522 ★ **#136, 1924 1c Yellow, Die I (Wet Printing), Imperforate** An appealing lower left corner margin single with Type D inverted lathework of usual strength, gorgeous fresh colour and full original gum, never hinged. Attractive and VF NH, 1996 Greene cert. **525.00**



523 ★ #137, 1924 2c Green (Wet Printing), Imperforate A desirable and choice mint Plate A188 block of twelve with full margins, pristine fresh and with full unblemished original gum, never hinged, XF NH
1,400.00



524 ★ #138, 1924 3c Carmine, Die I (Dry Printing) A superb mint Plate A126 block of twelve, with imprint above a full Type D lathework, full original gum, never hinged. As nice as they come, XF NH
1,345.00



525 ★ #138, 1924 3c Carmine, Die I (Dry Printing), Imperforate An exceptional mint pair with oversized margins showing full Type D lathework, full pristine original gum, never hinged. Most appealing, XF NH
120.00



526



527

- 526 ★ #138i, 1924 3c Carmine, Die I (Dry Printing), Imperforate Lovely fresh mint block of four showing full pyramid guidelines in left sheet margin, full original gum, never hinged, attractive and sought-after, XF NH **600.00**
- 527 ◎ #138ii, 1924 3c Carmine, Die I (Dry Printing), Imperforate Seldom seen used block of four showing "R-GAUGE" inscription and portion of guide arrow in right sheet margin, light Winnipeg CDS postmark, undercatalogued, VF **250.00**



- 528 ★ #139-140, 1926 (October) 2c on 3c Carmine, Die I (Dry Printing), Provisional Surcharges Premium mint examples of the one- and two-line surcharges, both centered with fresh colours and full unblemished original gum, never hinged. XF NH **300.00**



- 529 ★ #139c, 1926 (October 12) 2c on 3c Dark Carmine, Die II (Dry Printing) One-Line Provisional Surcharge A marvelous mint example of this notoriously difficult stamp, well centered within very large margins, amazing deep rich colour and possessing full original gum, never hinged. An elusive and forgotten stamp that is missing from most advanced King George V "Admiral" collections, especially scarce in such nice condition, VF NH, 1993 Greene cert. **2,500.00**
- 530 ★ #139i, 1926 (October 12) 2c on 3c Carmine, Die I (Dry Printing) One-Line Provisional Surcharge Well centered mint horizontal pair with natural straight edge at right, showing a dramatic slanting shifted surcharge, as a result the "2" is completely missing on the right stamp, full original gum, never hinged. A great item for the specialist, VF NH **450.00**
(Illustrated on Page 129)



530



531

- 531 ★ #139i, 1926 (October 12) 2c on 3c Carmine, Die I (Dry Printing) One-Line Provisional Surcharge Nicely centered and fresh mint single showing a dramatically shifted surcharge, full pristine original gum, never hinged, most attractive, VF NH, 1993 Greene cert. 225.00



532



535

- 532 ★ #139iii, 1926 (October 12) 2c on 3c Carmine, Die I (Dry Printing) One-Line Provisional Surcharge A superb mint block of four, extremely well centered and showing full pyramid guidelines in left sheet margin, with full pristine original gum, never hinged. A choice block that is very scarce in such premium quality, XF NH 1,200.00



533



534

- 533 ★ #140b, 1926 (October 16) 2c on 3c Carmine, Die I (Dry Printing) Two-Line Provisional Surcharge Well centered and fresh mint example showing the triple surcharge error, full original gum never hinged, signed K. Bileski in pencil, scarce, VF NH, 1996 Greene cert. 450.00
- 534 ★ #140c, 1926 (October 16) 2c on 3c Carmine, Die I (Dry Printing) Two-Line Provisional Surcharge A most appealing mint example showing the double surcharge error, one of which is inverted, full original gum, hinged in selvedge only leaving stamp never hinged, very scarce and especially appealing with sheet margin at top, VF, 1994 PSE cert. 675.00
- 535 ★ #140ii, 1926 (October 16) 2c on 3c Carmine, Die I (Dry Printing) Two-Line Provisional Surcharge Post office fresh mint block of four, showing neat pyramid guidelines in right margin, full original gum, lightly hinged, seldom seen so nice, VF LH, 2005 Greene cert. 500.00

Highlights



Lot 539



Lot 552



Lot 554

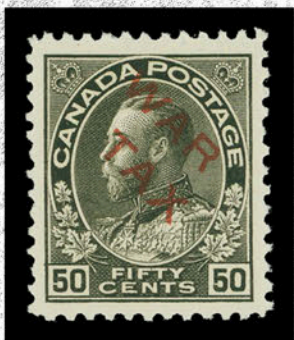


Lot 564

King George V Era and Back of the Book (Lot 536 - 623)



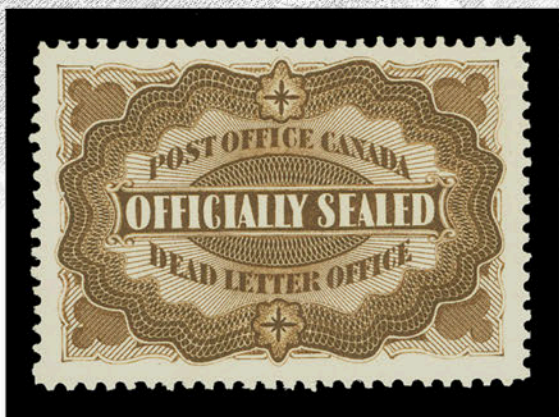
Lot 576



Lot 594



Lot 600



Lot 619



KING GEORGE V ERA



- 536 ★ **#145iii, 1927 12c Dark Blue Map of Canada** A superb mint example, imperforate vertically between stamp and sheet margin at right, well centered and fresh with full original gum never hinged. A rare perforation error with only ten known, XF NH GEM **1,875.00**



537



538

- 537 ★ **#157, 1929 20c Dark Carmine Harvesting Wheat** A spectacular mint example from the lower left sheet corner, exceptionally well centered within unusually large and well-balanced margins, gorgeous fresh colour and crisp impression, with full pristine original gum, never hinged. A superb stamp in all respects, XF NH GEM, 2005 Greene certificate for a block of four from which it originates. **200.00**
- 538 ★ **#158, 1929 50c Bluenose** A post office fresh and very well centered mint example, brilliant fresh colour and with sharp impression and possessing full unblemished original gum, never hinged. VF+ NH **700.00**



- 539 ★ **#158iii, 1929 50c Bluenose** An exceptional mint example of the elusive and sought-after "Man on the Mast" plate variety (Position 58), unusually well centered for this with "post office" fresh colour and crisp impression on pristine fresh paper and possessing full unblemished original gum, never hinged. Without question this is the finest example of this very scarce variety we have ever had the pleasure to offer, XF NH GEM, 1991 Greene cert. **4,000.00**



540



541

- 540 ★ **#159, 1929 \$1 Olive Green Parliament** An extremely well centered mint example of this challenging stamp, lovely fresh colour and impression on pristine paper, with full original gum, never hinged. Tough to find in such superior quality, XF NH, 1993 Greene cert. **900.00**
- 541 ★ **#159, 1929 \$1 Olive Green Parliament** A stunning mint example possessing the largest possible margins for this denomination, unusually well centered, pristine fresh colour and full original gum that has been very lightly hinged. An impressive stamp which would be virtually impossible to improve on, XF VLH JUMBO, 1990 Greene cert. **450.00**



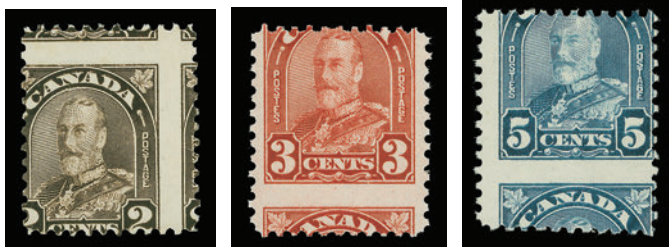
- 542 ★ **#159iii, 1929 \$1 Bronze Green Parliament** A well centered single, brilliant fresh colour and sharp impression on pristine fresh paper and possessing full immaculate original gum, never hinged. A nice stamp that is missing from many collections, VF NH, 2003 Greene cert. **1,000.00**



- 543 ★ **#160-161, 1929 1c and 2c King George V "Scroll" Coil, Perf 8 Vertically** Extremely well centered mint set of two coil pairs, both with fresh colours and with full pristine original gum, never hinged. VF-XF NH **440.00**



- 544 ★ **#160i-161i, 1929 1c and 2c King George V "Scroll" Coil, Perf 8 Vertically** Set of two mint paste-up coil pairs, very well centered for this and with fresh colours and full original gum, never hinged. VF NH **550.00**



- 545 ★ #166, 167, 170 + variety, 1930-1931 2c Dark Brown, 3c Deep Red & 5c Dull Blue King George V "Arch" Issue, Perf 11 Neat lot of three mint singles showing dramatic perforation shifts. A striking group, Mint NH **Est. 150.00**



546



547

- 546 ★ #176, 1930 50c Dull Blue Grand Pré Extremely well centered mint example with "post office" fresh colour on pristine paper, with full original gum, never hinged. A choice stamp, XF NH, 1993 Greene cert. **600.00**

- 547 ★ #177, 1930 \$1 Dark Olive Green Mount Edith Cavell A stunning mint example of this key denomination, displaying enormous margins and exceptional centering, gorgeous fresh colour and sharp impression on pristine paper, with full original gum, never hinged. A wonderful stamp with much visual appeal, XF NH JUMBO, 1993 Greene and 2009 PF certificates (Graded XF-S 95 J) **600.00**



- 548 ★ #180iii, 181iii, 182iii, 1930-1931 2c Dull Green, 2c Deep Red & 2c Dark Brown King George V "Arch" Coil, Perf 8½ Vertically Well centered mint coil strips of four with vertical guideline at centre and showing "Cockeyed King" plate variety on second stamp from left; fresh colours and with full original gum, never hinged. Seldom seen, VF NH **940.00**



- 549 ★ #191ii, 191aii, 1932 3c on 2c Deep Red, Die II Provisional Surcharge Mint single, centered low with major surcharge shift positioned at top, full original gum, never hinged; and another mint example, die I, well centered with surcharge shifted to centre, lightly hinged. An attractive duo, Fine-VF **275.00**



- 550 ★ #208i, 1934 3c Jacques Cartier Nicely centered and lovely fresh mint example showing the elusive "burr on shoulder" plate variety (Plate 2 Right; Position 2), with full pristine original gum, never hinged. An appealing stamp, VF NH **300.00**



- 551 ★ #208iv, 1934 3c Jacques Cartier Well centered mint horizontal strip of four showing wide gutter margin variety, full original gum, never hinged, scarce in choice condition, VF+ NH **800.00**



- 552 ★ #216i, 1935 13c Dark Blue Silver Jubilee Well centered mint single showing the very scarce "Shilling Mark" plate variety (Plate 1 UR, Pos. 78), lovely fresh colour with full pristine original gum, never hinged. A most appealing example of seldom offered variety, VF NH **1,200.00**



- 553 ★ #219c, 1935 3c Dark Carmine King George V A remarkably well centered printed on the gum side error, rarely seen so nice, XF NH, 1992 Greene cert. **600.00**



- 554 ★ #223ii, 1935 10c Carmine Rose RCMP An especially choice and unusually well centered mint example of the elusive "broken leg" plate variety (Position 48), sheet margin at foot, brilliant and fresh with full immaculate original gum, never hinged. A rare King George V era plate variety that is among the most keenly sought-after of all Canadian varieties; centering is by far superior to most we have seen, a wonderful stamp, XF NH, 1994 Greene cert. **3,750.00**



- 555 ★ #226i, 1935 50c Dull Violet Parliament, Victoria, B.C. Right sheet margin mint horizontal pair, nicely centered and fresh, showing the Major Re-entry in "CANADA" (Plate 1 LR; Position 25) on right stamp, with full original gum, never hinged, choice and VF NH **390.00**

AIRPOST



556



557

- 556 ★ #C3b, 1932 (February 22) 6c on 5c Brown Olive Quite well centered mint example of the double surcharge error, fresh with full original gum, very lightly hinged. Much nicer than the few we have seen, F-VF VLH (Catalogue valuation is for fine only; unreported with VF centering), 2009 Greene cert. **850.00**
- 557 ★ #C3c, 1932 (February 22) 6c on 5c Brown Olive An impressive and extremely well centered mint example showing the scarce triple surcharge error, large margins and fresh colour, possessing full original gum, never hinged. One of the nicest examples of this error available, XF NH, 1997 Greene certificate for a pair from which it originates. **750.00**

SPECIAL DELIVERY



558



559

- 558 ★ **#E1, 1898 10c Blue Green** Exceptionally well centered mint example within four balanced large margins, lovely fresh colour on pristine paper, and full original gum, never hinged. A very difficult stamp to acquire in such superior quality, XF NH GEM, 1991 Greene cert. **450.00**
- 559 ★ **#E1a, 1898 10c Green** Superbly centered mint example with "post office" fresh colour and razor-sharp impression on pristine paper, with full original gum, never hinged. XF NH, 2004 Greene cert. **450.00**



560



561

- 560 ★ **#E1ii, 1898 10c Blue Green "No Shading in Value Tablets"** Nicely centered mint example of this challenging stamp, brilliant fresh colour and crisp impression on fresh paper, possessing full immaculate original gum. VF NH, 1994 Greene cert. **600.00**
- 561 ★ **#E1iv, 1898 10c Deep Blue Green** An exceptional mint stamp, superbly centered with uncharacteristically large margins, rich colour on pristine fresh paper, possessing full original gum, hinged. A visually striking example of this scarce shade, XF OG JUMBO, 1995 Greene cert. **250.00**



562



563

- 562 ★ **#E2, 1926 20c Carmine (Dry Printing)** Very well centered post office fresh mint example, with proof-like impression on pristine fresh paper, with full immaculate original gum, never hinged. A choice stamp, VF NH **450.00**
- 563 ★ **#E2a, 1922-1926 20c Scarlet (Wet Printing)** Mathematically centered with lovely rich colour and crisp impression, pristine original gum, never hinged. A most attractive example of this challenging stamp, XF NH, 1995 Greene cert. (as old number E2i) **750.00**



- 564 ★ #E2ii, 1926 20c Scarlet (Dry Printing) An impressive mint lower left corner margin single imperforate horizontally between stamp and sheet margin at foot, lovely fresh colour and full original gum, lightly hinged. This is the only known example of this major error. An essential showpiece for the advanced Special Delivery issue collector, F-VF LH (Catalogue valuation irrelevant for a UNIQUE item), 1996 PSE cert. **2,000.00**



- 565 ★ #E9, 1939 10c on 20c Dark Carmine Surcharge A mesmerizing mint example, exceptionally well centered within "sidewalk" margins, pristine fresh colour and paper with full immaculate original gum, never hinged. We are confident in saying that no finer example can exist, XF NH GEM JUMBO **21.00**

REGISTRATION



566



567

- 566 ★ #F1, 1875-1887 2c Orange on Vertical Wove Paper, Perf 12 Exceptionally well centered mint single with very bright colour and impression on pristine paper, possessing full immaculate original gum, never hinged. An appealing stamp in premium quality, XF NH GEM, 1996 Greene cert. **450.00**
- 567 ★ #F1a, 1889 2c Scarlet Vermilion on Vertical Wove Paper, Perf 12 Superbly centered mint example of this appealing shade, beautiful proof-like impression, with full brownish original gum, never hinged. An attractive printing in choice condition and ideal for the specialist, XF NH JUMBO, 2009 Greene cert. **750.00**



568



569

- 568 ★ #F1a, 1875-1893 2c Vermilion on Horizontal Wove Paper, Perf 12 Very well centered with oversized margins, lovely rich colour on pristine fresh paper, possessing full yellowish original gum, never hinged. A beautiful shade in choice condition, VF+ NH, 1999 PF cert. **750.00**
- 569 ★ #F1b, 1888 2c Rose Carmine (Aniline Ink) on Horizontal Wove Paper, Perf 12 Well centered mint example with unusually bright fresh colour and impression on fresh paper, with full original gum, never hinged. A striking scarce shade for the advanced collector, VF NH, 2007 Greene certificate for a block of four from which it originates. **1,500.00**



- 570 ★ #F1b, 1888 2c Rose Carmine (Aniline Ink) on Vertical Wove Paper, Perf 12 A stunning mint example of this scarcer shade, precisely centered with balanced large margins, deep rich colour on pristine paper, with full unblemished original gum, never hinged. A superb stamp with physical attributes that would satisfy the perfectionist, certainly among the finest we have seen, XF NH JUMBO, 2000 PF and 2009 Greene cert. **1,500.00**



571



572

- 571 ★ #F1b, 1888 2c Deep Rose Carmine on Horizontal Wove Paper, Perf 12 An extremely well centered mint example showing an amazing dark (almost red) shade, pristine fresh paper, full original gum slightly disturbed from adherence. A most appealing and rarely seen shade, XF OG, 1992 Greene cert. **500.00**
- 572 ◎ #F1diii, 1875-1887 2c Orange on Horizontal Wove Paper, Perf 12x11½ A centered used single combining the scarce perforation with the distinctive "burr" plate variety at upper right corner. VF and very scarce, 2008 Greene cert. **Est. 250.00**



- 573 ★ #F1i, 1875-1893 Orange Red on Vertical Wove Paper, Perf 12 Nicely centered mint single with gorgeous fresh colour, with full immaculate original gum, never hinged, VF NH, 2005 Greene for a block of ten from which it originates. **510.00**



574



575

- 574 ★ #F2, 1875-1893 5c Dark Green on Vertical Wove Paper Well centered and fresh mint example with full original gum, never hinged. An attractive stamp, VF NH, 1995 Greene cert. **600.00**
- 575 ★ #F2b, 1875-1893 5c Yellow Green on Vertical Wove Paper, Perf 12 Extremely well centered mint single, a brilliant fresh example of this distinctive shade, with full original gum, very lightly hinged. A choice stamp, XF, 1992 Greene cert. **320.00**



- 576 ★ #F3, 1875-1876 8c Blue on Vertical Wove Paper, Perf 12 A spectacular upper left corner mint single showing full "EIGHT" counter imprint, exceptionally well centered, lovely fresh vibrant colour on immaculate paper, possessing full white streaky original gum characteristic of this value, never hinged. A superb stamp in all respects, XF NH GEM, 1996 Greene cert. **2,800.00**

A REMARKABLY WELL CENTERED MINT NEVER HINGED EXAMPLE OF THIS DIFFICULT AND KEY EIGHT-CENT REGISTRATION, WITH STRIKING VISUAL APPEAL RESULTING FROM ITS SHEET POSITION AND ADDED PLATE IMPRINT. A MAGNIFICENT SHOWPIECE AND WORTHY OF THE FINEST COLLECTION.



- 577 ★ #F3ii, 1875-1876 8c Blue on Vertical Wove Paper, Perf 12 A well centered and very scarce mint example showing an horizontal guideline through "I" of "EIGHT" at left (Position 33), with large part original gum, XF, 1991 Greene cert. **1,000.00**



- 578 ★ #F3iii, 1875-1876 8c Blue on Vertical Wove Paper, Perf 12 Well centered mint example showing the elusive horizontal guideline through "E" and "T" of "CENTS" at right ending above and below "D" respectively of "REGISTERED" (Position 32), disturbed original gum. A rarely offered plate variety on this key Registration Letter stamp, VF+, 1998 Greene cert. **1,000.00**

POSTAGE DUE



579



580

- 579 ★ **#J2, 1917 2c Violet (Wet Printing - Plate 3) on Medium Wove Paper** A brilliant centered mint single showing full Type A lathework at left, possessing full pristine original gum, never hinged. An elusive lathework stamp especially in choice quality, VF NH **2,000.00**
- 580 ★ **#J2a, 1924 2c Violet (Wet Printing - Plate 4) on Thin Paper** A beautiful mint example, nicely centered, showing full Type D lathework at left, deep rich colour on pristine fresh paper and full original gum, never hinged. A scarce lathework stamp, VF NH **1,200.00**



- 581 ★ **#J4iii, 1924 5c Violet (Wet Printing) on Thin Paper** A nicely centered mint block showing full pyramid guidelines in margin at top, full original gum, faint glazed line on top pair from a mount, otherwise never hinged and seldom seen, VF (Catalogue value as hinged only) **300.00**



582



X583

- 582 ★ **#J5, 1928 10c Violet (Dry Printing)** An exceptionally well centered mint example of this difficult stamp, "post office" fresh colour and sharp impression, with full unblemished original gum, never hinged. A superb stamp, XF NH **260.00**
- 583 ★ **#J6-J10, 1930-1932 1c-10c Dark Violet Second Postage Due Issue** Well selected and fresh mint set of five stamps, very well centered and with full pristine original gum, never hinged. Seldom seen so nice, VF-XF NH **520.00**



WAR TAX



584



586

- 584 ★ **#MR1, 1917 1c Green (Wet Printing)** Nicely centered and post office fresh mint single showing full Type B lathework, possessing full unblemished original gum, never hinged. A choice stamp, VF NH **120.00**



585



587



588

- 585 ★ **#MR1, 1915-1917 1c Green (Wet Printing)** Very well centered mint single with large margins and brilliant fresh colour, full unblemished original gum, never hinged. VF NH **105.00**
- 586 ★ **#MR2, 1917 2c Carmine (Wet Printing)** Nicely centered mint single showing full Type B lathework, with full pristine original gum, never hinged, attractive, VF NH **160.00**
- 587 ★ **#MR2, 1915-1917 2c Carmine (Wet Printing)** Exceptionally well centered within lavish margins, deep colour on pristine fresh paper, with full original gum, never hinged. A superb stamp, XF NH GEM **105.00**
- 588 ★ **#MR2a, 1915-1917 2c Rose Carmine (Wet Printing)** Precisely centered mint example, gorgeous fresh and brilliant colour, full immaculate original gum, never hinged. XF NH **135.00**



- 589 ★ **#MR2B, 1915 5c Blue "WAR TAX" Overprint in Black (Wet Printing)** A remarkably well centered mint example of this tremendously difficult stamp, brilliant fresh colour and clear impression on pristine fresh paper, possessing full original gum that has never been hinged. A wonderful and uncharacteristically well centered example of this key Admiral issue, among the toughest to obtain in such premium quality. VF+ NH GEM, 1997 and 2001 Greene certificates. **1,200.00**



590



593

- 590 ★ #MR2Bi, 1915 5c Blue "INLAND REVENUE WAR TAX" Overprint in Black (Wet Printing) Unusually well centered mint example of this elusive stamp, gorgeous fresh colour and on pristine fresh paper, full unblemished original gum, never hinged. A difficult stamp to locate in premium quality, VF NH **775.00**



- 591 ★ #MR2C, 1915 20c Olive Green "WAR TAX" Overprint in Black (Wet Printing) A superb mint example with exceptionally fresh colour and precisely centering, full immaculate original gum, never hinged, XF NH GEM, 2001 Greene cert. **450.00**



- 592 ★ #MR2Ci, 1915 20c Olive Green "INLAND REVENUE WAR TAX" Overprint in Black (Wet Printing) An exceptional mint block of four, uncharacteristically well centered for the issue, with deep rich colour on pristine fresh paper and possessing full immaculate original gum, never hinged. XF NH GEM **1,800.00**
- 593 ★ #MR2Ci, 1915 20c Olive Green "INLAND REVENUE WAR TAX" Overprinted in Black (Wet Printing) An exceptionally well centered mint example of this elusive stamp, deep vibrant colour and strong impression on pristine fresh paper, with full immaculate original gum, never hinged. Seldom encountered in such superior quality, XF NH GEM **450.00**



- 594 ★ #MR2D, 1915 50c Black "WAR TAX" Overprinted in Red (Wet Printing)** A magnificent mint example of this difficult stamp, uncharacteristically well centered for the issue, brilliant fresh colour and very clear impression on fresh paper and possessing full immaculate original gum that has never been hinged. Easily among the toughest of all King George V Admiral issues to find in superb quality, XF NH GEM, 2001 Greene cert. **1,400.00**

A SUPERB MINT NEVER HINGED EXAMPLE OF THE FIFTY CENT ADMIRAL WAR TAX, A RARELY SEEN HIGH QUALITY STAMP THAT IS MISSING FROM MOST ADVANCED COLLECTIONS AND THAT IS KEENLY SOUGHT-AFTER.



595



596



598

- 595 ★ #MR3, 1916 2c+1c Carmine, Die I (Wet Printing), Perf 12** A stunning mint example, extremely well centered within massive-sized margins, deep colour and full unblemished original gum, never hinged. An outstanding quality stamp, XF NH JUMBO GEM **150.00**
- 596 ★ #MR3a, 1916 2c+1c Carmine, Die II (Wet Printing), Perf 12** Very well centered mint example of this scarcer die, brilliant fresh colour in an unusual shade for this, full original gum, never hinged. VF+ NH, 1995 Greene cert. **750.00**



- 597 ★ #MR3b, 1916 2c+1c Rose Red, Die I (Wet Printing), Perf 12** A nicely centered mint block of four with beautiful rich colour, possessing full immaculate original gum, never hinged. A superb multiple in a most appealing shade, XF NH **720.00**
- 598 ★ #MR3b, 1916 2c+1c Rose Red, Die I (Wet Printing), Perf 12** Precisely centered mint example with the distinctive rose shade, bright fresh colour and with full immaculate original gum, never hinged. A nice example in premium quality, XF NH **180.00**



599



601

- 599 ★ #MR4, 1917 2c+1c Brown, Die II (Wet Printing), Perf 12 Mint lower left corner block showing full Type A lathework, portion of plate inscription "OTTA" is visible under lathework below stamp 92, fresh colour and with full original gum, never hinged. A rare lathework multiple ideal for the specialist, F-VF NH, 2006 Greene cert. **1,500.00**



- 600 ★ #MR4, 1917 2c+1c Brown, Die II (Wet Printing - Plate 49), Perf 12 An impressive mint example of the exceptionally rare Type B inverted lathework, full strong impression, well centered with lovely fresh colour, original gum, small hinge remnant. Among the rarest of all King George V Admiral lathework stamps, VF OG, 2005 Greene cert. **1,500.00**

A VERY RARE LATHEWORK THAT IS MUCH UNDERVALUED. NEITHER OF THE FAMOUS MARLER AND JEPHCOTT COLLECTIONS CONTAINED AN EXAMPLE OF THE TYPE B INVERTED.

- 601 ★ #MR4, 1917 2c+1c Brown, Die II (Wet Printing), Perf 12 Well centered mint example with bright fresh colour and showing full Type A lathework, with pristine original gum, never hinged, attractive and VF NH **160.00**



602



606



605



603



604

- 602 ★ #MR4, 1916-1918 2c+1c Brown, Die II (Wet Printing), Perf 12** Exceptionally well centered with deep rich colour, possessing lavish margins and full unblemished original gum, never hinged. A superior quality stamp, XF NH GEM **90.00**
- 603 ★ #MR4a, 1916 2c+1c Dark Brown, Die I (Wet Printing), Perf 12** Nicely centered mint example for this key stamp, characteristic deeper colour associated with the issue, possessing full pristine original gum, never hinged. An attractive example of this rare and sought-after stamp, much nicer than the vast majority of examples we have seen in the past, VF NH, 1995 Greene cert. **2,400.00**
- 604 ★ #MR4a, 1916 2c+1c Brown, Die I (Wet Printing), Perf 12** A spectacular mint example of this elusive die, unusually well centered with rarely seen oversized margins for this issue, lovely fresh colour and full original gum, lightly hinged. A marvelous stamp, VF LH JUMBO, 1994 Greene cert. **800.00**
- 605 ★ #MR4b, 1916-1917 2c+1c Yellow Brown, Die II (Wet Printing), Imperforate** Pristine fresh and full margined imperforate pair, ungummed as issued, XF **250.00**
- 606 ★ #MR4i, 1917-1918 2c+1c Yellow Brown, Die II (Wet Printing), Perf 12** An appealing mint single, nicely centered with lovely fresh colour and showing complete Type B lathework, with full original gum, never hinged. A beautiful lathework stamp, VF NH JUMBO **160.00**



607



608

- 607 ★ #MR5, 1916 2c+1c Carmine, Die I (Wet Printing), Perf 12x8** A stunning mint example with oversize wide margins, well centered, deep rich colour on pristine fresh paper, full immaculate original gum, never hinged. A choice stamp, VF NH JUMBO, 1994 Greene cert. **240.00**
- 608 ★ #MR5, 1916 2c+1c Carmine, Die I (Wet Printing), Perf 12x8** A fabulous mint example, exceptionally well centered with large margins around, full intact perforations, fresh colour and large part original gum. A superb stamp with much visual appeal, XF JUMBO GEM, 1992 Greene cert. **80.00**



609



610



611

- 609 ★ **#MR6ii, 1916 2c+1c Rose Carmine, Die I (Wet Printing), Perf 8 Vertically** A superb coil mint pair, exceptionally well centered for this challenging issue, intact perforations and brilliant fresh colour on pristine paper, with full original gum, left-hand stamp never hinged. Seldom encountered in such nice quality, XF LH, 1994 Greene cert. **900.00**
- 610 ★ **#MR6ii, 1916 2c+1c Rose Carmine, Die I (Wet Printing), Perf 8 Vertically** Extremely well centered coil mint single, gorgeous fresh colour and sharp impression, with full pristine original gum, never hinged. A scarce coil issue with such precise centering, XF NH, 1995 Greene cert. **675.00**
- 611 ★ **#MR6iii, 1916 2c+1c Rose Carmine, Die I (Wet Printing), Perf 8 Vertically** A most appealing mint paste-up coil pair in an unusual paler shade, unusually well centered, possessing full original gum, never hinged. Rarely seen and much superior to the others that we have handled, missing from even advanced Admiral collections, VF NH, 2005 Greene cert. **1,500.00**



612



613

- 612 ★ **#MR7, 1916-1918 2c+1c Dark Brown, Die II (Wet Printing), Perf 8 Vertically** A very well centered mint pair with intact perforations and rich colour, full immaculate original gum, never hinged. Difficult to find in such premium quality, VF NH **360.00**
- 613 ★ **#MR7i, 1916-1918 2c+1c Dark Brown, Die II (Wet Printing), Perf 8 Vertically** Extremely well centered mint paste-up pair, deep rich colour and clear impression, possessing full unblemished original gum, never hinged. XF NH **450.00**



614



615

- 614 ★ **#MR7iii, 1916 2c+1c Yellow Brown, Die I (Wet Printing), Perf 8 Vertically** Mathematically well centered mint coil pair with gorgeous bright fresh colour, full unblemished original gum, never hinged. A choice pair, ideal for the meticulous collector, XF NH GEM, 2009 Greene cert. **1,500.00**
- 615 ★ **#MR7iv, 1916 2c+1c Yellow Brown, Die I (Wet Printing), Perf 8 Vertically** A very scarce mint paste-up pair, exceptionally well centered for this, intact perforations and brilliant fresh colour, with full original gum, never hinged, negligible tiny stain on reverse of left-hand stamp, otherwise XF NH, 2005 Greene cert. **1,800.00**



OFFICIAL OVERPRINTS AND OFFICIALLY SEALED



- 616 ★ #O1/EO2, 1949-1953 "O.H.M.S." and "G" Official Overprints Clean mint collection displayed on two stockpages, all fresh and well centered with full original gum, never hinged. Includes O1-O11, CO1, EO1, O1i-O4i, O21-O25, O27, O32, CO2 and EO2. All VF NH (Unitrade \$1,420) **Est. 500.00**



- 617 ★ #O6a, 1949-1950 10c Great Bear Lake "O.H.M.S." Official Overprint Lower left mint plate no. 2 block of four, well centered and fresh, showing the missing period after "S" (Position 47) overprint variety, choice, VF NH **450.00**



- 618 ★ #O9a, 1949-1950 50c Lumbering "O.H.M.S." Official Overprint Lower left mint plate block of four, well centered and fresh, showing the missing period after "S" (Position 47), with full original gum, never hinged. A scarce and sought-after KGV era plate multiple, VF NH **3,200.00**

**AN EXCEEDINGLY RARE
MINT NEVER HINGED EXAMPLE**



- 619 ★ **#OX1, 1879 Yellow Brown Officially Sealed, Perf 11½x12** A phenomenal mint example possessing superior centering, deep fresh colour and clear impression, full pristine original gum that is NEVER HINGED. A condition rarity stamp, in fact one of the very rarest Canadian stamps in this quality. This is the first time we have had the pleasure to offer a Very Fine mint Never Hinged example. 1993 Greene certificate photocopy for a block of four from which it originated. **1,600.00**

IN OUR OPINION THE 1879 OFFICIALLY SEALED IS THE RAREST OF ALL "BACK-OF-BOOK" AND POST-SMALL QUEEN ERA STAMPS TO OBTAIN IN MINT NEVER HINGED CONDITION. IT IS SO RARE, EVEN THE UNITRADE SPECIALIZED CATALOGUE COMMENTED AS A FOOTNOTE: "VF-NH EXAMPLES OF OX1 ARE EXTREMELY RARE (IF THEY INDEED EXIST)." ONE OF THE HIGHLIGHTS OF THE COLLECTION.



620



621

- 620 ★ **#OX2, 1902 Black Officially Sealed Victoria on Thick Bluish Wove Paper** A very attractive EXAMPLE with post office fresh colour, possessing full original gum, never hinged, negligible gum bend of no importance for this stamp, one of the very few known never hinged examples, VF NH, clear 1999 CPES cert. **1,950.00**
- 621 ★ **#OX3, 1907 Black Officially Sealed Victoria on Medium White Wove Paper** Extremely well centered mint example with beautiful and fresh colour on pristine paper, with full unblemished original gum, never hinged. Tough to find in premium quality, XF NH, 1994 Greene cert. **1,950.00**



- 622 ★ **#OX4, 1913 Brown Black Officially Sealed** Very well centered and fresh mint example, gorgeous colour and sharp impression, possessing full unblemished original gum, never hinged, seldom seen so nice, VF+ NH, 1994 Greene cert. **200.00**

BALANCE OF THE COLLECTION

- 623 ★◎ Displayed on stockpages, from small Queen to Back-of-Book issues. Noted strong range of Admirals and later KGV era, with majority being mint NH, several earlier issues with certificates. Routinely VF throughout and well worth a look. *(Not Illustrated)* **Est. 1,500.00+**

**END OF AUCTION
THANK YOU**

THE PLACING OF A BID SHALL CONSTITUTE ACCEPTANCE OF THE CONDITIONS OF SALE

BIDDING

1. All bids are per lot, as numbered in the catalogue. Eastern Auctions Ltd. reserves the right to withdraw any lot prior to sale, to divide a lot or to group two or more.
2. The highest bidder shall prevail at one advance over the next highest bid. Should a dispute arise between bidders, the decision of the auctioneer as to the successful bidder or the re-offering or resale of the lot in dispute shall rest entirely in the judgment of the auctioneer. **On all lots sold a commission of 15% on the hammer price will be payable by the buyer.** The auctioneer shall regulate the bidding and reserves the right to refuse any bid believed by him not to be made in good faith.

PAYMENT FOR PURCHASES

3. **U.S. funds are acceptable only at the equivalent amount shown on the invoice.** Visa and MasterCard are accepted at no extra charge if you include the information on your bid sheet.
4. Payment for lots, including those on which opinions are desired under Condition of Sale 8, shall be made as follows:

A successful mail bidder will be notified of lots purchased and must remit before the lots are sent. A person known to us, or who furnishes satisfactory references, may at our option have purchases forwarded for immediate payment. Delivery will be to the address on the bid sheet. Proof by receipt of sending at the advised address shall constitute delivery. Postage and insurance are payable by the buyer.
5. Title shall not pass to the buyer until Eastern Auctions Ltd has received full payment.
6. Buyers agree to pay for lots as specified above and no credit is extended, a late payment charge of 2% per month is added to overdue payments, minimum \$5.00.

QUALITY AND AUTHENTICITY

7. Each lot is sold as genuine and correctly described based on individual description as modified by any specific notations in this catalogue including (but not restricted to) “Key to Cataloguing”.
 - (a) **QUALITY.** Any lot, description of which is incorrect, is returnable within forty-five days from closing date of auction. If the opinion of a mutually acceptable authority is desired, this period will be extended as noted in Condition 8. All disputed lots must be returned intact in the condition received. Photographed lots are not returnable on account of centering or perforations. Lots containing more than twenty stamps, described “as is”, or described as having faults are not returnable for any reason. Bidders who have had an opportunity to examine the lots prior to the sale may not return the lots.
 - (b) **AUTHENTICITY.** Any lot, which is declared other than genuine by a mutually acceptable authority is returnable, provided the lot is received within a period of four weeks from the date of the auction. Proof that a “mutually acceptable authority” declines to express an opinion is not normally grounds for the return of a lot.
 - (c) Returns must be made by registered mail.
 - (d) Lots marked or encapsulated by an expert committee are not returnable for any reason.
 - (e) Lots accompanied by an existing certificate are not returnable.

EXTENSION OF TIME

8. When an opinion from an acceptable authority is necessary, the buyer shall:
 - (f) Submit the lot without delay to either; (1) the Vincent Graves Greene Foundation or Sergio Sismondo for Canada and British North America; (2) Sergio Sismondo, British Philatelic Association or the Royal Philatelic Society of London for British Commonwealth and (3) Sergio Sismondo for Foreign;
 - (g) Ensure that advice in writing to this effect be received before the auction.
 - (h) Remit in full for the lot. The buyer shall be reimbursed in full for any lot declared other than genuine.

EXPENSES OF CERTIFICATION

9. Expenses shall be borne by the buyer except where the lot is other than as described and is returned within the conditions set forth above. Our responsibility is expressly limited to:
- (a) The actual cost of the opinion if up to \$30.00 or less, or
 - (b) The cost of the opinion up to 5% of the sale price but not exceeding a maximum of \$100.00.
 - (c) We are not responsible for expenses on the return of any lot.

SALES TAXES

10. The Harmonized Sales Tax is payable by mail bidders residing in New Brunswick, Nova Scotia and Newfoundland liable to the tax. Other Canadian residents are liable for the GST. Foreign residents are liable for GST only on the buyer's premium.
11. This firm is a subscriber to the ASDA Code of Ethics for Auction firms.

KEY TO CATALOGUING

SYMBOLS & MAJOR ABBREVIATIONS

| | | | | | |
|-----|--------------|-----|---------------------|---|------------|
| ★ | Mint | ⊙ | Used | E | Essay |
| ☒ | Cover | (/) | Incomplete Set | F | Forgery |
| (-) | Complete Set | R | Reprint | P | Proof |
| ◆ | Graded Stamp | CDS | Circular Date Stamp | L | Literature |

CONDITION

The various grading of stamps are in order; **Extremely Fine; Very Fine; Fine and Very Good.** In the case of sets, large blocks, sheets, etc., the condition quoted represents the average and quality above and below this standard can be expected.

Mixed condition: in large lots, a range of condition can be expected, from small faults to Very Fine.

GUM

| | |
|-----------------|--|
| NH | Never Hinged – with original gum in Post Office state and unmounted. |
| LH | Lightly Hinged – with full original gum showing some evidence of a previous hinge. |
| OG | Original gum – showing some evidence of a previous hinge, a portion of which may still be present. |
| Part OG | Part original gum. |
| Unused | Unused without original gum (unless gum is mentioned), or regummed. |
| Ungummed | Without gum as issued. |

ESTIMATED VALUES

If an estimated cash value is given, it is shown in the description and always indicated by the abbreviation “Est.”. It is used where the lot is large or where the actual value has little relation to the catalogue price. **It represents the auctioneer's appraisal of the true CASH value of a lot and the figure is invariably close to the actual realization.** It is useless for mail bidders to list any bids that are only a low proportion of such estimates.

CATALOGUES AND HANDBOOKS USED IN LISTING

- Unitrade Specialized (2010 Edition)
- Stanley Gibbons Commonwealth & British Empire Stamps 1840-1970 (2010 Edition)
- Winthrop S. Boggs, The Postage Stamps and Postal History of Canada, Quarterman Publications, 1974
- Robson Lowe, The Encyclopaedia of British Empire Postage Stamps Volume V North America part I to IV, 1973
- Frank W. Campbell, Canada Post Offices 1755/1895, Quarterman Publication, 1972
- Minuse and Pratt, The Essays and Proofs of British North America, 1970
- Dalwick and Harmer, Newfoundland Air Mails 1919-1939, American Air Mail Society, 1st Edition, 1953
- Walsh Newfoundland Specialized Stamp Catalogue 6th Edition, 2006
- E.A. Smythies, Canadian Registered Letter Stamps & Cancellations 1875-1902
- G.H. Davis, Canada Special Delivery, Unitrade Press, 1991
- Lehr, James, Postage Stamps and Cancellations of Prince Edward Island 1814-1873, Unitrade Press, 1987

BIDDING INCREMENTS

The auctioneer may regulate the bidding at his discretion. However, to assist absentee bidders in establishing their maximum bid for each lot, the increments shown below will be used in most cases. We recommend that written bids conform to these increments (those which do not will be reduced to the previous level).

BIDDING IS CONDUCTED IN THE FOLLOWING INCREMENTS:

| | | |
|-----------------------------------|--|---|
| <i>\$10 - \$50..... \$2.00</i> | <i>\$325 - \$750..... \$25.00</i> | <i>\$3,250 - \$7,500..... \$250.00</i> |
| <i>\$55 - \$130..... \$5.00</i> | <i>\$800 - \$1,500..... \$50.00</i> | <i>\$8,000 - \$20,000..... \$500.00</i> |
| <i>\$140 - \$300..... \$10.00</i> | <i>\$1,600 - \$3,000..... \$100.00</i> | <i>\$21,000 - OVER..... \$1,000.00</i> |

TELEPHONE BIDS

Bids may be placed during office hours Monday to Friday from 8:00 AM to 5:00 PM Atlantic Standard Time by dialing 1 (506) 548-8986 or toll free in North America 1 (800) 667-8267. Bids may also be placed during the viewing sessions only, by calling the hotel directly at 1 (902) 423-6331 and asking for (Victoria Suite). *Please note all telephone bids must be confirmed by mail, e-mail or fax.*

FAXING OR E-MAILING YOUR BIDS

You can fax or e-mail your bids before 11:00 AM A.S.T. on the closing day of the auction.
Fax: 1 (506) 546-6627, or toll free in North America 1 (888) 867-8267.
E-mail address: *easternauctions@nb.aibn.com* or *pam.ross@easternauctions.com*

BIDDING BY MAIL

If you wish to mail your bid sheet please allow at least two weeks for delivery. We often receive mail bids after the auction closing. These bids are unfortunately nullified. Bidders are urged to phone in their bids and then mail in their confirmation.

WEB SITE

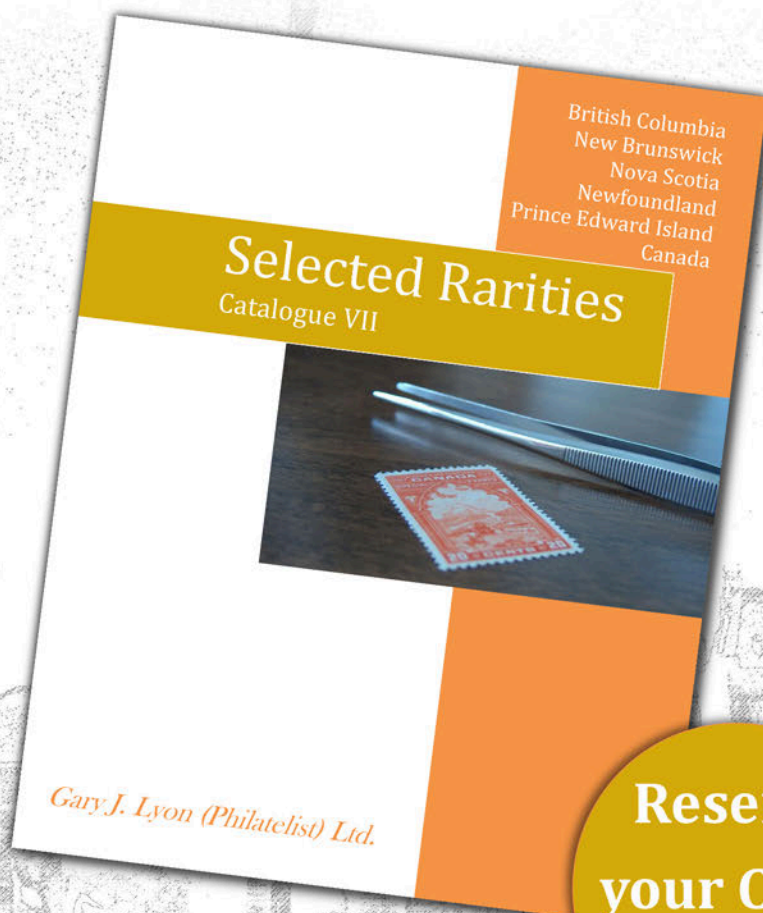
You can view this auction on our Web Site at *www.easternauctions.com*. For your convenience, we have pictured almost every lot to facilitate your bidding. This will nicely compliment the catalogue due to constraints presented by a printed format.

AUCTION AGENTS

We are pleased to recommend the following agents:

- Mr. Gerald Tucker** 23 Alderney Dr. • Dartmouth • Nova Scotia • B2Y 2N2 • Canada
Tel: 1 (902) 461-0500 • Fax: 1 (902) 461-0744
E-mail: seaside@seasidebs.com
- Mr. Harold B. Gordon** 614-6505 CSL Road • Montréal • Québec • H4V 1G3 • Canada
Phone or Fax: 1 (514) 488-0445
E-mail: hbgordon@videotron.ca
- Purser Associates** 84 Webcower Road #2 • Arlington • MA • 02474-2323 • USA
Tel: 1 (857) 928-5140 • Fax: 1 (781) 777-1023
E-mail: info@pursers.com Web Site: www.pursers.com
Visa, MasterCard & American Express welcomed.
- Mr. Charles Cwiakala** 1527 S. Fairview Avenue • Park Ridge • IL • 60068 • USA
Phone or Fax: 1 (847) 823-8747
E-mail: cecwiakala@aol.com
- Mr. Frank Mandel** P.O. Box 157 • New York • NY • 10014-0157 • USA
Tel: 1 (212) 675-0819 - Fax: 1 (212) 366-6462
- Jean & Tony Lancaster** 20 Milner Road • Kingston • Surrey • KT1 2AU • UK
Tel: (44) 020 8547 1220 • Fax: (44) 020 8547 3739
E-mail: jlaa@blueyonder.co.uk
Web Site: www.philafinder.com
- Mary Weeks** 8 Old House Close • Ewell • Epsom • Surrey • KT17 1LE • UK
Tel: (44) 020 8393 8217 • Fax: (44) 020 8393 1332
E-mail: mary@maryweeks.demon.co.uk

Coming Winter 2010!



**Reserve
your Copy
Today**

Gary J. Lyon (Philatelist) Ltd.

P.O. Box 450 - Bathurst - New Brunswick - E2A 3Z4 - Canada

Phone 1(506) 546-6363 - Fax 1(506) 546-6627

Email glstamps@nb.aibn.com - Website www.garylyon.com

Toll Free in North America

Phone 1(800) 667-8267 - Fax 1(888) 867-8267



Gary J. Lyon
Licensed & Bonded Auctioneer