

**Public
Auction**

Eastern Auctions Ltd.



British North America

Gary J. Lyon
Licensed & Bonded Auctioneer

February
14th, 2009



"Deluxe"

By John Wiseman

Original Watercolour 24" X 15.24"

Limited Edition Gicleé prints using archival quality inks and paper are available.

La Maisonart John Wiseman Gallery & Studio

826 Highway 132, Anse à Beaufile

Percé, Québec, G0C 2L0, Canada

Tel/Fax: 1(418) 782-2047

Email: maisonart@globetrotter.net - website: www.johnwiseman.net



Eastern Auctions Ltd.

P.O. Box 250, Bathurst, New Brunswick, E2A 3Z2, Canada

Tel: 1 (506) 548-8986 • Fax: 1 (506) 546-6627

Toll Free Tel: 1 (800) 667-8267 • Fax: 1 (888) 867-8267

E-Mail: easternauctions@nb.aibn.com

Web Site: www.easternauctions.com

PUBLIC AUCTION BID SHEET

Sale Date: February 14th, 2009

Please buy the following lots for me at prices not exceeding those shown. I have read the conditions of sale at the beginning of the catalogue and understand the 15% buyer's premium.

Signature: _____

Customer #: _____

Name: _____

Address: _____ City: _____

Province/State: _____ Postal/Zip Code: _____

Country: _____

Telephone: _____ Fax: _____

E-Mail: _____

Credit Card Payment

☐ Please charge my purchases to my credit card.



Card #: _____ Exp Date: _____

Cardholder's Name (as it appears on card): _____

Billing Address if different from address printed above:

Signature: _____

References (First time bidders only): _____

☐ Please tick this box if you are bidding in US Dollars:

If necessary to secure a lot, you may raise my bids by:

10% ☐ 20% ☐

☐ YES! I wish to subscribe to a full year of Catalogues and Prices Realized Reports for both Mail & Public Auctions.

Please find my ☐cheque ☐credit card number enclosed for my one-year subscription fee of CDN \$35.00 for Canadian residents, USD \$35.00 for United States residents and USD \$50.00 for overseas residents.

Bidding is conducted in the following increments:
(Uneven bids will be rounded downwards)

<i>\$10 - \$50.....</i>	<i>\$2.00</i>	<i>\$325 - \$750.....</i>	<i>\$25.00</i>	<i>\$3,250 - \$7,500.....</i>	<i>\$250.00</i>
<i>\$55 - \$130.....</i>	<i>\$5.00</i>	<i>\$800 - \$1,500.....</i>	<i>\$50.00</i>	<i>\$8,000 - \$20,000.....</i>	<i>\$500.00</i>
<i>\$140 - \$300.....</i>	<i>\$10.00</i>	<i>\$1,600 - \$3,000.....</i>	<i>\$100.00</i>	<i>\$21,000 - OVER.....</i>	<i>\$1,000.00</i>

We are not responsible for bidder errors.

Please check bids and print clearly. All bids in even dollars please.

[illegible]

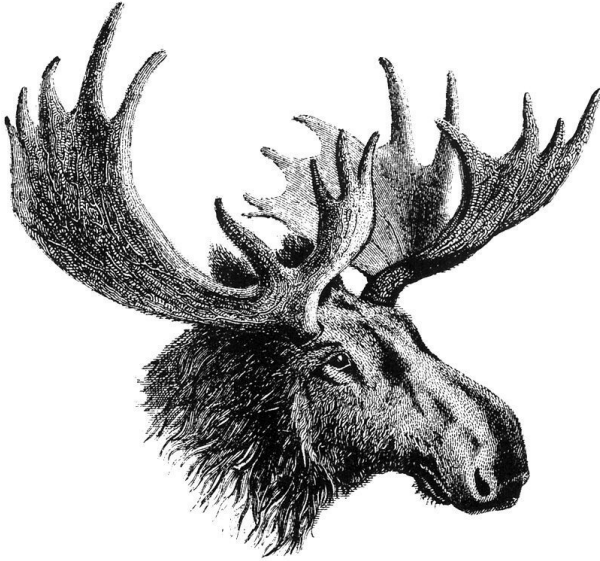
Bid early to avoid disappointment

View this sale on our Web Site: www.easternauctions.com

Please bid early to avoid disappointment. You may mail, fax, e-mail or phone in your bids. Phone bids must be confirmed in writing. Mailing your bids less than two weeks prior to the sale is not recommended.

Eastern Auctions Ltd.

PUBLIC AUCTION



February 14th, 2009
Halifax, Nova Scotia

Eastern Auctions Ltd.

P.O. Box 250, Bathurst, New Brunswick, E2A 3Z2, Canada

Tel: 1 (506) 548-8986 • Fax: 1 (506) 546-6627

E-mail: easternauctions@nb.aibn.com

Web Site: www.easternauctions.com

Copyright © 2009 – All Rights Reserved

AUCTION INFORMATION

For assistance and further information
please contact:

SPECIALISTS IN STAMPS:

Gary Lyon
Yohann Tanguay

WEB SITE:

Luc Doucet

**CONSIGNOR SETTLEMENTS/
ACCOUNTS RECEIVABLE:**

Pamela Ross

**MAILING LISTS AND
SUBSCRIPTIONS:**

Billie-Jo Beaton

CATALOGUE EDITORS:

Luc Doucet
Yohann Tanguay
Sharon Willett

SHIPPING:

Catherine Gallagher

VENUE

The Lord Nelson Hotel & Suites

Victoria Suite (Third Floor)

1515 South Park Street

Halifax, Nova Scotia

B3J 2L2 Canada

Tel: 1 (902) 423-6331 • Fax: 1 (902) 423-7148

Toll Free Tel: 1 (800) 565-2020

For Room Reservations Only

Viewing Sessions

Thursday February 12th, 2009 – 9:00am to 7:00pm

Friday February 13th, 2009 – 9:00am to 12:00pm

Saturday February 14th, 2009 – 9:00am to 12:00pm

Auction Session

Saturday February 14th, 2009 – 1:30pm

THE PLACING OF A BID SHALL CONSTITUTE ACCEPTANCE OF THE CONDITIONS OF SALE

BIDDING

1. All bids are per lot, as numbered in the catalogue. Eastern Auctions Ltd. reserves the right to withdraw any lot prior to sale, to divide a lot or to group two or more.
2. The highest bidder shall prevail at one advance over the next highest bid. Should a dispute arise between bidders, the decision of the auctioneer as to the successful bidder or the re-offering or resale of the lot in dispute shall rest entirely in the judgment of the auctioneer. **On all lots sold a commission of 15% on the hammer price will be payable by the buyer.** The auctioneer shall regulate the bidding and reserves the right to refuse any bid believed by him not to be made in good faith.

PAYMENT FOR PURCHASES

3. **U.S. funds are acceptable only at the equivalent amount shown on the invoice.** Visa and MasterCard are accepted at no extra charge if you include the information on your bid sheet.
4. Payment for lots, including those on which opinions are desired under Condition of Sale 8, shall be made as follows:

A successful mail bidder will be notified of lots purchased and must remit before the lots are sent. A person known to us, or who furnishes satisfactory references, may at our option have purchases forwarded for immediate payment. Delivery will be to the address on the bid sheet. Proof by receipt of sending at the advised address shall constitute delivery. Postage and insurance are payable by the buyer.
5. Title shall not pass to the buyer until Eastern Auctions Ltd has received full payment.
6. Buyers agree to pay for lots as specified above and no credit is extended, a late payment charge of 2% per month is added to overdue payments, minimum \$5.00.

QUALITY AND AUTHENTICITY

7. Each lot is sold as genuine and correctly described based on individual description as modified by any specific notations in this catalogue including (but not restricted to) "Key to Cataloguing".
 - (a) **QUALITY.** Any lot, description of which is incorrect, is returnable within forty-five days from closing date of auction. If the opinion of a mutually acceptable authority is desired, this period will be extended as noted in Condition 8. All disputed lots must be returned intact in the condition received. Photographed lots are not returnable on account of centering or perforations. Lots containing more than twenty stamps, described "as is", or described as having faults are not returnable for any reason. Bidders who have had an opportunity to examine the lots prior to the sale may not return the lots.
 - (b) **AUTHENTICITY.** Any lot, which is declared other than genuine by a mutually acceptable authority is returnable, provided the lot is received within a period of four weeks from the date of the auction. Proof that a "mutually acceptable authority" declines to express an opinion is not normally grounds for the return of a lot.
 - (c) Returns must be made by registered mail.
 - (d) Lots marked or encapsulated by an expert committee are not returnable for any reason.
 - (e) Lots accompanied by an existing certificate are not returnable.

EXTENSION OF TIME

8. When an opinion from an acceptable authority is necessary, the buyer shall:
 - (f) Submit the lot without delay to either; (1) the Vincent Graves Greene Foundation or Sergio Sismondo for Canada and British North America; (2) Sergio Sismondo, British Philatelic Association or the Royal Philatelic Society of London for British Commonwealth and (3) Sergio Sismondo for Foreign;
 - (g) Ensure that advice in writing to this effect be received before the auction.
 - (h) Remit in full for the lot. The buyer shall be reimbursed in full for any lot declared other than genuine.

EXPENSES OF CERTIFICATION

9. Expenses shall be borne by the buyer except where the lot is other than as described and is returned within the conditions set forth above. Our responsibility is expressly limited to:
- (a) The actual cost of the opinion if up to \$30.00 or less, or
 - (b) The cost of the opinion up to 5% of the sale price but not exceeding a maximum of \$100.00.
 - (c) We are not responsible for expenses on the return of any lot.

SALES TAXES

10. The Harmonized Sales Tax is payable by mail bidders residing in New Brunswick, Nova Scotia and Newfoundland liable to the tax. Other Canadian residents are liable for the GST. Foreign residents are liable for GST only on the buyer’s premium.
11. This firm is a subscriber to the ASDA Code of Ethics for Auction firms.

KEY TO CATALOGUING

SYMBOLS & MAJOR ABBREVIATIONS

★	Mint	⊙	Used	E	Essay
☒	Cover	(/)	Incomplete Set	F	Forgery
(-)	Complete Set	R	Reprint	P	Proof
◆	Graded Stamp	CDS	Circular Date Stamp		

CONDITION

The various grading of stamps are in order; **Extremely Fine; Very Fine; Fine and Very Good.** In the case of sets, large blocks, sheets, etc., the condition quoted represents the average and quality above and below this standard can be expected.

Mixed condition: in large lots, a range of condition can be expected, from small faults to Very Fine.

GUM

NH	Never Hinged – with original gum in Post Office state and unmounted.
LH	Lightly Hinged – with full original gum showing some evidence of a previous hinge.
OG	Original gum – showing some evidence of a previous hinge, a portion of which may still be present.
Part OG	Part original gum.
Unused	Unused without original gum (unless gum is mentioned), or regummed.
Ungummed	Without gum as issued.

ESTIMATED VALUES

If an estimated cash value is given, it is shown in the description and always indicated by the abbreviation “Est.”. It is used where the lot is large or where the actual value has little relation to the catalogue price. **It represents the auctioneer’s appraisal of the true CASH value of a lot and the figure is invariably close to the actual realization.** It is useless for mail bidders to list any bids that are only a low proportion of such estimates.

CATALOGUES AND HANDBOOKS USED IN LISTING

- Unitrade Specialized (2009 Edition)
- Scott 2009 Standard Postage Stamp Catalogue Volume 1 – 6
- Winthrop S. Boggs, The Postage Stamps and Postal History of Canada, Quarterman Publications, 1974
- Robson Lowe, The Encyclopaedia of British Empire Postage Stamps Volume V North America part I to IV, 1973
- Frank W. Campbell, Canada Post Offices 1755/1895, Quarterman Publication, 1972
- Minuse and Pratt, The Essays and Proofs of British North America, 1970
- Dalwick and Harmer, Newfoundland Air Mails 1919-1939, American Air Mail Society, 1st Edition, 1953
- The Standard Canada Precancel Catalogue, 5th Edition, 2004
- Walsh Newfoundland Specialized Stamp Catalogue 6th Edition, 2006
- C.A. Longworth-Dames, The Semi-Official Air Stamps of Canada 1924-1934, 1982 edition.

BIDDING INCREMENTS

The auctioneer may regulate the bidding at his discretion. However, to assist absentee bidders in establishing their maximum bid for each lot, the increments shown below will be used in most cases. We recommend that written bids conform to these increments (those which do not will be reduced to the previous level).

BIDDING IS CONDUCTED IN THE FOLLOWING INCREMENTS:

<i>\$10 - \$50.....</i>	<i>\$2.00</i>	<i>\$325 - \$750.....</i>	<i>\$25.00</i>	<i>\$3,250 - \$7,500.....</i>	<i>\$250.00</i>
<i>\$55 - \$130.....</i>	<i>\$5.00</i>	<i>\$800 - \$1,500.....</i>	<i>\$50.00</i>	<i>\$8,000 - \$20,000.....</i>	<i>\$500.00</i>
<i>\$140 - \$300.....</i>	<i>\$10.00</i>	<i>\$1,600 - \$3,000.....</i>	<i>\$100.00</i>	<i>\$21,000 - OVER.....</i>	<i>\$1,000.00</i>

TELEPHONE BIDS

Bids may be placed during office hours Monday to Friday from 8:00 AM to 5:00 PM Atlantic Standard Time by dialing 1 (506) 548-8986 or toll free in North America 1 (800) 667-8267. Bids may also be placed during the viewing sessions only, by calling the hotel directly at 1 (902) 423-6331 and asking for (Victoria Suite).

Please note all telephone bids must be confirmed by mail, e-mail or fax.

FAXING OR E-MAILING YOUR BIDS

You can fax or e-mail your bids before 11:00 AM A.S.T. on the closing day of the auction.

Fax: 1 (506) 546-6627, or toll free in North America 1 (888) 867-8267.

E-mail address: easternauctions@nb.aibn.com

BIDDING BY MAIL

If you wish to mail your bid sheet please allow at least two weeks for delivery. We often receive mail bids after the auction closing. These bids are unfortunately nullified. Bidders are urged to phone in their bids and then mail in their confirmation.

WEB SITE

You can view this auction on our Web Site at www.easternauctions.com. For your convenience, we have pictured almost every lot to facilitate your bidding. This will nicely compliment the catalogue due to constraints presented by a printed format.

AUCTION AGENTS

We are pleased to recommend the following agents:

- Mr. Gerald Tucker** 23 Alderney Dr. • Dartmouth • Nova Scotia • B2Y 2N2 • Canada
Tel: 1 (902) 423-8254 • Fax: 1 (902) 461-0744
Toll Free Tel: 1 (800) 377-8267
E-mail: seaside@seasidebs.com
- Mr. Harold B. Gordon** 614-6505 CSL Road • Montréal • Québec • H4V 1G3 • Canada
Phone or Fax: 1 (514) 488-0445
E-mail: hbgordon@videotron.ca
- Purser Associates** 84 Webcower Road #2 • Arlington • MA • 02474-2323 • USA
Tel: 1 (857) 928-5140 • Fax: 1 (781) 777-1023
E-mail: info@pursers.com Web Site: www.pursers.com
Visa, MasterCard & American Express welcomed.
- Mr. Charles Cwiakala** 1527 S. Fairview Avenue • Park Ridge • IL • 60068 • USA
Phone or Fax: 1 (847) 823-8747
E-mail: cecwiakala@aol.com
- Mr. Frank Mandel** P.O. Box 157 • New York • NY • 10014-0157 • USA
Tel: 1 (212) 675-0819 - Fax: 1 (212) 366-6462
- Jean & Tony Lancaster** 20 Milner Road • Kingston • Surrey • KT1 2AU • UK
Tel: (44) 020 8547 1220 • Fax: (44) 020 8547 3739
E-mail: jlaa@blueyonder.co.uk
Web Site: www.philafinder.com
- Mary Weeks** 8 Old House Close • Ewell • Epsom • Surrey • KT17 1LE • UK
Tel: (44) 020 8393 8217 • Fax: (44) 020 8393 1332
E-mail: mary@maryweeks.demon.co.uk



Provinces

*Featuring
Rare postal history of
New Brunswick and
Nova Scotia and choice
Pence issues.*

Lots 1 - 55



PROVINCES

- 1 ★◎ **Clean Mint and Used "Cents" Collection** Many dozen displayed in clear mounts on nicely designed album pages, with New Brunswick and Nova Scotia represented. Starts with New Brunswick "Cents" mint set (most with OG), a used set, a 2c with unusual fancy star cancel, proofs with #6Piv, 7P, 8P, 10P, couple pages with range of shades on issued stamps; Nova Scotia "Cents" mint set (no 5c), various plate imprint multiples with 1c (4), 2c, 8½c (3), 10c, etc. Also noted a clever 12½c forgery and Pence issue 3p blue bisect used on a cover fragment. Condition is clean throughout, Fine to Very Fine
(Not Illustrated) **Est. 400.00+**



- 2 ★◎ **Old-Time Collection** Many dozen different mint / used in a stockbook with all Provinces represented, starting with Newfoundland #11A (VF unused), mint #92, 94, 115-126, 212-225, etc., used #21, C6-C8, C3b on 1922 cover, etc. New Brunswick #1 used with just clear margins, 5Pv (proof; thin spot), 10Pi, mint #10 block (bottom pair NH), various Cents issues mint / unused / used. Nova Scotia #2 unused (faults but with four margins), a few faulty Pence issues. PEI #2 unused (small faults), #5 NH full sheet of 60, #7 nice mint block, #9 NH full sheet of 30, plus various mint / used. British Columbia with #4 unused (faults), #5 (unused), #11 (OG), used #11 with New Westminster CDS in blue, etc. Condition throughout varies from mixed to Very Fine. Worth a look. **Est. 2,000.00+**

BRITISH COLUMBIA



- 3 ★ **#15, 1869 10c on 3p Lilac Rose Coat of Arms, Watermark Crown CC, Perf 12½** A remarkably well centered mint example, perforations barely touching at top, well clear on other sides, bright fresh colour and impression, large part original gum. A notoriously difficult stamp to find, VF LH, 1983 Brandon cert. ex. *Sir Gawaine Baillie* **3,000.00**



- 4 ★ **#17, 1869 50c on 3p Violet Coat of Arms, Watermark Crown CC, Perf 12½** A remarkable mint example, unusually well centered for this challenging stamp, perforations clear of design on all four sides, full sheet margin at right with portion of Crown Colony watermarked letters, gorgeous fresh colour and clear impression, possessing full white and streaky original gum, characteristic of this issue, lightly hinged. Rarely seen in such superior quality and easily ranks among the nicest examples we have seen, VF LH, ex. *Sir Gawaine Baillie* **3,000.00+**

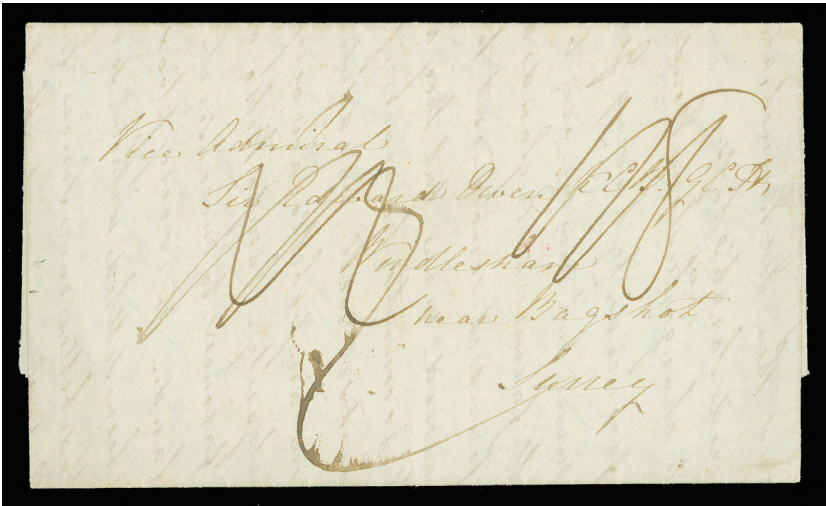


- 5 ☉ #18, 1869 \$1 on 3p Green Coat of Arms, Watermark Crown CC, Perf 12½ A scarce used example, with normal centering for this notoriously difficult stamp, nice bright colour and showing portion of oval cancellation in blue, Fine, 2003 Greene Foundation cert. **1,200.00**



- 6 ★ #18, 1869 \$1 on 3p Green Coat of Arms, Watermark Crown CC, Perf 12½ Mint example of this challenging stamp, with bright fresh colour, irregular perfs at foot, otherwise reasonably centered with bright fresh colour and possessing full original gum, lightly hinged, signed Herbert Bloch on reverse. A key stamp, Fine LH **4,500.00**

NEW BRUNSWICK STAMPSLESS COVERS



- 7 ☒ 1838 Folded lettersheet with "Welsh Pool Campobello / 4th July 1838" dateline, addressed to Vice Admiral Edward Owen, Surrey, original manuscript rate crossed out and rated "1/8", receiver "AU 7" and LIVERPOOL / SHIP LETTER handstamp in black on reverse. A very interesting cover addressed to the son of Admiral William Owen, original settler of Campobello island, a rare early cover originating from this small island, VF **Est. 500.00+**



- 8 ☒ 1845 Folded lettersheet mailed from Grand Falls to Madawaska, rated "9", endorsed "Money Letter" and showing a clear double ring despatch cancellation in red with filled-in "Oct 23 1845" manuscript date, couple light file folds. A very scarce postmarked Money Letter in choice condition and ideal for exhibition, VF **Est. 400.00**

NEW BRUNSWICK



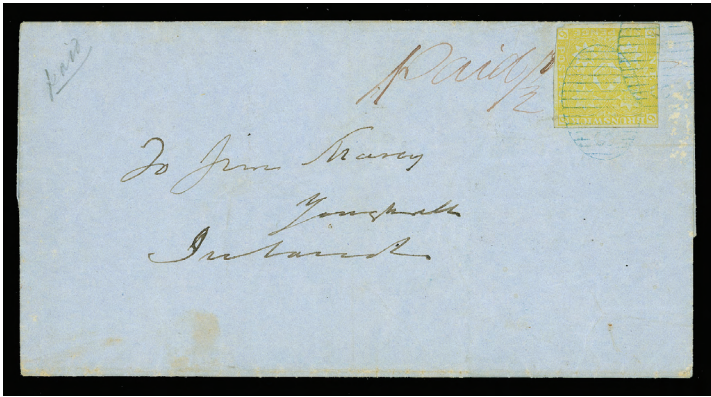
- 9 ☒ #1, 1858 (November 6) Very clean and fresh envelope mailed from St. John to Fredericton, franked with single 3p red, just clear at foot to extra large margins, tied by light oval grid '1' cancellation in black, light despatch and receiver (NO 7) backstamps. A choice cover, VF **Est. 500.00**



- 10 ☒ #1a, 1851 3p Dark Red on Blue Paper An exceptional used example of this challenging shade, true rich colour and razor sharp impression, four large to oversized margins, light unobtrusive oval grid cancellation in black. A superb stamp in all respects, rarely offered in such top-quality, XF GEM, 1994 Greene Foundation cert. **800.00+**



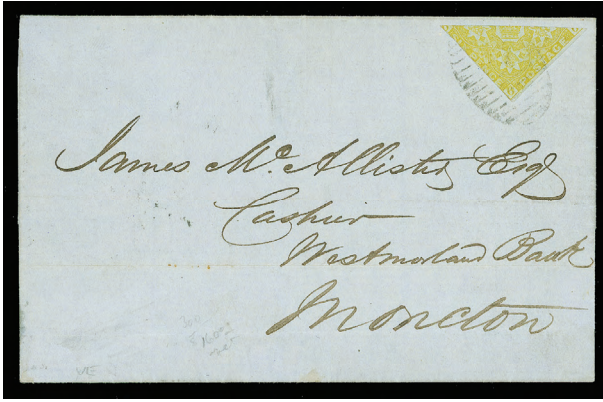
- 11 ☉ #2, 1851 6p Olive Yellow on Blue Paper A most attractive used example of this notoriously difficult stamp, unusually bright colour on fresh wove paper, adequate to large margins all around and showing a centrally struck oval grid "8" cancellation in blue from Chatham. A premium stamp for the advanced collector, VF, 2008 Greene Foundation cert. **1,500.00**



- 12 ☒ #2, 1855 (March 28) Folded cover mailed from Way Office Douglastown to Ireland, franked with 6p yellow single, just clear to large margins, tied by light oval grid '8' cancels in blue of Chatham, manuscript "paid 1½" alongside, clear W. O. Douglastown despatch, Chatham (MA 28) in blue and light Bend of Petticodiac transit backstamps. A similar cover is illustrated in The Pence Covers of Nova Scotia and New Brunswick book (page 167), identified as "This is the only recorded example of a prepaid cover to the United Kingdom with the rate made up by a combination of stamps plus cash". A wonderful and exceedingly rare cover showing this combination of rate payment, Fine **Est. 1,000.00+**



- 13 ☒ #2, 1854 (January 23) Folded entire lettersheet mailed from Newcastle to New York, franked with a single 6p olive yellow with four large margins and in a deeper shade, tied by oval numeral cancellation '21' from Newcastle, light despatch and St. John (JA 25) transit backstamps, transborder broken circle "NEW BRUNSWICK" cancel in blue and "PAID / 10 / CENTS" rate handstamp in red, couple light folds well away from stamp. Choice and previously unreported in the cover census, VF, 2004 BPA cert. **Est. 1,500.00**



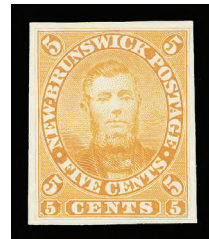
- 14 ✉ **#2a, 1860 (May 23)** Folded cover mailed from St. John to Moncton (Bend of Petitcodiac) franked with diagonally bisected 6p yellow used as a 3p, touching design on one side, other side with large margin, lightly tied by oval mute grid cancellation in black, St. John despatch and receiver backstamps, a scarce late usage of the Pence issue on cover, Cents issues were released on May 15, F-VF, 1967 BPA cert., ex. *Vincent Graves Greene* **Est. 1,500.00+**



- 15 ⊙ **#3, 1851 1sh Reddish Mauve on Blue Paper** A handsome used example of this notoriously difficult stamp, clear margin on one side, full to large margins on other three sides, bright fresh colour and with light oval grid cancellation in black. A challenging and key stamp, F-VF, 2008 BPA cert. **6,000.00**



16



17

- 16 P **#5, 1879 5c Charles Connell "Goodall"** Die essay engraved in brownish red on india paper, 26 x 32mm and sunk on card, 38 x 56mm, showing die "72" number below. A desirable and rare proof, ideal for the advanced collector, XF, ex. *Sir Gawaine Baillie* **Est. 2,500.00**
- 17 P **#5TC, 5c Charles Connell** Trial colour proof in orange on card mounted india paper, VF **400.00**



18



19

- 18 E #6, 1c Locomotive "Goodall" die essay printed in dark yellow brown on india paper, 29 x 25mm, sunk on card, 56 x 30mm; locomotive is facing left instead of right as issued. A beautiful and rare proof, ideal for exhibition, VF **Est. 2,500.00**
- 19 P #6, 1c Locomotive Trial colour die proof in black on india paper, 45 x 43mm, with die "130" number above design. A rare and most appealing proof for the advanced collector, VF **Est. 2,000.00**



- 20 ★ #6b, 1860 1c Red Lilac White Paper Horizontal pair imperforate vertically with above average centering, without gum as are all known, F-VF **750.00**



21

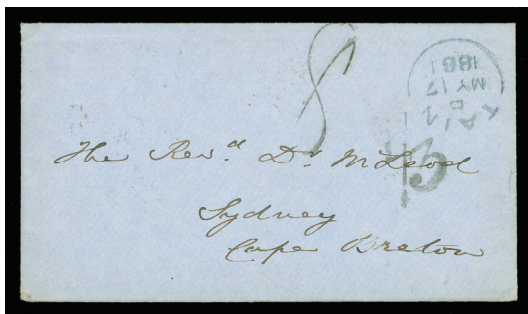


22

- 21 P #7, 1860 2c Queen Victoria Trial colour die proof, engraved in black on card mounted india paper, measuring 35 x 39mm, rare and ideal for exhibition, VF, ex. Sir Gawaine Baillie **Est. 1,250.00**
- 22 P #11, 1879 17c Prince of Wales "Goodall" Die proof engraved in bluish green on india paper, measuring 26 x 31mm, sunk on card, 40 x 56mm, bright fresh and in pristine condition. A rare proof, ideal for the connoisseur, XF **Est. 2,000.00**



- 26 ☒ 1860 (September 6) Folded entire lettersheet mailed from Halifax to Cognac, France, showing unframed tombstone "HALIFAX PAID SEP 6 1860 NOVA SCOTIA" cancel in red, two manuscript rates of "1/4" and "1/8", with London (SP 17) transit in red, French circular "PD" handstamp in red, Calais and Bordeaux transit in black, and Cognac (SP 18) receiver backstamps, slight cover discoloration spots, but highly appealing and a very scarce rated cover during the interim period between Pence and Cents issued stamps, F-VF Note: the 1860 "Cents" stamps were issued on October 1, 1860. **Est. 500.00+**



X27



X28

- 27 ☒ **Incoming Stampless Covers from the Scottish Highlands** Three similar blue envelopes, one with letter, all originating from Tain and addressed to Sydney, Cape Breton; 1861 (April 5) with manuscript "8" and handstamp "1/3" rates; 1861 (May 17) same rates as previous; 1862 (April 16) with manuscript "8" and "CTS 25" handstamp rate. All with oval Halifax transits and Sydney receiver backstamps. A scarce trio, F-VF **Est. 200.00+**
- 28 ☒ **Stampless Cover Lot** Group of eight covers, which includes: "McNab Cove Aug 9th 1847" dateline folded lettersheet to Tracadie (probably Nova Scotia) rated "4½" + "2" = "6½", with Plaster Cove, C.B. transit backstamp; clean Crown Land On Service 1864 cover from Halifax to Sydney, Cape Breton; 1850 OHMS folded cover from Guysborough to Halifax, rated "9"; neat 1859 small cover from Halifax to Sydney with "3" rate handstamp; 1859 Parkhill (Scotland) to Sydney, Cape Breton, with clear circular "1s/1½d Cy" handstamp and manuscript "1/" rates; another similar 1851 cover from Invergordon (Scotland) to Sydney, via Liverpool and Halifax with five different backstamps, etc. An unusual and interesting lot, Fine or better **Est. 350.00+**
- 29 ☒ **Halifax to Sydney, Cape Breton** Lot of ten covers ranging from 1850 to 1871; one cover dated 1850, rated "4½" and endorsed "per Steamer", several covers are "MPP" ministry signed; and one 1848 cover from Halifax to New York rated circular "6" in red. Mainly Fine and an unusual group (Not Illustrated) **Est. 350.00+**



NOVA SCOTIA



- 30 P #1/6, Pence Issue Proofs and Reprints** Five different items which includes: trial colour plate proof on thin card of the 1p (single), 6p (pair) and 1sh (single; cut into at right); and 1890 1p and 1sh reprints, posthumously gummed. A scarce group, F-VF **Est. 500.00+**



X31



X32

- 31 ☒ #2-3, Lot of nine folded covers, seven bearing single 3p (shades), includes** 1853 (JY 19) Windsor to Wolfville; 1854 (JA 13) Halifax to Kentville; 1854 (SP 20) Annapolis to Halifax; 1856 (MY 21) Annapolis to Cornwallis; 1857 (SP 1) Canning to Kentville; 1857 (Nov.) Lower Horton to Kentville; 1858 (JY 1) Wolfville to Kentville; also two covers bearing pair 3p pale blue, with 1852 (JU 4) Halifax to Bridgetown; 1853 (OC 4) Amherst to USA. Lastly single 3p bright blue with clear margins on piece dated 1855. Stamps either cut into or with small cover flaws, otherwise a Fine and scarce grouping **Est. 500.00+**
- 32 ☒ #2, Lot of three covers bearing 3p (shades), includes:** single on 1858 (FE 13) Windsor to Halifax; pair on 1858 (OC 13) small mourning cover from Guysborough to USA, via Truro and New Brunswick; single on 1856 (DE 29) lady's envelope from Bridgetown to Way Office Indiantown, New Brunswick with light receiver backstamp. All three covers with small flaws, but still an unusual and scarce trio, Fine **Est. 250.00**



33



34

- 33 ★ #2, 1857 3p Blue on Bluish Paper** A handsome unused example showing adequate to large margins, gorgeous fresh colour and sharp impression on fresh paper. A tough stamp to find, VF **1,600.00**
- 34 ☉ #2, 1857 3p Blue on Bluish Paper** A striking used example, with deep rich colour and small to large margins, minute tear at top hardly visible, used with very light grid cancellation and showing an unusual large portion of New York (APR 4) circular datestamp in bright red, VF **300.00+**



- 35 ☒ #2a, 2, 1855 (December 5) Large part folded cover mailed from Amherst to Liverpool, England, franked with two large margined singles and a diagonal bisect of the 3p deep blue, tied by oval mute grid cancel, clear Amherst despatch double arc datestamp and "H" (Halifax) transit (DE 7) backstamp, with tombstone "PKT LETTER / PAID / LIVERPOOL / 17 DE / 54" receiver, file fold going through middle stamp as do all known covers from the Ratchford correspondence, F-VF, ex. *Maurice Burrus, Brouse* **Est. 3,500.00+**

THE EARLIEST KNOWN USAGE OF THE SEVEN AND ONE HALF PENCE RATE TO ENGLAND VIA HALIFAX AS WELL AS THE EARLIEST USAGE OF THE BISECTED THREE PENCE ON COVER. A RARE AND IMPORTANT COVER, IDEAL FOR EXHIBITION.



- 36 ☒ #2a, 4, 1860 (May 1) A beautiful mourning cover sent from Pictou to England, franked with a single 6p yellow green and a diagonally bisected 3p bright blue, former just touching design one place, otherwise large margins, tied by oval mute grid cancellation in black, neat despatch datestamp, Halifax oval (MY 2) transit and Newcastle on Tyne receiver (MY 16) on reverse. A pretty cover paying the Seven and One Half pence rate to England, VF, 1966 BPA cert. **Est. 4,000.00**



- 37 ★ **#4, 1851 6p Yellow Green on Blue Paper** Unused example with just clear at lower right to extra large margins, tiny sealed tear at foot in "N" of "PENCE", F-VF, a rare stamp **4,750.00**



38



40

- 38 ◎ **#5, 1857 6p Dark Green on Blue Paper** An attractive used example of this notoriously difficult stamp, clear at left to large margins, unusually deep rich colour and crisp impression, neat oval mute grid cancellation in black. A nice stamp, F-VF **1,750.00**



- 39 ☒ **#5a, 1859 (April 20)** Folded cover mailed from Wilmot to St. John, New Brunswick, franked with a diagonally bisected 6p dark green, half used as a 3p, paying the single-letter rate, touching design on one side, other with large margin, tied by mute grid cancellation in black, clear Wilmot despatch and Annapolis transit backstamps, with St. John receiver (AP 2-) on the back, F-VF, 1956 RPS cert. **Est. 5,000.00**

A VERY RARE BISECT COVER. ONLY TWO OTHER SIX-PENCE DARK GREEN BISECT COVERS ARE KNOWN PAYING THE SINGLE-LETTER RATE TO NEW BRUNSWICK.

- 40 ◎ **#6, 1857 1sh Reddish Violet on Blue paper** Used example with large margins, skillfully rebacked over small flaws, lightly cancelled and with VF appearance **7,000.00**

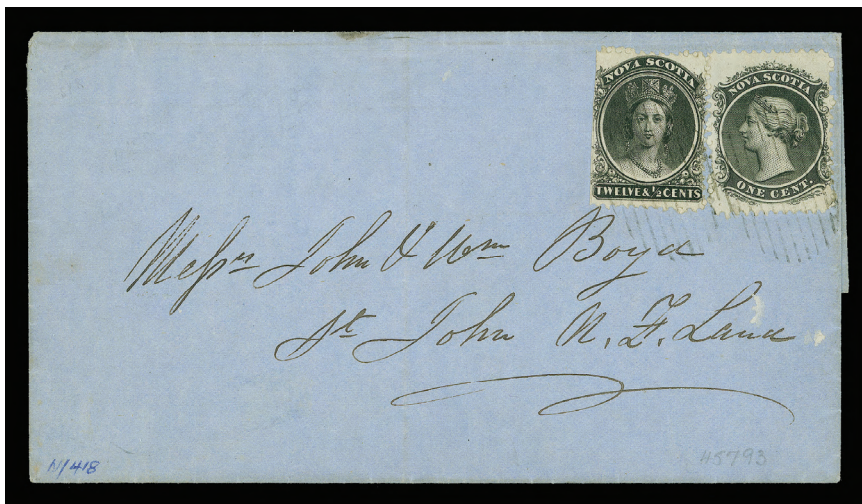


- 41 ☉ **#7, 1851 1sh Dull "Cold" Violet on Blue Paper** An outstanding used example, with true rich and distinctive colour of the scarcer First Printing, showing four unusually balanced and large margins, very faint bend mentioned only for strict accuracy and barely visible in fluid, centrally struck oval mute cancellation in black. A wonderful stamp, rarely encountered in such superior quality, XF

8,000.00

- 42 ★ **#8/12, 1860 1c/10c Queen Victoria Issue** Two large mint multiples mounted on large album pages from the Nicholas Argenti collection with his notes on plate varieties; 1c black on yellowish paper, bottom half portion of sheet and 8½c green on yellowish paper, upper right sheet corner block of 49 (stain on eight stamps). Also 8½c green on white paper, never hinged full sheet of 100, crease on two stamps; and 10c vermillion on white paper full sheet of 100, lightly hinged on four stamps, rest never hinged. A scarce group, F-VF

(Not Illustrated) **Est. 500.00+**



- 43 ☒ **#8, 13, 1863 (July 9)** Folded cover mailed from Port Medway to St. John's, Newfoundland, showing a very rare franking consisting of a single 1c black and 12½c black (clipped at left) tied by clear unframed barred cancellations in black, light but clear despatch split ring and Halifax oval transit backstamps and St. John's (JY 27) receiver backstamp, VF, 1958 RPS cert. *ex. Argenti* **Est. 3,000.00**

AN EXCEEDINGLY RARE COVER, PAYING THE 13½ CENT RATE FROM THE INTERIOR OF NOVA SCOTIA TO NEWFOUNDLAND. ONLY TWO OR THREE COVERS ARE KNOWN TO EXIST SHOWING THIS POSTAL ROUTE AND RATE. A HIGHLY DESIRABLE COVER FOR THE CONNOISSEUR.



- 44 ☒ #9b, 1866 (January 17) Blue envelope mailed from Halifax to Bridgewater, franked with two singles and a diagonal bisect of the 2c lilac, tied by neat oval mute grid cancels, light despatch and receiver (JA 19) backstamps, small portion of backflap at right is missing, some trivial soiling mostly on reverse, a very rare franking paying the 5c domestic letter rate, F-VF **Est. 2,500.00+**
- 45 ★ #9var., 1860-1863 2c Lilac Two major misperf mint singles (to the left and to the right), also misperf horizontal pair resulting in full imprint showing at top. F-VF NH *(Not Illustrated)* **Est. 100.00**




- 46 ☒ #10, 1866 (January 11) Clean envelope mailed from Sydney, Cape Breton to Ottawa, franked with a well centered single 5c blue tied by light grid cancel, showing seven different backstamps; Sydney, North Sydney, St. John, N.B., Woodstock, N.B., Quebec and Ottawa (JA 25). A lovely cover, VF **Est. 100.00+**
- 47 ★ #10c, 1860 5c Dark Blue on White Wove Paper Block of four, regummed with small repaired spot at top, still a rare and attractive multiple, Fine **1,000.00**
- 48 ☉ #10c, 1860 5c Dark Blue Two used examples, one on bluish tinge wove paper, other on white paper on small piece, both cancelled by "5c" within oval mute grid cancellation from Baddeck, Cape Breton. A rare duo, F-VF *(Illustrated on Page 21)* **Est. 250.00+**



-48-




49

- 49  **USA Incoming Mail 1853** (September 27 dateline) Folded entire lettersheet mailed from New York franked with USA 3c dull red, Type II (Scott 11A), clear to extra large margins and tied by neat circular grid cancellation in black, envelope endorsed "per Steamer Niagara from Boston" at top and "Not for England" at lower left corner, neat "5" handstamp rate marking in black, sent to Halifax, with clear "U STATES / HALIFAX SP 30 1855" backstamp, centre file fold, F-VF and scarce

Est. 300.00+



- 50  **Cents Issue Mint and Plate Proof Issues** A nice and clean selection of 1c, 2c, 8½c, 10c and 12½c mint blocks of four or larger, plus some papers and shades noted, a few used with 12½c with Steamship "A97" cancel. Most of value is concentrated in the plate proofs, many seldom seen. Noted #8TCv, 8TCx, 8TCxi strip of three, 9P, 9TC, 9TCi, 9TCiii, 10Pi, 10TCi pair, 11P block, 11TCi block, 11TCii, 11TCv, 12TC, 12TCi, 12TCii pair, 12TCiii, 12TCvi pair (thins but rare), 12TCxiii block (thin on one stamp only), 13Pi, 13TC, 13TCiii, 13TCvii, etc. Quality is nice throughout, mainly F-VF or better

Est. 1,000.00+



- 51 ★P **Cents Issue Collection** Displayed on black stockpages with emphasis on plate proofs where we noted #8tux imprint block of four, 9TCiii (with incomplete "S" looking like a comma; unusual), 10Pi, 10TCiii, 11TCiv, 11TCv, 12TC, 13TCvi; 1c to 12½c plate proof set in orange; mint selection in singles with 5c (two shades; one unused other with original gum, minor perf toning), mint #8c; a group of 15 mint blocks of four, about half with imprint and many stamps are NH. A solid group, a few flaws to be expected, but mostly Fine to Very Fine **Est. 750.00+**
- 52 ☒ **Lot of Cents Issue Covers (12)**, noted 2c on OMHS November 1867 cover, single 5c on cover from Sydney, C.B. to Halifax, single 12½c (clipped) on 1861 lady cover to England, 1c + 2c pair on cover front (*ex. Brouse*), single 5c usage on 1864 cover from Baddeck cancelled by "5c" within grid cancel (very rare on cover) to Halifax, small adhesive label on front and some light toning, etc. Condition is mixed as usual, otherwise a usual group for the specialist. (*Not Illustrated*) **Est. 500.00+**
- 53 ☒ **Lot of Nova Scotia Hotel Covers and Picture Postcards** Includes 43 cards and covers, mostly with Hotel adverts and picture postcards from the South Shore scenes, etc., mostly from KEVII and KGV era. Condition is mixed throughout, but noted some pristine coins and view cards, etc. Inspect. (*Not Illustrated*) **Est. 150.00**



X54



X55

- 54 ◎ **Pence Issues** Selection of 21 stamps; 1p (3 examples; two are sound with close to full margins), 3p with shades (12 including two pairs, most with faults), 6p yellow green (3; one is sound), 6p dark green (2) and 1sh purple. Mixed condition throughout. **Est. 750.00+**
- 55 ☒ **PRINCE EDWARD ISLAND #5, 6**, Lot of three covers: 1865 (February 2) Small envelope, reduced at right, franked with 2p rose tied by grid "13" from Charlottetown to Summerside, VF; 1865 (August 8) Small blue envelope franked with 3p blue cancelled by light grid, addressed to Pictou, N.S., despatch and light receiver backstamps, VF; Undated envelope franked with pair of 3p blue cancelled by light grids, addressed to Boston, portion of top backflap missing and some cover soiling along left edge otherwise Fine. **Est. 200.00+**



Newfoundland


*Featuring
1857 One shilling scarlet-
vermilion bisect on cover;
rare "Cents" issue plate
multiples; a 1919 Hawker
flight cover; a stunning
Halifax airmail block with
inverted overprint and
revenues.*

Lots 56 - 112




NEWFOUNDLAND PENCE



- 56  **#5, 1857 5p Brown Violet** A choice used example with full to large margins, deep rich colour and impression, light grid cancellation. A tough stamp to find, VF **500.00**

ONE SHILLING SCARLET VERMILION BISECTED COVER



- 57  **#9a, 1860 (November 16)** Large part Bill of Lading cover mailed from Harbour Britain to London, England, showing an horizontally bisected One shilling scarlet vermilion, half used as a Six pence, with large margins on all three sides and tied by clear and neat oval barred cancellation, neat despatch double split ring cancel in black at upper left, St. John's (NO 29) transit postmark and London (DE 24) receiver, both in red, signed Calves, VF and one of the nicest of the handful of known examples **25,000.00**

Expertization: 2004 Greene Foundation cert, 1999 Behr cert.

Provenance: Goody, Hart, Gilbert

ONLY FOURTEEN ONE SHILLING BISECTED COVERS ARE RECORDED, MANY ARE ON COVER FRAGMENTS SUCH AS THE EXAMPLE OFFERED HERE. A REMARKABLE PENCE ISSUE SHOWPIECE.

CENTS



58



61

- 58 P #25, 5c Harp Seal Trade sample proof engraved in rose red on horizontal wove paper, large margins, pretty, VF **Est. 200.00**



59



60

- 59 P #25Piii, 5c Brown Harp Seal Plate proof corner block of sixteen (Pos. 1-4 / 31-34) on card mounted india paper, with plate imprints at top and at left, shows the Major Re-entry (Pos. 14). An attractive plate proof multiple, VF **Est. 1,000.00+**
- 60 P #28TC, 12c Orange Yellow Queen Victoria Trial colour plate proof block of sixteen (Position 67-70 / 97-100), showing "Chin Strap" plate variety (Position 68), with plate imprint at right and at foot, on card mounted india paper. Attractive positional multiple, VF **Est. 1000.00+**
- 61 ★ #31, 1865 24c Blue on Thin, Crisp Translucent Paper An impressive mint example, very well centered within uncharacteristically large margins and wing margin at top, fresh and with full original gum. An eye-appealing stamp, rarely found in such top-quality, VF NH JUMBO **Est. 250.00+**



- 62 ★ #32A, 1871 1c Brown Lilac Prince of Wales (Re-engraved), Perf 12 An impressive mint example of this very difficult stamp, quite well centered for the issue, lovely fresh colour and impression on fresh wove paper, possessing full white original gum, characteristic of the 1871 re-engraving, that has been never hinged. Easily ranks among the toughest of all Newfoundland stamps to find in superior condition - exceptionally rare, VF NH GEM, 2008 Sismondo cert. **Est. 1,000.00+**



63



64

- 63 ★ **#35, 1870 6c Bright Rose Queen Victoria** An attractive top sheet margin strip of three, showing full plate imprint, lovely fresh colour, nicely centered and with full original gum, hinged in selvage only, leaving stamps never hinged. A scarce plate multiple, VF **Est. 250.00+**
- 64 ★ **#36, 1894 6c Carmine Lake Queen Victoria** Unusually fresh right-hand plate imprint block of six, remarkably well centered for the issue and possessing full immaculate original gum, never hinged. Rarely seen in such top-quality and an ideal plate multiple for the meticulous collector, XF NH **Est. 1,000.00+**



65



66

- 65 ★ **#39, 1877 3c Blue Queen Victoria, Rouletted** Exceptionally well centered mint example with deep rich colour and possessing full original gum, lightly hinged, very seldom seen in such superior quality, XF LH **550.00**
- 66 ★ **#40, 1877 5c Blue Harp Seal, Rouletted** A spectacular mint block of six, showing full plate imprint below bottom centre stamp, very well centered and with lovely fresh colour, sharp impression on fresh wove paper, with full original gum, hinge reinforcement on bottom left pair, leaving four stamps never hinged. A very scarce plate multiple to obtain, especially in such superior quality, VF **Est. 3,500.00**



- 67 ★ #41, 1880 1c Violet Brown Prince of Wales A choice left sheet margin mint block of four, showing full imprint, quite well centered for the issue and with large part streaky white original gum, characteristic of the issue, very scarce thus as most plate multiples known are without or regummed. A nice plate multiple, VF OG **Est. 500.00+**



68



70



71

- 68 ★ #45, 1896 1c Green Prince of Wales A selected mint example, unusually well centered within large margins, gorgeous fresh colour, possessing full pristine original gum. A tough stamp to find in superior quality, XF NH **Est. 100.00+**



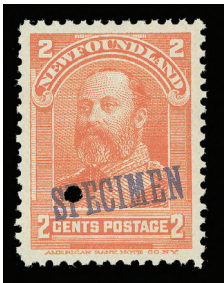
- 69 ★ #48a, 1887 2c Red Orange Codfish An impressive top sheet margin imperforate strip of four, showing full imprint at top and large margins on other sides, light crease on left stamp, not visible from front, unused without gum. A very rare plate imprint multiple, VF **Est. 1,500.00**
- 70 ★ #49, 1896 3c Blue Queen Victoria A remarkable mint example of this difficult stamp, unusually well centered for the issue with large margins, lovely fresh colour and full pristine original gum, rarely seen so nice, XF NH **270.00+**
- 71 ★ #57, 1896 1/2c Orange Red Newfoundland Dog Nicely centered mint example with wide margins, fresh and with full original gum. A tough stamp to find, VF NH **300.00**
- 72 ★ #58, 1894 1/2c Black Newfoundland Dog Left sheet margin mint block of nine stamps, showing a perforation shift (2-3mm down and slanting), striking with full original gum, never hinged. Unusual. *(Not Illustrated)* **Est. 250.00**



CABOT AND ROYAL FAMILY



- 73 P **#61-74, 1897 1c-60c Discovery of Newfoundland** An attractive and complete set of fourteen plate proofs in pairs, each on card mounted india paper, fresh and choice, VF **Est. 1,250.00**



- 74 ★ **#82, 1898 2c Vermilion King Edward VII** Complete set of all nine printing orders, each with different SPECIMEN overprint, applied by the American Bank Note Company, F-VF NH **Est. 500.00**



- 75 ★ **#82a, 1898 2c Vermilion King Edward VII** Fresh imperforate mint pair with narrow margins as often is the case with this imperforate issue, full pristine original gum, F-VF NH **585.00**
- 76 ★ **#85, 1899 5c Blue Duke of York** Nicely centered bottom plate imprint block of eight, security punch and diagonal SPECIMEN overprints in red, fresh and with full original gum, small hinge reinforcing bottom margin, stamps never hinged, VF **Est. 500.00**



77



79

- 77 ★ #86, 1908 2c Rose Carmine Map of Newfoundland Unusually well centered mint block of four, with full original gum. Seldom seen multiple, VF NH **640.00**



- 78 ★ #86, 1908 2c Rose Carmine Map of Newfoundland Complete set of three printing orders, each with different SPECIMEN overprint, applied by the American Bank Note Company, F-VF NH **Est. 300.00**

- 79 ★ #124, 1919 15c Dark Blue Caribou Remarkably well centered mint block of four, deep rich colour and with full original gum. Would be very hard to find a finer block, XF NH **420.00+**



- 80 ◎ #128, 1920 3c on 15c Scarlet, Type I Surcharge (Bars 10½mm apart) Key used example with light Sandy Point 1921 split ring cancellation, VF **300.00**

Fax in your Bid(s) toll free in North America
Dial 1(888) 867-8267



PUBLICITY



81

- 81 P #147, 3c Brown King George V & Queen Mary (First Engraving) Die proof engraved in colour of issue on thick card, unwatermarked, measuring 74 x 45mm, showing die sinkage at sides, scarce, VF
Est. 500.00+



82

- 82 ★ #163i, 1929-1931 1c Green Map of Newfoundland (Re-engraved), No Watermark Mint horizontal pair, imperforate vertically between stamp and sheet margin at right, full original gum, seldom seen, F-VF NH
310.00



- 83 ★ #164var., 1929-1931 2c Deep Carmine Steamship (Re-engraved), No Watermark Top sheet margin strip of three, imperforate at top between stamps and sheet margin and imperforate vertically, some paper adhesion on back and light vertical crease, a very unusual multiple, unlisted in Unitrade catalogue and the first such perforation variety we have seen, VF
Est. 750.00



84

- 84 P #165, 3c Red Brown King George V & Queen Mary (Re-engraved) Die proof printed in issued colour on unwatermarked wove paper, measuring 54 x 50mm, showing horizontal guideline at left, scarce, VF
Est. 500.00

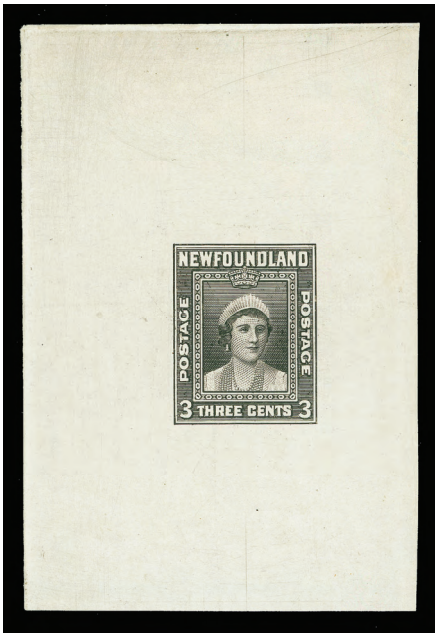


85

- 85 P #175, 1931 4c Rose Prince of Wales (Re-engraved) Plate proof block of four in colour of issue on thick unwatermarked wove paper, scarce, VF
Est. 250.00

1941-1944 RESOURCES (WATERLOW PRINTING)

- 86 ★ #253i/257vii, 1941-1944 1c, 2c, 3c & 5c Resources Four different upper right imperforate sheet corner blocks of four, with security punches, original gum, disturbed or with usual wrinkling, otherwise VF, ex. *Waterlow Archives* (Unitrade \$1,200) (Not Illustrated) Est. 500.00



- 87 P #255, 1941-1944 3c Queen Elizabeth (Waterlow Printing) Large trial colour die proof engraved in black on white glazed-surface wove paper, measuring 57 x 87mm, showing die sinkage on two sides, rarely seen, VF Est. 1,250.00



- 88 ★ #257vii, 1941-1944 5c Violet, Die I (Waterlow Printing) Lower imperforate gutter plate 43966 block of eight, printer's security punch, usual creases and folds, stamps are never hinged. A UNIQUE positional block, ideal for exhibition, VF, ex. *Waterlow Archives* Est. 2,500.00
- 89 ★ #269v, 1947 4c Princess Elizabeth Matching set of three imperforate mint blocks of four, one from each printing order, each with lower portion of sheet margin at foot, some corrections to be made by the printer indicated, usual gum wrinkles for the issue, VF NH, ex. *Waterlow Archives* (Unitrade \$1,350) (Not Illustrated) Est. 500.00



AIR POST



- 90 ☒ **#C1, 1919 (April 12) Hawker Trans-Atlantic Flight** Envelope mailed from St. John's to London, franked with a single 3c red brown Caribou with commemorative flight overprint in black, reasonably centered and with bright colour, stamp slightly moved from its original position when it floated off into the sea and then replaced by postal authorities. Also bearing the British Post Office "FOUND OPEN AND OFFICIALLY SECURED" label affixed on the back and cancelled "London 30 MY 19" - one of the very few known Hawker covers to have this label, Very Fine, 1980 Friedl cert, signed H. Bloch **35,000.00**

A WORLD-CLASS AIRMAIL RARITY WITH LESS THAN 80 COVERS FLOWN ON THIS FAMOUS TRANS-ATLANTIC FLIGHT.

- 91 ★ **#C2, C2a, C2b, C2ii, 1919 (June 9) \$1 on 15c Alcock and Brown Flight** A scarce positional mint block of four, showing four different overprint types (Position 14-/20), lower right stamp with small comma after "POST" is NH, F-VF LH *(Illustrated on Page 34)* **1,850.00**

HALIFAX AIRMAIL BLOCK WITH INVERTED OVERPRINT



92★

#C3a, C3c, C3e, C3k, 1921 (November 21) 35c Red Halifax Airmail Issue A spectacular positional mint block of four with INVERTED OVERPRINT ERROR showing four different types of overprint (Position 4-5 / 9-10), this block originates from the fourth and final inverted overprint sheet as described in Dalwick & Harmer handbook: “(4) Overprint low but with horizontal perforations above "1921" and the "t" of "to not cut through.” This remarkable block has lovely fresh colour with crisp impression on fresh paper, possessing full original gum, VF OG

78,000.00

Diagram of the upright overprint setting				
I	III	I	II	V
VI	III	VI	I	III
I	III	I	I	IV
I	VI	III	VI	III
I	III	I	I	IV

- I
- Wide spacing, no period after “1921”
- II
- Same as I, with “l” of “1921” below “f” of “Halifax”
- III
- Wide spacing, with period after “1921”
- IV
- Narrow spacing, no period after “1921”
- V
- Same as IV, with “l” of “1921” below “f” of “Halifax”
- VI
- Narrow spacing, with period after “1921”

Overprint Position 4 (II) (inverted on lower right stamp; Scott C3e) - Wide spacing, no period after "1921", with "l" of "1921" below "f" of "Halifax" (one per sheet; 4 known)

Overprint Position 5 (V) (inverted on lower left stamp; Scott C3k) - Narrow spacing, no period after "1921", with "l" of "1921" below "f" of Halifax (one per sheet; 4 known)

Overprint Position 9 (I) (inverted on upper right stamp; Scott C3a) - Wide spacing, no period after "1921"; not shown due to shift of overprint (nine positions per sheet; 40 known)

Overprint Position 10 (III) (inverted on upper left stamp; Scott C3c) - Wide spacing, with period after "1921"; not shown due to shift of overprint (seven positions per sheet; 28 known)

Provenance: Cyril Harmer (2002)

Expertization: 2002 BPA cert.

Literature: Dalwick & Harmer, Newfoundland Air Mails 1919-1939, First Edition 1953, page 64.

A WORLD CLASS AIRMAIL RARITY, ONLY FOUR SHEETS OF TWENTY-FIVE STAMPS RECEIVED THE INVERTED OVERPRINTS AND THUS ONLY FOUR POSITIONAL BLOCKS SUCH AS THE ONE OFFERED HERE CAN EXIST. A WONDERFUL ITEM FOR THE CONNOISSEUR.



91



93

- 93 ★ #C3f, 1921 (November 7) 35c Halifax Airmail Narrow spacing - 1½mm between "AIR" and "MAIL", no period after "1921", choice mint example, very fresh and with full original gum, VF NH
900.00



94



95

- 94 P #C6-C8, 1931 15c, 50c & \$1 Pictorial Airmail Issue Nice set of three trial colour plate proof singles, printed in black on unwatermarked bond paper, VF
Est. 750.00
- 95 ★ #C12, 1932 (May 19) \$1.50 on \$1.00 Blue Dornier DO-X Flight Nicely centered and fresh mint example with full original gum, VF NH
800.00



96



97

- 96 ★ #C13a, 1933 5c Light Brown "Labrador" Imperforate Upper right sheet corner mint block of four, large margins and fresh with full original gum, VF NH
1,060.00
- 97 ★ #C14a, 1933 10c Yellow Orange "Labrador", Imperforate Upper right sheet corner mint block of four, lovely fresh colour and with large margins and full original gum, VF NH
800.00



- 98 ✉ #C18, 1933 (July 26) Balbo Flight airmail cover with appropriate cachet at lower right, franked with a well centered \$4.50 on 75c bistre (Position 1 of the setting) tied by neat St. John's CDS postmark, clear Shoal Harbour (JUL 27 33) departure split ring cancel, two different Italian arrival (12.8 and 15.8) backstamps, forwarded back to Newfoundland with Torino despatch (15.8) and St. John's receiver (AUG 28) backstamps. A clean example of this popular flight cover, VF **Est. 1,000.00**



- 99 ★ #OX1, 1905 Officially Sealed King Edward VII Plate proof pair in issued colour on card mounted india paper, with large margins and choice, XF **2,000.00**



- 100 ★◎ **Mainly Mint Collection** On stockpages and album pages in a Lighthouse binder, from Pence era to late 1940s, plus airmails. Many dozen different mainly mint stamps. Noted unused (no gum) #1, 17 (XF), 24a, 33, 34, several 1865-1896 Cents issues; mint original gum #21, 32, 32A, 35 (block), 37, 55 (block), 59, 112, 115-126 set, 131-144 two sets, 145-159 set, 186c (NH), 212-225, various 1929-1947 issues, C13a ungummed pair, etc. Some flaws to be expected on earlier issues, but generally selected and fresh throughout, Fine to Very Fine. A useful lot with high catalogue value. **Est. 1,250.00+**
- 101 ★◎ **Clean Mint / Used Stock** Many dozens, individually on cards, carefully identified and graded, starting from Pence issues to late 1940s, includes airmails and dues. Section divided mint hinged or never hinged and used. A very useful lot for a show dealer. Fine to Very Fine *(Not Illustrated)* **Est. 200.00**



- 102 ★◎ Valuable Collection** Mainly mint throughout with several hundred stamps displayed on black stockpages in a Lighthouse binder, starts with #13 (two used with thins but Fine appearance), mint #8 (part OG), mint #17-23, 26 (nice unused), mint #28, 30, wide range of 1868-1897 Cents issues (mint and used), mint #61-74 (most NH including key 35c), #76, 78-86, 87-97, 98-103, 104-114, 115-126 (two sets), COMPLETE regular issued stamps from 1923 to 1947, plus #160 pane of 25, #211ii, a strong section of mint multiples and Waterlow plate blocks, a few pages with 1880-1930s used issues, etc. A strong collection, ideal for expansion, condition is nicer than normally encountered, Fine to Very Fine. Well worth a look to appreciate. **Est. 2,000.00+**
- 103 ★ Clean Mint 1865-1947 Collection** Housed on album pages, carefully placed in black mounts, with many dozen different mint stamps (Scott #24/J7), starting with a few "Cents" issues and then quite well represented from the 1897 Cabot issue to last regular issued stamp in 1947, plus 1933 "Labrador" airmail set and the postage dues. Also a few stamps from other Provinces (not counted). Quality is nice throughout and mainly F-VF or better. Scott 2009 US\$1,825. *(Not Illustrated)* **Est. 500.00**
- 104 ☒ First Flight Covers, etc.** Group of 66 covers, mostly from 1930s to 1940s, noted numerous First Flight covers, some FDCs, slogans, etc. Many are addressed to Cape Breton, Nova Scotia. Mainly Fine or better and worth a look. *(Not Illustrated)* **Est. 300.00+**
- 105 ☒ Cover Miscellany** Old-time cover album with 45 covers, mostly King George VI era FDCs; noted four 1940s Meter covers, etc. Also Tonga Tin Can covers from 1930s, Tristan Da Cunha 1937 Coronation cover with double ring "TRISTAN DA CUNHA" handstamp and showing a South Africa 1p Postage Due (unusual and scarce); 1938 Cover franked with Leeward Islands ½p & 1p KGV and tied by Boston slogan and with C.N.S. "LADY HAWKINS" POSTED ON THE HIGH SEA handstamp in blue, etc. Mainly Fine or better *(Not Illustrated)* **Est. 300.00+**



- 106 ★◎ Comprehensive and Clean 1857-1947 Collection** Mainly mint starting with some nice mint Pence issues #1, 11A, 12A, 19 (two shades), 17, 22, 23, followed by complete Cents mint or used. From 1897 Cabot issue, it is complete mint up to 1947, fresh and clean throughout, including better sets such as the 1910-191 John Guy (lithographed and engraved) sets. Airmail includes C2, C3b, C6-C11, C12, C13-C17, C18 Balbo (position 4 in the setting), complete postage dues. Overall quality is clean and fresh throughout. A solid basis for continuation or to start a new collection, Fine to Very Fine **Est. 3,000.00+**
- 107 ★◎ 1865-1933 Mint / Used Collection** Many dozen stamps on Lighthouse hingeless album pages, well represented from Cents Issue to 1933. Includes mint #30, 29 (NH), 33 (unused), 34, 53, virtually complete and mint from the 1897 Cabot issue to 1933 Gilbert set, including better 1910 and 1911 John Guy (lithographed and engraved) sets, plus airmails with mint C2, C7-C11, C12 and postage dues. A few flaws noted on some Cents issues, otherwise overall quality is nice and clean throughout, Fine to Very Fine *(Not Illustrated)* **Est. 1,500.00+**

NEWFOUNDLAND REVENUES



- 108 ★ #NFB1, 1938 10/12c Blue Beer Stamp, Perf 12x13¼ A choice and well centered example of this very scarce and sought-after revenue, without gum as issued, VF **1,600.00**



- 109 ☉ #NFR15, NFR15a, 1903 \$100 Vermilion King Edward VII, Perf 12 Well centered used example, showing neat printing offset on back, used with blue handstamp cancellation; also **\$100 Dark Carmine**, Perf 11¾, Well centered within large margins, light blue handstamp cancellation in blue. A scarce duo, VF **530.00**



- 110 ☉ #NFT2, 1927 \$2 Red Caribou Transportation Tax An exceptionally rare used example of this challenging and sought-after revenue stamp, quite well centered with good colour, slight thin, light pencil manuscript cancellation. Among the rarest Canadian Revenue stamps to find with only six used examples known to exist, catalogue value is irrelevant for such rarity, VF **2,500.00+**



111

112

- 111 E Walsh RTE1, 1922 (November) 2c Blue Black Newfoundland Dog Inland Revenue Essay plate proof single on wove paper, unwatermarked, very scarce and appealing, VF **Est. 400.00**
- 112 E Walsh RTE2, 1922 (November) 2c Red King George V Inland Revenue Essay plate proof single on wove paper, unwatermarked, pinpoint thin spot negligible for this very scarce proof, VF **Est. 300.00**

Eastern Auctions Ltd.

Would like to showcase your collection.



Canada's most trusted auction house

Since 1980 we have steadily built a reputation for outstanding realizations. Numerous record prices have been achieved for superior quality stamps. Take advantage of our friendly and professional service. Your collection will be described by our expert lotters and lavishly illustrated in our deluxe catalogue. Commission rates are very competitive and prompt payment is always guaranteed.

Contact us today for further details.



Eastern Auctions Ltd.

P.O. Box 250 - Bathurst - New Brunswick - E2A 3Z2 - Canada

Telephone: 1 (800) 667-8267 - Fax: 1 (888) 867-8267 - E-mail: easternauctions@nb.aibn.com

Canada



*Featuring
A lifetime collection of
Hamilton postmarks and
cancellations; an important
collection of Squared Circles
from the late Norman Wagner;
fancy cancels, top-quality mint
stamps; sought-after modern
errors; rare revenues and
collections.*

Lots 113 - 370



CANADA CANCELLATIONS



- 113** **◎** **CDS / ROLLERS / RPO**, A nice old-time collection as received mounted on quadrilled pages; ALL ONE CENT SMALL QUEENS with emphasis on clarity and centering of the cancellations, we note a strong selection of rollers with wide range of towns / numbers; several dated 1870-1875 early examples; an extensive showing of New Brunswick and Nova Scotia CDS and split ring cancels, identified by previous owner; a few pages with Maritimes Railway Post Office cancels. Several hundred stamps throughout, many being in pairs or in strips of three. Difficult to assemble and an excellent opportunity for the specialist, nice quality throughout, F-VF **Est. 300.00+**



- 114** **◎** **HAMILTON "ORB" CANCELS**, An impressive collection of the "ORB" three-ring large datestamp on stamp and piece. All neatly organized in chronological order on black stockpages, all with different dates or time marks from AP 13 1896 (earliest recorded date) to JA 5 1900 (the latest recorded!). Mostly with selected socked-on-nose strikes, all showing complete dates with time mark. Includes 543 Small Queens One cent to Three cent, 466 Jubilees One cent to Ten cent and some Leaf, Numeral and Map stamps. Key items abound throughout with scarcer time marks (photocopy of article on time mark analysis is included), some jumbo stamps, a SP 31, 1897 date (very rare on this type of cancel), a reversed day slug (rare) and many Sunday dates (scarce). The most extensive collection of this town cancellation we have seen; retail value if broken down into singles would be quite high; a wonderful opportunity for the dealer and collector alike. Viewing is highly recommended for proper appreciation. **Est. 2,000.00+**


- 115** **◎** **HAMILTON CDS / DUPLEX AND MACHINE DATERS**, Collection of Hamilton datestamps on stamp and piece from 1897 Jubilee to 1976, all neatly arranged in chronological order on black stockpages, a few hundreds all with different dates or time marks and all collected for clarity of the strikes. Emphasis on Jubilee era with 1c (20), 2c (5), 3c (61), 5c, 8c (2) and a beautiful \$2, plus Numerals, Leafs, Edward VII, Tercentenary with 20c (2), some back-of-book with E1 (6), etc. Many selected centered stamps, jumbos, socked-on-nose cancels, etc. A wonderful opportunity for the specialist, overall Fine to Very Fine *(Illustrated on Page 41)* **Est. 1,000.00+**



-X115-




-X116-

- 116  **HAMILTON CDS / SPLIT RINGS**, A remarkable collection of Hamilton datestamps on stamp and on piece from the Cents, Large Queen and Small Queen issues, includes early double arc datestamps, followed by split rings, split ring / duplex and CDS postmarks, all neatly arranged in chronological order on black stockpages and showing all different dates or time marks. Includes Cents issue 1c (18), 2c, 5c (8); Large Queen 1c yellow orange (8; with shades), 2c (5), 3c (8), 6c (2), 12½c (2), 15c; Small Queens with 1,341 stamps, mostly 1c and 3c from early 1870 to 1897. Noted several multiples, socked-on-nose cancels, jumbo margined and superb stamps throughout; also a few date errors, such as a nice (FE 30 94; very rare) on a 2c Small Queen. Some flaws noted, especially on the earlier stamps, but overall very clean with all stamps showing complete dates with time mark. A lifetime of dedication to assemble such an impressive collection, viewing is recommended to appreciate.

Est. 1,500.00+



- 117  **HAMILTON OVAL REGISTRATION**, Clean and extensive collection neatly arranged in chronological order on black stockpages, all different dates and time marks; the three main oval types of registration cancels are represented on F1 (45), F2 (11), 37 (38), 38 and 40. Overall quality is nice throughout, difficult to assemble, especially on stamps with a good portion originating from the Horace Harrison collection, Fine to Very Fine

Est. 250.00+

Call us toll free in North America
Dial 1(800) 667-8267
or
Fax us 1(888) 867-8267



- 118** ◎ **FANCY CANCELLATIONS, AN IMPRESSIVE COLLECTION** A total of 279 stamps, ALL ON THE ONE CENT SMALL QUEEN, in mounts and arranged by sections starting with a nice range of Fancy cancellations from Toronto and Hamilton, followed by Leaves / Floral patterns, Crowns (various types), Masonics, Straightlines, an unusual large group of "Bogey Faces" with fifteen stamps and one on cover from Napanee and collection, ending with Letters from A to T. Noted some very early printings (orange to deep orange; plus various perf 11½x12, etc.) A few small flaws to be expected, but quality has mainly been selected for clarity of the strikes and mostly sound throughout. A remarkable collection which took many years to assemble. An excellent opportunity for the cancellation specialist, Fine to Very Fine **Est. 1,000.00+**

CANADA SQUARED CIRCLE CANCELLATIONS



- 119** ◎ **Precursors & Type I**, Green Lindner hingeless album with total of 225 stamps, wide range of different issues from Large Queen to 1898 Map. Most Precursors and Type I squared circle towns are represented. Noted Precursor Halifax with "impossible" JA 8 12P/92 date, Ottawa with 10c SQ (JA 19 5P/92; new ERD), St. John with 1c SQ (AU 31 PM/92; LRD), Toronto (three examples of 10c SQ); Type I with rare Byng Inlet North (3c SQ with portion of clear postmark), Ottawa (1c SQ with Christmas date "7/DE 25/95", rare Springhill Mines (3c SQ with large portion of right-hand side of 1894 postmark), etc. Fine to Very Fine **Est. 400.00+**
- 120** ◎ **Type II Maritime**, Green Lindner hingeless album with 349 stamps from Annapolis, NS to Summerside, PEI; nice range of different issues from Large Queen to King Edward VII. Most towns are represented throughout. Noted better such as Freeport, NS on 1c, 3c & 8c SQ, Great Village, NS on 3c SQ (SP 1 / 94), very rare Maitland, NS on 3c SQ with clear and almost complete strike (NO - / 93), rare Noel, NS on 3c SQ with legible strike, Wolfville, NS on 3c SQ, Yarmouth, NS (State 1) on eleven stamps with 1c SQ (2), 2c SQ and 3c SQ (8), three with "AM" and one with blank time marks, Clifton, NB on 3c SQ, St. John, NB (Hammer I) 2c SQ (AM / NO 3 / 96; LRD) and 3c SQ (PM / NO 3 / 96; LRD), St. John, NB (Hammer II) on 3c SQ (2 / OC 22 / 97; LRD) and 10c SQ strip of four (MR 8 / 97), St. John, NB (Hammer III) 3c Jubilee (PM / OC 23 / 97), etc. Quality throughout is much nicer than normally encountered - an ideal lot for the advanced collector, Fine to Very Fine

(Illustrated on Page 43) **Est. 600.00+**



-X120-



-X121-

- 121 ☉ **Type II Ontario**, Three Lindner hingeless albums with 880 stamps from Acton (Hammer I) to Wooler, showing a wide range of different issues from Small Queens to King Edward VII. Most towns are represented. Noted Angus with 8c SQ socked-on-nose cancel, Athens with 8c SQ (JY 19/94; one day after ERD), Blue Vale with 8c SQ with clear postmark, Blyth with 3c SQ (clear postmark; couple short perfs), Cobourg with 3c SQ (NO 1 97; LRD), Comber (three different), Hamilton including eight stamps cancelled on same day with different time marks, International Bridge (two different), Kingston with 3c Numeral (DE 7/98; LRD), Lambton Mills with 1c Numeral (clear postmark; slight thin), Markdale (Hammer I; two different), Markdale (Hammer II on 3c SQ), Mill Brook (partial strike on two 3c SQ), Nassagaweya with 3c SQ (MR 13/95; faults), Oshawa with 1c SQ (SP 15/94; LRD), very rare Pontypool on 1c SQ with clear (NO 8/93; unlisted on this denomination), Port Dover on 3c & 8c SQ, Rousseau on 3c & 8c SQ, Schreiber (State 1) on 1c & 3c SQ, Bleeker St. on 1c & 2c SQ, Parliament St. on 1c, 3c & 5c SQ, Waterdown 3c SQ on piece with creases, showing (DOWN ONT. / DE 4 / 95) portion of the strike, Wiarton on 3c & 8c SQ, etc. Some with flaws as expected but majority is in selected condition or with neat strikes. A great lot for the specialist, Fine to Very Fine

Est. 1,000.00+

Fax in your Bid(s) toll free in North America
Dial 1(888) 867-8267



- 122** ☉ **Type II Quebec**, Green Lindner hingeless album with 180 stamps from Acton Vale to Windsor Mills; nice range of different issues from Small Queens to King Edward VII. Most towns are represented. Noted Hochelaga on 1c & 3c SQ, Lennoxville with 1c SQ pair (clear strike), Notre Dame on 1c & 2c SQ, Pointe a Pic on 3c SQ, clipped at upper left; showing good and clear portion of this rare strike (E A PIC / -24/ -3), Richmond on 3c SQ (2), very rare St. Gabriel de Montreal on 3c SQ; small perf flaws, with faint but legible strike (96 / JA 11 / - ; LRD), Stanstead on 1c SQ (AP 6 / 94), Sutton on 3c SQ (2), etc., plus a few errors of indicia. Quality of stamps / strikes is nicer than normally encountered. A wonderful lot for the specialist, Fine to Very Fine **Est. 500.00+**



- 123** ☉ **Type II Western, & RPOs** Green Lindner hingeless album with 260 stamps from Birtle, MB to Victoria, BC; nice range of different issues from Large Queen to King Edward VII. Most towns are represented throughout. Noted better such as Pipestone, MB on 2c & 3c SQ, Estevan on 1c, 2c & 3c SQ, plus 3c Numeral, Grenfell, Assa with nice 1c SQ strip of three on piece with neat (SP 14 95) strikes, rare Wolseley, Assa (Hammer I) on 3c SQ with large portion of strike dated (MR 9 / 95), rare Ashcroft Station, BC on 3c SQ with large portion of strike tied to piece dated (- / NO 29 / 97), Golden, BC on 3c SQ, Kaslo, BC on 10c SQ pair, rare Mission City on 3c SQ with light (OC 11) strike, Rossland on 3c SQ, Sandon, BC with nice strike on 3c SQ tied to piece, etc.; plus selection of Railway Post Offices strikes with 22 stamps, many with RF50+. Quality throughout is much nicer than normally encountered - an ideal collection for the specialist or for continuation, Fine to Very Fine **Est. 600.00+**



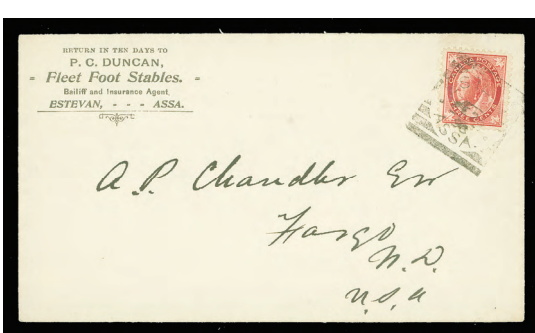
- 124** ☉ **Three Cent Jubilee** Collection of 245 stamps, all in black mounts on pre-printed Squared circle album pages in a binder, from Beaverton, Ontario Type I to Victoria, BC Type II and followed with three different RPOs. Mostly different towns, plus ranges from different Time marks for some cities (i.e. Ottawa, Winnipeg, etc.). Also includes 13 covers, selected for combination of clean cover and strike. Difficult to assemble and quality is very nice overall **Est. 600.00+**



- 125 ☉ **St. John, NB (Hammer I, II and III) Calendar** An impressive and lifetime attempt to collect as many different dates as possible, with a total of 1765 stamps. All carefully mounted and displayed on quadrilled pages in a green Scott album. Date range from (AM / AP 1 / 95; one day after earliest recorded date) to (PM / DE 28 / 98), showing no less than 106 stamps cancelled on various Sundays! Noted 1c & 3c SQ with (FE 29 / 96; Leap Year); Hammer I 3c SQ (AM / NO 3 / 96; LRD) and (PM / NO 3 / 96; LRD); Hammer II 3c SQ (PM / NO 4 / 96; ERD) and 3c SQ (2 / OC 22 / 97; LRD); Hammer III 3c SQ (PM / OC 23 / 97; ERD), etc. Virtually all stamps are carefully selected for centering and clarity of the strike, high quality standard kept throughout the collection and would be virtually impossible to replicate. A wonderful opportunity to acquire this one-in-a-lifetime collection, Very Fine
Est. 750.00+



- 126 ☉ **Extensive and Lifetime Collection** Carefully displayed on quadrilled pages and housed in three thick binders, with over 7,350 stamps from various towns in Ontario, Maritimes and Type I strikes, concentration of value and strength is on the former. Wide range of various dates, time marks, year dates, issues from Small Queens to King Edward VII (also noted some late 1940s - early 1950s issues). Clarity of the strikes throughout this collection is impressive, with many stamps tied on piece and noted numerous pairs and larger multiples. Noted Kingston (Hammer I) rare 2c KEVII (11 / DE 24 / 03; Period 2 - one day only), North Bay 3c SQ on piece (- / DE 24 / -; year absent), Petrolea 5c SQ strip of three and 1c SQ tied on piece with (- / NO 30 / 95) strike, also several indicia errors from various towns, etc. A very solid collection, ideal for continuation or to start a new and fascinating field, overall nice quality, Fine to Very Fine
Est. 2,500.00+



- 127 ☒ **Large and Comprehensive Collection** Each cover placed in individual plastic sleeves or on black stockpages, with a total of 193 covers / cards / postal stationery, some are fronts, but noted nice variety of illustrated covers. From precursors to Western Canada. Collected for one of each town (hardly any duplicated towns / type of strikes) including different Hammers and States when present. Noted numerous strikes ranging RF30 to RF60+, several originating from Vincent Graves Greene collection, etc. Noted incoming 1895 (redirected) cover from England with Peterborough transit squared circle, Estevan which is rarely found on cover, etc. Condition varies from mixed to clean Very Fine and a wonderful opportunity for the specialist. **Est. 1,000.00+**



X128



-X130-



- 128 ☉ **Jubilee Issue Calendar** Collection of 224 different dated examples starting from June 19, 1897 (First Day of Issue), COMPLETE to November 18, 1897, a few missing thereafter until January 31, 1898, plus ten different dates for February 1898 and five for March 1898. Virtually all strikes are on the 3 cent stamp. A few with flaws as to be expected, but quality is generally nice with selected strikes. A very challenging collection to assemble, Fine to Very Fine **Est. 500.00+**
- 129 ☉ **Balance of Collection** Several hundred stamps, sorted by Towns and Types in envelope with Type I, Maritime Provinces, Quebec and Ontario (focus is on the latter), plus an envelope filled with several hundred stamps (squared circles and CDS postmarks on Small Queens and Jubilees). Also binder and folder filled with newsletters, articles, census, etc. on squared circles, plus one stack of brand new large size "museum-style" album pages and some empty Lindner blank hingeless pages. Quality appears nice throughout and a very useful lot for dates or to spend hours sorting through, Fine or better *(Not Illustrated)* **Est. 300.00+**
- 130 ☉ **Hamilton Precursors and Type II** A neat collection with 265 Small Queens from the One cent to Five cent, with 25 Precursors and 240 Type II. Noted a nice range of time marks and selected strikes. A few flaws noted, but overall quality is clean and an excellent opportunity for the specialist, Fine to Very Fine **Est. 300.00+**

PROVINCE OF CANADA
PENCE



131



133

- 131 ☉ **#1a, 1851 3p Orange Red on Handmade Laid Paper** A beautiful used example, well clear at top to large margins, rich colour and impression on fresh paper, with neat centrally struck concentric rings cancellation in black, F-VF **1,200.00**
- 132 ☉ **#2/11, Used Pence Issues** Selection which includes #2 (close margins, but sound), #4 used, #4a horizontal pair (vertical crease on left stamp, F-VF), #4ii used (small corner crease; four large margins), #4 Oneglia engraved forgery "used", #7, 8, 9, 10 and 11 all five stamps with small flaws, not visible from front, Fine appearance *(Not Illustrated)* **Est. 1,500.00+**
- 133 ☉ **#2, 1851 6p Slate Violet on Handmade Laid Paper** An attractive used example showing adequate to large margins all around, with portion of adjacent stamp at lower left, nice impression and colour with centrally struck concentric rings cancellation in black, choice, VF, 2008 Greene Foundation cert. **2,500.00**
- 134 ☒ **#4a, 1853 (February 14)** Small clean envelope mailed from Montreal to Boston, franked with 3p brown red horizontal pair, into outer frameline at top to adequate margins cancelled by concentric rings, neat red despatch datestamp at lower left and showing transborder arc "CANADA" handstamp in red. Also 1855 (November 22) Folded cover mailed from Montreal to New York with double arc despatch in black at lower left, franked with 3p brown red vertical pair, slightly into at right to full margins, cancelled by concentric rings and with straightline "PAID" handstamp in red. A Fine duo *(Not Illustrated)* **Est. 250.00**



135



136



137

- 135 ☉ **#4d, 1854 3p Orange Red on Thin Hard Wove Paper** A choice and four margined used example with bright colour on fresh paper, concentric rings cancellation in black, a nice stamp, VF **300.00**
- 136 ☉ **#4dvii, 1854 3p Orange Red on Thin Hard Wove Paper** Used example showing the distinctive Major Re-entry (Position 47; Pane A), clear at upper left to large margins, rich colour, light concentric rings well clear of the plate variety, slight blueing marks on reverse, F-VF **975.00**
- 137 ☉ **#4ii, 1855-1857 3p Orange Red on White Opaque Wove Paper** A premium used example, lovely fresh colour on unusually fresh white wove paper, clear impression with full to large margins, light centrally struck concentric rings cancellation in black. A superb stamp, XF **350.00+**



138



139

- 138 ☉ **#5, 1855-1857 6p Slate Grey on Medium Wove Paper** An impressive used example with amazingly large margins, showing portion of adjacent stamp at top and at foot, rich colour and impression on fresh paper, used with concentric rings cancellation in black, XF JUMBO **2,000.00+**

- 139 ☉ **#5, 1855 6p Slate Grey on Medium Wove Paper** A handsome used example with ample to large margins, bright colour and impression on fresh wove paper, showing a clear four-ring '21' cancellation from Montreal. A nice stamp, VF **2,000.00**



140



141

- 140 P **#8Pi + var., 1/2p Rose Queen Victoria** Plate proof single on india paper, with vertical SPECIMEN overprint in green black, showing extended vertical frameline at lower left corner, large margins, VF **300.00**

- 141 ★ **#8, 1857 1/2p Rose on Medium Wove Paper** A very nice unused example with full to large margins, bright colour, minute nick at upper right corner, hardly discernible and entirely in margin, VF, 2008 Greene Foundation cert. **1,350.00**



142



143

- 142 ☉ **#12, 1859 3p Red on Wove Paper, Perf 11 1/4** An unusually well centered used example, with intact perforations and deep impression, used with a centrally struck four-ring '21' cancellation from Montreal. Nicer than normally seen, scarce thus, VF **1,600.00**

- 143 ☉ **#12, 1859 3p Red on Medium Wove Paper, Perf 11 1/4** Quite well centered used example with intact perforations, deep colour and impression, with light four-ring '45' cancellation in blue from Stanstead, L.C., F-VF **1,100.00**

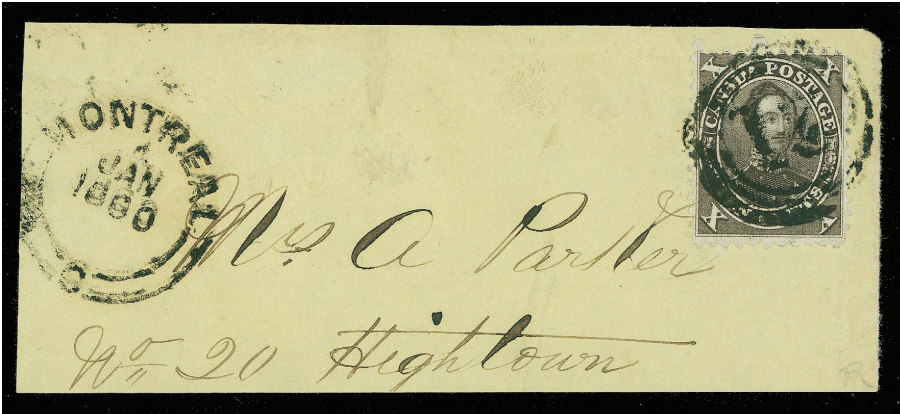
CENTS



- 144 P #14P-20TC, Cents Issue Complete set of six plate proofs in issued colours on card mounted india paper, VF and attractive 1,500.00



- 145 ☉ #14, 1859 1c Rose, Perf 12 Horizontal used pair, reasonably centered, with clear impression and showing centrally struck four-ring "2" cancellations in blue from Belleville, U.C. on both stamps, attractive, F-VF Est. 200.00+
- 146 ☉ #14, 1859 1c Rose, Perf 12 Very well centered used example, perforations clear of design on all sides, bright fresh colour and with light grid cancellation in blue, choice, VF 125.00
- 147 ☉ #14viii, 1859 1c Rose, Perf 12x11¼ Extremely well centered used example with lovely fresh colour, lightly cancelled. Seldom seen so nice, XF 125.00+



- 148 ☉ #16, 1859 10c Black Brown (PO1A; First Printing), Perf 11¼ An attractive used example, the deep (true) shade of this sought-after printing, perforations well clear of the design on three sides, tied by four-ring '21' cancellation in black on cover fragment with accompanying double arc datestamp from Montreal (4 JAN 1860) at left. An appealing usage of this key Cents issue, Fine+, 2003 PF cert. 3,500.00
- 149 ☉ #17, 1866-1868 Red Lilac, Perf 12 Exceptionally well centered used example with tall margins, lovely pastel-like colour and light dotted cancellation in black, XF (Illustrated on Page 50) 225.00



150



152

- 150 P #19TC, 1867 17c Pale Blue Cartier Trial colour plate proof block of eight from the lower left corner (Position 81/94) on card mounted india paper, VF **2,000.00**



149




151

- 151 ★ #19, 1859 17c Deep Blue, Perf 12x11½ A brilliant fresh unused example, quite well centered for this difficult stamp, crisp impression on fresh paper. A nice stamp, almost Very Fine centering **1,350.00**
- 152 P #20TC + var., 2c Dark Rose Vertical plate proof strip of four (pos. 61/91) from the lower left corner showing plate imprint and also the best example of the engraver's slip variety (extension of vertical frameline) on the top stamp, printed on card mounted india paper. A nice multiple for the specialist, VF **Est. 1,000.00+**

Call us toll free in North America
Dial 1(800) 667-8267
or
Fax us 1(888) 867-8267

DOMINION OF CANADA



- 153**  **#24, 37**, 1870 (November 1) Registered envelope mailed from Truro, N.S. to Pictou, franked with single 2c green Large Queen and 3c dull red Small Queen perf 12, tied by light two-ring numeral cancels (likely 54 Truro), straightline "REGISTERED / LETTER No." handstamp with manuscript number, light Truro despatch double arc datestamp and with Albion Mines receiver backstamp. A scarce mixed issue franking, F-VF, 1959 RPS cert. **Est. 500.00+**



154



155



156

- | | | | |
|-----|---|--|---------------------|
| 154 | ◎ | #24var., 1868 2c Green on Very Thin Horizontal Wove Paper, Perf 12 Well centered used example (Duckworth Paper 9) of this scarce paper, with Quebec (OC 10 68) CDS postmark, VF | Est. 150.00+ |
| 155 | ◎ | #28ii, 1868 12½c Blue on Thinner Wove Paper, Perf 12 Very well centered used example, no outer frameline at left value tablet, neat two-ring '3' cancellation from Quebec, pretty, VF | 300.00+ |
| 156 | ★ | #29, 1888-1890 15c Grey Violet on Vertical Wove Paper, Perf 12 Lower left sheet corner mint block of four, fresh colour, some perf separation and minor wrinkle in bottom selvage only, full original gum, F-VF LH | 740.00 |



- 157 ☉ #30biii, 1875 15c Blue Grey on Vertical Wove Paper, Perf 12 Horizontal used pair showing clearly the "Pawnbroker" plate variety (Pos. 10), lightly cancelled and Fine **335.00**

SMALL QUEEN



158



160

- 158 ★ #35, 1888-1897 1c Yellow (Ottawa Printing), Perf 12 A selected mint example, well centered within large margins, bright colour and possessing full unblemished original gum, VF NH **225.00+**



X159



161

- 159 ☒ #35, 37, 41, Neat lot of 1c and 3c (also in combination) covers, noted 1892 1c Picton, N.S. drop letter; a clean unsealed 1896 cover from Harrow, Ont. to Amherstburg; a lovely registered 1896 cover franked with pair 1c and pair 3c tied by Antigonishe, N.S. squared circles to S. South River Dennis with RPOs and receiver backstamps; an early 1870 (July 2) cover bearing well centered 3c copper red tied by Halifax duplex to Bridgetown; clean 1881 cover from Beatons Mills, PEI with despatch split ring franked with 3c tied by segmented cork to Charlottetown; 1875 cover with pair 3c from Halifax to Scotland; 1896 registered cover franked with 1c pair and 3c pair with River Dennis Station, N.S. split rings, etc. A nice lot. **Est. 300.00+**

- 160 E #36, 2c Orange Red Engraved plate essay on india paper, showing large portion of plate imprint at foot, VF **Est. 600.00**

- 161 ★ #36, 1891-1892 2c Deep Green (Ottawa Printing) A striking mint block of four, showing an interesting perforation shift (3-4mm to right and slanting), full original gum, left pair never hinged. A neat multiple for the specialist. **Est. 350.00**

- 162** ☒ **#37, F2, 1885 (August 23)** Registered envelope mailed from Middle Musquodoboit, neat despatch split ring at lower left, franked with single 3c orange red and 2c orange registration tied by oval mute grid, former slightly overlapping due to opening of envelope, clear "Missent to / Halifax - N.S." handstamp on front and back, three different backstamps. Also 1889 (December 20) Registered envelope from Wolfville to Halifax, franked with single 3c bright vermilion and 3c rose carmine (#41 & 41a), plus 2c vermilion registration (F1a) tied by oval "R" cancels, small cover tear at top centre, away from stamps, F-VF duo *(Not Illustrated)* **Est. 150.00+**



- 163** ☉ **#37d, 1870 3c Copper Red (First Ottawa Printing), Perf 12½** Quite well centered used example of this notoriously difficult perforation variety, true colour and impression and with light two-ring numeral cancellation. A tough and key stamp to find, almost Very Fine centering **1,325.00**



164



165

- 164** ★ **#38, 1876 5c Slate Green (Montreal Printing), Perf 12** An attractive mint example, reasonably centered, with lovely fresh colour and impression, possessing full unblemished original gum, never hinged. A difficult stamp to find, F-VF NH **2,100.00**
- 165** ★ **#39, 1872 6c Yellow Brown (Montreal Printing), Perf 12** Precisely centered mint example with lovely fresh colour and crisp impression, possessing full streaky original gum, characteristic of this early printing, very lightly hinged. Seldom seen so nice, XF VLH **900.00**



166



167

- 166** ★ **#41a + var., 1888 3c Pale Rose Carmine (Ottawa Printing), Perf 12x12½** A neat mint example showing an unusual and prominent pre-printing paper fold at upper left, full original gum, very seldom seen especially on this better printing, Fine NH, 2006 Greene Foundation cert. (Catalogue value is for normal stamp only) **600.00+**
- 167** ★ **#41ii, 1891 3c Orange (Ottawa Printing)** A choice imperforate pair, lovely fresh colour, large even margins and ungummed as issued, XF **600.00**



168



169

- 168 ★ #42, 1888-1897 5c Grey (Ottawa Printing), Perf 12 A beautiful mint example with unusually wide margins, and large portion of plate imprint in right sheet margin, full original gum, VF LH **300.00+**

- 169 ★ #43, 1889-1897 6c Red Brown (Ottawa Printing), Perf 12 Lovely fresh mint example, reasonably centered within wide margins, full original gum, never hinged, almost Very Fine centering **590.00**



170



171

- 170 ★ #44d, 1889-1897 8c Blue Grey (Ottawa Printing) Large margined imperforate strip of three, full browned original gum, lightly hinged on middle stamp only. A very scarce multiple, VF **1,500.00**

- 171 ★ #45ii, 1896 10c Rose Pink (Ottawa Printing) A choice imperforate pair, sheet margin at right, large margins on other sides, fresh colour and ungummed as issued, VF **750.00**



172



173

- 172 ★ #46a, 1893 20c Brown Orange Widow Weed Imperforate vertical pair, fresh and with large margins, ungummed, scarce in sound condition, VF **1,800.00**

- 173 ★ #47a, 1893 50c Deep Violet Blue Widow Weed Imperforate vertical pair with sheet margin at foot, large margins on other sides, rich colour and possessing full original gum, VF LH **1,800.00**

1897 DIAMOND JUBILEE



- 174 P #50-65, 1897 ½c-\$5.00 Diamond Jubilee Issue A choice and complete set of sixteen plate proofs, each with full to large margins, bright fresh colour and crisp impression on card mounted india paper. An appealing set of Canada's first commemorative issue, VF-XF **Est. 4,000.00**



X175



X176

- 175 ★ #50-61, 1897 ½c-\$1 Jubilee Mint set of twelve stamps, complete up to the \$1, all with fresh colours and with full original gum; 50c with light gum crease, all are never hinged. Catalogued as Fine centering only. **2,930.00**
- 176 ☉ #50-62, 64, 1897 ½c-\$2, \$4 Jubilee Partial used set of fourteen; 8c and 20c with small thin spot, \$2 with Union Station roller cancel and deep rich colour, \$4 with light pressed crease but with neat Toronto (MR 30 99) split ring, F-VF **3,600.00**



177



178

- 177 ★ #51, 1897 1c Orange A striking mint example, well centered within enormous wide margins, with deep colour and full original gum, VF NH JUMBO **Est. 100.00+**
- 178 ☒ #52, 55, 1898 (February 19) Registered envelope mailed from Ottawa to Montreal, franked with single 2c green and 6c yellow brown Jubilee tied by Ottawa roller cancellation with neat despatch boxed registration datestamp at lower left, with Montreal receiver (FE 19) backstamp. A scarce commercial usage of the 6c on cover, F-VF **Est. 300.00**



- 179 ★ **#54, 1897 5c Deep Blue** Exceptionally well centered mint example with lovely fresh and rich colour, full original gum. A premium stamp, XF NH, 2007 Greene Foundation cert. **270.00+**



- 180 ★ **#54, 1897 5c Deep Blue** Post office fresh mint block of four, nicely centered, rich colour and possessing full unblemished original gum, VF NH **1,080.00**



181



182

- 181 ★ **#56, 1897 8c Dark Violet** Exceptionally well centered mint example with deep rich colour and full original gum. A choice stamp, XF NH **540.00+**

- 182 ★ **#56, 1897 8c Dark Violet** Exceptionally well centered within balanced margins, unusually deep rich colour and with full unblemished original gum. A superb stamp, XF NH **540.00+**



- 183 ★ **#57, 1897 10c Dark Violet** Exceptionally well centered mint example with gorgeous fresh colour and impression, possessing full original gum. A choice stamp, XF NH **540.00+**



184



185

- 184 ★ #58, 1897 15c Steel Blue Reasonably centered mint example, bright fresh colour and with full pristine original gum, never hinged, almost VF centering **750.00**
- 185 ★ #58, 1897 15c Steel Blue Well centered mint example with brilliant fresh colour and crisp impression, one blind perf at top, with full pristine original gum. A tough stamp to find, VF NH **1,200.00**



186



187

- 186 ☒ #59iii, 1897 (June 26) A fresh and clean cover addressed locally bearing a nicely centered 20c vermilion, with Re-entry (Position 2) in Crown, "P" of "POSTAGE" and extension of frameline at lower right, tied by neat Montreal "VICTORIA 1897" flag cancellation, very pretty **Est. 500.00**
- 187 ☒ #60, 1897 (June 26) A clean and fresh cover addressed locally, franked with a well centered 50c ultramarine and tied by neat Montreal "VICTORIA 1897" flag cancellation, choice, VF **Est. 500.00**



- 188 ★ #62-65, 1897 \$2-\$5 Jubilee High values of the set, all with fresh colours, \$2 and \$4 with lightly disturbed OG, \$3 quite well centered with OG, hinged, and \$5 unused without gum. A Fine group **4,800.00**



189



190

- 189 ⦿ **#63, 1897 \$3 Yellow Bistre** An attractive used example with deep colour and showing a neat Toronto (AP 26 98) split ring cancellation, F-VF **1,125.00**
- 190 ⦿ **#65, 1897 \$5 Olive Green** A stunning used example, very well centered within unusually large margins, lovely fresh colour and with light unobtrusive cancel. A premium quality stamp, VF JUMBO **1,500.00**

QUEEN VICTORIA "LEAF" AND "NUMERAL"



191



192

- 191 ★ **#67, 1897 1c Blue Green Queen Victoria "Leaf"** A remarkably well centered mint example within unusually large margins, lovely fresh colour and possessing full pristine original gum. A great stamp in all respects, XF NH **180.00+**
- 192 ★ **#67, 1897 1c Blue Green Queen Victoria "Leaf"** An outstanding mint example, showing exceptional centering within large margins, post office fresh colour and crisp impression, full immaculate original gum and oversized margins, never hinged. A superb stamp for the perfectionist, XF NH GEM **Est. 250.00+**
- 193 P **#70, 5c Dark Blue Queen Victoria "Leaf"** Plate proof pair on card mounted india paper, choice, VF *(Not Illustrated)* **600.00**



194



195



- 194 ★ **#71i, 1897 6c Brown Queen Victoria "Leaf"** A remarkable mint example showing the elusive Engraver's Slip at foot (Position 14, Left Pane), reasonably centered and with full original gum. An interesting and quite noticeable plate variety missing from most advanced collections, F-VF NH **2,400.00**
- 195 ★ **#71ii, 1897 6c Brown Queen Victoria "Leaf"** A very scarce mint example showing Re-entry at lower right, just outside frameline (Position 72), fresh and with full original gum, Fine+ NH **1,000.00**



196

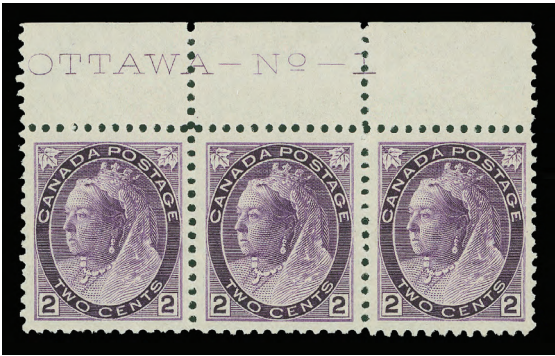


197



198

- 196 ★ #74, 1898 ½c Black Queen Victoria "Numeral" A stunning mint example, well centered within unusually large margins, fresh and crisp with full original gum, XF NH JUMBO **45.00+**
- 197 ★ #75, 1898 1c Grey Green Queen Victoria "Numeral" Mathematically centered mint example, fresh and with crisp impression and full original gum. Rarely seen with such exceptional centering, XF NH GEM **Est. 200.00+**
- 198 ★ #76, 1898 2c Purple Queen Victoria "Numeral", Die I Post office fresh and well centered mint example on fresh paper, possessing full pristine original gum, XF NH **180.00+**



- 199 ★ #76, 76iii, 1898 2c Purple Queen Victoria "Numeral" Die I A choice Plate No. 1 mint strip of three, showing the Re-entry (Position 1L5) on left stamp, noticeable in "TWO CENTS" and surrounding oval, well centered, lovely fresh colour and with full original gum. An attractive plate multiple for the specialist, VF NH **780.00+**



200



201



202

- 200 ★ #84, 1900 20c Olive Green Queen Victoria "Numeral" A choice mint example, nicely centered, with deep colour and full original gum, VF LH **900.00**
- 201 ★ #87, 1899 2c on 3c Carmine Queen Victoria "Leaf" Provisional Exceptionally well centered mint example with deep colour and full pristine original gum, XF NH **Est. 100.00+**
- 202 ★ #88, 1899 2c on 3c Carmine Queen Victoria "Numeral" Provisional A selected fresh and well centered mint example with full original gum, VF NH **120.00**



KING EDWARD VII AND QUÉBEC TRICENTENARY



- 203 ★ #90b, 1903 2c Carmine, Type II Mint booklet pane of six stamps, usual glazed gum from glassine interleave sheet, reasonably centered and very scarce, F-VF OG **1,625.00**



- 204 ★ #90iii, 1903 2c Carmine, Type I (Plate 1 and 2) Imperforate block of four with sheet margin at foot, full margins on other sides, fresh colour and ungummed as issued. A rare multiple, VF **2,200.00**



- 205 ★ #91, 1903 5c Blue on Bluish Paper Mint Plate No. 2 strip of four, lovely bright fresh colour on fresh paper, vertical crease on right stamp, well centered, lightly hinged in selvage only, leaving all stamps never hinged. A scarce and attractive plate multiple, VF NH (Catalogue value is for stamps only) **4,200.00**



- 206 ★ #91, 1903 5c Deep Blue on Bluish Paper Well centered mint block of four with rich shade, possessing full original gum, never hinged. A scarce multiple to find, VF NH **4,200.00**



207



208

- 207 ★ #93, 1903 10c Brown Lilac A choice mint block of four in an unusually deeper shade, well centered for this notoriously difficult stamp and with full original gum. A rarely seen multiple in superior quality, VF-XF LH **2,600.00**
- 208 ★ #93, 1903 10c Brown Lilac A beautiful mint block of four, with razor-sharp impression and bright fresh colour, very well centered, which are uncharacteristic for this tough stamp, full original gum. A choice multiple, XF OG **2,600.00**



- 209 ★ #94, 1904 20c Olive Green A stunning mint example, quite well centered within enormous margins, bright fresh colour and crisp impression, VF VLH JUMBO **1,000.00+**



210 ★ #96ii-103ii, 1908 ½c-20c Québec Tercentenary Issue An exceptional set of eight imperforate pairs, all with deep colours characteristic of the first printing, each with balanced large margins, fresh and ungummed as issued. A rarely offered complete set in choice condition, XF **8,000.00+**



211 ★ #99-102, 1908 5c-15c Québec Tercentenary Issue Four different mint blocks of four, all with fresh colour and full original gum never hinged; 5c with sheet margin at right, left pair is centered, 7c exceptionally well centered, 10c with sheet margin at foot, slight perf stain on upper left stamp, 15c with negligible perf stains on left pair, upper right stamp is superb. A nice group Fine to Very Fine **6,450.00**

212 ★ #103, 1908 20c Brown Cartier' Arrival Post office fresh mint block of four, reasonably centered and with full original gum, F-VF NH **3,000.00**

Admiral



Featuring

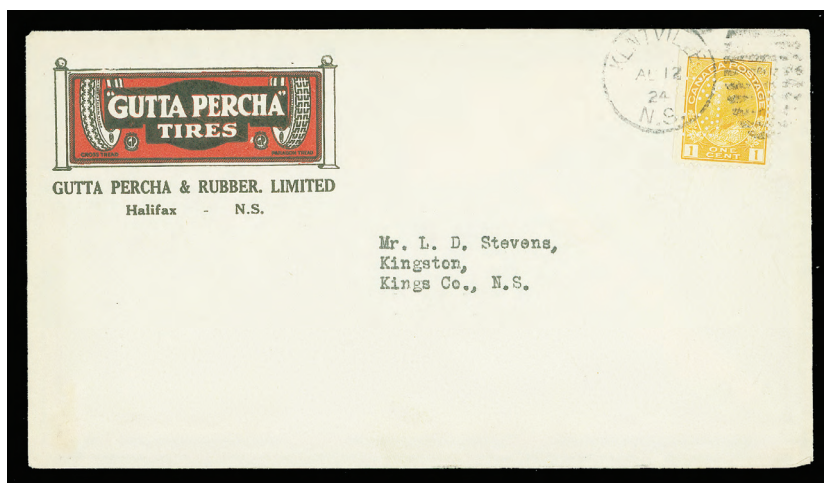
*Scarce lathework multiples,
plate blocks, imperforates,
better provisionals and
War Tax issues.*

*See also Canada large lots and
collections for Admiral issue
lots and postal history.*

**Lots 213 - 262
310 - 319**



KING GEORGE V “ADMIRAL”



- 213 ☒ #105, 1924 (August 12) Gutta Percha Tires illustrated cover, unsealed, franked with single 1c yellow Die I with Maltese Cross perfin, straight edge at left, tied by Kentville duplex cancel, attractive usage of a perfin on a clean advertising cover, VF **Est. 100.00+**



X214



215

- 214 ★ #105, 105e, 1922 1c Orange Yellow, Die I (Wet Printing) and 1c lemon yellow shade, Die I (Wet Printing) Mint blocks of four, both with Type D inverted lathework, full original gum. A distinctive duo, fresh and F-VF LH **500.00**
- 215 ★ #105f, 1924-1925 1c Yellow, Die I (Dry Printing) Mint block of six, showing Type D lathework, lower right stamp hinged and one staple hole in selvage at left, otherwise left block of four is never hinged, F-VF **950.00**
- 216 ★ #105f, 1924-1925 1c Yellow, Die I (Dry Printing) Lower left corner mint block showing full Type D lathework and Toronto Style 12, double precancel variety, fresh with full original gum. A striking multiple, ideal for the advanced collector, F-VF NH *(Illustrated on Page 65)* **Est. 400.00+**
- 217 ★ #106, 1919-1920 2c Carmine (Wet Printing) Nicely centered mint block of four, showing full Type B lathework and with doubling (8mm long), lower left stamp with natural paper inclusion, hinged at top only, lower pair is VF NH *(Illustrated on Page 65)* **600.00**



216



217



218



219

- 218 ★ #106x, 1915 2c Rose Red Admiral Experimental Coil Two pairs with two different shades with neat Type A backstamp over paste-up pairs, full original gum, lightly hinged on right stamp only, VF **500.00**
- 219 ★ #106x, 1915 2c Deep Rose Red Experimental Coil Mint strip of four showing Type A backstamp over paste-up pairs, stamps are fresh, couple short perfs at left, otherwise with full original gum, F-VF NH **800.00**
- 220 ★ #107c, 1922 2c Yellow Green (Wet Printing) Mint booklet pane of six, reasonably centered, F-VF LH *(Not Illustrated)* **360.00**



- 221 ★ #108, 1918 3c Deep Brown (Wet Printing) Mint pair with Type D lathework and 3c Brown (Wet Printing) mint pair with Type D inverted lathework; with distinctive shades, F-VF LH duo **600.00**



222



223

- 222 ☒ **#108**, Clean Blenkhorn & Sons advertising envelope franked with single 3c brown Admiral (Position 100) showing Type D inverted and tied by light Canning CDS postmark (date and year illegible), addressed to Kingston, Nova Scotia. A scarce lathework usage on cover, F-VF **Est. 150.00**
- 223 ★ **#108ii**, 1918 3c Dark Brown (Wet Printing) Lower right corner mint block of four showing large portion of cutting guideline and full Type D inverted lathework, quite well centered, deep rich colour and with full original gum, lightly hinged at top only, lower pair is NH, F-VF **450.00**



- 224 ☉ **#109**, 1923 3c Carmine, Die I (Dry Printing) Bottom Plate A126 block of eight, with full Type D lathework, used with light CDS postmark, minor flaws on right pair insignificant for this scarce multiple, F-VF **Est. 300.00+**



- 225 ★ **#109**, 1923 3c Carmine, Die I (Dry Printing) Lower right sheet corner mint block of twenty (Pos. 81-100), unusually well centered with fresh colour, full pristine original gum, VF NH **1,620.00**



- 226 ★ #109var., 1923 3c Carmine, Die I (Dry Printing) Lovely mint example showing a Major Re-entry (appears to be Pos. 123UR51) noticeable in "THREE CENTS", the bottom line of both lower value tablets, and inside the lower oval surrounding the portrait, appealing, Fine NH **Est. 200.00+**



227



229

- 227 ★ #110, 1922 4c Olive Yellow (Wet Printing) Mint block of four with unusually deep colour showing Type D inverted lathework, full original gum, the bottom pair is beautifully centered. A nice lathework multiple, F-VF NH **675.00**



- 228 ★ #110a, 1925 4c Olive Bistre (Dry Printing), Imperforate A choice and fresh imperforate mint pair with full and balanced margins, full original gum, lightly hinged. Difficult to find and scarce so nice, VF LH **3,000.00**
- 229 ★ #112, 1922 5c Violet (Wet Printing) Lovely fresh mint block of four showing full Type D lathework in bottom margin, full original gum, Fine+ LH **300.00**



- 230 ★ #112a, 1924 5c Violet on Thin Paper (Wet Printing) A gorgeous fresh Plate A21 block of ten, reasonably centered, two light hinge marks on top left and top right pair only, leaving six stamps NH, VF
Est. 400.00+



- 231 ★ #114, 1924 7c Red Brown (Dry Printing) Mint block of forty (Plate 7 UL, Pos. 1-40), selvedge missing on pos. 9 and 10, fresh and many stamps well centered, hinged in selvedge only, all stamps are F-VF NH
1,620.00



- 232 ★ #114b, 1924 7c Red Brown (Wet Printing) An attractive horizontal pair, showing Type D lathework in bottom selvedge and Toronto Style 10 (shifted) precancel, with large part original gum. A neat item for the specialist, F-VF OG
Est. 200.00



- 233 ★ #115, 1925 8c Blue (Dry Printing) Imperforate pair mint, large margins and lovely fresh colour, faint pressed wrinkle but much nicer than most we have seen, very scarce, VF NH **6,000.00**



234



235

- 234 ★ #116, 1917 10c Plum (Wet Printing) Mint single showing full Type A lathework in bottom selvage, deep rich colour and full original gum, Fine NH **750.00**
- 235 ★ #117, 1922 10c Deep Blue (Wet Printing) An attractive mint example with rich colour, reasonably centered and showing a better impression of the Type D lathework than normally seen, full original gum, F-VF LH **Est. 400.00**



236



237

- 236 ★ #120, 1925 50c Black Brown (Re-engraved; Dry Printing) Nicely centered fresh mint block of four, tiny gum inclusion on lower left stamp, otherwise VF NH **1,440.00**
- 237 ★ #120b, 1925 50c Black Brown (Re-engraved; Dry Printing) An impressive imperforate mint pair, usual light wrinkles as often seen on these imperforate issues, four large even margins, lovely fresh colour and possessing full original gum, lightly hinged. Only 50 pairs exist, VF LH **3,600.00**



-238-



X239

- 238 ★ #123-124, 1913 1c Dark Green and 2c Carmine, Perf 8 Horizontally A selected mint set of two coil singles, well centered for the issue, lovely fresh colour and with full original gum, VF NH **900.00**

- 239 ★ #123i-134i, 1913-1924 1c-3c Admiral Paste-up Coil Pairs Complete mint set of twelve, all with full original gum, Fine+ hinged **772.50**



- 240 ★ #123, 1913 1c Dark Green, Perf 8 Horizontally A post office fresh and well centered mint single of this challenging coil issue, full and intact perforations, rich colour and with full original gum, VF NH **450.00+**



241



-242-



- 241 ★ #124var., 1913 2c Rose Red Admiral, Perf 8 Horizontally Well centered mint coil pair, showing end of roll paste-up blank tab at foot, very rare thus, full original gum hinged only at top. Among the very few we have seen and ideal for the specialist, F-VF OG-NH **Est. 500.00**

- 242 ★ #126ac, 128ai, 1924 1c Yellow, Die I and 2c Green (Wet Printings), Perf 8 Vertically Part Perforate Coil (Sheet Form), mint blocks of four, both centered with deep colour, 2c block with small gum wrinkle on upper left stamp, otherwise VF NH, exceptionally nice for these **3,000.00**



243 ★ #128a, 1924 2c Green (Dry Printing), Perf 8 Vertically Part Perforate Coil (Sheet Form), complete sheet of 100, issued without plate imprint, unusually well centered, fresh and with full original gum, folded between sixth and seventh columns, natural gum skip, a scarce intact sheet, VF NH 3,000.00



244 ★ #128ai, 1924 2c Green (Wet Printing), Perf 8 Vertically Part Perforate Coil (Sheet Form), very well centered mint block of four, showing usual small portion of Type D lathework in bottom sheet margin, possessing full original gum, never hinged. Rarely found in such nice quality, VF NH 2,500.00



245



246

- 245 ★ **#130a, 1924 3c Carmine, Die I (Wet Printing), Perf 8 Vertically Part Perforate Coil (Sheet Form),** quite well centered mint pair, with deep colour and impression, tough to find, VF NH **2,400.00**
- 246 ★ **#130a, 1924 3c Carmine, Die I (Wet Printing), Perf 8 Vertically Part Perforate (Sheet Form),** unusually well centered mint block, deep rich colour and showing trace of Type D lathework, full original gum. Seldom encountered especially in choice condition, VF LH **2,250.00**



- 247 ★ **#130b, 1924 3c Carmine, Die II (Dry Printing), Perf 8 Vertically** Quite well centered mint strip of four, lovely fresh colour and with full unblemished original gum, scarce printing, VF NH **1,250.00**



X248



249

- 248 ◎ **#136-138, 1924 1c, 2c & 3c King George V "Admiral" Imperforate** Selected used blocks of four with CDS postmarks, VF **900.00**

- 249 ★ #136, 1924 1c Yellow (Wet Printing), Imperforate Lower left sheet corner mint block of four, showing Type D inverted lathework, full original gum, lightly hinged in bottom selvage, stamps are NH. An attractive lathework multiple, VF *(Illustrated on Page 72)* **1,000.00**



- 250 ★ #136, 1924 1c Yellow, Die I (Wet Printing), Imperforate Upper right Plate A179 strip of twenty stamps, fresh mint with full original gum, VF NH **2,200.00**



- 251 ★ #136, 1924 1c Yellow, Die I (Wet Printing), Imperforate Upper right Plate A179 strip of twenty stamps, fresh with full original gum, lightly hinged in top selvage only, all stamps never hinged, VF **2,000.00**



- 252 ★ #136, 1924 1c Yellow, Die I (Wet Printing), Imperforate Lovely fresh mint Plate A180 block of ten stamps, large margins, full original gum, five stamps are never hinged, VF **600.00+**



- 253 ★ **#137, 1924 2c Green (Wet Printing), Imperforate** Upper right Plate A188 strip of twenty stamps, fresh, full original gum, lightly hinged in top selvage only, all stamps never hinged, VF **2,000.00**

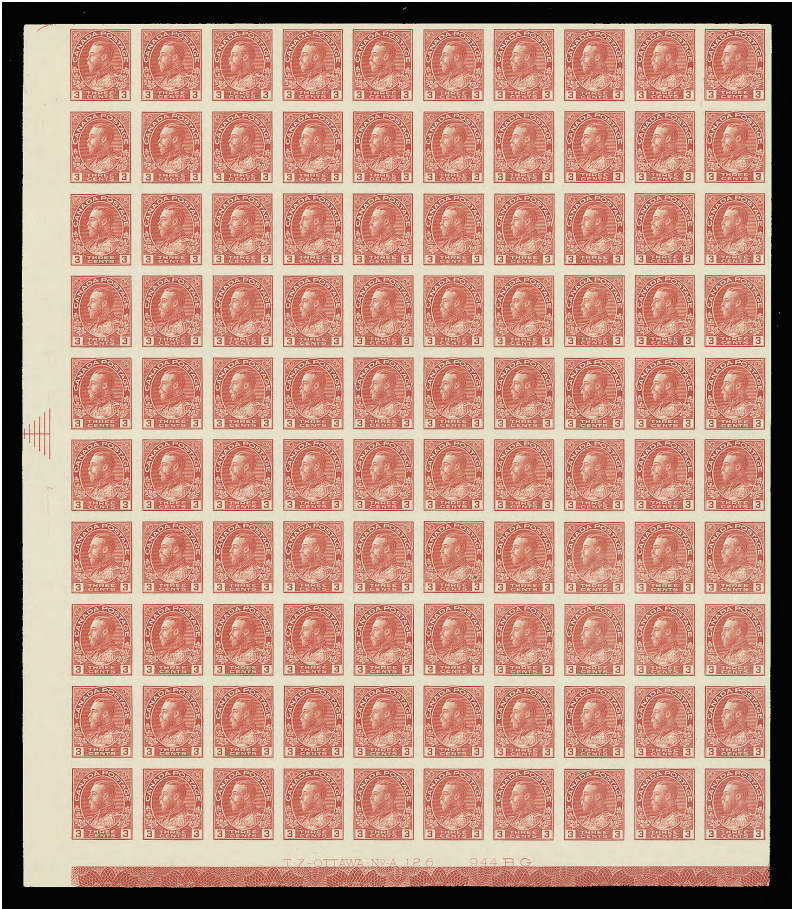


- 254 ★ **#137, 1924 2c Green (Wet Printing), Imperforate** A choice and fresh mint Plate A188 block of eight stamps, lightly hinged on top centre pair only, leaving others never hinged, VF **700.00**



- 255 ★ **#138, 1924 3c Carmine, Die I (Dry Printing), Imperforate** Lower left Plate A126 strip of twenty stamps, showing full Type D lathework, fresh and with full original gum, VF NH **1,980.00**

Fax your Bid(s) toll free in North America
Dial 1(888) 867-8267



256 ★ #138, 1924 3c Carmine (Dry Printing), Imperforate Mint lower left Plate A126 sheet of 100, with full Type D lathework and showing pyramid guidelines at left, small sealed tear at foot below stamp position 92, a few typical gum blemishes and light natural gum bends, a scarce intact sheet, VF NH
6,195.00



257 ★ #139a, 1926 2c on 3c Carmine, Die I, One-Line Provisional Surcharge Top sheet margin mint block of four, showing the with and without surcharge variety, lightly hinged in selvedge only leaving stamps never hinged. Catalogue value is irrelevant for this rare and underrated multiple, Fine NH
Est. 1,000.00+



- 258 ★ #139a, 1926 2c on 3c Carmine, Die I, One-Line Surcharge Provisional A rare mint pair with and without surcharge, quite well centered, missing from most advanced Admiral collections, VF LH **450.00+**



259



260

- 259 ★ #139v, 1926 2c on 3c Carmine, Die I, One-Line Surcharge Essay Unusually well centered vertical mint pair, showing the large surcharge on top stamp and small surcharge on bottom stamp, perforations slightly clipped at top and at bottom, light horizontal crease at top, otherwise never hinged and scarce, VF **Est. 1,000.00**
- 260 ★ #140, 1926 2c on 3c Carmine, Die I, Two-line Provisional Surcharge Nicely centered top Plate A115 mint block of eight, very light foxing in top margin only, otherwise fresh and with full original gum, VF NH **675.00**



261



262

- 261 ◎ #140a, 1926 2c on 3c Carmine, Die I, Two-Line Provisional Surcharge Nicely centered used example showing a Double Surcharge error, light CDS postmark, scarce and unpriced as used in Unitrade catalogue, VF (Also includes a fake "triple" surcharge on 3c carmine Admiral; the work of Andre Frodel) **Est. 300.00+**
- 262 ★ #140b, 1926 2c on 3c Carmine, Die I, Two-Line Provisional Surcharge Reasonably centered, unused without gum, showing a clear and appealing Triple Surcharge error, unusual, F-VF **250.00**

KING GEORGE V ERA



- 263 ★ #158, 1929 50c Dark Blue Bluenose Well centered mint Plate A3 horizontal pair, very well centered and fresh with full pristine original gum, XF NH **1,400.00+**



- 264 ★ #158, 1929 50c Bluenose Nicely centered mint Plate A3 (UL position) block of four, bright colour and with full pristine original gum. Catalogued as singles only, VF NH **2,800.00**



- 265 ☒ #158, 118, 1929 (May 16) Airmail envelope franked with single 10c bistre brown and 50c Bluenose, both well centered and neatly tied by Montreal CDS postmark, sent to Arequipa, Peru, via Miami and Cristobal, Canal Zone transit (MAY 24) and receiver (27 MAY) backstamp. A clean and attractive usage of the Bluenose on cover, VF **Est. 250.00+**



- 266 ★ #159, 1929 \$1 Olive Green Parliament Post office fresh mint Plate A1 block of four, showing much of the imprint at top, scarce, full original gum never hinged, almost Very Fine centering **2,550.00+**



- 267 ★ #184, 1931 3c Carmine, Die II Provisional Perf 12x8 Unusually well centered mint Plate A14 block of eight stamps, fresh and with full pristine original gum, VF NH **240.00+**



268



269

- 268 ★ #190a, 1931 10c Dark Green George Etienne Cartier A pristine fresh imperforate mint pair, with full original gum, scarce in choice condition, VF NH **1,300.00**

- 269 ★ #197b, 1932 3c Deep Red Medallion, Die I, Rotary Press A choice imperforate mint pair with full even margins, lovely fresh colour and full pristine original gum, XF NH **700.00**



270



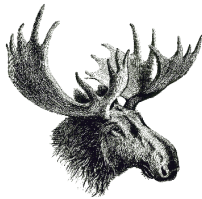
271

- 270 ★ #204a, 1933 5c Dark Blue Royal William Imperforate vertical mint pair with sheet margin at foot, fresh VF LH **800.00**
- 271 ★ #204a, 1933 5c Dark Blue Royal William Mint imperforate vertical pair, fresh and choice with full original gum, each stamp with "HHH" owner's handstamp on back, VF NH **1,600.00**



- 272 ★ #221a, 1935 5c Blue King George V Fresh mint horizontal pair, imperforate vertically, well centered for this perforation error, with full original gum, VF NH **450.00**

Take advantage of our easy and convenient ways to place your bids.



Call us toll free in North America
Dial 1(800) 667-8267
or
Fax 1(888) 867-8267

For our overseas customers please use the following:
Phone 1(506) 548-8986 - Fax 1(506) 546-6627

You can also visit our Website www.easternauctions.com
E-Mail your bids to easternauctions@nb.aibn.com



ELIZABETHAN
MODERN ERRORS AND VARIETIES



- 273 P #374, 1957 Royal Visit Progressive die proof of the central vignette only, showing portraits of Queen Elizabeth and Prince Philip, engraved in black on india paper, measuring 87 x 90mm, mounted on thick card, 139 x 110mm, with plastic flap, very rare and the only one we have seen, VF **Est. 500.00+**



- X274
- 274 ★ #455xx, 1967 2c Green Centennial Precancelled matched set of corner blocks of four, all with full original gum, VF NH **720.00**
- 275 ★ #465ii, 1971 25c Slate Green Centennial, HB, DEX Matched set of blank (as issued) corner blocks of four, VF NH *(Not Illustrated)* **500.00**
- 276 ★ #465pi, 1971 25c Slate Green Centennial, HB, DEX, W2B Matched set of blank (as issued) corner blocks of four, scarce, VF NH **1,000.00**



277



278



279

- 277 ★ **#468Aii, 1969 6c Orange, Hibrite Paper, DEX** A remarkable imperforate strip of three, nicely centered within large margins, fresh and with full pristine original gum. A key and important Centennial issue that is missing from most advanced collections, without the usual faults that plague this variety, XF NH GEM (catalogued as a pair) **4,000.00+**
- 278 ★ **#468Bd, 1970 6c Black, Die II, Hibrite Paper, DEX** Post office fresh and reasonably centered imperforate mint pair on this very scarce paper, full pristine original gum, F-VF NH **3,500.00**
- 279 ★ **#549a, 1971 7c Emerald Green, Hibrite Paper, DEX** A very scarce and choice imperforate coil pair, well centered and with full immaculate original gum, XF NH **1,500.00**



280



281

- 280 ★ **#614a + var., 1973 15c R.C.M.P. Musical Ride** A striking imperforate mint pair, showing the 10c Spectrograph design on 15c variety on top stamp, minute wrinkle mentioned for strict accuracy only, VF NH **Est. 1,000.00**
- 281 ★ **#841a, 1979 (35c) Knitted Stuffed Doll** Left sheet margin mint example with gold inscriptions and tagging omitted. A striking and very scarce modern error, VF NH **1,750.00**



- 282 ★ #1164aii, 1164d, 1988 38c Queen Elizabeth II, Ashton Potter Printing, Perf 13x13½ Mint block of six with four stamps and two labels originating from a miscut booklet pane, as a result imperforate vertically between stamp and label on top right pair and imperforate between on bottom right pair. A rare positional multiple for the advanced collector, VF NH, ex. *Sir Gawaine Baillie* 3,000.00+



283



284

- 283 ★ #1165d, 1988 32c Parliament, Slater Paper Lower left (blank) corner mint block of four, showing a double impression of all lithographed colours, scarce, VF NH 1,750.00
- 284 ★ #1181bi, 1989 \$1 Runnymede Library, Plate 1 (British American Bank Note Printing) Vertical mint strip of five sheet margin at top and at foot with top pair imperforate, very scarce as only 25 pairs are reported, VF NH 2,000.00



- 285 ★ #1356d, 1356di, 1991 42c Flag over Hills, Ashton-Potter Printing, Perf 13½x13 An impressive mint block of sixteen consisting of fourteen stamps and two labels, originating from a mis-guillotined booklet pane, imperforate horizontally between second and third row; resulting in three vertical pairs imperforate between and one very rare vertical pair imperforate between stamp and label. Former with only 24 known and latter with TWO KNOWN, very rare thus and a most desirable multiple, VF NH, ex. Sir Gawaine Baillie **6,600.00+**



- 286 ★ #1358ai, 1992 43c Queen Elizabeth II Imperforate mint pair with enormous margins, choice, XF NH **1,200.00**



- 287 ★ #1376a, 1994 \$2 Provincial Normal School, Leigh-Mardon Printing, Perf 14½x14 Left sheet margin mint example with black colour (engraved) inscriptions omitted, very scarce and striking, VF NH, 2007 Greene Foundation cert. **1,500.00**



288



289

- 288 ★ **#1441a, 1992 42c Canada in Space** Upper left sheet corner se-tenant horizontal pair, showing the elusive **SILVER OMITTED ERROR** on left stamp. A very rare and sought-after modern error, VF NH, 2008 Greene Foundation cert. **3,750.00**
- 289 ★ **#1878ii, 2000 (47c) Stylized Maple Leaf, Serpentine Die Cut 8.5 Horizontally** Self-adhesive coil single with blue inscriptions omitted, striking and very scarce, VF NH **900.00**



- 290 ★ **#1932a, 2002 48c Queen Elizabeth II** A choice and scarce imperforate mint pair, sheet margin at right and full margins on other sides, XF NH **2,000.00**



291



292

- 291 ★ **#1932iv, 2002 48c Golden Jubilee** Lower left plate inscription block of four, left selvage perforated, stamps are imperforate. An appealing modern error, VF NH **3,000.00**
- 292 ★ **#1932var., 2002 48c Golden Jubilee** Appealing mint example showing a dramatic printing shift of the portrait (5mm to right), unusual and quite impressive, VF NH **Est. 500.00**

BOOKLET



- 293 ★ #BK1, 1900 2c Queen Victoria "Numeral" Complete Booklet Red binding over pale rose covers, English inscriptions, containing both booklet panes of six stamps, Die II, reasonably centered, fresh and shows full pristine original gum, never hinged, plus all insert pages and interleaves, slight soiling spots on front cover, negligible for this rare complete booklet, content is pristine and quality is much superior than normally encountered, F-VF NH **4,500.00**



- 294 ★ #BK1, 1900 2c Queen Victoria "Numeral" Complete Booklet Red binding under pale rose covers, English inscriptions, containing both booklet panes of six stamps, Die II, quite well centered with fresh colour and full immaculate original gum, never hinged, and all insert pages and glassine interleaves, couple slight blemish spots on front cover mentioned for strict accuracy only, a rare intact booklet, content is pristine and the nicest we call recall, ideal for the advanced collector, VF NH **6,750.00**



295



296



- 295 ★ **#BK3eE, 1c Green** Complete booklet, in English, containing all four panes of six stamps, fresh and centered with full original gum, never hinged, rate change overprint on covers, unmarked and fresh. A choice booklet, VF NH *(Illustrated on Page 85)* **375.00**
- 296 ★ **#BK8bE, 3c Carmine Admiral** Complete booklet, in English, slogan (large capitals) inside pages, containing both panes of four plus two labels, full original gum, never hinged, light rub mark and slight crease on front cover only, otherwise Fine and seldom seen *(Illustrated on Page 85)* **450.00**



297



298

- 297 ★ **#BK9aF, 1923 1c Yellow, 2c Green & 3c Brown** Complete booklet in French, with dull blue covers, dark green binding tape at left and with war tax rate pages inside; panes are fresh and never hinged, erasures and small surface thin on front cover, surface thins on back cover, still a rarely seen booklet, Fine appearance **1,200.00**
- 298 ★ **#BK10bE, 1922 1c Yellow, 2c Green & 3c Carmine** Complete booklet in English with blue covers, no binding tape at left, large slogan pages inside; panes are reasonably centered and NH, light erasures on front cover and some thins on back cover, a scarce booklet, Fine **600.00**



299



300

- 299 ★ **#C3a, 1932 6c on 5c Brown Olive** Fresh mint single with inverted surcharge error, full original gum, F-VF NH **320.00**
- 300 ★ **#C3b, 1932 6c on 5c Brown Olive** Mint example of this scarce double surcharge error, centering better than normally encountered, fresh and with full original gum, Fine+ VLH **850.00**





- 301 P #CL47iii, (10c) Commercial Airways, AIR FEE Imperforate proof pairs (Position 1 and 2) in black and in deep orange, on thick coated paper; both with surrounding sheet margin on three sides, seldom seen and attractive, VF **1,000.00**



302



303

- 302 P #E1, 1898 10c Blue Green Special Delivery A selected plate proof in colour of issue on card mounted india paper, four large margins, lovely fresh colour and sharp impression, very scarce, XF **Est. 750.00**

- 303 ★ #E1a, 1898 10c Green Special Delivery An exceptionally well centered mint block of four, with post office fresh colour and lovely clear impression, possessing full pristine original gum, never hinged. Rarely seen multiple in such superior quality, ideal for the perfectionist, XF NH GEM **1,800.00+**



- 304 ★ #E2, 1926 20c Carmine (Dry Printing) Very well centered mint example with bright fresh colour and impression, possessing full pristine original gum. A choice stamp in all respects, XF NH **450.00+**



305



307

- 305 ★ **#F1, 2c Orange Registration on Vertical Wove Paper, Perf 12** A striking upper left corner mint example showing "TWO CENTS" imprint, bright colour and with full original gum, Fine+ OG
Est. 150.00



- 306 ★ **#F1b, 1888 2c Rose Carmine Registration, Perf 12** A stunning mint example of this scarcer shade, exceptionally well centered within balanced oversize margins, deep rich colour and impression on fresh paper, possessing full unblemished original gum, never hinged. A superb stamp for the meticulous collector and certainly ranks among the finest we have seen, XF NH JUMBO, 2000 PF cert.
Est. 2,000.00+
- 307 ★ **#F3ii, 1876 8c Dull Blue Registration** Well centered unused example showing the elusive horizontal guideline through "I" of "EIGHT" at left, bright colour, VF
1,000.00



308



309

- 308 ◎ **#J2a, 1924 2c Violet on Thin Paper** Right margin Plate No. A4 block of six, well centered, used with clear Winnipeg (DE 18 24) CDS postmarks, some trivial perf separation, negligible for this scarce used plate multiple, VF
Est. 250.00+
- 309 ★ **#J7, 1930-1932 5c Dark Violet** Mint Plate 1 (bottom) block of four, with plate number through perforation as normally seen, fresh and with full original gum, VF NH
675.00

KING GEORGE V “ADMIRAL” WAR TAX



- 310 ★ #MR1-MR2, 1917 1c Green War Tax and 2c Carmine Mint blocks of four with full Type B lathework, 1c with light offset on left pair, otherwise fresh well centered, F-VF NH **625.00**



- 311 ★ #MR2B-MR2D, 1915 5c, 20c & 50c Two-Line "WAR TAX" Overprint An outstanding mint set of three, each with superior centering for these difficult stamps, the 5c and 50c with oversized margins, all with full immaculate original gum, never hinged. This set is the toughest of all Admiral issues to find in superior condition as offered here, XF NH **4,450.00**



- 312 ◎ #MR2C, 1915 20c Olive Green "WAR TAX" Overprint Used block of four, with unframed "C.N.R. / MAR 3 / 1915" datestamps in blue, couple surface abrasion spots on upper right stamp, otherwise a rare multiple with early usage - was issued on February 15, Fine **Est. 300.00+**



- 313 ★ #MR2C, 1915 20c Olive Green (Wet Printing) "War Tax" Overprint A remarkable bottom Plate No. 3 inscription block of eight, reasonably centered with large margins, lovely fresh colour and with full original gum, never hinged; natural gum bend on three stamps, a normal occurrence on early plate multiples. A rare War Tax plate multiple, F-VF NH (Catalogue valuation is for stamps only, no premium added for plate inscription) **2,200.00+**



- 314 ★ #MR3, 1916 2c+1c Brown, Die II, Perf 12 Lower right sheet corner mint block of six, showing Type B lathework, fresh and reasonably centered with full pristine original gum, F-VF NH **545.00**



- 315 ★ #MR4, 1916 2c+1c Brown, Die II, Perf 12 Lower right sheet corner mint strip of four, with full Type A lathework and showing a clear DOUBLING of the lathework below stamp Position 98, reasonably centered, rich colour, lightly hinged in right selvage only, leaving stamps and lathework never hinged. A rarely seen positional multiple, ideal for the specialist, F-VF NH **Est. 1,000.00+**



- 316 ★ #MR4a, 1916 (September) 2c+1c Brown, Die I, Perf 12 A selected fresh and nicely centered mint example of this challenging stamp, with full original gum, VF OG **800.00**



- 317 ★ #MR4ii, 1916 2c+1c Yellow Brown, Die I, Perf 12 Left sheet margin block of four, imperforate vertically, light wrinkle on bottom pair, ungummed as issued. A scarce multiple, F-VF **950.00**



- 318 ★ #MR5, 1916 2c+1c Carmine, Die I (Wet Printing), Perf 12x8 Mint Plate A1 (UL) strip of twenty rejoined at centre, sixteen stamps are NH, also Plate A2 (UL) strip of twenty, full original gum, never hinged. A Fine and very scarce duo **Est. 750.00**



- 319 ★ #MR7iii, 1916 2c+1c Yellow Brown Admiral War Tax, Die I, Perf 8 Vertically Exceptionally well centered mint coil strip of four, one trivial short perf at right, lovely fresh colour and with full original gum, hinged, second stamp from left is never hinged, VF+ **1,500.00**



320



321



323



322

- 320 ★ #O9, 1949-1950 50c Lumbering "O.H.M.S." Official Well centered and fresh upper left Plate No. 1 block of four, with full pristine original gum, VF NH **2,400.00**
- 321 ★ #O9, 1949-1950 50c Lumbering "O.H.M.S." Official Well centered and fresh upper right Plate No. 1 block of four, with full pristine original gum, VF NH **2,400.00**
- 322 ★ #O9, 1949-1950 50c Lumbering "O.H.M.S." Official Fresh and well centered lower right Plate No. 1 block of four, with full pristine original gum, VF NH **2,400.00**
- 323 ★ #O9a, 1949-1950 50c Lumbering "O.H.M.S." Official Lower left plate No. 1 block of four showing the elusive no period after "S" (Position 47), well centered and pristine fresh with full original gum. A key plate positional multiple, VF NH **3,200.00**



- 324 ★ #O262-AC, 1942 \$1 Deep Blue Destroyer Mint vertical pair with 4-hole OHMS (Position A&C compound perforations; Wrigley RF10), full original gum and rare, F-VF NH **Est. 750.00**

CANADA REVENUES



325

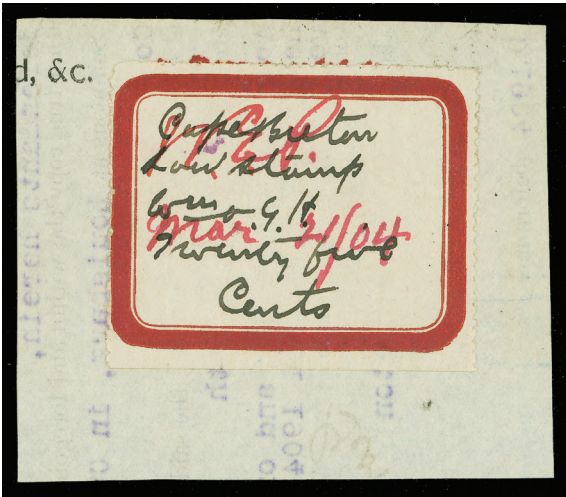


326

- 325 Ⓞ #ML13, 1877 (June-July) 10c Black Coat of Arms on Thick Orange Paper Manitoba Provisional Law issue overprinted "C.F." and numbered "44" and signed "A. Begg", tied by usual pen strokes on portion of legal document, dated "June 29 / 1877", large margins and fresh, attractive and scarce, VF 350.00+
- 326 Ⓞ #ML14, 1877 (June-July) 20c Black Coat of Arms on Thick Orange Paper Manitoba Provisional Law issue overprinted "C.F.", numbered "20" and signed "A. Begg", usual pen crossed markings tied to piece, very fresh and with large margins on all sides, scarce, VF 575.00



327



328

- 327 Ⓞ #NSC7, Cape Breton 1904 50c Provisional "Law Stamp" Octagonal red borders with inside manuscript markings; pen cancelled initials and "1904" date tied by albino seal at top on small piece of legal document, horizontal file fold, a F-VF example of this very rare revenue. Exceedingly rare, according to Van Dam only two examples have been reported 2,000.00+
- 328 Ⓞ #NSC11A, Cape Breton 1904 25c Provisional "Law Stamp" Red rounded borders (large format; 46 x 36mm) inside manuscript markings, with initials and date "Mar 21 / 04" cancelled by pen, affixed on piece of legal document. Very rare, according to Van Dam only three examples have been reported, VF 2,250.00+



- 329 ★◎ #NSC12-NSC19, Cape Breton Law Stamps Mint / Used Selection Group which includes used NSC12 (two singles on separate pieces), 13 (single on piece), mint NSC14 (NH; perf flaws at foot), 15 (NH), 16 (five NH), 17 (5; three are NH), 18 (3; two are NH), 19 (NH pair; trifle shorter perfs at left). F-VF Van Dam \$1,967. **Est. 500.00+**



- 330 ★ #SL2-SL12, 1907 10c-\$20 Saskatchewan Law Stamps (First Printing) A remarkable mint set of eleven stamps, missing only the low value 5c for completion, all from the same sheet position, bright fresh colours and quite well centered, all with full original gum. Accompanied with photocopy of detailed study on the issue by J.A. Calder, VF NH Van Dam valuation is for hinged only. **2,475.00+**

A VERY SCARCE SET WHICH ORIGINATED FROM THE UNIQUE COMPLETE SET IN SHEETS OF 25 WHICH WERE BROKEN UP BY THE LATE K. BILESKEI, ONLY ONE SET OF BLOCKS EXISTS; THE FIVE-CENT SHEET WAS SOLD INTACT SINCE IT SHOWED THE INVERTED CENTRE ERROR.



- 331 ★◎ Old-time Mint / Used Collection Nicely displayed on large quadrilled pages with detailed write-up on issues, covering Federal Bill Issue from 1864 to 1868, plus Gas, Light and Electricity Inspection, Weights & Measures. Very well covered throughout and virtually complete, including better valued items such as mint FB17, 35 (full OG, fresh), 53 lower right block, FWM33, also used FB12-16, 30, 33, 34, 36; FB23 + FB26 on 1866 Bill of payment; complete used FWM1 to FWM32, FG1-7, FG8 (3½mm red control), FG29a jump numbers horizontal strip of five, FE1-FE7, etc. Also a few Electricity and Measures used multiples, some on documents. Quality is very nice throughout, only a very few with some small flaws, but overall quality is much better normally encountered. Viewing is recommended to appreciate, Fine to Very Fine. Van Dam 2000 \$5,759. **Est. 2,000.00+**



- 332 ★◎ **Old-Time Quebec Revenue Collection** Nicely mounted on large quadrilled pages with detailed write-up, showing comprehensive Law Issues from 1864 to 1923 and Registration Stamps 1866 to 1871, with wide range of printings, shades and perforation varieties (catalogued as basic stamps only) from the 1871-1890 and 1893-1906 Laws issues and with many better valued items to be found, such as mint QL12, 13, 90, QR4, plus used QL29, 30, 31 (two shades), 55 pair and two singles, 44, 48, 50, 52, 96, etc. A few flaws noted, otherwise an excellent opportunity and mainly Fine to Very Fine throughout. Van Dam 2000 \$2,092. **Est. 600.00+**



- 333 ★◎ **Old-Time Ontario Revenue Collection** Nicely mounted on large quadrilled pages with detailed write-up, showing comprehensive Law Issues from 1864 to 1911, with wide range of printings, shades and perforation varieties (catalogued as basic stamps only) from the 1870-1911 issues and with better items, such as mint OL16 top plate imprint pair, OL31 & OL32 unused, used OL50, etc. A few flaws noted, otherwise an excellent opportunity and mainly Fine to Very Fine throughout. Van Dam 2000 \$630. **Est. 250.00+**

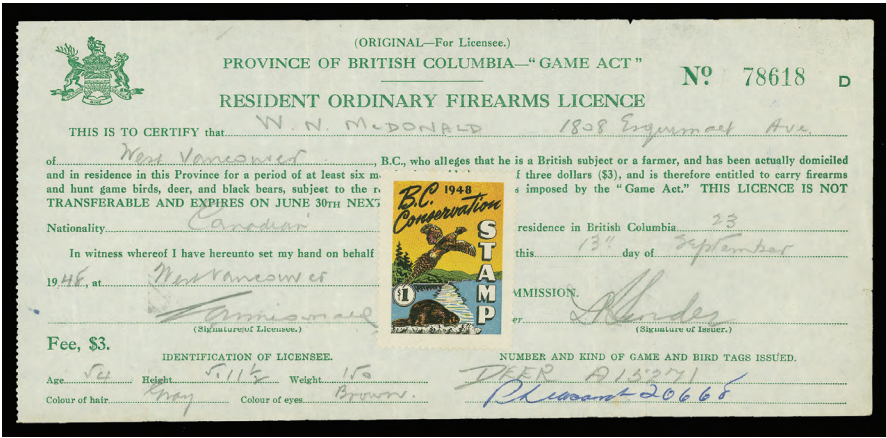
Call us toll free in North America
Dial 1(800) 667-8267
or
Fax us 1(888) 867-8267



- 334 ★◎ **Old-Time Revenue Collection** An interesting and extensive collection neatly displayed on large quadrilled pages with detailed write-up. Shows a wide range of issues, notably British Columbia Law issues and Telegraphs, Federal War Tax, War Savings and Excise Tax, etc. Includes numerous better valued stamps such as mint FX25, 37, 70, 72, 73, 64a, 102, 131, 132, 133, plus used FX48, 112 used (soiling and perf flaw at UL; otherwise scarce), 115, 128, mint FWS6a, FWS15, mint MR2B-MR2C (catalogued as F-VF with Unitrade), used AL6 plate reconstruction, mint BCL25 pair, BCL22 and BCL25 misperfs, 1912-1926 10c black BC Law showing major underprint variety, BCD2a booklet pane, TCP47 booklet pane of four, BCT176 proof booklet pane of six, BCT178 and 179 Specimen booklet panes, twelve different 1946-1954 BC Small Telephone Franks booklet panes; NBP3 50c single on Probate Court document dated May 21, 1897; QV1-QV9 Specimen set, plus much more. A few with small flaws but great majority in nice quality and offers an excellent opportunity for further expansion. Fine to Very Fine. Van Dam 2000 \$6,443. **Est. 1,500.00+**



- 335 ★ **CANADA DUCKS #BCD3a, 1948 \$1 Orange, Green and Blue Mint sheetlet of five stamps**, full original gum, minute thin spot and lightly hinged in top sheet margin, leaving stamps never hinged. A scarce sheet, F-VF **725.00**



- 336 ☒ **CANADA DUCKS #BCD3d, 1948 \$1 Orange, Green and Blue Resident Ordinary Firearms**
Licence with uncanceled stamp affixed at centre, light creases not touching stamp and seldom seen,
F-VF **400.00**

CANADA LARGE LOTS AND COLLECTIONS

- 337 ☒ **Interesting Cover Lot** Includes 32 covers mostly from KEVII and KGV era. Noted 3c Confederation pair on opened and sealed by censor cover to France; 2c War Tax (MR2) strip of four tied by Victoria, BC roller on registered cover to USA; 2c Map (two singles) used on cover from Boston addressed to Roxbury, Mass.; #86 and E1 usage on 1c green postal envelope dated 1899 from Montreal to Cape Breton; 1c yellow orange and 2c green Large Queen cancelled by double ring Douglastown Way Office, Miramichi, NB 1870 datestamp in blue (unusual), etc. Condition throughout is mixed to Very Fine. Inspect. *(Not Illustrated)* **Est. 500.00**



- 338 ★ **Small Queen to King George V Mint Collection** Nicely written-up and displayed on pages with plastic sheet protectors in a nice padded binder with slipcase, several dozen different stamps from the late 1890s to 1935, all regular issued stamps including coils. All mint throughout and starting with Small Queens (5), Jubilee ½c to 15c (latter is NH), Leaf ½c to 8c (5c NH), Numeral ½c to 7c, Edward VII 1c to 10c, 1908 Tercentenary set, King George V Admiral set, plus coils with #123-124 singles, 126-134 in pairs, 136-138 in pairs, King George V "Scroll" & "Arch" issues complete sets, including coil issues, 1933 Medallion set, 1935 George V Pictorial set, etc. Period well covered, overall quality ranges from unused (no gum) to gum problems on some earlier issues to mint hinged or never hinged, centering from Fine to Very Fine. Worth a look. **Est. 1,000.00+**
- 339 ★◎ **Clean Stock** Mainly mint throughout (includes one section of used perforated and overprinted Officials) of many dozen different, individually placed on cards, carefully identified and graded, starting from 1890s, noted mint LH #103i Major Re-entry, nice run of Admirals regular issues and coils, well covered from late 1920s to early 1950s, some back-of-book with dues, special delivery, airmails, etc. Condition is generally clean throughout and a useful lot for a show or internet dealer, Fine to Very Fine *(Not Illustrated)* **Est. 250.00+**
- 340 ◎ **Clean Used Stock** Many dozen used stamps, individually placed on cards and carefully identified and graded, starts with early Cents issues and well represented all the way to early 1950s, also some modern varieties, etc., followed by back-of-book airmails to War Tax. Noted some interesting cancellations with two-rings, neat CDS postmarks, used blocks of four, mid-price range (\$20 to \$50 items). Some light duplication throughout, but condition is nicer than normal. A useful lot for a show or internet dealer, Fine to Very Fine *(Not Illustrated)* **Est. 500.00+**



- 341 ★◎ Comprehensive Collection** As received and housed in a new deluxe "SAFE" hingeless album with slipcase, all mint from Small Queen issue to late 1950s. Starting with nice used #4d, Cents issues with #15 VF used pair, Large Queen set (mostly used), Small Queen #34-47 (mint OG or unused), mint #50-60, #61 (unused), #66-73, 74-84, 89-94, 96-103, 104-140, 149-159, 162-177, COMPLETE regular issues from 1932 to 1959 including coils, plus COMPLETE airmails, special delivery, overprinted officials; also postage dues First to Third issue complete, War Tax complete including MR2B-MR2D, Registration F1-F3. Some small flaws or gum problems to be expected on some earlier issues, but majority is clean mint, some NH noted on later issues. A solid basis for starting or for continuation, Fine to Very Fine. High catalogue value. *(Not Illustrated)* **Est. 2,000.00**
- 342 ★◎ Valuable Mint / Used 1852-1930s** Housed in three Plymouth Stanley Gibbons albums with slipcases, with many dozen different stamps all displayed in black mounts, starting with a few used Pence issues, followed by a wide range of Large Queens and Small Queens including papers, printings, shades and cancels, Jubilee used set complete to \$5. Quite complete both mint AND used from Leaf to 1930s; also with airmails, special delivery, officials, war tax, etc. Noted some odds & ends, covers, multiples, etc. Condition throughout is mixed, especially on pre-KGV era, but noted several nice and selected stamps throughout this extensive collection, Fine or better. Inspect. Scott 2009 over US\$40,000 *(Not Illustrated)* **Est. 3,500.00+**
- 343 ★◎ Balance of Admiral Issue Collection** Several dozen mint / used single stamps, multiples, coils and a few latheworks, etc. Noted #105 & 105f VF NH blocks of four, 2c rose red (#106) paste-up vertical strip of eight, #108 NH block of 15, #116 mint block of four (2NH), etc. Generally Fine to Very Fine. Worth a look *(Not Illustrated)* **Est. 750.00+**
- 344 ★ Admiral Issue Plate Multiples** Group of ten different; includes 1c green Plate 75 NH block of eight, 1c yellow Plate A173 and A192 strips of four, 2c carmine Plate 73 strip of four, 5c violet on thin paper Plate A21 block of six, stamps NH, 7c red brown, dry printing Plate A8 strip of four, stamps NH, 1c War Tax plate A1 strip of five, A2 strip of five, A4 strip of four (first two strips are no gum) and 2c War Tax Plate A10 NH block of six, Fine or better *(Not Illustrated)* **Est. 200.00**
- 345 ★◎ Eclectic Group** Noted Canada #19 used on piece tied by London, C.W. 1863 split ring, unused #63 (light stain on back), Revenue #FX2 NH block of four with Type D lathework, Newfoundland used C3a, a few USA issues, etc. Inspect. *(Not Illustrated)* **Est. 250.00**
- 346 ★ Semi-Official Airmail Mint NH Multiples** Five different issues; CL40, CL41 and CL46 in NH blocks of ten, CL48 NH pane of ten (now in blocks of four and six), and CL52 NH block of eight, F-VF or better centering (Unitrade \$890) *(Not Illustrated)* **Est. 250.00**



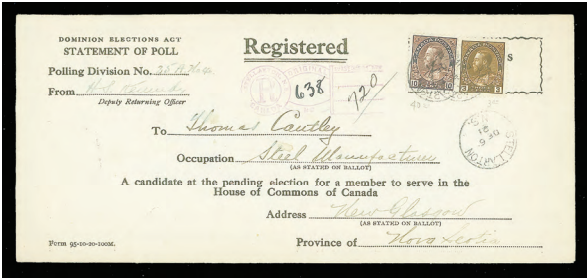
- 347 ★◎ War Tax Issue Collection** Several dozen mint and used mounted or in mounts on quadrilled pages, noted better items throughout such as mint singles of #MR2B-MR2D, MR2Bi, MR2Ci, MR3a, MR6-MR7, MR7a, etc. plus MR1 VF NH block of four, MR2Bi mint block, MR4b block of four (light crease on left pair), MR4i VF NH block of four; many nicely cancelled singles, some on piece, noted many RPOs, etc. Condition throughout is Fine to Very Fine **Est. 750.00+**
- 348 ☒ Admiral Issue First Flights** Nice collection of 68 covers, mostly First Flights from mid 1920s to mid 1930s, wide range of flight cachets, departures, frankings; noted One cent yellow Admiral postal card, franked with two US stamps, departing from Los Angeles and with Round the World cachet, Canada CL2 on 1924 cover (stamp with trivial fault), scarcer usage of part perforate (sheet form) issues, coils, booklet panes, mixed issue frankings, etc., most are carefully displayed on "exhibit" pages. A clean and attractive lot, F-VF or better *(Illustrated on Page 99)* **Est. 500.00+**



-X348-



X349



X350

- 349 ☒ **World War I Postal History** Postcards from various scenes in Europe, On Active Service envelopes mostly cancelled 1915-1916 period, many franked with Admiral issues (1c green + 1c War Tax; or 2c carmine), various FPOs, handstamps, censor markings, etc. plus various unused postcards. Also includes rare Nov. 13, 1914 Army Post Office cover from the Convalescent Horse Depot, a very interesting lot for the WWI collector, with over 50 items, Fine or better **Est. 250.00+**
- 350 ☒ **Dominion Elections Act Statement of Poll** Registered pre-printed envelope (Form 95-10-20-100M), selection of 19 covers, mostly franked with single Admiral 10c plum and 3c brown (also different Admiral frankings making the 13c rate) postmarked from various Nova Scotia towns dated (DEC 1921). A few small flaws, but an unusual and scarce lot with potential, F-VF or better **Est. 250.00+**



- 351 ☒ **Admiral Issue Unusual Frankings** Four First flight covers; Oskelaneo to Chibougamau with #126a and 128a pairs, and E1, Due handstamp "38" marking with J3 (2) and J5 (3) on reverse of cover; Moose Jaw to Medicine Hat with single MR2B 5c War Tax; Moncton to Montreal with #126a & 128a blocks of four, and #135; and Medicine Hat to Calgary with single MR2C 20c War Tax and C1, VF lot **Est. 250.00+**



- 352** ☒ **Admiral Issue Rates and Frankings** Collection of 61 covers, showing various frankings, rates, some illustrated covers, first flights, cancellations, destinations, etc., mostly described on "exhibit" pages. Mainly Fine to Very Fine. Well worth a look. (Not Illustrated) **Est. 500.00+**



X353



X355



X354



- 353** ☒ **Admiral Issue Postal History** Collection of 95 covers, mostly showing 2c rates but noted a nice range of illustrated covers, window envelopes, scarcer small town split rings; a 1922 2c Inland Revenue (Van Dam FCH1a) on embossed cheque with additional 1c green Admiral block of four on reverse, also similar 1923 cheque with 1c yellow block of four on reverse; 20c olive green with Ottawa Style 3 inverted precancel on small Militia medal envelope addressed to Bermuda, with awarded ribbons for the medal, small cover faults, otherwise interesting. A great lot for the Admiral issue specialist, Fine to Very Fine **Est. 300.00+**

- 354** ☒ **Admiral Issue Cover Collection** Two binders over 250 covers, showing a wide range of small split ring cancellations from smaller (scarcer) towns, nice advert and illustrated covers, some in colour, some with postage due markings, ten different precancelled covers, noted Moncton 1c yellow with Style 3 on Eaton freight card, etc. Some with small flaws, but majority is Fine to Very Fine. A useful lot for the Admiral issue specialist. **Est. 750.00+**

- 355** ☒ **Admiral Coil Issues** In mounts on quadrilled pages, a comprehensive showing of coil singles, pairs, paste-ups, printings, etc. Noted mint #123-124, 125iii (VF), 126 various printings with pairs and strips, 129i (VF), 129 (F-VF NH strip of ten), part perforate (sheet form) One cent and Two cent, with #128ai pair with lathework (crease in margin), etc., plus mint #131v (NH Experimental paste-up coil pair), 132 (VF pair), 133 (VF pair and single), also 1924 Imperforate issues singles and pairs, etc., noted 3c block with pyramid guidelines (NH; light crease in margin only), Provisionals with #139 & 140 blocks of four, plus various 1c-3c booklet panes, etc. Also nice range of used coils (mostly singles), etc. Quality is mainly Fine to Very Fine throughout. A valuable lot well worth a look. **Est. 1,500.00+**

Visit us online www.easternauctions.com

or

E-Mail us at easternauctions@nb.aibn.com



- 356** ★◎ **Comprehensive Admiral Mint / Used** Collection of many dozen mint and used stamps on pages from the 1c green to the \$1 orange, emphasis on shades and cancels, also noted precancels and perfin. In many cases there are mint blocks of four, many stamps being never hinged, a few plate multiples, used plate varieties illustrated by previous owner, noted 2c carmine full Type D mint block of four, 10c blue Type D used single, 20c olive green full Type A mint single, \$1 full Type D used pair (crease), etc. A nice collection, ideal for continuation or to start a new field. Condition throughout is mainly Fine to Very Fine. **Est. 1,500.00+**
- 357** ☒ **King George V "Admiral" Issue Postal Stationery** Collection of 67 unused and different items (envelopes, cards and wrappers) and 24 different unused cut squares, all neatly displayed in mounts on pages with descriptions, clean throughout, VF *(Not Illustrated)* **Est. 150.00+**
- 358** ★☒ **Centennial Collection** Stockbook with many dozen different mint issues with range of different papers / gums / printings. Also noted a couple misperf pairs (4c and 6c black), a scarce usage of the 6c orange lithographed postal counterfeit on cover, a few covers, booklets, etc. Needs sorting, but quite useful, F-VF or better *(Not Illustrated)* **Est. 300.00+**
- 359** ◎ **Cents Issue** Two black stockpages with range of used stamps (a few are unused). Noted 1c (3; plus one plate proof single), 2c (4), 5c (22; some with identified plate varieties), 10c (5), and 17c. Includes four-ring numeral, grid and concentric ring cancels. Some flaws noted but mainly Fine *(Not Illustrated)* **Est. 350.00+**
- 360** ◎ **Large Queen Used Selection** Includes ½c (3), 1c brown red (4), 1c yellow orange, 2c (2), 3c (4), 5c (3), 6c (5), 12½c (4), 15c (8). Range of cancels and printings, condition is mixed to Very Fine. Inspec. *(Not Illustrated)* **Est. 350.00+**
- 361** ★ **Neat Small Queen Mint Selection** Group of 22 mint stamps (a few unused no gum), mostly in multiples. Includes ½c top Plate 1 + imprint strip of three, 1c horizontal pair with Montreal imprint at right, 2c strip of three with "TWO CENT" imprint at top, 2c bottom sheet margin pair with second full Ottawa imprint, 3c with "IC / R" perfin, 6c red brown pair, 8c violet black single, 10c rose lilac and magenta (both unused), 50c Widow Weed, etc. Some small flaws noted, otherwise mainly Fine *(Not Illustrated)* **Est. 250.00+**
- 362** ◎ **Neat Selection of Used Small Queens** Three stockpages with 107 stamps, including wide range of nice cancellations, noted several fancy cancels, squared circles, Crown cancels, also a #41 block of six with neat Toronto split ring 1897 cancels, #42 block of four with Quebec 1892 CDS, #45a block of four with Hamilton 1891 CDS, 20c Widow Weed (3; one with Crown cancel), 50c Widow Weed (2), etc. A few flaws noted, but a nice group and mainly Fine or better *(Illustrated on Page 102)* **Est. 250.00+**



-X362-

- 363 ★ Selection of Mint Blocks of Four** Group of 24 different stamps; includes ½c-5c and 8c Jubilee, 7c "Numeral", 1898 2c Map (2), 1908 2c Quebec, 1c green with full Type B lathework, 7c red brown (dry printing) with full Type D lathework, 1917 3c brown, 1938 13c, 20c, 50c & \$1 (aniline violet), etc. Some with gum disturbance, but noted many never hinged stamps throughout, Fine to Very Fine
(Not Illustrated) **Est. 500.00+**
- 364 ☒ Small Era Cover Lot** Group of 99 covers, mostly franked with Small Queens and with Maritimes postmark interest, many addressed to Cape Breton, Nova Scotia, noted smaller town split rings, squared circles, etc. Condition is very mixed, inspect.
(Not Illustrated) **Est. 300.00**
- 365 ★◎ Comprehensive King George V and George VI era** Mint and Used collection, housed in a stockbook with strong showing of issues from 1930 to 1951, including Officials, plate multiples, blocks of four, used, a few FDCs, perforated OHMS, etc. Noted several better valued items such as VF NH blocks of four of #174, 175, 225-227, 245, plus 198i (VF LH), several better plate blocks, a few odds and ends, etc. Well represented throughout and condition throughout is mainly Fine to Very Fine. High catalogue value and worth a look.
(Not Illustrated) **Est. 1,250.00+**
- 366 ★◎ Old-time Collection** Housed in thick red springback album with few hundreds mounted on quadrilled pages with glassine page interleaves, starting with a few early pre-1897 issues, then mint #66-72, 79-83, 93, various mint Admirals and coils with 113a, 116a, 133 VF pair (one stamp NH), 149-158, 160i, 161 pair, 162-177, used #73, 89-95, etc. Virtually COMPLETE MINT AND USED from 1932 to 1943, includes nice section of airmails, special delivery, dues and section of few dozen regular issued stamps in mint blocks of four from 1930s-1940s. Some duplication in places, but noted some varieties and overall quality is clean and Fine to Very Fine. High catalogue value. Worth a look.
(Not Illustrated) **Est. 1,250.00+**
- 367 ★◎ Old-Time Mint / Used Stock** Many dozen mint and used from 1897 Jubilee to 1928-1929 Scroll issue, well covered for the period. Includes mint sets of Leaf, Numeral, King Edward VII, Quebec, Admiral, Scroll, also wide range of used issues for the same period. Some light duplication throughout (mainly 2 to 4 of the same stamp). Condition varies from mixed to Very Fine. Needs checking.
(Not Illustrated) **Est. 1,000.00+**
- 368 ★◎ Balance of Collection** Banker's box filled with various old-time stockbooks, noted Canada comprehensive collection from 1950s to 1960s, strong back-of-book, airmail covers, semi-official airmail mint issues, revenues, etc. Also topical collection of Expo 1967 and odds & ends. Potential for better findings.
(Not Illustrated) **Est. 750.00+**
- 369 ◎ Three Cent Small Queen** Consignment as received consisting of 1900 stamps in bundles and six glassine envelopes, each with 100 to 300 stamps, ideal for further study. Also blue stockbook with many dozen modern used stamps, multiples, etc.
(Not Illustrated) **Est. 500.00+**
- 370 LITERATURE** Four titles: The Postage Stamps and Postal History of Canada by Boggs, Second Quartermaster printing; The History of the Post Office in British North America 1630-1870, by William Smith, 1973; The Encyclopaedia of British Empire Postage Stamps, Volume V, by Robson Lowe (brand new with dust jacket), Holmes' Specialized Canada & BNA, 11th Edition, VF and useful lot
(Not Illustrated) **Est. 100.00**

END OF AUCTION – THANK YOU

British North America Specialists

Always looking for the unusual...



1857 Three pence green Heraldic on thick porous wove paper with mesh, an outstanding mint block of eight. Certainly among the greatest and most important multiples of the Newfoundland Pence Era.

THE LARGEST EXISTING MULTIPLE OF THE 1857 THREE PENCE ISSUE; the second largest being only a block of four!

(Scott 3) 2008 Greene Foundation certificate.

Recently purchased for our retail stock.

Esoteric...

Errors / Varieties...

Unlisted...

Please do not hesitate to contact us.

Gary J. Lyon (Philatelist) Ltd.

P.O. Box 450 - Bathurst - New Brunswick - E2A 3Z4 - Canada

Tel (800) 667-8267 - Fax (888) 867-8267 - Email glstamps@nbnet.nb.ca

