

**Public  
Auction**

# Eastern Auctions Ltd.



## Newfoundland The Harvey Poole Collection

Gary J. Lyon  
Licensed & Bonded Auctioneer

February  
29<sup>th</sup>, 2008

# NEWFOUNDLAND

## THE HARVEY POOLE COLLECTION

I am pleased to present another in our series of one owner collections. Specialized Newfoundland material is always in demand, and this auction offers an outstanding opportunity to acquire seldom seen items in top quality.

The Poole collection was formed in Western Canada in the 1950s and early 1960s and has lain untouched for almost a half century.

The strength of the collection is in the many proofs, essays and imperforates that it contained. Beginning with an amazing selection of pence issue sample proofs that is the largest we have ever offered, almost every issue is well represented with interesting and elusive material.

The stamps also contain many items of interest, for Mr. Poole made it his business to not only acquire mint and used singles, but mint and used blocks as well. The representation of blocks and multiples is in fact quite remarkable. An inverted Halifax airmail is another of the many highlights.

I hope you will enjoy bidding in this auction. If you have a specialized collection available for sale, be sure to contact me.

Gary Lyon

*Member: ASDA - CSDA - PTS - APS - RPSC - BNAPS - CPSofGB - PHSC*





# Eastern Auctions Ltd.

P.O. Box 250, Bathurst, New Brunswick, E2A 3Z2, Canada

Tel: 1 (506) 548-8986 • Fax: 1 (506) 546-6627

Toll Free Tel: 1 (800) 667-8267 • Fax: 1 (888) 867-8267

E-Mail: [easternauctions@nb.aibn.com](mailto:easternauctions@nb.aibn.com)

Web Site: [www.easternauctions.com](http://www.easternauctions.com)

## PUBLIC AUCTION BID SHEET

*Sale Date: February 29<sup>th</sup>, 2008*

*Please buy the following lots for me at prices not exceeding those shown. I have read the conditions of sale at the beginning of the catalogue and understand the 15% buyer's premium.*

Signature: \_\_\_\_\_

Customer #: \_\_\_\_\_

Name: \_\_\_\_\_

Address: \_\_\_\_\_ City: \_\_\_\_\_

Province/State: \_\_\_\_\_ Postal/Zip Code: \_\_\_\_\_

Country: \_\_\_\_\_

Telephone: \_\_\_\_\_ Fax: \_\_\_\_\_

E-Mail: \_\_\_\_\_

### Credit Card Payment

☐ Please charge my purchases to my credit card.



Card #: \_\_\_\_\_ Exp Date: \_\_\_\_\_

Cardholder's Name (as it appears on card): \_\_\_\_\_

Billing Address if different from address printed above:

\_\_\_\_\_

\_\_\_\_\_

\_\_\_\_\_

Signature: \_\_\_\_\_

References (First time bidders only): \_\_\_\_\_

\_\_\_\_\_

☐ Please tick this box if you are bidding in US Dollars:

*If necessary to secure a lot, you may raise my bids by:*

10% ☐ 20% ☐

☐ YES! I wish to subscribe to a full year of Catalogues and Prices Realized Reports for both Mail & Public Auctions.

Please find my ☐cheque ☐credit card number enclosed for my one-year subscription fee of CDN \$35.00 for Canadian residents, USD \$35.00 for United States residents and USD \$50.00 for overseas residents.

Bidding is conducted in the following increments:  
*(Uneven bids will be rounded downwards)*

<i>\$10 - \$50.....</i>	<i><b>\$2.00</b></i>	<i>\$325 - \$750.....</i>	<i><b>\$25.00</b></i>	<i>\$3,250 - \$7,500.....</i>	<i><b>\$250.00</b></i>
<i>\$55 - \$130.....</i>	<i><b>\$5.00</b></i>	<i>\$800 - \$1,500.....</i>	<i><b>\$50.00</b></i>	<i>\$8,000 - \$20,000.....</i>	<i><b>\$500.00</b></i>
<i>\$140 - \$300.....</i>	<i><b>\$10.00</b></i>	<i>\$1,600 - \$3,000.....</i>	<i><b>\$100.00</b></i>	<i>\$21,000 - OVER.....</i>	<i><b>\$1,000.00</b></i>

*We are not responsible for bidder errors.*

*Please check bids and print clearly. All bids in even dollars please.*

[illegible]

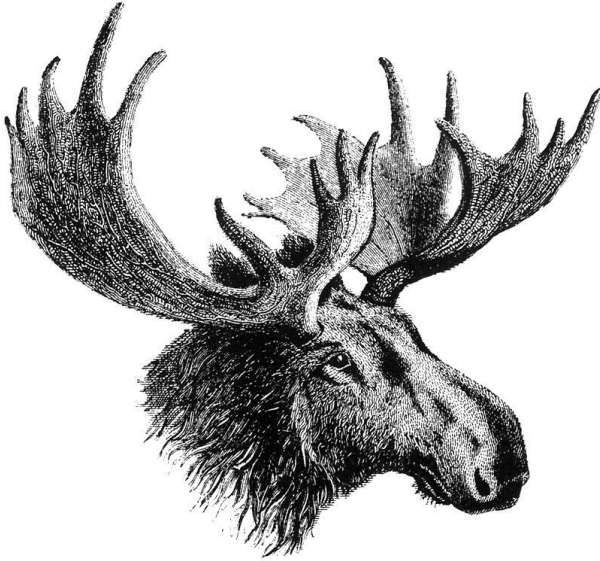
*Bid early to avoid disappointment*

*View this sale on our Web Site: [www.easternauctions.com](http://www.easternauctions.com)*

*Please bid early to avoid disappointment. You may mail, fax, e-mail or phone in your bids. Phone bids must be confirmed in writing. Mailing your bids less than two weeks prior to the sale is not recommended.*

# **Eastern Auctions Ltd.**

## **PUBLIC AUCTION**



**February 29<sup>th</sup>, 2008**  
**Halifax, Nova Scotia**

**Eastern Auctions Ltd.**

P.O. Box 250, Bathurst, New Brunswick, E2A 3Z2, Canada

Tel: 1 (506) 548-8986 • Fax: 1 (506) 546-6627

**E-mail:** [easternauctions@nb.aibn.com](mailto:easternauctions@nb.aibn.com)

**Web Site:** [www.easternauctions.com](http://www.easternauctions.com)

**Copyright © 2008 – All Rights Reserved**

## **AUCTION INFORMATION**

---

For assistance and further information  
please contact:

**SPECIALISTS IN STAMPS:**

Gary Lyon  
Yohann Tanguay

**WEB SITE:**

Luc Doucet

**CONSIGNOR SETTLEMENTS/  
ACCOUNTS RECEIVABLE:**

Pamela Ross

**MAILING LISTS AND  
SUBSCRIPTIONS:**

Billie-Jo Beaton

**CATALOGUE EDITORS:**

Luc Doucet  
Yohann Tanguay  
Sharon Willett

**SHIPPING:**

Catherine Gallagher

---

## **VENUE**

**The Lord Nelson Hotel & Suites**

**Britannia Room (3<sup>rd</sup> Floor)**

1515 South Park Street

Halifax, Nova Scotia

B3J 2L2 Canada

Tel: 1 (902) 423-6331 • Fax: 1 (902) 491-6148

Toll Free Tel: 1 (800) 565-2020

*For Room Reservations Only*

## **Viewing Sessions**

**Thursday February 28<sup>th</sup>, 2008**– 10:00am to 7:00pm

**Friday February 29<sup>th</sup>, 2008** – 10:00am to 5:00pm

**Saturday March 1<sup>st</sup>, 2008** – 9:00am to 12:00pm

## **Auction Session**

**Friday February 29<sup>th</sup>, 2008**– 7:00pm (Lot 1 – Lot 309 “The Poole Collection”)

# THE PLACING OF A BID SHALL CONSTITUTE ACCEPTANCE OF THE CONDITIONS OF SALE

## BIDDING

1. All bids are per lot, as numbered in the catalogue. Eastern Auctions Ltd. reserves the right to withdraw any lot prior to sale, to divide a lot or to group two or more.
2. The highest bidder shall prevail at one advance over the next highest bid. Should a dispute arise between bidders, the decision of the auctioneer as to the successful bidder or the re-offering or resale of the lot in dispute shall rest entirely in the judgment of the auctioneer. **On all lots sold a commission of 15% on the hammer price will be payable by the buyer.** The auctioneer shall regulate the bidding and reserves the right to refuse any bid believed by him not to be made in good faith.

## PAYMENT FOR PURCHASES

3. **U.S. funds are acceptable only at the equivalent amount shown on the invoice.** Visa and MasterCard are accepted at no extra charge if you include the information on your bid sheet.
4. Payment for lots, including those on which opinions are desired under Condition of Sale 8, shall be made as follows:

A successful mail bidder will be notified of lots purchased and must remit before the lots are sent. A person known to us, or who furnishes satisfactory references, may at our option have purchases forwarded for immediate payment. Delivery will be to the address on the bid sheet. Proof by receipt of sending at the advised address shall constitute delivery. Postage and insurance are payable by the buyer.
5. Title shall not pass to the buyer until Eastern Auctions Ltd has received full payment.
6. Buyers agree to pay for lots as specified above and no credit is extended, a late payment charge of 2% per month is added to overdue payments, minimum \$5.00.

## QUALITY AND AUTHENTICITY

7. Each lot is sold as genuine and correctly described based on individual description as modified by any specific notations in this catalogue including (but not restricted to) “Key to Cataloguing”.
  - (a) **QUALITY.** Any lot, description of which is incorrect, is returnable within forty-five days from closing date of auction. If the opinion of a mutually acceptable authority is desired, this period will be extended as noted in Condition 8. All disputed lots must be returned intact in the condition received. Photographed lots are not returnable on account of centering or perforations. Lots containing more than twenty stamps, described “as is”, or described as having faults are not returnable for any reason. Bidders who have had an opportunity to examine the lots prior to the sale may not return the lots.
  - (b) **AUTHENTICITY.** Any lot, which is declared other than genuine by a mutually acceptable authority is returnable, provided the lot is received within a period of four weeks from the date of the auction. Proof that a “mutually acceptable authority” declines to express an opinion is not normally grounds for the return of a lot.
  - (c) Returns must be made by registered mail.
  - (d) Lots marked or encapsulated by an expert committee are not returnable for any reason.
  - (e) Lots accompanied by an existing certificate are not returnable.

## EXTENSION OF TIME

8. When an opinion from a mutually acceptable authority is necessary, the buyer shall:
  - (f) Submit the lot without delay to a mutually accepted authority;
  - (g) Ensure that advice in writing to this effect be received before the auction.
  - (h) Remit in full for the lot. The buyer shall be reimbursed in full for any lot declared other than genuine.

## EXPENSES OF CERTIFICATION

9. Expenses shall be borne by the buyer except where the lot is other than as described and is returned within the conditions set forth above. Our responsibility is expressly limited to:
- (a) The actual cost of the opinion if up to \$30.00 or less, or
  - (b) The cost of the opinion up to 5% of the sale price but not exceeding a maximum of \$100.00.
  - (c) We are not responsible for expenses on the return of any lot.

## SALES TAXES

10. The Harmonized Sales Tax is payable by mail bidders residing in New Brunswick, Nova Scotia and Newfoundland liable to the tax. Other Canadian residents are liable for the GST. Foreign residents are liable for GST only on the buyer's premium.
11. This firm is a subscriber to the ASDA Code of Ethics for Auction firms.

## KEY TO CATALOGUING

### SYMBOLS & MAJOR ABBREVIATIONS

★	Mint	⊙	Used	E	Essay
✉	Cover	PB	Plate Block / Multiple	B	Block of four
BP	Booklet Pane	BK	Booklet	S	Sheet
(-)	Complete Set	(/)	Incomplete Set	F	Forgery
R	Reprint	P	Proof	PS	Press Sheet
📖	Literature	CDS	Circular Date Stamp	FDC	First Day Cover
♦	Graded Stamp				

## CONDITION

The various grading of stamps are in order; **Extremely Fine; Very Fine; Fine and Very Good.** In the case of sets, large blocks, sheets, etc., the condition quoted represents the average and quality above and below this standard can be expected.

**Mixed condition:** in large lots, a range of condition can be expected, from small faults to Very Fine.

## GUM

NH	Never Hinged – with original gum in Post Office state and unmounted.
LH	Lightly Hinged – with full original gum showing some evidence of a previous hinge.
OG	Original gum – showing some evidence of a previous hinge, a portion of which may still be present.
Part OG	Part original gum.
Unused	Unused without original gum (unless gum is mentioned), or regummed.
Ungummed	Without gum as issued.

## ESTIMATED VALUES

If an estimated cash value is given, it is shown in the description and always indicated by the abbreviation “Est.”. It is used where the lot is large or where the actual value has little relation to the catalogue price. **It represents the auctioneer's appraisal of the true CASH value of a lot and the figure is invariably close to the actual realization.** It is useless for mail bidders to list any bids that are only a low proportion of such estimates.

CATALOGUES AND HANDBOOKS USED IN LISTING

- Unitrade Specialized (2008 Edition)
- Stanley Gibbons 2008 Edition Stamp Catalogue Commonwealth & British Empire Stamps 1840 – 1952
- Winthrop S. Boggs, The Postage Stamps and Postal History of Canada, Quarterman Publications, 1974
- Robson Lowe, The Encyclopaedia of British Empire Postage Stamps Volume V North America part I to IV, 1973
- Frank W. Campbell, Canada Post Offices 1755/1895, Quarterman Publication, 1972
- Minuse and Pratt, The Essays and Proofs of British North America, Sissons Publications, 1970
- Dalwick and Harmer, Newfoundland Air Mails 1919-1939, American Air Mail Society, Revised edition 1984
- The Standard Canada Precancel Catalogue, 5<sup>th</sup> Edition, 2004
- Walsh Newfoundland Specialized Stamp Catalogue 6<sup>th</sup> Edition, 2006

BIDDING INCREMENTS

The auctioneer may regulate the bidding at his discretion. However, to assist absentee bidders in establishing their maximum bid for each lot, the increments shown below will be used in most cases. We recommend that written bids conform to these increments (those which do not will be reduced to the previous level).

BIDDING IS CONDUCTED IN THE FOLLOWING INCREMENTS:

<i>\$10 - \$50..... \$2.00</i>	<i>\$325 - \$750..... \$25.00</i>	<i>\$3,250 - \$7,500..... \$250.00</i>
<i>\$55 - \$130..... \$5.00</i>	<i>\$800 - \$1,500..... \$50.00</i>	<i>\$8,000 - \$20,000..... \$500.00</i>
<i>\$140 - \$300..... \$10.00</i>	<i>\$1,600 - \$3,000..... \$100.00</i>	<i>\$21,000 - OVER..... \$1,000.00</i>

TELEPHONE BIDS

Bids may be placed during office hours Monday to Friday from 8:00 AM to 5:00 PM Atlantic Standard Time by dialing 1 (506) 548-8986 or toll free in North America 1 (800) 667-8267. Bids may also be placed during the viewing sessions only, by calling the hotel directly at 1 (902) 423-6331 and asking for (Britannia Room). *Please note all telephone bids must be confirmed by mail, e-mail or fax.*

FAXING OR E-MAILING YOUR BIDS

You can fax or e-mail your bids before 11:00 AM A.S.T. on the closing day of the auction.  
Fax: 1 (506) 546-6627, or toll free in North America 1 (888) 867-8267.  
E-mail address: *easternauctions@nb.aibn.com*

BIDDING BY MAIL

If you wish to mail your bid sheet please allow at least two weeks for delivery. We often receive mail bids after the auction closing. These bids are unfortunately nullified. Bidders are urged to phone in their bids and then mail in their confirmation.

WEB SITE

You can view this auction on our Web Site at *www.easternauctions.com*. For your convenience, we have pictured almost every lot to facilitate your bidding. This will nicely compliment the catalogue due to constraints presented by a printed format.

## AUCTION AGENTS

*We are pleased to recommend the following agents:*

- Mr. Gerald Tucker** 23 Alderney Dr. • Dartmouth • Nova Scotia • B2Y 2N2 • Canada  
Tel: 1 (902) 423-8254 • Fax: 1 (902) 461-0744  
Toll Free Tel: 1 (800) 377-8267  
E-mail: [seaside@seasidebs.com](mailto:seaside@seasidebs.com)
- Mr. Harold B. Gordon** 614-6505 CSL Road • Montréal • Québec • H4V 1G3 • Canada  
Phone or Fax: 1 (514) 488-0445  
E-mail: [hbgordon@videotron.ca](mailto:hbgordon@videotron.ca)
- Purser Associates** 84 Webcower Road #2 • Arlington • MA • 02474-2323 • USA  
Tel: 1 (857) 928-5140 • Fax: 1 (781) 777-1023  
E-mail: [info@pursers.com](mailto:info@pursers.com) Web Site: [www.pursers.com](http://www.pursers.com)  
Visa, MasterCard & American Express welcomed.
- Mr. Charles Cwiakala** 1527 S. Fairview Avenue • Park Ridge • IL • 60068 • USA  
Phone or Fax: 1 (847) 823-8747  
E-mail: [cecwiakala@aol.com](mailto:cecwiakala@aol.com)
- Mr. Frank Mandel** P.O. Box 157 • New York • NY • 10014-0157 • USA  
Tel: 1 (212) 675-0819 - Fax: 1 (212) 366-6462
- Jean & Tony Lancaster** 20 Milner Road • Kingston • Surrey • KT1 2AU • UK  
Tel: (44) 020 8547 1220 • Fax: (44) 020 8547 3739  
E-mail: [jlaa@blueyonder.co.uk](mailto:jlaa@blueyonder.co.uk)  
Web Site: [www.philafinder.com](http://www.philafinder.com)
- Mary Weeks** 8 Old House Close • Ewell • Epsom • Surrey • KT17 1LE • UK  
Tel: (44) 020 8393 8217 • Fax: (44) 020 8393 1332  
E-mail: [mary@maryweeks.demon.co.uk](mailto:mary@maryweeks.demon.co.uk)

# Newfoundland

## Pence Trade Sample Proofs

Lots 1 - 15





## PENCE ISSUE TRADE SAMPLE PROOFS

*The following 15 lots, identification of Plate and Paper types was taken from  
"The Pence Issues of Newfoundland 1857-1866" by Robert H. Pratt.*



- 1 P **Plate 1A Paper9, 1p-1sh Black** Trade Sample Sheet (1929) on thin white diagonal mesh wove paper (0.004" to 0.005") showing all nine values with numeral denominations defaced and with scars removed on the Four-pence, XF **Est. 5,000.00+**

A STUNNING NEWFOUNDLAND PROOF SHOWPIECE OF THE HIGHEST CALIBER. VERY RARE AS AN INTACT SHEET.



2 P Plate 1 Paper6, 1p/1sh Yellow Green (1919) Trade Sample Die Proofs on the thick soft white wove paper with mesh (0.0075"), includes the 1p, 4p, 5p, 6p, 6½p, 8p and 1sh. Exceptionally rare, XF  
Est. 3,500.00+



3 P Plate 1 Paper9, 1p-1sh Purple (1929) Trade Sample Die Proofs on thin white diagonal mesh wove paper (0.004" to 0.005"), COMPLETE SET of all nine different denominations. Rarely seen and most appealing, XF Est. 3,500.00+



4 P Plate 1 Paper9, 1p-1sh Green (1929) Trade Sample Die Proofs on thin white diagonal mesh wove paper (0.004" to 0.005"), COMPLETE SET of all nine different denominations. Rarely seen and most appealing, XF Est. 3,500.00+



5 P Plate 1 Paper9, 1p/4p Red (1929) Trade Sample Proofs on thin white diagonal mesh wove paper (0.004" to 0.005"), three different denominations which includes the 1p, 4p (with the distinctive plate scars) and the 3p showing the two different dies, very scarce and attractive, XF Est. 1,000.00+



6 P Plate 1 Paper11, 1p Black (1929) Trade Sample Proof on thin white crisp wove paper with silk threads (0.00475"), very scarce, XF Est. 400.00+



7 P Plate 1A Paper9, 1p-1sh Orange (1929 - Defaced State) Trade Sample Proofs on thin white diagonal mesh wove paper (0.004" to 0.005"), COMPLETE SET of all nine different denominations. Rarely seen and most appealing, XF Est. 3,500.00+

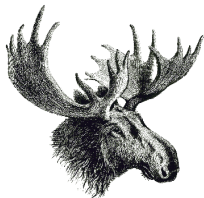


8 P Plate 1A Paper9, 1p-1sh Purple (1929 - Defaced State) Trade Sample Die Proofs on thin white diagonal mesh wove paper (0.004" to 0.005"), COMPLETE SET of all nine different denominations. Rarely seen and most appealing, XF Est. 3,500.00+



- 9 P **Plate 1A Paper9, 1sh** (1929 - Defaced State) Trade Sample Proofs on thin white diagonal mesh wove paper (0.004" to 0.005"), set of five different colours; red, black, deep blue, green and purple. Rarely seen and most attractive assembly, XF **Est. 1,500.00+**

**Take advantage of our easy and convenient ways to place your bids.**



**Call us toll free in North America  
Dial 1(800) 667-8267  
or  
Fax 1(888) 867-8267**

**For our overseas customers please use the following:  
Phone 1(506) 548-8986 - Fax 1(506) 546-6627**

**You can also visit our Website [www.easternauctions.com](http://www.easternauctions.com)  
E-Mail your bids to [easternauctions@nb.aibn.com](mailto:easternauctions@nb.aibn.com)**



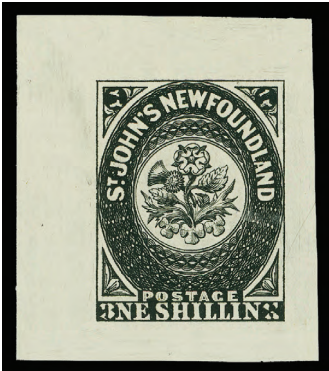
10 P Plate 1A Paper 10, 1p-1sh Blue (1929 - Defaced State) Trade Sample Die Proofs on thick yellowish wove paper (0.006" to 0.007"), COMPLETE SET of all nine different denominations. A most attractive and rarely seen set, XF Est. 3,500.00+



11 P Plate 1A Paper10, 1p-1sh Brown (1929 - Defaced State) Trade Sample Die Proofs on thick yellowish wove paper (0.006" to 0.007"), COMPLETE SET of all nine different denominations. Rarely seen and most appealing, XF Est. 3,500.00+



12 P Plate 1A Paper10, 1p-1sh Red (1929 - Defaced State) Trade Sample Die Proofs on thick yellowish wove paper (0.006" to 0.007"), COMPLETE SET of all nine different denominations. A most appealing and rarely seen set, XF Est. 3,500.00+



13 P Plate 6 Paper9, 1sh Black (1908-1909) Trade Sample Proof on thin white diagonal mesh wove paper (0.004" to 0.005"), showing the characteristic defacing marks in all four corners, very scarce, VF Est. 400.00+



- 14 P **Plate 6 Paper13, 1sh (1929)** Trade Sample Die Proofs on thick stiff white card (0.009" to 0.01"), a lovely set of five different colours; carmine red, vermilion, blue green, brown and blue, all showing the characteristic defacing marks in the four corners, beautiful and a very scarce assemblage, VF  
**Est. 1,500.00+**



- 15 P **The Herts Menus, 1sh Red (1906)** Trade Sample Die Proof, stamp size, printed on white glazed cardboard (0.01" to 0.011"), very scarce, XF  
**Est. 400.00+**

Have you been thinking of selling your collection?  
 Call us 1(800) 667-8267 ask for Gary J. Lyon.  
 Give your collection the attention it deserves.  
 Consign your stamps to Eastern Auctions Ltd.

# Newfoundland and Pence Issues

Lots 16 - 73





## PENCE



16



17

- 16 **P B** #1, 1856 1p Black Plate proof block of four on thick card, couple minute tone spots mentioned for the record, a very scarce multiple, only one sheet of 120 was printed, VF **Est. 1,250.00+**
- 17 **P** #1, 1856 1p Black A very scarce plate proof pair, printed on thick card. Only one sheet of 120 was printed, VF **Est. 600.00+**



- 18 **P** #1, 1856 1p Black Plate proof printed on thick card, very scarce, VF **Est. 300.00**



- 19 **★B** #1, 1857 1p Brown Violet A desirable mint block of four, large even margins with portion of sheet margin at left, deep rich colour, clear impression and with full original gum. A choice and seldom seen multiple, VF OG **600.00+**

To avoid disappointment be sure to mail your bid sheet early.



20 F S #2F/9F, 2p/1sh Orange Engraved Oneglia forgery se-tenant sheet of 36, composed of six different denominations; 2p, 4p, 6p, 8p, 1s and 2s, each in horizontal rows of six, printed on unwatermarked wove paper, some creases and minor flaws as often seen, F-VF, ideal for your reference collection. Est. 350.00



21 P #2i, 1856 2p Black An impressive plate proof pair on thick card showing a distinct horizontal guideline that passes through both '2s' and extends well into the margins. This guideline was only partially erased on the plate, thereby creating the line in '2s' variety that occurs in positions 7, 8 and 9 on all printings of the two pence value. Only one plate proof sheet of 20 was printed, making this a UNIQUE positional multiple, VF, a wonderful exhibition item Est. 1,000.00+



22



23

- 22    ⦿    **#2, 1857 2p Scarlet Vermilion** A rare used example, margins just touching or slightly into outer frameline as often seen on this challenging stamp, neat centrally struck grid cancellation, light thin spot, otherwise Fine appearance, 2007 Greene Foundation cert. **4,500.00**
- 23    ⦿    **#2, 1857 2p Scarlet Vermilion** A rare used example, margins slightly into outer frameline on all sides, light vertical crease, used with light grid cancellations, Fine appearance, 2007 Greene Foundation cert. **4,500.00**



- 24    ★    **#2i, 1857 2p Scarlet Vermilion** A remarkable unused example showing the distinctive horizontal line through "2" variety, clear to adequate margins all round, gorgeous fresh colour, deep and sharp impression, tiny mark and nick at right, of no significance, Fine+, 2007 Greene Foundation cert. **11,500.00**

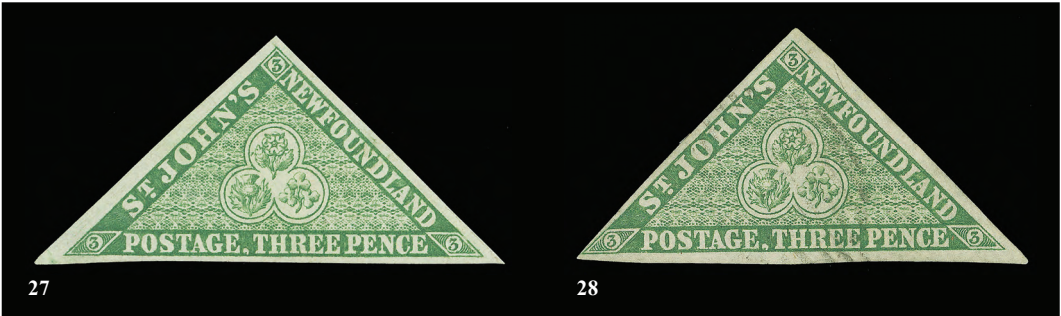
A WONDERFUL AND RARE UNUSED EXAMPLE OF THE TWO-PENCE SCARLET VERMILION HERALDIC. VERY FEW ARE KNOWN SHOWING THE LINE IN TWO'S PLATE VARIETY.



- 25    P    **#3, 1856 3p Black** Plate proof pair printed on thick card, shows the two die types, very scarce with only one sheet of 80 printed, VF **Est. 750.00**



- 26 ★ #3, 1857 3p Green A remarkable mint pair, large margins on all four sides, nice colour and possessing large part original gum. A rare multiple, as it is believed that no larger multiple exists in private hands, VF OG **1,200.00+**



- 27 ★ #3, 1857 3p Green A nice unused example with large margins and deep fresh colour, VF, 2007 Greene Foundation cert. **600.00**
- 28 ◎ #3, 1857 3p Green A beautiful used example, well clear of the design at lower left to large margins, light oval grid cancellation, F-VF, 2007 Greene Foundation cert. **500.00**



- 29 ◎ #4, 1857 4p Scarlet Vermilion A very scarce used example, adequate to full margins, minute closed tear at top, deep colour and impression, neat oval grid cancellation, F-VF, 2007 Greene Foundation cert. **4,000.00**

Call us toll free in North America  
Dial 1(800) 667-8267  
or  
Fax us 1(888) 867-8267



- 30 P #5, 1856 5p Black Plate proof pair printed on thick card. Only one sheet of 40 was printed and very few multiples are known, rare, VF **Est. 750.00+**



- 31 ★B #5, 1857 5p Brown Violet An impressive mint block of six, showing full to large margins, incredible rich colour and sharp impression, minor toning spot on top centre stamp and corner gum bend on lower right stamp, possessing full original gum with the lower three stamps being never hinged. An attractive and rare mint multiple for the specialist, VF **4,800.00**



32



33

- 32 ★ #5, 1857 5p Brown Violet Bright fresh unused example with adequate to large margins, VF **400.00**
- 33 ★ #5, 1857 5p Brown Violet An attractive mint example with huge jumbo margins, deep colour and large part original gum, tiny gum thin does not detract, VF OG **400.00**

Visit us online [www.easternauctions.com](http://www.easternauctions.com)

or

E-Mail us at [easternauctions@nb.aibn.com](mailto:easternauctions@nb.aibn.com)



34



35

- 34

⊙

#6, 1857 6p Scarlet Vermilion An attractive used example with clear to small margins, deep colour and sharp impression, light grid cancellation, F-VF, 2007 Greene Foundation cert.

4,000.00
- 35

⊙

#6, 1857 6p Scarlet Vermilion Used example, just touching design in two places to small margins, deep rich colour and sharp impression, light grid cancellation and showing portion of a red transit cancellation at lower left, a very scarce stamp, Fine, 2007 Greene Foundation cert.

3,500.00



- 36

★

#7, 1857 6½p Scarlet Vermilion An attractive unused example with ample to full margins, nice colour and sharp impression, tiny surface spot at centre top, negligible, VF, 2007 Greene Foundation cert.

6,000.00



37



38

- 37

★

#7, 1857 6½p Scarlet Vermilion Bright unused example with clear margins on all sides, couple minute tone spots on back, negligible for this scarce stamp, Fine, 2007 Greene Foundation cert.

3,000.00
- 38

⊙

#7, 1857 6½p Scarlet Vermilion Bright fresh used example, slightly touching design at right to clear margins, trivial edge thins at top, very lightly cancelled, Fine appearance, 2007 Greene Foundation cert.

2,750.00



39



40



41

- 39 ★ **#8, 1857 8p Scarlet Vermilion** Mint example with full margins and nice colour, partially disturbed original gum, VF, 2007 Greene Foundation cert. **500.00**
- 40 ★ **#8, 1857 8p Scarlet Vermilion** Unused with bright colour and large margins, VF **500.00**
- 41 ★ **#8, 1857 8p Scarlet Vermilion** Fresh unused example with full margins and deep colour, VF **500.00**



- 42 ◎ **#9, 1857 1sh Scarlet Vermilion** A very scarce used example, slightly into design on the sides and just clear of the design at top and at foot, as often seen on this stamp. Deep rich colour and sharp impression, neat and centrally struck oval grid cancellation, Fine, 2007 Greene Foundation cert. **5,000.00**



43



44



45

- 43 ★ **#11, 1860 2p Orange** A nice mint example, just into outer frameline at one point to huge margins on other three sides, deep colour and impression, possessing large part original gum, Fine+ OG **600.00**
- 44 ★ **#11, 1860 2p Orange** A beautiful unused example with small even margins, deep rich colour and unusually sharp impression, signed A. Diena, VF **500.00**
- 45 ◎ **#11, 1860 2p Orange** A handsome used example with clear to full margins, unusually deep colour, light oval grid cancellation, small blue ink spot on back, scarce and attractive, F-VF **475.00**



- 46 ★B #11A, 1860 3p Green Post office fresh mint rectangular block of four, deep colour and impression, very large margins probably from a sheet corner position, full original gum with one stamp being never hinged, XF LH 500.00



- 47 ★B #11A, 1860 3p Green A beautiful triangular-shaped mint block of four, clear to huge margins, deep rich colour and impression, small scissor cut entirely in the margin at right (could be trimmed away), full original gum, VF LH 400.00



- 48 ★B #11A, 1860 3p Green Lovely fresh mint rectangular block of four with sheet margin, clear to large margins and possessing full original gum, VF LH 400.00



- 49 ◎ #11A, 1860 3p Green An attractive used example with large margins, nice colour and light oval grid cancellation, VF 120.00+



50



51

- 50 ★ **#12, 1860 4p Orange** An attractive mint example, clear at lower right to full margins, unusually deep rich colour, part original gum with some disturbance from paper adhesions, a rare mint stamp, F-VF OG, 2007 Greene Foundation cert. **6,000.00**
- 51 ◎ **#12, 1860 4p Orange** A pleasing used example with well clear to enormous margins, bright fresh colour, oval grid cancellation. A nice stamp, F-VF, 2007 Greene Foundation cert. **1,175.00**

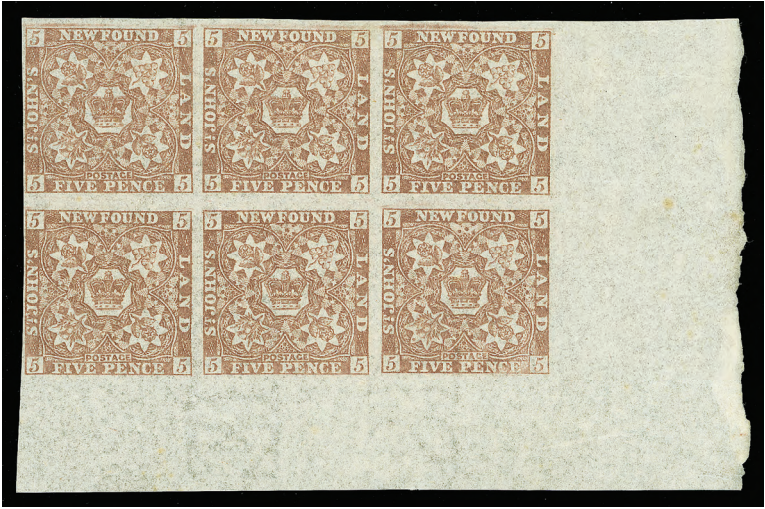


- 52 ◎ **#12i, 1860 4p Orange** An impressive horizontal used pair, barely touching design at upper right to large margins, bright fresh colour and light grid cancellations, faint horizontal crease visible in fluid only and faint offset of printing from a document on reverse. Right hand stamp shows small portion of the papermaker's watermark at foot, F-VF **Est. 5,000.00**

AN EXCEEDINGLY RARE USED MULTIPLE OF THE FOUR-PENCE ORANGE.  
UNRECORDED IN PRATT PENCE ISSUES OF NEWFOUNDLAND HANDBOOK, AND TO  
THE BEST OF OUR KNOWLEDGE UNIQUE. A GREAT SHOWPIECE.



- 53 ★B **#12A, 1860 5p Violet Brown** Fresh and crisp mint block of four, portion of sheet margin at foot, lovely colour and with full original gum, minor gum bend on top pair, VF LH **400.00**



- 54    ★B    #12Ai, 1860 5p Violet Brown Mint lower right corner block of six, lovely fresh colour and showing the papermaker's watermark "STACE / 18" affecting five stamps (one of which is NH), an attractive multiple, VF OG 1,300.00



- 55    ★    #13, 1860 6p Orange An attractive unused (regummed) example with balanced small margins, unusually sharp impression for the issue and deep colour. A rare unused stamp, VF, 2007 Greene Foundation cert. 5,000.00



56



57

- 56    ◎    #13, 1860 6p Orange An attractive and large margined used example with light unobtrusive oval grid cancellation, faint horizontal pressed out crease, otherwise VF 1,200.00
- 57    ◎    #13, 1860 6p Orange Used example, just clear at lower right to full margins, slight thins, nice fresh colour and light grid cancelled, Fine appearance, 2007 Greene Foundation cert. 800.00



- 58    ☉    **#15, 1860 1sh Orange** A rare used example, just touching design at lower right to large margins, small thin, used with unobtrusive oval grid cancellation, Fine appearance **5,000.00**
- 59    ★    **#15A-23, 1861-1862 1p-1sh Pence Issue** Mint set of eight different; 1p and 2p (faults) are unused, others mint with original gum, VF *(Not Illustrated)* **820.00**



- 60    ★S    **#18, 1861-1862 4p Rose** Complete mint sheet of twenty with full sheet margins, unwatermarked, stamps have full original gum, never hinged, light hinge marks in sheet margins only, gum bend on two stamps, negligible for this scarce intact sheet, VF NH **2,000.00+**

We Accept the following Credit Cards





X61



62

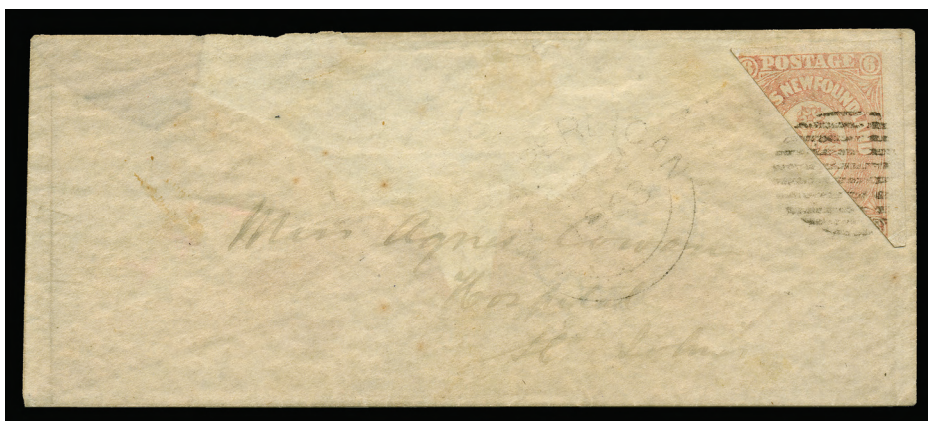
- 61    ★B    #18ii, 20ii, 23i, 1861-1862 4p, 6p and 1sh Rose Three different mint blocks of four all showing a portion of the papermaker's watermark: 4p and 6p on two stamps each. 1sh on all four stamps with two NH, VF LH, a nice group **890.00**
- 62    ★B    #19a, 1861-1862 5p Orange Brown Lovely fresh mint block of four, portion of sheet margin at top and full to large margins on other sides, full original gum, VF OG **400.00**



- 63    ★S    #20, 1861-1862 6p Rose Complete mint sheet of twenty, fresh and with full sheet margins, unwatermarked, full original gum, hinged in selvage and on one stamp only (Position 18), leaving all others never hinged, scarce, VF **1,170.00+**



- 64 ★S #20, 20ii, 1861-1862 6p Rose Complete mint sheet of twenty, folded vertically in margin between third and fourth columns, corner crease on lower right stamp. Shows papermaker's watermark "STA" letters on two stamps. Hinged in selvage only leaving all stamps NH. A scarce intact sheet, VF  
1,280.00+



- 65 ☒ #20a, 1863 (April 12) Small lady's envelope mailed from New Perlican to Miss Agnes Cowan in St. John's, top backflap missing, bearing an attractive right-hand diagonal bisect of the six pence rose, two large margins on both sides and neatly tied by small oval grid cancellation, light New Perlican double arc dispatch datestamp alongside, portion of St. John's receiver backstamp, showing "1863" year date inverted indicia error, VF  
Est. 10,000.00

Provenance: Pack, Goody

A VERY RARE BISECT COVER, ACCORDING TO ROBERT PRATT NEWFOUNDLAND PENCE ISSUES HANDBOOK, ONLY THREE SUCH COVERS ARE RECORDED, THIS ONE OFFERED HERE BEING THE EARLIEST DATED COVER. A MARVELOUS SHOWPIECE.



- 66 ★S #21, 1861-1862 6½p Rose Complete mint sheet of twenty, deep rich colour, folded horizontally entirely in the margin between second and third rows, unwatermarked, full original gum, with eight stamps being never hinged. A very scarce and desirable sheet, VF 2,800.00+



67



68

- 67 ★B #21, 21i, 1861-1862 6½p Rose Mint upper left sheet corner block of four, fresh and large margined, shows papermaker's watermark "WISE" on right pair, bottom pair NH, VF LH 750.00
- 68 ★B #21i, 1861-1862 6½p Rose, Watermarked Fresh mint block of four, large margins except at top right, shows papermaker's "CEY W / 1858" on all four stamps, F-VF LH 540.00



- 69 ★B #22, 22i, 1861-1862 8p Rose, Watermarked Lovely fresh mint block of four, large margins and showing papermaker's watermark "WISE" on left pair, full original gum, very lightly hinged, VF and choice **500.00**



- 70 ★B #22, 22i, 1861-1862 8p Rose, Watermarked Mint lower left sheet corner block of four, folded vertically in sheet margin and horizontally between but clear from stamps, showing papermaker's watermark "STA" on right pair, full original gum, very lightly hinged, VF **500.00**

Have you been thinking of selling your collection?  
 Call us 1(800) 667-8267 ask for Gary J. Lyon.  
 Give your collection the attention it deserves.  
 Consign your stamps to Eastern Auctions Ltd.



71    ★S    #23, 1861-1862 1sh Rose Complete mint sheet of twenty, lovely fresh colour, horizontal fold entirely in sheet margin at top, full original gum, hinged in selvedge and on one stamp leaving all others NH. A scarce sheet, VF 1,950.00+

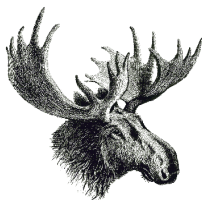


72    ★S    #23, 23i, 1861-1862 1sh Deep Rose Complete mint sheet of twenty, deep rich colour, showing large portion of papermaker's watermark "CEY WISE / 1858" on six stamps, full original gum, lightly hinged in the selvedge and on two stamps leaving all others NH. A scarce and desirable sheet for the specialist, VF 2,175.00+



- 73 ★S #23, 23i, 1861-1862 1sh Rose Complete mint sheet of twenty, fresh, light fold (negligible) between third and fourth columns, shows papermaker's watermark "ST" on two stamps, lightly hinged in the selvage and on two stamps leaving all others never hinged. A scarce intact sheet, VF **1,975.00**

**Take advantage of our easy and convenient ways to place your bids.**



**Call us toll free in North America**

**Dial 1(800) 667-8267**

**or**

**Fax 1(888) 867-8267**

**For our overseas customers please use the following:**

**Phone 1(506) 548-8986 - Fax 1(506) 546-6627**

**You can also visit our Website [www.easternauctions.com](http://www.easternauctions.com)**

**E-Mail your bids to [easternauctions@nb.aibn.com](mailto:easternauctions@nb.aibn.com)**

# Newfoundland Cents Issues

Lots 74 - 124





CENTS



74 P #24-30, 2c-13c Cents Trial Sample Proofs Complete set of the five different denominations, each showing a shade of rose, printed on wove paper. A nice and appealing set, VF **Est. 750.00**



75 P #24-30, 2c-13c Cents Issue Plate Proofs Plate proof set of five singles on india paper; 5c is mounted on card, and also includes 13c trial colour in dark red violet, VF **Est. 400.00**



76 P B #24/31, 2c/24c Cents Issues Selection of nine different plate (including trial colours) proofs, all in blocks of four (except the 12c is a block of eight) on india paper, some faults throughout due to fragile nature of the india paper, but noted some sound examples, VF appearance **Est. 500.00+**



77 P #24, 2c Codfish Nice selection of five Trade Sample Proofs, printed on wove paper, various colours, one with tiny thin, others in choice condition, VF **Est. 750.00+**



78



79



80

- 78 P #24, 2c Black Codfish Perforated Trade Sample Proof on blue chemical paper, with shiny gum, two pen strokes, well centered and very scarce, VF **Est. 250.00+**
- 79 P #24, 2c Dark Blue Codfish Perforated Trade Sample Proof on white bond paper, with yellow crinkly gum, well centered and most appealing, very scarce, VF **Est. 250.00+**
- 80 P #24, 2c Pale Green Codfish Perforated Trade Sample Proof on wove paper, colour noticeably different than the issued, with yellow crinkly gum, well centered and most attractive, very scarce, VF **Est. 250.00+**



- 81 ★B #24, 1870 2c Green Codfish on Stout White Wove Paper A remarkable lower right sheet corner mint block of four, nicely centered and showing deep rich colour and impression, tiny repaired corner at upper left, hardly noticeable, full original gum with three stamps being NEVER HINGED. A most appealing positional multiple, rare this nice, VF **1,000.00+**



- 82 ★B #24, 1870 2c Green Codfish on Stout White Wove Paper A gorgeous fresh mint block of four with sharp impression on bright fresh paper, possessing full original gum, small hinge remnants. A scarce multiple, Fine+ OG **Est. 250.00+**



- 83 P #25, 5c Harp Seal Two trade sample proofs on wove paper in dull shades of dark and deep red, fresh and Very Fine **Est. 400.00**



84



85

- 84 P #25, 5c Black Harp Seal Perforated Trade Sample Proof on blue chemical paper, with shiny gum, small thin, three pen strokes, well centered and very scarce, VF **Est. 250.00+**

- 85 P #25, 5c Black Harp Seal Trade Sample Proof on white bond paper, perforated and with shiny white gum, two blue pen marks, minor gum soak along some perfs at UR, otherwise a very scarce proof, F-VF **Est. 200.00**



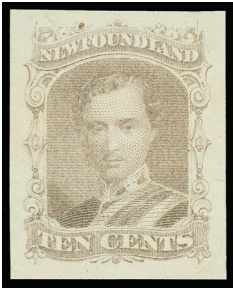
- 86 P B #25TCi, 25TCii, 25TCiv, 5c Harp Seal Three different trial colour plate proof blocks of four in orange red, dark bluish green and black. All three with usual india paper flaws including black proof block with small hole on upper right stamp, rarely encountered especially in blocks, VF appearance **1,920.00**



- 87 ★ #25, 1865 5c Brown on Thin Wove Paper A nice mint example, reasonably well centered for this difficult stamp, nice colour and possessing large part original gum, F-VF OG **525.00**



- 88 P #27, 10c Black Prince Albert Lower left corner margin plate proof block of twelve showing plate  
PB imprints at upper left and at foot, on card mounted india paper, VF Est. 750.00+



- 89 P #27, 10c Prince Albert Nice selection of five Trade Sample Proofs, printed on wove paper, various  
colours, three with small thin, other two in choice condition, VF Est. 500.00



90



91



92

- 90 P #27, 10c Black Prince Albert Perforated Trade Sample Proof on thick white bond paper, gummed  
and with light pen cancel, well centered, very scarce, VF Est. 250.00+
- 91 P #27, 10c Yellow Green Prince Albert Perforated Trade Sample Proof on thick wove paper, with  
shiny gum, well centered, a desirable and very scarce proof for the specialist, VF Est. 250.00+
- 92 P #27, 10c Olive Brown Prince Albert Perforated Trade Sample Proof on wove paper, shiny gum,  
sheet margin at left. A very scarce and eye-appealing proof, VF Est. 250.00+

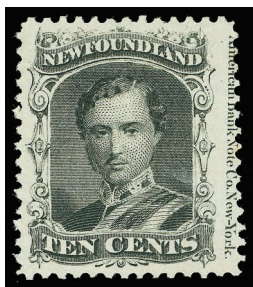


93



94

- 93 ★B #27, 1871 10c Black Prince Albert on Stout White Wove Paper Mint block of four with large part original gum, trivial perf toning and minor corner gum bend at lower left, a scarce mint multiple, F-VF OG **1,120.00**
- 94 ★B #27, 1871 10c Black Prince Albert on Stout White Wove Paper A scarce mint block of four, sheet margin at foot, typical centering for the issue, natural gum inclusion on upper right stamp, small adherence spot on lower pair which is otherwise never hinged, Fine+ LH **960.00**



95



X96

- 95 ★ #27, 1871 10c Black Prince Albert on Stout White Wove Paper A stunning mint example, unusually well centered and showing full imprint in the oversized margin at right, nice fresh colour and with large part original gum, tiny ink mark on back, a great stamp with terrific eye-appeal, VF+ OG **Est. 500.00+**
- 96 ◎ #27, 47, 51, Three Unusual Cents Issue Varieties Includes Ten-cent Prince Albert with strong and interesting short entry plate variety at top; Two-cent green Codfish with extra vertical line of perforations at right and Three-cent brown Victoria, misperforated single showing small portion of imprint in top oversize margin (small thin). All three are used, a neat trio for the specialist **Est. 200.00+**

Call us toll free in North America  
Dial 1(800) 667-8267  
or  
Fax us 1(888) 867-8267



-X97-



X98

- 97 P #28, 12c Queen Victoria An attractive and seldom seen selection of fourteen Trade Sample Proofs, printed on wove paper, various shades (ranging from light to dark), most with usual thin or flaws, otherwise VF appearance **Est. 1,250.00**
- 98 P #28, 12c Queen Victoria Selection of three different plate proof singles; red brown on india paper, orange yellow on india paper and red brown on india paper with horizontal "PROOF" overprint in blue (unlisted), VF **Est. 250.00**



- 99 ★ #29, 1894 12c Brown on Medium Wove Paper A choice and nicely centered upper right sheet corner block of six (Position 8-10 / 18-20), showing full imprint above upper left stamp, with full original gum, four stamps are NH. A seldom seen plate multiple in nice quality, VF LH **1,120.00**



-X100-



101

- 100 P #30, 13c Ship An attractive and seldom seen selection of eleven Trade Sample Proofs, printed on wove paper, various shades (ranging from light to dark), several with usual thins or flaws, otherwise VF appearance **Est. 1,000.00**
- 101 P #30, 13c Dark Yellow Green Ship Perforated Trade Sample Proof on wove paper, gummed, very scarce, F-VF **Est. 250.00+**



- 102 P #31, 24c Blue Queen Victoria Lower right plate positional proof block of twelve, showing plate imprint at upper right and at foot, on card mounted india paper, some slight card thins in no way detract, VF **Est. 600.00**
- 103 P B #31, 24c Blue Queen Victoria Plate proof block of four on card mounted india paper, VF  
(Not Illustrated) **260.00**



- 104 P #32P/32TCix, 1c Prince of Wales (First Engraving) A nice selection of plate proofs and trial colour proofs on india paper, which includes violet (three different shades), dark red brown, red bluish green, blue, yellow orange and black (tiny water stain spot at top), VF group **Est. 750.00+**



- 105 P #32TCii/32TCx, 1c Prince of Wales (First Engraving) Nice lot of four different trial colour plate proof pairs on india paper; blue green, chestnut brown, vermillion and deep blue (latter is on thin transparent gummed wove paper with minor thin spot). A very scarce assembly, VF **Est. 750.00**



- 106 P B #32TC, 1c Dark Red Brown Prince of Wales (First Engraving) Trial colour plate proof block of nine, sheet margin at foot, on card mounted india paper. A beautiful and scare multiple, VF  
Est. 500.00



- 107 P #32TCx + var., 1c Deep Blue Prince of Wales (First Engraving) Trial colour plate proof on the distinctive thin transparent wove paper, perf 12, ungummed. An unusual proof unlisted in Minuse & Pratt, F-VF  
Est. 200.00+



108



109

- 108 P #32TCxi, 1c Orange Red Prince of Wales (First Engraving) Trial colour plate proof on thin wove paper, perf 12, gummed and with quadrilled gum on face. Much scarcer than the catalogue indicates, VF OG  
Est. 250.00+
- 109 P #32TCxv, 1c Dull Dark Violet Prince of Wales (First Engraving) Trial colour plate proof on thin wove paper, perf 12, gummed and with quadrilled gum on face, well centered and much scarcer than the catalogue indicates, VF OG  
Est. 250.00+



- 110 ★B #32, 1868 1c Violet Prince of Wales First Engraving A superior mint block of four, unusually well centered for the issue, gorgeous fresh colour and possessing large part original gum, blocks of this stamp are very scarce, VF OG **800.00**



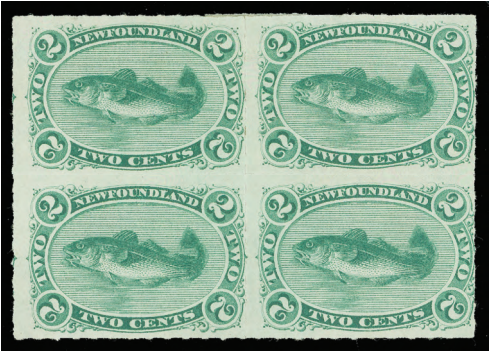
- 111 P #32ATC/32ATCvi, 1c Prince of Wales (Re-engraved) Selection of five different trial colour plate proof singles on india paper; dark red brown, yellow brown, orange, dusky green and dark violet, VF **Est. 300.00**



- 112 P #33P/33TCiii, 3c Queen Victoria Selection of four different plate proof singles on india paper; vermilion, then trial colours in olive brown, blue green and dark slate violet, VF **Est. 300.00**



- 113 ★ #37-40, 1876-1879 1c-5c Cents Issue, Rouletted Set of four, 1c and 2c are very well centered, 2c with large part original gum, other three values with disturbed gum or unused, F-VF **900.00**



- 114 ★B #38, 1879 2c Green Codfish, Rouletted A rare and attractive mint block of four, bright fresh colour and possessing full original gum, tiny black spot on gum on upper left stamp, hinge remnants at top, bottom pair very lightly hinged. Fine OG, a rare block **600.00+**



- 115 ★B #40, 5c Blue, Rouletted Mint block of four with lovely fresh colour and impression, hinge remnants, a scarce multiple, catalogue valuation for singles only, Fine OG **600.00**



- 116 ★ PB #42, 1c Grey Brown Prince of Wales Bottom plate imprint block of eight, reasonably centered, a rare plate multiple, part OG, F-VF **Est. 500.00**



- 117 ★B #49, 3c Blue Queen Victoria A post office fresh and unusually well centered mint block of four possessing full unblemished original gum, never hinged. A very seldom seen multiple in such choice quality, VF NH **900.00+**



- 118 ★B #55, 1894 5c Bright Blue A gorgeous fresh colour mint block of four with full original gum, never hinged, almost Very Fine centering **440.00**



- 119 P #56TCii, 1/2c Newfoundland Dog Trial colour plate proof single printed in dark brown on wove paper, showing sheet margin at left, rare and missing from most advanced proof collections, VF

**Est. 500.00+**



- 120 P #56TCv, 1/2c Newfoundland Dog A desirable trial colour plate proof pair printed in blue on wove paper, lovely and fresh with full margins, small fault at right, VF **Est. 750.00+**



- 121 ★ **#56, 1888 ½c Rose Red Newfoundland Dog** A beautiful bottom plate imprint block of eight, the lower four stamps are remarkably well centered with large margins, gorgeous fresh colour and full original gum, attractive, VF NH **Est. 300.00+**  
PB



- 122 ★ **#57, 1896 ½c Orange Red Newfoundland Dog** Mint bottom plate imprint strip of four, nice colour, tiny perf thin in upper left corner, scarce, Fine OG **Est. 400.00**  
PB



- 123 ★ **#57, 1896 ½c Orange Red Newfoundland Dog** A selected mint block of four, centered within large margins, true rich colour and possessing full original gum, choice, VF LH **400.00**



- 124 ★B #59, 59i, 1894 10c Black Schooner Reasonably centered mint block of four, showing the double line through "CE" of "CENTS", full immaculate original gum, very light hinge mark on lower right stamp leaving the other three stamps never hinged, F-VF **1,175.00**

**Take advantage of our easy and  
convenient ways to place your bids.**

**Call us toll free in North America**

**Dial 1(800) 667-8267**

**or**

**Fax 1(888) 867-8267**



**For our overseas customers please use the following:  
Phone 1(506) 548-8986 - Fax 1(506) 546-6627**

**You can also visit our Website**

**[www.easternauctions.com](http://www.easternauctions.com)**

**E-Mail your bids to**

**[easternauctions@nb.aibn.com](mailto:easternauctions@nb.aibn.com)**

# Newfoundland

## 1897 - 1947 Issues



Lots 125 - 250



1897 DISCOVERY OF NEWFOUNDLAND

- 125 P #61/74, 1897 1c/60c Discovery of Newfoundland Set of thirteen different plate proof singles on a thicker india paper (missing the 4c only), cut close margins, acquired pre-1990 ABNC Archive sale, Fine (Not Illustrated) Est. 300.00



- 126 ★B #61-74, 1897 1c-60c Discovery of Newfoundland A gorgeous fresh and selected mint set of fourteen, all with nice colours, two stamps in each block never hinged (ex 35c). Hard to find in such choice condition, VF 1,930.00



- 127 ★B #61-74, 1897 1c-60c Discovery of Newfoundland An attractive and complete mint set of fourteen blocks of four, fresh colours and nicely centered, some never hinged stamps throughout, catalogued as hinged only, VF 1,500.00



- 128 ⊙B #71-74, 1897 24c, 30c, 35c & 60c Cabot Issue Cancelled-to-order by St. John's (NOV 26 1920) in red; 24c, 30c and 35c are blocks of four and single for the 60c. F-VF, seldom seen Est. 250.00+

1897 SURCHARGES



129



134

- 129 ★B #75, 77, 1897 (October) 1c on 3c Grey Lilac Provisional Surchage, lower right positional sheet corner block of four, still retaining its lower portion of sheet margin, scarce thus, and showing both Type C surcharge (only two Type C surcharge, Position 49 and 50, are found in the setting of 50) and two Type A surcharge on top pair, diagonal crease on left pair, much original gum, partially disturbed as often, otherwise Fine and a rare multiple for the specialist **1,600.00**



130



131



132



133

- 130 ◎ #76, 1897 (October) 1c on 3c Grey Lilac, Surchage Type B An impressive used example, exceptionally well centered within large margins, deep rich colour and light grid cancelled. A superb stamp, rarely seen in such top-quality, worthy of the finest collection, XF GEM **250.00+**
- 131 ★ #76i, 1897 (October) 1c on 3c Grey Lilac, Surchage Type B Unused example showing the 2mm spacing between "ONE" and "CENT" (Position 41), relatively well centered, scarce, F-VF **500.00**
- 132 ◎ #77, 1897 (October) 1c on 3c Grey Lilac Surchage Type C Nicely centered used example, very light unobtrusive cancel, VF, 2007 Greene Foundation cert. **900.00**
- 133 ◎ #77, 1897 (October) 1c on 3c Grey Lilac Surchage Type C Reasonably centered used example with light creases and light smudge cancellation, F-VF, 2007 Greene Foundation cert. **725.00**
- 134 ★B #77a, 1897 (October) 1c on 3c Grey Lilac An attractive positional surcharge block of four (Position 38-39 / 48-49), the only position block that shows all three major Surchage Types, relatively well centered for the issue, full original gum, hinge strengthened at centre and some gum thins on upper right stamp (Type A), a very scarce positional block, F-VF OG **Est. 1,000.00+**



1897 -1901 ROYAL FAMILY



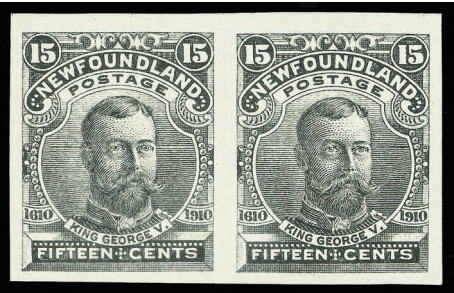
135



136

- 135 ★B #80b, 1898 1c Yellow Green Queen Victoria Unused block of four, imperforate horizontally, typical centering for this variety, a Fine and scarce multiple **600.00**
- 136 ★ PB #83c, 1898 3c Red Orange on Thin Bluish Paper An attractive bottom plate imprint block of four, fresh with full original gum, lightly hinged on right pair only, seldom seen, F-VF **Est. 300.00+**

1910 – 1911 JOHN GUY



- 137 P #87/97, 1910 1c/15c John Guy Issue (Lithographed) Set of nine plate proof pairs (only missing the 6c value, 12c does not exist), each in colour of issue on gummed thick wove paper, full original gum, 4c, 8c and 15c hinged, other six are never hinged, an attractive and seldom seen group, VF **3,000.00**

Visit us online [www.easternauctions.com](http://www.easternauctions.com)

or

E-Mail us at [easternauctions@nb.aibn.com](mailto:easternauctions@nb.aibn.com)



- 138 ★B #87-97, 1910 1c-15c John Guy Issue (Lithographed) A valuable and scarce complete set of twelve mint blocks of four, plus some extra perf varieties of the 1c, 2c and 5c; 6c Type II with gum thin on bottom pair. Quite well centered with fresh colours with most having one or two stamps NH. Catalogued as F-VF OG **2,259.00**



X139



141

- 139 ★◎B #87, 87ix, 87xii, 87xiv, 1910 1c Green (Lithographed) Three mint blocks of four, showing the "JAMRS", "NFW" and "ONE/CENT" plate varieties, one block is never hinged, also mint and used singles with "NFW" variety. F-VF or better **Est. 250.00+**



- 140 ★ #87c, 1910 1c Deep Green (Lithographed), Perf 12x11 Well centered horizontal mint pair, imperforate between, each stamp with "HHH" handstamp on back, scarce, VF OG **500.00**
- 141 ★ #87d, 1910 1c Deep Green (Lithographed), Perf 12x11 Vertical mint pair, imperforate between, well centered and seldom seen, VF OG **450.00**



142



144



143

- 142 ★ #92Ab, 1910 6c Claret Lord Bacon, Type II (Lithographed) Imperforate mint pair with large margins and full original gum, scarce, VF NH **675.00**
- 143 ★B #93, 1910 8c Pale Brown View of Mosquito (Lithographed) Top sheet margin mint block of six (2x3), showing the "MCSQUITO" plate variety on left stamp in middle row, hinged in selvage only leaving all stamps NH. A very scarce mint multiple, F-VF **Est. 1,250.00+**
- 144 P #96a, 1910 12c Lilac King Edward VII (Lithographed) Imperforate pair mint, faint soiling between stamps, deep rich colour and full original gum, very scarce, VF NH **1,000.00**



- 145 ★B #98-103, 1911 6c-15c John Guy Issue (Engraved) A beautiful and selected mint set of six in blocks of four, nicely centered with fresh colours, full original gum, 6c to 10c have one or two stamps never hinged. Catalogued as VF OG **2,160.00**



146

- 146 ★ #98a, 1911 6c Brown Violet (Engraved) Imperforate pair, unused without gum, usual light printing offset on front, VF **400.00**



147

- 147 ★ #99a, 1911 8c Bistre Brown (Engraved) Imperforate pair with full margins, unused without gum, VF **400.00**



148



-X149-



- 148 ★ #99a + var., 1911 8c Bistre Brown (Engraved) Vertical imperforate pair, sheet margin at foot, showing a dramatic and unusual pre-printing paper fold through both stamps, unused without gum. A neat item for the specialist, VF **Est. 500.00+**

- 149 ★ #99a, 100a, 101a, 1911 8c, 9c and 10c John Guy Issue (Engraved) Three imperforate pairs, unused without gum, choice and seldom seen, VF **1,200.00**



- 150 ★ #100a, 1911 9c Olive Green (Engraved) Fresh imperforate pair, unused without gum and with full even margins, VF **400.00**



- 151 ★ #101a, 1911 10c Violet Black (Engraved) Fresh imperforate pair, unused without gum, with full even margins, VF **400.00**

1911 ROYAL FAMILY



- 152 P #104-114, 1c-15c Royal Family Issue Complete set of eleven trial colour plate proofs printed in black on thick white wove paper, some mounted on card, all with large margins. An attractive and scarce set, VF **Est. 1,500.00**



- 153 ★B #104-114, 1911 1c-15c Royal Family Issue Complete fresh mint set of twelve, all in reasonably centered blocks of four, includes both 8c (blue and peacock blue), full original gum, all have bottom pair never hinged, except for the 5c and 8c peacock blue shade. A nice set, F-VF **1,990.00**



- 154 ★ #104a, 1911 1c Yellow Green Queen Mary A nice imperforate pair, ungummed as issued, VF **400.00**
- 155 ★ #105a, 1911 2c Carmine King George V Lovely imperforate pair, ungummed as issued, VF **400.00**



156   ★B   #108a, 1911 5c Ultramarine Princess Mary Upper right sheet corner imperforate block of four, some printing ink offset on front and on back, ungummed as issued. A very scarce multiple, VF **800.00**



157

158

157   P B   #114, 15c Magenta Colony Seal Plate proof block of four in colour of issue on card mounted india paper, VF **Est. 400.00**

158   ★   #114a, 1911 15c Magenta Colony Seal Imperforate pair, ungummed as issued, VF **150.00**

1919 TRAIL OF THE CARIBOU



159   ★B   #115-126, 1919 1c-36c Trail of the Caribou Issue A nice and complete mint set of twelve blocks of four; 6c is hinged, top pair of the 12c, 24c and 36c hinged, rest NH, Fine+ **815.00**



X160



X161

- 160 ★B #115-126, 1919 1c-36c Trail of the Caribou Lovely fresh and complete mint set of twelve blocks of four, bottom pairs never hinged (except for the 6c and 12c), 24c with crease on lower right stamp, Fine+ set **745.00**
- 161 ⊙B #115-126, 1919 1c-36c Trail of the Caribou Complete set of twelve in used blocks of four, typical centering for the issue, many with CDS or split ring datestamps, minor faults on the 2c block, a difficult set to complete in used blocks, Fine+ **900.00**



- 162 ★ #115a-126a, 1919 1c-36c Trail of the Caribou Issue A fresh and desirable complete set of twelve imperforate pairs, un gummed as issued, four-cent with light paper wrinkles. A great set of this popular issue, VF **4,200.00**

Call us toll free in North America  
Dial 1(800) 667-8267  
or  
Fax us 1(888) 867-8267

1918 – 1920 SURCHARGES & ESSAYS



163



164

- 163 E 1918 2c on 60c Black King Henry VII Well centered mint single with provisional three-line surcharge essay "TWO / 2 / CENTS" handstamped in red, full original gum, never hinged and very scarce thus, VF NH **Est. 750.00**
- 164 E 1918 2c on 60c Black King Henry VII Mint single with provisional three-line surcharge essay "TWO / 2 / CENTS" doubly handstamped in red, scarce, F-VF OG **Est. 500.00**



- 165 ★ #127i, 1920 2c on 30c Slate Seal of Colony Surcharged in Red, a mint example of this rare essay, fresh colour and large part original gum, negligible gum bend mentioned for accuracy only. Only one sheet of twenty-five was printed. A key stamp missing from most advanced collections, VF OG **1,750.00**



166



167

- 166 ★B #128, 1920 3c on 15c Scarlet Surcharge Type I (bars 10½mm apart) A selected fresh and centered mint block of four, hinged on upper right stamp only, others never hinged. A scarce multiple in choice condition, VF **1,875.00**
- 167 ⊙B #128, 1920 3c on 15c Scarlet Surcharge Type I (bars 10½mm apart) A desirable used block of four, bright fresh colour and nicely centered, light Sandy Point (DE 19 22) split ring cancellations, some perf separation at top strengthened by a hinge. A rare multiple in used condition, ideal for exhibition, VF **1,200.00**



- 168 ★◎ #130, 130a, 1920 3c on 35c Red Iceberg Mint single with lower bar "omitted" (as normally seen for this variety), lightly hinged. Also similar example used with St. John's East (SP 1925) split ring cancel, creased, but with lower bar COMPLETELY OMITTED, very rare thus and to the best of our knowledge the only such used example we have seen, Fine **Est. 250.00+**



- 169 ★B #130iii, 1920 3c on 35c Red Lovely fresh mint block of four, shows most of one bar and large part of another missing on the lower pair which is never hinged, VF LH **300.00**

1923 – 1924 PICTORIAL



- 170 ★B #131-143, 1923-1924 1c-24c Pictorial Issue An attractive and complete mint set of fourteen blocks of four, reasonably centered, some with bottom pair NH including the key 9c and 24c. Catalogued as F-VF OG **705.00**

Fax in your Bid(s) toll free in North America  
Dial 1(888) 867-8267



171 ★ #131b-142a, 1923-1924 1c/15c Pictorial Issue A beautiful set of eleven different horizontal imperforate pairs, only missing the Three-cent to complete, fresh colours and with full to large margins, unused without gum, except for the Two-cent (with original gum; small scissor cut between stamps at foot). A choice set, seldom encountered, VF **2,700.00**

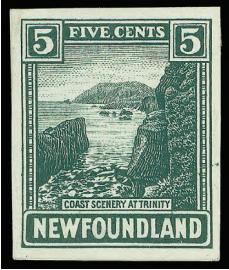


172



176

172 ★ #131b, 1923-1924 1c Grey Green Imperforate pair with large margins, unused without gum, VF **250.00**



173



174



175

- 173 P #135, 5c Dark Green Coast of Trinity Trial colour small Die Proof on wove paper mounted on card and with part gum, scarce, VF **Est. 300.00**
- 174 P #135, 5c Dark Blue Coast of Trinity Trial colour small Die Proof on wove paper, mounted on card and partially gummed, scarce, VF **Est. 300.00**
- 175 P #135, 5c Red Coast of Trinity Trial colour small Die Proof on wove paper mounted on card, part gum, slightly overlapping in left margin, still a scarce proof, VF **Est. 300.00**
- 176 P #136, 6c Dark Blue Humber River Trial colour plate proof pair on wove paper, VF **Est. 300.00**



## 1928 – 1931 PUBLICITY



178



X177



179

- 177 ★B #145-159, 1928 1c-30c Publicity Issue (First Engraving) Complete mint set of fifteen in blocks of four, reasonably centered, all have at least two stamps never hinged, F-VF **Est. 678.00**
- 178 P #146, 2c Red, Steamship Caribou (First Engraving) Progressive Small Die Proof in dark red on white diagonal mesh wove paper, clouds and boat cable are noticeably sharper and more distinctive than the issued stamp, very scarce, VF **Est. 250.00+**
- 179 P #146, 2c Red, Steamship Caribou (First Engraving) Small Die Proof on white diagonal mesh wove paper, scarce, VF **Est. 250.00**



180



181

- 180 P #147, 3c Dark Brown King George V & Queen Mary (First Engraving) Small Die Proof on thick card, large margins and scarce, VF **Est. 250.00**
- 181 P #148, 4c Prince of Wales (First Engraving) Small Progressive Trial Colour Die Proof in orange on white diagonal mesh wove paper, shows incomplete ornamentation above and at left of both "4", very scarce, VF **Est. 250.00+**



182



183

- 182 P #149, 5c Greenish Grey, Express Train (First Engraving) Small Die Proof on white wove paper, light crease but a scarce proof, VF **Est. 250.00**
- 183 P #149, 5c Slate Black, Express Train (First Engraving) Trial Colour Small Die Proof on greyish wove paper, scarce, VF **Est. 250.00**



- 184 P #150, 6c Blue, Newfoundland Hotel (First Engraving) Small Die Proof on white diagonal mesh wove paper, large margins and scarce, VF **Est. 250.00**



- 185 P #153, 10c Dark Violet, War Memorial (First Engraving) Set of Progressive Small Die Proofs (First, Second and Third State) and Small Die Proof (Final State - Issued Design), all four on white diagonal mesh wove paper, one proof (Third State) has tear at upper left corner, a rare assembly of proofs ideal for the specialist, VF **Est. 1,000.00**



- 186 P #154, 12c Dark Greyish Green, General Post Office (First Engraving) Trial Colour Small Die Proof on white wove paper, large even margins, this colour was eventually used for the 28c value, VF and rare **Est. 500.00**



- 187 P #157, 20c Greenish Slate Black, Colonial Building (First Engraving) Trial Colour Small Die Proof on white diagonal mesh wove paper, scarce, VF **Est. 250.00**



- 188 P #163/182, 1c-30c Pictorial Issue (Re-engraved) Complete set of the eleven different Die Proofs in colours of issue on watermarked wove paper, nice even margins and each showing guideline at centre top or at right of the stamp design. A superb and rare complete set, ideal for exhibition, XF  
Est. 3,500.00+



189



190

- 189 ★B #163-171, 1929-1931 1c-20c Publicity Issue Unwatermarked (Re-engraved) Lovely fresh mint set of nine in blocks of four, reasonably centered, all with bottom pair never hinged, F-VF 865.00
- 190 P #163, 1c Black Map of Newfoundland (Re-engraved) Large Trial Colour Die Proof on unwatermarked wove paper, 55 x 77mm, with small guideline at centre right of stamp design and reversed die '788' (albino print) number at upper right corner, faint paper clip mark at extreme top mentioned for the record, scarce, VF  
Est. 400.00

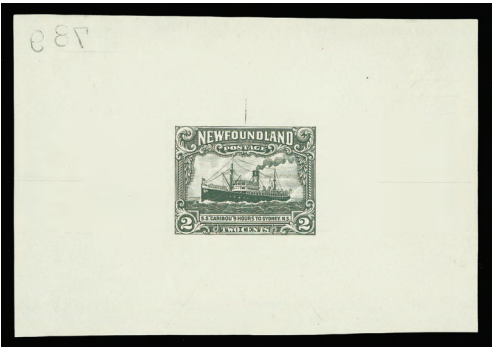


191



192

- 191 ★B #163b, 1929-1931 1c Green Map of Newfoundland Unwatermarked (Re-engraved) Mint block of four, imperforate between horizontally, hinge remnants, seldom seen, F-VF OG **450.00**
- 192 ★ #163c, 165a, 1c Green Map of Newfoundland Unwatermarked (Re-engraved) Also 3c deep red brown KGV and Queen Mary imperforate pairs, ungummed, VF **300.00**



193



194

- 193 P #164, 2c Black Steamship Caribou (Re-engraved) Large Trial Colour Die Proof on unwatermarked wove paper, 80 x 55mm, showing small vertical guideline at centre top and above stamp design, with reversed die '789' number at upper left corner, scarce, VF **Est. 400.00**
- 194 P #164, 2c Carmine Steamship Caribou (Re-engraved) Large Die Proof on unwatermarked wove paper, 85 x 60mm, showing full die sinkage, without die number, scarce, VF **Est. 400.00**



- 195 P #165, 3c Black King George V & Queen Mary (Re-engraved) Large Trial Colour Die Proof on unwatermarked wove paper, showing small vertical guideline at centre top above design, with reversed die '790' number at upper left corner, scarce, VF **Est. 400.00**





200



203

- 200 ★B #168, 6c Ultramarine Newfoundland Hotel Unwatermarked (Re-engraved) Mint block of eight showing complete perforated SPECIMEN (vertically and reading up), with full original gum, very scarce, F-VF NH **Est. 600.00+**



201



202

- 201 P #169, 10c Black War Memorial (Re-engraved) Large Trial Colour Die Proof on unwatermarked wove paper, 83 x 62mm, showing full die sinkage, vertical guideline at centre top and above design, reversed die '813' number at upper left corner, scarce, VF **Est. 400.00**
- 202 P #169, 10c Violet War Memorial (Re-engraved) Large Die Proof on unwatermarked wove paper, 82 x 60mm, showing full die sinkage, vertical guideline at centre top above stamp and without die number, scarce, VF **Est. 400.00**
- 203 P #169, 10c Dark Violet War Memorial (Re-engraved) Progressive Small Die Proof on wove paper, shading in the sky is heavier than in the issued design, tiny edge stain at lower left corner entirely in the margin, a very scarce proof, VF **Est. 250.00**

To avoid disappointment be sure to mail your bid sheet early.



204



205

- 204 P #170, 15c Dark Blue First Nonstop Transatlantic Flight (Re-engraved)** Large Die Proof on unwatermarked wove paper, 77 x 60mm, with die sinkage on two sides, without guideline and die number, corner crease at upper left well away from stamp, a very scarce proof, unlisted in Minuse & Pratt handbook, VF **Est. 400.00**

- 205 P #171, 20c Deep Black Colonial Building (Re-engraved)** Large Die Proof on unwatermarked wove paper, 70 x 52mm, showing small vertical guideline at centre top above design, scarce, VF **Est. 400.00**



- 206 ★B #172-182, 1931 1c-30c Publicity Watermarked (Re-engraved)** Lovely fresh and relatively well centered mint set of eleven in blocks of four, full original gum, bottom pairs never hinged except for the 30c (all lightly hinged) and key 20c (all NH), F-VF **1,265.00**



- 207 ★B #172-182, 1931 1c-30c Publicity Watermarked (Re-engraved)** An attractive and fresh mint set of eleven in blocks of four, F-VF OG **966.00**

1932 – 1937 RESOURCES (PERKINS BACON PRINTINGS)  
(See also lot 248)

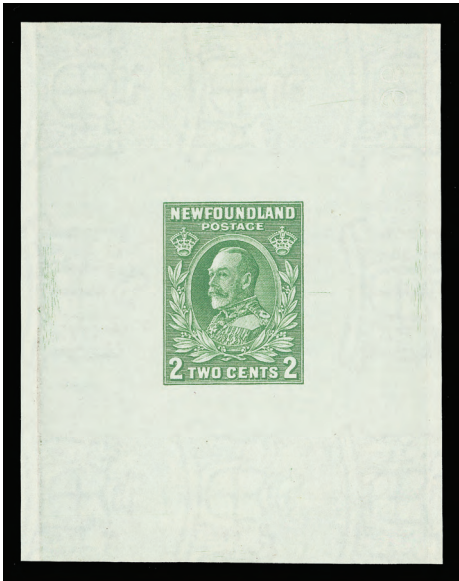


208



209

- 208 P #183, 1c Black Codfish Large Trial Colour Die Proof on watermarked wove paper, 60 x 79mm, with almost complete die sinkage, reversed die '954' (albino print) number at upper right, minor wrinkles otherwise a scarce proof, VF **Est. 300.00**
- 209 P #185, 2c Rose King George V Large Die Proof on unwatermarked wove paper, 60 x 84mm, showing full die sinkage, without die number, scarce, VF **Est. 400.00**



210



211

- 210 P #186, 2c Green King George V, Die I Large Die Proof on watermarked wove paper, 62 x 80mm, showing die sinkage at sides and reversed die '967' (albino print) number at upper right, rare and unlisted, VF **Est. 400.00**
- 211 P #187, 3c Orange Brown Queen Mary Large Die Proof on unwatermarked wove paper, 56 x 77mm, without die number, scarce, VF **Est. 400.00**



212



214

- 212 P #189, 4c Rose Lake Prince of Wales Large Die Proof on watermarked wove paper, 60 x 79mm, showing the sinkage at sides and reversed die '969' (albino print) number at upper right corner, scarce, VF **Est. 400.00**



- 213 ★ #190a, 1932-1937 5c Violet Brown, Die I A choice and fresh imperforate mint pair with large margins and full original gum, VF NH **300.00**
- 214 P #192, 6c Blue Princess Elizabeth Large Die Proof on unwatermarked wove paper, 58 x 82mm, showing the sinkage and without die number, trivial spot at left, scarce, VF **Est. 400.00**



- 215 P #193, 10c Olive Black Leaping Salmon Large Die Proof on unwatermarked wove paper, 85 x 67mm, showing full die sinkage and without die number, scarce, VF **Est. 400.00**



216 P #194, 14c Black Newfoundland Dog Large Progressive Die Proof, no fans at top corners of vignette, on unwatermarked wove paper, 83 x 57mm, showing die sinkage, rare, VF **Est. 750.00**



217 P #194, 14c Black Newfoundland Dog Large Die Proof on unwatermarked wove paper, 75 x 53mm, without die number (approval state), scarce, VF **Est. 400.00**



218 P #195, 15c Magenta Harp Seal Large Die Proof on unwatermarked wove paper, 84 x 64mm, showing full die sinkage and without die number, scarce, VF **Est. 400.00**



219 P #195, 15c Magenta Harp Seal Large Die Proof on unwatermarked wove paper, 83 x 63mm, showing vertical guideline above stamp, with full die sinkage and without die number, scarce, VF **Est. 400.00**



220 P #196, 20c Green Cape Race Large Progressive Die Proof of the surrounding frame, no vignette or "POSTAGE" at top, on unwatermarked wove paper, 82 x 62mm, with full die sinkage and pencil signature by the engraver "Wolfenden 21/5/31" at lower right. A rare and most appealing proof, ideal for exhibition, VF **Est. 750.00+**



221



222

- 221 ★ #196a, 1932-1937 20c Grey Green A choice and fresh imperforate mint pair with full even margins and full original gum, VF NH **Est. 375.00**
- 222 ★ #197a, 1932-1937 25c Grey A choice imperforate mint pair with deep colour and full pristine original gum, VF NH **Est. 375.00**



223



224

- 223 P #198, 30c Deep Blue Fishing Fleet Large Die Proof on unwatermarked wove paper, 85 x 62mm, showing full die sinkage and without die number, very scarce, VF **Est. 500.00**
- 224 P #208, 7c Black Duchess of York Large Trial Colour Die Proof on watermarked wove paper, 58 x 77mm, with die sinkage and reversed die '1029' number at upper right corner, scarce, VF **Est. 400.00**



- 225 P #208, 7c Red Brown Plate proof pair in colour of issue on bond paper, unwatermarked, VF **Est. 200.00**



226 ★ #208a, 1932 7c Red Brown Seldom seen imperforate block of four, ungummed, large margins, VF 400



227



229

227 P #209, 8c Orange Red Corner Brook Paper Mill Large Die Proof on unwatermarked wove paper, 86 x 63mm, showing full die sinkage and without die number, trivial thin spot well away from the design, a scarce proof, VF Est. 400.00



228 P #210, 24c Dark Blue Loading Iron Ore Large Progressive Die Proof of the surrounding frame, no vignette and with shading around "TWENTY FOUR CENTS", on unwatermarked wove paper, 87 x 66mm, with full die sinkage. A rare proof for exhibition, VF Est. 750.00+

229 P #210, 24c Black Loading Iron Ore Large Trial Colour Die Proof on watermarked wove paper, 79 x 59mm, reversed die '1028' number at upper left corner, scarce, VF Est. 400.00



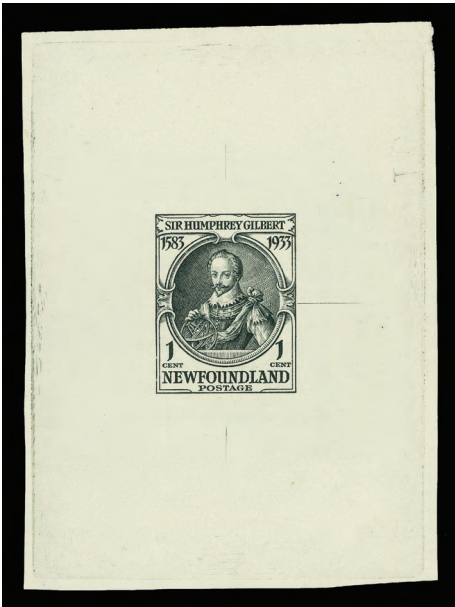
## 1933 SIR HUMPHREY GILBERT



- 230 P #212-225, 1933 1c-32c Sir Humphrey Gilbert Issue** An exceptional complete Large Die Proof set of fourteen, all in colour of issue on watermarked wove paper, each showing the reverse die number, fresh and choice condition. Very few complete sets are known, XF **Est. 5,000.00+**

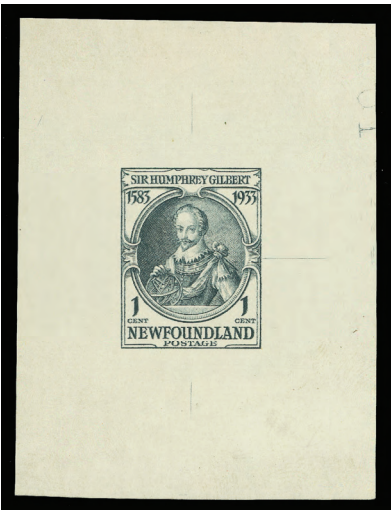


231

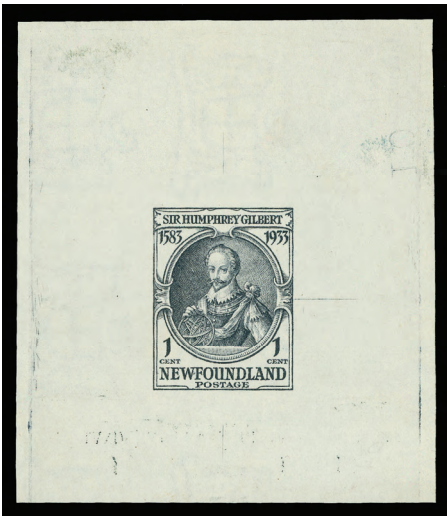


232

- 231 ★B #212-225, 1933 1c-32c Sir Humphrey Gilbert Issue Complete mint set of fourteen blocks of four, centered, original gum, hinged to lightly hinged; 20c with gum creases. Also includes Four-cent imperforate mint block of four, VF **Est. 890.00**
- 232 P #212, 1c Black Sir Humphrey Gilbert Large Trial Colour Die Proof on unwatermarked wove paper, 60 x 83mm, full die sinkage and reverse die '1096' (albino print) number at upper right corner, scarce, VF **Est. 400.00**



233



234

- 233 P #212, 1c Grey Black Sir Humphrey Gilbert Large Die Proof on unwatermarked wove paper, 52 x 70mm, showing die '1096' (albino print) number at upper right corner, scarce, VF **Est. 400.00**
- 234 P #212, 1c Grey Black Sir Humphrey Gilbert Large Die Proof on watermarked wove paper, 60 x 70mm, with reversed die '1096' (albino print) number at upper right corner, scarce, VF **Est. 400.00**



- 235 P #213, 2c Green Compton Castle Large Die Proof on unwatermarked wove paper, 62 x 50mm, with reversed die '1094' number at upper left corner, scarce, VF **Est. 400.00**



236



237

- 236 P #214, 3c Yellow Brown Gilbert Coat of Arms Large Die Proof on unwatermarked wove paper, 60 x 66mm, showing reversed die '1097' (albino print) number at upper right corner, scarce, VF **Est. 400.00**
- 237 ★B #214a, 1933 3c Yellow Brown Imperforate block of four unused, sheet margin at right and large margins on other sides, light creases as usually seen on this issue, a rare multiple, VF **600.00**



- 238 P #215, 4c Carmine Eton College Large Die Proof on unwatermarked wove paper, 74 x 57mm, showing reversed die '1095' number at upper left corner, scarce, VF **Est. 400.00**



239



243

- 239 ★B #216a, 1933 5c Dull Violet Imperforate block of four unused with sheet margin at top and large margins on other sides, light wrinkles on bottom pair as often seen. Multiples are rarely encountered, VF **700.00**



240



241

- 240 P #217, 7c Red Brown Gilbert Receiving Royal Patents Large Trial Colour Die Proof on unwatermarked wove paper, 74 x 59mm, showing die sinkage on two sides, unlisted in Minuse & Pratt handbook, rare thus, VF **Est. 750.00**
- 241 P #219, 9c Blue Fleet Arriving in St. John's Large Die Proof on unwatermarked wove paper, 70 x 49mm, showing reversed die '1098' number at upper left corner, scarce, VF **Est. 400.00**



- 242 ★ #219a, 1933 9c Ultramarine A selected mint imperforate pair with sheet margin at right, rich colour and full original gum, VF **500.00**
- 243 P #223, 20c Green Map of Newfoundland Die Proof on wove paper, 68 x 50mm, mounted on thick grey card with hand drawn framelines, scarce, VF **Est. 400.00**



1937 KING GEORGE VI LONG CORONATION



- 244 ★ #234b, 1937 3c Orange Brown King George VI, Die I Vertical pair mint, imperforate between, seldom seen, Fine LH **500.00**



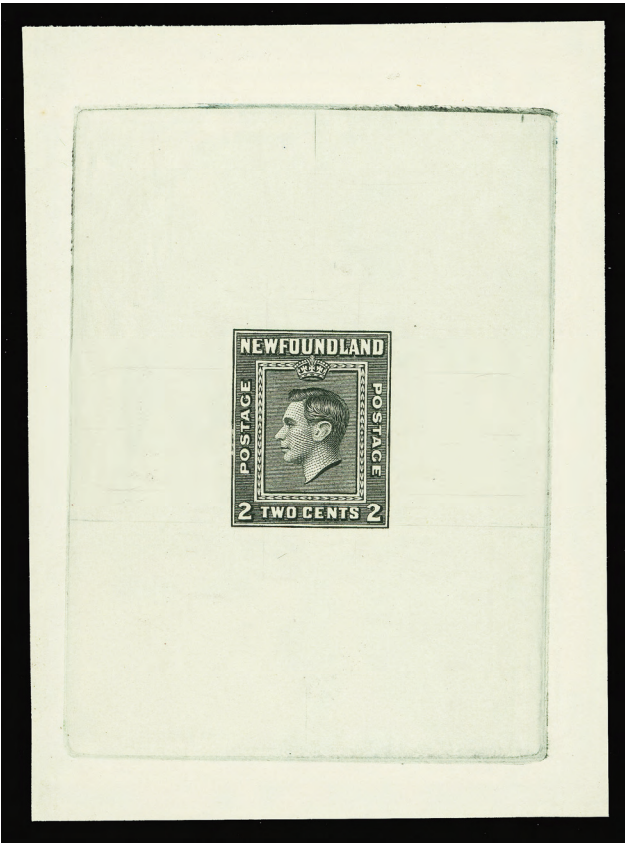
- 245 ★ #234f, 3c Orange Brown KGVII Coronation, Die II Horizontal imperforate pair, ungummed, VF **300.00**



- 246 ★ #234var., 1937 3c Orange Brown King George VI Long Coronation, Die I Imperforate pair, unused without gum. Only the Die II is listed in Unitrade, scarce and VF **Est. 300.00**



247 ★ #236a, 1937 8c Scarlet KGVI Coronation Vertical imperforate mint pair with sheet margin at right, large margins, light hinge and gum crease on top stamp, VF, undercatalogued **350.00**



248 P #245, 2c Black King George VI Large Progressive Die Proof on wove paper, 75x105mm, without cross-hatching in background of the vignette, showing full die sinkage, unlisted in Minuse & Pratt handbook, rare and a great showpiece, VF **Est. 750.00+**

Call us toll free in North America  
Dial 1(800) 667-8267  
or  
Fax us 1(888) 867-8267



## 1941 – 1944 RESOURCES (WATERLOW PRINTING)



- 249 P #265, 25c Black Sealing Fleet Large Trial Colour Die Proof on unwatermarked wove paper, 95 x 68mm, reversed die '17114' number at centre top, large circle at right and tiny cross guidelines added at left and right of design, minute stain spot well away from design mentioned for accuracy only, a rare proof, VF **Est. 750.00+**



- 250 P #266, 48c Black Fishing Fleet Large Trial Colour Die Proof on folded unwatermarked wove paper, 100 x 66mm, showing full die sinkage and reverse die '1232' (albino print) in two corners, small circle at left end and tiny cross marks added at right and left of design. A rare proof for the specialist, VF **Est. 750.00+**

Visit us online [www.easternauctions.com](http://www.easternauctions.com)

or

E-Mail us at [easternauctions@nb.aibn.com](mailto:easternauctions@nb.aibn.com)

# Newfoundland

## Air Post



Lots 251 - 279



AIR POST



- 251 ★B #C2, C2a, 1919 (June 9) \$1 on 15c Scarlet Alcock and Brown Airmail Nice and centered positional mint block of four (Position 3-4 / 8-9); without comma after 'POST' on upper right and lower left stamps. Some perf separation at foot, strengthened by a hinge, full original gum. A scarce multiple, VF OG 1,260.00



-X252-



253

- 252 ★ #C2, C2a, C3, C3b, 1919 (June 9) \$1 on 15c Scarlet Alcock and Brown Two different mint singles with comma and without comma after 'POST'; 1921 (Nov. 7) 35c red Halifax Airmail, two different mint singles; first with wide spacing and no period (light crease), other with wide spacing and with period after '1921', F-VF OG 880.00
- 253 ◎ #C2a, 1919 (June 9) \$1 on 15c Scarlet Alcock and Brown Airmail Centered used example without comma after 'POST', wavy-line cancellation, VF 380.00



- 254 ★B #C3, C3b, C3f, C3h, 1921 (Nov. 7) 35c Red Halifax Airmail An attractive lower right corner positional mint block of four (Position 19-20 / 24-25) showing four different settings: upper left position with narrow spacing and period after '1921'; upper right position, wide spacing and period after '1921'; lower left position, wide spacing and without period after '1921'; lower right position, narrow spacing and without period after '1921'. Top pair lightly hinged and bottom pair never hinged, almost Very Fine 1,885.00



- 255    #C3, C3h, 1921 (November 7) 35c Red Halifax Airmail Two used singles: first with wide spacing and without period after '1921' tied to piece by St. John's (NOV 21 1921) machine wavy cancel, second with narrow spacing and with period after '1921' tied to piece by St. John's (NOV 26 1921) machine wavy cancel. A nice duo, F-VF 500.00



- 256    ★    #C3c, 1921 (November 7) 35c Red 2¾mm spacing between "AIR" and "MAIL", with period after "1921", INVERTED OVERPRINT, an attractive mint example, negligible gum bend mentioned for strict accuracy, lovely fresh colour and possessing full original gum, Fine LH, 2007 Greene Foundation cert. 7,500.00

A RARE HALIFAX AIRMAIL ISSUE WITH INVERTED OVERPRINT. ONLY 28 WERE PRINTED SHOWING THE WIDE SPACING AND PERIOD AFTER "1921"



257



258

- 257    #C3f, 1921 (Nov. 7) 35c Red Halifax Airmail Narrow spacing, without period after '1921', well centered used example with wavy-line cancellation, VF 450.00
- 258    ★    #C3h, 1921 (Nov. 7) 35c Red Halifax Airmail Narrow spacing, with period after '1921', a nicely centered mint example with lovely fresh colour and full original gum, VF NH 640.00



- 259    E    1922 Vimy Airmail Essays Engraved set of two, perf 14x13½, one in red brown & black, the other red brown & blue, plus an imperforate single with sheet margin in red brown & black. Also an essay imitation embossed in brown & green on glazed and gummaged paper. A scarce group, VF **Est. 300.00+**

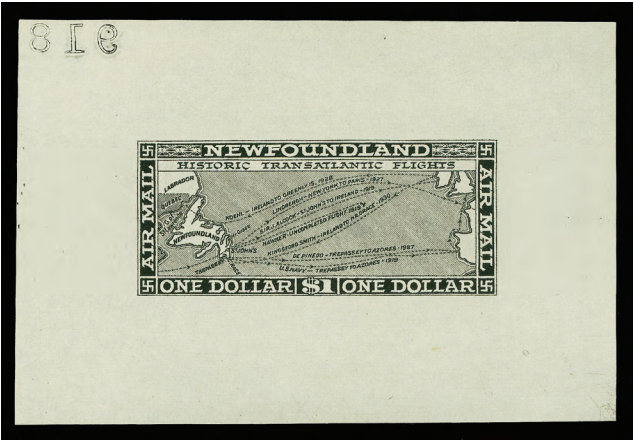
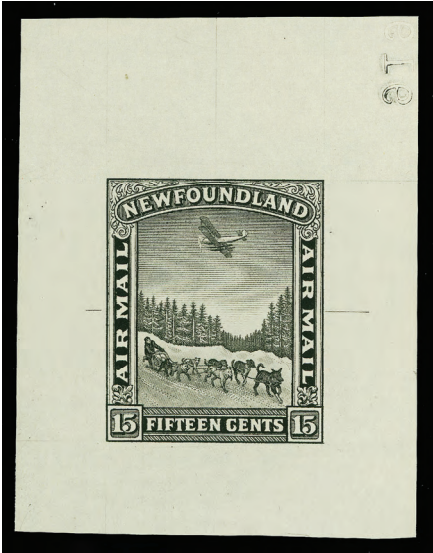


- 260 ☒ 1930 (September 25) "Columbia" Flight Cover bearing single 4c and 10c Publicity (re-engraved) and 36c olive green Caribou (small tone spot) for the correct rate, neatly tied by St. John's slogan cancellation, endorsed "per air mail Columbia Harbour Grace to London", backstamped Harbour Grace (OC 9 30), London (13 OC 30) arrival on back and forwarded back to Canada with Farham, PQ (OC 24) receiver. Light central cover fold and repaired corner at upper left that in no way detract. A very scarce Supplementary Mail cover, The one offered here is especially appealing, being autographed by Harry P. Connor, the "Columbia" flight navigator. F-VF **Est. 750.00+**



- 261 ☒ 1930 (September 25) "Columbia" Flight Cover franked with single 4c & 10c Publicity (re-engraved) and 36c olive green Caribou, tied by St. John's slogan cancellation, neat strike of Harbour Grace (OC 9 30) backstamp, with Baile Atha Cliath (13 OC) Irish receiver on back. Cover is unusually fresh and in an excellent state of preservation. A scarce Supplementary Mail cover from St. John's, VF **Est. 750.00**

Have you been thinking of selling your collection?  
 Call us 1(800) 667-8267 ask for Gary J. Lyon.  
 Give your collection the attention it deserves.  
 Consign your stamps to Eastern Auctions Ltd.



262 P #C6-C8, 15c, 50c & \$1 Black Pictorial Airmail Large Trial Colour Die Proof complete set of three on unwatermarked wove paper, each showing reversed die number at upper left corner, small light thin spot on the \$1, a very scarce and attractive set, VF Est. 1,000.00



263 ★B #C6-C8, C9-C11, 1931 15c, 50c & \$1 Pictorial Airmail Issues Both sets of three unwatermarked and watermarked, in mint blocks of four, reasonably centered with some never hinged stamps including two on each \$1 block, etc. F-VF LH 1,650.00



264 ★ #C6c, 1931 15c Brown, Unwatermarked Imperforate pair with full even margins, unused (regummed), scarce, VF **800.00**



265 ★ #C7c, 1931 50c Green, Unwatermarked An attractive upper left sheet corner imperforate mint pair with nice colour and full original gum, characteristic small natural gum skip on top stamp mentioned for the record, VF NH **1,350.00**



266 ★ #C8b, 1931 \$1 Blue, Unwatermarked Vertical mint pair imperforate between, lovely fresh colour, reasonably centered, full original gum hinged at top, almost Very Fine centering and very scarce **1,075.00**



267



268

- 267 ★ #C8c, 1931 \$1 Blue, Unwatermarked Gorgeous fresh and selected mint imperforate pair with sheet margin at top, full original gum, scarce, VF NH **1,350.00**
- 268 ★ #C8var., 1931 \$1 Blue, Unwatermarked Lower right sheet corner mint pair, imperforate vertically at right between stamps and sheet margin, nicely centered, fresh and with full original gum, hinged in bottom sheet margin only leaving both stamps never hinged. A neat and unlisted variety, VF NH **Est. 750.00+**



269



270

- 269 ★ #C9a, 1931 15c Brown, Watermarked Well centered horizontal pair imperforate between, very scarce, VF OG **1,200.00**
- 270 ★ #C9c, 1931 15c Brown, Watermarked A scarce imperforate mint pair with full even margins, full original gum, VF LH, choice **750.00**



- 271 ★ #C12, 1932 (May 19) \$1.50 on \$1.00 Blue Dornier DO-X Flight A nice and selected mint example, very well centered within large margins, VF OG **400.00**



- 272    ☒    **#C12 1932 (May 19) Dornier DO-X Flight** Cover franked with reasonably centered single \$1.50 on \$1 blue surcharge and neat St. John's slogan cancellation, addressed to the Postmaster General in Liverpool, clean and fresh, VF **Est. 500.00**



- 273 ★B #C13-C17, 1933 5c-75c Labrador Issue A fresh matching set of five well centered mint blocks of four with sheet margin at left, each block hinged at top leaving bottom pairs never hinged, VF
- 1,325.00



274 ★B #C13a-C17a, 1933 5c-75c Labrador Issue A most attractive mint set of five imperforate blocks of four, all with sheet margin at left and large margins on other sides, fresh colours and with full original gum, bottom pairs of the 5c and 10c are NH. A rarely encountered set in blocks; ideal for exhibition. VF LH 6,360.00



275 ★ #C13a-C17a, 1933 5c-75c Labrador Issue Fresh and complete mint set of five imperforate pairs; 30c is an ungummed horizontal pair, others are vertical with full original gum with one lightly hinged stamp, VF set 3,000.00



- 276 ★B #C18, 1933 (July 24) \$4.50 on 75c Bistre Balbo Flight Well centered mint setting block of four, deep colour, full original gum has some faint yellowing, lower pair never hinged, VF **2,860.00**



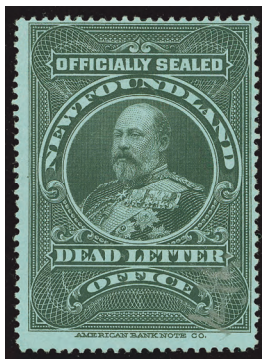
- 277 ★ #C18, 1933 (July 24) \$4.50 on 75c Bistre Balbo Flight Position 1 from the sheet, well centered mint example with deep rich colour and full original gum, small hinge remnant, VF OG **550.00**



- 278 ☒ #C18 1933 (July 26) Balbo Flight Cover franked with centered single \$4.50 on 75c bistre, perf 14 (Position 2), tied by clear St. John's CDS postmark, neat Italian flight cachet in blue alongside, Shoal Harbour (JUL 27) transit, Rome (12.8.33) arrival backstamps, also re-dispatch (15.8.33) and St. John's (AUG 28) large receiver on back, VF **Est. 1,000.00**



- 279    ☒    **#C18 1933 (July 26) Balbo Flight** Cover, addressed to Rev. E. A. Butler, franked with a well centered single \$4.50 on 75c bistre, perf 14 (Position 4), tied by clear St. John's CDS postmark, neat Italian flight cachet alongside, Shoal Harbour (JUL 27) transit, Rome (12.8.33) arrival backstamps, also re-dispatch (15.8.33), St. John's (AUG 30 33) and Sandy Point (SP 1 33) backstamps, clean and fresh, VF **Est. 1,000.00**

**OFFICIALLY SEALED, PARIS / ESSAYS AND REVENUES**

- |     |   |   |        |
|-----|---|---|--------|
| 280 | ⊙ | #OX1, 1905 King Edward VII Officially Sealed Black on Blue Paper Used lightly cancelled example, not creased as are the majority of known examples, scarce thus, Fine | 450.00 |
|-----|---|---|--------|



- 281 B E 1900 (circa.) "Paris Essays"** Imperforate se-tenant block of four printed in brown on wove paper, ungummed, showing four different designs with three different denominations, consisting of 1c, 3c and 5c and undenominated. The first time we have seen such a multiple, very scarce. VF **Est. 500.00**



- 282 F** **1900 (circa.) "Paris Essays"** Selection of six different which consist of perforated 11 on unwatermarked and gummed paper; 1c in black, 1c in blue, 3c in carmine, 5c in red brown, also undenominated Lighthouse vignette in blue green and an imperforated and ungummed single on wove paper of the 10c in brown. Various designs including horse, ship and train, couple with trivial flaws. An interesting lot, very seldom offered, Fine+ **Est. 400.00**



283



284

- 283 B E** **#Walsh RTE1, 1922 (November) 2c Blue Black Newfoundland Dog** Inland Revenue Essay Plate Proof block of four on wove paper, unwatermarked, large margins all around, rarely seen as a block, ideal for exhibition, VF **Est. 1,500.00**
- 284 B E** **#Walsh RTE2, 1922 (November) 2c Red King George V** Inland Revenue Essay Plate Proof block of four on wove paper, unwatermarked, well clear to large margins. A very scarce and attractive multiple for the specialist, VF **Est. 1,000.00**

### NEWFOUNDLAND LARGE LOTS AND COLLECTIONS

- 285 ★ P B** **Proofs and Imperforates Balance of Collection** Several dozen items throughout, displayed in a stockbook, starting with some Cents issues proofs and trial colours (various colours), #60e (torn at UL; still very scarce), 80b, 1897 Cabot set of 13 (missing the 4c) plate proof singles (all cut close), 114a block, 184c, 186d, 189d, 191b pair and a block, 193a (two pairs), 212a (three pairs and one block), 214a, 215a (three pairs), 245a-248a, 1922 Vimy essay imperf single in brown and black on wove paper, etc. Condition throughout ranges from mixed to Very Fine. Well worth a closer look. *(Not Illustrated)* **Est. 2,500.00+**
- 286 ★☉ ☒** **Back of Book Collection** Brown springback album with 1908 Labrador labels (with original gum, very scarce thus) 1931 Maritime & Newfoundland Airways, unofficial airmails (5 different), postal stationery (5 different covers / cards, plus some cut squares), some revenues and Postage Dues (noted J7 UL and UR blocks with "LUE" variety), etc. F-VF *(Not Illustrated)* **Est. 250.00+**

E-Mail us at [easternauctions@nb.aibn.com](mailto:easternauctions@nb.aibn.com)



-X287-



X288

- 287 ☉ #1/15, **Used Pence Issues** Eight different which includes used #1, 3, 5, 8, 11, 12, 13 and 15. All have small faults. Also includes #9 (bisect on piece). Inspect **Est. 750.00**
- 288 ☉ #1/23, **Balance of Used Pence Issues** Selection of 28 stamps, noted #1, 8 (2), 12, 17 (2), 21 (3), 23 (4). Some dubious cancels and small faults noted as to be expected, otherwise Fine or better **Est. 500.00+**



X289



-X290-



- 289 ★ #1, 11A, 1857 One penny brown violet selection of eight singles and 1860 Three pence green selection of nine singles and one pair, all with margins and unused, some with original gum, condition is mainly Fine or better **Est. 600.00**
- 290 ★ #3/23, **Balance of Mint / Unused Pence Issues** Selection of 43 stamps, including some better such as #3, 5 (2), 8, 11 (2), 12A (3), 15A (4), 17 (6), etc. Most have original gum, some flaws to be expected otherwise Fine or better **Est. 1,000.00+**



- 291 ★B #18/23, **1861-1862 Pence Issues** Selection of mint blocks of four, including the 4p (two blocks of four; one is unused), 5p one block of four, 6p (three blocks of four and two pairs), 1sh (two blocks of four). F-VF or better **Est. 500.00**



- 292 P #24/35, Cents Issue Plate / Trial Colour Proofs** Group of 35 items, most with usual mounting stain spots or india thins, otherwise a nice range of trial colours on #32 and #32A, plus includes scarce #25 in vermilion and orange red, etc. A neat lot for the specialist, F-VF appearance **Est. 600.00+**



- 293 ★ #24/59, Cents Issue Mint Collection** Includes 43 stamps neatly displayed in a stockbook, mostly selected for better centering. Includes #24-31, 24a, 32-40, 41-59, plus some shades and #55 with major misperf, 56 with "Service." (Hechler overprint). Some minor flaws noted especially on earlier issues, but condition is nicer than normally encountered, Fine or better throughout **Est. 1,000.00+**
- 294 ★ #24/59, Balance of Mint Cents Issues** Selection of 59 stamps, with better such as #24 (4), 25, 26 (2), 28 (3), 30, 32 (2), 32A (3), 33 (2), 34, 37 (3), 38, 40, 57, 59 (2), etc. Some flaws to be expected, otherwise Fine or better *(Not Illustrated)* **Est. 600.00**
- 295 ☉ #24/76, Cents Issue 1860-1897 Used** Collection of 84 stamps, displayed on two stockpages, starting with First Cents Issue up to the 1897 Surcharges, all basic stamps represented including shades and some various cancels. Condition varies from mixed to Very Fine. Worth a look. *(Not Illustrated)* **Est. 500.00+**



X296



X297

- 296 ★B #28/59, Cents Issue Mint Blocks** Valuable selection of 28 mostly mint blocks of four or larger. Includes #28, 29 (2), 30, 31 (2), 35, 36, 41 (2; both regummed), 42, 44, 45, 45a, 46, 48, 48b, 49, 51, 52, 55 (2), 56 (one block of four, plus plate imprint block of 8), 58 (one block of four, plus two plate imprint blocks of 8), 59. Centering ranges from Fine to Very Fine, some flaws noted but some are never hinged. Worth a look. **Est. 1,000.00+**

- 297    **⊙B**    **#43/60i, Cents Issue Used Blocks** Selection of eleven different used blocks of four, includes #43, 46, 47 (block of ten), 48, 52, 53, 57, 58, 60 and 60i. Some with dubious cancels, Fine or better  
*(Illustrated on Page 96)*    **Est. 350.00+**



- 298    **★⊙**    **#60(shades), 1890 3c Queen Victoria** Collection neatly displayed in black mounts on five quadrilled pages with write-up. Includes mint singles (6), blocks of four (9; one shows full imprint in top sheet margin), plus 16 used singles. Collected for shades and carefully identified. A good opportunity for the specialist, Fine to Very Fine throughout  
**Est. 500.00+**
- 299    **★B**    **#61/229, Selection of Mint Blocks of Four** 24 different, includes #70, 78-86, nice 126 (NH), etc. Some never hinged stamps, mainly F-VF throughout  
*(Not Illustrated)*    **Est. 200.00+**
- 300    **★**    **#61/229, Clean Mint Collection** Nicely displayed in a red stockbook and all in COMPLETE mint sets; 1897 Cabot, 1897-1901 Royal Family, 1910-1911 John Guy Issues, plus some perf changes, 1911 Royal Family, 1919 Caribou, 1923-1924 Pictorial, 1928-1931 Publicity Issues, 1933 Gilbert, plus some perf changes and 1935 Silver Jubilee. Fresh and centering is mainly F-VF or better  
*(Not Illustrated)*    **Est. 1,000.00+**
- 301    **★**    **#61/229, Mint Balance** Few dozen different mint stamps, some issues lightly duplicated. Includes #92 (2), 94, 95, 96, 98 (2), 99, 100, 102, 103, 110a, 123 (4), 125 (3), 144 (2), etc. Also stockpages with used issues. Mainly F-VF throughout  
*(Not Illustrated)*    **Est. 500.00**
- 302    **⊙B**    **#61/229, Nice Collection of Used Blocks** Includes 78 different used blocks of four, covering 1897 to 1935 period, many with selected CDS postmarks. A difficult lot to duplicate, a fantastic start on a used block collection, F-VF  
**Est. 300.00+**
- 303    **⊙**    **#61/229, Clean Used 1897-1935 Collection** Nicely displayed in two blue stockbooks and all in COMPLETE used sets; 1897 Cabot, 1897-1901 Royal Family, 1910-1911 John Guy Issues, plus some perf changes, 1911 Royal Family, 1919 Caribou, 1923-1924 Pictorial, 1928-1931 Publicity Issues, 1933 Gilbert and 1935 Silver Jubilee. Mainly F-VF or better  
*(Not Illustrated)*    **Est. 500.00+**

Fax in your Bid(s) toll free in North America  
Dial 1(888) 867-8267



- 304 ★◎ **#75/211, Collection of 1897-1933 Surcharges and Overprints** A nice and comprehensive collection, neatly displayed in black mounts on quadrilled pages with write-up. Includes 1897 1c on 3c (four singles and two blocks of four, all Type A); 1920 2c on 30c (six singles and six blocks of four), 3c on 15c (scarce Type I with three singles and Type II with eight singles and one block of four), 3c on 35c (twelve singles and two blocks of four); 1929 3c on 6c with six singles, two blocks of four and one block of nine; and 1933 15c Land & Sea Post with two singles and three blocks of four. Also 1920 (SP 30) Envelope with "POSTAGE PAID / G.P.O. / ST. JOHN'S NEWFL'D" provisional handstamp, due to shortage of postage stamps (a practice which only lasted for one month). Mint or Used including some scarcer used multiples, nice quality throughout, Fine to Very Fine **Est. 1,000.00+**
- 305 ★◎ **#183-210, 1932-1937 Resources Issue Collection** Nice collection displayed on quadrilled leaves with write-up in a brown springback album, issue complete and represented by mint single and block of four and used single and block of four, plus shades and noted some perforation varieties. Also includes five mint booklet panes of four. A clean lot, difficult to assemble, Fine to Very Fine throughout *(Not Illustrated)* **Est. 750.00+**



- 306 ★ **#184c/199a, 1932-1937 Resources Issue (Perkins Bacon Printing)** Clean lot of ten different imperforate mint pairs, all NH unless noted; 184c, 186c (OG), 186iii, 187d, 189a, 191b, 192a (unused; some ink offset on front), 193a, 199a (LH; light crease) and 209a. VF **1,225.00**
- 307 ★◎ **#230/270, 1937-1949 Comprehensive Collection** Housed in a brown springback album in black mounts on quadrilled pages with write-up, comprehensive collection, in most cases issues are represented by a mint single and block of four and a used single and block of four, the 1941-1944 Resources includes matched sets of plate blocks, etc. Clean lot and a solid basis for continuation, Fine to Very Fine *(Not Illustrated)* **Est. 500.00+**
- 308 ★◎ **#C3b/C17, Brown springback album with collection of Airmails**, noted C3b used on Nov. 20, 1921 cover fragment, C3h used on Nov. 22 1921 cover (addressee crossed out), mint C6-C11, used C6-C10, 1932 \$1 Wayzata LR block of four, C12 (unused), mint C13-C17, used C13-C17, etc. F-VF *(Not Illustrated)* **Est. 400.00+**

END OF AUCTION  
THANK YOU

# Celebrating 20 Years!

## NEWFOUNDLAND SPECIALIZED<sup>6th edition 2006</sup> Stamp Catalogue



with stamps of Classic Canada to 1951;  
and Colonies: New Brunswick; Nova Scotia;  
British Columbia; Prince Edward Island

with assistance from C. R. McGuire FRPSC  
and contributions from Charles J. G. Verge, FRPSC, FRPSL  
and detailed postal rate information from Brian D. Murphy

John M. Walsh

John G. Butt (1939 - 2000)

with: magnifier; decimal perforation gauge; NFld. map

ISBN 0-965

order  
your copy  
today!

### Price

**\$110.00** CAN - North America XpressPost

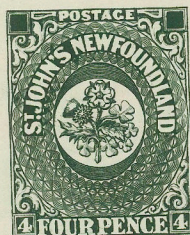
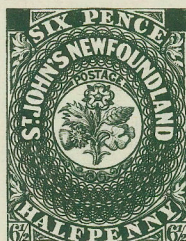
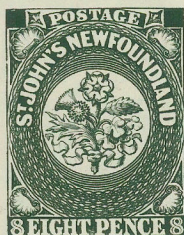
**\$125.00** CAN - Worldwide Airmail

## Walsh's Philatelic Service

9 Guy Street - St. John's - Newfoundland - Canada - A1B 1P4

info@nfldstamps.com - www.nfldstamps.com

Phone: 1-709-685-0560 - Fax: 1-709-722-3476



OF  
ST. LAWRENCE

Magdalen  
Islands

PRINCE EDWARD  
ISLAND

CAPE BRETON

NEWFOUNDLAND

St. George Bay

St. Cray

Port aux Basques

Hermitage Bay

Miquelon  
Is. (Fr.)

Fortune Bay

Plover Bay

St. Mary