

Public  
Auction

# Eastern Auctions Ltd.



## The John Smallman Collection of the Admiral Issue of Canada

Gary J. Lyon  
Licensed & Bonded Auctioneer

February 23  
2018



# Eastern Auctions Ltd.

P.O. Box 250, Bathurst, New Brunswick, E2A 3Z2, Canada

Tel: 1 (506) 548-8986 • Fax: 1 (506) 546-6627

Toll Free Tel: 1 (800) 667-8267 • Fax: 1 (888) 867-8267

E-Mail: [easternauctions@nb.aibn.com](mailto:easternauctions@nb.aibn.com)

Web Site: [www.easternauctions.com](http://www.easternauctions.com)

## PUBLIC AUCTION BID SHEET

*Sale Date: February 23, 2018*

*Please buy the following lots for me at prices not exceeding those shown. I have read the conditions of sale at the end of the catalogue and understand the 15% buyer's premium.*

Signature: \_\_\_\_\_

Customer #: \_\_\_\_\_

Name: \_\_\_\_\_

Address: \_\_\_\_\_ City: \_\_\_\_\_

Province/State: \_\_\_\_\_ Postal/Zip Code: \_\_\_\_\_

Country: \_\_\_\_\_

Telephone: \_\_\_\_\_ Fax: \_\_\_\_\_

E-Mail: \_\_\_\_\_

### Credit Card Payment

☐ Please charge my purchases to my credit card

*I agree to pay a surcharge of 3.5% of the hammer amount.*



Card #: \_\_\_\_\_ Exp Date: \_\_\_\_\_

Cardholder's Name (as it appears on card): \_\_\_\_\_

Billing Address if different from address printed above:

\_\_\_\_\_  
\_\_\_\_\_  
\_\_\_\_\_  
\_\_\_\_\_  
\_\_\_\_\_  
\_\_\_\_\_

Signature: \_\_\_\_\_

References (First time bidders only): \_\_\_\_\_

\_\_\_\_\_  
\_\_\_\_\_  
\_\_\_\_\_

☐ Please tick this box if you  
are bidding in US Dollars:

*If necessary to secure a lot,  
you may raise my bids by:*

10% ☐ 20% ☐



Bidding is conducted in the following increments:  
*(Uneven bids will be rounded downwards)*

<i>\$10 - \$50..... \$2.00</i>	<i>\$800 - \$1,500..... \$50.00</i>	<i>\$16,000 - \$30,000..... \$1,000.00</i>
<i>\$55 - \$130..... \$5.00</i>	<i>\$1,600 - \$3,000..... \$100.00</i>	<i>\$32,500 - \$75,000.... \$2,500.00</i>
<i>\$140 - \$300..... \$10.00</i>	<i>\$3,250 - \$7,500..... \$250.00</i>	<i>\$80,000 - OVER..... \$5,000.00</i>
<i>\$325 - \$750..... \$25.00</i>	<i>\$8,000 - \$15,000..... \$500.00</i>	

*We are not responsible for bidder errors.  
Please check bids and print clearly.*

LOT #	BID	LOT #	BID	LOT #	BID	LOT #	BID	LOT #	BID

*Bid early to avoid disappointment  
View this sale on our Web Site: [www.easternauctions.com](http://www.easternauctions.com)*

*You may mail, fax, e-mail or phone in your bids. Phone bids must be confirmed in writing.  
Mailing your bids less than two weeks prior to the sale is not recommended.*

# **Eastern Auctions Ltd.**

## **PUBLIC AUCTION**



### **The John Smallman Collection of the Admiral Issue of Canada**

**February 23, 2018  
Halifax, Nova Scotia**

#### **Eastern Auctions Ltd.**

P.O. Box 250, Bathurst, New Brunswick, E2A 3Z2, Canada

Tel: 1 (506) 548-8986 • Fax: 1 (506) 546-6627

**E-mail: [easternauctions@nb.aibn.com](mailto:easternauctions@nb.aibn.com)**

**Web Site: [www.easternauctions.com](http://www.easternauctions.com)**



## AUCTION INFORMATION

---

For assistance and further information  
please contact:

**SPECIALISTS IN STAMPS:**

Gary Lyon  
Yohann Tanguay

**WEB SITE:**

Luc Doucet

**CONSIGNOR SETTLEMENTS/  
ACCOUNTS RECEIVABLE:**

Cindy Rogers

**MAILING LISTS AND  
SHIPPING:**

Catherine Gallagher

**CATALOGUE EDITORS:**

Gary Lyon  
Luc Doucet  
Yohann Tanguay

---

## VENUE

**The Lord Nelson Hotel & Suites**

1515 South Park Street  
Halifax, Nova Scotia  
B3J 2L2 Canada  
Tel: 1 (902) 423-6331

Toll Free Tel: 1 (800) 565-2020

*For Room Reservations Only*

TERMS OF SALE AND AUCTION AGENTS  
ARE LISTED AT THE BACK OF THE CATALOGUE.

**Viewing Sessions** *(Victoria Suite - Third floor)*

**Thursday February 22, 2018** – 9:00am to 7:00pm

**Friday February 23, 2018** – 9:00am to 12:00pm

**Auction Sessions** *(Victoria Suite - Third floor)*

**Friday February 23, 2018** – Auction Session One - 1:30pm (Lot 1-349)

Auction Session Two - 6:00pm (Lot 350-646)

## Allure of the Admiral Issue

Leopold Beaudet

Robert A. Bayes, Ian Bett, Frank W. Campbell, Robert A. Chaplin, Abe Charkow, Fred Goodhelpsen, Clare M. Jephcott, Stan Lum, Harry W. Lussey, Sandy Mackie, George C. Marler, Frederick T. Norris, Hans Reiche, Daniel G. Rosenblat, John Smallman, Allan L. Steinhart, John Tomlinson, Major K. Hamilton White ... These illustrious philatelists and many more shared a common passion for the Admiral issue although some are better known for other philatelic pursuits.



What attracted them to Admiral stamps? There is no single answer to this question, which is not surprising given the diverse areas of specialization offered by these definitives. The first Admiral stamp appeared at the end of 1911 and the last one was replaced in mid 1929 except for a blip in 1931. The nominal 17-year life is one of the longest among Canadian definitive series. During those years, the Admiral issue was buffeted by world events, shaped by innovations in stamp production, and marked by advances in mail processing and distribution. Add an attractive design and eye-catching colours, and it is little wonder that collectors find Admiral stamps and postal history challenging and rewarding.

Over 15 billion Admiral stamps were printed from upwards of 850 plates. Although the bulk of the 15 billion were sheet stamps, booklets proliferated in the Admiral era and for the first time coil stamps were produced in quantity for sale in post offices and vending machines. Complementing the stamps is a wealth of postal history fuelled by rate changes, World War I military mail, the War Tax, the explosion of rural mail, the expansion of railway post offices, the settlement of the prairies, and the introduction of airmail.



Admiral collectors have probably devoted more time studying constant plate varieties than any other area. These varieties include re-entries, retouches, scratches and other flaws, guidelines, and guide dots. The best known re-entry on a Canadian stamp is probably the one on the 1¢ green, plate 12, lower right pane, position 35 (12LR35). To date, almost 50 copies have been found among the over 3 billion 1¢ green stamps printed [1], a testament to the diligence of collectors in searching for this re-entry and many others. With over 850 plates, finding and plating varieties might seem daunting; however, Marler's seminal work on design types described in his 1982 book [3] reduces the task to manageable proportions. As Randall W. Van Someren discussed in an article in *BNA Topics* [8], design types are constant characteristics that are common to all or most stamps from one or more plates. Identifying the design type typically narrows the search for a flaw to just a few plates.

Colour shades have attracted many Admiral enthusiasts. Although colour variations are inevitable over a 17 year life span, longevity is only an incidental explanation. The printer, American Bank Note Co., obtained its ink supplies from Germany. These supplies were cut off when World War I began, and the printer had to find other sources, resulting in a variety of shades until a new stable ink source was found. Shades were also the by-product of advances such as the migration from wet to dry printing. Most shades can be arranged in chronological order because they resulted from outside events and printing improvements rather than random changes in ink mixture. Since successive plates were manufactured in chronological order, shades on most values (the 3¢ brown is a notable exception) can be correlated to plates. Thus, shades can help in determining design types and studying plate varieties. Another ink variety that is useful is sorting and plating is the fluorescence of the ink on all carmine stamps (the 2¢, 2¢ War Tax, 2¢+1¢, and 3¢). From early 1916 onwards, the ink mixture included a component that fluoresces a bright red under a u-v lamp.





Some collectors have been drawn to plate imprints. The number of imprints is seemingly inexhaustible: one per pane, times two or four panes per plate, times about 750 sheet plates. Many are surprisingly scarce – finding almost any imprint of the 3¢ brown between plates 40 and 80 is nearly impossible. But there’s more! Up until 1915, ABN punched a printing order number on the plate, usually near the imprint. If a plate were used to fulfill more than one order, the previous order number was defaced and the new one punched in. Plates are known with one, two, and even three printing order numbers.

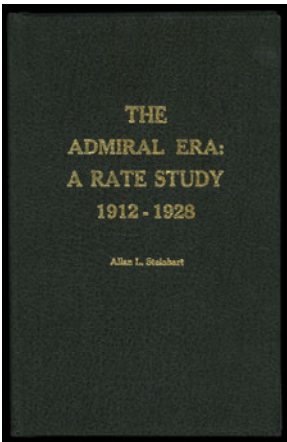


The most sought-after Admiral marginal marking is probably lathework. There are six different lathework patterns plus four inverted patterns on 20 different stamps (27 if the imperf, part-perf, and overprinted stamps are counted separately). This resulted in no less than 52 different stamp-lathework combinations. Although some are reasonably common, many are scarce. For two of the 52, only one copy is recorded: the 3¢ brown with Type E lathework [4] and the 1¢ yellow with Type B lathework [2]. Other marginal markings, even more challenging to find, are pyramid lines and R-GAUGE inscriptions. It is now generally accepted that the lathework served as “hold-down strips” [5] [ 6], and pyramid lines were used as perforation guides, but the reason for the R-GAUGE inscriptions is unknown.



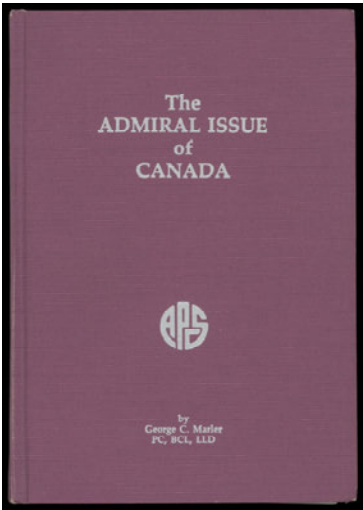
The Admiral issue provides a rich field for postal history collectors. There were several rate changes during the period [7], a notable one being the imposition of the War Tax on domestic, North American, and British Empire mail (except for postcards to British Empire destinations) on 15 April 1915. Finding covers to specific destinations can be a challenge because, except for a handful of western European countries, UPU covers are scarce. Postmarks abound: circular, duplex and other hand cancels, machine cancels, RPO markings, postmarks from small post offices (such as the

town of Admiral in Saskatchewan), registration markings, etc. The introduction of COD, postage meters, forms for the bulk payment of circulars, and the start of airmail delivery all happened during the Admiral era.



Admiral collectors are fortunate in having a large number of books and articles dealing with the stamps and postal history. Two books in particular stand out. In his monumental 1982 book, *The Admiral Issue of Canada* [3], George C. Marler describes in detail the design and printing of the Admiral issue and records the design types, re-entries, and

retouches found on them based on his examination of the plate proofs now preserved by Library and Archives Canada. In his 1981 book, *The Admiral Era: a Rate Study 1912 – 1928* [7], Allan L. Steinhart does for Admiral postal rates what Marler did for stamps. Based on Post Office files now held by Library and Archives Canada, he provides a comprehensive survey of the rates in effect throughout the Admiral era.



Although the Admiral issue has been studied extensively since it first saw light just over 100 years ago, it is still producing surprises in the form of major discoveries. Discoveries made in the past few years include major re-entries on several values, plate numbers that Marler thought did not exist, pyramid lines on the 2¢ green not found on the plate proofs, a new file mark pattern on the 3¢ brown, new horizontal mesh paper varieties, etc. John Smallman's collection in this auction catalogue includes a major discovery not reported by Marler – the 1¢ yellow with Type B lathework alluded to above. Perforated 1¢ yellow sheet stamps come with Type C, D, D inverted, and D1 lathework, the imperf 1¢ yellow comes with Type B and D, and the part-perf coil stamps come with Type B. Since the coils come from coil plates 11 and 12, which have Type B lathework, one might conclude that these two plates are the source of the sheet stamps with this lathework pattern. Not so. An examination of the plate proofs reveals that the source was plate 150, a major surprise because this plate had previously only been known for printings of the 1¢ green [2].

To summarize, this issue offers diverse areas of specialization, an abundance of information in philatelic literature and the enticement of new discoveries still waiting to be made

Will the Admiral Issue continue to entice new collectors? For the answer look no further than the keen interest already generated by this auction. John Smallman dedicated his collecting efforts to the issue over a forty year period. His name is a fitting addition to the collectors mentioned at the beginning of this article.

### References

1. Leopold Beaudet, "Census of the 1¢ Green Re-entry 12LR35 – Reboot", *The Admiral's Log*, Vol. XIII, No. 1, Dec. 2013.
2. Leopold Beaudet, "A Major 1¢ Yellow Lathework Discovery", *The Admiral's Log*, Vol. XIV, No. 1, to be published.
3. George C. Marler, *The Admiral Issue of Canada*, American Philatelic Society, 1982.
4. R.F. (Hank) Narbonne, "Admiral lathework – type E special", *BNA Topics*, Vol. 61, No. 3, July-Sept. 2004.
5. Daniel Rosenblat, "Some Notes on the Lathe Work on the Admiral Issue of 1911-1925", *BNA Topics*, Vol. 26, No. 2, Feb. 1969.
6. Daniel Rosenblat, "Admiral Lathework", *BNA Topics*, Vol. 27, No. 5, May 1970.
7. Allan L. Steinhart, *The Admiral Era: A Rate Study 1912 – 1928*, Jim A. Hennok Ltd., 1981.
8. Randall W. Van Someren, "Marler's Admiral Types", *BNA Topics*, Vol. 71, No. 3, July-Sept. 2014.

Copyright © Leopold Beaudet, 2018







## The John Smallman Collection of the Admiral Issue of Canada

Friday February 23, 2018 (Lot 1-646)

Auction Session One begins at 1:30pm (AST) from Lot 1 - 349

Auction Session Two begins at 6:00pm (AST) from Lot 350 - 646

### IMPERFORATE AND PART-PERFORATE

- 1 ★ Mid 1920s 4c-\$1 King George V Admiral Issue** A fabulous COMPLETE set of eight imperforate pairs, plus the very difficult imperforate pair of War Tax 2c+1c brown, Die II, wet printing. All nine pairs originate from the upper right corner of the sheet and left side of the guide arrow; see note below regarding the \$1 orange pair. Each pair is exceptionally fresh and displays large margins; apart from the 4c, 50c and 2c+1c War Tax pair issued without gum, all are hinged in the sheet margin only leaving each pair NEVER HINGED.

- 4c yellow ochre (Plate 6) negligible gum thin on right stamp, VF LH
- 5c violet, redrawn framelines (Plate 23), VF
- 7c red brown (Plate 7), VF
- 8c blue (Plate 1), pinhole at UR corner frame of right stamp, VF
- 10c bistre brown (Plate 25), VF
- 20c olive green, retouched vertical line in upper right spandrel (Plate 9), faint bend, VF
- 50c black brown, re-engraved (Plate 4), usual faults as many known examples do and confined to right stamp, VF appearance
- \$1 orange (Plate 1), light vertical gum crease, VF
- 2c+1c dark brown, Die II (Plate 17) additional shows printing order "937G" number, ungummed as issued, VF; *ex. Michael Roberts (December 2016; Lot 1284)*

(Unitrade 110a-122a, MR4c)

**46,000.00**

Each of these elusive imperforates originate from a single sheet - being the Upper Left Pane of 100 from which a maximum of 50 pairs can still exist.

The One dollar orange imperforate sheet showed a very light impression of the plate imprint; see article in Admiral Log Volume XIII, December 2013. Accordingly guide arrow is absent.

A WONDERFUL SET OF IMPERFORATE PAIRS INCLUDING THE ELUSIVE WAR TAX DIE II PAIR - A VALUABLE AND DESIRABLE POSITIONAL SET.



X1





- 2 ★ **1c, 2c & 3c Admiral (Wet Printing), Part Perforate Coils (Sheet Format)** Set of three pairs, characteristic deep rich colours only found on the wet printings, with intact perforations and extremely well centered for these; apart from one natural gum inclusion on the 3c, choice VF NH (Unitrade 126c, 128ai, 130a) **3,750.00**



- 3 ★ **1c, 2c & 3c Admiral (Wet Printing) Part Perforate Coils (Sheet Format)** Well centered mint blocks that are notorious for being often badly centered, large part original gum, relatively lightly hinged; few blunt perfs at left on 2c. A scarce trio in well-above average condition, VF LH (Unitrade 126c, 128a, 130a) **3,500.00**



- 4 ★ **3c Carmine, Die I (Wet Printing), Part Perforate Coil** An unusually well centered mint block imperforate horizontally, characteristic deep shade associated with this issue, intact perforations and full original gum; VF NH (Unitrade 130a) **3,750.00**





5



6

- 5 ★ **1c Yellow, Die I (Wet Printing), Imperforate** An impressive positional interpanneau block showing complete guide arrow in sheet margin at top; left pair being Positions 10 & 20 from upper left pane and right-hand pair Positions 1 & 11 from upper right pane; LH in selvage leaving stamps NH. Very few interpanneau multiples have survived; a wonderful item for the specialist, VF (Unitrade 136 variety) **Est. 1,000.00+**
- 6 ★ **3c Carmine (Dry Printing), Imperforate** Left margin mint block showing an unusual etched "9" and a ghost print of pyramid lines in the sheet margin; quite possibly originating from the unissued (Plate 129-131) plates, VF OG (Unitrade 138 variety) ex. "*Lindemann*" collection **Est. 250.00+**



7



8

- 7 ★ **2c+1c Yellow Brown, Die I War Tax** A large margined imperforate block with sheet margin left, ungummed as issued, VF (Unitrade MR4b) **550.00**
- 8 ★ **2c+1c Yellow Brown, Die I War Tax** A selected, fresh, full margined imperforate block, ungummed as issued, VF (Unitrade MR4b) **550.00**



9



10

- 9 ★ **2c+1c Dark Brown, Die II War Tax** An impressive, rarely seen imperforate block of the elusive die, characteristic rich colour, top pair with horizontal crease along bottom frameline, lower pair completely sound, ungummed as issued. Blocks of four are rare (a sole sheet of 100 stamps was issued), VF (Unitrade MR4c) *ex. Harry Lussey (June 1981; Lot 1343)* **6,000.00**
- 10 ★ **2c+1c Dark Brown, Die II War Tax** An imperforate pair of the scarcer die with remarkably large margins, small ink spot on reverse, fresh and ungummed as issued; a very scarce pair in sound condition, VF (Unitrade MR4c) *ex. Robert Chaplin (January 1989; Lot 948)* **3,000.00**



11



12

- 11 ★ **2c+1c Yellow Brown, Die I War Tax** Left margin block imperforate vertically, natural inclusion on one stamp, very scarce with such superior centering, VF-XF (Unitrade MR4ii) **1,500.00**
- 12 ★ **2c+1c Yellow Brown, Die I War Tax** A nice block of four imperforate vertically, bright colour, ungummed as issued; a scarce multiple with almost VF centering (Unitrade MR4ii) **1,125.00**



- 13 ★ **2c+1c Yellow Brown, Die I War Tax** A choice horizontal pair imperforate vertically, well-above centering for this with lovely bright colour and ungummed as issued, VF, scarce this nice (Unitrade MR4ii) **750.00**





14



15

- 14 ★ **2c+1c Yellow Brown, Die I War Tax** A brilliant fresh block imperforate horizontally, reperfed at left, right pair is unusually well centered, ungummed as issued, VF; cat. for a pair only (Unitrade MR4iv) *ex. Robert Chaplin (January 1989; Lot 950)* **750.00**
- 15 ★ **2c+1c Yellow Brown, Die I War Tax** Vertical pair, imperforate horizontally, centered a bit right as often, bright fresh colour and ungummed as issued, F-VF (Unitrade MR4iv) **560.00**

PYRAMID AND R-GAUGE



16



18

- 16 ★ **2c Green (Wet Printing)** A selected, fresh and well centered booklet pane of four showing 3-line Pyramid Guide in tab margin at left, full original gum. Much nicer than many of the few known panes, VF LH (Unitrade 107bi) **4,200.00**
- 17 ★ **2c Deep Green on Thin Paper (Wet Printing)** An impressive positional mint block of twelve from left edge of sheet, showing a clear Pyramid Guide in left margin; pencil notation in selvedge and folded horizontally between third and fourth rows, a lovely fresh multiple, VF NH; cat. for a Pyramid Guide block of four. (Unitrade 107a, 107iii) *(Illustrated on Page 12)* **3,000.00+**
- 18 ★ **2c Yellow Green (Wet Printing)** An exceedingly rare "R-GAUGE" imprint pair, couple nibbed perfs at foot, LH in margin only leaving both stamps NH. Believed to be one of ONLY TWO R-GAUGE multiples known to exist, the other pair is poorly centered (ex. Robert Bayes and "Lindemann" collections) making this pair the finer of the two, VF OG / NH (Unitrade 107vi) *ex. Stan Lum (September 2013; Lot 1133)* **Est. 750.00+**



17



19

- 19 ★ **3c Brown (Dry Printing)** A fresh mint block of eight showing five-line Pyramid Guide in right margin; minor perf separation strengthened by hinges entirely in the margin leaving all stamps never hinged. Very few Pyramid Guide multiples exist on the Three cent brown, Fine and undercatalogued. (Unitrade 108iv) **Est. 1,000.00+**
- 20 ★ **3c Carmine, Die I** A well centered mint block showing "R-GAUGE" imprint in right margin, VF NH (Unitrade 109iv) **(Illustrated on Page 13) 600.00**
- 21 ★ **4c Deep Olive Bistre (Wet Printing)** A rarely seen block showing a strong five-line Pyramid Guide in right margin, exceptional colour; couple minute gum bends, a very difficult to find Pyramid block, Fine+ NH (Unitrade 110iv) **(Illustrated on Page 13) 1,200.00**
- 22 ★ **5c Violet on Thin Paper (Wet Printing)** A pristine fresh mint block showing clear five-line Pyramid Guide in right margin, quite well centered; a very scarce positional block, F-VF NH (Unitrade 112a, 112v) ex. "Lindemann" collection **(Illustrated on Page 13) 2,400.00**





20



21



22



23

- 23 ★ **5c Violet on Thin Paper (Wet Printing)** A very scarce block showing "R-GAUGE" imprint reading up in left margin (ex Plate 22), hinged in selvedge only. A rare combination of R-GAUGE imprint located at lower corner of the pane on thin paper, Fine+ (Unitrade 112a, 112vi)

Interestingly enough, several different denominations (from many different plates) exist with the "R-GAUGE" plate imprint. However, only the Five cent violet shows this imprint on the left margin - reading up - found only on Plate 22, both on regular and thin papers, the latter in our opinion being the toughest. All other "R-GAUGE" imprints show in the right margin and read down. **Est. 750.00+**



- 24 ★ **5c Violet on Medium Wove Paper (Wet Printing)** An exceptionally well centered mint block showing clear Pyramid Guide in right margin, certainly among the best centered available, XF LH (Unitrade 112v) ex. "Lindemann" collection **1,200.00+**



- 25 ★ **5c Violet on Thin Paper (Wet Printing)** Fresh mint block showing clear Pyramid Guide in right margin, scarce, Fine+ NH (Unitrade 112a, 112v) **1,200.00**



- 26 ★ **5c Violet on Medium Wove Paper (Wet Printing)** Lower left block of eight with "R-GAUGE" imprint - reading up in left margin, brilliant fresh colour. A very scarce multiple, Fine+ NH (Unitrade 112vi) *ex. Stan Lum (September 2013; Lot 1136)* **1,200.00+**



- 27 ★ **5c Violet on Medium Wove Paper (Wet Printing)** An impressive and precisely centered lower left block showing "R-GAUGE" imprint - reading up in left margin as opposed to usual imprint reading down in top right margin of a lower right pane, VF LH (Unitrade 112vi) **1,200.00+**





- 28 ★ **10c Light Blue (Wet Printing)** An impressive mint block in an amazing bright, pastel-like shade, showing the very rare Pyramid Guide in right margin, nicely centered. Among the rarest Pyramid Guide blocks of the Admiral issue, VF LH (Unitrade 117ii, 117iv) **3,000.00+**



- 29 ★ **10c Light Blue (Wet Printing)** A remarkably scarce mint block showing Pyramid Guide in right margin, LH on top right stamp, otherwise NH, Fine+ and much scarcer than catalogue values indicate as the pyramid guide on the 10 cent was not present in most of the important Admiral collections of the past. (Unitrade 117ii, 117iv) ex. *Stan Lum (September 2013; Lot 1121)* **2,000.00+**



- 30 ★ **\$1 Deep Orange (Wet Printing)** A well centered mint block with rich colour associated with the scarcer early printing, showing Pyramid Guidelines in left margin, full original gum lightly hinged at centre. Virtually all known Pyramid Guide blocks are on the later dry printing, this is the first one wet printing we recall seeing and is quite possibly the **ONLY ONE KNOWN**. A great block destined for a serious collection, VF LH; catalogue value is irrelevant as it reflects the dry printing. (Unitrade 122b, 122iii) ex. *Fred Goodhelsen (June 2004, Lot 2338)* **Est. 5,000.00+**



- 31 ★ **\$1 Orange (Dry Printing)** A nicely centered mint block of four with Pyramid Guide in left margin, bright fresh colour and full original gum, VF NH. (Unitrade 122iii) **Est. 5,250.00**



- 32 ◎ **\$1 Orange (Dry Printing)** Used block of eight showing "R-GAUGE" imprint in right margin, well centered with bulk mailing Kingston Nov 1928 cancels and still retaining full OG. An elusive imprint multiple, VF; Unitrade attempts to value Fine centering only (Unitrade 122v) **Est. 750.00+**



- 33 ★ **3c Carmine, Die I (Wet Printing), Part Perforate Coil** A fresh and very well centered mint block imperforate horizontally, nearly complete "R-GAUGE" imprint in right margin, top left stamp with minor gum wrinkle, light stain in margin, very few exist, VF OG; ex. Ron Brigham (March 2015; Lot 774) (Unitrade 130aii) **4,000.00**



34



37

- 34 ★ **2c on 3c Carmine, Die I, One-Line Surcharge** Mint vertical pair from top right of sheet showing "R-GAUGE" imprint in right margin, surcharge dramatically misplaced resulting in a se-tenant pair with & without surcharge variety, full original gum, hinged on top stamp; a Fine and exceedingly rare imprint positional pair showing a striking surcharge variety. (Unitrade 139a + unlisted R-GAUGE imprint for the one-line surcharge provisional issue) **Est. 1,000.00+**



35



36

- 35 ★ **2c on 3c Carmine, Die I, One-Line Surcharge** A post office fresh mint positional block showing Pyramid Guide in left margin, nicely centered with pristine original gum, VF NH, scarce in such nice condition. (Unitrade 139iii) **2,000.00**
- 36 ◎ **2c on 3c Carmine, Die I, One-Line Surcharge** A nicely centered used block showing Pyramid Guide in left margin, lightly cancelled by Estevan MR 1 27 CDS postmarks; no doubt rare in used condition, VF; unpriced used in Unitrade. (Unitrade 139iii) **Est. 750.00+**
- 37 ★ **2c on 3c Carmine, Die I, One-Line Surcharge** Visually striking mint block of four with dramatically shifted surcharge (placed at top instead of at foot as issued) and showing Pyramid Guide in left margin, bright fresh colour and nicely centered, A rare combination block, VF NH (Unitrade 139iv) **3,000.00**
- 38 ★ **2c on 3c Carmine, Two-Line Surcharge** A lovely, fresh, well centered mint block with Pyramid Guide in right margin, LH on top left stamp only, VF (Unitrade 140ii) *(Illustrated on Website)* **600.00**
- 39 ★◎ **Balance of Pyramid & R-Gauge Multiples** Includes mint Pyramid Guidelines #109 block, #138 block of eight, #139 pair, #140 block (margin clipped); R-Gauge on #109 block, #138 mint AND used blocks, etc. F-VF *(Illustrated on Website)* **Est. 400.00+**





## LATHEWORK

### Type A on plates from January 1917 to March 1917



- 40 ★ **10c Plum** A wonderful plate "A7" strip of four, natural straight edge at right with pencil "Mch 31 / 19" date of acquisition by pioneer collector Major White, left three stamps showing superb and remarkable Type A lathework, **printing order number "934 F" visible underneath lathework** of third stamp. Unusually well centered with large margins, hinged on second stamp only, others are NH. A rare and appealing multiple ideal for exhibition, VF; cat. for the three lathework stamps. (Unitrade 116) **7,750.00**

Provenance: Robert Bayes (originally offered as a strip of five)



- 41 ★ **10c Plum** A precisely centered mint Plate A7 strip of three, natural straight edge at left with portion of guide arrow; right pair shows full strength Type A lathework with **very legible OTTAWA No-A7 plate imprint underneath**, also showing **double lathework** (5mm wide) below right stamp. The two end stamps are NH. A very attractive plate imprint lathework piece with radiant colour, VF LH; cat. for right pair. (Unitrade 116) **6,250.00**

Expertization: 2006 Greene Foundation certificate

Provenance: Clare Jephcott (June 1990; Lot 858)

- 42 ★ **10c Plum** A select mint block showing unusually complete full strength Type A lathework, well centered with rich colour, negligible gum bend on lower left stamp; top pair hinged, otherwise NH. A scarce and beautiful lathework multiple, VF OG / NH (Unitrade 116) **4,800.00**





- 43 ★ **10c Plum** Horizontal pair with amazingly deep rich colour, showing full strength Type A lathework, Fine+ NH (Unitrade 116) **3,200.00**



- 44 ★ **10c Brown Purple** A quite well centered mint strip of three, large margin at foot resulting in unusually full extra wide Type A lathework, showing **printing order "934F" number underneath lathework** below right stamp, F-VF OG and appealing (Unitrade 116) **2,850.00**



45



46

- 45 ★ **20c Deep Olive Green (Wet Printing)** A nicely centered mint block with deep colour, full strength Type A lathework - interrupted at right as found on earlier plates, mild hinging at top, faint natural gum skip at left, lower pair never hinged, VF (Unitrade 119c) ex. "*Lindemann*" collection **1,800.00**
- 46 ★ **20c Olive Green (Wet Printing)** Well centered with large margins and rich colour, showing full strength Type A lathework, VF hinged (Unitrade 119c) **600.00**



- 47 ★ **20c Olive Green (Wet Printing)** An impressive lower left mint strip of five, very well centered within noticeably large margins, some nibbed perfs at top mainly above third stamp, with fresh colour and showing unusually complete, full strength Type A lathework, **plate imprint "OTTAWA No. A5"** clearly shows **under the lathework** of left pair, strong **doubling** the whole length of sheet margin (20mm wide) below third stamp; hinged at both ends leaving middle three stamps NH. An important lathework piece showing both varieties, ideal for exhibition, VF OG / NH (Unitrade 119c) **6,250.00**



- 48 ★ **20c Dark Olive Green (Wet Printing)** An attractive lower right corner block with rich colour, well centered, large part original gum somewhat disturbed (mostly confined to lower pair), with full strength Type A lathework showing **double lathework** (11mm wide) below lower left stamp and **printing order "935F"** under lathework below lower right stamp; a scarce lathework multiple showing both varieties, VF (Unitrade 119c) **5,000.00**



- 49 ★ **20c Olive Green (Wet Printing)** A fresh, well centered strip of three showing full Type A lathework, **doubling** (5mm wide) below left stamp, which is particularly choice with large margins and quite possibly in the finest attainable condition, VF-XF NH (Unitrade 119c) **4,800.00**





- 50 ★ **20c Olive Green (Wet Printing)** Mint plate A5 strip of three, straight edge left with cutting arrow, pencil "4 July / 18" date of acquisition by pioneer collector Major K. H. White"; right pair with full Type A lathework. The centre stamp with "**No 5**" imprint underneath the lathework; right stamps with prominent **doubling** (18mm wide). Very well centered, LH on centre stamp only, natural gum bend on left stamp, the key right stamp is choice and never hinged. An outstanding lathework multiple, VF+; cat. for right pair only. (Unitrade 119c) ex. *Robert Chaplin (January 1989, Lot 793)*

3,700.00+



51

- 51 ★ **20c Olive Green (Wet Printing)** Mint plate "A4" block with natural straight edge and guide arrow at left, right block shows full strength Type A lathework with unusually prominent **doubling** of the lathework (16mm wide) below lower right stamp; top centre stamp hinged, others NH. An appealing and very scarce plate numbered lathework piece, F-VF; cat. as a block of four with doubling. (Unitrade 119c) ex. *"Lindemann" collection*

2,500.00+



52

- 52 ★ **20c Olive Green (Wet Printing)** A choice, well centered mint single with rich colour and showing an impressive **doubling** (complete length of margin) of full strength Type A lathework, hinged with partially disturbed OG; a striking variety, VF (Unitrade 119c)

2,000.00



53

- 53 ★ **20c Olive Green (Wet Printing)** A nice mint example with almost full strength Type A lathework, shows **doubling** through complete length of the margin, large part OG, F-VF (Unitrade 119c)

1,000.00



54



55



56



59



57



60

- 54 ★ **2c+1c Yellow Brown, Die II War Tax** An attractive plate "A33" block of eight from left edge of sheet; plate "A33" shown below stamp Position 91, almost full strength Type A lathework at right showing plate imprint "OTTAWA No 33" below centre pair and a remarkably strong **double lathework** variety at lower right. LH on second stamp in, all others NH including the key lathework strip of four. An outstanding block, F-VF (Unitrade MR4i) **2,250.00**



- 55 ★ **2c+1c Brown, Die II War Tax** A well centered mint block with lovely rich colour and full strength Type A lathework; folded vertically between pairs ending in split perfs at top, VF NH (Unitrade MR4) *(Illustrated on Page 22)* **750.00**
- 56 ★ **2c+1c Yellow Brown, Die II War Tax** A selected mint pair with brilliant fresh colour and Type A lathework (60% strength), well centered with full original gum, attractive, VF NH (Unitrade MR4i) Left stamp shows the end of a double lathework variety at left. *(Illustrated on Page 22)* **480.00+**
- 57 ★ **2c+1c Brown, Die II War Tax** Post office fresh mint block of eight from lower right of the sheet, showing plate "A40" and printing order "937 P" below Position 100, full strength Type A lathework below left three stamps including **very strong doubling** (12mm wide) below lower left stamp; beautiful colour and with full original gum; a choice and very scarce lathework multiple ideal for the specialist, VF NH (Unitrade MR4) *(Illustrated on Page 22)* **3,750.00**



- 58 ★ **2c+1c Yellowish Brown, Die II War Tax** Lower right mint strip of ten showing "A32" imprint below Position 91 and strong, full Type A lathework on others, the **imprint "OTTAWA No A32" and printing order "937M" are visible under the lathework** at Positions 92, 93 and 99 in addition to a subtle **double lathework** variety (18mm wide) below Position 94. Some perf separation between fifth and sixth stamps; fresh and well centered, three lathework stamps including the double lathework are NH, VF LH (Unitrade MR4) **3,000.00**
- 59 ★ **2c+1c Brown, Die II War Tax** A post office fresh mint pair with deep rich colour and full strength Type A lathework, showing strong **double lathework** 12mm wide located near centre, with full pristine original gum, scarce and F-VF NH; 2010 Greene Foundation certificate for a strip of four from which this pair originates. (Unitrade MR4) *(Illustrated on Page 22)* **2,000.00**
- 60 ★ **2c+1c Brown, Die II War Tax** A well centered mint block in a lovely bright shade, showing full strength Type A lathework with a **double lathework** variety (12mm wide) near centre; somewhat disturbed original gum, VF; cat. as hinged. (Unitrade MR4) *(Illustrated on Page 22)* **2,000.00**



- 61 ★ **2c+1c Yellowish Brown, Die II War Tax** Lower left edge of sheet mint strip of four showing "A31" imprint below Position 91 and strong, full Type A lathework on others, **imprint "OTTAWA No A31" visible under lathework** of centre pair, also shows a **double lathework** variety (10mm wide) below right stamp; hinged with large part OG. An attractive plate imprint multiple with both varieties, F-VF (Unitrade MR4i) **800.00+**



62



63

- 62 ★ **2c Dark Violet Postage Due on Medium Wove Paper (Wet Printing)** Mint vertical strip of four showing unusually complete, full strength Type A lathework; short perf on top stamp and overall disturbed OG, quite well centered and seldom encountered in such a strip, VF (Unitrade J2) **10,000.00**
- 63 ★ **2c Dull Violet Postage Due on Medium Wove Paper (Wet Printing)** Upper left mint Plate 3 imprint strip of three, full Type A lathework at foot, well centered and fresh with full original gum, faint gum line from a crystal mount, otherwise VF OG, an appealing plate number lathework piece. (Unitrade J2; cat. as two mint hinged lathework singles) **5,000.00**



64



65

- 64 ★ **2c Dark Violet Postage Due on Medium Wove Paper (Wet Printing)** A very attractive and reasonably centered mint block with deep rich colour, showing strong and full Type A lathework in left margin, couple small gum thins on top pair, F-VF (Unitrade J2) **3,500.00**
- 65 ★ **2c Violet Postage Due on Medium Wove Paper (Wet Printing)** Post office fresh mint single, shows full strength Type A lathework in left margin, pristine original gum, Fine NH (Unitrade J2) **2,500.00**



Type B on plates from March 1917 to October 1920



- 66 ★ 1c Green Lower left corner block of eight showing full strength Type B lathework, **JOIN variety** with slight overlap below lower left stamp, folded horizontally, fresh radiant colour and nicely centered, VF NH (Unitrade 104) **900.00**



67



68



69

- 67 ★ 1c Dark Yellow Green Mint block of four in a distinctive rich shade, nicely centered and showing full strength Type B lathework, VF NH; catalogue for normal shade. (Unitrade 104ii) **450.00**
- 68 ★ 1c Green (shade) A nicely centered mint block in an unusual dull shade of green - quite distinctive from the numerous other shades found on this particular stamp; light wrinkling in ungummed portion of selvage, showing full strength Type B lathework, VF NH; catalogue value for normal shade. (Unitrade 104 shade) **450.00**
- 69 ★ 1c Green An appealing mint block showing full strength Type B lathework, VF NH (Unitrade 104) **450.00**





70



71

- 70 ★ **1c Yellow Green** A superb mint single, very well centered with unusually large margins, showing full strength Type B lathework, XF NH; catalogue for normal shade. (Unitrade 104i) **180.00+**
- 71 ★ **1c Green** An exceptionally well centered mint single with large margins, full strength Type B lathework and full pristine original gum, XF NH (Unitrade 104) **180.00+**



- 72 ◎ **1c Green** Used lower right half pane of 50 stamps showing full strength Type B lathework, prominent **doubling** (8mm wide) below stamp Position 93, Chatham, Ont. / Duty Free Oct 6 1919 large circular datestamps, F-VF and appealing (Unitrade 104) **960.00**

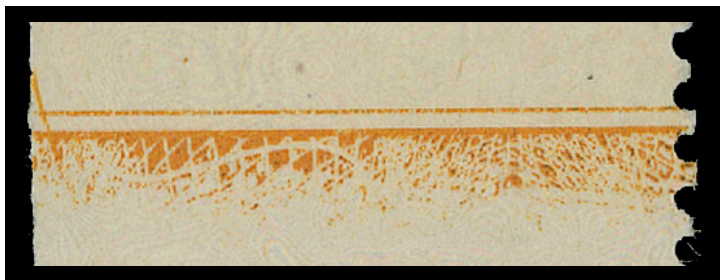
**TYPE B LATHEWORK ON ONE CENT YELLOW  
THE ONLY KNOWN EXAMPLE**



- 73 ★ **1c Yellow, Die I (Wet Printing)** A phenomenal mint example of utmost rarity - originally reported by well-known expert Stan Lum in 1999 at which time it had eluded collectors and experts for more than 80 years. A lower left corner example with natural straight edge, clearly showing large a portion of Type B lathework. To the best of our knowledge this is the **ONLY KNOWN EXAMPLE**. Furthermore it was missing from all well-known Admiral collections of the past. An essential piece for a complete mint lathework collection, Fine OG (Unitrade 105i) **Est. 5,000.00+**

Literature: Part 7 - Lathework, New Finds, by the "Yellow Peril" (Stan Lum) Maple Leaves, Vol. 26, No. 2.

Originally listed in the Unitrade specialized catalogue; however after 2002 it was erroneously removed by experts, for lack of evidence. Reliable sources tell us it will be reinstated in the next edition. It has also been announced that it will be the subject of a lengthy article in a forthcoming Admiral Log newsletter.







74



75

- 74 ★ **2c Carmine** An attractive lower right block of six, natural straight edge at right, showing unusually complete (scarce as such) full strength Type B lathework, nicely centered with large margins, VF NH; cat. as block of four only. (Unitrade 106) **450.00+**
- 75 ★ **2c Deep Red** An unusually choice mint block showing sharp, full strength Type B lathework, deep rich colour, well centered, VF+ NH; catalogue value for normal shade (Unitrade 106v) **450.00**
- 76 ★ **2c Carmine** An exceptional mint single with full strength Type B lathework, in a lovely deep shade of carmine, choice centering, XF NH (Unitrade 106) ex. "Lindemann" collection (Illustrated on Page 29) **180.00+**



- 77 ★ **2c Carmine** A marvelous lower left strip of twenty showing a full, nearly complete Type B lathework, **double lathework** variety is visible below Positions 92 and 98, nineteen stamps are NH. A great showpiece, Fine to Very Fine LH (Unitrade 106) **3,700.00**
- 78 ★ **2c Dark Carmine** A striking mint block with unusually complete, full strength Type B lathework, 17mm wide **doubling** below left stamp, faint natural gum skips. An elusive variety and scarce in a block, VF NH (Unitrade 106iii) ex. "Lindemann" collection (Illustrated on Page 29) **1,500.00**
- 79 ★ **2c Dark Carmine** A well centered mint block, natural straight edge at right, showing very prominent **doubling** (9mm wide) of full strength Type B lathework, lower pair and margins NH. An appealing block of this elusive variety, VF LH (Unitrade 106iii) (Illustrated on Page 29) **1,000.00**
- 80 ★ **2c Carmine** A nicely centered mint single large margins, showing distinctive 9mm wide **doubling** of full strength Type B lathework; unusually choice, VF NH and very scarce thus. (Unitrade 106) ex. "Crossings" (January 2010; Lot 362) (Illustrated on Page 29) **600.00+**
- 81 ★ **2c Carmine** A selected, fresh and well centered mint pair with full strength Type B lathework, 9mm wide **doubling** of the lathework below right stamp, VF LH (Unitrade 106) ex. "Lindemann" collection (Illustrated on Page 29) **520.00**





78



79



76



80



81



82 ★ **3c Yellow Brown (Wet Printing)** A superb mint block of eight in the scarce and distinctive shade, characteristic white original gum, showing complete and full strength Type B lathework, hinged on top centre pair only; a beautiful lathework multiple of this sought-after shade, VF OG / NH; cat. for common brown shade. (Unitrade 108b) ex. "Phillips" (June 2013; Lot 391) **900.00+**



- 83 ★ **3c Yellow Brown (Wet Printing)** Post office fresh mint block showing remarkably strong, full strength Type B lathework, a lovely block in choice condition, VF NH; cat. for more common shade. (Unitrade 108b) **675.00+**



84



86

- 84 ★ **3c Brown (Wet Printing)** A superb mint single with full strength Type B lathework, well centered and in a beautiful shade; a choice stamp, XF NH **225.00+**



- 85 ★ **3c Brown (Wet Printing)** A well centered strip of three with full strength Type B lathework and clearly visible **doubling** (7mm wide) below right stamp. A scarce and desirable multiple showing the variety, VF NH (Unitrade 108) ex. "Lindemann" collection **1,050.00**

- 86 ★ **3c Brown (Wet Printing)** Mint horizontal pair in a brighter shade of brown, showing full strength Type B lathework and prominent **doubling** (7mm) wide below left stamp, F-VF NH (Unitrade 108 shade) **750.00**





- 87 ★ **3c Brown (Wet Printing)** An impressive mint strip of three displaying the rare **Type B inverted lathework** - a clear, full strength impression; full original gum, right-hand stamp with minor fingerprint, both end stamps NEVER HINGED. The largest surviving strip with this lathework, which once graced two important collections of the past, Fine+ OG / NH; catalogued as two hinged and one NH single (Unitrade 108) **10,000.00**

Provenance: George Marler, September 1982; Lot 279

Robert Chaplin, January 1989; Lot 688 - erroneously identified as normal Type B lathework.



- 88 ★ **3c Brown (Wet Printing)** An exceptionally well centered mint pair showing the rarely seen **Type B inverted lathework** - a sharp, full strength impression that also shows a prominent JOIN variety below the left stamp; hinge remnant on left stamp, right stamp LH. A rare multiple and arguably the best centering one can hope to find, VF+ OG; ex. *Stan Lum* (Unitrade 108) **10,000.00**

After a lengthy search we were only able to locate the following Type B inverted lathework pieces: 1) a Fine NH block of four ex. "Bessemmer"; 2) a fine centered strip of three (offered in this sale), with two stamps NH ex. Marler, Chaplin; 3) a Fine LH pair ex. Brigham; 4) a Fine NH pair ex. Lussey, Goodhelpsen; 5) the pair offered here; 6) a hinged single ex. "Lindemann", 7) a mint NH single ex. "Crossings".





**THE FINEST MINT NH EXAMPLE  
DISPLAYING TYPE B INVERTED LATHEWORK**



- 89 ★ 3c Brown** A visually impressive corner margin mint single with gorgeous fresh colour, nicely centered with noticeably large margins and showing full strength impression of the rarely seen **Type B INVERTED lathe**work, with full unblemished original gum NEVER HINGED. Among the rarest Admiral lathe work and especially desirable in such superior quality, VF NH (Unitrade 108) **7,500.00**

Expertization: 2005 Greene Foundation certificate

Provenance: "Crossings", Eastern Auctions, January 2010; Lot 388 where it realized \$6,000 hammer (catalogue value then was \$3,300)

Quality: In our research for any comparables we were unable to find any single, even in the very few existing multiples, that remotely come close to the example offered here. Without question the finest known example.



90



92



91



93



94

- 90 ★ **7c Yellow Ochre** An impressive mint block of eight showing full strength Type B lathework, well centered, hinged on top row and selvage; an elusive large multiple, VF OG (Unitrade 113) **2,000.00**
- 91 ★ **7c Yellow Ochre** Lower left corner block in a remarkably bright shade, top left stamp with retouched vertical line in upper right spandrel, showing full strength Type B lathework, F-VF NH and very scarce. (Unitrade 113, 113iii) **1,800.00**
- 92 ★ **7c Yellow Ochre** Mint block with deep rich colour, all four stamps show the retouched vertical line in upper right spandrel, full strength Type B lathework; corner crease on upper left stamp and natural gum skip on upper right, F-VF NH, a very scarce block (Unitrade 113iii) ex. "Lindemann" collection **1,800.00**
- 93 ★ **7c Yellow Ochre** Lower left block with natural straight edge at left, showing unusually complete full strength Type B lathework, very well centered with large margins, hinge remnant on top pair, lower pair and margin NH, VF (Unitrade 113) **1,000.00**
- 94 ★ **7c Deep Olive Bistre** A choice mint single with lovely rich colour, full strength Type B lathework, well centered, VF NH (Unitrade 113a) **450.00**



**TEN CENT PLUM - ELUSIVE TYPE B LATHEWORK  
QUITE POSSIBLY THE LARGEST REMAINING BLOCK**



- 95 ★ **10c Plum** An outstanding mint block of six showing rare full strength Type B lathework, lovely rich colour and unusually well centered, the lower centre stamp is NH. Easily ranking among the most elusive lathework types, it was in fact missing from even the famous Marler collection. An excellent showpiece of high caliber, VF; cat. as three lathework singles. (Unitrade 116) **14,000.00**

Provenance: Stan Lum (September 2013; Lot 1190)

Our research indicates that the 10c plum Type B lathework is considerably scarcer than the more valuable 10c bistre brown Type D.





- 96 ★ **10c Brown Purple** A very attractive corner margin block in a lovely bright shade, showing unusually strong, full strength Type B lathework, well centered, folded horizontally between pairs. One of the scarcest of all lathework types - a very small number of multiples survive, VF LH; *ex. Robert Bayes (private treaty)* (Unitrade 116) **9,000.00**



- 97 ★ **10c Plum** A remarkable mint pair showing nearly full strength Type B lathework, well centered, left stamps Fine+ and right stamp superb with enormous margins. A rare multiple of which a mere few have survived, F-XF LH (Unitrade 116) **6,000.00**



- 98 ★ **10c Plum** A spectacular lower right margin single, well centered with large margins and dark rich colour and more importantly showing the very elusive Type B (40% strength) lathework; printer's ink spots on reverse of margin, VF NH (Unitrade 116) **6,000.00**



- 99 ★ **1c Yellow, Die I (Wet Printing), Perf Perforate Coil** A premium mint block of four imperforate horizontally, brilliant fresh colour and precise centering which is hard to find on these, showing unusually full strength Type B lathework. A very scarce multiple in superior quality, VF+ NH (Unitrade 126c) **5,250.00**



100



101

- 100 ★ **1c Yellow, Die I (Wet Printing), Part Perforate Coil** An attractive mint block of four imperforate horizontally, vivid colour, intact perforations on both sides and showing almost full strength Type B lathework and with full pristine original gum. NH and almost VF (Unitrade 126c) **3,500.00**
- 101 ★ **1c Yellow, Die I (Wet Printing), Part Perforate Coil** A well centered mint pair imperforate horizontally, deep rich colour and nearly full strength Type B lathework, VF hinged (Unitrade 126c) **1,600.00**



- 102 ★ **1c Yellow, Die I (Wet Printing), Imperforate** An impressive mint block of eight with Type B lathework of usual strength, tiny portion of guide arrow at left, brilliant fresh colour; a scarce large multiple, VF NH (Unitrade 136) **4,500.00**



104



103



105

- 103 ★ **1c Yellow, Die I (Wet Printing), Imperforate** An exceptionally fresh mint block with Type B lathework of usual strength (40%), large margined with full pristine original gum; choice, XF NH (Unitrade 136) **2,250.00**
- 104 ★ **1c Yellow, Die I (Wet Printing), Imperforate** Mint single with normal strength (40%) Type B lathework, VF NH (Unitrade 136) **600.00**
- 105 ◎ **1c Yellow, Die I (Wet Printing), Imperforate** Select example with normal strength Type B (40%) lathework, used with unobtrusive cancel, VF (Unitrade 136) **480.00**





106



107

- 106 ★ 1c Green War Tax A large margined mint single with full strength Type B lathework, pristine original gum, VF NH (Unitrade MR1) **180.00**
- 107 ★ 2c+1c Brown, Die II War Tax A selected, fresh, well centered mint block with unusually complete, full strength Type B lathework, LH on top right stamp, full original gum and appealing, VF LH / NH (Unitrade MR4) **500.00**



- 108 ★ 2c+1c Brown, Die II War Tax A beautiful mint block of eight in a bright pastel shade, with Type B (60% strength) lathework and showing a clear and distinct doubling of the lathework below lower left stamp, nicely centered with full original gum, never hinged. This is the first Type B double lathework variety we recall seeing, VF NH; currently unlisted (Unitrade MR4 + lathework variety) **Est. 2,500.00+**

A double variety on the 2c+1c brown War Tax stamp exists (and is listed) for Type A lathework and surprisingly on the ultra rare Type B inverted lathework.

**SPECTACULAR WAR TAX STRIP  
WITH THE RARE TYPE B INVERTED LATHEWORK**



- 109 ★ **2c+1c Brown, Die II War Tax** An outstanding horizontal strip of four from left edge of sheet, showing a very rare and unusually strong impression of **Type B inverted lathe-work**, guide arrow at left, shows a very prominent **DOUBLE LATHEWORK** variety (6mm wide) below third stamp; well centered with full original gum, LH on third stamp only leaving three NH. Only a handful of inverted Type B lathe-work exist and this example is quite possibly **THE ONLY ONE KNOWN WITH CLEAR DOUBLE LATHEWORK**. A beautiful strip in an excellent state of preservation and of the utmost rarity, VF showpiece (Unitrade MR4) **23,000.00**





- 110 ★ **2c+1c Brown, Die II War Tax** An impressive mint strip of three from right of sheet, displaying very rare full strength **Type B inverted lathework**, also shows a large portion of the guide arrow at right, deep rich colour and reasonably centered with just a faint trace of hinging on the left stamp, leaving right pair never hinged. A lovely multiple among the rarest of the entire Admiral issue and often missing from advanced collections, F-VF (Unitrade MR4) **10,000.00**



- 111 ★ **2c+1c Brown, Die II War Tax** An unused horizontal pair unused (no gum) showing strong, full strength **Type B inverted lathework**, lovely rich colour and quite well centered. A very rare lathework pair ideal for exhibition and with near VF centering. After extensive research we recorded only one other pair (*ex. Fred Goodhelpsen, November 2004; Lot 2348*), which is Fine OG with faults. (Unitrade MR4) **4,000.00**



112



113

- 112 ★ **2c+1c Brown, Die II War Tax** An unusually well centered example showing full strength **Type B inverted lathework**, hinged with small gum thins, rarely seen with only a few examples known, VF appearance (Unitrade MR4) *ex. "Lindemann" collection* **4,000.00**
- 113 ★ **2c+1c Brown, Die II War Tax** Remarkably fresh mint single with uniformly strong impression of the rare **Type B inverted lathework**, quite well centered with lovely rich colour and large part original gum. We are aware of only two other mint and one used single with inverted Type B lathework, among the rarest and most desirable Admiral lathework, F-VF LH (Unitrade MR4) **2,000.00**





- 114 ★ "14 Cents" on 7c Brown Excise Tax An appealing mint block from top left of sheet, showing full strength Type B inverted lathework, dramatic shifting of "14 Cents" resulting in two se-tenant vertical pairs with and without overprint, VF LH (Van Dam FX27b) Est. 500.00+



- 115 ★ "14 Cents" on 7c Brown Excise Tax Two mint blocks with full strength Type B inverted lathework in left margin; first a lower left corner margin block with "14 Cents" overprint at top and additional overprint in sheet margin; second block with "14 Cents" shifted horizontally resulting in "4 Cents" variety, VF LH (Van Dam FX27g, FX27h) Est. 400.00+



- 116 ★ "14 Cents" on 7c Brown Excise Tax A fresh, well centered mint block with full strength Type B inverted lathework in left margin, top left stamp with "14 Cents" omitted (only shows portion of "nts"), appealing and scarce, VF LH (Van Dam FX27) Est. 350.00+



### Type C on plates from March 1920 to January 1921



117



118

- 117 ★ **1c Yellow Green** Mint block of six in an attractive deep shade, small thin on upper left stamp, showing full strength Type C lathework; left block very well centered, VF LH; a very scarce lathework multiple, catalogued as a VF mint block and a fine NH single (Unitrade 104i) **2,800.00**
- 118 ★ **1c Yellow Green** An exceptionally fresh mint block showing full Type C lathework, LH on lower left stamp only, others and selvage are NH; an elusive block, Fine+ (Unitrade 104i) **1,000.00+**



119



120

- 119 ★ **1c Yellow Green** An impressive mint single with enormous margins and showing full strength Type C lathework, visually striking, VF OG JUMBO (Unitrade 104i) **800.00+**
- 120 ★ **1c Yellow Green** Fresh mint hinged pair showing full strength of the elusive Type C lathework, Fine OG (Unitrade 104i) **800.00**
- 121 ★ **1c Orange Yellow (Wet Printing)** An impressive mint corner margin strip of eighteen showing Type C lathework, lovely deep rich colour, nicely centered and with pristine original gum; very few such lathework strips remain intact, VF NH; cat. as four blocks of four. (Unitrade 105)  
(Illustrated on Page 43) **2,400.00**
- 122 ★ **1c Yellow, Die I (Wet Printing)** Well centered block, brilliant colour, nearly full Type C lathework, LH on top pair, otherwise NH; attractive and VF (Unitrade 105i) (Illustrated on Website) **400.00**
- 123 ★ **2c Dark Carmine** Well centered mint block of four with radiant colour displaying complete (scarce as such) full strength Type C lathework, lower pair and margins never hinged; pencil notation "July 27 / 22" in selvage with date of acquisition from Post Office by pioneer collection Major K. Hamilton White. A very scarce block, VF LH (Unitrade 106iii; catalogue value as hinged block only)  
*ex. Robert Bayes (private treaty 1996)* (Illustrated on Page 43) **2,400.00+**





121



123



126



124



125

- 124 ★ 2c Carmine A well centered mint horizontal pair with rich colour and full strength Type C lathework, scarce, VF LH (Unitrade 106) **2,000.00**
- 125 ★ 2c Carmine A superior mint single with appealing colour showing nearly full Type C lathework, full immaculate original gum. An elusive item, especially in such choice quality, worthy of the finest collection, VF+ NH; 1993 Greene Foundation cert. (Unitrade 106) ex. "Crossings" (January 2010; Lot 361) **1,500.00**
- 126 ★ 2c Carmine A scarce mint block showing full strength Type C lathework; light foxing visible on back only, hinged on top pair only; F-VF (Unitrade 106; catalogue value as hinged block only) **1,200.00**





**A SUPERB BLOCK WITH FULL STRENGTH  
TYPE C INVERTED LATHEWORK**



- 127 ★ 2c Carmine** A phenomenal block displaying unusually complete and full strength **Type C inverted lathework**, exceptionally fresh and well centered with full original gum. A very rare multiple in an excellent state of preservation; a mere few exist and we would not hesitate to rank this beautiful block as the finest known, VF+ LH (Unitrade 106) **Est. 10,000.00+**

Provenance: Robert Chaplin (January 1989; Lot 669)  
Robert Bayes, private treaty 1996

A VERY RARE LATHEWORK MULTIPLE DESTINED FOR A SERIOUS COLLECTION.



- 128 ★ **2c Carmine** A remarkable mint example of this rarely offered lathework - **Type C inverted**, full strength, with deep vibrant colour, well centered within large margins, faint hinge in margin only, stamp NEVER HINGED. Very few examples of this lathework exist - a great stamp ideal for exhibition, VF (Unitrade 106) **6,000.00**



- 129 ★ **2c Carmine** An extremely well centered mint single showing complete, full strength **Type C inverted lathework** - a very elusive piece ideal for an advanced collection, with full. Among the toughest latheworks to find and especially desirable with such superior centering and freshness, XF LH; 1992 Greene Foundation cert. (Unitrade 106) ex. "Crossings" (January 2010; Lot 360) **4,000.00+**



- 130 ★ 2c Deep Green (Wet Printing)** An unusually well centered mint pair with gorgeous colour and impression, showing nearly full Type C lathework; a very scarce multiple and especially desirable in such nice quality, VF+ LH (Unitrade 107i) ex. "*Lindemann*" collection **600.00**



131



132



133

- 131 ★ 2c Green (Wet Printing)** A well centered mint single with vibrant colour, showing nearly full Type C lathework; a nice stamp, VF NH (Unitrade 107ii) **450.00**
- 132 ★ 2c Yellow Green (Wet Printing)** An extremely well centered mint example with large margins, showing nearly complete Type C lathework, XF LH (Unitrade 107) **300.00+**
- 133 ★ 2c Yellow Green (Wet Printing)** A choice mint single showing nearly full strength Type C lathework, well centered with deep rich colour, VF VLH (Unitrade 107) **300.00**



- 134 ★ 3c Brown (Wet Printing)** Mint strip of twenty from right edge of sheet, showing an outstanding full impression of Type C lathework; **traces of an imprint are visible below the lathework** at Positions 93-94. The lower row is nicely centered, mint OG with overall gum disturbance which in no way detracts from its overall remarkable appearance. Very few lathework strips can exist and this is certainly the strongest impression of Type C one can hope for on this stamp, F-VF (Unitrade 108) **3,750.00**

Unitrade only lists the Type C lathework at 40% strength on this stamp. Furthermore, full strength is not recorded on Glen Lundeen's exhaustive listing - only 50% and 75% are recorded.





- 135 ★ 3c Brown (Wet Printing)** An impressive lower left corner block showing amazingly complete, full strength Type C lathework; most surviving examples of this lathework show only about 40% strength, very well centered and choice with lovely rich colour and full original gum, never hinged. One would have to search far and wide to find a similar multiple; in fact Glen Lundeen's website listing does not attempt to list 100% strength, another indication of its rarity, VF NH; 1996 Greene Foundation cert. (Unitrade 108) **Est. 2,500.00+**



136



139

- 136 ★ 3c Brown (Wet Printing)** A premium mint example showing the rarely seen full strength Type C lathework; overall quality is impressive and much superior to what have seen; well centered with large margins and brilliant colour. A great item for the Admiral specialist, VF VLH; cat. reflects 40% strength only. (Unitrade 108) *ex. "Lindemann" collection* **Est. 500.00+**

## Eastern Auctions Ltd.

In our Mail Auction, we offer 3000-5000 individually described and profusely illustrated lots approximately every six weeks. There is NO BUYER'S COMMISSION. We make every effort to present material for every collecting interest and budget. Large lots and individual stamps from worldwide countries and areas are always offered. Contact us to receive a complimentary catalogue of our next Mail Sale.

Toll Free in North America  
1(800) 667-8267

P.O. Box 250 - Bathurst - NB - E2A 3Z2 - Canada  
Tel 1(506) 548-8986 - Fax 1(506) 546-6627  
email [easternauctions@nb.aibn.com](mailto:easternauctions@nb.aibn.com)  
website [www.easternauctions.com](http://www.easternauctions.com)





**AN EXCEEDINGLY RARE LATHEWORK BLOCK  
ONE OF ONLY TWO REPORTED  
DISPLAYING THE ULTRA RARE TYPE C INVERT LATHEWORK**



- 137 ★ 3c Dark Brown (Wet Printing)** A spectacular unused block of four showing an extremely rare lathework - the **Type C INVERTED**; on the short-list of the very rarest Admiral lathework, in fact only one other block is known (ex. George Marler September 1982, unknown provenance December 1990 Maresch sale, "Lindemann" collection), a mint NH and used single are also known and both are offered in this auction. Light pencil notation in margin, without gum, displays dark rich colour on fresh paper and is well centered with the key lower pair having noticeably large margins; a remarkable block, VF; (Unitrade 108ii) ex. *Stan Lum (September 2013; Lot 1172)* **15,000.00**

**ONE OF THE RAREST ADMIRAL LATHEWORKS  
THE TYPE C INVERTED ON THREE CENT BROWN  
QUITE POSSIBLY THE ONLY EXISTING MINT NH SINGLE**



- 138 ★ 3c Dark Brown (Wet Printing)** A fabulous corner margin example displaying one of the rarest examples of lathework - the **Type C INVERTED**, plainly visible and extending in the right margin, with rich colour and full pristine original gum, NEVER HINGED. A key item often missing from even the most advanced Admiral collections, F-VF NH, a great showpiece. (Unitrade 108ii) **7,000.00+**

Expertization: 2005 Greene Foundation certificate

Provenance: "Crossings", Eastern Auctions, January 2010; Lot 399 where it realized \$6,750 hammer (catalogue value then was \$4,125)

After extensive research for other mint examples, we were only able to find a mint block (*ex. Marler, "Lindemann" collections*) an unused block (*ex. Stan Lum*), latter being offered in this sale. No other mint single was found.

We would like to add Glen Lundeen's comment on Admiral lathework: "Rarity does not seem to totally control the price of lathework. For example, an example of the 50c black with a trace of Type D lathework will sell for more than an example of the 3c brown with Type C inverted lathework. However, the 3c brown is far more rare than the 50c."

A CHOICE EXAMPLE OF THIS VERY RARE LATHEWORK IDEAL FOR A SERIOUS ADMIRAL COLLECTION.

- 139 ☉ 3c Brown (Wet Printing)** A remarkable used single with natural straight edge at left, showing an unusually strong impression of **the exceedingly rare Type C INVERTED lathework**; light machine wavy-line cancellation, quite well centered and in sound condition. Quite possibly the only known used example of this lathework rarity, F-VF *(Illustrated on Page 47)* **2,800.00+**

When compared to the very few surviving examples we were able to locate - two mint blocks of four (one of which has no gum) and a mint NH single, **this used example displays the strongest and most complete Type C inverted lathework available**. A great item for the Admiral specialist.





**AN OUTSTANDING MINT NEVER HINGED BLOCK  
WITH COMPLETE, FULL STRENGTH TYPE C LATHEWORK**



- 140 ★ 10c Brown Purple** A superb mint block with unusually complete full strength Type C lathework, very well centered with large margins, exceptionally fresh and never hinged. It would be virtually impossible to find a finer block, XF NH; 1995 Greene Foundation certificate (Unitrade 116) **9,000.00+**



- 141 ★ **10c Brown Purple** Mint block with strong, unusually full Type C lathework, shows prominent retouched / re-entered horizontal guidelines above the lathework at lower left; light fingerprint on gum at top right, Fine NH. (Unitrade 116) **6,000.00**

Under magnification the variety appears at first glance to be doubling of the lathework; however, the lathework below does not show any evidence of this. A great item for the specialist.



142



143

- 142 ★ **10c Brown Purple** Mint block in a brighter shade than normally seen, usual strength (80%) Type C lathework, small minor gum crease at top left, Fine NH (Unitrade 116) **6,000.00**
- 143 ◎ **10c Plum** Large margined used example showing unusually complete full strength Type C lathework, bright fresh colour and nicely centered, VF and scarce. (Unitrade 116) **2,000.00**



### Type D on plates from November 1920 to December 1924



144



145



146



147



148

- 144 ★ **1c Yellow, Die I (Dry Printing)** An appealing mint block in premium condition, very well centered and in a brighter shade than normally encountered, showing unusually full strength Type D lathework; superior to most known blocks, XF NH; catalogue is for 80% strength. (Unitrade 105f) **1,800.00+**
- 145 ★ **1c Yellow, Die I (Dry Printing)** An appealing mint block in an unusual dark shade and showing unusually full strength Type D lathework, Fine+ NH; catalogue value reflects 80% strength. (Unitrade 105f) **1,200.00+**
- 146 ★ **1c Yellow, Die I (Dry Printing)** A large margined mint pair with remarkably complete, full strength Type D lathework ending clear of the edge at foot, unusual as such, VF LH (Unitrade 105f) **800.00**



- 147 ★ **1c Yellow, Die I (Dry Printing)** A choice, centered mint single with rich colour, unusually full strength Type D lathework; a nice example, VF NH (Unitrade 105f) *(Illustrated on Page 52)* **600.00**
- 148 ★ **1c Orange Yellow, Die I (Wet Printing)** An appealing mint strip of four with deep vibrant colour, well centered with large margins, showing unusually strong and nearly full Type D inverted lathework, VF NH (Unitrade 105) *(Illustrated on Page 52)* **1,200.00**



149



151

- 149 ★ **1c Orange Yellow, Die I (Wet Printing)** A precisely centered mint block showing unusually full Type D inverted lathework; minute gum inclusion on lower left stamp, a lovely VF NH block; catalogue value is for 80% strength lathework. (Unitrade 105) **750.00**
- 150 ★ **1c Orange Yellow, Die I (Wet Printing)** A fresh mint block showing unusually full Type D inverted lathework, F-VF OG; catalogue value for normal 80% strength. (Unitrade 105) *ex. "Lindemann" collection* **250.00+** *(Illustrated on Website)*
- 151 ★ **1c Orange Yellow, Die I (Wet Printing)** A very well centered mint block with deep colour, faint impression but with enough features shown to identify **Type D1 lathework**; a very scarce block, VF NH; *ex. "Lindemann"* originally a strip of 20 from which this block was taken; this being one of the better centered blocks. (Unitrade 105) **2,250.00**



152



153

- 152 ★ **1c Orange Yellow, Die I (Wet Printing)** An appealing corner margin single with St. Thomas, Ontario Style 1 precancel showing malformed "O" in "ONT.", quite clear **Type D1** precancel - 50% strength and better than normally encountered, VF LH (Unitrade 105) **Est. 500.00+**
- 153 ★ **1c Orange Yellow, Die I (Wet Printing)** Corner margin example with St. Thomas, Ontario Style 1 inverted precancel, well centered with deep colour, lower strength but with key elements of **D1 lathework** present, scarce, VF LH (Unitrade 105) **Est. 400.00+**



**THE EXCEEDINGLY RARE TYPE D1 INVERTED LATHEWORK  
A BRILLIANT FRESH MINT NH STRIP  
DISPLAYING THE LONGEST UNINTERRUPTED LATHEWORK**



- 154 ★ 2c Yellow Green (Wet Printing)** An extraordinary mint horizontal strip of four showing the exceedingly rare **Type D1 inverted** lathework (from Plate 161); strong impression and clearly showing the characteristic traits, well centered with both end stamps being particularly so, all stamps are NEVER HINGED. This multiple demonstrates the longest uninterrupted lathework known to exist in private hands. One of the highlights of this important collection and destined for a world-class collection; centre pair Fine NH and end stamps VF NH (Unitrade 107) **20,000.00**

Expertization: 2011 Greene Foundation certificate

Census:

A total of seven pieces (as of January 2018) are known to exist with Type D1 inverted lathework:

- 1) Strip of four mint NH originating from the McKay Collection (sold privately), bought by Smallman and now **offered here as Lot 154**. The largest known strip of this lathework.
- 2) A lower right corner block of four, off-centered, hinged at top. Very weak impression (20% strength); from the McKay Collection (sold privately). Illustrated in Admiral Log Vol. XIII No. 1 December 2013, page 99.
- 3) A fine NH centered block of four (Firby sale, December 2009; Lot 619 – described then as Type D inverted lathework). Lathework impression somewhat weak.
- 4) A lower right corner block of six (2x3), centered to top left – Fine mint, top two stamps LH. Illustrated in Admiral Log Vol. XIII No. 1 December 2013, page 101.
- 5) Well centered mint hinged single (small marginal fault at right) with full strength lathework; ex. Stan Lum. Once part of a block of five – now a single and a block of four (see item 7).
- 6) A fine mint single, centered high, disturbed / toned gum; lathework strength about 50%. Illustrated in Admiral Log Vol. XIII No. 1 December 2013, page 101.
- 7) Superb mint NH lower left corner block of four from LR pane showing full strength of the lathework; ex. Stan Lum (September 2013; Lot 1164). **Offered here as Lot 155.**

**THE FINEST EXISTING LATHEWORK PIECE  
DISPLAYING THE IMMENSELY RARE TYPE D1 INVERTED LATHEWORK**



- 155 ★ 2c Yellow Green (Wet Printing)** A spectacular mint block from left edge of the sheet, displaying the exceedingly rare **Type D1 inverted**, a complete and strong impression. This beautiful block is superbly centered with noticeably large margins, lovely bright fresh colour and full unblemished original gum, NEVER HINGED. A fabulous lathework multiple, the finer by far of only four existing blocks (see census below Lot 154) and one of the greatest rarities of all Admiral lathework, VF+ NH (Unitrade 107) ex. *Stan Lum (September 2013; Lot 1164)* **13,500.00**





- 156 ★ **2c Yellow Green (Dry Printing)** A superb mint block of the dry printing with brilliant fresh colour and showing complete and full strength Type D lathework, lower pair and margins NEVER HINGED. A very rare multiple that is especially desirable in such choice quality - ideal for a serious Admiral collection, XF LH / NH (Unitrade 107iv) **6,000.00**



- 157 ★ **2c Yellow Green (Dry Printing)** Lower right corner pair showing a rare combination of dry printing and Type D full strength lathework, exceptionally fresh and very scarce, Fine LH (Unitrade 107iv) **2,000.00**
- 158 ★ **2c Green (Dry Printing)** Lower left block of four of the very elusive dry printing showing nearly full Type D lathework, in a darker shade when compared to the few existing pieces we have seen in the past; Edmonton, Alberta city precancels, small corner crease entirely confined to lower selvage. A very rare multiple, F-VF NH (Unitrade 107e; cat. \$5,000 for mint NH block)

(Illustrated on Page 57) **Est. 1,000.00+**



158



159



161



162

- 159 ★ **2c Green (Wet Printing)** A nicely centered mint block of six showing complete and unusually strong Type D lathework, it is rare to see superior strength Type D lathework on the wet printings; hinged on top centre stamp leaving five and sheet margins NH. A beautiful multiple, VF; catalogue value reflects lathework of inferior strength. (Unitrade 107i) ex. "*Lindemann*" collection **900.00**



- 160 ★ **2c Green on Medium Wove Paper (Wet Printing)** A post office fresh mint strip of twenty from lower right pane showing Type D inverted lathework, a stronger impression than normally encountered, LH on left pair with straight edge and in margin at right, the remaining eighteen stamps are NH. A remarkable strip in excellent state of preservation and unusually well centered, left block of four Fine LH, remaining strip of sixteen is VF NH (Unitrade 107) **3,250.00**





- 161 ★ **2c Deep Green on Thin Paper (Wet Printing)** A reasonably centered mint block of six showing normal strength (40%) Type D inverted lathework, hinged on top row, lower stamps and margins NH, F-VF (Unitrade 107a) *(Illustrated on Page 57)* **1,500.00**

- 162 ★ **2c Dark Yellow Green (Wet Printing)** An exceptionally fresh and well centered mint block of six, natural straight edge at right, showing normal strength Type D inverted lathework, lovely rich colour, VF LH (Unitrade 107) *(Illustrated on Page 57)* **800.00**



163



164

- 163 ★ **2c Dark Yellow Green (Wet Printing)** An attractive and nicely centered mint pair with stronger than usual Type D inverted lathework (normally 50% strength), VF NH (Unitrade 107) **600.00**

- 164 ★ **2c Deep Yellow Green (Wet Printing)** Lower corner margin pair on THICK PAPER showing weaker strength Type D inverted lathework, right stamp is NH; pencil notation in left margin. An unusual item ideal for an advanced collection, Fine LH; 2011 Greene Foundation cert. (Unitrade 107 variety) *ex. Harry Lussey (June 1981; Lot 1168)* **Est. 500.00+**

- 165 ★ **2c Dark Yellow Green (Wet Printing)** A nicely centered mint single showing well-above average strength Type D inverted lathework (normal is 50% strength), VF NH (Unitrade 107) *(Illustrated on Page 59)* **300.00+**



166



167

- 166 ★ **3c Brown (Dry Printing)** A post office fresh and well centered mint block with very clear, full strength Type D lathework; minute natural gum inclusion on top left stamp, a scarce block, VF NH (Unitrade 108c) **2,250.00**

- 167 ★ **3c Brown (Wet Printing)** An impressive mint block showing unusually complete and uniformly strong Type D lathework, rarely found on the wet printings; a beautiful block, VF NH; cat. for 60% strength (Unitrade 108) **1,200.00+**





165



168



169



171

- 168 ★ **3c Brown (Dry Printing)** An attractive, well centered mint single with full strength Type D lathework, seldom seen, VF NH (Unitrade 108c) **750.00**
- 169 ★ **3c Brown (Wet Printing)** A pristine, fresh and well centered mint single showing normal strength Type D (60%) lathework, VF NH (Unitrade 108) **450.00**



- 170 ★ **3c Brown (Wet Printing)** A remarkable corner margin mint block of eight with strong, full strength Type D inverted lathework, amazing rich colour, a few perfs separated at foot, a choice and very seldom seen large multiple, VF NH (Unitrade 108) **2,700.00**
- 171 ★ **3c Brown (Wet Printing)** A well centered mint block from lower left edge of the sheet with Type D inverted lathework (60% strength), portion of guide arrow at left, brilliant fresh colour and well centered, VF NH (Unitrade 108) **1,350.00**



- 172 ★ **3c Brown (Wet Printing)** Lower left corner block of six on a distinctive **thicker paper** (0.0045" thick - not counting the gum) with Type D inverted lathework - an unusual lesser strength not normally found; an interesting piece for the specialist, F-VF NH; cat. for normal lathework on regular wove paper. (Unitrade 108ii + variety) **1,200.00**



173



174

- 173 ★ **3c Brown (Wet Printing)** An appealing lower left corner margin block showing a strong and nearly full impression of Type D inverted lathework, fabulous colour, very well centered, LH on top left stamp only, otherwise never hinged, VF and choice (Unitrade 108) **900.00**
- 174 ★ **3c Brown (Wet Printing)** A very well centered mint block showing full strength Type D inverted lathework, lower pair and margin are NH, VF LH (Unitrade 108) **900.00**
- 175 ★ **3c Dark Brown (Wet Printing)** A most impressive large margined horizontal pair in a distinctive dark shade, showing complete, full strength Type D inverted lathework, well centered and relatively lightly hinged. A beautiful pair, VF; cat. value for normal brown shade. (Unitrade 108ii)  
(Illustrated on Page 61) **600.00**
- 176 ★ **3c Brown (Wet Printing)** A selected, fresh and nicely centered mint single with full strength Type D inverted lathework, VF NH (Unitrade 108)  
(Illustrated on Page 61) **450.00**





175



178



176



177

- 177 ★ **3c Brown (Wet Printing)** A choice mint single with full strength Type D inverted lathework, well centered, XF VLH (Unitrade 108) **300.00+**
- 178 ★ **3c Brown (Wet Printing)** A brilliant fresh mint pair with unusually clear, full strength Type D inverted lathework, Toronto Style 7 inverted precancel, left stamp without period after "ONT" variety, F-VF NH and appealing (Unitrade 108) **Est. 250.00+**



- 179 ★ **3c Carmine, Die I** A selected mint block of eight with complete Plate 126 imprint and full strength Type D lathework, beautiful colour, well centered, LH on top centre pair only, VF and appealing. (Unitrade 109) **700.00**





180



183

- 180 ★ 4c Olive Bistre (Wet Printing)** A precisely centered mint block showing normal (80%) strength Type D lathework, radiant colour and full pristine original gum, XF NH (Unitrade 110) ex. "Lindemann" collection **1,350.00**



181



182



184

- 181 ★ 4c Golden Yellow (Wet Printing)** Mint example in the distinctive colour showing exceptionally strong, full Type D UPRIGHT lathework - a most unusual combination of lathework strength and shade ideal for the specialist, Fine OG (Unitrade 110c) **Est. 750.00+**

Interestingly enough, Type D lathework on any shade of the 4 cent Admiral is generally of lesser strength. All other golden yellow lathework pieces we have seen have type D inverted lathework.

- 182 ★ 4c Olive Bistre (Wet Printing)** A selected corner margin pair, very well centered with rich colour and showing unusually strong, full Type D lathework - scarce as such, VF LH; cat. is for lesser strength lathework. (Unitrade 110) **600.00+**
- 183 ★ 4c Olive Bistre (Wet Printing)** Mint block from lower right edge of sheet, showing portion of guide arrow, showing superior full strength Type D lathework, seldom encountered on this denomination and worth a substantial premium; F-VF LH; cat. is for lesser strength. (Unitrade 110) ex. *George Marler (September 1982; Lot 313)* **450.00+**
- 184 ★ 4c Olive Bistre (Wet Printing)** A fresh, nicely centered mint single showing scarce full strength Type D lathework (allegedly only 1 in 10 shows full strength), VF NH (Unitrade 110) **450.00**



- 185 ★ 4c Deep Olive Bistre (Wet Printing)** Fabulous mint strip of ten from lower left pane with pre-perforated paper fold, showing Type D inverted (40% strength) lathework, amazingly deep colour and unusually well centered for a complete strip, four stamps are hinged in the margin only, six are NH. A remarkable strip in excellent state of preservation, VF OG / NH (Unitrade 110) **5,200.00**



- 186 ★ 4c Olive Bistre (Wet Printing)** A fresh mint strip of ten from lower left pane showing Type D inverted (40% strength) lathework; folded vertically between fifth and sixth columns and a few nibbed perfs on position 91, F-VF NH, a rare intact lathework strip. (Unitrade 110) **4,000.00**



- 187 ★ 4c Olive Yellow** A striking mint block of twelve displaying unusually complete, full strength Type D inverted lathework - a reported ratio of 1 in 20 has 100% strength; LH on top left and top right pairs and in selvedge below centre block, others NH. We would be surprised if a larger multiple exists. A remarkable block ideal for exhibition, VF; cat. is for lesser strength (40%) lathework. (Unitrade 110b) **3,600.00+**





188



189

- 188 ★ **4c Golden Yellow** A beautiful mint block showing strong, full strength Type D inverted lathework, quite well centered and with full pristine original gum, never hinged. A rare and attractive lathework multiple, F-VF NH; listed in Unitrade but currently unpriced. (Unitrade 110c) **Est. 2,000.00+**
- 189 ★ **4c Olive Yellow** Very well centered mint block in a lovely bright shade, showing unusually clear, full strength Type D inverted lathework - a reported ratio of 1 in 20 show 100% strength lathework; lower pair and margin never hinged. Visually striking and desirable, VF; cat. is for 40% strength lathework. (Unitrade 110b) **1,200.00+**



- 190 ★ **4c Golden Yellow** An appealing mint block with radiant colour and bold impression characteristic of this scarce shade, displaying impressive full strength Type D inverted lathework, well centered. The golden yellow shade with lathework is listed in the Unitrade; it is currently unpriced but should command a sizeable premium over the normal shade, F-VF LH (Unitrade 110c) *ex. "Lindemann" collection* **Est. 750.00+**





191



192



193

- 191 ★ **4c Olive Yellow** An attractive mint single in a distinctive bright shade, showing a superb, strong impression of Type D inverted lathework - a reported ratio of 1 in 20 show 100% strength lathework so this would command a substantial premium, a great item for the Admiral enthusiast, VF NH; cat. is for 40% strength only. (Unitrade 110b) **600.00+**
- 192 ★ **4c Olive Bistre** An attractive corner margin single with unusually strong, full Type D inverted lathework, VF LH; cat. is for lesser (40%) strength. (Unitrade 110) ex. "*Lindemann*" collection **400.00+**
- 193 ★ **4c Olive Bistre** A choice mint example with normal strength Type D inverted lathework, faintest trace of hinging, XF VLH (Unitrade 110) **400.00**



194



195

- 194 ★ **5c Rose Violet (Wet Printing)** An appealing mint block showing retouched vertical frameline in upper right spandrel, distinctive colour and strong impression of Type D lathework; lower pair is NH, VF; cat. for normal shade and 40% strength lathework (Unitrade 112iii) **1,000.00**
- 195 ★ **5c Grey Violet (Wet Printing)** Mint block of four from left edge of the sheet, showing unusually strong and nearly full strength Type D lathework; couple nibbed perfs and faint hinging on top pair, lower pair is NH. A striking shade / lathework combination, VF; cat. for common violet shade with lesser strength lathework. (Unitrade 112i) **700.00**



196



199

- 196 ★ **5c Grey Violet (Wet Printing)** A remarkable mint pair with a deeper impression than normally found, well centered and showing unusually strong and full strength Type D lathework, VF LH; cat. is for the normal shade with lesser strength lathework (Unitrade 112i) **480.00+**



- 197 ★ **5c Violet on Medium Wove Paper (Wet Printing)** Lower left mint strip of ten stamps showing Type D inverted (80% strength) lathework, six stamps OG (two have hinge thins, not counted) leaving four NH. An elusive lathework and no doubt rare as an intact strip, Fine. (Unitrade 112) **4,800.00**



198



201

- 198 ★ **5c Rose Violet (Wet Printing)** An elusive mint block showing complete, full strength Type D inverted lathework, lovely bright colour, Fine+ NH (Unitrade 112ii) *ex. "Lindemann" collection* **1,800.00**
- 199 ★ **5c Violet on Thin Paper (Wet Printing)** Brilliant fresh horizontal strip of three showing normal strength (40%) Type D inverted lathework, left stamp particularly well centered, F-VF NH (Unitrade 112a; catalogue as one VF NH single and two Fine NH singles with lathework) **1,050.00**





200



204

- 200 ★ **5c Rose Violet (Wet Printing)** A nicely centered mint single showing full Type D inverted lathework, hinged in margin, stamp NH, VF (Unitrade 112ii) **800.00+**
- 201 ★ **5c Violet (Wet Printing)** A beautiful mint block with **retouched vertical frameline in upper right spandrel**, displaying amazingly rich colour and a superb bold impression of Type D lathework - most unusual for this. In our opinion, under-catalogued for such a noteworthy lathework multiple, Fine+ LH (Unitrade 112iii) *(Illustrated on Page 66)* **500.00+**



202



203

- 202 ★ **5c Violet on Thin Paper (Wet Printing)** A scarce mint block showing unusually strong (40%) Type D inverted lathework, lightly hinged in selvage, all stamps are NH, F-VF (Unitrade 112a) **500.00+**
- 203 ★ **7c Red Brown (Wet Printing)** A choice, well centered mint block with usual strength Type D (40%) lathework, VF NH (Unitrade 114b) **600.00**
- 204 ★ **7c Red Brown on Thin Paper (Dry Printing)** A quite well centered example showing usual strength Type D (40%) lathework, F-VF LH, scarce (Unitrade 114iii) **450.00**





205



209

- 205 ★ 10c Light Blue (Wet Printing)** An impressive mint strip of three in a very distinctive bright shade, displaying superb and **rarely seen full strength Type D lathework**, of which few multiple can be matched, fresh with full original gum. A fabulous lathework piece perfect for a serious Admiral collection, Fine NH (Unitrade 117ii) *ex. Robert Chaplin (January 1989; Lot 775)* **4,800.00**

No attempt has yet been made to record full strength (100%) lathework on the comprehensive lathework listing compiled by Glen Lundeen, a clear indication of its rarity.



206



207

- 206 ★ 10c Blue (Wet Printing)** A post office fresh mint block showing superb and **rarely seen full strength Type D lathework**, brilliant fresh colour, faint hinge on top left stamp only. A beautiful plate multiple ranking among the best, F-VF; cat. as two NH singles; 1992 Greene Foundation cert. (Unitrade 117) **3,200.00**
- 207 ★ 10c Blue (Wet Printing)** A post office fresh mint block showing superior Type D lathework (80% strength), very seldom encountered as such, hinge remnants on top pair, lower pair and margin with pristine original gum, never hinged. A beautiful and desirable block, F-VF; cat. as two NH singles. (Unitrade 117) **3,200.00**



- 208 ★ **10c Blue (Dry Printing)** A brilliant fresh and well centered lower left corner block of eight showing a very nice impression of Type D lathework (about 50% strength); negligible natural gum bend at lower left, a spectacular lathework multiple, VF NH (Unitrade 117a) ex. "Lindemann" collection **3,000.00**

- 209 ★ **10c Blue (Wet Printing)** A well centered mint pair with bright fresh colour, showing regular strength (40%) Type D lathework; minute perf soak at top left, VF NH (Unitrade 117)

(Illustrated on Page 68) **1,800.00**



210



211

- 210 ★ **10c Light Blue (Wet Printing)** A beautiful mint block with Type D (60% strength) lathework, stronger impression than usual, LH at top only; a lovely block in a distinctive shade, VF LH / NH; cat. for normal blue shade and lesser strength (40%) lathework. (Unitrade 117ii) ex. "Lindemann" collection **1,500.00**

- 211 ★ **10c Blue (Dry Printing)** A nicely centered mint block with Type D lathework (30% strength), VF NH (Unitrade 117a) **1,500.00**





212



213



214

- 212 ★ **10c Blue (Wet Printing)** A large margined example with outstanding Type D lathework - the strongest possible impression one can hope for and rarely seen as such, Fine+ hinged (Unitrade 117) ex. "Lindemann" collection **800.00+**
- 213 ★ **10c Light Blue (Wet Printing)** A choice mint single with normal strength (40%) Type D lathework, nicely centered with noticeably large margins, VF hinged (Unitrade 117ii) **600.00**
- 214 ★ **10c Blue (Dry Printing)** A very well centered mint single with normal strength Type D (40%) lathework, radiant fresh colour, VF LH (Unitrade 117a) **400.00**



- 215 ◎ **10c Blue (Wet Printing)** Vertical strip of three with Toronto Style 10 precancel, showing the exceedingly rare Type D inverted - low strength but reveals enough traits to ascertain. Among the rarest Admiral lathework - only three pieces (a mint single, a mint block and a used single) have been recorded, Fine; listed but still unpriced. (Unitrade 117) **Est. 750.00+**



**A CHOICE MINT BLOCK OF THE SOUGHT-AFTER  
TEN BISTRE BROWN TYPE D LATHEWORK**



- 216 ★ 10c Bistre Brown** A beautiful mint block of this lathework rarity, well centered with bright colour and showing very clear, full strength Type D lathework, LH on top pair and minute disturbance on lower pair of no importance; a wonderful block on everyone's wish-list of Admiral lathework, VF OG (Unitrade 118) ex. "*Lindemann*" collection **13,000.00**

Eight blocks have been recorded in the exhaustive census (see Admiral Log's Volume 10, Number 1 - August 2006). The centering and strength of the lathework on this block, judging from illustrations in the census, ranks it in the top half. It is interesting to note that no block exists in NH condition.



- 217 ★ **10c Bistre Brown (Dry Printing)** An exceptional mint single, uniformly strong Type D lathework, well centered with wide margins. A wonderful example of this lathework rarity, VF LH (Unitrade 118) **5,000.00**

A total of 8 mint singles have been recorded in the census. Only three (including this example) have very fine centering.



- 218 ★ **10c Bistre Brown (Dry Printing)** Corner margin pair with bright colour, perfin "PS" (Province of Saskatchewan), showing remarkably bold, full strength Type D lathework. An extraordinary and unique pair, Fine OG **5,000.00**

Other than the above only a single is known to exist with a perfin (also "PS").



- 219 ★ **20c Olive Green (Wet Printing)** An exceptionally well centered mint strip of four, natural straight edge at left with portion of guide arrow, showing remarkably full Type D lathework, end stamps are NH; a choice strip ideal for exhibition, XF LH; cat. for lathework of lesser strength. (Unitrade 119c) **3,500.00**



220



221

- 220 ★ **20c Olive Green (Dry Printing)** A choice, fresh and well centered mint block with strong, full strength Type D lathework, both lathework stamps are NH; a beautiful block, VF LH (Unitrade 119) *ex. Robert Bayes (private treaty 1996)* **2,500.00**
- 221 ★ **20c Olive Green (Dry Printing)** A superb mint single with lovely rich colour, showing full strength Type D lathework, XF LH (Unitrade 119) **700.00+**



222



223

- 222 ★ **20c Olive Green (Dry Printing)** A nicely centered mint single with brilliant colour, Type D (80% strength) lathework, VF LH (Unitrade 119) **700.00**
- 223 ◎ **20c Olive Green (Wet Printing)** A scarce used block of four with unusually full Type D lathework, rich colour, light roller cancellation, F-VF; cat. for lathework of lesser strength. (Unitrade 119c) **800.00**





## THE UNIQUE FIFTY CENT ADMIRAL MULTIPLE WITH FULL TYPE D LATHEWORK



- 224 ★ 50c Brown Black (Wet Printing)** A visually striking mint block of four displaying full strength Type D lathework, THE ONLY SUCH BLOCK KNOWN, centered high resulting in a portion of the plate imprint "OTTAWA No A3" appearing along the lower edge of the sheet margin. Large part OG, the lower pair possessing immaculate never hinged gum. A great showpiece and one of the highlights of this collection; cat. as two NH singles with full strength lathework. (Unitrade 120ii) **24,000.00**

Provenance: Ron Brigham, March 2015; Lot 681

An outstanding item as almost all lathework blocks of the 50 cent show only a trace. Other than this block only a single stamp exists with full lathework - also offered in this auction. It is interesting to note after researching comparables in great Admiral collections of the past that the total population of 50 cent lathework blocks showing decent strength is very small indeed. In fact, only two blocks are known, one a fine LH block showing 80% strength from renowned philatelist Stan Lum. And this block, reported to have once graced the Hans Reiche collection, a preminent Admiral scholar and collector.

**THE FAMOUS FIFTY CENT TYPE D LATHEWORK  
AN UNUSUALLY CHOICE MULTIPLE WITH SUPERIOR STRENGTH**



- 225 ★ 50c Brownish Black (Wet Printing)** A spectacular mint block, unusually well centered with remarkable above-average strength (about 40%) Type D lathework - one of the very finest known and easily superior to almost all of the very few existing blocks. Natural gum skips on left pair, lower right stamp NEVER HINGED. A superb lathework block ideal for an advanced collection, VF+ OG (Unitrade 120ii) **15,000.00+**

Catalogue value reflects a block of four with lesser strength (20%) lathework. A stronger impression should command a substantial premium.

Provenance: Robert Bayes (private treaty; 1996)



**THE FINEST EXAMPLE IN EXISTENCE  
DISPLAYING FULL STRENGTH TYPE D LATHEWORK**



- 226 ★ 50c Brown Black (Wet Printing)** An extraordinary mint example showing remarkably complete Type D lathework, quite well centered with lovely bright colour, full original gum relatively lightly hinged. One of the most sought-after Admiral lathework rarities displaying the best possible strength, VF LH (Unitrade 120ii) **12,000.00+**

Provenance: "Crossings", January 2010; Lot 485

Expertization: 1992 Greene Foundation certificate

Most of the important Admiral issue collections sold at auction lacked an example of the fifty-cent with FULL LATHEWORK.

We were only able to find one other piece displaying 100% strength of the lathework - an off-centre block of four (*ex. Brigham*) which we also have the pleasure of offering in this sale. The next best impression (80%) of the lathework can be found on only two pieces - a well centered NH single (*ex. "Lindemann" collection*) and a block of four (*ex. Stan Lum*). The remaining few blocks and singles displaying lathework is noticeably weaker, ranging from a very rare 60% to mostly lesser than 20% strength.

A PHENOMENAL ADMIRAL SHOWPIECE - IN OUR VIEW THE BEST AVAILABLE  
COMBINING OVERALL QUALITY, CENTERING AND STRENGTH OF THE LATHEWORK.  
ONE OF THE HIGHLIGHTS OF THIS IMPORTANT COLLECTION.





- 227 ★ **\$1 Orange (Dry Printing)** An attractive mint block with fabulous colour and showing superb, full strength Type D lathework, well centered and LH on top right stamp only leaving three NH, VF; cat. for lathework pair only (Unitrade 122) **1,800.00**



229



228



230

- 228 ★ **\$1 Orange (Dry Printing)** A beautiful mint block of four showing strong colour and full strength Type D lathework, brilliant fresh colour, VF VLH (Unitrade 122) **1,500.00**
- 229 ★ **\$1 Deep Orange (Wet Printing)** A selected mint single with deep radiant colour and showing normal strength (60%) Type D lathework, well centered, VF LH (Unitrade 122b) ex. "*Lindemann*" collection **1,000.00**
- 230 ★ **\$1 Orange (Dry Printing)** An appealing corner margin mint single showing strong, full strength Type D lathework, large margined with full pristine original gum, VF+ NH (Unitrade 122) **900.00**



231



232

- 231 ☉ **\$1 Deep Orange (Wet Printing)** A nicely centered used block of four with rich colour, showing normal strength (60%) Type D lathework, light Kingston roller cancellation and still retaining full original gum; a scarce used lathework multiple, VF (Unitrade 122b) **1,920.00**
- 232 ☉ **\$1 Deep Orange (Wet Printing)** A nicely centered used single with unusually full Type D lathework (scarce on wet printings), portion of oval registration marking in violet, VF; cat. for normal 60% strength. (Unitrade 122b) **800.00+**



233



234

- 233 ★ **2c Green (Wet Printing), Part Perforate Coil** A superbly centered mint block of four imperforate horizontally, lovely rich colour and showing higher strength Type D lathework than normally encountered, portion of guide arrow shows at right; seldom seen with such superior centering and freshness, XF OG (Unitrade 128ai) **3,500.00+**
- 234 ★ **3c Carmine, Die 1 (Wet Printing), Part Perforate Coil** A post office fresh mint block of four imperforate horizontally, with characteristic dark rich colour and impression, quite well centered for this difficult issue, showing the usual strength impression of Type D lathework, full pristine original gum. A scarce lathework multiple in nice condition, VF NH (Unitrade 130a) **5,250.00**



- 235 ★ **1c Yellow, Die I (Wet Printing), Imperforate** A beautifully fresh mint corner margin block showing normal strength Type D inverted lathework, faint trace of a hinging on top left stamp only, the lathework pair is NH, VF (Unitrade 136) **1,000.00**



236



237

- 236 ★ **1c Yellow, Die I (Wet Printing), Imperforate** Corner margin single with Type D inverted lathework of normal (40%) strength, bright fresh colour, choice and appealing, VF NH; 1996 Greene Foundation cert. (Unitrade 136) ex. "Crossings" (January 2010; Lot 522) **525.00**
- 237 ◎ **1c Yellow, Die I (Wet Printing), Imperforate** A lovely used corner margin pair with Type D inverted lathework of usual strength, lovely rich colour and unobtrusive Montreal CDS postmark, VF (Unitrade 136) **560.00**



- 238 ★ **3c Carmine, Die I (Dry Printing), Imperforate** Lower right mint strip of twenty showing Plate 128 inscription above full strength Type D lathework, fresh and VF NH (Unitrade 138) **1,800.00**





- 239 ★ **3c Carmine, Die I (Dry Printing), Imperforate** Lower left mint strip of twenty showing Plate 126 inscriptions and full strength Type D lathework; hint of gum disturbance entirely confined to margin at left, fresh and VF NH (Unitrade 138) **1,800.00**



- 240 ★ **3c Carmine, Die I (Dry Printing), Imperforate** Lower right mint strip of twenty with Plate 127 inscription and full strength Type D lathework; LH at lower corners, otherwise NH, VF (Unitrade 138) **1,750.00**



- 241 ★ **2c on 3c Carmine, Die I, One-Line Surcharge** A remarkable lower right corner block with a major shift of the surcharge, resulting in two impressions being printed on top of the full strength Type D lathework, each stamp with small "KB" (Kasimir Bileski) guarantee backstamp; hinged on top right stamp, otherwise NH. A rare and visually striking lathework block, Fine; cat. as two fine NH singles with lathework (Unitrade 139i) **4,000.00**

Interestingly enough, we can see three albino embossed impressions of the surcharge visible in the right margin - oddly in reversed orientation as "STNEC" aligned with the surcharges shown on the stamps.



- 242 ★ **2c on 3c Carmine, Die I, One-Line Surcharge** A mint block from lower left edge of the sheet, noticeable shift (slanting) of the surcharge and showing full strength Type D lathework, disturbed original gum equivalent to hinging entirely confined to margin, stamps are NH, a very scarce lathework block, Fine+ (Unitrade 139i; cat. as fine hinged) **3,000.00+**



- 243 ★ **2c Violet Postage Due on Medium Wove Paper (Wet Printing)** A fabulous mint pair on regular wove paper showing full strength Type D lathework, nicely centered with lovely fresh colour and full original gum; very rare and especially desirable in such nice condition, VF LH (Unitrade J2) **10,000.00**



- 244 ★ **2c Violet Postage Due on Thin Paper (Wet Printing)** A selected, fresh mint example with nearly full strength Type D lathework in left margin, nicely centered with full original gum, scarce this nice, VF NH (Unitrade J2a) **2,400.00**



## BALANCE OF COLLECTION - LATHEWORK

*See also Lot 645*



- 245 ★ **Type A Lathework** Includes 10c plum single and pair, 20c two singles and pair, 2c+1c brown War Tax five singles, pair, strip of four, block of four and block of six. A few are NH, mainly Fine or better  
**Est. 1,000.00+**



- 246 ★ **Type B Lathework** Impressive lot of 31 singles, 15 pairs or strips of three, 19 blocks of four (a few larger) and a strip of ten. Regulars and War tax, many with full strength lathework noting shades; various multiples with NH stamps, F-VF with high catalogue value.  
**Est. 2,500.00+**



- 247 ★ **Type C Lathework** Includes 1c green vertical pair; 1c yellow single, two strips of three and four blocks of four (one block has no gum); 2c green single and lower left corner block; 3c brown pair; 10c plum two singles and strip of three. A few with disturbed OG, but includes some stamps NH in these multiples. F-VF  
**Est. 2,500.00+**





- 248 ★ Type D Lathework** An extensive lot of lathework, number of each in parentheses: 1c yellow (16; includes D1 and D inverted), 2c green (10; some D inverted), 3c brown (14), 3c carmine (16), 4c (5; two are inverted), 5c violet (16; five are inverted), 7c red brown (9), 10c blue (5), 20c (4), \$1 (3), 2c Postage Due (3), 1c-3c imperforate and part perforated (14). Ranging from many singles to large multiples. Numerous singles and units within multiples are often NH. Mixed condition in places (a few no gum) but mainly mint and Fine to Very Fine hinged or NH; light duplication but one will find that these were collected not only for shades but also for different intensity of the lathework. A great lot from which to expand. **Est. 10,000.00+**



-X249-

X250

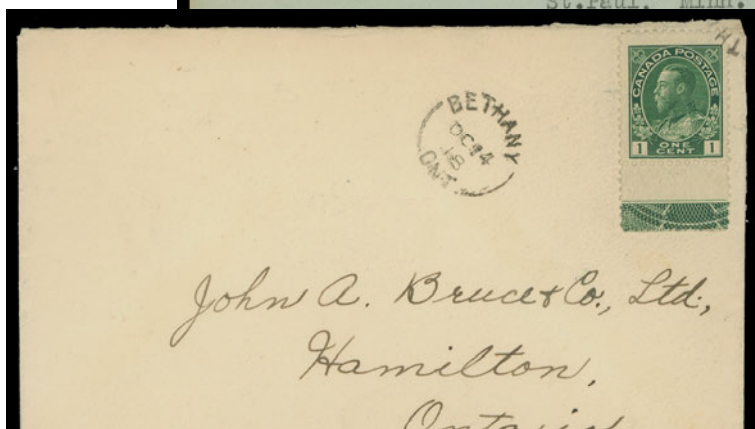
- 249 ★ Balance of Gold Medal Lathework Exhibit** Over 30 different lathework pieces from singles to blocks or strips of four, an excellent representation of Type B, C and D, assembled by owner for exceptional strength of the impression, noting shades as well. Many of the lathework stamps (if not the whole multiple) are NH and often well centered. A strong nucleus ready for expansion; Fine to Very Fine **Est. 2,500.00+**
- 250 ◎ Balance of Used Admiral Lathework** About 40 lathework pieces, mainly singles, smudge cancels to nice CDS postmarks; noted a few better such as single 7c red brown on thin paper, 10c plum with very scarce Type B, 10c blue with rare full Type D, 2c Postage Due Type D on medium wove, also cover with 1c yellow, Die I Type C strip of three to England. Understandably condition is rather mixed for these; overall Fine or better; a great lot for the specialist - as many of these are seldom encountered in any condition. **Est. 3,000.00+**



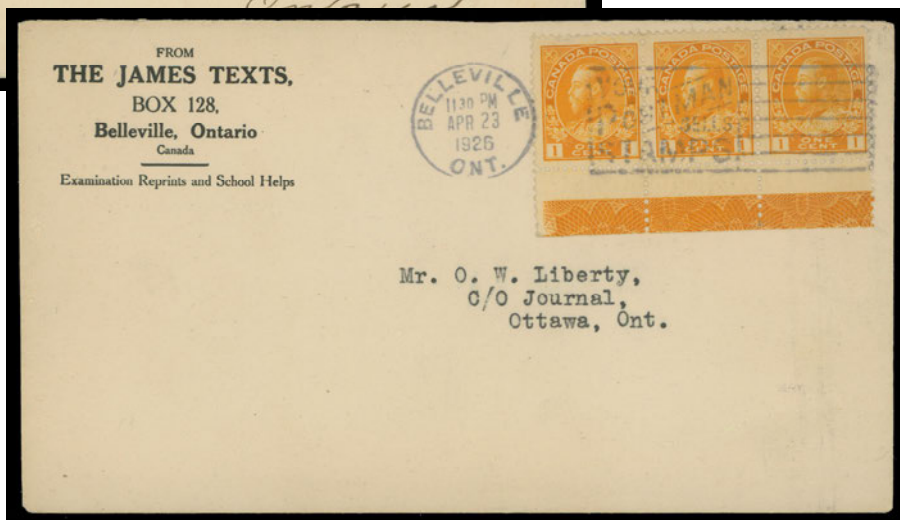
## LATHEWORK ON COVER



251



252



253

- 251 ☒ 1918 (February 19) Bentz-Richardson Co. Ltd. cover franked with 1c bright green strip of three with full Type B lathework from right of sheet, tied by clear Winnipeg machine cancel, sent to St. Paul, USA; horizontal cover fold away from stamps, F-VF (Unitrade 104) **Est. 200.00+**

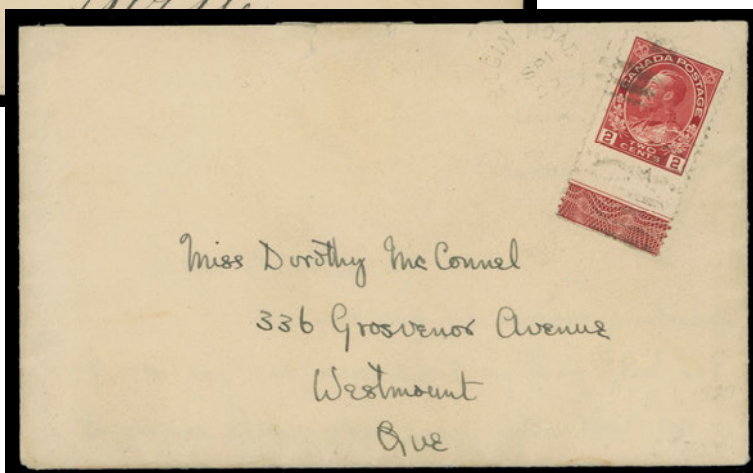
There is a printing order "901J" under the lathework of the second stamp.

- 252 ☒ 1918 (October 14) Clean cover mailed from Bethany to Hamilton, franked with a 1c yellow green Type C full strength lathework single, just tied by Bethany split ring, additional clear full strike at left, striking, very few exist on cover, F-VF (Unitrade 104i) **Est. 500.00+**
- 253 ☒ 1926 (April 23) The James Texts cover from Belleville to Ottawa, franked with an attractive strip of three 1c yellow, Die I dry printing, with seldom seen remarkably strong, full Type D lathework, tied by Belleville slogan cancel; clean and visually appealing, VF (Unitrade 105f) **Est. 250.00+**





254



255



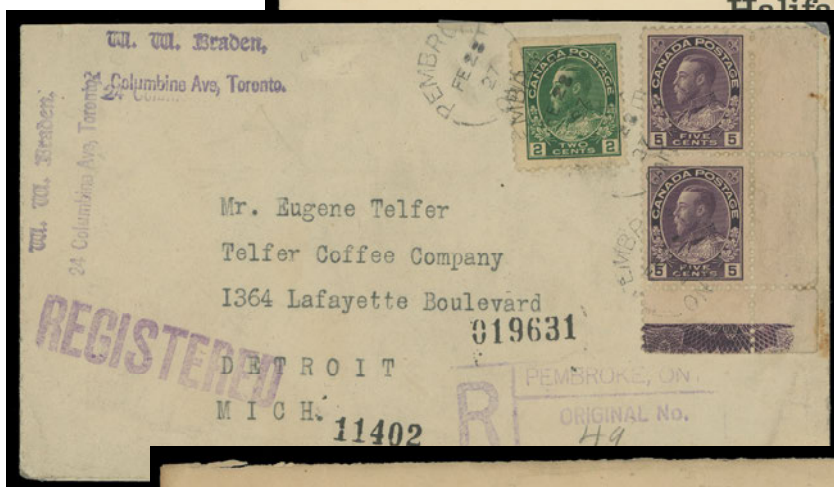
256

- 254 ☒ 1924 (May 14) Provincial Treasury Department, Regina, Sask. envelope mailed to Birtle, Manitoba franked with well centered vertical strip of three 1c orange yellow, Die I wet printing, showing normal impression of Type D1 lathework nicely tied by Regina slogan cancellation; couple tiny cover tears at top not touching stamps. A rare usage of the D1 lathework on cover, VF (Unitrade 105) **Est. 600.00+**
- 255 ☒ 1920 (September 1) Envelope with contents mailed from Elgin Road to Westmount, Quebec, bearing a nicely centered 2c carmine showing unusually complete Type B lathework, tied by grid and light Elgin Road split ring at left; cover has trivial edge flaws and small portion of backflap missing, F-VF (Unitrade 106) **Est. 150.00+**
- 256 ☒ Royal Bank of Canada cheque dated August 24, 1932, franked with 3c carmine, Die I, strip of three with nearly full Type D lathework along with Excise Tax (two-leaf) 3c blue (Van Dam FX38), cancelled by crayon and double circle datestamp from RBC - most unusual franking, VF (Unitrade 109) **Est. 200.00+**





257



258



259

- 257 ☒ 1926 (June 14) Preprinted envelope to Halifax bearing 4c olive yellow with remarkably full Type D lathework, seldom seen as most known are of lesser strength; trivial surface flaws but nicely tied by Hillsborough, NS split rings; next-day arrival backstamp. Minor cover foxing at bottom right, a striking usage, Fine (Unitrade 110a) **Est. 250.00+**
- 258 ☒ 1927 (February 28) Registered cover from Pembroke to Detroit, franked with 2c green and corner pair of 5c violet showing remarkably strong, full Type D inverted tied by Pembroke split rings, Registered straightline and box handstamps, Toronto and Detroit backstamps, F-VF and scarce (Unitrade 107, 112) **Est. 500.00+**
- 259 ☒ 1920 (May 17) Registered cover from Halifax to Hamilton franked with 1c dark yellow green and a well centered 7c olive bistre showing full strength Type B lathework, both tied by light Halifax CDS, "key-hole" registration marking, RPO transit and MY 20 receiver backstamps; VF (Unitrade 104ii, 113a) ex. "Lindemann" collection **Est. 200.00+**



- 260 ☒ 1923 (June 13) Registered cover Vancouver to Providence, Rhode Island, three colour franking of single 1c yellow Die I, 2c green and 10c blue, wet printings, the latter VF centered and showing exceptionally strong, **full strength Type D lathework**, all tied by Vancouver postmarks, registration boxed handstamp, JUN 19 receiver backstamp; light cover toning away from the 10c lathework, a rare use of the very elusive ten cent 100% strength lathework on cover, F-VF. (Unitrade 105, 107, 117)

Est. 1,250.00+



- 261 ☒ 1934 (April 26) Mixed-issue franked cover mailed special delivery from Nova Scotia to Quebec, bearing a 10c light blue, wet printing with Type D (50% strength) lathework and pair of 3c carmine Die I with full Type D lathework, 5c Arch and 5c Medallion complete the franking, all tied by Hillsborough split rings, Montreal and Rock Island backstamps. Visually appealing and F-VF (Unitrade 109, 117ii, 170, 199)

Est. 250.00+



262

263



264

- 262 ☒ 1925 (November 16) Manila envelope bearing 1c yellow, Die I imperforate single and pair, latter with normal strength Type D inverted lathework, all stamps tied by Windsor slogan cancel, sent to Detroit; light vertical fold at centre away from stamps. A very scarce and appealing usage, VF (Unitrade 136) **Est. 500.00+**
- 263 ☒ 1933 (October 3) Registered cover from Toronto to Victoria, franked with 3c carmine Die I imperforate strip of four with Plate 126 imprint and full Type D lathework, also a 1c yellow, Die II, perf 8 vertically, former has minor flaws but nicely cancelled by Toronto CDS postmarks; few such covers can exist, F-VF (Unitrade 126, 138) **Est. 350.00+**
- 264 ☒ 1922 (March 16) St. Patrick's Day postcard franked with 1c green (shortpaid 1c), double deficiency "2" due marking at Toronto with rare use of a 2c postage due with full Type A lathework, uncanceled, undoubtedly very few exist on cover or card, F-VF (Unitrade J2) **Est. 750.00+**

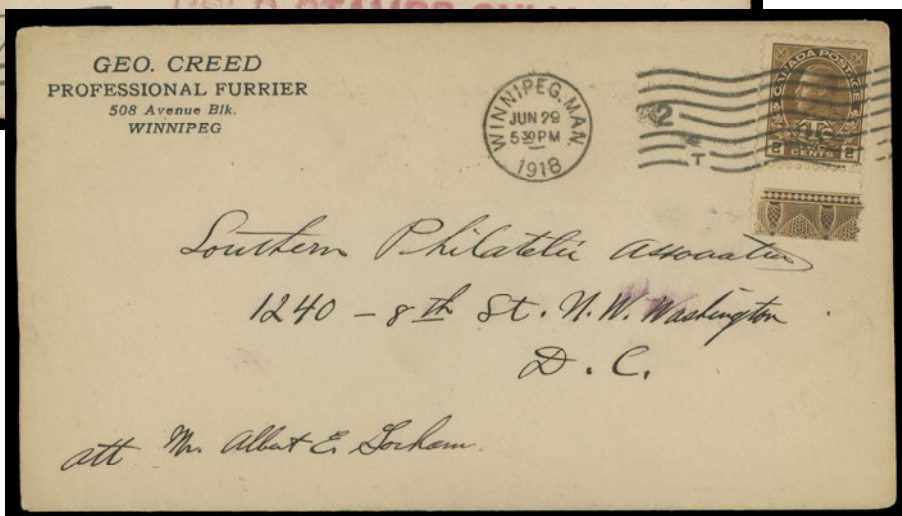




265



266



267

- 265 ☒ 1918 (December 11) One cent green KGV postal envelope uprated with pairs of 2c carmine and 2c+1c yellow brown War Tax, both pairs with Type B lathework, full strength on former and nearly full on latter, mailed registered from Kitchener to Pennsylvania, nicely cancelled with split rings; Toronto and Buffalo backstamps; an appealing and scarce usage on cover, F-VF (Unitrade MR2, MR4i)  
**Est. 350.00**
- 266 ☒ 1918 (April 15) Registered cover Toronto to USA, bearing three War Tax issues - 1c green, 2c+1c brown with full Type A lathework and 2c+1c carmine paste-up coil pair with perf flaws at left, all tied by Spadina Ave Toronto roller cancels; Christmas 1917 label affixed to back, Toronto and Boston backstamps; some cover wear at lower corners, an unusual franking, F-VF (Unitrade MR1, MR4, MR6i)  
**Est. 250.00+**
- 267 ☒ 1918 (June 29) Geo Creed Professional Furrier Winnipeg cover franked with 2c+1c brown, Die II War Tax with nearly full strength Type A lathework, neatly tied by Winnipeg machine cancellation to Washington DC, VF (Unitrade MR4)  
**Est. 150.00**



## PLATE MULTIPLES



- 268 ★ **1c Green** Mint lower left Plate 125 block of eight, well centered with fresh colour; small crease in margin, otherwise VF NH (Unitrade 104 cat. \$960 for stamps alone) **Est. 300.00+**



- 269 ★ **2c Rose Carmine** Lower margin mint Plate 1 block of eight, printing order "83" at left; a few split perfs reinforced at lower right, natural gum wrinkles but leaving five stamps NH. A beautiful block in a lovely shade closely resembling the elusive pink shade associated with Plate 2, VF ex. *Brigham March 2015; Lot 167* (described as pink) (Unitrade 106c cat. \$720+ for stamps alone) **Est. 500.00+**





- 270 ★ **2c Pink** A spectacular lower margin Plate 2 inscription block of eight, exceptionally fresh with characteristic bright colour and impression associated with this elusive shade, LH in ungummed portion of the sheet margin, all stamps with full immaculate original gum, never hinged. Among the finest existing plate multiples of the Two cent pink, VF NH (Unitrade 106b; catalogue value for stamps alone) **4,800.00**



271



272

- 271 ★ **2c Pink** A well centered mint block showing near complete Plate 2 imprint, characteristic colour and impression associated with this elusive shade, full original gum, never hinged; almost Very Fine (Unitrade 106b) **1,600.00+**
- 272 ★ **1912 2c Pink** Mint block of eight showing nearly complete Plate 2 inscription, printing (PO) order number 83 at right; the elusive shade rarely offered in such a large multiple; VLH on top centre pair, natural gum bend at right pair and folded. Nevertheless six stamps are sound with full OG, Fine NH (Unitrade 106b; catalogue value for stamps alone) **1,400.00**





- 273 ★ **2c Pink** An outstanding mint Plate 2 strip of three, characteristic colour and impression associated with this elusive shade, hinged in margin only, stamps are exceptionally well centered within noticeably large margins and full OG, XF NH; 2008 Greene Foundation certificate for a block of six from which this originates. (Unitrade 106b cat. \$1,800+) **Est. 1,000.00+**



- 274 ★ **2c Rose Carmine** A well centered lower margin Plate 30 imprint block of eight, brilliant colour on fresh paper; third stamp at top VLH, all others NH, VF (Unitrade 106c; cat. as stamps only) **880.00**  
*ex. Michael Roberts (December 2006; Lot 863)*



- 275 ★ **2c Rose Red** A remarkably fresh and extremely well centered mint Plate 46 block of eight with fabulous bright colour. A wonderful block in an excellent state of preservation, VF-XF NH (Unitrade 106ii shade; cat. as stamps only) **1,200.00+**



- 276 ★ **2c Dark Carmine** Unusually well centered block of ten showing full Plate 145 inscription, folded vertically between second and third columns, couple hinges in margin strengthening a few split perfs, otherwise full original gum and VF NH (Unitrade 106iii; cat. \$1,200 as stamps only) **Est. 500.00+**



- 277 ★ **2c Bright "Silver" Green (Wet Printing)** Mint Plate 159 block of fourteen showing complete plate inscription and printing order numbers, in an unusual and appealing shade, quite well centered and full original gum; a nice plate multiple for the specialist, F-VF NH (Unitrade 107 shade) **Est. 400.00+**



278

- 278 ★ **3c Brown (Dry Printing)** An attractive mint Plate 118 inscription block of eight, six stamps unusually well centered with large margins, LH in selvage, all stamps are NH, VF (Unitrade 108c cat. \$960 for stamps alone) **Est. 300.00+**



279

- 279 ★ **3c Carmine, Die II** Selected, fresh mint Plate 157 block of eight of the scarcer die, full inscription, light hinged in selvage only, stamps NH, VF (Unitrade 109c cat. \$1,680) **Est. 500.00+**





- 280 ★ **4c Golden Yellow (Wet Printing)** Upper right mint Plate 1 strip of ten, severed between eighth and ninth stamps, end stamps hinged, others are NH. A rarely seen plate multiple of this distinctive and elusive shade, F-VF OG / NH; cat. as four VF NH singles only. (Unitrade 110c) **Est. 2,640.00**



- 281 ★ **4c Olive Yellow (Wet Printing)** A beautiful mint Plate 2 strip of ten, well centered with bright colour, choice and rarely seen, VF NH (Unitrade 110b cat. \$2,700 for stamps alone) **Est. 1,000.00+**



- 282 ★ **4c Olive Bistre (Wet Printing)** A nicely centered, fresh mint Plate 4 strip of ten, LH in selvedge only, stamps VF NH (Unitrade 110 cat. \$2,400 for stamps alone) **Est. 750.00+**



- 283 ★ **4c Yellow Ochre (Dry Printing)** Mint Plate 5 inscription block of ten from upper left pane; fold between second and third columns, minor perf separation, LH in selvedge only, all stamps are NH, Fine+ (Unitrade 110d) **Est. 350.00+**





284



285

- 284 ★ **5c Indigo** A most impressive mint Plate 1 block of six, printing order "PO 84" shown at right, distinctive, radiant colour and sharp impression; heavy hinging in selvedge, one hinge touches top left pair, the other four stamps with full pristine NH original gum. Plate multiples of the 5c indigo are seldom encountered, especially desirable with such freshness and centering, F-VF (Unitrade 111a cat. \$5,340 as stamps only) **Est. 1,500.00+**
- 285 ★ **5c Indigo** An attractive mint Plate 1 block, characteristic shade and impression of this elusive first printing; hinged in selvedge only, all stamps with full original gum, Fine+ NH (Unitrade 111a; catalogue value for stamps alone) *ex. Stan Lum (September 2013; Lot 1048)* **1,400.00**



- 286 ★ **5c Pale Blue** Visually striking mint Plate 1 strip of five, original printing number (83) etched out and replaced by "115" at left, printed in a beautiful pale shade of blue and a rarity for Plate 1 which is normally characterized by the indigo shade; couple tiny perf flaws with full unblemished original gum, F-VF NH (Unitrade 111 shade; cat. \$2,600 for stamps alone in the more common shade) *ex. George Marler (September 1982; Lot 329 - as a strip of six)* **Est. 750.00+**



- 287 ★ **5c Deep Blue** Impressive top sheet margin mint strip of five with Plate 2 imprint and printing order "84" at right, exceptionally deep rich colour closely resembling the indigo shade; short perf at lower right, hinged in selvedge barely touching centre stamp, the other four stamps are NH. A beautiful plate strip in an unusual shade that really stands out, VF (Unitrade 111 shade; cat. \$3,900 for stamps alone in the common blue shade) **Est. 1,000.00+**



288

- 288 ★ **5c Dark Blue** Unusually well centered mint Plate 10 imprint strip of four from upper left of the sheet, exceptionally fresh and well centered, LH in selvage only leaving stamps with full original gum never hinged. An attractive and choice plate strip of this valuable stamp, VF (Unitrade 111 cat. \$3,600 for stamps alone) *ex. Fred Goodhelsen (June 2004; Lot 2262)* **Est. 1,000.00+**



289

- 289 ★ **5c Bright Blue** A choice mint pair showing Plate 14 imprint in lower margin, brilliant fresh, well centered and with full original gum, VF NH (Unitrade 111 cat. \$1,800 for stamps alone) **Est. 600.00+**



- 290 ★ **5c Rose Violet (Wet Printing)** Extremely well centered mint Plate 15 imprint strip of four, lovely bright and distinctive shade, LH in selvage only, stamps with pristine original gum, VF+ NH (Unitrade 112ii cat. \$720+) **Est. 300.00+**



- 291 ★ **5c Violet (Wet Printing)** Selected, fresh and nicely centered mint Plate 22 block of eight, full inscription and full original gum, LH in selvage, all stamps VF NH (Unitrade 112 cat. \$1,440 for stamps alone) **Est. 400.00+**





- 292 ★ **5c Violet (Redrawn Framelines; Dry Printing)** Quite well centered mint Plate 24 strip of ten, LH in margin only, stamps are NH with almost Very Fine centering (Unitrade 112c cat. \$1,300 for stamps alone) **Est. 400.00+**



- 293 ★ **5c Violet (Redrawn Framelines; Dry Printing)** Post office fresh and nicely centered mint Plate 25 imprint strip of four with pristine original gum, choice, VF NH (Unitrade 112c cat. for stamps alone) **840.00+**



- 294 ★ **7c Bright Sage Green** An extremely well centered mint block of four of this very elusive shade, showing large portion of Plate 4 imprint at top, gorgeous colour and full pristine original gum. A wonderful block in choice condition, rarely seen, VF NH; cat. for stamps only. (Unitrade 113c) **12,000.00**





295



298

- 295 ★ **7c Greenish Yellow** Selected, fresh and nicely centered mint Plate 4 strip of three with lovely rich colour, LH in selvage only, stamps are VF NH (Unitrade 113iv cat. \$3,600 for stamps alone)  
ex. Fred Goodhelpsen (November 2004; Lot 2164) **Est. 1,000.00+**



- 296 ★ **7c Pale Sage Green** Lower margin mint Plate 4 imprint strip of four in an appealing bright shade, seldom seen in a plate multiple; split perfs between third and fourth stamps reinforced by hinges. A seldom seen plate multiple of this distinctive shade, F-VF OG (Unitrade 113c cat. for stamps alone)  
**1,000.00+**



- 297 ★ **7c Golden Yellow** An appealing mint Plate 4 imprint strip of four in a distinctive and unusual shade, LH in selvage, stamps are NH, F-VF (Unitrade 113 shade cat. \$600 for stamps of the common shade)  
**Est. 500.00+**
- 298 ★ **7c Sage Green** Mint pair of the sought-after shade, showing large portion of Plate 4 imprint in top margin, large part original gum, F-VF (Unitrade 113c cat. \$1,000 for stamps alone) **Est. 350.00+**



- 299 ★ 7c Yellow Ochre** Upper left mint Plate 5 strip of twenty, unusually well centered, bright fresh colour, couple pencil numbers in selvedge and small gum thin on one stamp, some disturbed OG equivalent to light hinge mark on four others. The remaining fifteen stamps are NH. A very scarce intact plate multiple, VF; cat. for stamps alone; no premium added for plate imprint. (Unitrade 113) **4,000.00**



300



302

- 300 ★ 7c Yellow Ochre** A lovely, fresh, well centered mint Plate 5 block in an attractive pale shade, shows complete imprint, VF NH (Unitrade 113 cat. \$960 for stamps alone) **Est. 300.00+**



- 301 ★ 7c Red Brown (Wet Printing)** A post office fresh and well centered mint Plate 7 imprint strip of twenty; natural gum skip on one stamp (Pos. 1), a beautiful multiple in excellent condition, VF NH (Unitrade 114b cat. \$2,700 as normal stamps) **Est. 1,000.00+**

The diagonal line in "V" of SEVEN plate variety is shown on two stamps in the second row.

- 302 ★ 7c Red Brown on Thin Paper (Dry Printing)** Mint Plate 7 imprint pair on the scarce greyish thin wove paper, hinged in margin, stamps are NH, F-VF (Unitrade 114iii cat. \$1,150 for stamps alone) **Est. 500.00+**





303



304

- 303 ★ **8c Blue** Precisely centered mint block with brilliant colour, large portion of Plate 3 imprint in margin, VF+ NH; 1996 Greene cert. (Unitrade 115 cat. \$720 for stamps only) **Est. 250.00+**
- 304 ★ **8c Light Blue** Choice mint Plate 3 imprint strip of three, gorgeous colour, VF NH (Unitrade 115i cat. \$630 for stamps alone) **Est. 200.00+**



- 305 ★ **10c Reddish Purple** A fabulous mint Plate 1 imprint strip of six with printing order (PO) "86" at right, displaying true pastel-like colour and impression associated with the elusive first printing; hinged in selvage and natural diagonal gum bends on three stamps, an important and rarely seen Plate 1 multiple. Stamps of the first printing are challenging to find in superior condition. The largest recorded Plate 1 multiple and in our view the most desirable and finest of the very few known to exist, VF NH (Unitrade 116a) ex. *George Marler (Part 1), September 1982; Lot 449* **10,800.00**



- 306 ★ **10c Plum** An exceptionally fresh mint Plate 8 imprint strip of three; a few split perfs mostly in margin between first and second stamps, hinged in margin only, stamps with pristine original gum and F-VF NH (Unitrade 116 cat. for right VF NH pair only) ex. *Stan Lum (September 2013; Lot 1081)* **2,400.00+**





- 307 ★ **10c Plum** An impressive Plate 11 imprint block of eight, very well centered, a few perfs separated and couple hinges confined to selvage only, all stamps are NEVER HINGED. A rare plate block in choice condition, VF; cat. for stamps only. (Unitrade 116) **9,600.00**



- 308 ★ **10c Brown Purple** Brilliant fresh mint Plate 11 imprint strip of four, quite well centered, mild hinging on three stamps, second stamp NH. An attractive and scarce plate multiple in select quality, VF OG / NH (Unitrade 116 cat. for stamps only) **2,400.00+**



- 309 ★ **10c Brown Purple** An appealing and very scarce mint Plate 12 imprint strip of ten from the upper left pane, some perf separation supported by hinges, three stamps NH, Fine with brilliant colour; very few full plate strips have survived. (Unitrade 116) **Est. 2,000.00+**



310



313

- 310 ★ 10c Light Blue (Wet Printing)** A well centered mint Plate 15 block; tiny natural gum inclusion at lower right and LH in selvedge, otherwise VF NH (Unitrade 117ii cat. \$960 for stamps alone)

Est. 300.00+



- 311 ★ 10c Blue (Wet Printing)** An impressive, nicely centered mint Plate 21 strip of twenty, post office fresh colour; LH on two straight edge and one other stamp (Pos. 10), seventeen stamps VF NH; a beautiful plate multiple. (Unitrade 117 cat. \$4,320)

Est. 1,250.00+



- 312 ★ 10c Blue (Dry Printing)** Brilliant, fresh and well centered mint Plate 21 strip of ten, hinged on straight edge stamp at right, otherwise VF NH (Unitrade 117a cat. \$1,960)

Est. 600.00+

- 313 ★ 10c Light Blue (Dry Printing)** Mint Plate 21 block of eight with full inscription, lovely distinctive shade which is in our opinion quite scarce and undervalued on the dry printing, F-VF NH (Unitrade 117iii cat. \$1,080 for stamps alone)

Est. 350.00+





314 ★ **10c Blue (Wet Printing)** A nice mint Plate 22 block of eight with full inscription, brilliant fresh colour; LH in selvedge only, all stamps are F-VF NH (Unitrade 117 cat. \$1,200 for stamps only)  
**Est. 350.00+**



315 ★ **10c Bistre Brown** Mint Upper Right Plate 23 strip of twenty, radiant fresh colour, LH in selvedge only, all stamps are NH; a scarce intact plate strip, F-VF NH; cat. \$2,300 for stamps alone (Unitrade 118)  
**Est. 750.00+**



316 ★ **10c Bistre Brown** A fresh, nicely centered mint Plate 25 block of eight with full inscription, LH in selvedge, stamps are NH, VF (Unitrade 118 cat. \$1,440 for stamps alone)  
**Est. 500.00+**





- 317 ★ 20c Dark Grey Green (Wet Printing)** An impressive mint Plate 1 (printing order "87") strip of three of this key early printing, characteristic colour and impression; a few perfs separated entirely in the sheet margin strengthened by a hinge. All stamps are exceptionally well centered with full original gum, never hinged. Rarely seen in premium quality, XF NH (Unitrade 119d cat. \$3,600+)

**Est. 1,250.00+**



- 318 ★ 20c Sage Green (Wet Printing)** A well centered lower margin mint Plate 2 strip of three of this elusive shade; left and right stamps are NH, F-VF LH (Unitrade 119b cat. \$1,575)

**Est. 500.00+**



- 319 ★ 20c Olive Green (Wet Printing)** Upper Right mint Plate 5 strip of ten; severed between fourth and fifth stamps, hinge supported and lightly hinged in margin, other eight stamps NH; a very scarce and Fine+ centered plate multiple. (Unitrade 119)

**Est. 600.00+**



- 320 ★ **20c Olive Green (Wet Printing)** A remarkable mint Plate 7 strip of four with brilliant colour, hinged in selvedge only, stamps are VF NH (Unitrade 119c cat. \$2,640+) **Est. 750.00+**



- 321 ★ **20c Dark Olive Green (Wet Printing)** Fresh mint Plate 7 strip of four, deep rich colour, hinged in margin and on third stamp leaving three NH, F-VF (Unitrade 119c cat. \$1,100 as stamps only) **Est. 350.00+**



## A warm welcome to The Canadian Philatelic Society of Great Britain

**Founded 70 years ago to promote and study all aspects of philately in British North America (Canada and its Provinces), the Society offers its members:-**

- A quarterly award-winning full colour magazine, 'Maple Leaves'
- Auctions each year with many hundreds of lots
- An extensive library of published books and articles
- Exchange packet
- Subscriptions payable in local currency

For more information or membership details visit our website at [www.canadianpsgb.org.uk](http://www.canadianpsgb.org.uk) or write to the Secretary: John Watson, Lyngarth, 106 Huddersfield Road, Penistone, South Yorks S36 7BX

Our 2018 Convention will be in Welwyn Garden City  
from September 5th to 9th.  
[www.canadianpsgb.org.uk](http://www.canadianpsgb.org.uk)



- 322 ★ **\$1 Deep Orange (Wet Printing)** A remarkable block of eight showing complete Plate 1 inscription at top - the early wet printing with distinctive rich colour, reasonably centered; a few split perfs supported by a hinge in selvedge only, all eight stamps are NEVER HINGED. A key and exceedingly rare plate block of the wet printing, especially desirable as it shows the full imprint, F-VF; cat. for stamps only. (Unitrade 122b) **8,000.00+**

Plate imprints of the wet printing are considerably clearer and sharper than those of the dry printings.



- 323 ★ **\$1 Orange (Dry Printing)** A choice mint block of eight with complete Plate 1 inscription (usual light impression); perf separation in selvedge only, stamps with brilliant fresh colour, well centered and with full original gum. A nice plate multiple of this high value, VF NH; cat. for stamp alone. (Unitrade 122) **3,600.00**





- 324 ★ **1c Yellow, Die I (Wet Printing), Imperforate** Upper Right mint Plate 179 strip of twenty, deep colour, LH in top margin only, all stamps VF NH; cat. for stamps only. (Unitrade 136) **2,000.00**



- 325 **1c Yellow, Die I (Wet Printing), Imperforate** A choice mint Plate 179 block of eight with full imprint, lovely rich colour, VF NH (Unitrade 136) **1,000.00**
- 326 ★ **2c Green (Wet Printing), Imperforate** A post office fresh mint Plate 188 imprint block of eight, pristine original gum, VF NH (Unitrade 137) **1,000.00**



- 327 ★ **2c Green (Wet Printing), Imperforate** Top left margin Plate 188 imprint strip of twenty, LH in selvedge and some light gum toning, otherwise VF NH (Unitrade 137 cat. \$2,000+) **Est. 500.00+**



- 328 ★ 2c on 3c Carmine, Die I, One-Line Surcharge A nicely centered mint block of eight showing full Plate 115 imprint, VF NH (Unitrade 139) **1,500.00**



- 329 ★ 2c on 3c Carmine, Die I One-Line Surcharge Upper left mint Plate 117 strip of twenty, some perf separation confined to margin at top, fresh and with full original gum, F-VF NH (Unitrade 139) **2,745.00**



- 330 ★ 2c on 3c Carmine, Two-Line Surcharge A selected, fresh and well centered mint Plate 115 block of eight; a few split perfs entirely in margin, VF NH (Unitrade 140) **900.00**





331



332

- 331 ★ **1c Green War Tax A** nicely centered Plate 7 imprint block of six, top corner stamps hinged leaving four NH, VF (Unitrade MR1 cat. \$560 for stamps alone) **Est. 200.00+**
- 332 ★ **2c Carmine War Tax A** selected, fresh lower left mint Plate 5 imprint block of eight, nicely centered, centre block LH, end pairs NH; a nice multiple, VF (Unitrade MR2; cat. \$640 as stamps only) **Est. 250.00+**



- 333 ★ **2c Rose Carmine War Tax A** remarkably well centered lower margin Plate 3 strip of ten, lovely bright colour and with full OG; sixth stamp LH, others are NH, VF (Unitrade MR2a cat. \$1,400 for stamps alone) **Est. 500.00+**



- 334 ★ **2c Carmine War Tax** Upper left mint Plate 6 block of eight, well centered with large margins and bright fresh colour, hinged in selvedge only, stamps with full original gum and VF NH (Unitrade MR2 cat. \$960 as stamps only) **Est. 350.00+**





- 335 ★ **20c Olive Green with INLAND REVENUE WAR TAX Overprint in black** An impressive mint Plate 2 imprint block of eight, superior centering which is difficult to find, hinged in selvage and bottom centre pair leaving six stamps never hinged. A wonderful plate block of great rarity, VF+ OG / NH; catalogue value for stamps only. (Unitrade MR2Ci) **5,200.00+**

Second stamp in second row (Position 2UL15; Marler Re-entry #1 described in his handbook on page 402) shows a very distinctive Re-entry visible below "CA" of CANADA, in "E" of POSTAGE and incomplete frame in lower left value tablet.



- 336 ★ **50c Black with WAR TAX Overprint in Red** Mint Plate 1 block of six with nearly full imprint, quite well centered with fabulous colour, printing order "88" number etched out at right; tiny surface flaw at bottom right, hinged in selvage and on lower right pair, lower left stamp and three top stamps are NEVER HINGED. A key and rarely seen plate block of the Admiral issue, F-VF; catalogue value for stamps alone. (Unitrade MR2D) **5,400.00+**



- 337 ★ **2c+1c Carmine, Die II War Tax Spectacular Plate 15 strip of twenty of the scarcer die, from upper left pane, hinged on seven stamps leaving thirteen NEVER HINGED.** A very rare plate multiple in an excellent state of preservation and perfect for a serious Admiral collections, F-VF; cat. for stamps only; no premium added for the plate imprint. (Unitrade MR3a) *ex. Fred Goodhelpsen (June 2004; Lot 2449)* **11,675.00**



- 338 ★ **2c+1c Brown, Die I War Tax** An exceptional Plate 1 imprint strip of three, natural straight edge left with large portion of guide arrow, extremely well centered with deep rich colour, hinged only on centre stamp, left and right-hand stamps with pristine original gum, NEVER HINGED. A very rare and choice plate multiple of this elusive die and this example ranks among the choicest, VF OG / NH; cat. for stamps alone (Unitrade MR4a) **9,450.00**

Provenance: Harry Lussey, June 1981; Lot 1331  
Fred Goodhelpsen (November 2004; Lot 2337)



- 339 ★ **2c+1c Brown, Die I War Tax** Mint Plate 1 pair of the scarcer die; hinged in margin, faint crease on left stamp, both stamps are NH, F-VF and rare (Unitrade MR4a cat. \$4,850 as stamps only) *ex. George Marler (September 1982; Lot 726)* **Est. 1,000.00+**





- 340 ★ **2c+1c Yellow Brown, Die II War Tax** A remarkably fresh mint Plate 56 strip of twenty from upper right pane; nicely centered for such a large multiple; LH on sixth stamp in first row, otherwise VF NH (Unitrade MR4i cat. \$2,320) **Est. 750.00+**



- 341 ★ **2c+1c Brown, Die II War Tax** Upper left mint Plate 56 block of six, lovely warm colour, VF NH (Unitrade MR4 cat. \$720 for stamps alone) **Est. 250.00+**



- 342 ★ **2c+1c Carmine, Die I War Tax, Perf 12x8** A remarkable mint Plate 1 block of ten, unusually with guide arrow and intact perforations at left, lovely rich colour; trivial gum wrinkle on one stamp, natural gum inclusion on another, hinged in selvage leaving all stamps NH. A very nice plate multiple of this difficult stamp, VF (Unitrade MR5 cat. \$2,400 as stamps only) **Est. 750.00+**



## BALANCE OF COLLECTION - PLATE MULTIPLES

- 343 ★ One Cent Admiral Plate Numbered Strips** Includes 1c green with shades in plate strips of ten (unless otherwise mentioned) - Plate 8 UL (split between 2nd and 3rd stamps), #25 lower margin, #55 UR (split at centre), #57 LL, 63 UL, 118 LL and 135 LL; then 1c yellow Plate 169 UL, 170 UR. Condition variable from small flaws to very fine with many stamps NH. *(Not Illustrated)* **Est. 500.00+**



- 344 ★ Two cent Plate Numbered Strips** Includes 2c carmine with myriad shades in plate strips of ten (unless otherwise mentioned) with Plate 18 LR, 26 LR, 28 LL & LR, 37 LR, 38 UL & LL, 41 UL & LR, 44 UR, 45 UR, 47 LR, 59 LL, 60 LR, 75 UR & LR, 90 LR and UL (strip of twenty), 91 LL, 93 UR and LL, 103 UR two strips, 105 LL, 125 UR and 137 UR; also 2c green with Plate 163 UL (strip of twenty), 166 UL, 201 UL and 203 UR. A few strips severed, condition variable from small flaws to very fine with; many stamps NH **Est. 2,500.00+**

- 345 ★ Three Cent to Seven Cent Plate Numbered Strips** Includes plate strips of ten (7) and of 20 (7), noting 3c Plate 37 UR strip of 20, 4c Plate 1 UR severed and Plate 2 UR strips of 10, 3c perf 12x8 Plate 13 UR & 14 UR strips of 20, 5c blue Plate 7 LR & 13 UL severed strips of ten, 5c violet Plate 21 UL & UR strips of 20, latter on thin paper is severed, 7c Plate 8 UL strip of 20, etc. Condition varies from mixed in places to very fine with many stamps NH. *(Not Illustrated)* **Est. 1,250.00+**

- 346 ★ War Tax Plate Numbered Strips** Includes plate imprint strips of ten (unless otherwise mentioned) with MR1 Plate 14 UL two strips (different POs), one is severed, MR2 Plate 4 LL, 5 UL, 6 LR strip of 20, MR3 with shades Plate 2 LL two strips of ten, one severed, 4 LL, 8 UR, 11 UL severed strip of 20, 12 UR strip of 20, MR4 Plate 17 UL, 20 LL, 35 UL, 53 UR, 55 UL, MR5 Plate 1 three left pane strips of 20, Plate 2 left pane strip of 20. Condition variable from trivial flaws to very fine; many stamps are NH. *(Not Illustrated)* **Est. 1,500.00+**



- 347 ★ Admiral Plate Imprint Multiples** Nice lot of over 30 plate blocks of four or often larger (up to twelve stamps), noted shades and better blocks of the 1c green (shades), 2c carmine (early printings / shades), 4c (shades), 5c blue Plate 9 & 14 blocks, 50c brown black (Plate 2 wet) block, War Tax issues, etc. A few minor flaws; overall nice F-VF **Est. 1,500.00+**



- 348 ★ **Plate Imprint Block Assortment** Lot of 30 different plate blocks of four or larger, twelve are War Tax stamps. Majority with all stamps NH (hinged in selvage only), centering varies from Fine to Very Fine  
(Not Illustrated) Est. 1,000.00+



- 349 ★ **Extensive Collection of Plate Strips** Organized on stockpages from 1 cent (shades) to 50 cent, plus imperforates, provisionals and War Tax. Excellent representation of different plate numbers, shades and printings; the odd duplicate (usually for shade difference). comprised mainly of plate pairs and strip of four but also many longer strips. Includes : #104 (18), 105 (6), 106 (47), 107 (15), 108 (6), 109 (2), 110 (13), 111 (3), 112 (6), 113 (10), 114 (4), 115, 116 lower margin plate 3 strip of four, 117 (2), 118 (3), 119 (5), 120 (3), imperforate & provisionals (8) and War Tax (28). Understandably condition will vary in places; mainly sound Fine to Very Fine and often with NH stamps. Well worth close examination to appreciate the depth of this lot.  
Est. 5,000.00+



SINGLES AND MULTIPLES



- 350 ★ **1c-\$1 Admiral Issue** Complete set of eighteen in blocks of four, plus imperforate 1c-3c blocks and war tax MR1-MR5; mostly with select centering, mint hinged (several blocks with lower pair NH). Scarcer printings found on the Fifty cent as silver black wet and One dollar as deep orange wet, both from UR corner margin. Overall with select VF centering (Unitrade 104-122, 136-138, MR1-MR5) **Est. 1,500.00+**



- 351 ★ **1c-\$1 Admiral** Complete basic set of 18 mint stamps, wet or dry printings, all selected for fresh colours. Nicely centered with full OG; #116 is the elusive first printing reddish purple shade. A beautiful set, VF NH (Unitrade 104-122 cat. \$5,250 as most common shade / printing) **Est. 1,250.00+**



- 352 ★ **One Cent Green Shades / Printings** An attractive lot of twelve VF NH singles, distinctive shades ranging from deep blue green to dark yellow green and noting better such as deep blue green, grey green and green on greyish paper (couple shortish). All with fresh colours and a great lot for shades. (Unitrade 104 + shades cat. \$2,100+) **Est. 750.00+**





- 353 ★ One Cent Green (Shades) Selection of Mint Blocks** Nice lot of eleven different shades from deep blue green to pale yellow green, all mint NH (the odd block has one VLH stamp), centering ranges from Fine to Very Fine (Unitrade 104 shades) **Est. 750.00+**



354



355



356



357

- 354 ★ 1c Green** Very well centered mint single with lovely fresh colour and full original gum, XF NH **120.00+**
- 355 ★ 1c Yellow Green** A superb mint example, very well centered within large margins, brilliant fresh colour, XF NH (Unitrade 104e) **120.00+**
- 356 ★ 1c Yellow Green** A choice mint single with deep rich colour and well centered, XF NH (Unitrade 104e) **120.00+**
- 357 ★ 1c Grey Green** Selected mint example of this elusive shade, lovely bright impression, full pristine original gum, VF NH (Unitrade 104ix) **300.00**



358



359

- 358 ★ 1c Pale Green** Very well centered mint in a distinctive paler shade of green, lovely impression and full original gum, XF NH (Unitrade 104 shade) **120.00+**
- 359 ★ 1c Deep Blue Green** An unusually well centered mint pair showing "hairlines", VF NH; photocopy of 2004 Greene Foundation cert. for a block of 25 from which it originates. (Unitrade 104viii) **420.00**



360



361

- 360 ★ **1c Yellow, Die I (Dry Printing)** Select mint with exceptional colour, well centered, VF+ NH (Unitrade 105f) **150.00**
- 361 ★ **1c Yellow, Die I (Wet Printing)** A superb mint example with oversized margins, brilliant fresh colour and full pristine original gum, XF NH GEM (Unitrade 105i) **120.00+**



- 362 ★ **Two cent Carmine (Shades) Selection of Mint Blocks** A most impressive lot of fourteen different shades from first printing carmine to deep red, mostly mint NH; the scarce pink shade block has top pair VLH and two other blocks with one stamp LH. Centering ranging from Fine to Very Fine (Unitrade 106 shades) **Est. 750.00+**



-X363-



- 363 ★ **Two Cent Carmine Shades** Neat lot of nine different shades from rose carmine to deep rose red, noting the better orange red and rose carmine with clear "hairlines" among others. NH and almost all VF (Unitrade 106 + shades cat. \$1,250) **Est. 400.00+**
- 364 ★ **2c Carmine** A well centered within mint single with large margins and full original gum, VF+ NH (Unitrade 106) **120.00+**
- 365 ★ **2c Carmine** A premium mint example, exceptionally well centered and fresh with full original gum, XF NH (Unitrade 106) **120.00+**



- 366 ★ 2c Pink** An outstanding corner margin block of eight of this distinctive and sought-after shade, superbly centered with very large margins, fabulous colour and bright impression on pristine paper; LH in selvage only, all stamps with full immaculate original gum, never hinged. A wonderful block of this elusive shade in premium quality, XF NH (Unitrade 106b) **4,800.00+**



367



368

- 367 ★ 2c Pink** An exceptional mint example of this key shade originating from Plate 2 - showing clear "accent" variety over "C" of CENTS; brilliant fresh colour on pristine paper and with full immaculate original gum, never hinged. A wonderful stamp, worthy of the finest collection, XF NH GEM; 1994 Greene Foundation cert. ex. "Crossings" (January 2010; Lot 367) (Unitrade 106b) **600.00+**
- 368 ★ 2c Pink** A fresh mint example with exceptional colour and pristine original gum, never hinged and nearly Very Fine centered (Unitrade 106b) **400.00**





369



375

- 369 ★ **2c Rose Carmine** Mint block of six in a beautiful early shade, printing order "98" in lower margin which according to Marler handbook was allocated to plates No. 3 to No. 8; pencil notation in margin only. Nicely centered with brilliant colour and full original gum, VF NH (Unitrade 106c) **720.00**



370



371



372

- 370 ★ **2c Rose Carmine** A remarkably well centered mint single with large margins and pristine original gum; a lovely stamp, XF NH (Unitrade 106c) **120.00+**
- 371 ★ **2c Rose Carmine** A visually striking mint single, well centered with impressive margins, bright colour and full original gum, VF+ NH JUMBO (Unitrade 106c) **120.00+**
- 372 ★ **2c Rose Carmine** A selected, fresh and well centered mint example, distinctive shade and impression of an early printing; VF+ NH (Unitrade 106c) **120.00**



373



374

- 373 ★ **2c Dark Carmine** A remarkable mint example, well centered with enormous margins, vivid colour on fresh paper and possessing full pristine original gum, XF NH GEM (Unitrade 106iii) **120.00+**
- 374 ★ **2c Orange Red** Nicely centered with characteristic vivid colour and full pristine original gum; an elusive shade, VF NH (Unitrade 106iv) **180.00**
- 375 ★ **2c Rose Carmine, Hairlines** A remarkably fresh, well centered mint block showing prominent "hairlines", abnormally bright shade, intact perforations and full immaculate original gum; hard to find in such nice quality, VF+ NH (Unitrade 106ix) **1,200.00**



376



377



378



379

- 376 ★ 2c Deep Rose Red, Hairlines** A selected mint single with lovely fresh colour, intact perforations which is not often seen on this particular printing, showing strong "hairlines" on both sides and full pristine original gum, VF NH (Unitrade 106ix) **300.00**
- 377 ★ 2c Carmine Red** A choice mint example in an unusual shade on a distinctive pink tinged paper; a beautiful stamp that really stands out, VF NH (Unitrade 106 shade) **Est. 150.00+**
- 378 ★ 2c Red** Superb mint in a distinctive bright shade, post office fresh with choice centering and pristine original gum, XF NH GEM (Unitrade 106vii) **120.00+**
- 379 ★ 2c Red** An exceptional mint example, precisely centered with large even margins, radiant colour on fresh paper and with full original gum; a superb stamp, XF NH GEM (Unitrade 106vii) **120.00+**



380



-X381-



382

- 380 ★ 2c Bright Red** A highly select mint example with unusually bright colour, very well centered with large margins and full pristine original gum; a beautiful stamp for the shade enthusiast, XF NH (Unitrade 106vii) **120.00+**
- 381 ★ 2c Yellow Green (shades)** Nice lot of five different shades / printings - includes three noticeably different shades of yellow green wet printings and both shades of dry printing, all select VF NH (Unitrade 107 first printing, 107, 107 shade, 107e, 107iv) **585.00**
- 382 ★ 2c Yellow Green (Wet Printing)** A premium mint single in a brighter shade than normally seen; a beautiful stamp, VF+ NH (Unitrade 107) **135.00+**



- 383 ★ 2c Green (Dry Printing)** Mint block of four on THIN TRANSLUCENT PAPER (design shows through and is visible from reverse), different than the listed wet printing thin paper (107a). Three stamps are NH, an interesting conversation piece, VF OG (Unitrade 107e variety) **Est. 200.00+**



384



386

- 384 ★ **2c Deep Green (Wet Printing)** An appealing mint example with unusually deep colour - very distinct from the other shades found on this stamp, pristine original gum; an underrated stamp, XF NH (Unitrade 107i) **120.00+**



385

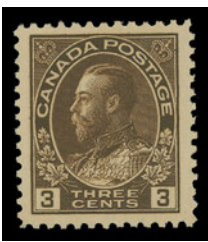


X387

- 385 ★ **2c Bright "Silver" Green (Wet Printing)** A remarkable mint block in an unusually bright shade, nicely centered with large margins, a lovely block, VF NH (Unitrade 107 shade) **540.00+**
- 386 ★ **2c Bright "Silver" Green (Wet Printing)** Choice example showing a "silver" tinge associated with the first printing, a distinctive radiant colour; beautiful and fresh, VF NH (Unitrade 107 shade) **Est. 150.00+**
- 387 ★ **Three Cent Brown (Shades) Mint Blocks** Neat lot of eight different shades from dark brown (wet) to brown (dry) printings including the scarce yellow brown shade, all mint NH, centering from Fine to Very Fine (Unitrade 108 shades) **Est. 600.00+**



-X388-



-X389-



- 388 ★ **3c Brown (shades)** The set of four distinct shades / printings - wet printings in brown, yellow brown and dark brown, along with the brown dry printing. All selected with large margins and VF NH (Unitrade 108-108ii) **570.00**
- 389 ★ **3c Brown Admiral Shades / Printings** Selection of five VF NH singles, includes wet printings light brown, brown, yellow brown, dark brown and dry printing brown shade. (Unitrade 108 shade, 108b, 108c, 108d cat. \$690) **Est. 300.00+**





390



392



393



395



391

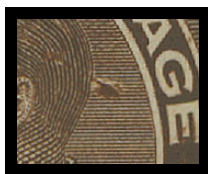


394

- 390 ★ **3c Brown (Wet Printing)** Extremely well centered with balanced large margins, lovely rich colour; a nice stamp, XF NH (Unitrade 108) **120.00+**
- 391 ★ **3c Yellow Brown (Wet Printing)** An appealing mint block in a most distinctive bright shade, seldom encountered in such a nicely centered multiple, VF NH (Unitrade 108b) **720.00**
- 392 ★ **3c Yellow Brown (Wet Printing)** Extremely well centered mint example of this distinctive shade with characteristic full white original gum, XF NH (Unitrade 108b) **180.00+**
- 393 ★ **3c Yellow Brown (Wet Printing)** A centered example with beautiful colour, full white original gum associated with this distinctive shade, VF+ NH (Unitrade 108b) **180.00+**
- 394 ★ **3c Brown (Dry Printing)** Superbly centered mint block, noticeably large margins, choice XF NH (Unitrade 108c) **480.00+**
- 395 ★ **3c Brown (Dry Printing)** A superb mint example, precisely centered with well-balanced large margins and full original gum, XF NH GEM (Unitrade 108c) **120.00+**



396



397

- 396 ★ **3c Brown (Dry Printing)** A choice mint single with constant plate flaw behind King's Head, prominent and very seldom seen as it was short-lived (on one of the last plates of the 3c brown). Ideal for the specialist, VF NH (Unitrade 108c + variety) **Est. 200.00+**
- 397 ★ **3c Brown (Dry Printing)** Mint single showing a distinctive and constant plate flaw behind King's Head, appealing and elusive, Fine OG (Unitrade 108c + variety) **Est. 100.00+**



- 398 ★ **3c Brown (Wet Printing)** Striking top margin mint single showing an unusually clear partial reverse printing offset variety on gum side - very scarce, Fine (Unitrade 108 variety) **Est. 200.00+**



-X399-



400

- 399 ★ **Three Cent Carmine (shades)** Neat lot comprised of Die I - carmine, deep rose carmine and pale rose carmine, last two being seldom seen as such, also the Die II carmine. All four with fresh colours, well centered, VF-XF NH (Unitrade 109, 109c, 109d + 109d shade) **540.00+**

- 400 ★ **3c Carmine, Die II** Premium mint example of the elusive die, choice, XF NH (Unitrade 109c) **210.00+**



X401



402

- 401 ★ **Four Cent (shades) Mint Blocks** Lot of six different shades from olive bistre (wet) to yellow ochre (dry), all mint NH, centering from Fine to Very Fine (Unitrade 110 shades) **Est. 500.00+**

- 402 ★ **4c Olive Bistre (Wet Printing)** A choice mint block of four, sheet margin at left, showing precise centering with unusually large margins for a wet printing block, lovely deep, radiant colour, VF NH (Unitrade 110) **960.00**

- 403 ★ **4c Olive Bistre (Wet Printing)** A precisely centered mint single with deep rich colour and full original gum, XF NH (Unitrade 110) *(Illustrated on Page 124)* **240.00+**



403



406



409



404



405

- 404 ★ **4c Olive Yellow (Wet Printing)** A lovely mint block, nicely centered with fabulous colour and bold impression, VF NH (Unitrade 110b) **1,080.00**
- 405 ★ **4c Golden Yellow (Wet Printing)** A visually striking mint block with true radiant colour, lower pair is NH, LH with almost Very Fine centering (Unitrade 110c) **1,120.00**
- 406 ★ **4c Golden Yellow (Wet Printing)** An extremely well centered example of this beautiful vivid shade, with full original gum; seldom encountered in such nice quality, VF+ NH (Unitrade 110c) **660.00**



407



408

- 407 ★ **4c Yellow Ochre (Dry Printing)** A brilliant fresh mint block, well centered with pristine original gum, VF+ NH (Unitrade 110d) **840.00**
- 408 ★ **4c Deep Olive Bistre (Wet Printing)** An attractive block in a deeper shade than usually found, nicely centered with full original gum, VF NH (Unitrade 110 shade) **960.00**
- 409 ★ **4c Olive Bistre (Wet Printing)** Mint single with **Major Kiss Print** resulting in **strong doubling of the right vertical frameline**; tiny perf thin lower left, an interesting printing variety, Fine OG (Unitrade 110 variety) *ex. "Lindemann" collection* **Est. 400.00+**





410



411

- 410 ★ **5c Blue** Superbly centered mint block, brilliant fresh colour, choice multiples of the five cent blue are very scarce, XF NH (Unitrade 111) **3,600.00**
- 411 ★ **5c Dark Blue** Nicely centered mint block with amazing deep rich colour, VF NH (Unitrade 111) **3,600.00**



- 412 ★ **5c Indigo** An impressive mint block of the distinctive first printing, intact perforations, deep radiant colour on fresh paper, faint hinge on lower left stamp only, other three stamps are NH. A difficult multiple to obtain in superior condition, VF (Unitrade 111a) **6,500.00**



- 413 ★ **5c Indigo** A selected mint example of this notoriously difficult stamp, characteristic colour and perforations associated with the elusive first printing, exceptionally fresh, nicely centered and with full unblemished original gum; a truly scarce stamp to find in such nice quality and missing from even advanced collections, VF NH (Unitrade 111a) **2,000.00**



414



415

- 414 ★ **5c Indigo** A beautiful mint example with distinctive dark rich colour associated with challenging early printing and especially with better centering, intact perforations and full original gum, VF NH (Unitrade 111a) **2,000.00**
- 415 ★ **5c Greyish Blue** A superb mint example in a beautiful shade, sharp impression on fresh paper, very well centered with pristine original gum; a great stamp, XF NH (Unitrade 111b) **1,050.00+**



- 416 ★ **Five Cent Violet (Shades) Mint Blocks** Lot of seven different shades / printings (eight blocks) from violet (wet) to redrawn frameline (dry), all mint NH (one LH at top), centering ranging from Fine to Very Fine (Unitrade 112 shades) **Est. 750.00+**



-X417-



418



419

- 417 ★ **5c Violet Admiral Shades / Printings** Selection of five different VF NH singles, includes wet printings violet with large margins, violet on thin paper, grey violet, rose violet, and dry printing violet with redrawn framelines. (Unitrade 112, 112a, 112c, 112i, 112ii cat. \$915) **Est. 350.00+**
- 418 ★ **5c Violet (Wet Printing)** A superb mint single, very well centered with noticeably large margins, bright fresh colour and full original gum, VF+ NH (Unitrade 112) **180.00+**
- 419 ★ **5c Violet on Thin Paper (Wet Printing)** An impressive mint single, well centered with unusually large margins, lovely rich colour and full pristine original gum; a superb stamp, XF NH GEM (Unitrade 112a) **150.00+**



420



422

- 420 ★ **5c Violet (Redrawn Framelines; Dry Printing)** Post office fresh mint, well centered with large margins and full original gum; a nice stamp, VF+ NH (Unitrade 112c) **210.00**



421



423

- 421 ★ **5c Grey Violet (Wet Printing)** A choice mint block in a lovely shade, well centered with pristine original gum, VF NH (Unitrade 112i) **780.00**
- 422 ★ **5c Grey Violet (Wet Printing)** Selected, fresh and well centered mint, a lovely shade, VF+ NH (Unitrade 112i) **195.00**
- 423 ★ **5c Rose Violet (Wet Printing)** An appealing mint block on this scarcer shade in a nice mint block, VF NH (Unitrade 112ii) **720.00**



- 424 ★ **Seven Cent Ochre (Shades) Mint Blocks of Four** Lot of seven different shades with subtle differences, all bare mint NH, centering ranges from Fine to Very Fine (Unitrade 113 shades) **Est. 600.00+**





425



426

- 425 ★ **7c Yellow Ochre** Well centered mint block of four with radiant colour and full original gum; a visually appealing shade, VF NH (Unitrade 113) **960.00**
- 426 ★ **7c Yellow Ochre** A well centered mint block of four in a lovely bright shade, lower pair is NH, VF (Unitrade 113) **640.00**



427



428



429

- 427 ★ **7c Yellow Ochre** An exceptionally fresh mint example, very well centered with balanced large margins, pristine original gum, XF NH (Unitrade 113) **240.00+**
- 428 ★ **7c Yellow Ochre** A superb mint single with lovely bright colour, precise centering and pristine original gum, XF NH (Unitrade 113) **240.00+**
- 429 ★ **7c Yellow Ochre** Spectacular mint example, precise centering with "boardwalk" size margins all around, brilliant colour and with full original gum, XF LH GEM JUMBO (Unitrade 113) **Est. 200.00+**



- 430 ★ **7c Yellow Ochre** An attractive mint block with margin at left, showing **Retouched vertical frameline** in upper right spandrel on lower left stamp, very well centered and with rich colour, VF NH (Unitrade 113, 113iii) **1,320.00**



- 431 ★ **7c Straw** An exceptional mint block with bright colour and impression associated with this first printing, unusually well centered with full pristine original gum; rarely seen in such superior quality, XF NH; 1983 Jim Hennok cert. (Unitrade 113b) ex. "*Lindemann*" collection **5,600.00**



432



433

- 432 ★ **7c Deep Straw** Upper right corner block with amazing deep and rich colour - an early printing, reasonably centered, tiny gum thin spot on top left stamp, otherwise never hinged. An excellent companion to the (brighter) straw shade. A very elusive multiple in a most distinctive shade, F-VF NH (Unitrade 113b, subsequent printing) **3,400.00**
- 433 ★ **7c Deep Straw** A precisely centered mint block of this early printing in a deeper shade, lovely rich colour on fresh paper, lower pair is NH. An appealing multiple displaying a beautiful shade, VF+ LH (Unitrade 113b shade) **3,500.00**



## ONE OF THE RAREST AND SOUGHT-AFTER SHADES OF THE ENTIRE ADMIRAL ISSUE



- 434 ★ 7c Sage Green** A fabulous mint block of four of this rare shade, superior centering, displaying true deep colour and full original gum, minute natural gum inclusion on top left stamp, NEVER HINGED. One of the key shades of the entire Admiral issue and virtually non-existent as a VF NH block; 1995 Greene Foundation cert. (as old number 113ii identified as "sage green shade") (Unitrade 113c)

**12,000.00**



- 435 ★ 7c Pale Sage Green** A superb mint block of this sought-after shade, sheet margin at left and full pristine original gum. An ideal companion to the deeper sage green shade, VF NH (Unitrade 113c shade)

**12,000.00**





439



436



440

- 436 ★ **7c Pale Sage Green** An attractive mint block of this desirable shade, well centered; hinge remnant on top pair, lower pair with pristine NH original gum. A rare block of this sought-after shade, VF OG / NH; 1983 Jim Hennok cert. (Unitrade 113c shade) *ex. "Lindemann" collection* **7,500.00**



437



438

- 437 ★ **7c Pale Sage Green** A well centered mint block of four in an appealing pastel shade, lower pair is NH, VF OG (Unitrade 113c) **7,500.00**
- 438 ★ **7c Bright Sage Green** A remarkable mint block with bright colour, quite well centered; folded horizontally with a few split perforations at left, full immaculate original gum. A rare multiple of this appealing and distinctive shade, F-VF NH (Unitrade 113c shade) **7,250.00**
- 439 ★ **7c Sage Green** Premium mint example of this elusive shade, seldom seen with such superior centering, brilliant colour and full original gum. A beautiful stamp that ranks as one of the toughest Admiral shades, VF+ NH (Unitrade 113c) **3,000.00**
- 440 ★ **7c Sage Green** A selected mint example of this challenging stamp, displaying deep rich colour, in well-above average condition for this elusive shade, well centered with full original gum, VF NH (Unitrade 113c) **3,000.00**



441



445



448

- 441 ★ **7c Sage Green** A remarkably well centered mint block of this sought-after shade, large part original gum; couple gum thins in no way detract a key shade of the Admiral issue, VF OG (Unitrade 113c cat. \$3,000) **Est. 750.00+**



442



443



444

- 442 ★ **7c Deep Sage Green** A nicely centered mint hinged example of this elusive shade, VF OG; 1980 Greene Foundation cert. (Unitrade 113c) *ex. Robert Bayes* **750.00**
- 443 ★ **7c Pale Sage Green** A well centered mint example of this scarce, appealing, VF LH (Unitrade 113c) **750.00**
- 444 ★ **7c Pale Sage Green** A choice mint example of this distinctive shade, brilliant fresh, VF LH (Unitrade 113c) **750.00**
- 445 ★ **7c Greenish Yellow** A well centered mint block with fabulous rich colour, a deeper shade of this elusive printing, with full original gum. A scarce block, VF VLH (Unitrade 113iv) **1,600.00**



446



447

- 446 ★ **7c Yellow Ochre** A remarkably well centered single in a particularly bright shade - having yellow as the predominant colour; a nice stamp for the shade enthusiast, XF NH (Unitrade 113 shade) **Est. 250.00+**
- 447 ★ **7c Deep Yellow Ochre** A choice mint example in a noticeably deeper shade, well centered with full original gum; an appealing shade, VF+ NH (Unitrade 113 shade) **Est. 250.00+**
- 448 ★ **7c Ochre** An attractive mint block in an abnormal and no doubt very scarce dull shade - predominant colour being ochre to dramatic effect, full original gum, VF LH (Unitrade 113 shade) **Est. 250.00+**



449



450

- 449 ★ **7c Red Brown (Wet Printing)** Very well centered mint block with deep rich colour and full original gum, VF NH (Unitrade 114b) **540.00**
- 450 ★ **7c Red Brown (Dry Printing)** Superb margined mint single with constant diagonal line in "N" of CENTS plate variety, pristine fresh and choice, XF NH JUMBO (Unitrade 114v) **450.00+**



- 451 ★ **8c Blue** A post office fresh mint block, extremely well centered with huge margins; a beautiful block, XF NH (Unitrade 115) **720.00**



452



453



454



455

- 452 ★ **8c Blue** A premium mint example, well-balanced large margins and full original gum; a great stamp, XF NH GEM (Unitrade 115) **180.00+**
- 453 ★ **8c Blue** Post office fresh mint, well centered with large margins, VF+ NH (Unitrade 115) **180.00**
- 454 ★ **8c Light Blue** A superb mint example with balanced large margins, gorgeous fresh colour and pristine original gum, XF NH GEM (Unitrade 115i) **210.00+**
- 455 ★ **8c Light Blue** An extremely well centered single with pastel-like colour, fresh and choice, XF NH (Unitrade 115i) **210.00+**





- 456 ★ **10c Brown Purple** A post office fresh mint block of eight showing an unusual reddish tinge, well centered with full unblemished original gum. Seldom encountered in such a large multiple, F-VF NH (Unitrade 116 shade) **5,760.00**



- 457 ★ **10c Plum** A beautiful block of this challenging stamp, deep radiant colour and nicely centered, VF NH (Unitrade 116) **4,800.00**

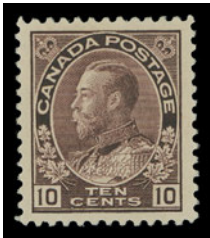


458



459

- 458 ★ **10c Brown Purple** A visually striking mint block in a distinctive brighter shade than we are accustomed to seeing, fresh NH with nearly VF centering (Unitrade 116 shade) **2,880.00**
- 459 ★ **10c Brown Purple** A beautifully centered mint block in a richer shade than normally encountered, full original gum. A lovely shade in a superior centered multiple, XF LH (Unitrade 116) **1,600.00**



460



461

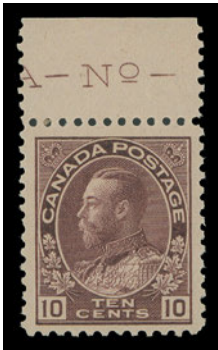


462



465

- 460 ★ **10c Plum** Superbly centered mint in a noticeably brighter shade than normally encountered, full original gum; an attractive stamp in superior quality, XF NH (Unitrade 116) **1,200.00+**
- 461 ★ **10c Brown Purple** A selected, well centered mint single in an appealing bright shade, VF NH (Unitrade 116 shade) **1,200.00**
- 462 ★ **10c Plum** An impressive large margined mint single, well centered with gorgeous fresh colour and full original gum, VF NH JUMBO (Unitrade 116) **1,200.00**



- 463 ★ **10c Reddish Purple** A beautiful mint example with pastel colour and bright impression associated with this early and elusive printing, superior centering, portion of plate imprint in margin, LH in margin, stamp with full unblemished original gum; difficult to find, VF NH (Unitrade 116a) **1,800.00**



464



466

- 464 ★ **10c Reddish Purple** Very appealing and unusually well centered mint block of the first printing - distinctive shade and impression unlike the later printings, minor gum soak at lower right, otherwise with full original gum; a scarce block, VF LH (Unitrade 116a) **1,800.00**
- 465 ★ **10c Light Reddish Purple** Very well centered mint in an unusual paler version of the scarcer reddish purple shade, one shorter perf at left, full original gum. A striking shade unlike any we have seen, VF NH (Unitrade 116a shade) **1,200.00+**
- 466 ★ **10c Deep Reddish Purple** A fabulous mint block, lovely and fresh with exceptionally deep colour, lower pair is NH. A great block for the shade enthusiast, F-VF LH (Unitrade 116 shade) **Est. 600.00+**





X467



468



469



470



471

- 467 ★ **Ten Cent Blue (Shades) Mint Blocks** Lot of five different shades (six blocks) from pale blue (wet) to blue (dry), all are mint NH, centering ranging from Fine to Very Fine (Unitrade 117 shades)  
**Est. 750.00+**
- 468 ★ **10c Blue (Wet Printing)** A beautifully centered mint example, brilliant fresh colour and full pristine original gum, choice, XF NH (Unitrade 117) **240.00+**
- 469 ★ **10c Blue (Dry Printing)** Choice mint, very well centered with large margins, rich colour and full original gum, XF NH (Unitrade 117a) **210.00**
- 470 ★ **10c Light Blue (Wet Printing)** Well centered mint with gorgeous fresh colour, VF NH (Unitrade 117ii) **240.00**
- 471 ★ **10c Dark Blue (Wet Printing)** A remarkable mint example in a darker shade than normally encountered, precisely centered with full original gum; a great stamp for the specialist, XF NH (Unitrade 117 shade) **Est. 250.00+**



472



473



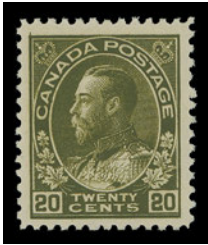
474

- 472 ★ **10c Bistre Brown** A well centered and brilliant fresh mint block with full original gum, VF+ NH (Unitrade 118) **720.00**
- 473 ★ **10c Bistre Brown** Nicely centered mint with fresh bright colour, VF+ NH (Unitrade 118) **180.00**
- 474 ★ **10c Yellow Brown** A premium mint block with exceptional centering, bright colour and full original gum, choice XF NH (Unitrade 118b) **960.00+**





X475



-X476-



- 475 ★ **Twenty Cent (Shades) Mint Blocks of Four** Four different shades / printings: includes wet printings 20c deep olive green F-VF NH and 20c grey green Fine+ VLH (one stamp NH); then dry printings, 20c olive green and 20c olive green (retouched frameline - Plate 9) both VF NH (Unitrade 119 shades)  
**Est. 1,250.00+**
- 476 ★ **Twenty Cent Admiral Printings / Shades** Selection of four different including wet printings dark olive green VF NH, sage green F-VF NH, grey green (hinged in margin) stamp VF NH and dry printing olive green with retouched vertical frameline in upper right spandrel, VF NH (Unitrade 119b, 119c, 119d, 119iv cat. \$3,065)  
**Est. 1,000.00+**



477



478



479



480

- 477 ★ **20c Olive Green (Dry Printing)** An exceptionally well centered mint block, post office fresh with full pristine original gum, XF NH (Unitrade 119)  
**1,920.00+**
- 478 ★ **20c Olive Green (Dry Printing)** A premium mint example with exceptional centering, fresh colour and pristine original gum; a great stamp in respects, XF NH (Unitrade 119)  
**480.00+**
- 479 ★ **20c Dark Olive Green (Wet Printing)** Nicely centered mint with amazing rich colour - quite striking, with full original gum, VF NH (Unitrade 119c)  
**660.00**
- 480 ★ **20c Dark Olive Green (Wet Printing)** A premium mint single in a noticeably darker shade than normally encountered, well centered with immaculate original gum, VF NH (Unitrade 119c)  
**600.00**



481



482

- 481 ★ **20c Greyish Green (Wet Printing)** A superb mint single with etched out printing order "101" in margin, a remarkable shade with large margins and full immaculate original gum, XF NH GEM (Unitrade 119d) **1,200.00+**
- 482 ★ **20c Grey Green (Wet Printing)** A marvelous mint example of this difficult early printing, unusually well centered, exceptional colour and sharp impression and full pristine original gum; recognized as one of the most difficult early printing to find in nice condition, VF NH (Unitrade 119d) **1,200.00**



483



484

- 483 ★ **20c Grey Green (Wet Printing)** An unusually well centered mint block of this distinctive early printing; some blunt perfs at top left, very fresh with superior centering and full original gum, VF LH (Unitrade 119d) **1,200.00**
- 484 ★ **20c Olive Green (Dry Printing)** An extremely well centered mint block showing the retouched vertical frameline in upper right spandrel (Plate 9), printed in an unusual brighter shade than normally seen - most appealing and with full original gum, VF+ LH (Unitrade 119iv) **720.00**



- 485 ★ **50c Admiral Shades / Printings** Selection of four mint singles, includes wet printings black VF centered, trace of a hinge mark, brown black F-VF NH, silver black F-VF NH and dry printing black brown VF NH (Unitrade 120-120ii cat. \$2,770) **Est. 750.00+**



486



487

- 486 ★ **50c Black Brown (Re-engraved; Dry Printing)** A choice mint block of four with post office fresh colour, very well centered and with full pristine original gum, VF+ NH (Unitrade 120) **1,560.00**
- 487 ★ **50c Black Brown (Re-engraved; Dry Printing)** A superb mint example with eye-arresting centering, brilliant fresh colour and full original gum, choice, XF NH GEM (Unitrade 120) **390.00+**

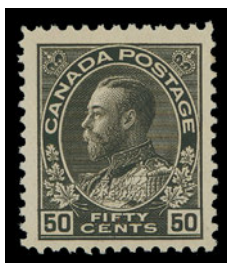


- 488 ★ **50c Black (Wet Printing)** An impressive upper left corner margin block of ten showing portion of plate imprint "OTTAWA" (No. 1) at upper right, radiant colour and impression on fresh paper; some perf separation and couple light hinge marks in the ungummed margin at top, all ten stamps are with full original gum and NEVER HINGED. A rarely seen multiple of this difficult early shade, F-VF NH (Unitrade 120a) ex. Fred Goodhelpsen (June 2004; Lot 2330) **12,875.00**





- 489 ★ **50c Black (Wet Printing)** A remarkably fresh and unusually well centered block of four of this challenging early printing, fabulous colour and bright impression; light owner's handstamp on lower left stamp, hinged in selvedge only leaving all stamps with full original gum, NEVER HINGED. Rarely encountered block in such superior condition, VF NH (Unitrade 120a) **8,800.00**



- 490 ★ **50c Black (Wet Printing)** A post office fresh mint single with remarkably deep colour, likely the deepest shade one can hope for to find on this denomination, nicely centered with large margins and full original gum, never hinged. An elusive and desirable shade that is truly scarce in such nice condition, VF NH (Unitrade 120a) **2,200.00**



- 491 ★ **50c Black (Wet Printing)** A remarkably well centered mint block of four of this difficult early printing, fabulous colour, sharp impression and full original gum; a beautiful block of this elusive stamp, VF LH (Unitrade 120a) *ex. Robert Bayes (private treaty 1996)* **2,200.00**



- 492 ★ **50c Silver Black (Wet Printing)** An impressive mint block of four - one of the scarcest and most distinctive shades of the entire Admiral issue, especially desirable with such superior centering, true bright colour and full original gum. Finding a finer block will be a very challenging task, VF LH (Unitrade 120i) **2,000.00**



493



496

- 493 ★ **50c Brown Black (Wet Printing)** A post office fresh mint example of this challenging stamp, nicely centered with true colour and full immaculate original gum; much scarcer than the dry printing, VF NH (Unitrade 120ii) **1,050.00**



494



495

- 494 ★ **\$1 Orange (Dry Printing)** A well centered mint block with striking vivid colour and full original gum; as beautiful as the day it was printed, VF NH (Unitrade 122) **1,800.00**
- 495 ★ **\$1 Orange (Dry Printing)** A very well centered mint block with lovely bright fresh colour, top left stamp LH leaving three NH, VF (Unitrade 122) **1,500.00**
- 496 ★ **\$1 Orange (Dry Printing)** A superb margined example, extremely well centered with post office fresh colour, a choice XF NH GEM; 1992 Greene Foundation cert., 2009 PF cert. (Graded XF 90 J) (Unitrade 122) **450.00+**



- 497 ★ **\$1 Deep Orange (Wet Printing)** An exceptional mint block of four of the elusive early printing, characteristic rich colour and strong impression associated with the wet printing, superb centering, intact perforations and full immaculate original gum, NEVER HINGED. A rarely offered multiple in premium quality, it would be a very difficult task to find another similar block, ideal for the collector seeking the highest quality attainable, XF NH (Unitrade 122b) ex. "*Lindemann*" collection **6,400.00**



- 498 ★ **\$1 Deep Orange (Wet Printing)** Post office fresh mint block of four of the elusive early printing, in a very deep shade and strong impression, with full unblemished original gum; an attractive block of this difficult stamp, F-VF NH (Unitrade 122b) **4,000.00**



499



500

- 499 ★ **\$1 Deep Orange (Wet Printing)** A remarkable mint single of this challenging early printing, with superior centering, deep rich colour and full pristine original gum, never hinged. An unassuming stamp that is very difficult to find in such premium quality, XF NH (Unitrade 122b) **1,600.00+**
- 500 ★ **\$1 Deep Orange (Wet Printing)** A post office fresh mint example of this elusive shade, nicely centered and showing characteristic deep colour, strong impression and full original gum; one of the most difficult Admiral shades to find in exceptional condition, VF NH (Unitrade 122b) **1,600.00**





- 501 ★ **\$1 Bright Orange (Dry Printing)** A well centered mint block in a very distinctive brighter shade, lovely pastel-like impression, sheet margin at right and full original gum. An appealing shade, VF+ NH; cat. for normal shade. (Unitrade 122 shade) **1,800.00+**

PROVISIONAL SURCHARGES



- 502 ★ **2c on 3c Carmine, Die I One-Line Surcharge** Selected mint singles, a normal stamp plus two different major shifts of the surcharge at centre and at top respectively, all three VF NH (Unitrade 139, 139i) **920.00**



-503-

-504-

- 503 ★ **2c on 3c Provisional Surcharges** Set of two with **double surcharge** variety; two-line surcharge stamp has straight edge at foot, VF LH duo (Unitrade 139i, 140a) **750.00**
- 504 ★ **2c on 3c Provisional Surcharge** One-Line and Two-Line **double surcharges**, scarce and fresh mint singles, F-VF OG (Unitrade 139b, 140a) **575.00**



505



506

- 505 ★ **2c on 3c Carmine, Die II, One-Line Surcharge** A rare mint block of the elusive die, reasonably centered with large margins; very few multiples of Die II survive in any condition, F-VF LH; 1991 Greene Foundation cert. (Unitrade 139c cat. as hinged) **3,600.00**
- 506 ★ **2c on 3c Carmine, Die II, One-Line Surcharge** A nice mint example of the very scarce die, centered a bit low as many are, light crease in margin only, stamp is fresh with deep rich colour and full original gum; F-VF NH; clear 1993 Greene Foundation cert. (Unitrade 139c) **1,935.00**



- 507 ★ **2c on 3c Carmine, Die I, One-Line Surcharge** An appealing duo of well centered mint blocks, both show a major shift of the surcharge, first block shift horizontally (about 9mm) and second block shifted vertically with surcharge placed over the perforations between stamps, latter with natural straight edge at top, small "KB" (Kasimir Bileski) guarantee backstamps. Both fresh and VF NH (Unitrade 139i) **2,880.00**
- 508 ★ **2c on 3c Carmine, Die I, One-Line Surcharge** A well centered mint block with surcharge noticeably shifted and slanting, lower pair is NH, VF (Unitrade 139i) *(Illustrated on Page 145)* **1,080.00**
- 509 ★ **2c on 3c Carmine, Die I One-Line Surcharge** Three selected mint examples with different shifts of the surcharge, VF NH (Unitrade 139i) *(Illustrated on Page 145)* **1,080.00**
- 510 ★ **2c on 3c Carmine, Die I One-Line Surcharge** Selection of three different major shifts of the surcharge; one with straight edge at right mint LH, other two are VF NH (Unitrade 139i) *(Illustrated on Page 145)* **810.00**
- 511 ★ **2c on 3c Carmine, Die I, One-Line Surcharge** A nice mint block showing a major shift of the surcharge, lower pair is NH, F-VF LH (Unitrade 139i) *(Illustrated on Page 145)* **765.00**
- 512 ★ **2c on 3c Carmine, Die I, One-Line Surcharge** A beautiful mint block showing a dramatic slanting shift of the surcharge, well centered and appealing, VF LH (Unitrade 139i) *(Illustrated on Page 145)* **720.00**





-509-



514



-510-



508



511



512



513

- 513 ★ 2c on 3c Carmine, Die I, One-Line Surcharge A well centered mint block with the surcharge strikingly shifted - positioned almost completely in the margins between stamps; each with "KB" (K. Bileski) backstamp. A visually appealing block, VF LH (Unitrade 139i) 720.00
- 514 ★ 2c on 3c Carmine, Die I One-Line Surcharge Well centered mint with radiant colour, prominent shift of the surcharge showing portion of a second surcharge at top, VF NH; 1993 Greene Foundation cert. (Unitrade 139i) 360.00





515



516

- 515 ★ **2c on 3c Carmine, Die I, One-Line Surcharge** A well centered mint block of the surcharge **essay**, top pair with noticeably larger font has horizontal crease, VF appearance (Unitrade 139v cat. \$2,500)  
Est. 500.00+

- 516 ★ **2c on 3c Carmine, Two-Line Surcharge** A superb mint block, radiant fresh colour and full original gum, XF NH (Unitrade 140)  
400.00



517



518

- 517 ★ **2c on 3c Carmine, Two-Line Surcharge** An attractive mint block of the **double surcharge** variety, nicely centered, very light hinge on top left stamp leaving three NH, VF; 1996 Greene Foundation cert. (Unitrade 140a)  
2,450.00
- 518 ★ **2c on 3c Carmine, Two-Line Surcharge** A post office fresh mint block of the **double surcharge** variety - clear side-by-side impressions, bright colour and full pristine original gum, NH and almost VF; a very scarce block. (Unitrade 140a)  
2,000.00+



- 519 ★ **2c on 3c Carmine, Two-Line Surcharge** A nicely centered, fresh mint single with **double surcharge** variety, clear side-by-side impressions; hard to find in such nice condition, VF NH (Unitrade 140a)  
700.00



521



-520-



524



523



- 520 ★ 2c on 3c Carmine, Two-Line Surcharge Well centered mint singles with **double surcharge** (VF) and with **triple surcharge** (F-VF); both fresh and lightly hinged (Unitrade 140a, 140b) **625.00**
- 521 ★ 2c on 3c Carmine, Two-Line Surcharge A very well centered mint block in a lovely bright shade, showing a remarkable triple surcharge variety - three clear side-by-side impressions, light natural gum skip on right pair, lower pair NH; a rare block ideal for exhibition, VF; 1983 BPA cert. (Unitrade 140b) **2,100.00**



522



525

- 522 ★ 2c on 3c Carmine, Two-Line Surcharge Brilliant fresh and mint hinged block with **triple surcharge** variety - three clear impressions - dramatic and very scarce, F-VF OG (Unitrade 140b) **1,100.00**
- 523 ★ 2c on 3c Carmine, Two-Line Surcharge A brilliant, fresh mint example showing a striking **triple surcharge** variety, NH with nearly VF centering (Unitrade 140b) **500.00**
- 524 ★ 2c on 3c Carmine, Two-Line Surcharge A fresh mint single showing the striking **double surcharge** variety with **one surcharge inverted**, F-VF NH; 1987 Greene Foundation cert. (Unitrade 140c) **775.00+**
- 525 ★ 2c on 3c Carmine, Two-Line Surcharge Lower left corner block with natural straight edge at foot, showing top pair with double surcharge - one inverted, lower pair normal surcharged stamps, some perf separation between lower pair which is NH. A most striking se-tenant block with and without the variety and quite possibly the **ONLY KNOWN**. An exceptional block for the specialist, Fine LH; 1958 PF cert. (Unitrade 140c + variety) *ex. Harry Lussey, June 1981; Lot 1318, "Lindemann" collection (private treaty, circa. 1996)* **Est. 1,500.00+**
- 526 F **Fakes of the One-Line and Two-Line Surcharges** Group of 11 fake items including inverts, doubles and double with one inverted; three of the two-line surcharges backstamped Andre Frodel but all allegedly done by MacMaster. Also five genuine stamps for comparison. *ex. Walske forgery collection (Illustrated on Website)* **Est. 300.00**





WAR TAX



- 527 ★ 1c Green War Tax A very well centered mint block along with a similarly choice block in a distinctive brighter shade of green, both with pristine original gum, XF NH (Unitrade MR1 + shade) 960.00



-528-



-529-



- 528 ★ 1c Green War Tax Choice mint along with a similar quality single in a bright shade of green; a nice duo, VF+ NH (MR1 + shade cat. as normal) 240.00
- 529 ★ 1c & 2c War Tax Very well centered mint singles - 1c has remarkably large margins, XF NH (Unitrade MR1-MR2) 240.00+



-530-



-531-

- 530 ★ 2c Carmine War Tax A fresh nicely centered mint block along with a similar quality block in the rose carmine shade, both with full original gum, VF NH (Unitrade MR2, MR2a) 1,080.00
- 531 ★ 2c War Tax Both listed shades - carmine and rose carmine in selected quality, VF+ NH (Unitrade MR2, MR2a) 270.00





X532



X533



X536

- 532 ★ 5c, 20c & 50c WAR TAX Overprint in Black or Red (50c) Reasonably centered mint singles with fresh colours and full original gum, F-VF NH (Unitrade MR2B-MR2D) **2,600.00**
- 533 ★ 5c, 20c & 50c WAR TAX Overprint in Black or Red (50c) A beautiful fresh mint set of three unusually well centered singles; small hinge remnant on 20c, others LH, VF (Unitrade MR2B-MR2D) **1,080.00**



- 534 ★ 5c, 20c & 50c WAR TAX Overprint in Black or Red (50c) A scarce set of three mint blocks of four; the 5c and 20c are F-VF centered with lower pairs NH, the 50c is Fine NH; of note the upper left 5c shows partial doubling of "WAR" overprint at right. (Unitrade MR2B, MR2C, MR2D cat. \$4,735+) **Est. 1,000.00+**



- 535 ★ 5c, 20c & 50c INLAND REVENUE WAR TAX Overprint in Black or Red (50c) An elusive set of three mint blocks, each with two stamps NH; the 50c shows a nearly full Plate 1 imprint, F-VF (Unitrade MR2Bi, MR2Ci, MR2Di cat. \$6,075) **Est. 1,500.00+**
- 536 ★ 5c, 20c, 50c INLAND REVENUE WAR TAX Overprint in Black or Red (50c) Nicely centered mint set of three; key 50c is very lightly hinged, VF OG (Unitrade MR2Bi-MR2Di) **1,000.00**



537



538



539

- 537 ★ **5c Blue with WAR TAX Overprint in black** A remarkably choice mint example of this difficult stamp, nicely centered with noticeably large margins, deep fresh colour and full unblemished original gum; one of the toughest Admiral stamps to find in selected quality, VF+ NH; 2010 Greene Foundation cert. (Unitrade MR2B) **1,600.00**
- 538 ★ **5c Blue with INLAND REVENUE WAR TAX Overprint in black** A superbly centered mint block in an unusually bright shade, folded horizontally between pairs, a few split perfs at foot and hint of gum disturbance on top left stamp, otherwise with full original gum, never hinged. A rare block to find with superior centering, VF+ (Unitrade MR2Bi) **3,900.00**
- 539 ★ **5c Blue with INLAND REVENUE WAR TAX Overprint in Black** Post office fresh and nicely centered mint, full immaculate original gum; an elusive stamp, VF NH (Unitrade MR2Bi) **1,200.00**



540



541

- 540 ★ **20c Olive Green with WAR TAX Overprint in black** A selected quality mint block with rich colour, couple minor natural inclusions, fresh and beautifully centered, VF+ NH (Unitrade MR2C) *ex. "Lindemann" collection* **2,880.00**
- 541 ★ **20c Olive Green with INLAND REVENUE WAR TAX Overprint in black** An exceptional mint block of four, displaying superb centering, deep rich colour and full pristine original gum, never hinged. One would need an extensive search to find a nicer block, very elusive in such top-quality, XF NH (Unitrade MR2Ci) **3,200.00+**
- 542 ★ **50c Brownish Black with WAR TAX Overprint in Red** A very well centered mint single with brilliant fresh colour, light natural bends, attractive and VF NH. (Unitrade MR2D) **2,000.00**

(Illustrated on page 151)





542



543



-544-



- 543 ★ **50c Black with INLAND REVENUE WAR TAX Overprint in Red** A lovely fresh mint single, VF LH (Unitrade MR2Di) **500.00**
- 544 ★ **2c+1c War Tax, Die I** Two distinctive shades - in carmine and in rose red, former with impressive large margins, both well centered with pristine original gum; an appealing duo, VF-XF NH (Unitrade MR3, MR3b) **400.00**



- 545 ★ **2c+1c Carmine, Die I War Tax** Selected mint blocks in carmine, rose red and deep rose red, each with distinctive beautiful colour and full original gum; a spectacular group, VF+ NH (Unitrade MR3, MR3b, MR3b shade) **2,520.00**



- 546 ★ **2c+1c Carmine, Die II War Tax** An attractive mint corner block, remarkably well centered and printed in a very distinctive deep shade typical of this elusive die, small negligible mark on gum of lower left stamp, otherwise with full original gum, never hinged. A challenging block to find this nice, VF NH; catalogued as one mint OG and three stamps NH. (Unitrade MR3a) *ex. Michael Roberts (December 2006; Lot 1279)* **4,000.00**





- 547 ★ **2c+1c Dark Carmine, Die II War Tax** A remarkable mint block of the scarcer die, well centered with large margins, characteristic dark rich colour, lower pair very lightly hinged. A scarce block with such excellent centering, VF OG (Unitrade MR3a) **1,600.00**



548



549



550

- 548 ★ **2c+1c Dark Carmine, Die II War Tax** A well centered mint example in the characteristic deeper shade associated with this scarcer die, VF NH (Unitrade MR3a) **1,200.00**
- 549 ★ **2c+1c Dark Carmine, Die II War Tax** A highly select mint example of the elusive die, very well centered with full original gum; a choice stamp, VF+ NH (Unitrade MR3a) **1,200.00**
- 550 ★ **2c+1c Dark Carmine, Die II War Tax** An attractive mint single in a deeper than usual shade, well centered with full original gum, VF NH (Unitrade MR3a) **1,200.00**



551



552



-553-



- 551 ★ **2c+1c Rose Red, Die I War Tax** An exceptional mint single in a distinctive bright shade, very well centered and full pristine original gum, XF NH GEM (Unitrade MR3b) **225.00+**
- 552 ★ **2c+1c Rose Red, Die I War Tax** Post office fresh and well centered, lovely bright colour, VF+ NH (Unitrade MR3b) **225.00**
- 553 ★ **2c+1c Dark Carmine, Die II and Dark Yellowish Brown, Die I War Tax** Two selected mint examples of the scarcer dies, both very well centered within noticeably large margins, VF LH (Unitrade MR3a, MR4a) **1,750.00**



- 554 ★ **2c+1c Brown, Die II War Tax** Extremely well centered and fresh mint blocks of four in both the brown and yellow brown shades, full pristine original gum; a lovely duo, XF NH (MR4, MR4i) **960.00**



- 555 ★ **2c+1c Dark Brown, Die II War Tax** Along with another in a lovely warm yellow brown shade, both well centered with pristine original gum, VF-XF NH (Unitrade MR4, MR4i shade) **240.00+**



- 556 ★ **2c+1c Brown (shades) Die II** Four different shades from dark brown to bright yellow brown, each is well centered with full original gum; tone has a natural gum inclusion, VF NH (Unitrade MR4, MR4i) **480.00**

## JOIN THE BRITISH NORTH AMERICA PHILATELIC SOCIETY

*BNA Topics, quarterly journal*

Benefits include annual convention and exhibition, more than 20 specialized study groups, regional groups in many cities in Canada and the United States, online sales circuits, the Horace Harrison online library and a generous discount on BNAPS book purchases.

Contact: **Andy Ellwood, Secretary**  
 10 Doris Avenue  
 Gloucester, ON K1T 3W8  
 secretary@bnaps.org  
 website: <http://www.bnaps.org>

**BNAPS** – *The Society for Canadian Philately*





- 557 ★ **2c+1c Dark Yellow Brown, Die I War Tax** An impressive mint block of this sought-after Admiral stamp, well centered with left pair exceptionally so with large margins, characteristic darker colour associated with this scarcer die, LH at top leaving lower pair NEVER HINGED. A very small number of blocks survive, VF LH / NH (Unitrade MR4a) **10,800.00**



- 558 ★ **2c+1c Dark Yellow Brown, Die I War Tax** A very nice mint example of the scarcer die, precise centering, post office fresh colour and full pristine original gum, never hinged. A very difficult stamp to acquire in this quality, VF+ NH (Unitrade MR4a) **4,050.00**



- 559 ★ **2c+1c Dark Yellow Brown, Die I War Tax** A very nice mint example of this difficult Admiral stamp - the scarce die, noticeably large margins and well centered within, true rich colour and full pristine original gum, never hinged. On the short-list of the most difficult Admiral stamps to find in nice quality, VF NH (Unitrade MR4a) **4,050.00**





- 560 ★ **2c+1c Yellow Brown, Die I War Tax** An appealing example of this elusive stamp, superior centering and in a brighter shade than normally encountered, full original gum that has never been hinged; a key stamp on the short-list of the most difficult stamps of the entire Admiral issue, VF NH; 2016 Greene Foundation cert. (Unitrade MR4a) **4,050.00**



561



562

- 561 ★ **2c+1c Dark Yellowish Brown, Die I War Tax** An impressive mint example of the scarcer die, quite well centered with large margins, exceptionally fresh with full immaculate original gum, NH and almost Very Fine centering (Unitrade MR4a) **2,425.00**
- 562 ★ **2c+1c Dark Yellowish Brown, Die I War Tax** An exceptional mint example of this challenging stamp, superb centering with noticeably large margins, characteristic darker colour associated with the scarcer die, radiant colour with large part original gum. A remarkable stamp, XF LH GEM (Unitrade MR4a) **1,350.00+**



563



564



565

- 563 ★ **2c+1c Carmine, Die I, Perf 12x8** Remarkably fresh block, well centered with large margins, intact perforations and full unblemished original gum; scarce this nice, XF NH (Unitrade MR5) **960.00+**
- 564 ★ **2c+1c Carmine, Die I, Perf 12x8** A post office fresh mint block, well centered with wide margins and pristine original gum; choice multiples of this are difficult to find, VF+ NH (Unitrade MR5) **960.00**
- 565 ★ **2c+1c Carmine, Die I, Perf 12x8** An outstanding mint example surrounded by enormous margins, very well centered with intact perforations, bright colour and with full pristine original gum; an absolute gem, XF NH JUMBO (Unitrade MR5) **240.00+**



BALANCE OF COLLECTION - SINGLES AND MULTIPLES



566 ★ **Fabulous Collection of Mint Blocks of Four** A remarkable lot of nearly 200 mint blocks, collected for shades and different printings - a myriad of listed and non-listed shades, a large percentage are well centered, often hinged on top pair only. Several strong areas are shown such as #111 with eight blocks, #113 including elusive sage green shade (two blocks), #116 eight blocks, #119 eight blocks, #120 six blocks, #126c NH, #128ai NH, #139v block, War Tax with 23 blocks, etc. The odd gum flaw noted, a valuable lot which has taken many years to assemble, many of the shades being very difficult to find in multiples, Fine to Very Fine. Enormous catalogue value. **Est. 10,000.00+**





567 ★ **Balance Collection of Mint Blocks** An impressive lot of over 250 blocks of four, a few are larger multiples. A very strong showing of shades especially on lower denominations including excellent representation of better stamps such as #111 (6), #116 (4), #119 (11), #120 (4), etc. Elusive shades throughout; overall quality ranges from Fine disturbed OG to VF-XF with one or two stamps NH. A valuable assembly worth a close look. **Est. 7,500.00+**



568 ★ **Balance of Mint NH Blocks** A large, clean assortment of nearly 200 blocks (a few larger than blocks of four), all selected mint NH; duplication in places, includes a truly remarkable range of shades especially on the #104's and #106's including early printings, noted better NH blocks of #111 (5), #112 (7), #122 (4), imperforates, surcharges and war tax. The odd gum bend flaw but includes numerous VF NH blocks. A useful lot for any specialist or dealer; worth close inspection. **Est. 7,500.00+**





- 569    The Collection of Used Multiples An exceptional collection offered intact, hundreds of blocks of four, pairs, coil pairs, paste-up pairs, elusive strips of four, imperforates, surcharges and war tax, collected for shades, printings and cancels. Also an unusual assortment of City precancel blocks. Excellent representation of often difficult coil pairs and strips, many of which have selected centering and postmarks, a valuable group that would take years to assemble. Condition from mixed to mainly F-VF; a worthwhile lot for a specialist. **Est. 2,000.00+**



- 570 ★ Large Assortment of Mint Pairs, Etc.** Dozens of regular issues in pairs from 1 cent to \$1, noting better shades and War Tax; imperforate pairs including MR4b (5), MR4ii, MR4iii, also provisional surcharges 139v essay pair, 140b triple surcharge block of four (somewhat stained but with clear 1972 RPS cert.). Mixed condition in places but numerous VF NH stamps are to be found. **Est. 2,500.00+**



- 571 ★ Balance of Mint NH Singles** An excellent assortment of over 550 stamps with a wide range of shades and printings, particularly on the 1c to 3c values. A very high percentage are NH including first printings and scarcer shades, also noted various plate number mint singles of the 2c carmine (shades), some 1c-3c imperforates, provisional surcharges, etc. A "goldmine" for shades; despite some flaws and gum problems in places mostly clean and NH, F-VF; worth close inspection **Est. 5,000.00+**



- 572 ★ Admiral Shades - Highly Select Mint Singles** Organized on stockpages by shade and printing, 140 stamps, including more subtle shades. All in sound mint hinged condition and hand-picked for better centering, many being extremely fine large margined examples. Noted all the scarcer listed shades, first printings, etc. A wonderful lot for the specialist, high catalogue value. **Est. 2,500.00+**



- 573 ★ Collection of Mint Singles** Complete from #104 to #122, plus provisional surcharges; includes virtually all the Unitrade listed shades, different dies, plus a few non-listed shades (or the odd duplicate). Mostly very well centered, a few with disturbed OG from previous hinging, but also noted some NH examples. A nice collection displaying a very high percentage of the of shades and printings found on the Admiral issue. More importantly all appear sound and carefully selected for better VF to XF centering **Est. 1,500.00+**

- 574 ★ Balance of Mint / NH Singles** An extensive lot of a few hundred stamps from 1c green to \$1 orange plus imperf's and provisionals. All mint from early wet printings to later dry printings with excellent representation of shades, includes an unusually large assortment of #111's (48), #116's (33), #120's wet printings (20), #122b (9), etc. Minor flaws or gum problems in places, mainly sound including some NH, centering varies from fine to VF+ large margined examples. A great lot for studying shades, design types, finding plate varieties, etc. *(Not Illustrated)* **Est. 3,000.00+**





- 575 ☉ **The Collection of Used Singles** Offered intact with hundreds of stamps 1c to \$1 collected for shades, plus coils, imperforates, surcharges and war tax, also some precancels. Noted a rarely seen used 2c on 3c one-line surcharge, Die II (listed but unpriced used). Emphasis of value is in coil stamps. Duplication but includes many choice VF singles and choice postmarks, ideal for a student searching for plate varieties, printings, etc. Condition varies from mixed to mainly F-VF or better **Est. 2,000.00+**



- 576 ★ **Comprehensive Lot of Booklet Panes** Noted better 1c squat printings, a remarkable range of six different shades of which three panes are NH, 2c squat printings with six panes in four different shades, of which two are NH, #107c (2), 107f (2) also a few booklets including BK3a & BK5a in English, both are rare and contain squat printings. Plus numerous other panes with a wide range of shades in nice NH quality. A useful lot. **Est. 2,000.00+**



- 577 ★ **War Tax Collection of Mint Singles** Complete from MR1 to MR7 including all listed shades and dies, plus a few non-listed as well, we note MR2B-MR2D and an MR2C with "Sample" (cursive) handstamp. Mostly well centered, a few with disturbed OG from previous hinging, otherwise sound with selected VF to XF centering **Est. 1,000.00+**



- 578 ★ **War Tax Mint NH Assortment** Nice lot of over 90 singles, appears all mint NH. Many shades and highly select examples noted; the odd flaw, a very useful lot, F-VF **Est. 1,000.00+**





- 579 ★ **Balance of War Tax Mint Singles** A nice lot of nearly 150 singles, includes several superb mint examples with difficult shades and printings on coil stamps. Some flaws, mainly sound, F-VF LH or NH; worth a close look. **Est. 750.00+**



- 580 P **1930 (circa.) 3c Rotary Intaglio Process - Proposed Printing Contract with ABNC** Two blocks of six in blue and in red orange, both with unfinished design on right pair, also singles in dark blue, red orange, green and black, all printed by a rotary intaglio process on unwatermarked bond paper; stamp design slightly larger than the original with the King facing right instead of left as intended along with all inscriptions reversed, includes copy of correspondence between with ABNC, an interesting episode relating to the Admiral issue. **Est. 500.00+**



- 581 ★ **Balance of Smallman Collection** Assortment of many better items which did not quite make the cut as individual lots. Noted useful lathework items with #104 Type C NH block, #108 wet printing Type D inverted VF block of four and of six, #112 Type D inverted Fine NH block, #116 Type A Fine LH block, 122b Type D mint single, also #113 six different shades mint NH, 114iii block on thin paper, gum slightly glazed, #116 three NH singles, #122 three NH singles including a wet printing, #140b triple surcharge pair (stained), 140c pair with double surcharge, one inverted, MR2Di block of four, lower pair NH, etc. Worth close examination. **Est. 3,500.00+**



## COIL STAMPS



- 582 ★ **2c Deep Rose Red** Experimental Coil strip of four, well centered for this, slight clipped perfs at foot as often seen, nice impression of "Postage Stamp Division No. 1 MAY 11" Type A circular handstamp over paste-up, F-VF LH (Unitrade 106x) **400.00**



583



584



585

- 583 ★ **1c Blue Green, Perf 8 Horizontally** An unusually well centered coil strip of four with lovely rich colour, LH on second stamp, lower pair being extremely well centered with pristine original gum, never hinged, VF-XF (Unitrade 123-124) **1,500.00**
- 584 ★ **1c Blue Green, Perf 8 Horizontally** Post office fresh and well centered mint coil pair, deep rich colour and full unblemished original gum, VF NH (Unitrade 123) **900.00**
- 585 ★ **1c Green, Perf 8 Horizontally** A superbly centered mint paste-up coil strip of four; the two pairs in different shades, VLH on end stamps, centre paste-up pair is NH, XF and choice (Unitrade 123i + shade) **1,500.00**





-586-



-587-

- 586 ★ **1c Blue Green and 2c Rose Carmine, Perf 8 Horizontally** Unusually well centered paste-up coil pairs, bright fresh colours and full original gum; as nice as they come, VF+ NH (Unitrade 123i, 124i) **2,400.00**
- 587 ★ **1c Blue Green & 2c Rose Carmine, Perf 8 Horizontally** Superb mint coil strips of four with intact perforations, exceptional centering, fabulous colour on fresh paper and full original gum; rarely seen pair of coil strips in premium quality, XF NH GEM (Unitrade 123-124) **3,600.00+**



-588-



589

- 588 ★ **1c Blue Green & 2c Rose Carmine, Perf 8 Horizontally** Selected mint singles, well centered within large margins, brilliant colours and pristine original gum, VF NH (Unitrade 123-124) **1,800.00**
- 589 ★ **2c Carmine, Perf 8 Horizontally** An exceptionally well centered and mint single with intact perforations and full unblemished original gum, bright fresh colour; a superb stamp, XF NH GEM (Unitrade 124) **450.00+**



- 590 ★ 1c-3c Admiral Coils, Perf 8 Vertically** The set of six mint paste-up coil strips of four, all wet printings, with deep rich colours and full original gum; hard to find, F-VF NH (Unitrade 125i-130i) **2,150.00**



- 591 ★ 1c-3c Admiral Coils, Perf 8 Vertically** Select fresh, very fine to superb centered mint coil strips of four - 1c yellow green, 1c yellow Die I (wet printing), 2c dark carmine, 2c green (dry printing), 3c brown and F-VF centered 3c carmine, Die II (dry printing). All with brilliant fresh colours and full original gum, never hinged. (Unitrade 125iv, 126d, 127, 128ii, 129, 130b) **2,720.00**



- 592 ★ 2c Carmine & Rose Red, Perf 8 Vertically** Very well centered mint coil strips of four, striking shade differences; faint fingerprint on gum of one on former strip, otherwise both with amazing fresh colours, superb centering and full original gum, XF NH (Unitrade 127, 127ii) **1,200.00**





- 593 ★ **2c Carmine, Perf 8 Vertically** Paste-up coil mint strip of four, also brighter shade of carmine plus a very distinctive rose red shade (better than we are accustomed to seeing); all three strips are unusually well centered with three stamps NH. An attractive trio of these difficult paste-ups, VF-XF (Unitrade 127i, 127iii, 127i shade) **1,350.00**



-594-



595

- 594 ★ **3c Brown & 3c Dark Brown, Perf 8 Vertically** Superb mint coil strips of four in two distinctive shades, both exceptionally well centered with full pristine original gum; choice, XF NH (Unitrade 129, 129 shade) **1,000.00+**
- 595 ★ **3c Carmine, Die I (Wet Printing), Perf 8 Vertically** A choice mint example with intact perforations, rich colour and pristine original gum, XF NH (Unitrade 130) **250.00**



596



597



X598

- 596 ★ **1c Green, Perf 12 Horizontally** Experimental Toronto coil strip of four with large perforated holes between stamps, reasonably centered and fresh, F-VF NH (Unitrade 131iv) **640.00**
- 597 ★ **1c Green, Perf 12 Horizontally** Experimental Toronto paste-up coil strip of four with large perforated holes between stamps, very well centered for such a strip, brilliant fresh colour with full original gum; tough to find in such nice quality, VF NH (Unitrade 131v) **1,125.00**
- 598 ★ **1c-3c Admiral, Perf 12 Horizontally** A beautiful set of selected mint coil strips of four, all well centered with bright fresh colours and full original gum; 2c with corner bend on one stamp, VF+ NH (Unitrade 131-134) **2,150.00**



- 599 ★ **1c-3c Admiral Coils, Perf 12 Horizontally** Superb mint set of coil pairs, plus shades 1c blue green and 2c rose carmine, each very well to superbly centered with full pristine original gum, XF NH, choice (Unitrade 131-134, 131iii, 132iii) **1,585.00**





X600



X601



602

- 600 ★ **1c-3c Admiral Coils, Perf 12 Horizontally** Selected mint set of paste-up coil strips of four, unusually well centered with brilliant fresh colours and full original gum; tiny moisture spot on one 2c carmine, otherwise choice, VF NH and seldom seen as such. (Unitrade 131i-134i) **2,385.00**
- 601 ★ **1c-3c Admiral Coils, Perf 12 Horizontally** The set of four mint paste-up pairs, plus 1c blue green and 2c rose carmine shades, all are unusually well centered; 2c green has minor gum wrinkle, otherwise VF NH (Unitrade 131i-134i, 131iii, 132iv) **1,850.00**
- 602 ★ **2c Carmine, Perf 12 Horizontally** Post office fresh and well centered mint coil strip of four, appealing, VF+ NH (Unitrade 132) **600.00**



-603-



604



605

- 603 ★ **2c Carmine, Perf 12 Horizontally** Along with the rose carmine shade, both fresh, well centered and with full original gum, XF NH (Unitrade 132, 132i) **335.00**
- 604 ★ **2c Yellow Green (Wet Printing), Perf 12 Horizontally** An outstanding mint coil single, superbly centered with extra large margins, post office fresh with full immaculate original gum; XF NH GEM (Unitrade 133) **300.00+**
- 605 ★ **2c Yellow Green (Wet Printing), Perf 12 Horizontally** Superb mint coil single, precise centering with large margins, true colour and pristine original gum, XF NH (Unitrade 133) **300.00+**



- 606 ★ **2c+1c Carmine, Die I and 2c+1c Dark Brown, Die II War Tax, Perf 8 Vertically** Superb mint coil strips of four, the best centering one can possibly hope for on these difficult coil issues, both with exceptional centering and full original gum, lightly hinged, XF GEM (Unitrade MR6, MR7) **1,080.00+**



- 607 ★ **2c+1c Carmine, Die I War Tax, Perf 8 Vertically** Post office fresh and well centered mint coil strip of four, bright colour on fresh paper and full unblemished original gum, scarce this nice, VF+ NH (Unitrade MR6) **2,400.00**



- 608 ★ **2c+1c Carmine, Die I War Tax, Perf 8 Vertically** Mint single with bright fresh colour, well centered, intact perforations and full original gum, VF NH (Unitrade MR6) **600.00**



- 609 ★ **2c+1c Carmine, Die I War Tax, Perf 8 Vertically** An exceptional mint paste-up coil strip of four, the paste-up positioned at left pair, exceptionally well centered unlike many we have seen, with deep rich colour and full original gum, XF NH (Unitrade MR6i) **2,550.00**





- 610 ★ **2c+1c Carmine, Die I War Tax, Perf 8 Vertically** A remarkable paste-up strip of four, well centered, the two pairs display different and distinctive shades; visually striking, VF NH (Unitrade MR6i variety) **2,550.00**



- 611 ★ **2c+1c Rose Carmine, Die I War Tax, Perf 8 Vertically** A remarkable mint coil strip of four in premium quality, unusually well centered with fabulous colour on pristine paper, full pristine original gum; one would need a great amount of patience to find another strip of this elusive shade in similar quality, XF NH (Unitrade MR6ii) **2,700.00**



612



617



618

- 612 ★ **2c+1c Rose Carmine, Die I War Tax, Perf 8 Vertically** Nicely centered mint in a very distinctive shade, full original gum; a most appealing shade not often seen on this, VF NH (Unitrade MR6ii) **675.00**



- 613 ★ **2c+1c Brown, Die II War Tax, Perf 8 Vertically** Post office fresh and nicely centered mint coil strip of four, exceptional colour and full pristine original gum; a beautiful strip, VF NH (Unitrade MR7) **840.00**



- 614 ★ **2c+1c Dark Brown, Die II War Tax, Perf 8 Vertically** Extremely well centered mint coil strip of four, amazingly deep colour, faintest trace of hinging on second stamp only, others are NH; also the scarcer printing **2c+1c yellow brown shade, Die I** in a well centered strip of four, left stamp NH, others VLH. A choice duo, VF-XF (Unitrade MR7, MR7iii) **2,200.00**



- 615 ★ **2c+1c Brown, Die II War Tax, Perf 8 Vertically** Well centered paste-up coil strip of four with amazingly deep colour, scarce this nice, VF NH (Unitrade MR7i) **900.00**



- 616 ★ **2c+1c Yellow Brown, Die I War Tax, Perf 8 Vertically** Superb mint coil strip of four displaying exceptional centering - rarely seen on this especially, brilliant fresh colour and full original gum, XF NH (Unitrade MR7iii) **3,000.00+**

- 617 ★ **2c+1c Yellow Brown, Die I War Tax, Perf 8 Vertically** Nicely centered example of this elusive coil stamp, with intact perforations and full original gum, VF NH (Unitrade MR7iii)

*(Illustrated on Page 169)* **750.00**

- 618 ★ **2c+1c Yellow Brown, Die I War Tax, Perf 8 Vertically** Mint paste-up coil pair, left stamp in brown shade and right stamp in yellow brown, both are Die I, uncommonly seen, F-VF NH (Unitrade MR7iv shade; cat. for normal paste-up pair) **1,150.00**

*(Illustrated on Page 169)*



BALANCE OF COLLECTION - COIL STAMPS



619 ★ **Selection of Mint NH Coil Singles** Nice lot of over 50 singles, appears all mint NH. Many shades and selected examples; the odd flaw, mostly F-VF or better **Est. 500.00+**



620 ★ **Collection of Mint Coil Singles** Complete from #123 to #134 plus nearly all the listed shades, printings and dies found on the coil issues, also a few non-listed shades. Mostly well centered, a few with disturbed OG from hinging; all appear sound and selected for VF to XF centering **Est. 350.00+**

621 ★ **Balance of Mint Coil Stamps** Over 100 mint singles, majority hinged, includes shades, printings and numerous well centered examples. The odd flaw; generally F-VF *(Not Illustrated)* **Est. 500.00+**



622 ★ **Accumulation of Mint Coil Pairs** Includes (amount of pairs in parentheses) #123 (5), 124 (7), #125 (30), 126c, 127 (24), 129 (20), 130 (15), 130a, 131iv Experimental coil (5), 132 (13), 133 (4). Also paste-up pairs of #123 (6), 124 (4), 125 (7), 127 (10), 129 (4), 130 (9), 132 (6), 133 (4), etc. The odd flaw, but mainly clean throughout with many nice shades, F-VF **Est. 7,500.00+**



- 623 ★ Impressive Lot of War Tax Coil Pairs** Includes coil pairs of MR6 carmine (7), MR6ii rose carmine (7), MR7 brown to dark brown Die II (13), MR7iii yellow brown (mostly) to brown Die I (12); strips of three MR6 (3), MR7 (2); paste-up pairs of MR6 (4), MR6ii, MR7 (7) and MR7iii (4). Several stamps are NH, mainly F-VF or better with high catalogue value. **Est. 3,000.00+**



-X624-

-X625-

- 624 ★ Remarkable Lot of Coil Strips of Four** Includes better catalogue value pairs (amount in parentheses) with #123-124, 123i-124i, #125 (7), paste-ups (4), #127 (6), paste-ups (5), 129 (4), paste-ups (3), #130 (5) plus one paste-up, #131iv, #131v, 133, 133i (3) and much more. The odd flaw but mainly clean throughout, F-VF, numerous strips will yield NH stamps **Est. 3,000.00+**
- 625 ★ Admiral Coil Strips of Four** Collection of 19 different, complete from #123 to #134, plus shades #125ii, 126d, 127ii, 129ii unusual pale shade, #131ii, 131iv Experimental coil and #132iii. A few gum wrinkles or bends but all NH with mainly selected centering **Est. 1,500.00+**
- 626 ★ War Tax Mint Coil Strips of Four** Sixteen strips including MR6 (3), MR6i (2), MR7 (5), MR7i (2), MR7iii (2), MR7iv (2). A few minor flaws but will yield many NH stamps, mainly F-VF  
(Illustrated on Website) **Est. 1,500.00+**



## REVENUES

*See also Lot 114-116*

627



628



629

- 627 ☉ **FCD5, 1918 1c Orange Customs Duty** A very scarce used single, well centered, blue "CUSTOMS DUTY" two-line provisional handstamp of Niagara Falls, lightly cancelled. Among the finest that exist, XF; 1987 Greene Foundation cert. (issued to: J.J. Gaudio) **800.00+**
- 628 ☉ **FCD5a, 1918 1c Orange Customs Duty** Uncancelled used single with rich colour, two-line "CUSTOMS DUTY" provisional handstamp in violet applied at Niagara Falls, Fine and very seldom encountered **800.00**
- 629 ☉ **FWT7b, 1c Orange War Tax** Mint single with precancel "black squares" in black, a few dull perfs and paper hinge, a rare precancelled revenue stamp, large part OG, F-VF **650.00**



630



631

- 630 ☉ **FWT9a, 3c Green War Tax** Unusually fresh and well centered, precancelled "X" (upright) in red, rarely seen in such nice condition, VF **675.00**
- 631 ☉ **FWT9a, 3c Green War Tax** Fresh used with precancel "X" (upright position) in red, F-VF and scarce **675.00**



632



633



634

- 632 ☉ **FWT11b, 5c Olive Yellow War Tax** Choice used example precancelled "black squares" in black, VF **175.00**
- 633 ☉ **FWT11c, 5c Olive Yellow War Tax** Bright, fresh example showing double precancel "black squares" in black; very few exist, F-VF; 2012 Van Dam cert. **600.00**
- 634 ☉ **FWT11e, 5c Olive Yellow War Tax** A well centered example precancelled "flags" (inverted) in black, trivial flaws, nice appearing and very scarce **650.00**



635



636



637



638

- 635 ◎ **FWT12b, 8c Brown War Tax** Large margined example precancelled "black squares" in black, slight trace of a thin, otherwise VF, rare **650.00**
- 636 ◎ **FWT12d, 8c Brown War Tax** Fresh example precancelled "Railway Ties" (Type II) in black; light vertical crease, Fine appearing and rarely seen; 2012 Van Dam cert. **1,000.00**
- 637 ◎ **FWT12e, 8c Brown War Tax** A large margined mint example, precancelled "X" (inverted) in red, retaining full original gum, rare, F-VF LH **600.00**
- 638 ◎ **FWT12e, 8c Brown War Tax** Nicely centered and fresh used single, natural straight edge right, with rarely seen precancel "X" (inverted) in red, VF **450.00**



639



640



641

- 639 ◎ **FWT15a, 25c Carmine War Tax** Fresh example with precancel "Railway Ties" (Type II) in black; trivial flaws, a very scarce stamp, F-VF **650.00**
- 640 ◎ **FWT15b, 25c Carmine War Tax** Quite well centered, precancelled "EATON" handstamp in violet, customary punch cancel, F-VF and scarce **450.00**
- 641 ◎ **FX2d, 1/2c Carmine Excise Tax** Precancelled "flags" in black - left flag inverted, other two flags upright; some perf flaws and light soiling, F-VF and very rare; clear 2012 Van Dam cert. **750.00**



642



643

- 642 ◎ **FX3a, 6c Orange Excise Tax** Fresh with precancelled "EATON" typeset in black, couple shorter perfs, customary punch cancel, Fine and very scarce **500.00**
- 643 ◎ **FX6a, 15c Orange Excise Tax** Fresh single, precancelled "Railway Ties" (Type I) in black, Fine and rare **850.00**



BALANCE OF COLLECTION - REVENUES



- 644 ★◎ **KGW War & Excise Tax Collection** Binder with hundreds of stamps mint and used, plus dozens of multiples often mint; emphasis on KGW War and Excise Tax including a myriad of surcharge varieties and "freaks", basic issues including scarcer mint blocks, some on document, others such as Passport stamps, Postal Note & Scrip, Two-Leaf and Three-Leaf Excise Tax mint / used plus multiples, etc. A remarkable lot; overall clean and select condition; an excellent nucleus for further expansion and specialization. **Est. 3,500.00+**



- 645 ★◎ **Extraordinary Collection of Lathework on Revenues** Organized on stockpages with War Tax & Excise Tax in addition to surcharges and Two-Leaf Excise Tax stamps, an impressive display of 76 singles, pairs or blocks (of four or larger) with lathework. Lightly duplicated but often showing different strengths, also surcharge varieties, a few precancels, etc. Condition variable on some, inevitable considering the scarcity of the material. Little is missing from the possible list of revenues that exist with lathework; a fertile ground for specialization, F-VF **Est. 2,000.00+**



- 646 ★◎ **War Tax & Excise Tax Precancels** Displayed on stockpages including some rarities such as Van Dam FWT8b, 11e (2014 Greene cert.), 12a, 13a, FX6a; plus several cataloguing between \$50 and \$150; various War Tax 1c-5c precancelled "X" singles and / or in blocks, etc. Includes two items with fake "X" (not counted). Condition on higher cat. items tends to be mixed as usual, the rest Fine to Very Fine; a useful lot for the specialist. **Est. 750.00+**

END OF AUCTION  
THANK YOU



## NOTES

[illegible]



# THE PLACING OF A BID SHALL CONSTITUTE ACCEPTANCE OF THE CONDITIONS OF SALE

## BIDDING

1. The auction is conducted in Canadian dollars. All bids are per lot, as numbered in the catalogue. Eastern Auctions Ltd. reserves the right to withdraw any lot prior to sale, to divide a lot or to group two or more.
2. The highest bidder shall prevail at one advance over the next highest bid. Should a dispute arise between bidders, the decision of the auctioneer as to the successful bidder or the re-offering or resale of the lot in dispute shall rest entirely in the judgment of the auctioneer. **On all lots sold a commission of 15% on the hammer price will be payable by the buyer.** The auctioneer shall regulate the bidding and reserves the right to refuse any bid believed by him not to be made in good faith.

## PAYMENT FOR PURCHASES

3. U.S. funds are acceptable only at the equivalent amount shown on the invoice. Visa, MasterCard and Paypal are accepted at a charge equal to 3.5% of the hammer amount. Please include the information on your bid sheet. We also accept cheques at no extra cost.
4. Payment for lots, including those on which opinions are desired under Condition of Sale 8, shall be made as follows:

A successful mail bidder will be notified of lots purchased and must remit before the lots are sent. A person known to us, or who furnishes satisfactory references, may at our option have purchases forwarded for immediate payment. Delivery will be to the address on the bid sheet. Proof by receipt of sending at the advised address shall constitute delivery. Postage and insurance are payable by the buyer.
5. Title shall not pass to the buyer until Eastern Auctions Ltd has received full payment.
6. Buyers agree to pay for lots as specified above and no credit is extended, a late payment charge of 2% per month is added to overdue payments, minimum \$5.00.

## QUALITY AND AUTHENTICITY

7. Each lot is sold as genuine and correctly described based on individual description as modified by any specific notations in this catalogue including (but not restricted to) “Key to Cataloguing”.
  - (a) **QUALITY.** Any lot, description of which is incorrect, is returnable within forty-five days from closing date of auction. If the opinion of a mutually acceptable authority is desired, this period will be extended as noted in Condition 8. All disputed lots must be returned intact in the condition received. Photographed lots are not returnable on account of centering or perforations. Lots containing more than twenty stamps, described “as is”, or described as having faults are not returnable for any reason. Bidders who have had an opportunity to examine the lots prior to the sale may not return the lots.
  - (b) **AUTHENTICITY.** Any lot, which is declared other than genuine by a mutually acceptable authority is returnable, provided the lot is received within a period of four weeks from the date of the auction. Proof that a “mutually acceptable authority” declines to express an opinion is not normally grounds for the return of a lot.
  - (c) Returns must be made by registered mail.
  - (d) Lots marked or encapsulated by an expert committee are not returnable for any reason.
  - (e) Lots accompanied by an existing certificate are not returnable.

## EXTENSION OF TIME

8. When an opinion from an acceptable authority is necessary the buyer must request an extension from Eastern Auctions Ltd. prior to the auction. The buyer must pay for the lot in full (a refund will be issued in the event of an unfavourable opinion). Eastern Auctions Ltd. will then submit the lot on the buyer’s behalf to one of the following:
  - Vincent Greene Foundation (Canada and BNA)
  - Philatelic Foundation (USA)
  - BPA or RPSL (British Commonwealth)
  - Sergio Sismondo (World except USA)

## EXPENSES OF CERTIFICATION

9. Expenses shall be borne by the buyer except where the lot is other than as described and is returned within the conditions set forth above. Our responsibility is expressly limited to:
- (a) The actual cost of the opinion if up to \$30.00 or less, or
  - (b) The cost of the opinion up to 5% of the sale price but not exceeding a maximum of \$100.00.
  - (c) We are not responsible for expenses on the return of any lot.

## SALES TAXES

10. Canadian residents will be charged GST or HST as appropriate for their mailing address. Foreign residents are liable for GST only on the buyer's premium.

This firm is a subscriber to the ASDA Code of Ethics for Auction firms.

## KEY TO CATALOGUING

### SYMBOLS & MAJOR ABBREVIATIONS

★	Mint	⊙	Used	E	Essay
☒	Cover	(/)	Incomplete Set	F	Forgery
(-)	Complete Set	R	Reprint	P	Proof
◆	Graded Stamp	CDS	Circular Date Stamp	L	Literature

## CONDITION

The various grading of stamps are in order; **Extremely Fine; Very Fine; Fine and Very Good.** In the case of sets, large blocks, sheets, etc., the condition quoted represents the average and quality above and below this standard can be expected. Minor perf separation can be expected on larger multiples.

**Mixed condition:** in large lots, a range of condition can be expected, from small faults to Very Fine.

## GUM

<b>NH</b>	Never Hinged – with full original gum in Post Office state and unmounted.
<b>LH</b>	Lightly Hinged – with full original gum showing some evidence of a previous hinge.
<b>OG</b>	Original gum – showing some evidence of a previous hinge, a portion of which may still be present.
<b>Part OG</b>	Part original gum.
<b>Unused</b>	Unused without original gum, or regummed.
<b>Ungummed</b>	Without gum as issued.

## A NOTE ON HINGING

Bidders are reminded that, in accordance with industry standards, hinging is not described with respect to used stamps or stamps and proofs that were printed without gum. Hinging on these items is irrelevant to their condition and value. If hinging is important to you in such cases please contact us before bidding and request further information. **We will not accept the return of used stamps or ungummed items due to hinging.**

Hinging on mint stamps is always disclosed, however, never hinged status should not be expected unless specifically stated “never hinged” or “NH”.

## ESTIMATED VALUES

If an estimated cash value is given, it is shown in the description and always indicated by the abbreviation “Est.”. It is used where the lot is large or where the actual value has little relation to the catalogue price. **It represents the auctioneer's appraisal of the true CASH value of a lot and the figure is invariably close to the actual realization.** It is useless for mail bidders to list any bids that are only a low proportion of such estimates.



# CATALOGUES AND HANDBOOKS USED IN LISTING

- Unitrade Specialized (2018 Edition)
- George Marler, The Admiral Issue of Canada, APS, 1982
- Allan L. Steinhart, The Admial Era: A Rate Study 1912-1928, Jim Hennok Ltd., 1981
- Stanley Gibbons Commonwealth & British Empire Stamps 1840-1970 (2018 Edition)
- Robson Lowe, The Encyclopaedia of British Empire Postage Stamps Vol. V North America, 1973
- Minuse and Pratt, The Essays and Proofs of British North America, 1970
- Fred Jarrett, Stamps of British North America, Quarterman Publications, 1975
- Winthrop Boggs, The Postage Stamps and Postal History of Canada, 1974
- D.M. Lacelle, Fancy Cancells on Canadian Stamps 1855 to 1950, Second Edition, 2007

## BIDDING INCREMENTS

The auctioneer may regulate the bidding at his discretion. However, to assist absentee bidders in establishing their maximum bid for each lot, the increments shown below will be used in most cases. We recommend that written bids conform to these increments (those which do not will be reduced to the previous level).

### BIDDING IS CONDUCTED IN THE FOLLOWING INCREMENTS:

<i>\$10 - \$50.....</i>	<i><b>\$2.00</b></i>	<i>\$800 - \$1,500.....</i>	<i><b>\$50.00</b></i>	<i>\$16,000 - \$30,000.....</i>	<i><b>\$1,000.00</b></i>
<i>\$55 - \$130.....</i>	<i><b>\$5.00</b></i>	<i>\$1,600 - \$3,000.....</i>	<i><b>\$100.00</b></i>	<i>\$32,500 - \$75,000....</i>	<i><b>\$2,500.00</b></i>
<i>\$140 - \$300.....</i>	<i><b>\$10.00</b></i>	<i>\$3,250 - \$7,500.....</i>	<i><b>\$250.00</b></i>	<i>\$80,000 - OVER.....</i>	<i><b>\$5,000.00</b></i>
<i>\$325 - \$750.....</i>	<i><b>\$25.00</b></i>	<i>\$8,000 - \$15,000.....</i>	<i><b>\$500.00</b></i>		

## TELEPHONE BIDS

Bids may be placed during office hours Monday to Friday from 8:00 AM to 5:00 PM Atlantic Standard Time by dialing 1 (506) 548-8986 or toll free in North America 1 (800) 667-8267. Bids may also be placed during the viewing sessions only, by calling the hotel directly at 1 (902) 423-6331 and asking for “Eastern Auctions”.  
*Please note all telephone bids must be confirmed by mail, e-mail or fax.*

## FAXING OR E-MAILING YOUR BIDS

You can fax your bids 1 (506) 546-6627, or toll free in North America 1 (888) 867-8267.  
E-mail address: *easternauctions@nb.aibn.com*

## BIDDING BY MAIL

If you wish to mail your bid sheet please allow at least two weeks for delivery. We often receive mail bids after the auction closing. These bids are unfortunately nullified. Bidders are urged to phone in their bids and then mail in their confirmation.

## WEB SITE

You can view this auction on our Web Site at *www.easternauctions.com*. For your convenience, we have pictured almost every lot to facilitate your bidding. This will nicely compliment the catalogue due to constraints presented by a printed format.

## AUCTION AGENTS

*We are pleased to recommend the following agents:*

**Mr. Claude Michaud**

P.O Box 31248 • Halifax • Nova Scotia • B3K 5Y1 • Canada  
Tel: 1 (902) 443-5912 • Fax: 1 (902) 445-5795  
Cell: 1 (902) 456-0950  
E-mail: [jcm.ph@ns.sympatico.ca](mailto:jcm.ph@ns.sympatico.ca)

**Mr. Nick Martin**

Angel House • Station Road • Sutterton • Boston  
Lincolnshire • PE20 2JH • UK  
Tel: (44) 012 0546 0968  
E-mail: [nick@loveauctions.co.uk](mailto:nick@loveauctions.co.uk)  
Web Site: [www.loveauctions.co.uk](http://www.loveauctions.co.uk)

**Mr. Charles Cwiakala**

1527 S. Fairview Avenue • Park Ridge • IL • 60068 • USA  
Phone or Fax: 1 (847) 823-8747  
E-mail: [cecwiakala@aol.com](mailto:cecwiakala@aol.com)

**Mr. Frank Mandel**

P.O. Box 157 • New York • NY • 10014-0157 • USA  
Tel: 1 (212) 675-0819 - Fax: 1 (212) 366-6462

**Amanda Lewis &  
Jerry Tucker**

21 Leo Ave • Sussex • New Brunswick • E4E 1Z9 • Canada  
Tel: 1 (506) 433-2232  
E-mail: [arl1964@yahoo.ca](mailto:arl1964@yahoo.ca)

**Mr. Michael Read**  
Lancaster Auction Agent

Poachers Retreat • Common Lane • Kings Langley • WD4 9HP  
Tel: +44(0)1923 269775 • Mobile: +44(0)7789 441735  
E-mail bids: [michael.read2@hotmail.co.uk](mailto:michael.read2@hotmail.co.uk)  
Web Site: [www.lancasterauctionagency.com](http://www.lancasterauctionagency.com)

**Purser Associates**

84 Webcower Road #2 • Arlington • MA • 02474-2323 • USA  
Tel: 1 (857) 928-5140 • Fax: 1 (781) 777-1023  
E-mail: [info@pursers.com](mailto:info@pursers.com) Web Site: [www.pursers.com](http://www.pursers.com)  
Visa, MasterCard & American Express welcomed.

**Mr. Trevor Chinery**

22 The Pastures • Cottesmore • Rutland • LE15 7DZ • UK  
Tel: (44) 012 0533 0026 • Fax: (44) 015 7281 3226  
E-mail: [trevortrilogy@aol.com](mailto:trevortrilogy@aol.com)  
Web Site: [www.philatellic-auction-agent.co.uk](http://www.philatellic-auction-agent.co.uk)

